

Light efficiency:



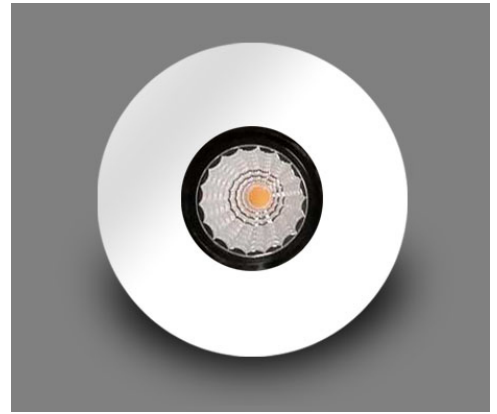
Output: 600 lm

Light quality:

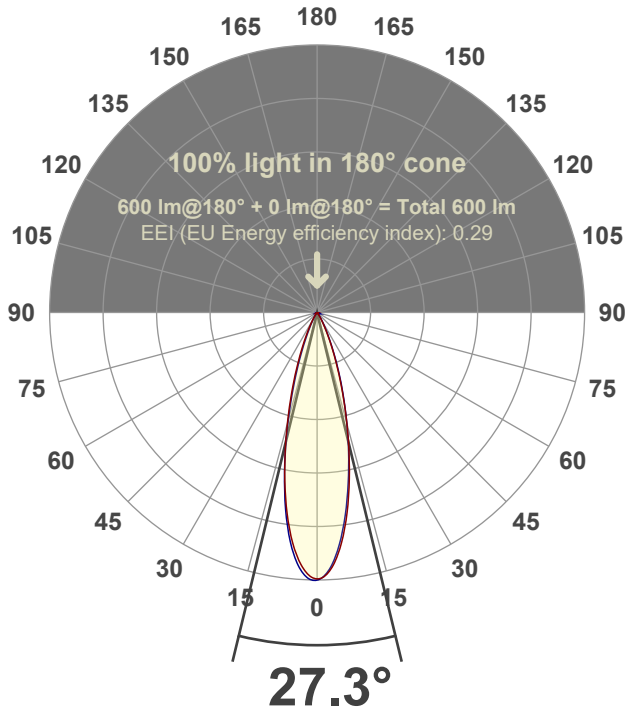


Peak: 2227 cd

Power: 14.6 W



Beam angle



Test number:

GR-F-F-A14-3019-NF-RD-91A-Rev2

Luminaire Model:

Graffiti Flat Round Fixed Downlight-A14-3019 24° Optic-Solite

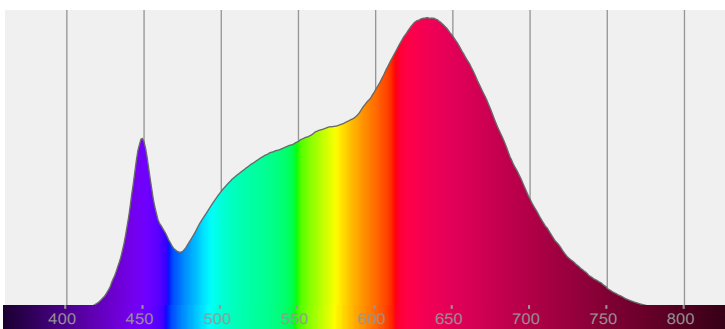
Date and time:

3/24/2022 9:39:38 PM

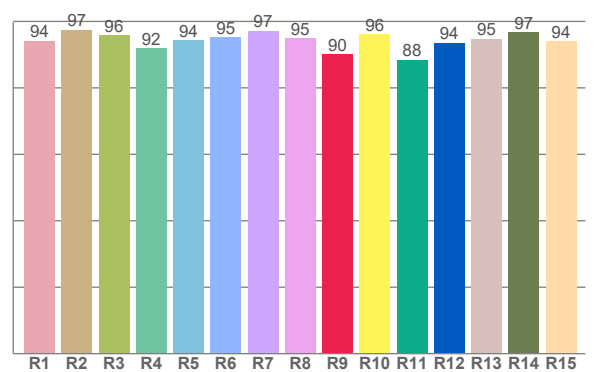
Delivered Lumens

600

Spectra



CRI: 95.1 (R1-R8)



Color parameters

	Color rendering index	Red component	Color fidelity	Color gamut	Color quality scale	Color coordinate cie 1931	Color coordinate cie 1931	Color coordinate	Color coordinate	Color deviation from black body
	CRI	CRI R9	TM30 R _f	TM30 R _g	CQS	x	y	u	v	Δuv
	95.1	90.1	94.9	105.3	95.0	0.424	0.389	0.249	0.342	-0.0043

R_f 94.9

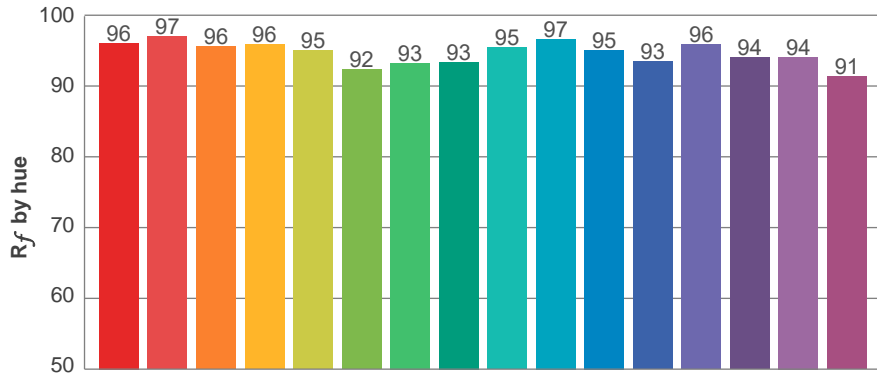
Fidelity index R_f

R_g 105.3

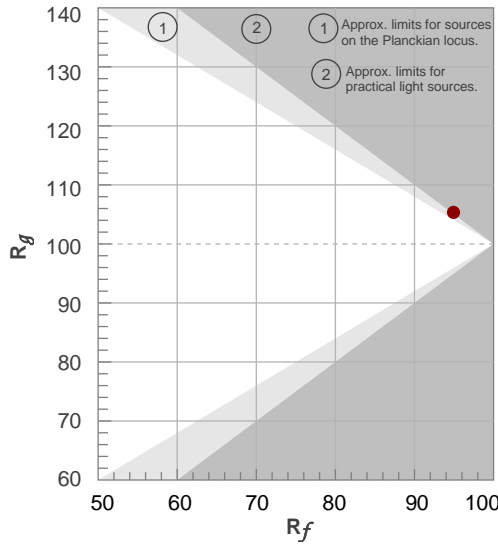
Gammut index R_g

TM30: 94.9

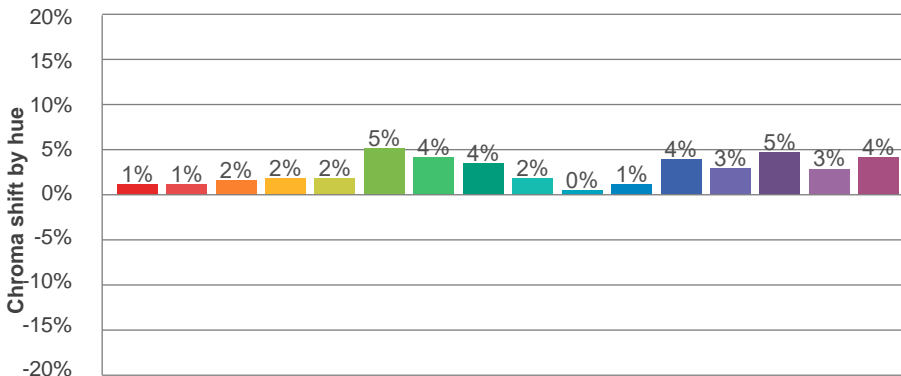
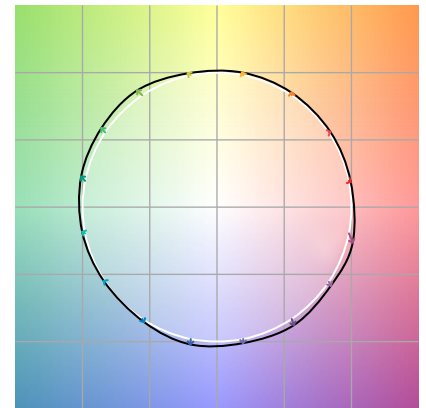
TM-30Color



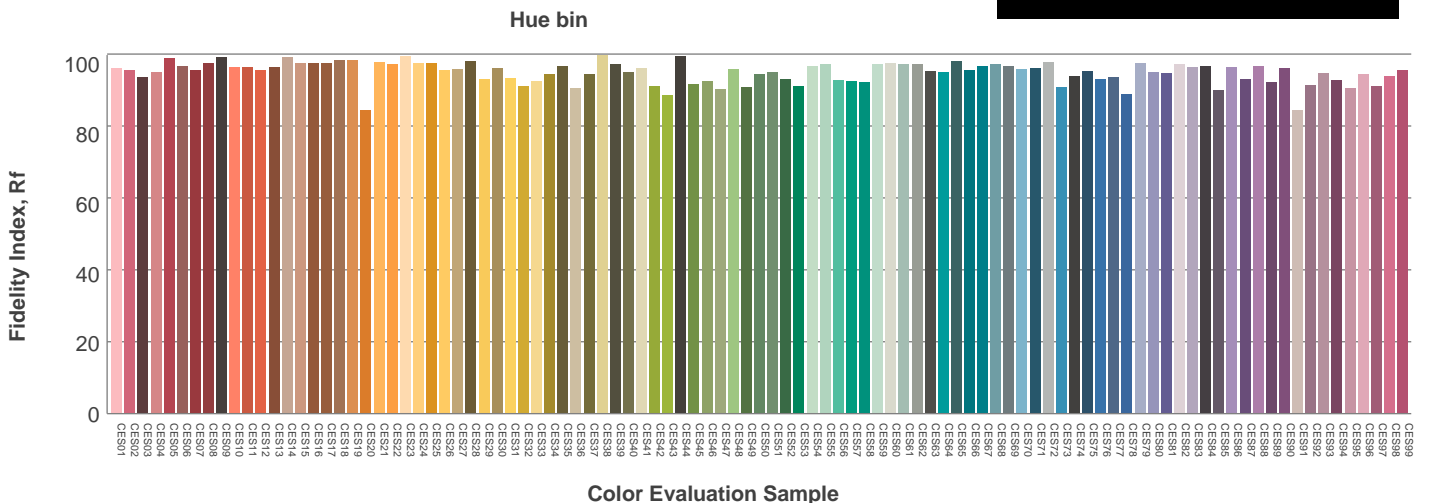
Hue Bin	R_f	Graphic shifts (%)	
		Chroma	Hue
1	96	1%	-1%
2	97	1%	0%
3	96	2%	1%
4	96	2%	1%
5	95	2%	2%
6	92	5%	1%
7	93	4%	-1%
8	93	4%	-3%
9	95	2%	-2%
10	97	0%	-1%
11	95	1%	2%
12	93	4%	0%
13	96	3%	-1%
14	94	5%	-1%
15	94	3%	-1%
16	91	4%	-6%



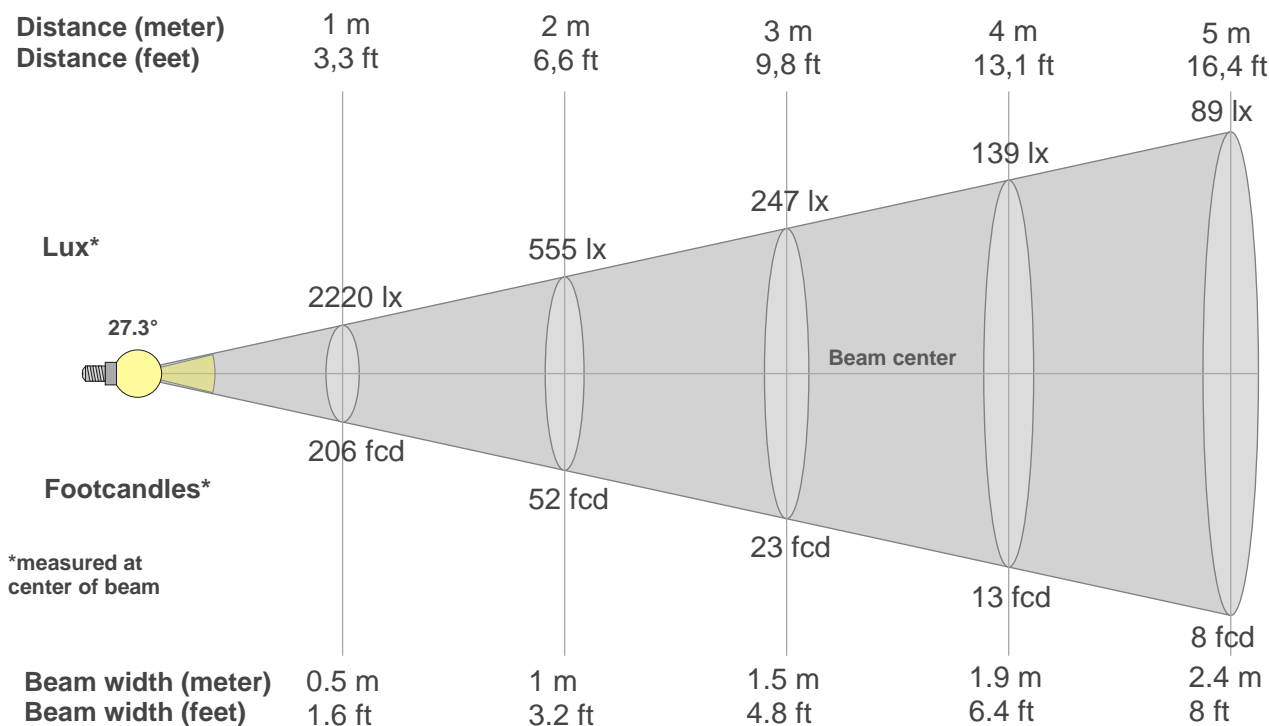
Color vector graphics



Color distortion



Beam details



Beam intensities from 1-20m

1m	2m	3m	4m	5m	6m	7m	8m	9m	10m	11m	12m	13m	14m	15m	16m	17m	18m	19m	20m
3.3ft	6.6ft	9.8ft	13.1ft	16.4ft	19.7ft	23ft	26.2ft	29.5ft	32.8ft	36.1ft	39.4ft	42.7ft	45.9ft	49.2ft	52.5ft	55.8ft	59.1ft	62.3ft	65.6ft
2220lx	555lx	247lx	139lx	89lx	62lx	45lx	35lx	27lx	22lx	18lx	15lx	13lx	11lx	10lx	9lx	8lx	7lx	6lx	6lx
206.2fcd	51.6fcd	22.9fcd	12.9fcd	8.2fcd	5.7fcd	4.2fcd	3.2fcd	2.5fcd	2.1fcd	1.7fcd	1.4fcd	1.2fcd	1.1fcd	0.9fcd	0.8fcd	0.7fcd	0.6fcd	0.6fcd	0.5fcd

Intensities in 0° c-plane

0°	2°	4°	6°	8°	10°	12°	14°	16°	18°	20°	22°	24°	26°	28°	30°	32°	34°	36°	38°
2220	2183	2090	1939	1744	1527	1301	1077	866	678	518	387	281	197	134	95	67	48	34	25
100%	98%	94%	87%	79%	69%	59%	49%	39%	31%	23%	17%	13%	9%	6%	4%	3%	2%	2%	1%

Intensities in 90° c-plane

0°	2°	4°	6°	8°	10°	12°	14°	16°	18°	20°	22°	24°	26°	28°	30°	32°	34°	36°	38°
2220	2172	2059	1897	1701	1486	1274	1067	871	692	535	402	293	208	145	102	74	55	40	30
100%	98%	93%	85%	77%	67%	57%	48%	39%	31%	24%	18%	13%	9%	7%	5%	3%	2%	2%	1%

Intensities in 180° c-plane

0°	2°	4°	6°	8°	10°	12°	14°	16°	18°	20°	22°	24°	26°	28°	30°	32°	34°	36°	38°
2220	2179	2085	1940	1747	1531	1304	1077	862	675	516	385	280	199	138	99	71	51	36	26
100%	98%	94%	87%	79%	69%	59%	49%	39%	30%	23%	17%	13%	9%	6%	4%	3%	2%	2%	1%

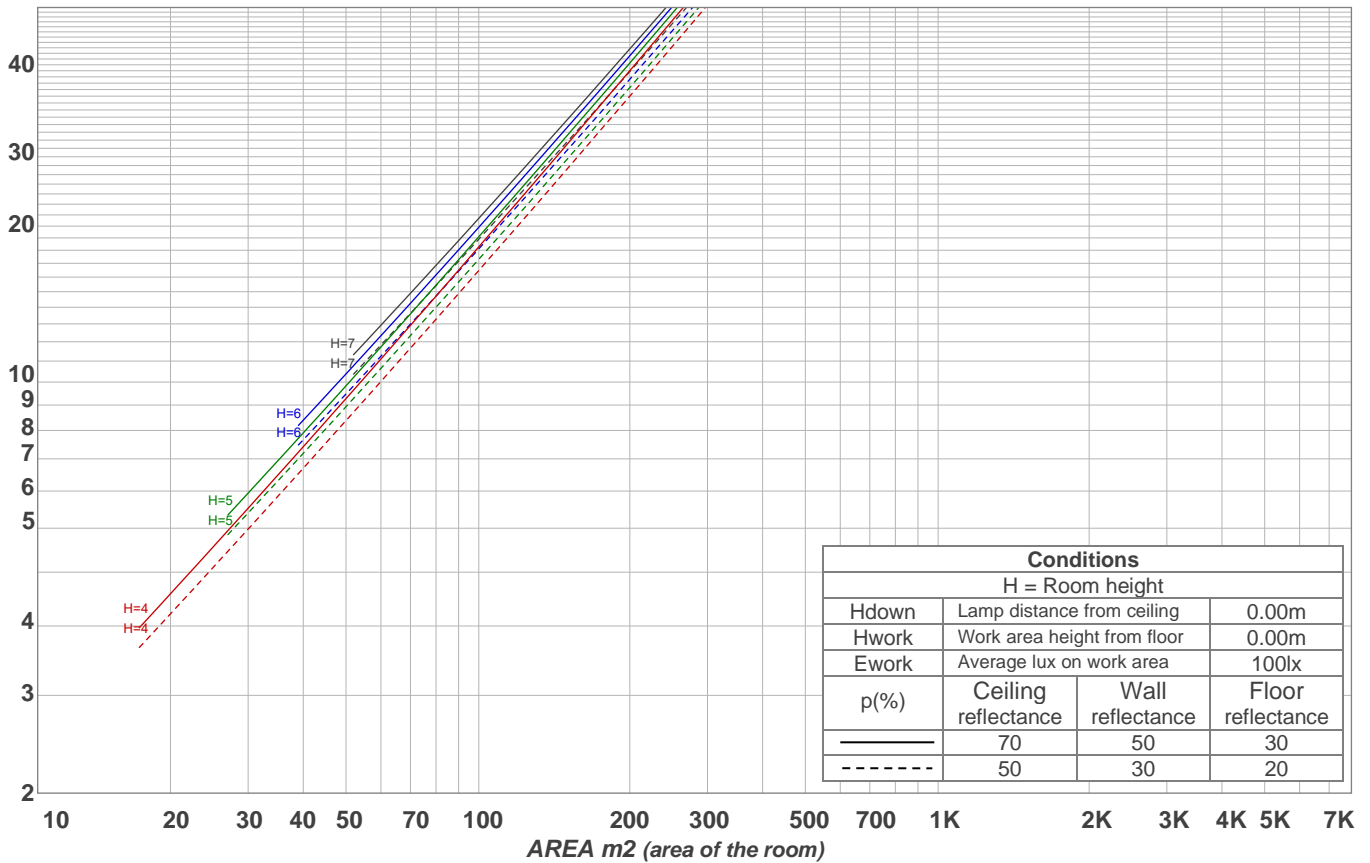
Intensities in 270° c-plane

0°	2°	4°	6°	8°	10°	12°	14°	16°	18°	20°	22°	24°	26°	28°	30°	32°	34°	36°	38°
2220	2217	2131	1982	1786	1556	1307	1057	828	632	466	331	226	154	107	76	54	39	28	21
100%	100%	96%	89%	80%	70%	59%	48%	37%	28%	21%	15%	10%	7%	5%	3%	2%	2%	1%	1%

Beam angle 50%	Field angle 10%	Cutoff angle 2,5%	Intensity ratio in 120° cone	Intensity ratio in 90° cone
27.3°	50.2°	66.1°	98.1%	96.8%

LAMPS (number of lamps)
50

Light planning Luminaire budgetary diagram



Luminaire budgetary diagram AREA m2 (area of the room) Coefficients of Utilization

Ceiling reflectance	80				70				50			30			10			0				
Wall reflectance	70	50	30	10	70	50	30	10	50	30	10	50	30	10	50	30	10	50	30	10	0	
Floor reflectance	20	20	20	20	20	20	20	20	20	20	20	20	20	20	20	20	20	20	20	20	20	0
RCR	(RCR: Room Cavity Ratio)																					
	Room Values are expressed as percentage of Lumens delivered to the task surface																					
0	119	119	119	119	116	116	116	116	111	111	111	106	106	106	102	102	102	100	100	100	100	
1	114	112	110	108	112	110	108	106	106	104	103	102	101	100	99	98	97	95	95	94	93	
2	110	106	103	100	108	104	101	99	101	99	97	98	96	95	96	94	93	91	91	90	89	
3	106	101	97	94	104	100	96	93	97	94	92	95	92	90	93	91	89	88	88	87	86	
4	103	97	92	89	101	96	92	88	94	90	87	92	89	86	90	87	85	84	84	83	82	
5	99	93	88	85	98	92	88	84	90	86	84	89	85	83	87	84	82	81	81	80	79	
6	96	89	84	81	95	88	84	81	87	83	80	86	82	80	85	82	79	78	78	77	76	
7	93	86	81	78	92	85	81	78	84	80	77	83	80	77	82	79	77	76	76	75	74	
8	90	83	78	75	89	82	78	75	81	78	75	80	77	75	80	77	74	73	73	72	71	
9	87	80	76	73	86	80	75	73	79	75	72	78	75	72	77	74	72	71	71	70	69	
10	85	78	73	70	84	77	73	70	77	73	70	76	72	70	75	72	70	69	69	68	67	

Zonal Lumen Summary

0°-10°	10°-20°	20°-30°	30°-40°	40°-50°	50°-60°	60°-70°	70°-80°	80°-90°
177 lm	262 lm	110 lm	27.6 lm	8.02 lm	4.93 lm	4.50 lm	3.87 lm	2.70 lm
90°-100°	100°-110°	110°-120°	120°-130°	130°-140°	140°-150°	150°-160°	160°-170°	170°-180°
0.000 lm	0.000 lm	0.000 lm	0.000 lm	0.000 lm	0.000 lm	0.000 lm	0.000 lm	0.000 lm