

Light efficiency:



Output: 558 lm

Light quality:

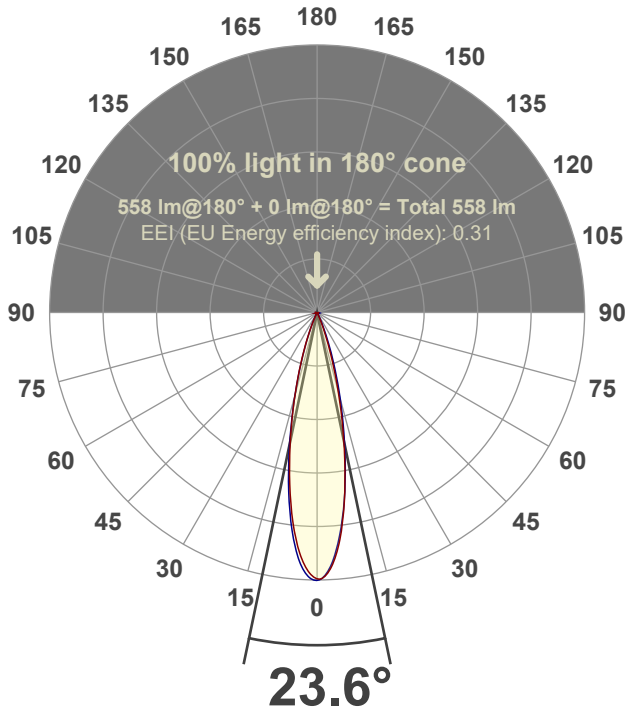


Peak: 2930 cd

Power: 14.6 W



Beam angle



Test number:

GR-F-F-A14-3019-NF-SQ-91A-Rev2

Luminaire Model:

Graffiti Flat Square Fixed Downlight-A14-3019 24° Optic-Solite

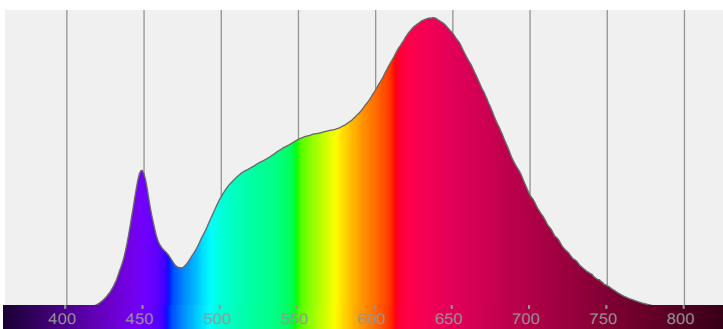
Date and time:

6/30/2022 12:28:29 PM

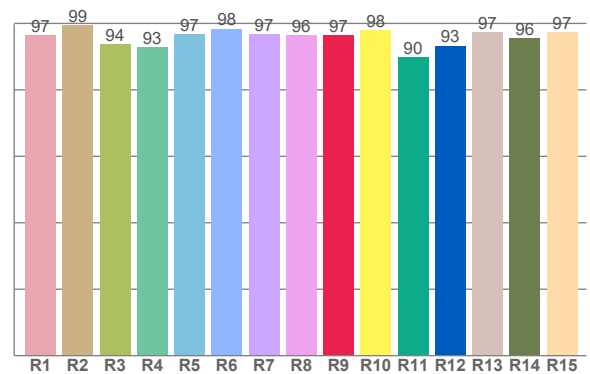
Delivered Lumens

558

Spectra



CRI: 96.3 (R1-R8)



Color parameters

	Color rendering index	Red component	Color fidelity	Color gamut	Color quality scale	Color coordinate cie 1931	Color coordinate cie 1931	Color coordinate	Color coordinate	Color deviation from black body
	CRI	CRI R9	TM30 R <sub>f</sub>	TM30 R <sub>g</sub>	CQS	x	y	u	v	Δuv
	96.3	96.5	95.4	104.1	94.9	0.436	0.403	0.251	0.347	-0.0004

**$R_f$  95.4**

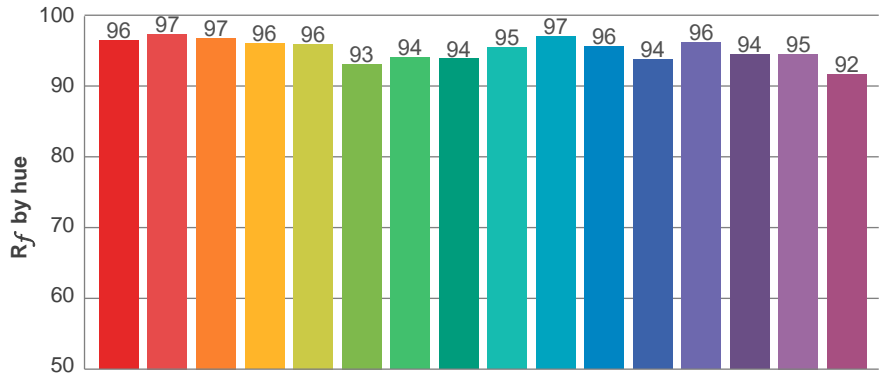
Fidelity index  $R_f$

---

**$R_g$  104.1**

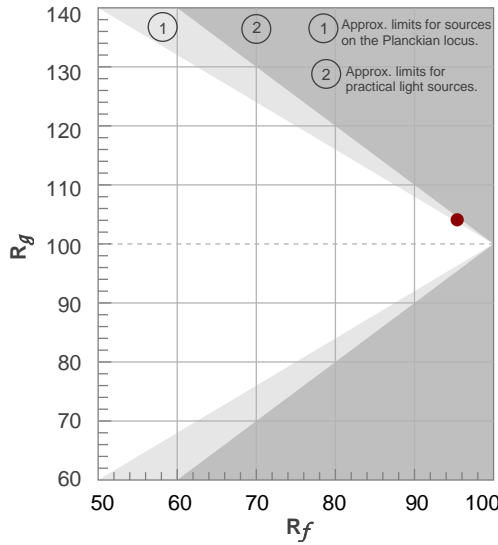
Gammut index  $R_g$

TM30: 95.4

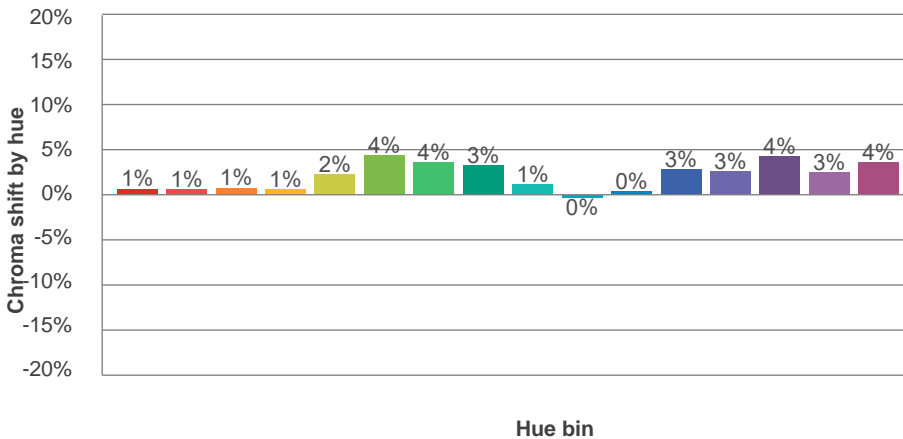
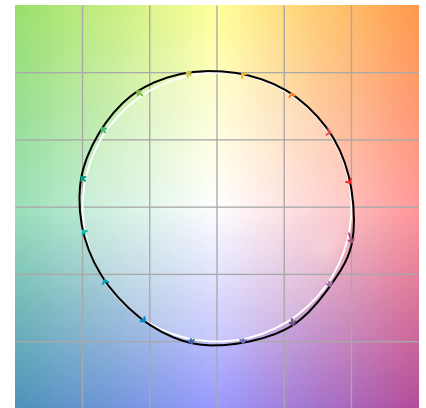


TM-30Color

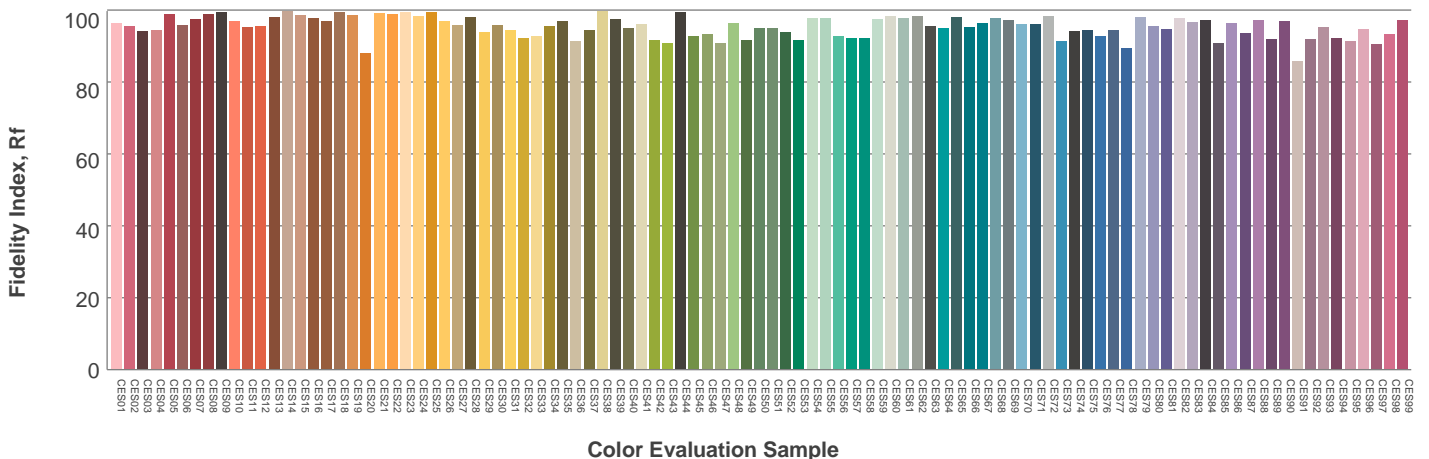
Hue Bin	$R_f$	Graphic shifts (%)	
		Chroma	Hue
1	96	1%	-1%
2	97	1%	-1%
3	97	1%	1%
4	96	1%	1%
5	96	2%	3%
6	93	4%	2%
7	94	4%	-1%
8	94	3%	-2%
9	95	1%	-2%
10	97	0%	-1%
11	96	0%	2%
12	94	3%	1%
13	96	3%	-1%
14	94	4%	-1%
15	95	3%	-2%
16	92	4%	-6%



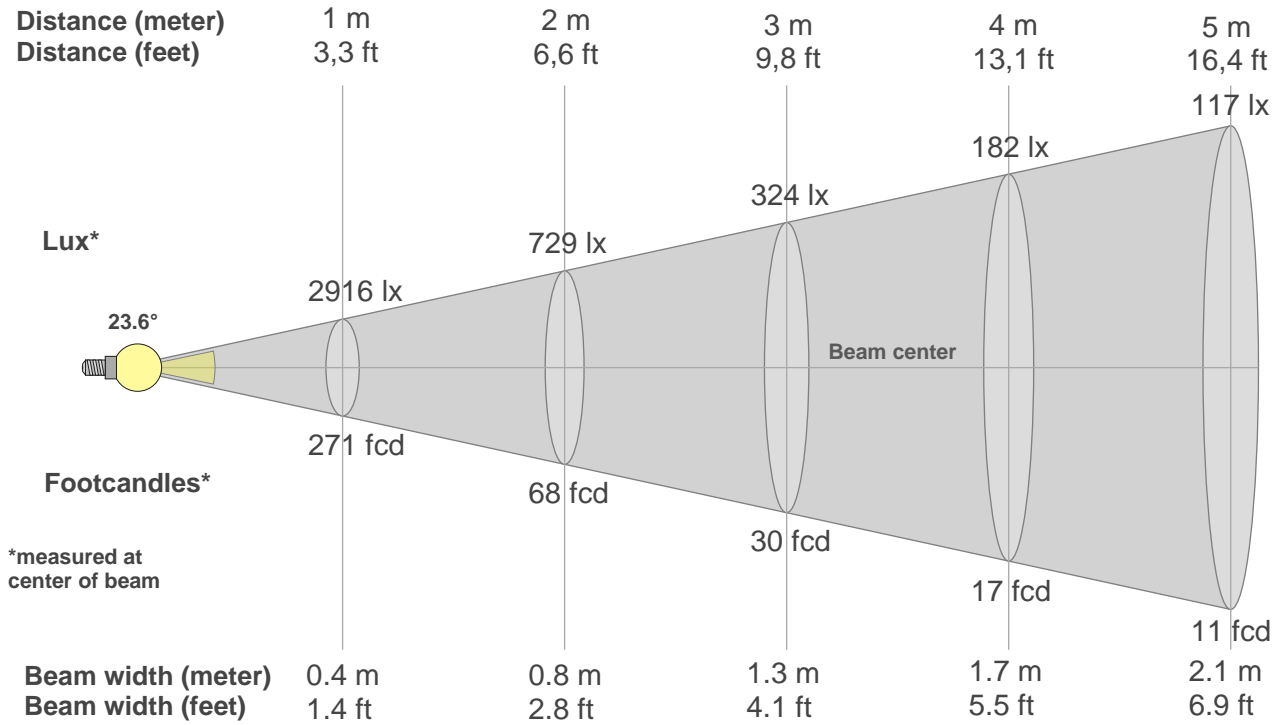
Color vector graphics



Color distortion



**Beam details**



**Beam intensities from 1-20m**

1m	2m	3m	4m	5m	6m	7m	8m	9m	10m	11m	12m	13m	14m	15m	16m	17m	18m	19m	20m
3.3ft	6.6ft	9.8ft	13.1ft	16.4ft	19.7ft	23ft	26.2ft	29.5ft	32.8ft	36.1ft	39.4ft	42.7ft	45.9ft	49.2ft	52.5ft	55.8ft	59.1ft	62.3ft	65.6ft
2916lx	729lx	324lx	182lx	117lx	81lx	60lx	46lx	36lx	29lx	24lx	20lx	17lx	15lx	13lx	11lx	10lx	9lx	8lx	7lx
270.9fcd	67.7fcd	30.1fcd	16.9fcd	10.8fcd	7.5fcd	5.5fcd	4.2fcd	3.3fcd	2.7fcd	2.2fcd	1.9fcd	1.6fcd	1.4fcd	1.2fcd	1.1fcd	0.9fcd	0.8fcd	0.8fcd	0.7fcd

**Intensities in 0° c-plane**

0°	2°	4°	6°	8°	10°	12°	14°	16°	18°	20°	22°	24°	26°	28°	30°	32°	34°	36°	38°
2916	2864	2712	2466	2136	1769	1409	1071	765	508	317	186	103	56	30	20	15	12	11	8
100%	98%	93%	85%	73%	61%	48%	37%	26%	17%	11%	6%	4%	2%	1%	1%	1%	0%	0%	0%

**Intensities in 90° c-plane**

0°	2°	4°	6°	8°	10°	12°	14°	16°	18°	20°	22°	24°	26°	28°	30°	32°	34°	36°	38°
2916	2854	2682	2428	2123	1788	1455	1141	858	610	414	262	157	90	50	30	19	13	10	8
100%	98%	92%	83%	73%	61%	50%	39%	29%	21%	14%	9%	5%	3%	2%	1%	1%	0%	0%	0%

**Intensities in 180° c-plane**

0°	2°	4°	6°	8°	10°	12°	14°	16°	18°	20°	22°	24°	26°	28°	30°	32°	34°	36°	38°
2916	2835	2664	2400	2088	1752	1415	1095	815	578	384	233	125	67	37	23	16	13	10	10
100%	97%	91%	82%	72%	60%	49%	38%	28%	20%	13%	8%	4%	2%	1%	1%	1%	0%	0%	0%

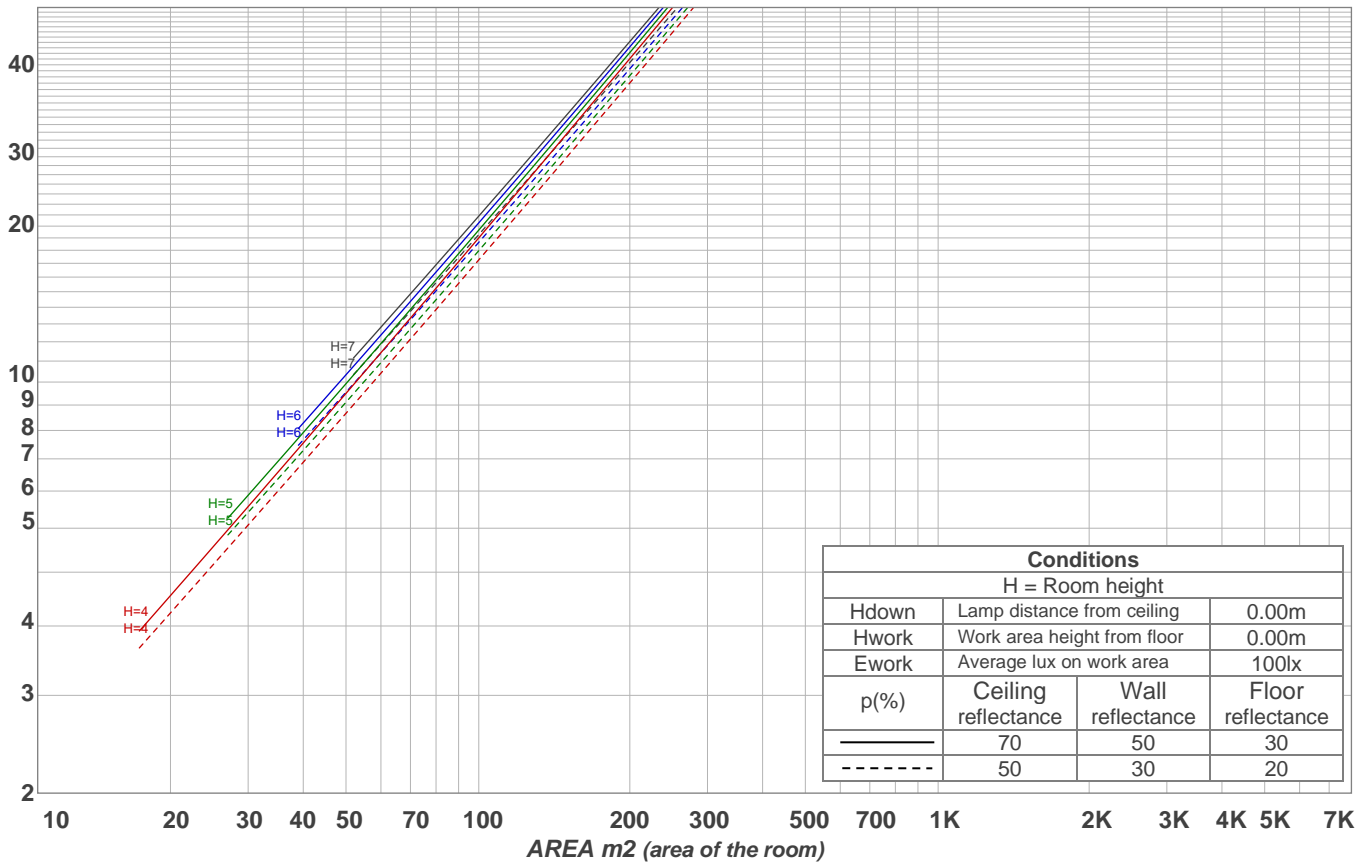
**Intensities in 270° c-plane**

0°	2°	4°	6°	8°	10°	12°	14°	16°	18°	20°	22°	24°	26°	28°	30°	32°	34°	36°	38°
2916	2890	2746	2486	2169	1817	1454	1103	804	555	359	216	123	73	43	26	17	13	11	8
100%	99%	94%	85%	74%	62%	50%	38%	28%	19%	12%	7%	4%	2%	1%	1%	1%	0%	0%	0%

<b>Beam angle 50%</b>	<b>Field angle 10%</b>	<b>Cutoff angle 2,5%</b>	<b>Intensity ratio in 120° cone</b>	<b>Intensity ratio in 90° cone</b>
<b>23.6°</b>	<b>41.8°</b>	<b>51.8°</b>	<b>98.1%</b>	<b>97.3%</b>

LAMPS (number of lamps)  
50

### Light planning Luminaire budgetary diagram



### Luminaire budgetary diagram AREA m2 (area of the room) Coefficients of Utilization

Ceiling reflectance	80				70				50			30			10			0			
Wall reflectance	70	50	30	10	70	50	30	10	50	30	10	50	30	10	50	30	10	50	30	10	0
Floor reflectance	20	20	20	20	20	20	20	20	20	20	20	20	20	20	20	20	20	20	20	20	0
RCR	(RCR: Room Cavity Ratio)																				
	Room Values are expressed as percentage of Lumens delivered to the task surface																				
0	119	119	119	119	116	116	116	116	111	111	111	106	106	106	102	102	102	100	100	100	
1	115	113	111	109	112	110	109	107	106	105	104	103	102	101	99	99	98	96	96	96	
2	111	107	104	102	109	106	103	101	103	100	99	100	98	96	97	96	95	93	93	93	
3	108	103	99	97	106	102	99	96	99	97	94	97	95	93	95	93	92	90	90	90	
4	105	99	95	92	103	98	95	92	96	93	91	94	92	90	93	91	89	88	88	88	
5	102	96	92	89	100	95	91	89	94	90	88	92	89	87	91	88	87	85	85	85	
6	99	93	89	86	98	92	89	86	91	88	85	90	87	85	89	86	84	83	83	83	
7	97	90	86	84	96	90	86	83	89	85	83	88	85	83	87	84	82	81	81	81	
8	94	88	84	81	93	87	84	81	87	83	81	86	83	81	85	82	80	79	79	79	
9	92	86	82	79	91	85	82	79	85	81	79	84	81	79	83	80	78	78	78	78	
10	90	84	80	77	89	83	80	77	83	79	77	82	79	77	81	79	77	76	76	76	

### Zonal Lumen Summary

0°-10°	10°-20°	20°-30°	30°-40°	40°-50°	50°-60°	60°-70°	70°-80°	80°-90°
221 lm	259 lm	53.8 lm	7.64 lm	3.47 lm	2.72 lm	3.39 lm	3.66 lm	3.32 lm
90°-100°	100°-110°	110°-120°	120°-130°	130°-140°	140°-150°	150°-160°	160°-170°	170°-180°
0.000 lm	0.000 lm	0.000 lm	0.000 lm	0.000 lm	0.000 lm	0.000 lm	0.000 lm	0.000 lm