

Light efficiency:



Output: 613 lm

Light quality:

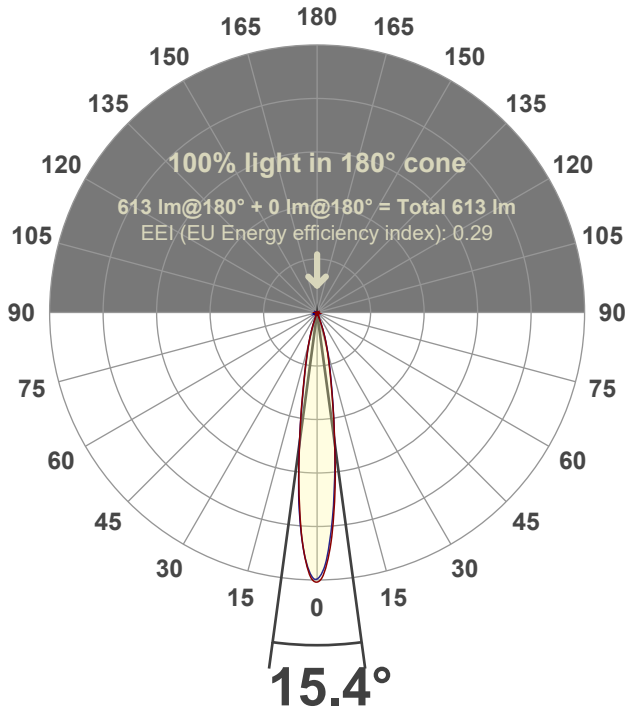


Peak: 6097 cd

Power: 14.6 W



Beam angle



Test number:

GR-F-F-A14-3019-SP-SQ-Rev2

Luminaire Model:

Graffiti Flat Square Fixed Downlight-A14-3019 15° Optic

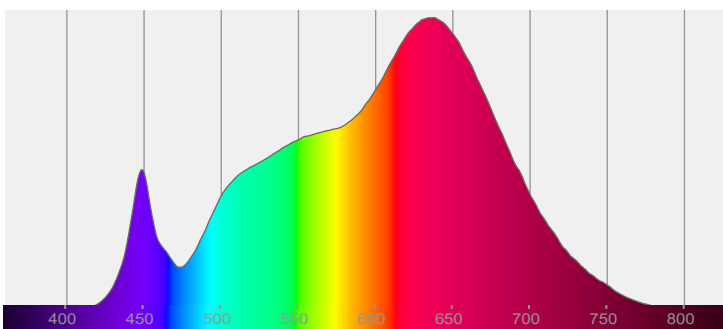
Date and time:

6/30/2022 1:06:03 PM

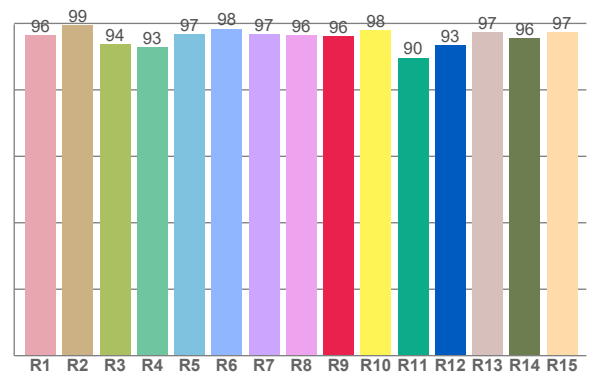
Delivered Lumens

613

Spectra



CRI: 96.3 (R1-R8)



Color parameters

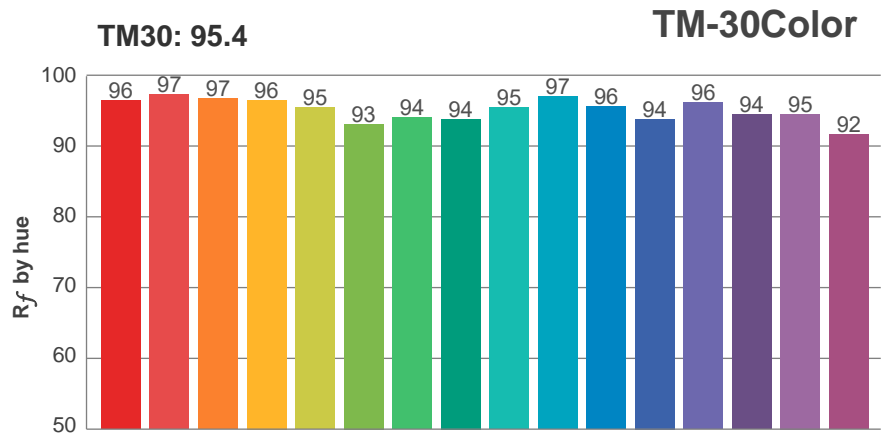
	Color rendering index	Red component	Color fidelity	Color gamut	Color quality scale	Color coordinate cie 1931	Color coordinate cie 1931	Color coordinate	Color coordinate	Color deviation from black body
	CRI	CRI R9	TM30 R _f	TM30 R _g	CQS	x	y	u	v	Δuv
	96.3	96.2	95.4	104.1	95.0	0.436	0.403	0.251	0.347	-0.0005

R_f 95.4

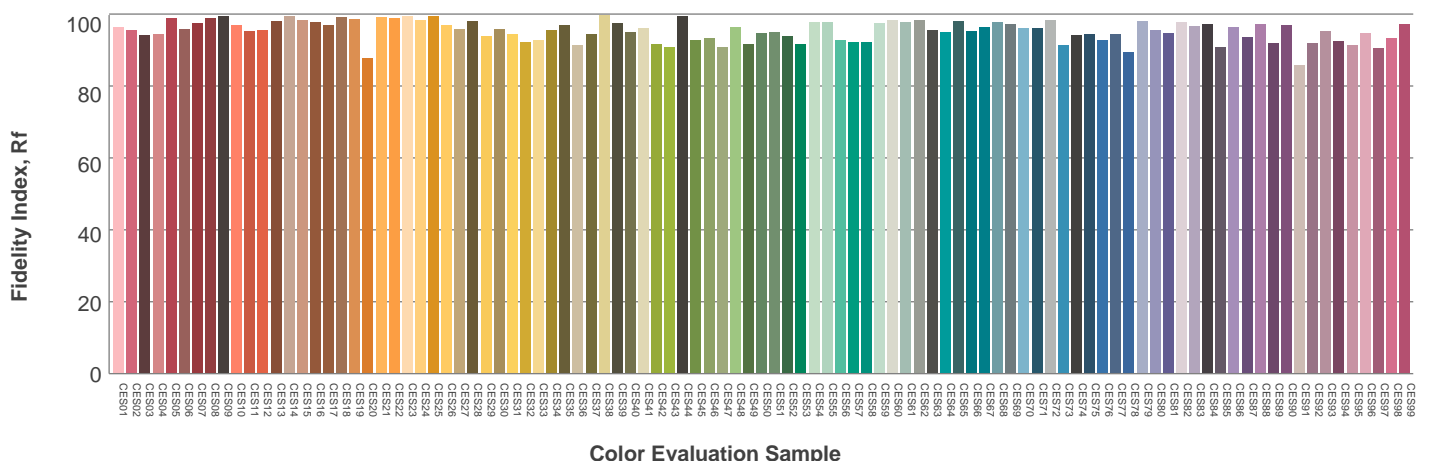
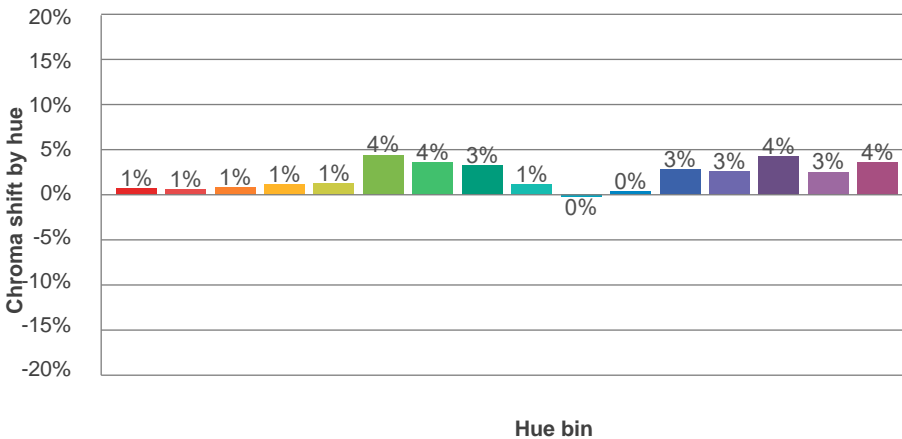
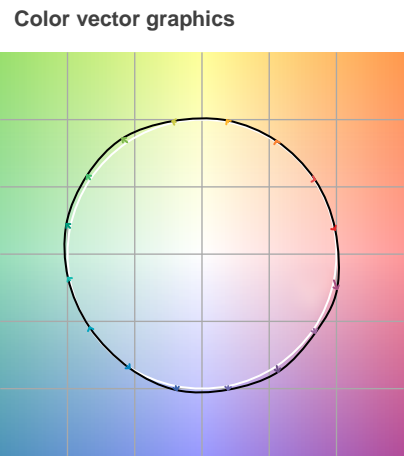
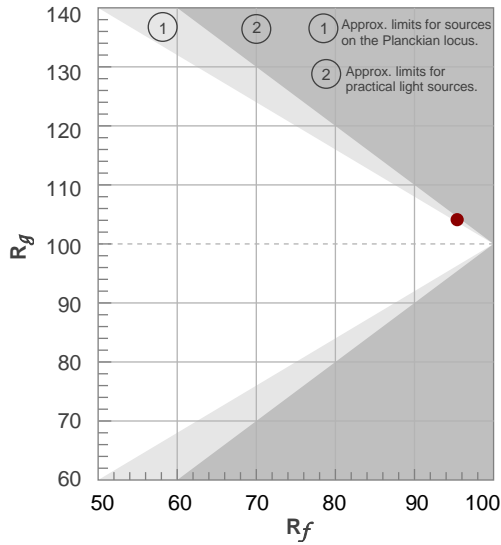
Fidelity index R_f

R_g 104.1

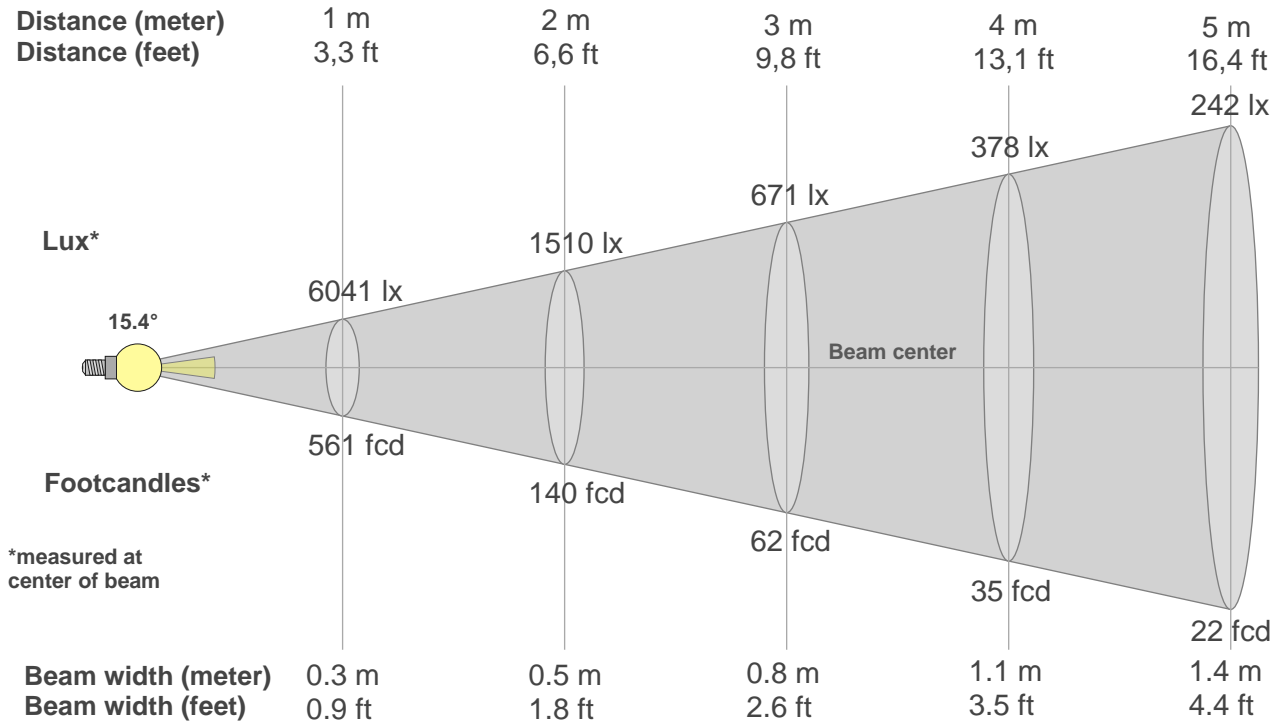
Gammut index R_g



Hue Bin	R_f	Graphic shifts (%)	
		Chroma	Hue
1	96	1%	-1%
2	97	1%	-1%
3	97	1%	1%
4	96	1%	1%
5	95	1%	2%
6	93	4%	2%
7	94	4%	-1%
8	94	3%	-2%
9	95	1%	-2%
10	97	0%	-1%
11	96	0%	2%
12	94	3%	1%
13	96	3%	-1%
14	94	4%	-1%
15	95	3%	-2%
16	92	4%	-6%



Beam details



Beam intensities from 1-20m

1m	2m	3m	4m	5m	6m	7m	8m	9m	10m	11m	12m	13m	14m	15m	16m	17m	18m	19m	20m
3.3ft	6.6ft	9.8ft	13.1ft	16.4ft	19.7ft	23ft	26.2ft	29.5ft	32.8ft	36.1ft	39.4ft	42.7ft	45.9ft	49.2ft	52.5ft	55.8ft	59.1ft	62.3ft	65.6ft
6041lx	1510lx	671lx	378lx	242lx	168lx	123lx	94lx	75lx	60lx	50lx	42lx	36lx	31lx	27lx	24lx	21lx	19lx	17lx	15lx
561.2fcd	140.3fcd	62.4fcd	35.1fcd	22.4fcd	15.6fcd	11.5fcd	8.8fcd	6.9fcd	5.6fcd	4.6fcd	3.9fcd	3.3fcd	2.9fcd	2.5fcd	2.2fcd	1.9fcd	1.7fcd	1.6fcd	1.4fcd

Intensities in 0° c-plane

0°	1°	2°	3°	4°	5°	6°	7°	8°	9°	10°	11°	12°	13°	14°	15°	16°	17°	18°	19°
6041	6071	5753	5423	4994	4480	3963	3427	2891	2458	2074	1726	1488	1249	1077	920	777	655	534	414
100%	100%	95%	90%	83%	74%	66%	57%	48%	41%	34%	29%	25%	21%	18%	15%	13%	11%	9%	7%

Intensities in 90° c-plane

0°	1°	2°	3°	4°	5°	6°	7°	8°	9°	10°	11°	12°	13°	14°	15°	16°	17°	18°	19°
6041	5884	5700	5269	4838	4352	3846	3354	2896	2437	2102	1784	1516	1307	1099	950	801	666	542	420
100%	97%	94%	87%	80%	72%	64%	56%	48%	40%	35%	30%	25%	22%	18%	16%	13%	11%	9%	7%

Intensities in 180° c-plane

0°	1°	2°	3°	4°	5°	6°	7°	8°	9°	10°	11°	12°	13°	14°	15°	16°	17°	18°	19°
6041	6058	5838	5483	5093	4543	3994	3440	2886	2383	1988	1593	1349	1122	931	780	630	504	378	270
100%	100%	97%	91%	84%	75%	66%	57%	48%	39%	33%	26%	22%	19%	15%	13%	10%	8%	6%	4%

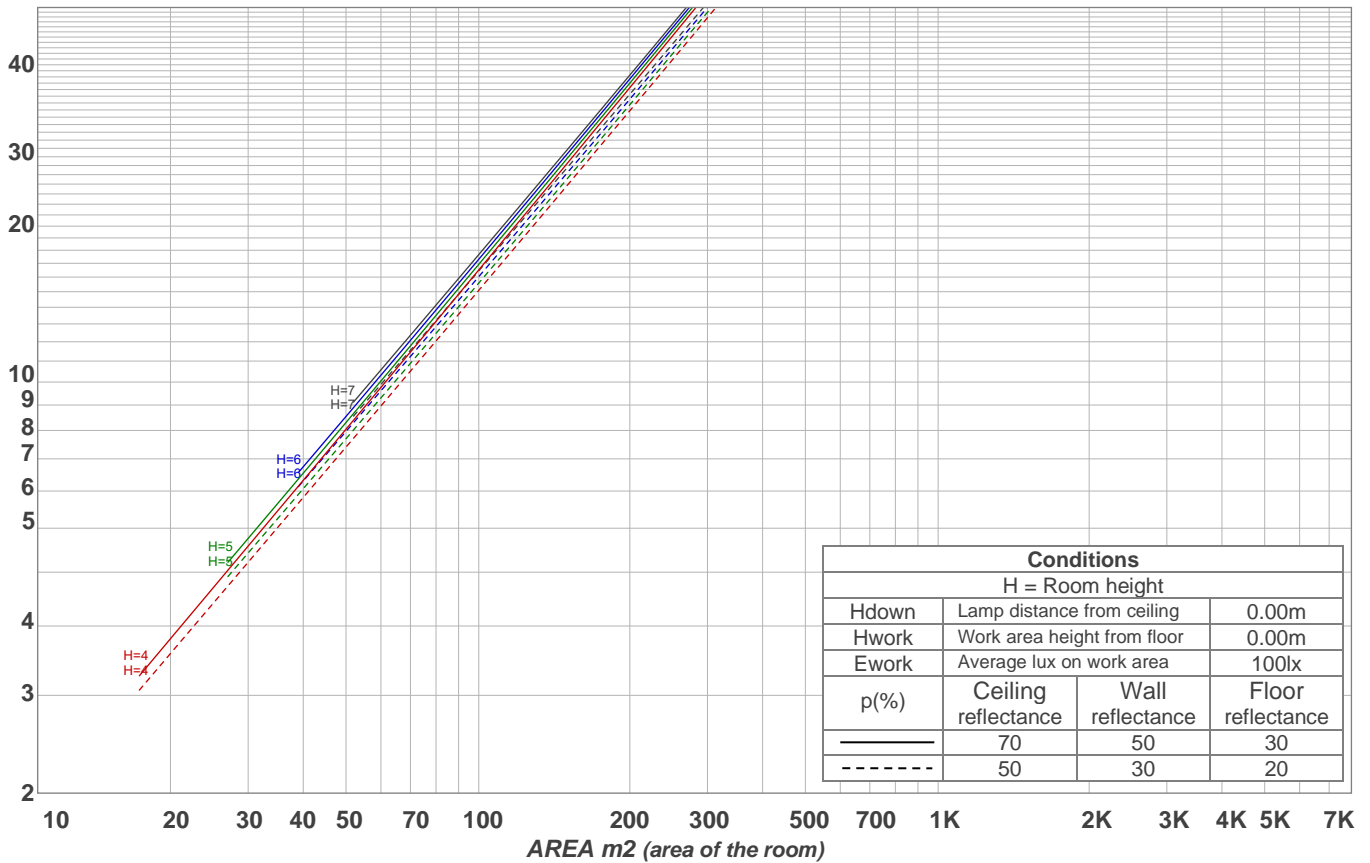
Intensities in 270° c-plane

0°	1°	2°	3°	4°	5°	6°	7°	8°	9°	10°	11°	12°	13°	14°	15°	16°	17°	18°	19°
6041	6004	5771	5537	5071	4597	4053	3450	2861	2383	1904	1568	1298	1056	897	738	609	485	369	265
100%	99%	96%	92%	84%	76%	67%	57%	47%	39%	32%	26%	21%	17%	15%	12%	10%	8%	6%	4%

Beam angle 50%	Field angle 10%	Cutoff angle 2,5%	Intensity ratio in 120° cone	Intensity ratio in 90° cone
15.4°	33.5°	41.7°	98.6%	98.1%

LAMPS (number of lamps)
50

Light planning Luminaire budgetary diagram



Luminaire budgetary diagram AREA m2 (area of the room) Coefficients of Utilization

Ceiling reflectance	80				70				50			30			10			0			
Wall reflectance	70	50	30	10	70	50	30	10	50	30	10	50	30	10	50	30	10	50	30	10	0
Floor reflectance	20	20	20	20	20	20	20	20	20	20	20	20	20	20	20	20	20	20	20	20	0
RCR	(RCR: Room Cavity Ratio)																				
	Room Values are expressed as percentage of Lumens delivered to the task surface																				
0	119	119	119	119	116	116	116	116	111	111	111	106	106	106	102	102	102	100	100	100	
1	115	113	112	110	113	111	110	108	107	106	105	104	103	102	100	100	99	99	99	97	
2	112	109	106	104	110	107	105	103	104	102	101	101	100	99	99	98	97	97	96	95	
3	109	105	102	100	108	104	101	99	102	99	97	99	98	96	97	96	95	95	94	93	
4	107	102	99	96	105	101	98	96	99	97	95	98	96	94	96	94	93	93	92	91	
5	105	100	96	94	103	99	96	93	97	95	93	96	94	92	95	93	91	91	90	89	
6	103	97	94	91	101	97	94	91	96	93	91	94	92	90	93	91	90	89	88	87	
7	101	95	92	90	100	95	92	89	94	91	89	93	90	89	92	90	88	87	86	85	
8	99	93	90	88	98	93	90	88	92	89	87	91	89	87	91	88	87	86	85	84	
9	97	92	89	86	96	91	88	86	91	88	86	90	88	86	89	87	86	85	84	83	
10	96	90	87	85	95	90	87	85	89	87	85	89	86	84	88	86	84	83	82	81	

Zonal Lumen Summary

0°-10°	10°-20°	20°-30°	30°-40°	40°-50°	50°-60°	60°-70°	70°-80°	80°-90°
343 lm	236 lm	18.2 lm	2.95 lm	1.84 lm	2.06 lm	2.52 lm	2.77 lm	3.20 lm
90°-100°	100°-110°	110°-120°	120°-130°	130°-140°	140°-150°	150°-160°	160°-170°	170°-180°
0.000 lm	0.000 lm	0.000 lm	0.000 lm	0.000 lm	0.000 lm	0.000 lm	0.000 lm	0.000 lm