

Light efficiency:



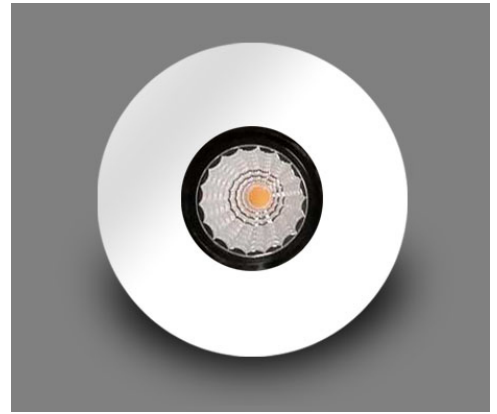
Output: 549 lm

Light quality:

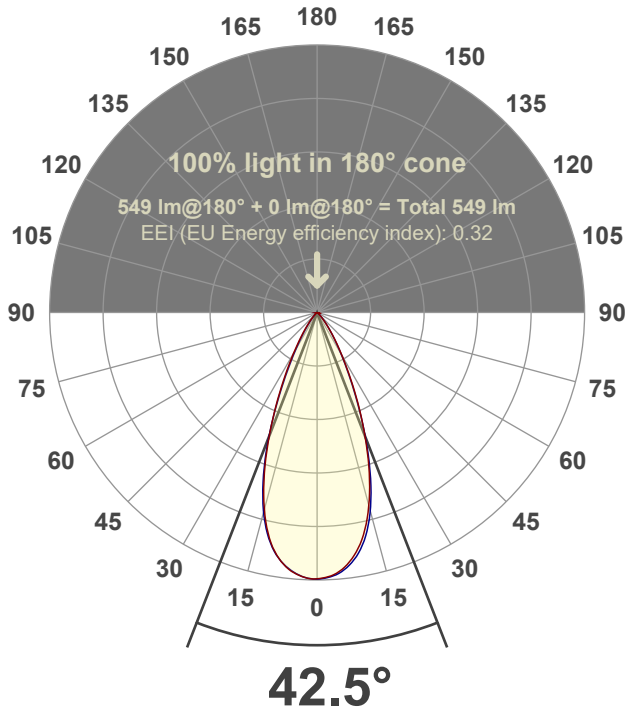


Peak: 990 cd

Power: 14.6 W



Beam angle



Test number:

GR-F-F-A14-3019-WF-RD-91A-Rev2

Luminaire Model:

Graffiti Flat Round Fixed Downlight-A14-3019 60° Optic-Solite

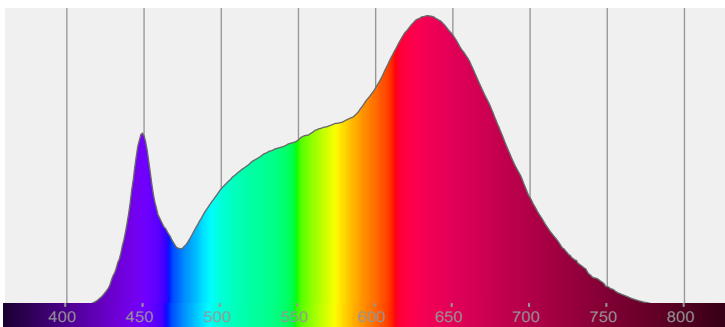
Date and time:

3/24/2022 10:07:25 PM

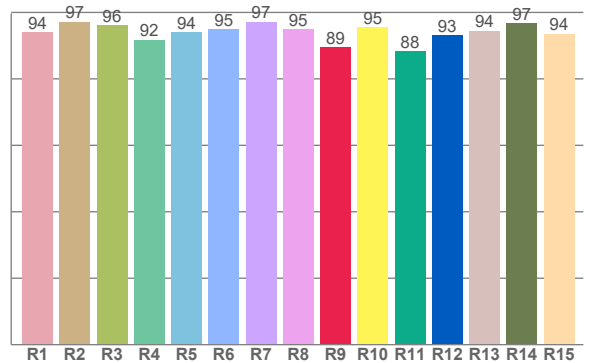
Delivered Lumens

549

Spectra



CRI: 95.0 (R1-R8)



Color parameters

	Color rendering index	Red component	Color fidelity	Color gamut	Color quality scale	Color coordinate cie 1931	Color coordinate cie 1931	Color coordinate	Color coordinate	Color deviation from black body
	CRI	CRI R9	TM30 R _f	TM30 R _g	CQS	x	y	u	v	Δuv
	95.0	89.5	94.8	105.5	95.0	0.422	0.387	0.248	0.341	-0.0049

R_f 94.8

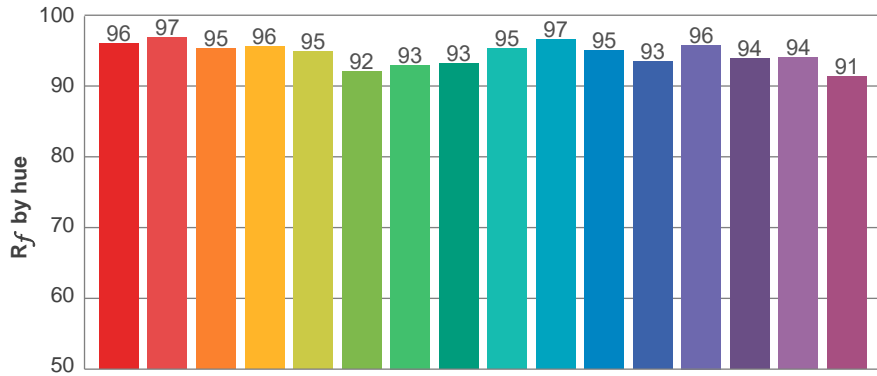
Fidelity index R_f

R_g 105.5

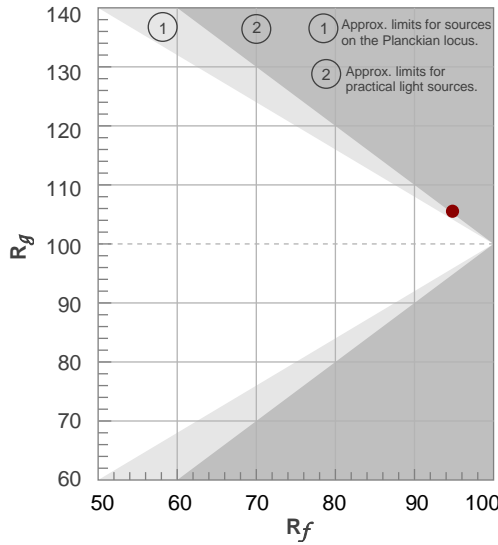
Gammut index R_g

TM30: 94.8

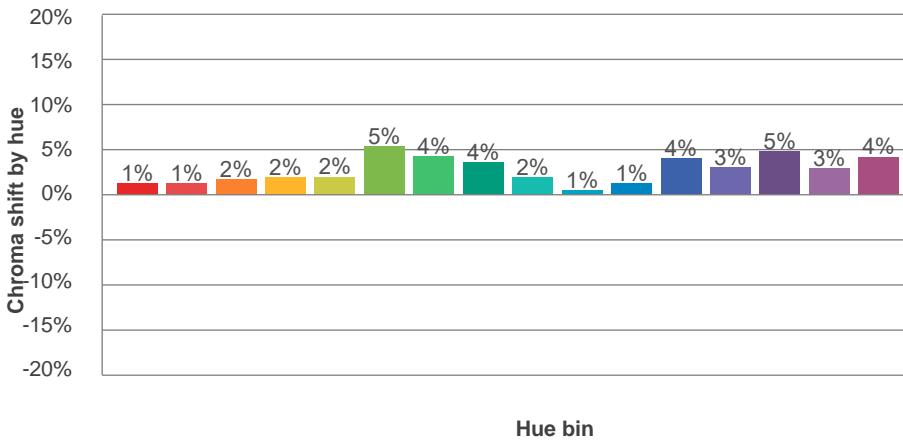
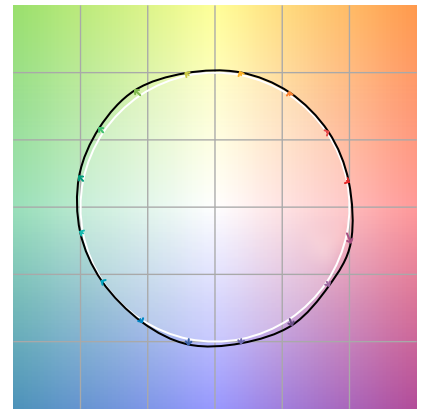
TM-30Color



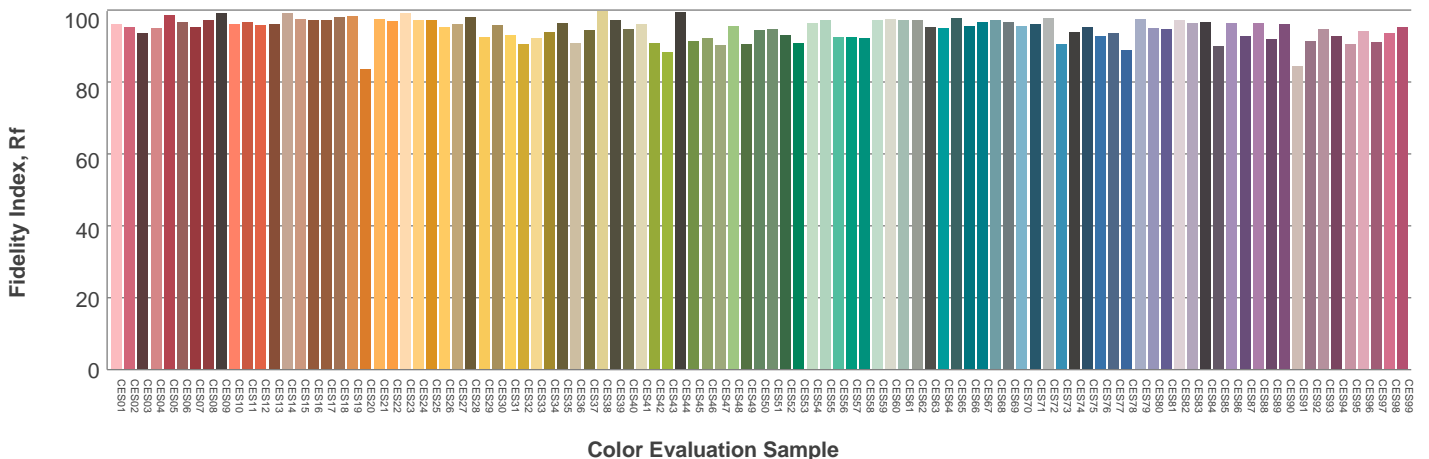
Hue Bin	R _f	Graphic shifts (%)	
		Chroma	Hue
1	96	1%	-1%
2	97	1%	0%
3	95	2%	1%
4	96	2%	1%
5	95	2%	2%
6	92	5%	1%
7	93	4%	-1%
8	93	4%	-3%
9	95	2%	-2%
10	97	1%	-1%
11	95	1%	2%
12	93	4%	1%
13	96	3%	-1%
14	94	5%	-1%
15	94	3%	-1%
16	91	4%	-6%



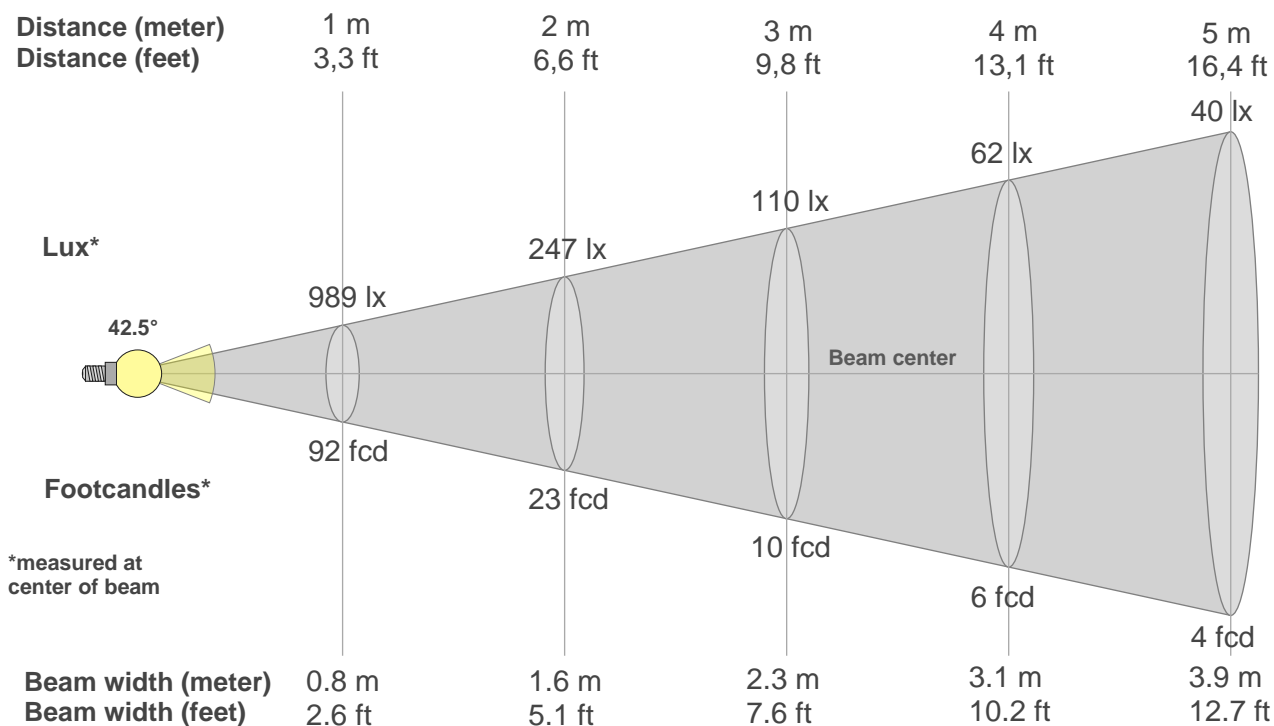
Color vector graphics



Color distortion



Beam details



Beam intensities from 1-20m

1m	2m	3m	4m	5m	6m	7m	8m	9m	10m	11m	12m	13m	14m	15m	16m	17m	18m	19m	20m
3.3ft	6.6ft	9.8ft	13.1ft	16.4ft	19.7ft	23ft	26.2ft	29.5ft	32.8ft	36.1ft	39.4ft	42.7ft	45.9ft	49.2ft	52.5ft	55.8ft	59.1ft	62.3ft	65.6ft
989lx	247lx	110lx	62lx	40lx	27lx	20lx	15lx	12lx	10lx	8lx	7lx	6lx	5lx	4lx	4lx	3lx	3lx	3lx	2lx
91.9fcd	23fcd	10.2fcd	5.7fcd	3.7fcd	2.6fcd	1.9fcd	1.4fcd	1.1fcd	0.9fcd	0.8fcd	0.6fcd	0.5fcd	0.5fcd	0.4fcd	0.4fcd	0.3fcd	0.3fcd	0.3fcd	0.2fcd

Intensities in 0° c-plane

0°	2°	4°	6°	8°	10°	12°	14°	16°	18°	20°	22°	24°	26°	28°	30°	32°	34°	36°	38°
989	983	973	953	923	885	836	777	707	629	546	463	383	309	245	192	149	115	87	66
100%	99%	98%	96%	93%	89%	85%	79%	71%	64%	55%	47%	39%	31%	25%	19%	15%	12%	9%	7%

Intensities in 90° c-plane

0°	2°	4°	6°	8°	10°	12°	14°	16°	18°	20°	22°	24°	26°	28°	30°	32°	34°	36°	38°
989	986	977	960	935	902	856	796	725	643	554	462	377	301	236	184	143	111	84	64
100%	100%	99%	97%	95%	91%	87%	81%	73%	65%	56%	47%	38%	30%	24%	19%	14%	11%	9%	6%

Intensities in 180° c-plane

0°	2°	4°	6°	8°	10°	12°	14°	16°	18°	20°	22°	24°	26°	28°	30°	32°	34°	36°	38°
989	987	978	962	936	901	854	794	720	637	549	460	374	298	234	181	138	105	80	60
100%	100%	99%	97%	95%	91%	86%	80%	73%	64%	55%	47%	38%	30%	24%	18%	14%	11%	8%	6%

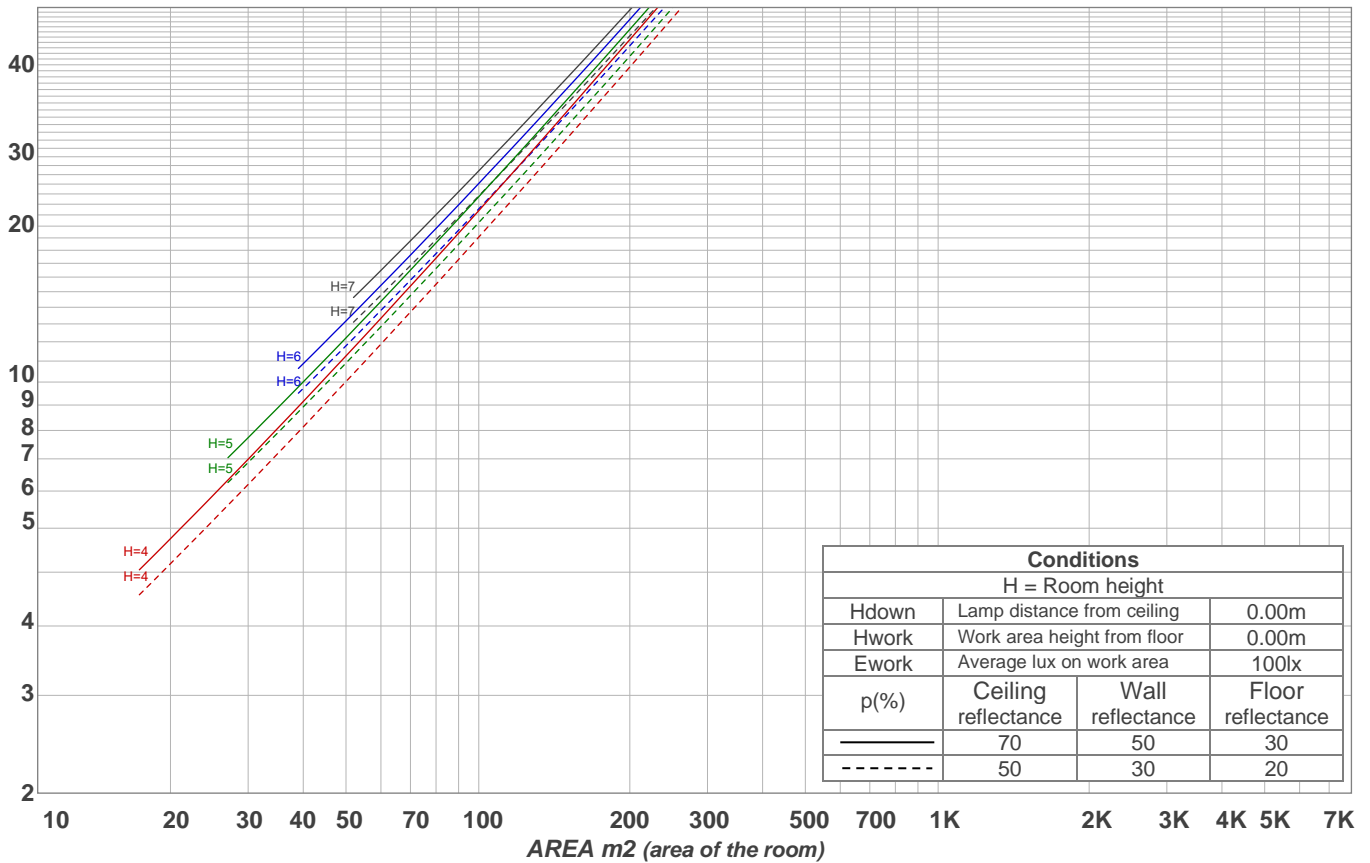
Intensities in 270° c-plane

0°	2°	4°	6°	8°	10°	12°	14°	16°	18°	20°	22°	24°	26°	28°	30°	32°	34°	36°	38°
989	987	976	959	937	905	859	801	731	649	558	460	368	285	215	163	124	93	68	49
100%	100%	99%	97%	95%	91%	87%	81%	74%	66%	56%	47%	37%	29%	22%	16%	13%	9%	7%	5%

Beam angle 50%	Field angle 10%	Cutoff angle 2,5%	Intensity ratio in 120° cone	Intensity ratio in 90° cone
42.5°	68.9°	88.1°	97.7%	95.2%

LAMPS (number of lamps)
50

Light planning Luminaire budgetary diagram



Luminaire budgetary diagram AREA m2 (area of the room) Coefficients of Utilization

Ceiling reflectance	80				70				50			30			10			0			
Wall reflectance	70	50	30	10	70	50	30	10	50	30	10	50	30	10	50	30	10	50	30	10	0
Floor reflectance	20	20	20	20	20	20	20	20	20	20	20	20	20	20	20	20	20	20	20	20	0
RCR	(RCR: Room Cavity Ratio)																				
	Room Values are expressed as percentage of Lumens delivered to the task surface																				
0	119	119	119	119	116	116	116	116	111	111	111	106	106	106	102	102	102	100	100	100	
1	114	111	109	106	111	109	107	105	105	103	101	101	100	98	98	97	96	94	94	94	
2	109	104	100	97	106	102	99	96	99	96	94	96	94	92	93	91	90	88	88	88	
3	104	98	93	89	102	96	92	89	94	90	87	91	88	86	89	87	85	83	83	83	
4	99	92	87	83	97	91	86	83	89	85	82	87	84	81	85	82	80	78	78	78	
5	95	87	82	78	93	86	81	78	85	80	77	83	79	76	81	78	76	74	74	74	
6	91	83	77	73	90	82	77	73	81	76	73	79	75	72	78	75	72	70	70	70	
7	87	79	73	70	86	78	73	69	77	72	69	76	72	69	75	71	68	67	67	67	
8	84	75	70	66	82	75	69	66	73	69	66	72	68	65	72	68	65	64	64	64	
9	80	72	66	63	79	71	66	63	70	66	62	69	65	62	69	65	62	61	61	61	
10	77	69	63	60	76	68	63	60	67	63	60	67	62	59	66	62	59	58	58	58	

Zonal Lumen Summary

0°-10°	10°-20°	20°-30°	30°-40°	40°-50°	50°-60°	60°-70°	70°-80°	80°-90°
90.3 lm	206 lm	154 lm	59.9 lm	18.2 lm	7.18 lm	5.49 lm	4.28 lm	2.69 lm
90°-100°	100°-110°	110°-120°	120°-130°	130°-140°	140°-150°	150°-160°	160°-170°	170°-180°
0.000 lm	0.000 lm	0.000 lm	0.000 lm	0.000 lm	0.000 lm	0.000 lm	0.000 lm	0.000 lm