

Light efficiency:



Output: 512 lm

Light quality:

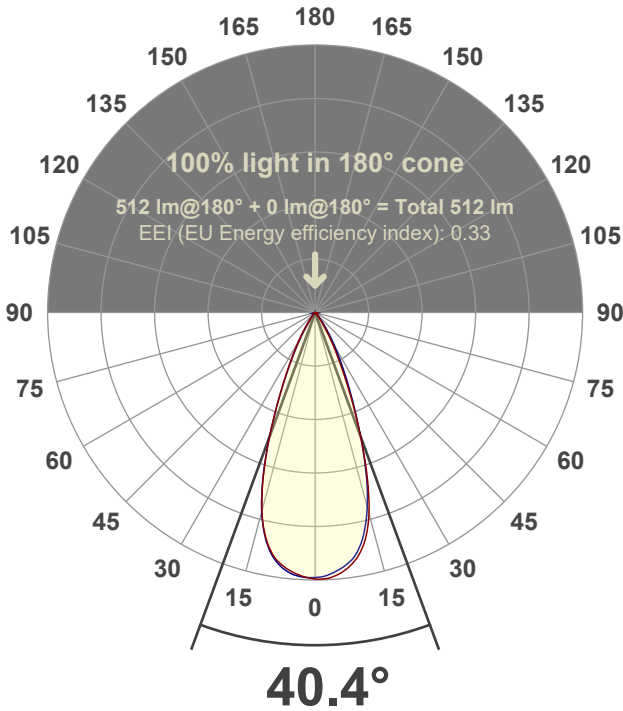


Peak: 1061 cd

Power: 14.6 W



Beam angle



Test number:

GR-F-F-A14-3019-WF-SQ-91A-Rev2

Luminaire Model:

Graffiti Flat Square Downlight-A14-3019 60° Optic-Solite

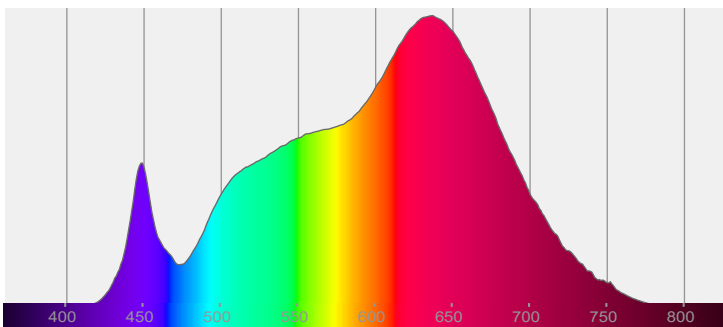
Date and time:

6/21/2022 9:32:26 PM

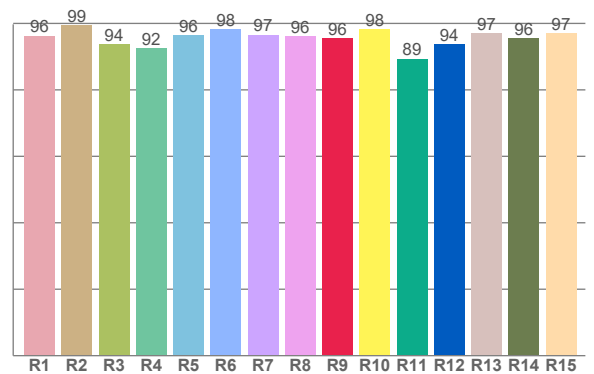
Delivered Lumens

512

Spectra



CRI: 96.2 (R1-R8)



Color parameters

	Color rendering index	Red component	Color fidelity	Color gamut	Color quality scale	Color coordinate cie 1931	Color coordinate cie 1931	Color coordinate	Color coordinate	Color deviation from black body
	CRI	CRI R9	TM30 R <sub>f</sub>	TM30 R <sub>g</sub>	CQS	x	y	u	v	Δuv
	96.2	95.6	95.2	104.4	94.8	0.435	0.401	0.250	0.347	-0.0009

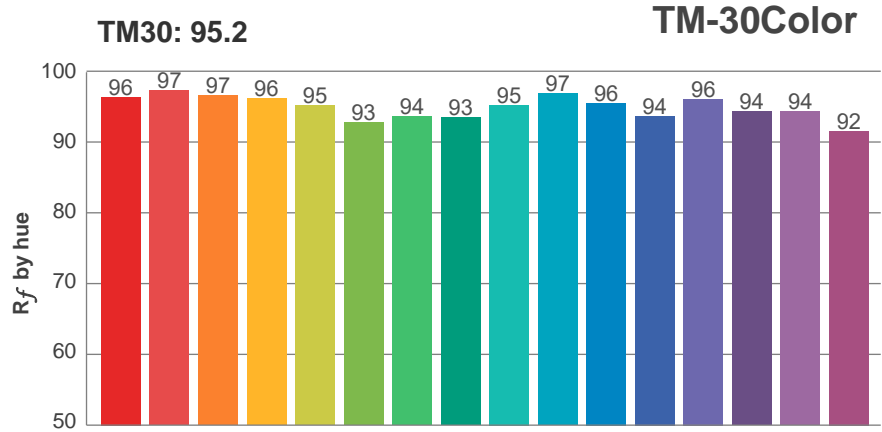
**$R_f$  95.2**

Fidelity index  $R_f$

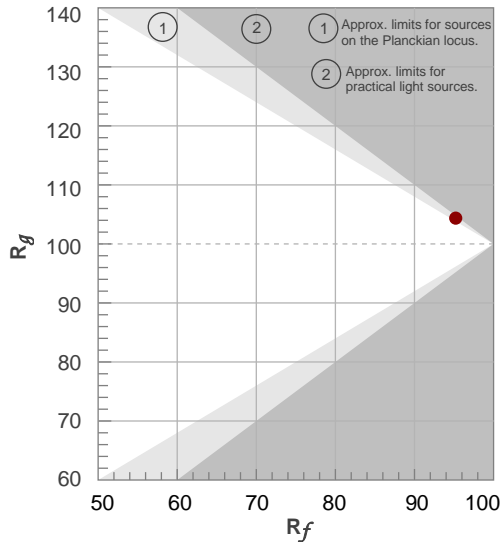
---

**$R_g$  104.4**

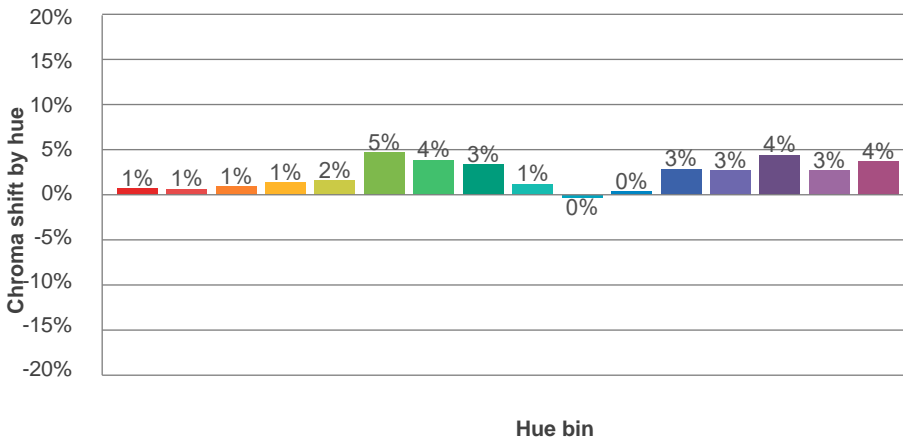
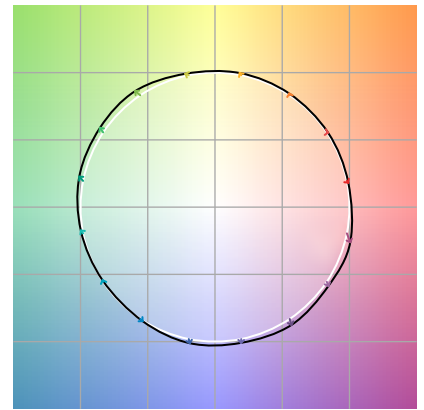
Gammut index  $R_g$



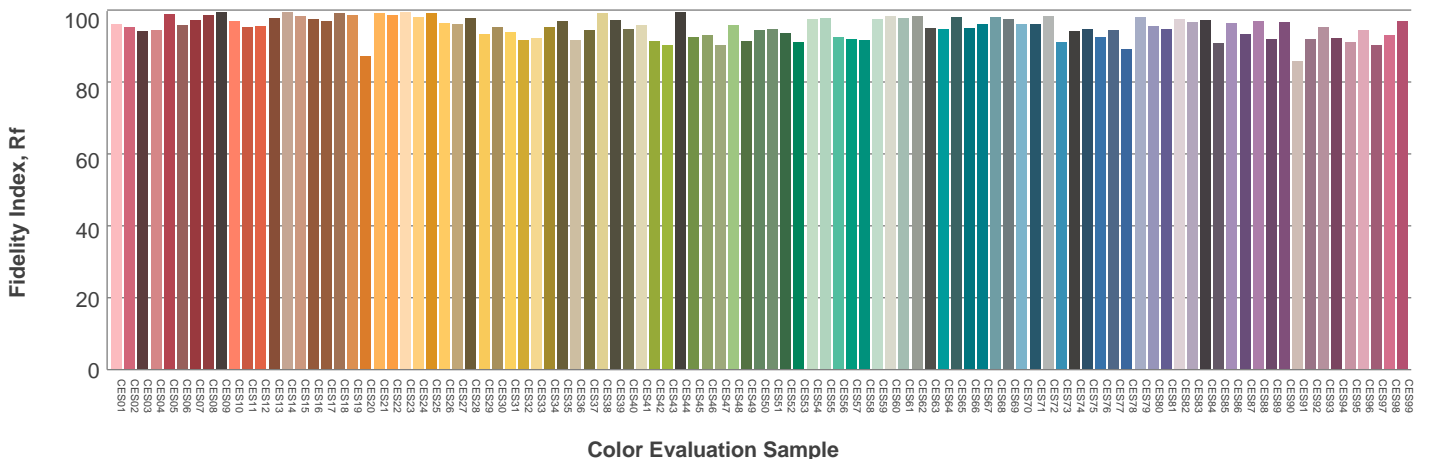
Hue Bin	$R_f$	Graphic shifts (%)	
		Chroma	Hue
1	96	1%	-2%
2	97	1%	-1%
3	97	1%	1%
4	96	1%	1%
5	95	2%	2%
6	93	5%	1%
7	94	4%	-2%
8	93	3%	-3%
9	95	1%	-2%
10	97	0%	-1%
11	96	0%	2%
12	94	3%	1%
13	96	3%	-1%
14	94	4%	-1%
15	94	3%	-2%
16	92	4%	-6%



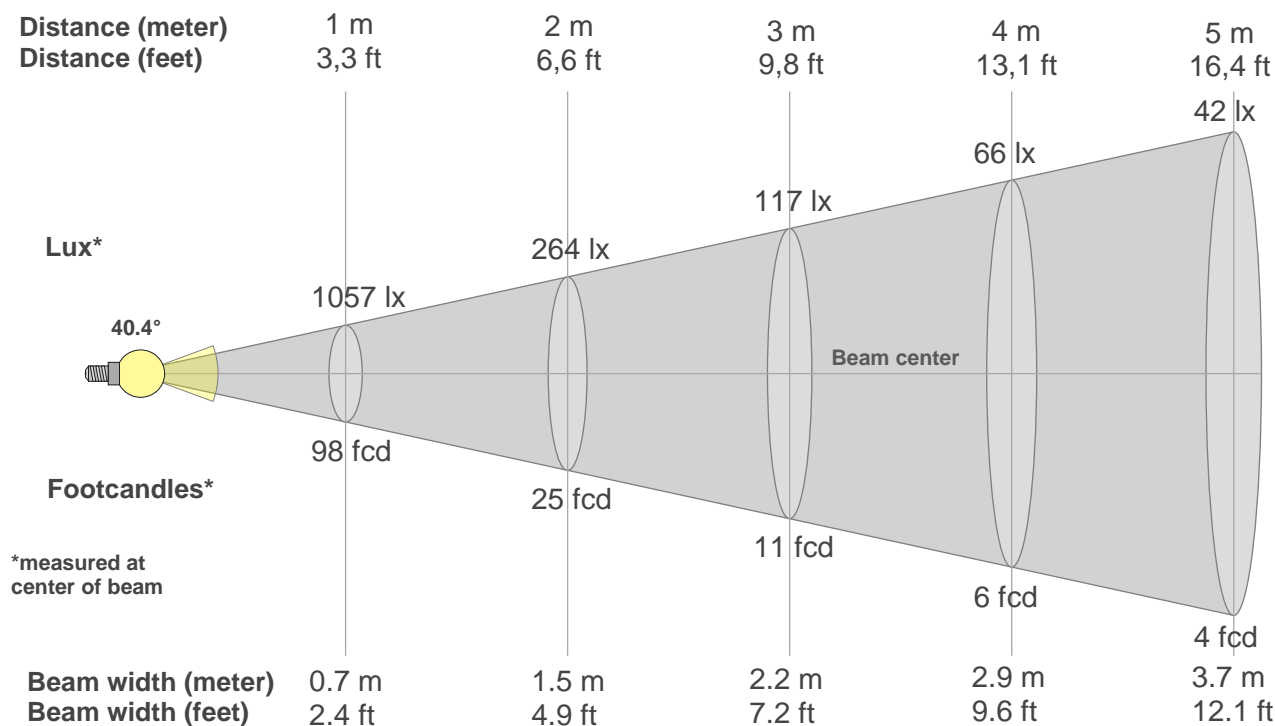
Color vector graphics



Color distortion



## Beam details



### Beam intensities from 1-20m

1m	2m	3m	4m	5m	6m	7m	8m	9m	10m	11m	12m	13m	14m	15m	16m	17m	18m	19m	20m
3.3ft	6.6ft	9.8ft	13.1ft	16.4ft	19.7ft	23ft	26.2ft	29.5ft	32.8ft	36.1ft	39.4ft	42.7ft	45.9ft	49.2ft	52.5ft	55.8ft	59.1ft	62.3ft	65.6ft
1057lx	264lx	117lx	66lx	42lx	29lx	22lx	17lx	13lx	11lx	9lx	7lx	6lx	5lx	5lx	4lx	4lx	3lx	3lx	3lx
98.2fcd	24.6fcd	10.9fcd	6.1fcd	3.9fcd	2.7fcd	2fcd	1.5fcd	1.2fcd	1fcd	0.8fcd	0.7fcd	0.6fcd	0.5fcd	0.4fcd	0.4fcd	0.3fcd	0.3fcd	0.3fcd	0.2fcd

### Intensities in 0° c-plane

0°	2°	4°	6°	8°	10°	12°	14°	16°	18°	20°	22°	24°	26°	28°	30°	32°	34°	36°	38°
1057	1060	1052	1038	1016	985	937	869	777	664	541	424	324	242	178	131	95	69	48	32
100%	100%	100%	98%	96%	93%	89%	82%	74%	63%	51%	40%	31%	23%	17%	12%	9%	6%	5%	3%

### Intensities in 90° c-plane

0°	2°	4°	6°	8°	10°	12°	14°	16°	18°	20°	22°	24°	26°	28°	30°	32°	34°	36°	38°
1057	1051	1038	1021	999	966	916	844	755	651	540	434	344	273	213	164	124	92	68	48
100%	99%	98%	97%	94%	91%	87%	80%	71%	62%	51%	41%	33%	26%	20%	16%	12%	9%	6%	5%

### Intensities in 180° c-plane

0°	2°	4°	6°	8°	10°	12°	14°	16°	18°	20°	22°	24°	26°	28°	30°	32°	34°	36°	38°
1057	1055	1043	1028	1006	975	929	860	768	659	541	424	325	248	187	139	101	72	50	34
100%	100%	99%	97%	95%	92%	88%	81%	73%	62%	51%	40%	31%	23%	18%	13%	10%	7%	5%	3%

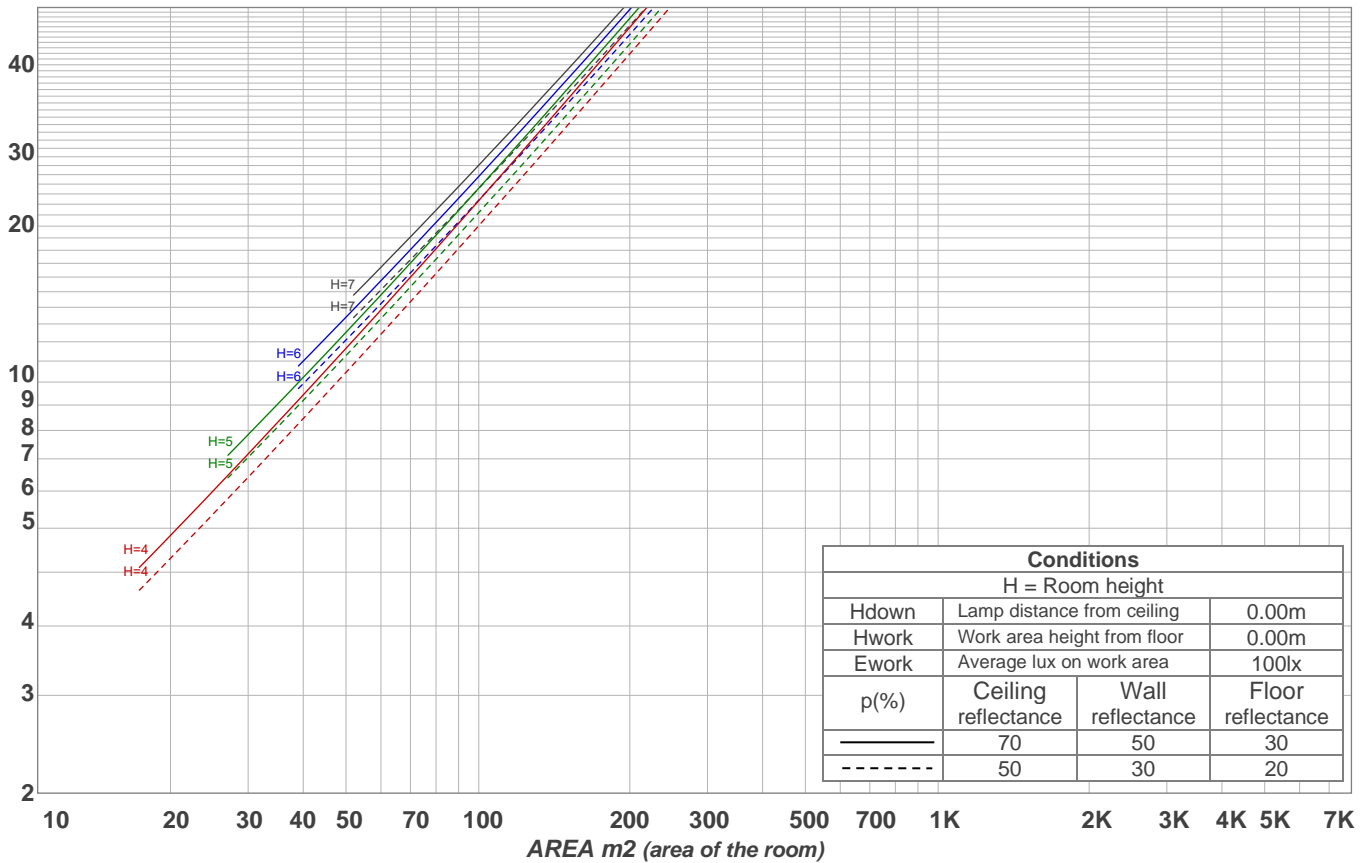
### Intensities in 270° c-plane

0°	2°	4°	6°	8°	10°	12°	14°	16°	18°	20°	22°	24°	26°	28°	30°	32°	34°	36°	38°
1057	1054	1049	1037	1016	982	930	861	772	663	541	421	319	235	168	118	83	57	39	27
100%	100%	99%	98%	96%	93%	88%	81%	73%	63%	51%	40%	30%	22%	16%	11%	8%	5%	4%	3%

Beam angle 50%	Field angle 10%	Cutoff angle 2,5%	Intensity ratio in 120° cone	Intensity ratio in 90° cone
40.4°	63.4°	78.7°	98.1%	97.1%

LAMPS (number of lamps)  
50

### Light planning Luminaire budgetary diagram



### Luminaire budgetary diagram AREA m2 (area of the room) Coefficients of Utilization

Ceiling reflectance	80				70				50			30			10			0			
Wall reflectance	70	50	30	10	70	50	30	10	50	30	10	50	30	10	50	30	10	50	30	10	0
Floor reflectance	20	20	20	20	20	20	20	20	20	20	20	20	20	20	20	20	20	20	20	20	0
RCR	(RCR: Room Cavity Ratio)																				
	Room Values are expressed as percentage of Lumens delivered to the task surface																				
0	119	119	119	119	116	116	116	116	111	111	111	106	106	106	102	102	102	100	100		
1	114	111	109	107	112	109	107	105	105	104	102	102	100	99	98	97	96	95	95		
2	109	105	101	98	107	103	100	97	100	97	95	97	95	93	94	93	91	90	90		
3	105	99	95	91	103	98	94	91	95	92	89	93	90	88	91	88	87	85	85		
4	101	94	89	86	99	93	89	85	91	87	84	89	86	83	87	85	82	81	81		
5	97	90	85	81	95	89	84	81	87	83	80	85	82	79	84	81	79	77	77		
6	93	85	80	77	92	85	80	76	83	79	76	82	78	75	81	78	75	74	74		
7	90	82	77	73	88	81	76	73	80	76	72	79	75	72	78	74	72	71	71		
8	86	78	73	70	85	78	73	70	77	72	69	76	72	69	75	71	69	68	68		
9	83	75	70	67	82	75	70	67	74	69	66	73	69	66	72	69	66	65	65		
10	80	72	67	64	79	72	67	64	71	67	64	70	66	63	70	66	63	62	62		

### Zonal Lumen Summary

0°-10°	10°-20°	20°-30°	30°-40°	40°-50°	50°-60°	60°-70°	70°-80°	80°-90°
97.3 lm	219 lm	135 lm	40.9 lm	8.20 lm	2.76 lm	3.56 lm	3.43 lm	2.52 lm
90°-100°	100°-110°	110°-120°	120°-130°	130°-140°	140°-150°	150°-160°	160°-170°	170°-180°
0.000 lm	0.000 lm	0.000 lm	0.000 lm	0.000 lm	0.000 lm	0.000 lm	0.000 lm	0.000 lm