

Light efficiency:



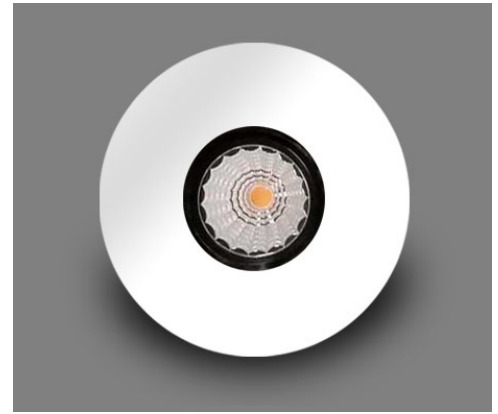
Output: 795 lm

Light quality:

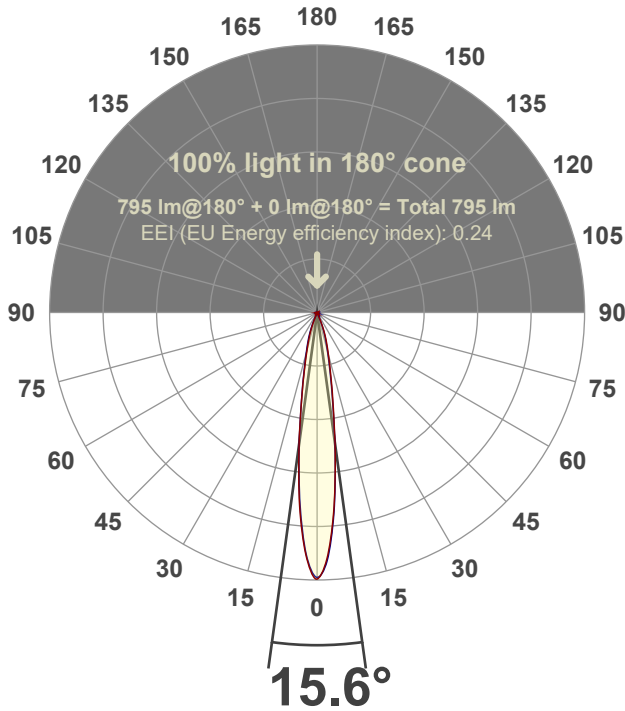


Peak: 7050 cd

Power: 15.0 W



Beam angle



Test number:

GR-F-F-A14-3022-SP-RD-Rev2

Luminaire Model:

Graffiti Flat Round Fixed Downlight-A14-3022 15° Optic

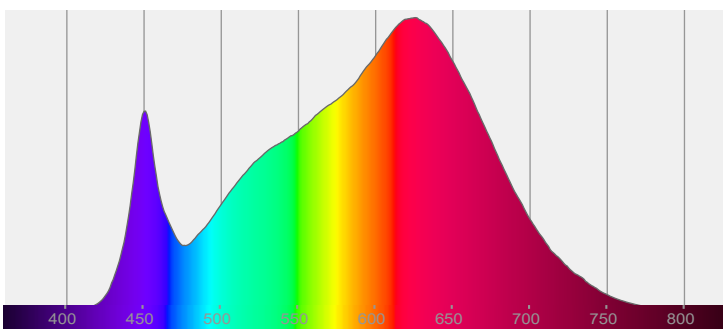
Date and time:

3/24/2022 4:13:33 PM

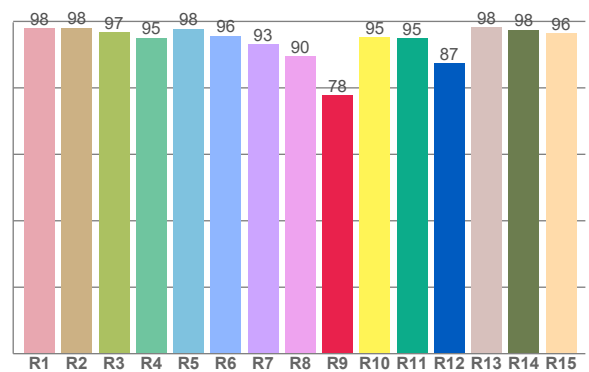
Delivered Lumens

795

Spectra



CRI: 95.5 (R1-R8)



Color parameters

	Color rendering index	Red component	Color fidelity	Color gamut	Color quality scale	Color coordinate cie 1931	Color coordinate cie 1931	Color coordinate	Color coordinate	Color deviation from black body
	CRI	CRI R9	TM30 R <sub>f</sub>	TM30 R <sub>g</sub>	CQS	x	y	u	v	Δuv
	95.5	77.8	91.9	103.8	90.8	0.422	0.384	0.250	0.341	-0.0063

**$R_f$  91.9**

Fidelity index  $R_f$

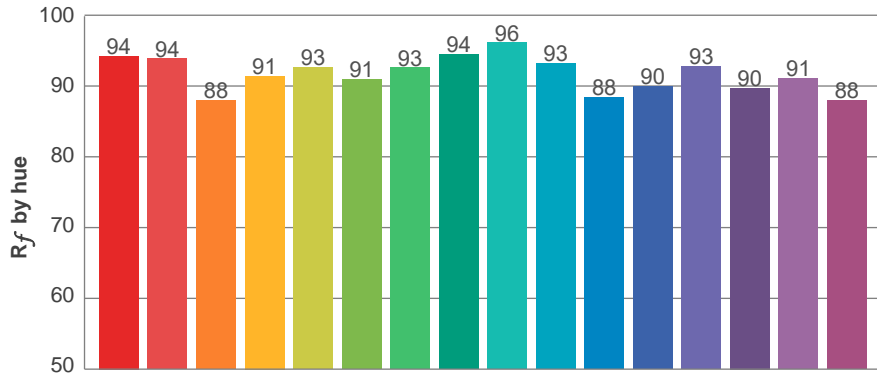
---

**$R_g$  103.8**

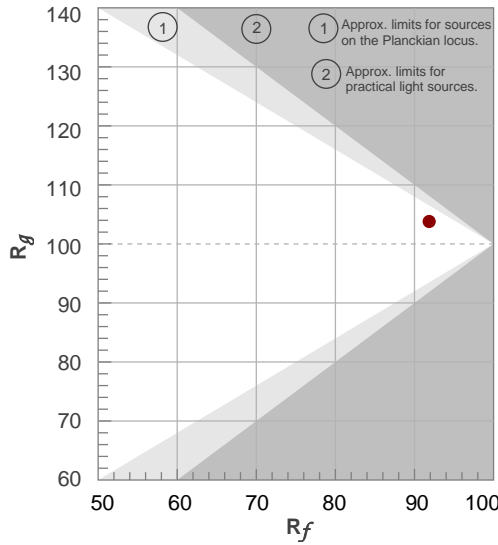
Gammut index  $R_g$

TM30: 91.9

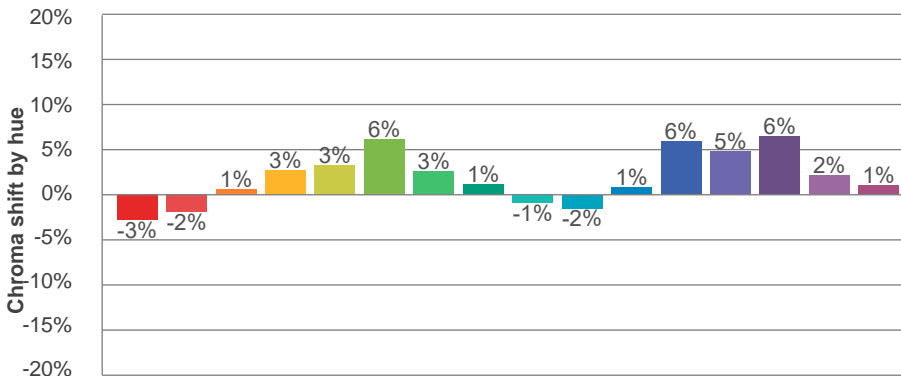
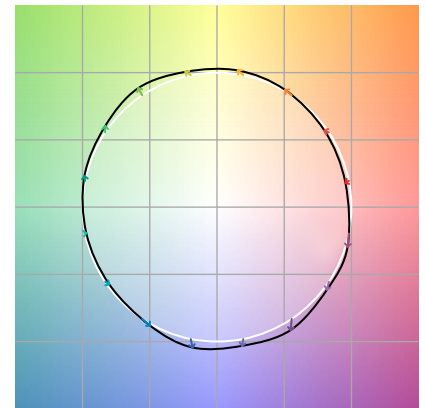
TM-30Color



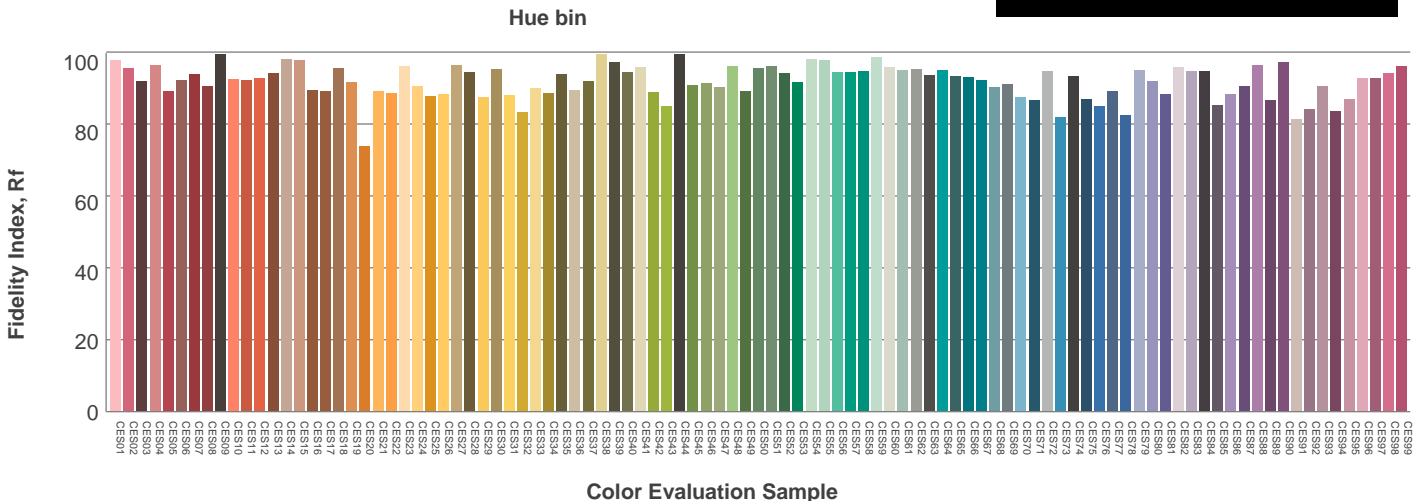
Hue Bin	$R_f$	Graphic shifts (%)	
		Chroma	Hue
1	94	-3%	-1%
2	94	-2%	3%
3	88	1%	6%
4	91	3%	5%
5	93	3%	3%
6	91	6%	0%
7	93	3%	-4%
8	94	1%	-3%
9	96	-1%	0%
10	93	-2%	3%
11	88	1%	8%
12	90	6%	2%
13	93	5%	-2%
14	90	6%	-5%
15	91	2%	-6%
16	88	1%	-10%



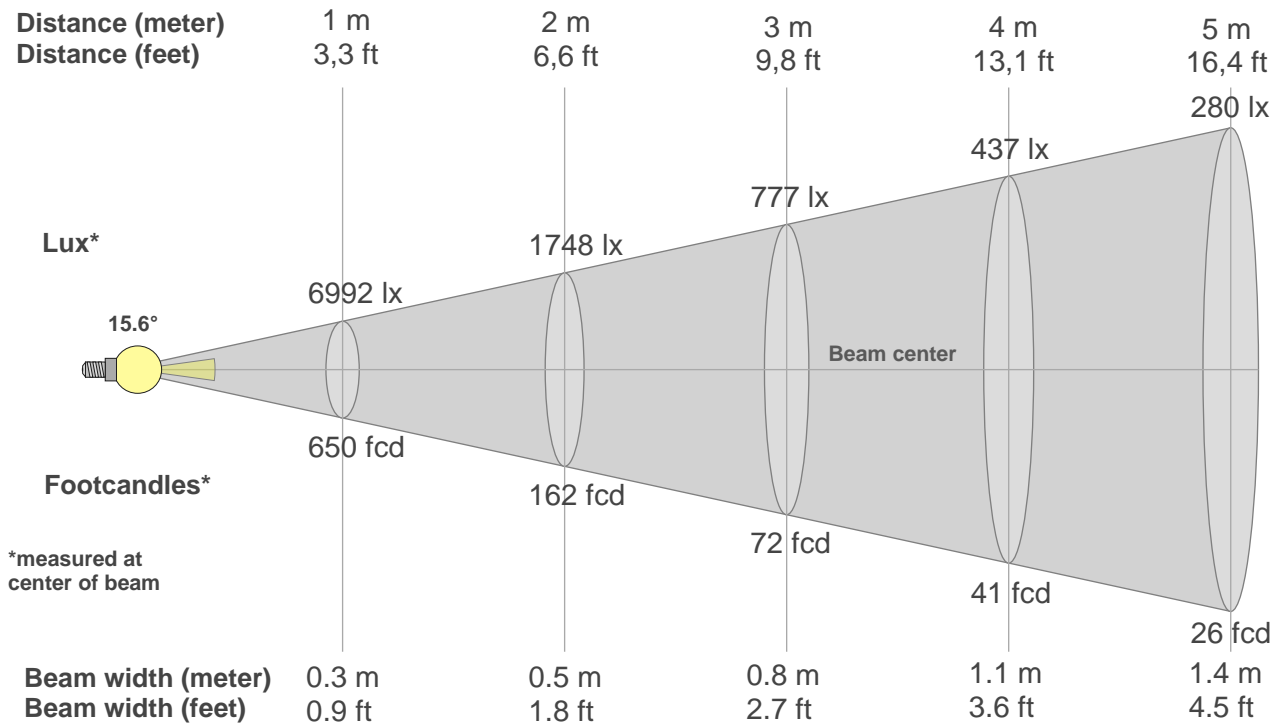
Color vector graphics



Color distortion



### Beam details



#### Beam intensities from 1-20m

1m	2m	3m	4m	5m	6m	7m	8m	9m	10m	11m	12m	13m	14m	15m	16m	17m	18m	19m	20m
3.3ft	6.6ft	9.8ft	13.1ft	16.4ft	19.7ft	23ft	26.2ft	29.5ft	32.8ft	36.1ft	39.4ft	42.7ft	45.9ft	49.2ft	52.5ft	55.8ft	59.1ft	62.3ft	65.6ft
6992lx	1748lx	777lx	437lx	280lx	194lx	143lx	109lx	86lx	70lx	58lx	49lx	41lx	36lx	31lx	27lx	24lx	22lx	19lx	17lx
649.5fcd	162.4fcd	72.2fcd	40.6fcd	26fcd	18fcd	13.3fcd	10.1fcd	8fcd	6.5fcd	5.4fcd	4.5fcd	3.8fcd	3.3fcd	2.9fcd	2.5fcd	2.2fcd	2fcd	1.8fcd	1.6fcd

#### Intensities in 0° c-plane

0°	1°	2°	3°	4°	5°	6°	7°	8°	9°	10°	11°	12°	13°	14°	15°	16°	17°	18°	19°
6992	6794	6584	6163	5670	5149	4555	3962	3429	2912	2456	2126	1796	1567	1355	1172	1037	901	792	684
100%	97%	94%	88%	81%	74%	65%	57%	49%	42%	35%	30%	26%	22%	19%	17%	15%	13%	11%	10%

#### Intensities in 90° c-plane

0°	1°	2°	3°	4°	5°	6°	7°	8°	9°	10°	11°	12°	13°	14°	15°	16°	17°	18°	19°
6992	6801	6623	6230	5724	5197	4574	3951	3393	2861	2378	2046	1714	1478	1269	1082	948	815	702	595
100%	97%	95%	89%	82%	74%	65%	57%	49%	41%	34%	29%	25%	21%	18%	15%	14%	12%	10%	9%

#### Intensities in 180° c-plane

0°	1°	2°	3°	4°	5°	6°	7°	8°	9°	10°	11°	12°	13°	14°	15°	16°	17°	18°	19°
6992	6844	6581	6243	5736	5229	4628	4010	3430	2917	2404	2056	1727	1452	1251	1049	918	790	672	563
100%	98%	94%	89%	82%	75%	66%	57%	49%	42%	34%	29%	25%	21%	18%	15%	13%	11%	10%	8%

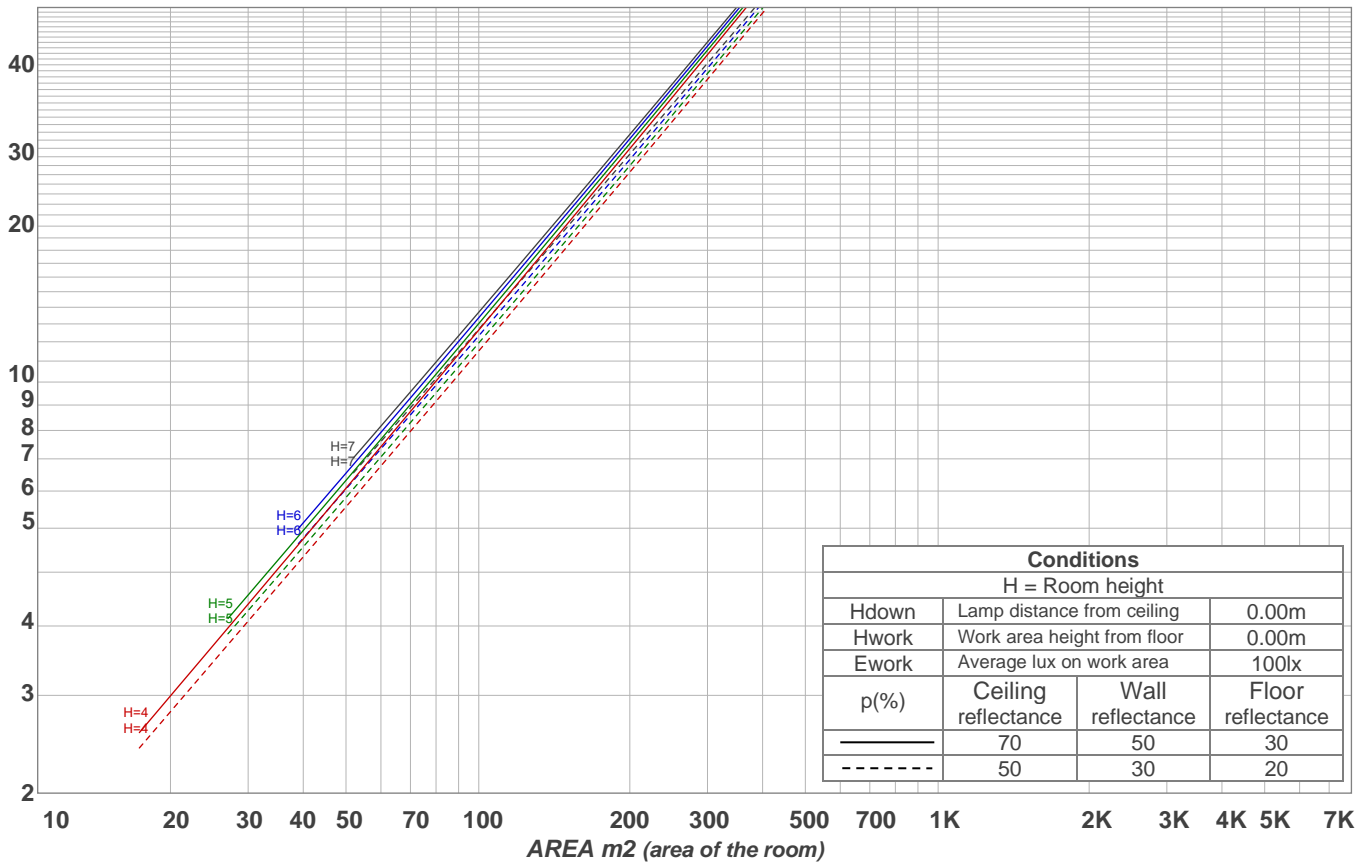
#### Intensities in 270° c-plane

0°	1°	2°	3°	4°	5°	6°	7°	8°	9°	10°	11°	12°	13°	14°	15°	16°	17°	18°	19°
6992	6788	6541	6185	5663	5142	4550	3953	3399	2897	2396	2077	1763	1510	1316	1124	999	873	760	657
100%	97%	94%	88%	81%	74%	65%	57%	49%	41%	34%	30%	25%	22%	19%	16%	14%	12%	11%	9%

Beam angle 50%	Field angle 10%	Cutoff angle 2,5%	Intensity ratio in 120° cone	Intensity ratio in 90° cone
15.6°	36.6°	46.8°	98.7%	98.2%

LAMPS (number of lamps)  
50

### Light planning Luminaire budgetary diagram



### Luminaire budgetary diagram AREA m2 (area of the room) Coefficients of Utilization

Ceiling reflectance	80				70				50			30			10			0			
Wall reflectance	70	50	30	10	70	50	30	10	50	30	10	50	30	10	50	30	10	50	30	10	0
Floor reflectance	20	20	20	20	20	20	20	20	20	20	20	20	20	20	20	20	20	20	20	20	0
RCR	(RCR: Room Cavity Ratio)																				
	Room Values are expressed as percentage of Lumens delivered to the task surface																				
0	119	119	119	119	116	116	116	116	111	111	111	106	106	106	102	102	102	100	100	100	
1	115	113	111	110	113	111	109	108	107	106	105	103	102	102	100	99	99	97	97	97	
2	112	109	106	103	110	107	104	102	104	102	100	101	99	98	98	97	96	95	95	95	
3	109	105	101	99	107	103	100	98	101	98	96	99	97	95	97	95	94	92	92	92	
4	106	101	98	95	105	100	97	95	98	96	94	97	94	92	95	93	92	90	90	90	
5	104	98	95	92	102	98	94	92	96	93	91	95	92	90	93	91	90	89	89	89	
6	101	96	92	90	100	95	92	89	94	91	89	93	90	88	92	89	88	87	87	87	
7	99	94	90	87	98	93	90	87	92	89	87	91	88	86	90	88	86	85	85	85	
8	97	91	88	85	96	91	88	85	90	87	85	89	87	85	89	86	84	84	84	84	
9	95	90	86	84	94	89	86	84	88	85	83	88	85	83	87	85	83	82	82	82	
10	93	88	84	82	93	87	84	82	87	84	82	86	84	82	86	83	81	81	81	81	

### Zonal Lumen Summary

0°-10°	10°-20°	20°-30°	30°-40°	40°-50°	50°-60°	60°-70°	70°-80°	80°-90°
396 lm	322 lm	59.0 lm	3.04 lm	2.27 lm	2.52 lm	2.84 lm	3.68 lm	3.82 lm
90°-100°	100°-110°	110°-120°	120°-130°	130°-140°	140°-150°	150°-160°	160°-170°	170°-180°
0.000 lm	0.000 lm	0.000 lm	0.000 lm	0.000 lm	0.000 lm	0.000 lm	0.000 lm	0.000 lm