

Light efficiency:



Output: 684 lm

Light quality:

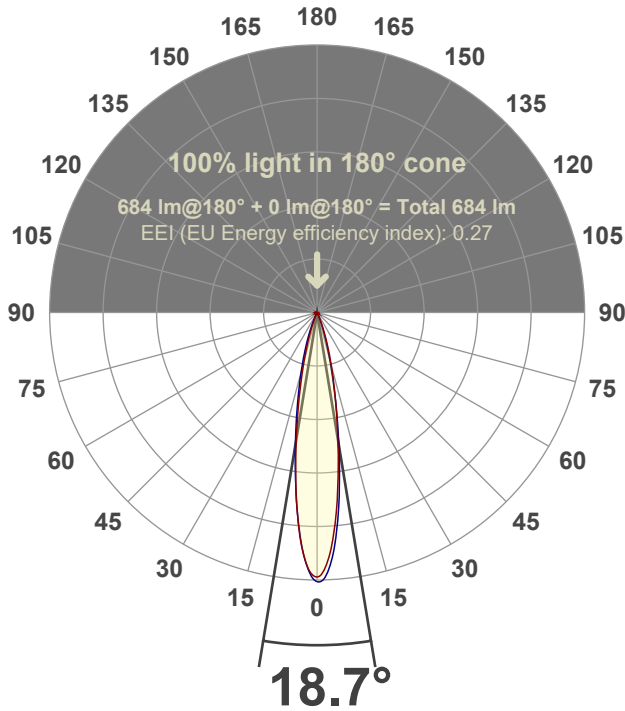


Peak: 4895 cd

Power: 15.1 W



Beam angle



Test number:

GR-F-F-A14-3022-SP-SQ-91A-Rev2

Luminaire Model:

Graffiti Flat Square Fixed Downlight-A14-3022 15° Optic-Solite

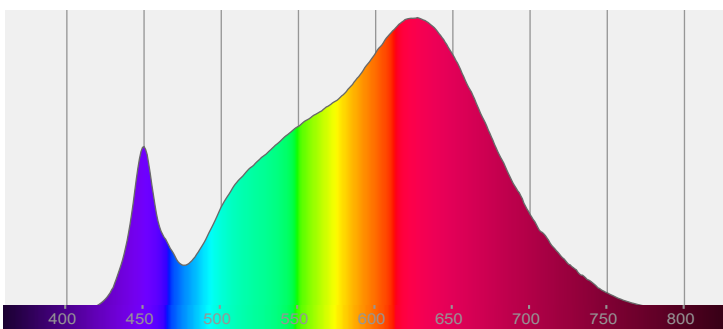
Date and time:

6/30/2022 4:06:57 PM

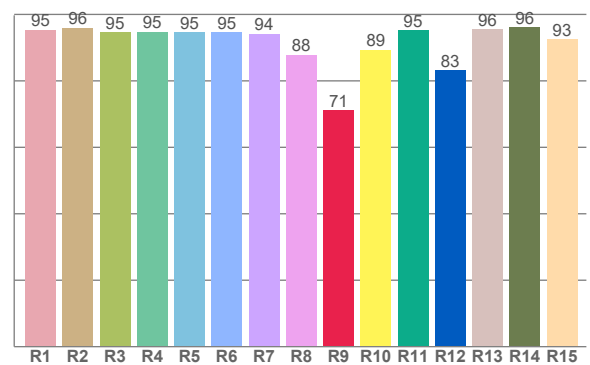
Delivered Lumens

684

Spectra



CRI: 94.0 (R1-R8)



Color parameters

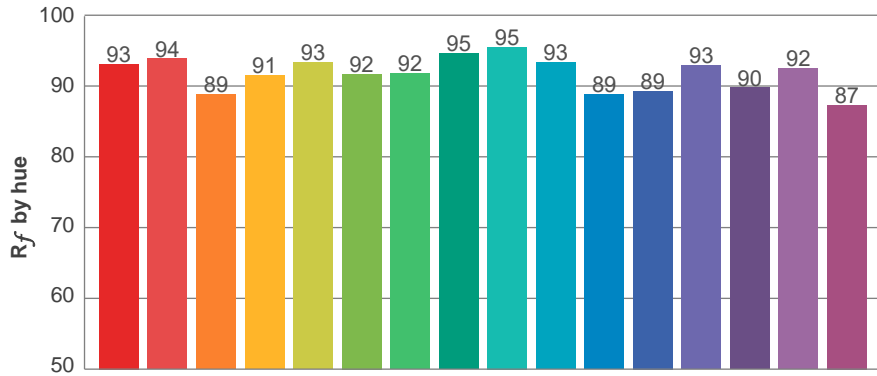
	Color rendering index	Red component	Color fidelity	Color gamut	Color quality scale	Color coordinate cie 1931	Color coordinate cie 1931	Color coordinate	Color coordinate	Color deviation from black body
	CRI	CRI R9	TM30 R _f	TM30 R _g	CQS	x	y	u	v	Δuv
	94.0	71.1	91.8	102.5	91.1	0.437	0.400	0.252	0.347	-0.0015

R_f 91.8
Fidelity index R_f

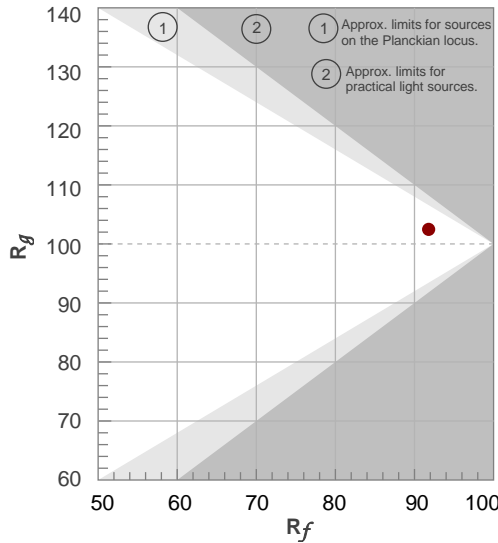
R_g 102.5
Gammut index R_g

TM30: 91.8

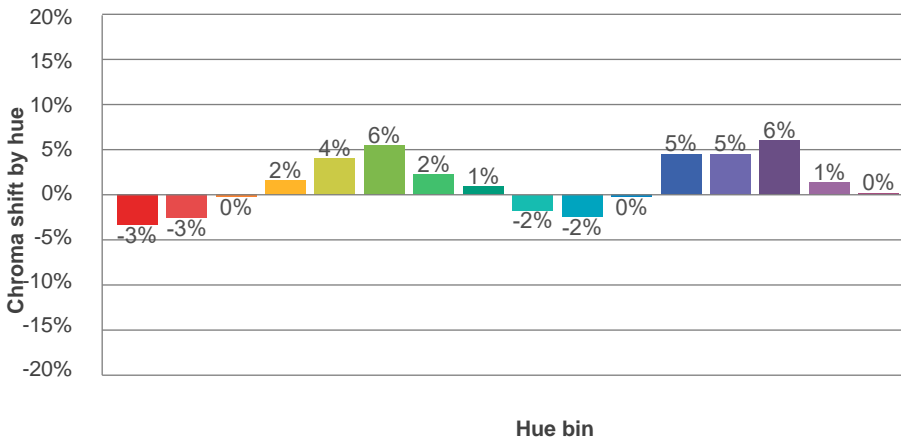
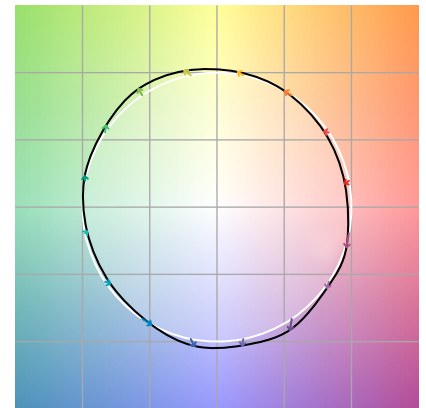
TM-30Color



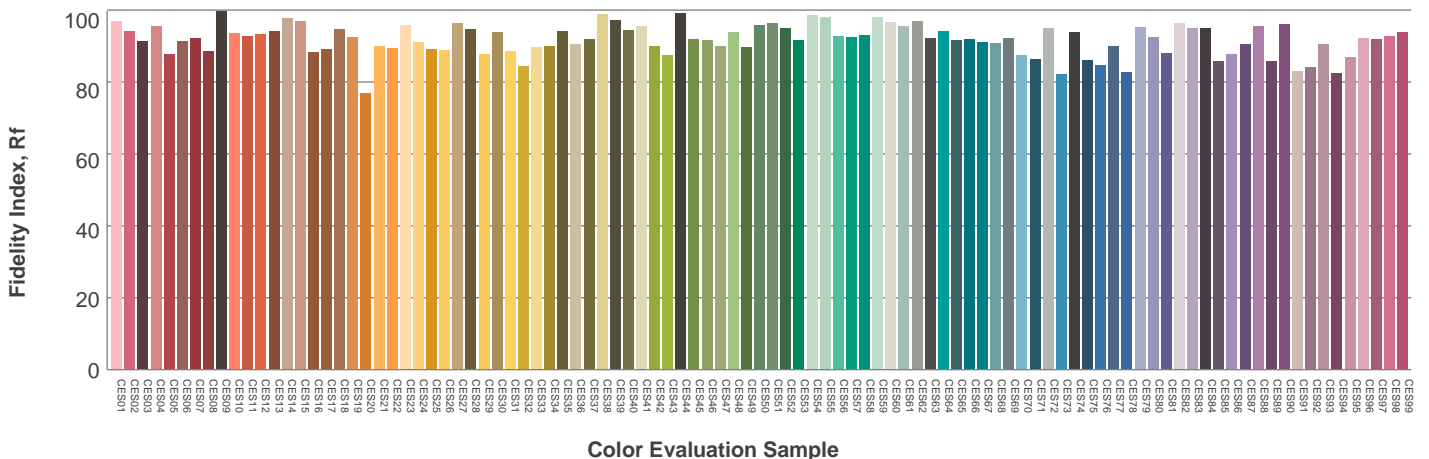
Hue Bin	R_f	Graphic shifts (%)	
		Chroma	Hue
1	93	-3%	-1%
2	94	-3%	2%
3	89	0%	6%
4	91	2%	4%
5	93	4%	4%
6	92	6%	0%
7	92	2%	-5%
8	95	1%	-3%
9	95	-2%	-1%
10	93	-2%	3%
11	89	0%	8%
12	89	5%	4%
13	93	5%	-2%
14	90	6%	-6%
15	92	1%	-4%
16	87	0%	-10%



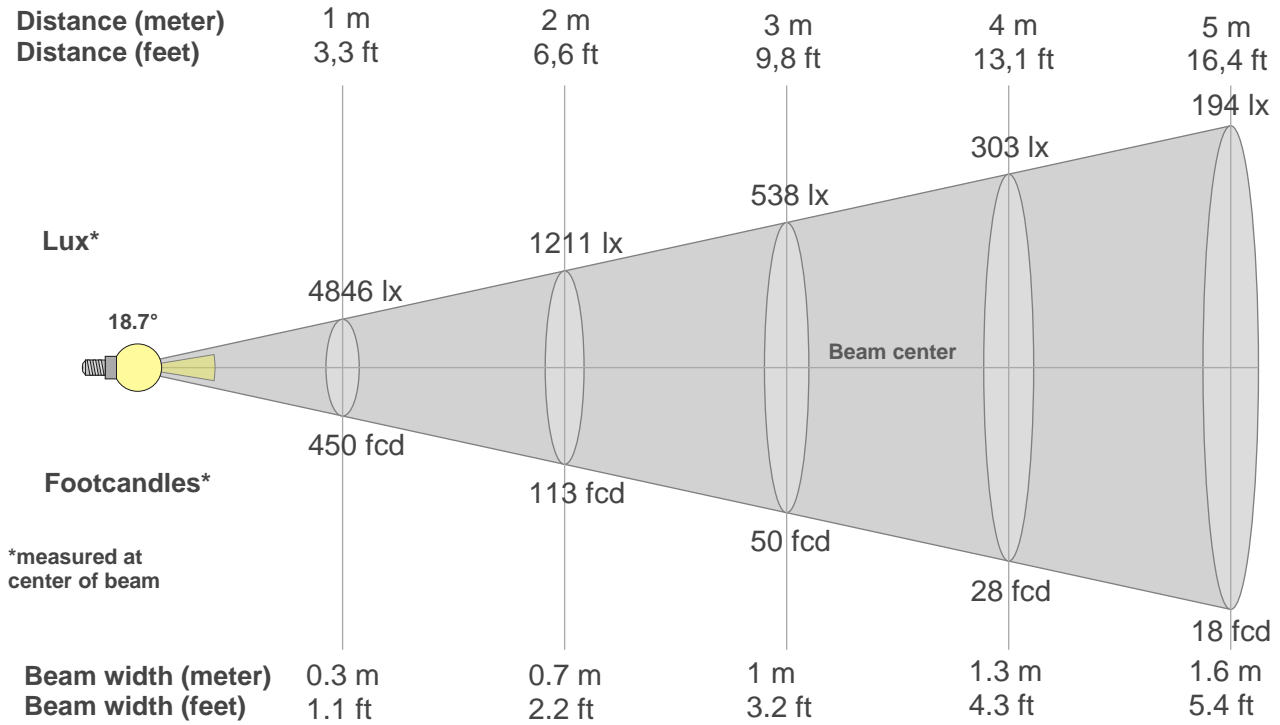
Color vector graphics



Color distortion



Beam details



Beam intensities from 1-20m

1m	2m	3m	4m	5m	6m	7m	8m	9m	10m	11m	12m	13m	14m	15m	16m	17m	18m	19m	20m
3.3ft	6.6ft	9.8ft	13.1ft	16.4ft	19.7ft	23ft	26.2ft	29.5ft	32.8ft	36.1ft	39.4ft	42.7ft	45.9ft	49.2ft	52.5ft	55.8ft	59.1ft	62.3ft	65.6ft
4846lx	1211lx	538lx	303lx	194lx	135lx	99lx	76lx	60lx	48lx	40lx	34lx	29lx	25lx	22lx	19lx	17lx	15lx	13lx	12lx
450.2fcd	112.6fcd	50fcd	28.1fcd	18fcd	12.5fcd	9.2fcd	7fcd	5.6fcd	4.5fcd	3.7fcd	3.1fcd	2.7fcd	2.3fcd	2fcd	1.8fcd	1.6fcd	1.4fcd	1.2fcd	1.1fcd

Intensities in 0° c-plane

0°	1°	2°	3°	4°	5°	6°	7°	8°	9°	10°	11°	12°	13°	14°	15°	16°	17°	18°	19°
4846	4777	4607	4436	4143	3837	3507	3153	2803	2483	2163	1890	1639	1403	1213	1022	873	730	603	496
100%	99%	95%	92%	85%	79%	72%	65%	58%	51%	45%	39%	34%	29%	25%	21%	18%	15%	12%	10%

Intensities in 90° c-plane

0°	1°	2°	3°	4°	5°	6°	7°	8°	9°	10°	11°	12°	13°	14°	15°	16°	17°	18°	19°
4846	4892	4789	4593	4380	4047	3713	3348	2971	2605	2261	1918	1637	1365	1130	934	743	610	476	375
100%	101%	99%	95%	90%	84%	77%	69%	61%	54%	47%	40%	34%	28%	23%	19%	15%	13%	10%	8%

Intensities in 180° c-plane

0°	1°	2°	3°	4°	5°	6°	7°	8°	9°	10°	11°	12°	13°	14°	15°	16°	17°	18°	19°
4846	4769	4682	4458	4234	3905	3559	3205	2842	2481	2171	1862	1595	1355	1129	953	776	640	514	404
100%	98%	97%	92%	87%	81%	73%	66%	59%	51%	45%	38%	33%	28%	23%	20%	16%	13%	11%	8%

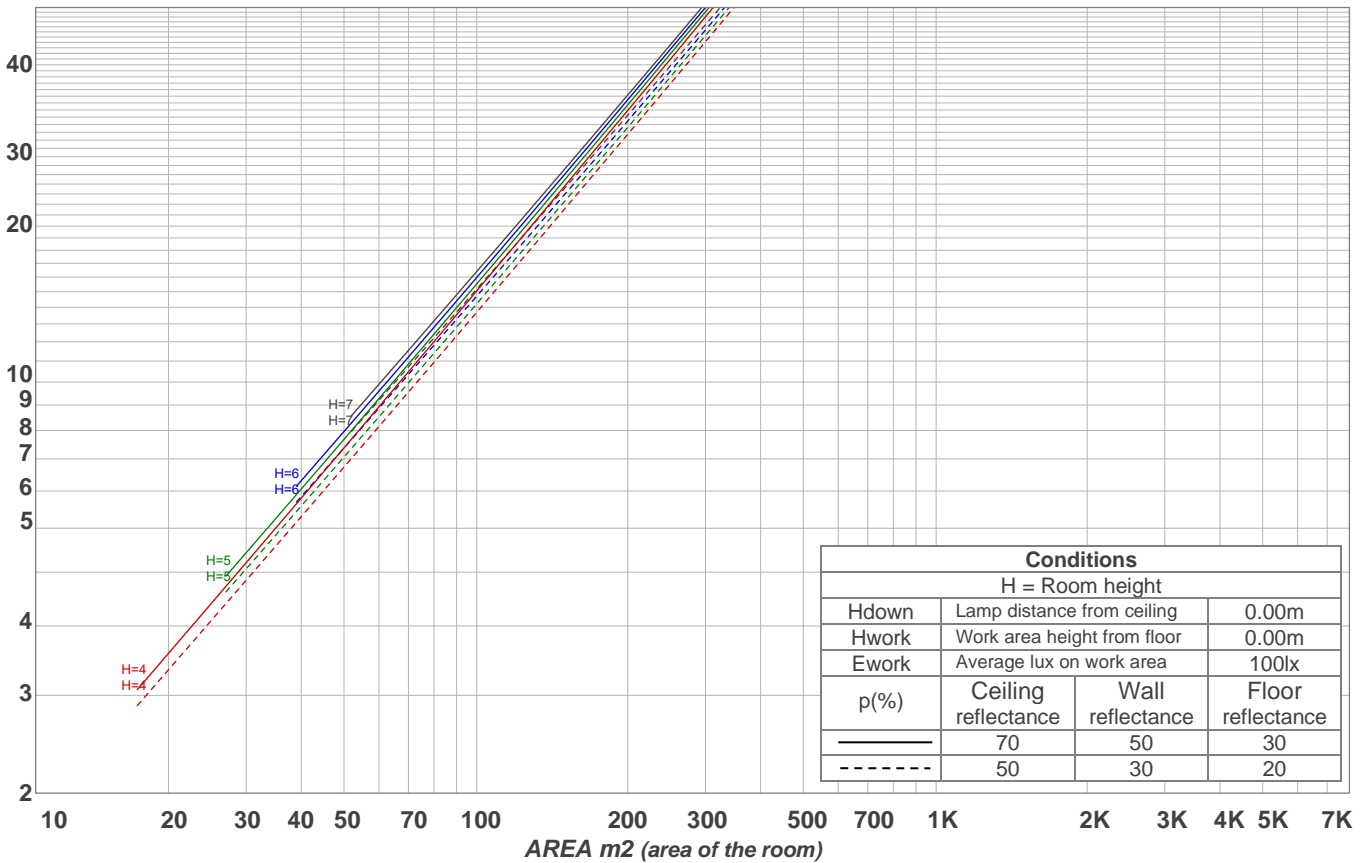
Intensities in 270° c-plane

0°	1°	2°	3°	4°	5°	6°	7°	8°	9°	10°	11°	12°	13°	14°	15°	16°	17°	18°	19°
4846	4870	4673	4476	4205	3892	3573	3232	2891	2584	2285	2009	1768	1528	1340	1153	991	847	709	600
100%	100%	96%	92%	87%	80%	74%	67%	60%	53%	47%	41%	36%	32%	28%	24%	20%	17%	15%	12%

Beam angle 50%	Field angle 10%	Cutoff angle 2,5%	Intensity ratio in 120° cone	Intensity ratio in 90° cone
18.7°	37.6°	48.3°	98.5%	97.8%

LAMPS (number of lamps)
50

Light planning Luminaire budgetary diagram



Luminaire budgetary diagram AREA m2 (area of the room) Coefficients of Utilization

Ceiling reflectance	80				70				50			30			10			0			
Wall reflectance	70	50	30	10	70	50	30	10	50	30	10	50	30	10	50	30	10	50	30	10	0
Floor reflectance	20	20	20	20	20	20	20	20	20	20	20	20	20	20	20	20	20	20	20	20	0
RCR	(RCR: Room Cavity Ratio)																				
	Room Values are expressed as percentage of Lumens delivered to the task surface																				
0	119	119	119	119	116	116	116	116	111	111	111	106	106	106	102	102	102	100	100		
1	115	113	111	109	113	111	109	108	107	106	104	103	102	101	100	99	98	98	97		
2	112	108	105	103	110	106	104	102	103	101	99	100	99	97	98	97	95	94	94		
3	108	104	101	98	107	103	100	97	100	98	96	98	96	94	96	94	93	92	92		
4	106	101	97	94	104	99	96	93	98	95	92	96	93	91	94	92	90	89	89		
5	103	97	94	91	102	97	93	90	95	92	90	94	91	89	92	90	88	87	87		
6	100	95	91	88	99	94	90	88	93	90	87	92	89	87	90	88	86	85	85		
7	98	92	88	86	97	92	88	86	91	88	85	90	87	85	89	86	84	84	84		
8	96	90	86	84	95	90	86	84	89	86	83	88	85	83	87	85	83	82	82		
9	94	88	84	82	93	88	84	82	87	84	82	86	83	81	85	83	81	80	80		
10	92	86	83	80	91	86	82	80	85	82	80	85	82	80	84	81	80	79	79		

Zonal Lumen Summary

0°-10°	10°-20°	20°-30°	30°-40°	40°-50°	50°-60°	60°-70°	70°-80°	80°-90°
318 lm	284 lm	56.7 lm	8.50 lm	3.58 lm	2.80 lm	3.25 lm	3.58 lm	3.65 lm
90°-100°	100°-110°	110°-120°	120°-130°	130°-140°	140°-150°	150°-160°	160°-170°	170°-180°
0.000 lm	0.000 lm	0.000 lm	0.000 lm	0.000 lm	0.000 lm	0.000 lm	0.000 lm	0.000 lm