

Light efficiency:



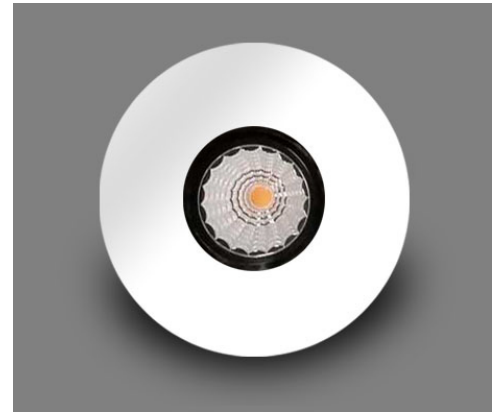
Output: 1116 lm

Light quality:

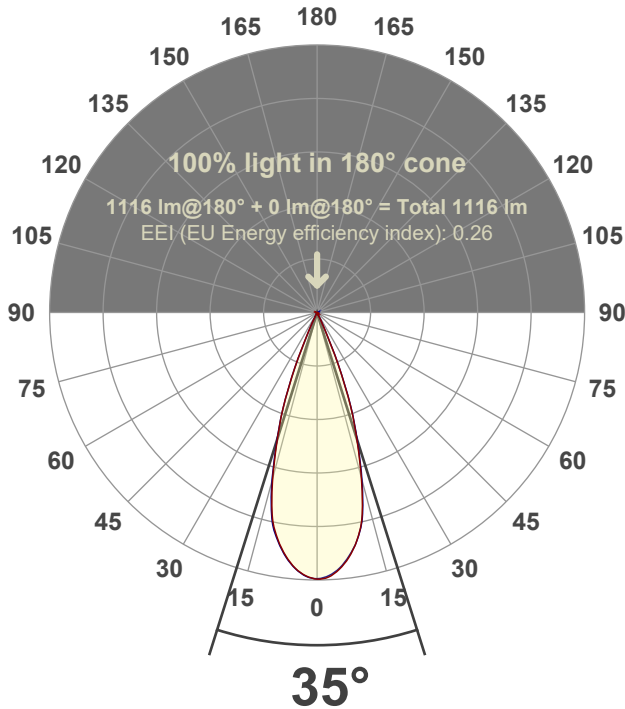


Peak: 3573 cd

Power: 21.3 W



Beam angle



Test number:

GR-F-F-A20-3019-FL-RD-Rev2

Luminaire Model:

Graffiti Flat Round Fixed Downlight-A20-3019 38° Optic

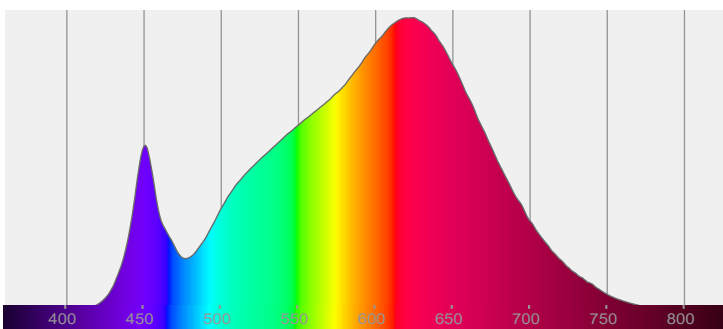
Date and time:

4/28/2022 8:10:52 PM

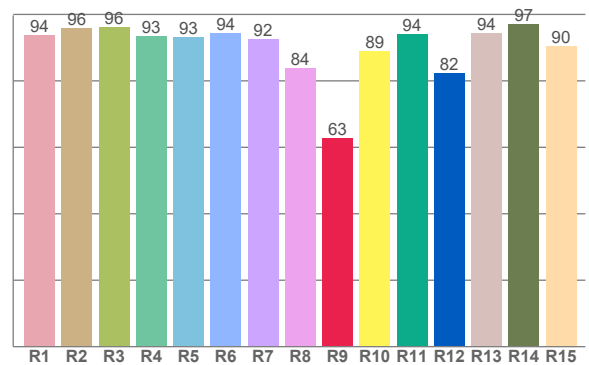
Delivered Lumens

1116

Spectra



CRI: 92.8 (R1-R8)



Color parameters

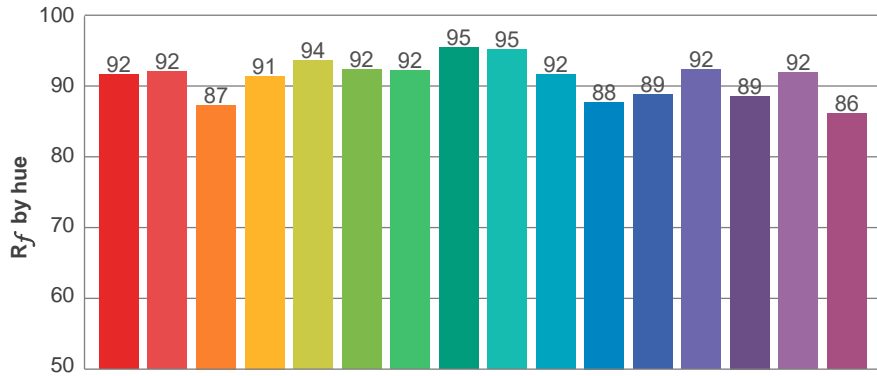
	Color rendering index	Red component	Color fidelity	Color gamut	Color quality scale	Color coordinate cie 1931	Color coordinate cie 1931	Color coordinate	Color coordinate	Color deviation from black body
	CRI	CRI R9	TM30 R _f	TM30 R _g	CQS	x	y	u	v	Δuv
	92.8	62.8	91.1	101.5	90.0	0.435	0.398	0.252	0.346	-0.0020

R_f 91.1
Fidelity index R_f

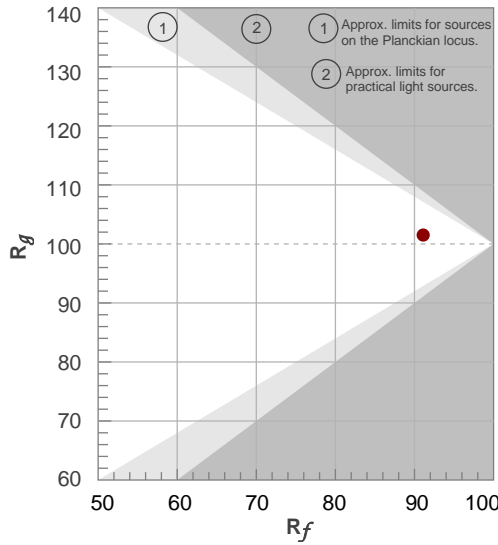
R_g 101.5
Gammut index R_g

TM30: 91.1

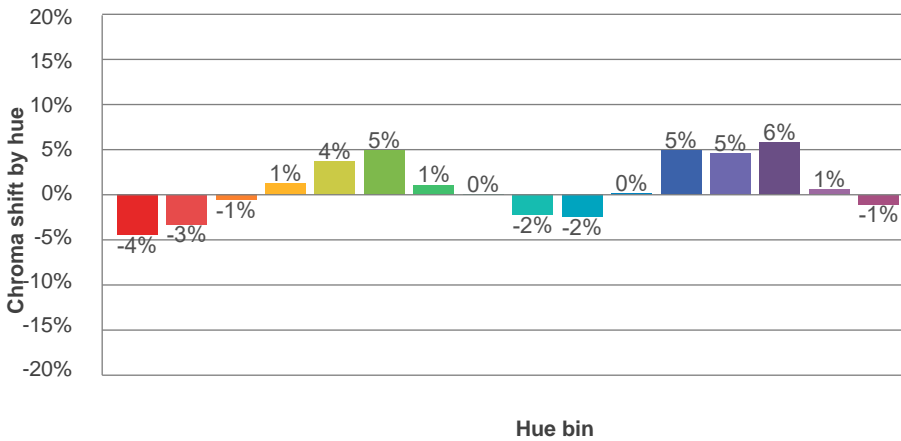
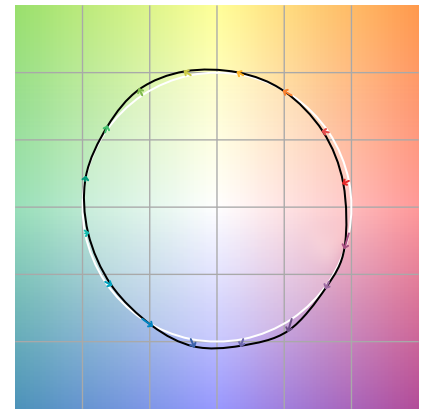
TM-30Color



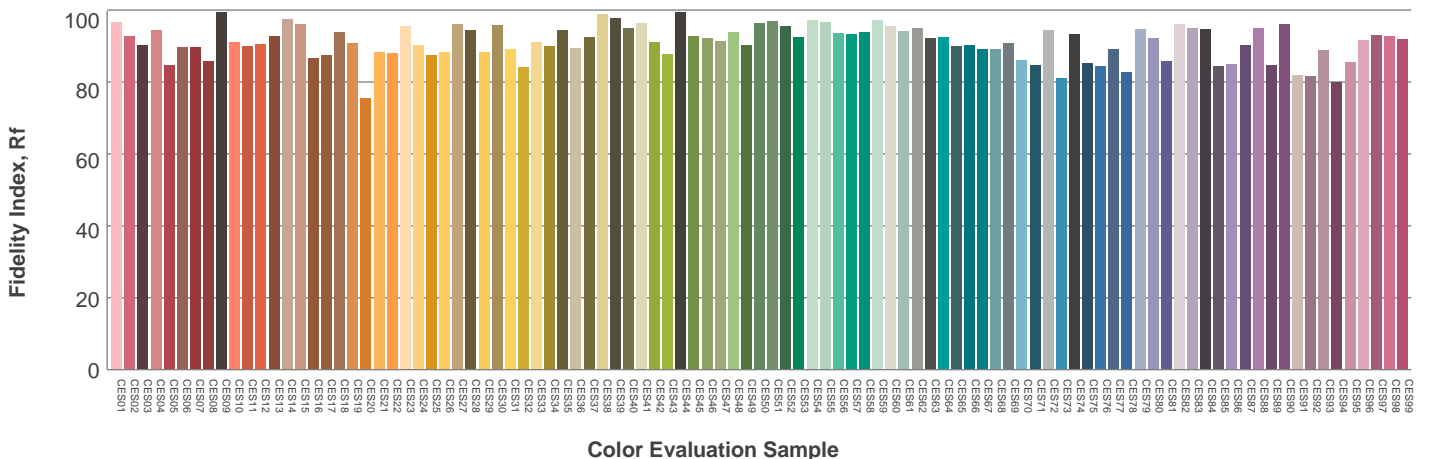
Hue Bin	R_f	Graphic shifts (%)	
		Chroma	Hue
1	92	-4%	-1%
2	92	-3%	3%
3	87	-1%	7%
4	91	1%	4%
5	94	4%	4%
6	92	5%	-1%
7	92	1%	-4%
8	95	0%	-3%
9	95	-2%	0%
10	92	-2%	4%
11	88	0%	9%
12	89	5%	3%
13	92	5%	-3%
14	89	6%	-7%
15	92	1%	-5%
16	86	-1%	-11%



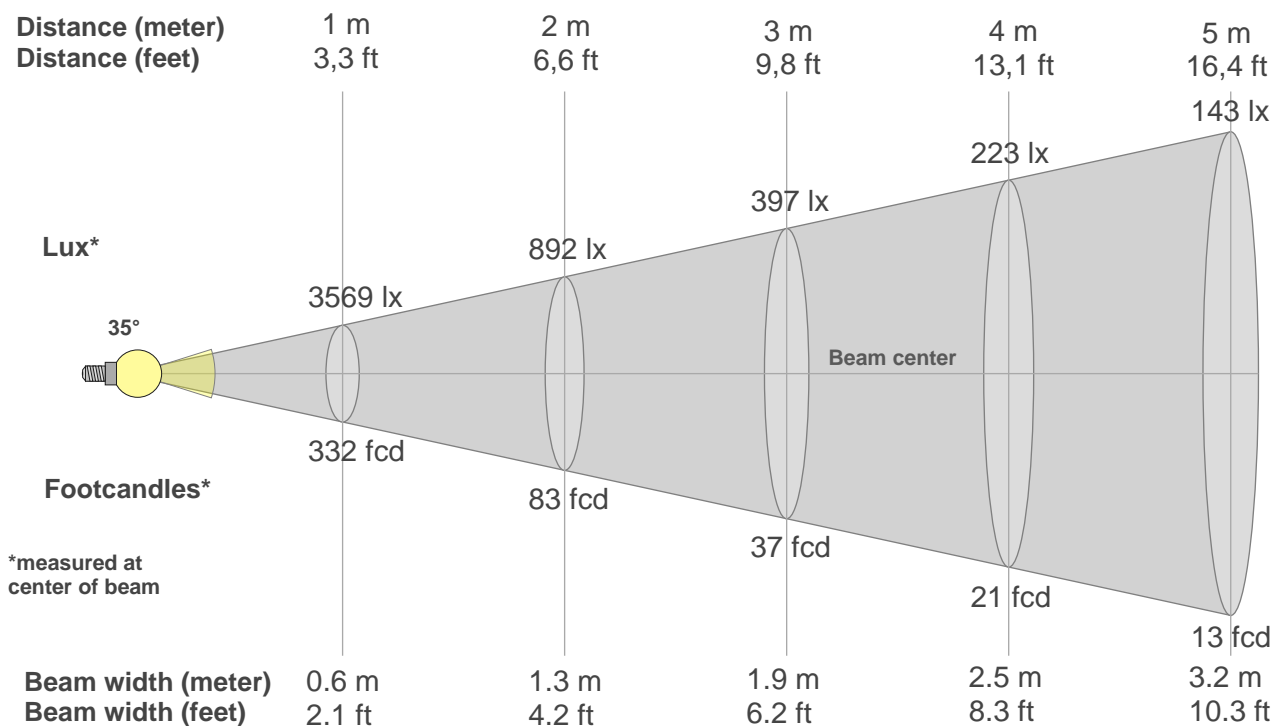
Color vector graphics



Color distortion



Beam details



Beam intensities from 1-20m

1m	2m	3m	4m	5m	6m	7m	8m	9m	10m	11m	12m	13m	14m	15m	16m	17m	18m	19m	20m
3.3ft	6.6ft	9.8ft	13.1ft	16.4ft	19.7ft	23ft	26.2ft	29.5ft	32.8ft	36.1ft	39.4ft	42.7ft	45.9ft	49.2ft	52.5ft	55.8ft	59.1ft	62.3ft	65.6ft
3569lx	892lx	397lx	223lx	143lx	99lx	73lx	56lx	44lx	36lx	29lx	25lx	21lx	18lx	16lx	14lx	12lx	11lx	10lx	9lx
331.6fcd	82.9fcd	36.8fcd	20.7fcd	13.3fcd	9.2fcd	6.8fcd	5.2fcd	4.1fcd	3.3fcd	2.7fcd	2.3fcd	2fcd	1.7fcd	1.5fcd	1.3fcd	1.1fcd	1fcd	0.9fcd	0.8fcd

Intensities in 0° c-plane

0°	2°	4°	6°	8°	10°	12°	14°	16°	18°	20°	22°	24°	26°	28°	30°	32°	34°	36°	38°
3569	3554	3491	3393	3261	3091	2859	2497	2089	1678	1274	807	395	144	36	14	8	6	6	5
100%	100%	98%	95%	91%	87%	80%	70%	59%	47%	36%	23%	11%	4%	1%	0%	0%	0%	0%	0%

Intensities in 90° c-plane

0°	2°	4°	6°	8°	10°	12°	14°	16°	18°	20°	22°	24°	26°	28°	30°	32°	34°	36°	38°
3569	3538	3476	3380	3251	3096	2867	2522	2117	1696	1291	819	397	153	53	18	10	7	5	4
100%	99%	97%	95%	91%	87%	80%	71%	59%	48%	36%	23%	11%	4%	1%	1%	0%	0%	0%	0%

Intensities in 180° c-plane

0°	2°	4°	6°	8°	10°	12°	14°	16°	18°	20°	22°	24°	26°	28°	30°	32°	34°	36°	38°
3569	3539	3473	3371	3236	3068	2849	2499	2092	1681	1286	825	423	174	57	24	13	10	8	6
100%	99%	97%	94%	91%	86%	80%	70%	59%	47%	36%	23%	12%	5%	2%	1%	0%	0%	0%	0%

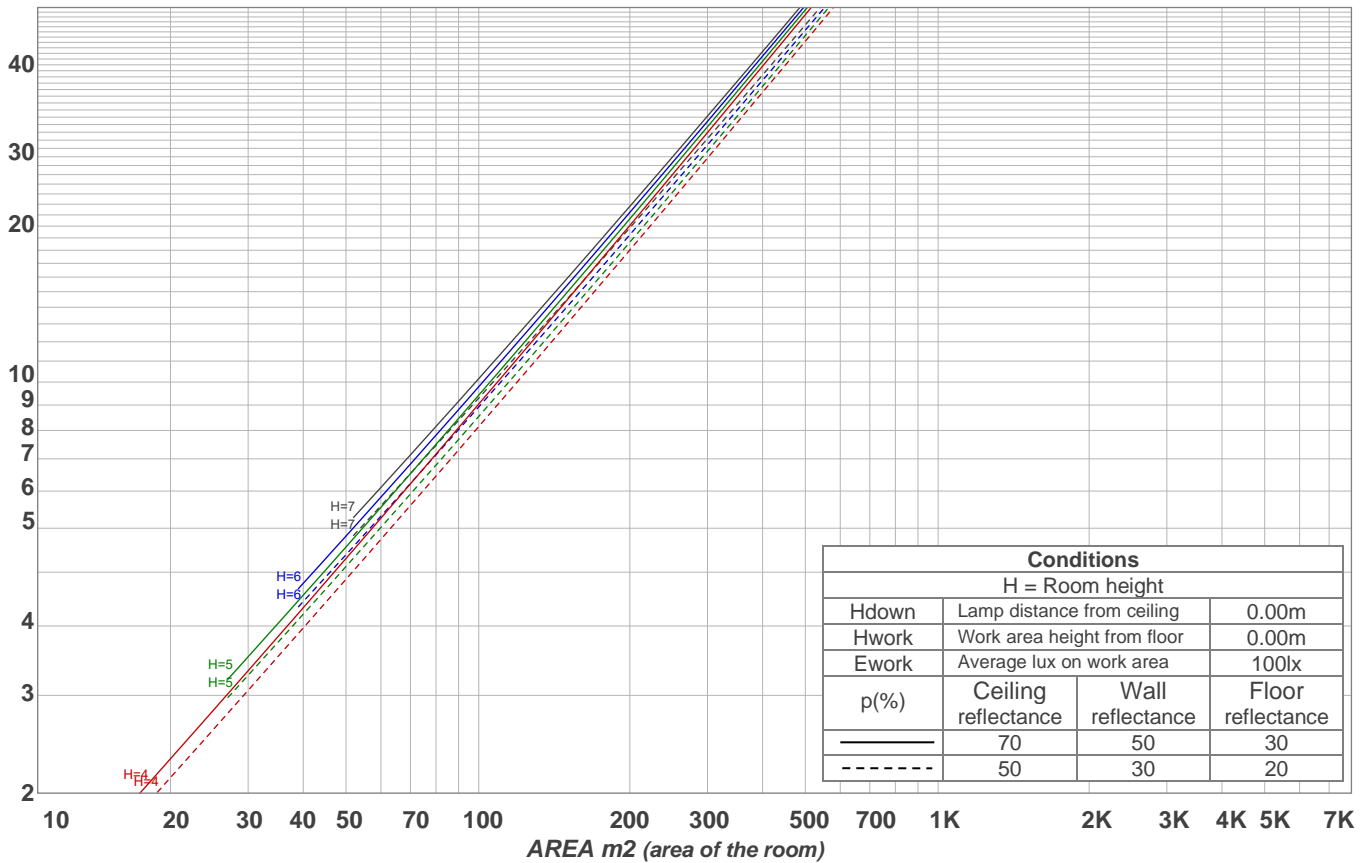
Intensities in 270° c-plane

0°	2°	4°	6°	8°	10°	12°	14°	16°	18°	20°	22°	24°	26°	28°	30°	32°	34°	36°	38°
3569	3544	3478	3378	3246	3082	2880	2536	2122	1695	1276	818	374	142	46	19	11	8	7	5
100%	99%	97%	95%	91%	86%	81%	71%	59%	47%	36%	23%	10%	4%	1%	1%	0%	0%	0%	0%

Beam angle 50%	Field angle 10%	Cutoff angle 2,5%	Intensity ratio in 120° cone	Intensity ratio in 90° cone
35°	48.4°	53.6°	99.2%	99.0%

LAMPS (number of lamps)
50

Light planning Luminaire budgetary diagram



Luminaire budgetary diagram AREA m2 (area of the room) Coefficients of Utilization

Ceiling reflectance	80				70				50			30			10			0			
Wall reflectance	70	50	30	10	70	50	30	10	50	30	10	50	30	10	50	30	10	50	30	10	0
Floor reflectance	20	20	20	20	20	20	20	20	20	20	20	20	20	20	20	20	20	20	20	20	0
RCR	(RCR: Room Cavity Ratio)																				
	Room Values are expressed as percentage of Lumens delivered to the task surface																				
0	119	119	119	119	116	116	116	116	111	111	111	106	106	106	102	102	102	100	100	100	
1	115	113	111	109	112	111	109	107	107	105	104	103	102	101	99	99	98	96	96	96	
2	111	107	104	102	109	106	103	101	103	100	98	100	98	96	97	96	94	93	93	93	
3	107	103	99	96	106	101	98	95	99	96	94	97	94	92	95	93	91	90	90	90	
4	104	99	95	92	103	98	94	91	96	93	90	94	91	89	92	90	88	87	87	87	
5	101	95	91	88	100	94	90	87	93	89	87	91	88	86	90	87	85	84	84	84	
6	98	92	88	84	97	91	87	84	90	86	84	88	85	83	87	85	83	82	82	82	
7	95	89	84	82	94	88	84	81	87	84	81	86	83	81	85	82	80	79	79	79	
8	93	86	82	79	92	85	81	79	84	81	78	84	80	78	83	80	78	77	77	77	
9	90	83	79	76	89	83	79	76	82	79	76	81	78	76	81	78	76	75	75	75	
10	88	81	77	74	87	80	77	74	80	76	74	79	76	74	79	76	74	73	73	73	

Zonal Lumen Summary

0°-10°	10°-20°	20°-30°	30°-40°	40°-50°	50°-60°	60°-70°	70°-80°	80°-90°
317 lm	615 lm	167 lm	4.88 lm	1.81 lm	1.80 lm	2.02 lm	3.19 lm	3.41 lm
90°-100°	100°-110°	110°-120°	120°-130°	130°-140°	140°-150°	150°-160°	160°-170°	170°-180°
0.000 lm	0.000 lm	0.000 lm	0.000 lm	0.000 lm	0.000 lm	0.000 lm	0.000 lm	0.000 lm