

Light efficiency:



Output: 967 lm

Light quality:

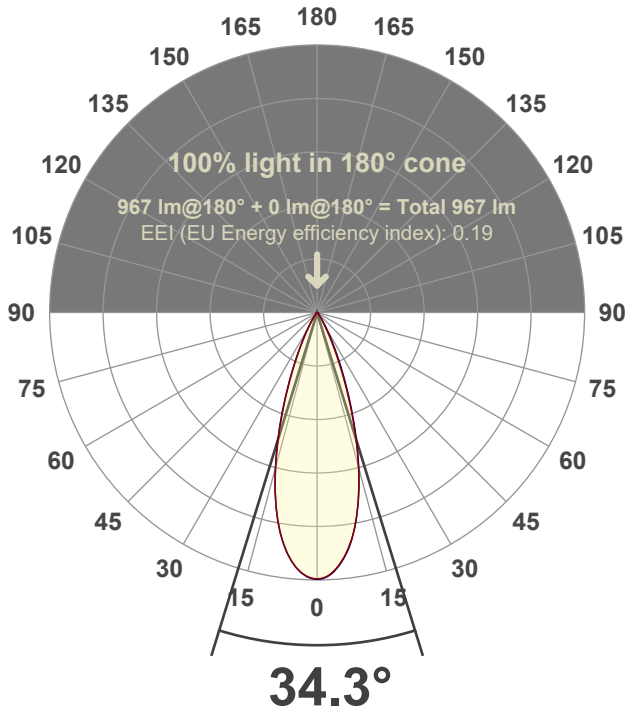


Peak: 2606 cd

Power: 14.2 W



Beam angle



Test number:

GR-F-F-CZ14-30k-FL-RD-91A-Rev2

Luminaire Model:

Graffiti Flat Round Fixed Downlight-CZ14 30k 38° Optic-Solite

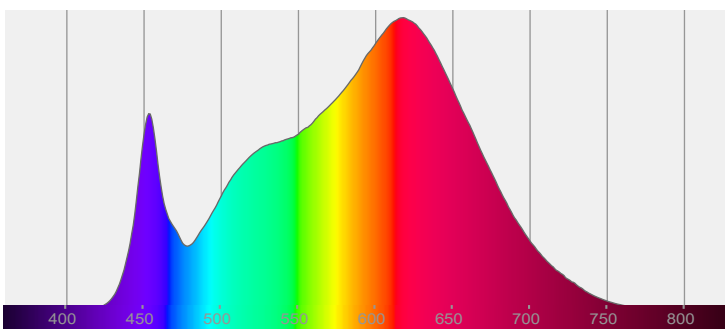
Date and time:

3/9/2022 2:45:44 PM

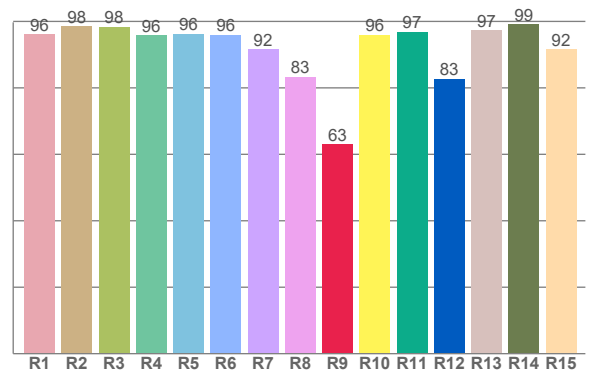
Delivered Lumens

967

Spectra



CRI: 94.5 (R1-R8)



Color parameters

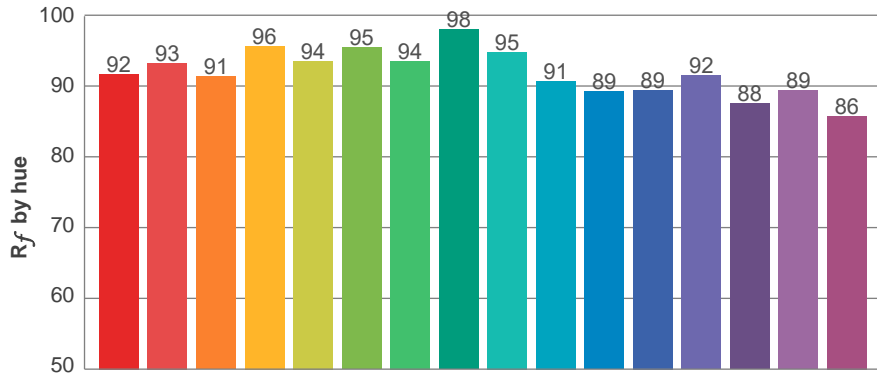
	Color rendering index	Red component	Color fidelity	Color gamut	Color quality scale	Color coordinate cie 1931	Color coordinate cie 1931	Color coordinate	Color coordinate	Color deviation from black body
	CRI	CRI R9	TM30 R _f	TM30 R _g	CQS	x	y	u	v	Δuv
	94.5	63.0	92.1	100.4	91.8	0.425	0.393	0.247	0.344	-0.0025

R_f 92.1
Fidelity index R_f

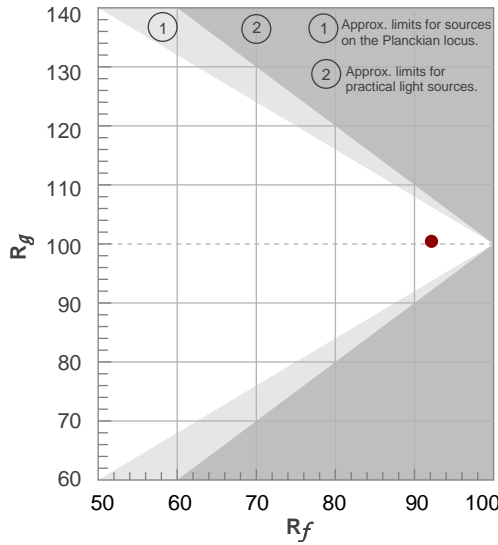
R_g 100.4
Gammut index R_g

TM30: 92.1

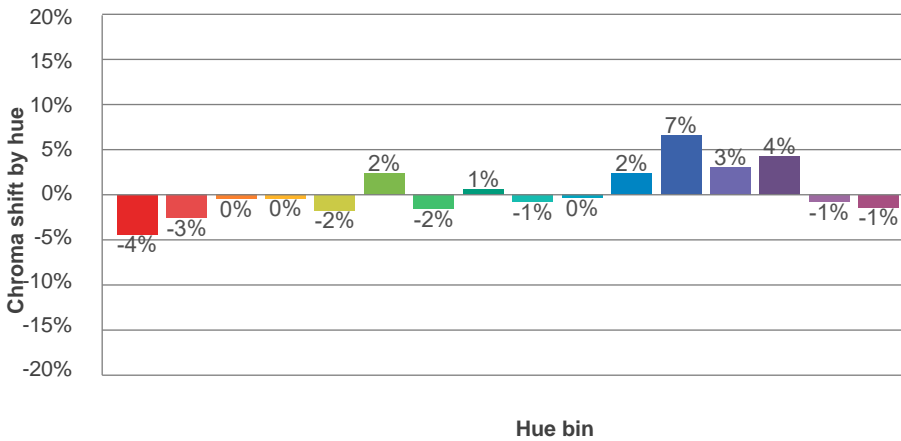
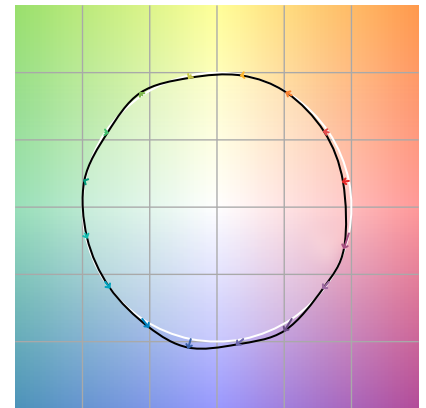
TM-30Color



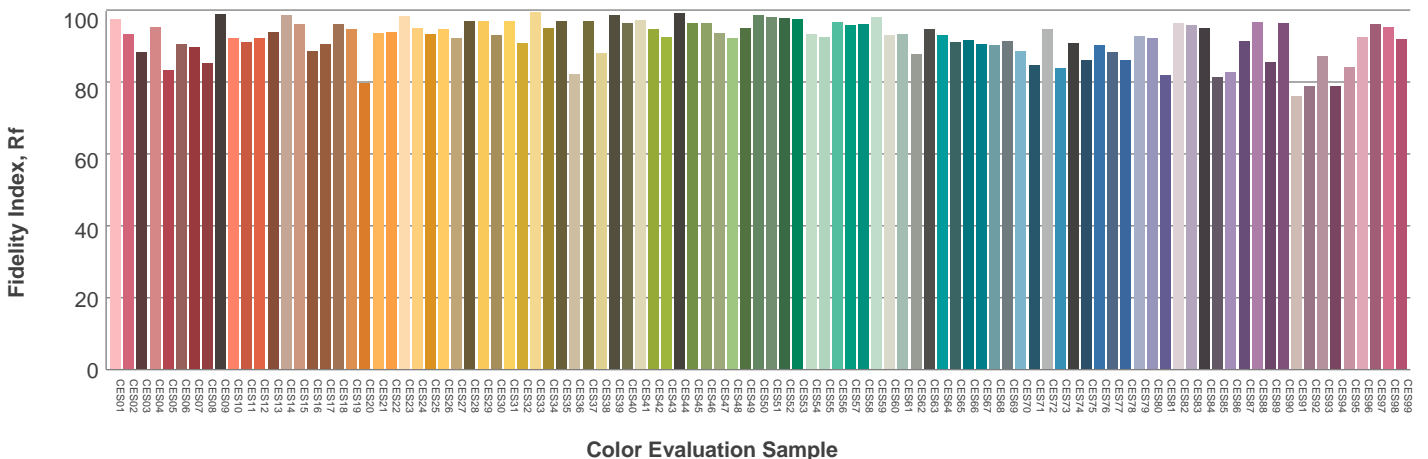
Hue Bin	R_f	Graphic shifts (%)	
		Chroma	Hue
1	92	-4%	0%
2	93	-3%	2%
3	91	0%	4%
4	96	0%	1%
5	94	-2%	2%
6	95	2%	0%
7	94	-2%	-1%
8	98	1%	0%
9	95	-1%	3%
10	91	0%	5%
11	89	2%	7%
12	89	7%	-1%
13	92	3%	-5%
14	88	4%	-9%
15	89	-1%	-6%
16	86	-1%	-11%



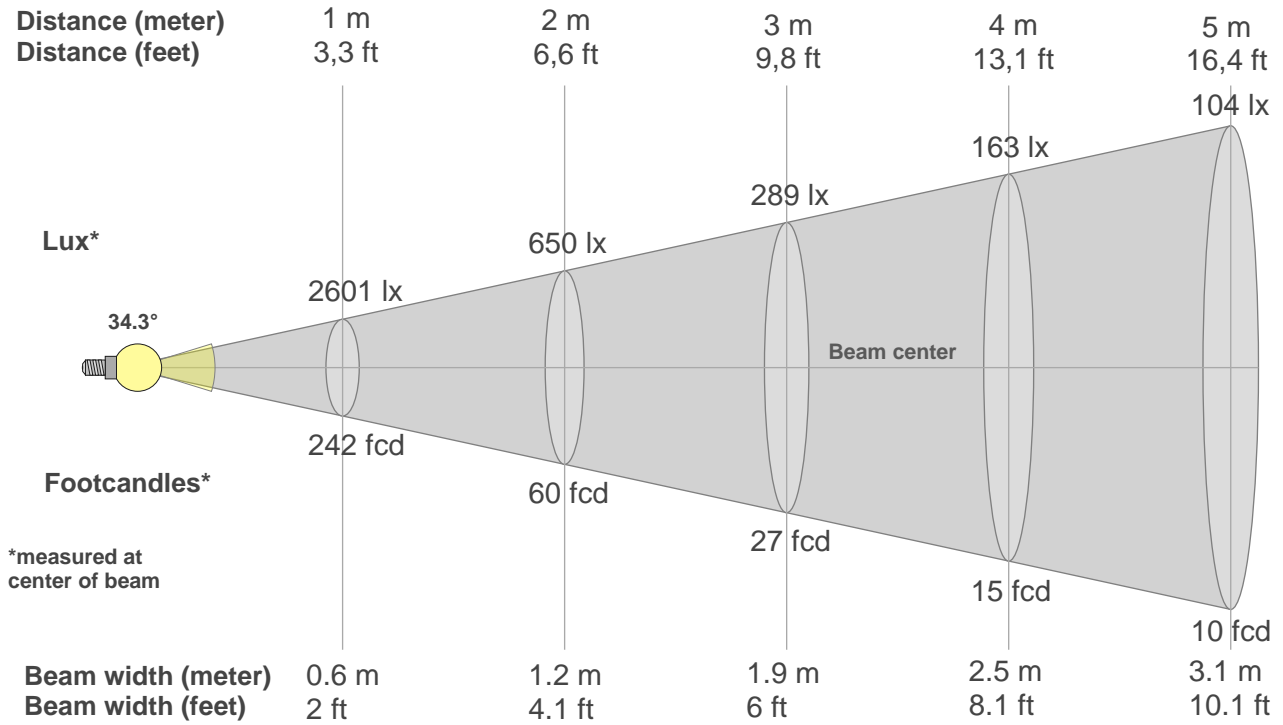
Color vector graphics



Color distortion



Beam details



Beam intensities from 1-20m

1m	2m	3m	4m	5m	6m	7m	8m	9m	10m	11m	12m	13m	14m	15m	16m	17m	18m	19m	20m
3.3ft	6.6ft	9.8ft	13.1ft	16.4ft	19.7ft	23ft	26.2ft	29.5ft	32.8ft	36.1ft	39.4ft	42.7ft	45.9ft	49.2ft	52.5ft	55.8ft	59.1ft	62.3ft	65.6ft
2601lx	650lx	289lx	163lx	104lx	72lx	53lx	41lx	32lx	26lx	21lx	18lx	15lx	13lx	12lx	10lx	9lx	8lx	7lx	7lx
241.6fcd	60.4fcd	26.8fcd	15.1fcd	9.7fcd	6.7fcd	4.9fcd	3.8fcd	3fcd	2.4fcd	2fcd	1.7fcd	1.4fcd	1.2fcd	1.1fcd	0.9fcd	0.8fcd	0.7fcd	0.7fcd	0.6fcd

Intensities in 0° c-plane

0°	2°	4°	6°	8°	10°	12°	14°	16°	18°	20°	22°	24°	26°	28°	30°	32°	34°	36°	38°
2601	2582	2515	2416	2285	2121	1921	1690	1440	1183	933	704	510	362	251	173	120	85	61	45
100%	99%	97%	93%	88%	82%	74%	65%	55%	45%	36%	27%	20%	14%	10%	7%	5%	3%	2%	2%

Intensities in 90° c-plane

0°	2°	4°	6°	8°	10°	12°	14°	16°	18°	20°	22°	24°	26°	28°	30°	32°	34°	36°	38°
2601	2580	2521	2425	2300	2125	1920	1694	1452	1203	963	749	568	419	300	211	152	109	79	58
100%	99%	97%	93%	88%	82%	74%	65%	56%	46%	37%	29%	22%	16%	12%	8%	6%	4%	3%	2%

Intensities in 180° c-plane

0°	2°	4°	6°	8°	10°	12°	14°	16°	18°	20°	22°	24°	26°	28°	30°	32°	34°	36°	38°
2601	2578	2522	2430	2304	2140	1930	1695	1443	1186	938	718	534	385	271	188	130	94	69	51
100%	99%	97%	93%	89%	82%	74%	65%	55%	46%	36%	28%	21%	15%	10%	7%	5%	4%	3%	2%

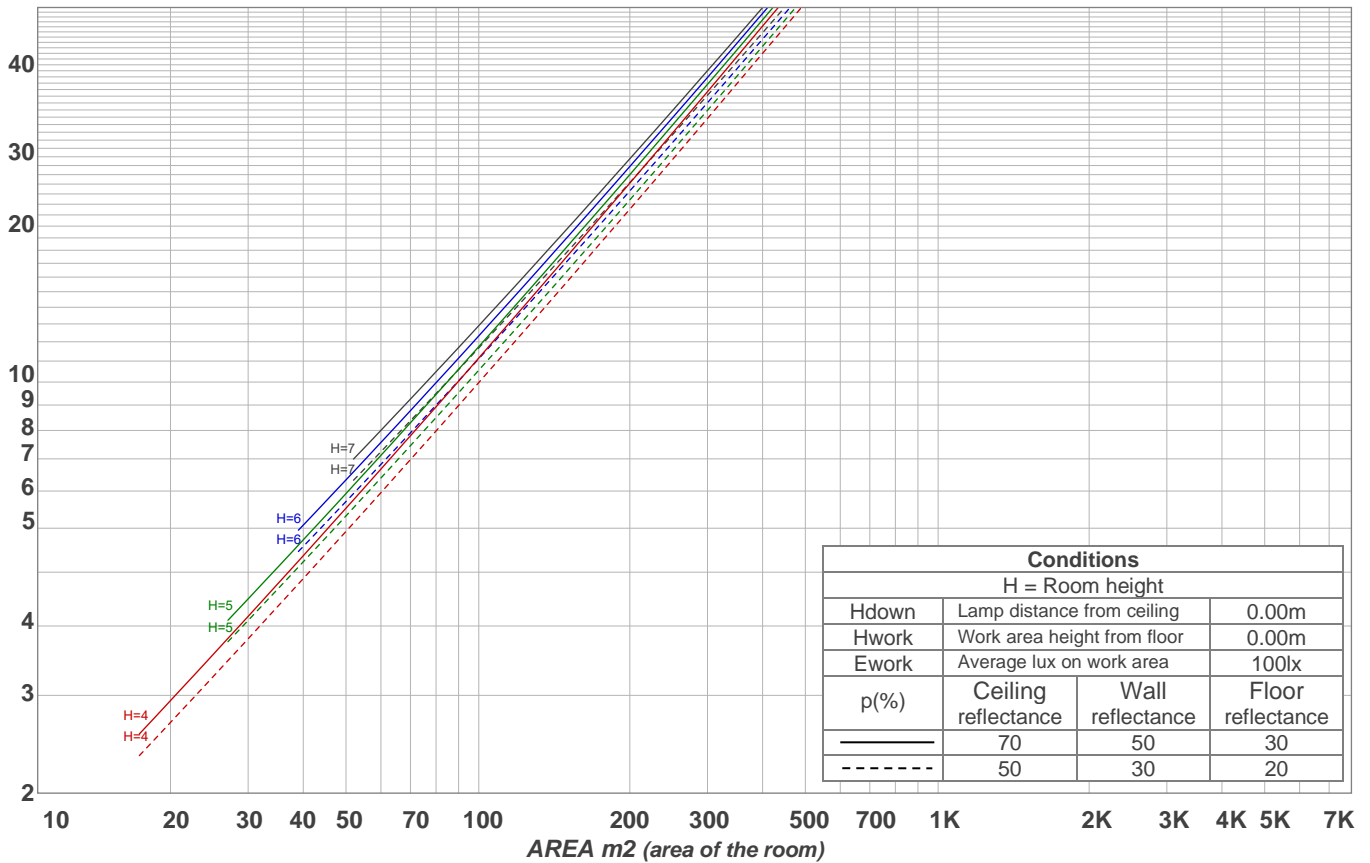
Intensities in 270° c-plane

0°	2°	4°	6°	8°	10°	12°	14°	16°	18°	20°	22°	24°	26°	28°	30°	32°	34°	36°	38°
2601	2585	2529	2430	2296	2130	1931	1704	1453	1202	960	739	549	397	284	202	143	103	74	55
100%	99%	97%	93%	88%	82%	74%	66%	56%	46%	37%	28%	21%	15%	11%	8%	5%	4%	3%	2%

Beam angle 50%	Field angle 10%	Cutoff angle 2,5%	Intensity ratio in 120° cone	Intensity ratio in 90° cone
34.3°	56.7°	73°	98.2%	96.7%

LAMPS (number of lamps)
50

Light planning Luminaire budgetary diagram



Luminaire budgetary diagram AREA m2 (area of the room) Coefficients of Utilization

Ceiling reflectance	80				70				50			30			10			0			
Wall reflectance	70	50	30	10	70	50	30	10	50	30	10	50	30	10	50	30	10	50	30	10	0
Floor reflectance	20	20	20	20	20	20	20	20	20	20	20	20	20	20	20	20	20	20	20	20	0
RCR	(RCR: Room Cavity Ratio)																				
	Room Values are expressed as percentage of Lumens delivered to the task surface																				
0	119	119	119	119	116	116	116	116	111	111	111	106	106	106	102	102	102	100	100	100	
1	114	112	110	108	112	110	108	106	106	104	103	102	101	100	98	98	97	95	95	95	
2	110	105	102	99	108	104	101	98	101	98	96	98	96	94	95	93	92	90	90	90	
3	105	100	96	93	104	99	95	92	96	93	90	94	91	89	92	89	88	86	86	86	
4	101	95	91	87	100	94	90	87	92	89	86	90	87	85	88	86	84	82	82	82	
5	98	91	86	83	96	90	86	82	88	85	82	87	83	81	85	83	80	79	79	79	
6	94	87	82	79	93	86	82	78	85	81	78	84	80	77	82	79	77	76	76	76	
7	91	84	79	75	90	83	78	75	82	78	75	81	77	74	80	76	74	73	73	73	
8	88	80	75	72	87	80	75	72	79	75	72	78	74	71	77	74	71	70	70	70	
9	85	77	73	69	84	77	72	69	76	72	69	75	71	69	74	71	69	68	68	68	
10	82	74	70	67	81	74	70	67	73	69	67	73	69	66	72	69	66	65	65	65	

Zonal Lumen Summary

0°-10°	10°-20°	20°-30°	30°-40°	40°-50°	50°-60°	60°-70°	70°-80°	80°-90°
226 lm	424 lm	219 lm	56.4 lm	15.9 lm	8.25 lm	7.55 lm	6.31 lm	3.75 lm
90°-100°	100°-110°	110°-120°	120°-130°	130°-140°	140°-150°	150°-160°	160°-170°	170°-180°
0.000 lm	0.000 lm	0.000 lm	0.000 lm	0.000 lm	0.000 lm	0.000 lm	0.000 lm	0.000 lm