

Light efficiency:



Output: 985 lm

Light quality:

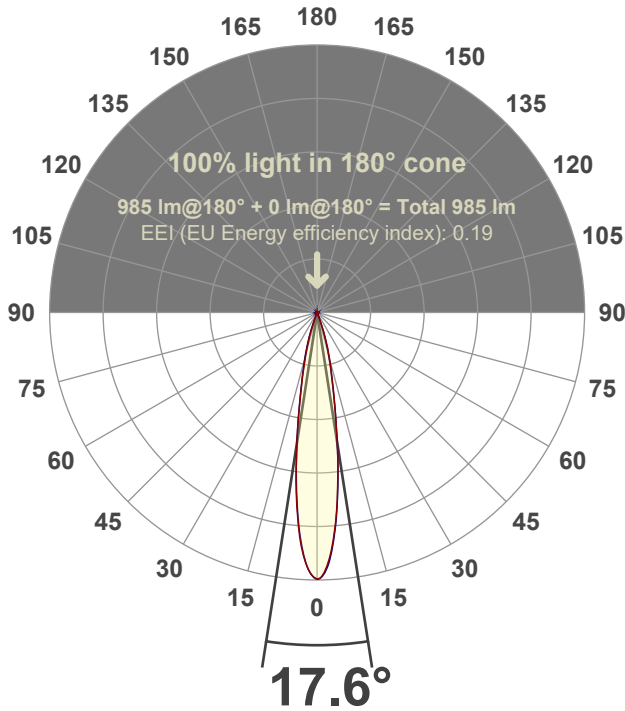


Peak: 8339 cd

Power: 14.2 W



Beam angle



Test number:

GR-F-F-CZ14-30k-SP-SQ-Rev2

Luminaire Model:

Graffiti Flat Square Fixed Downlight-CZ14 30k 15° Optic

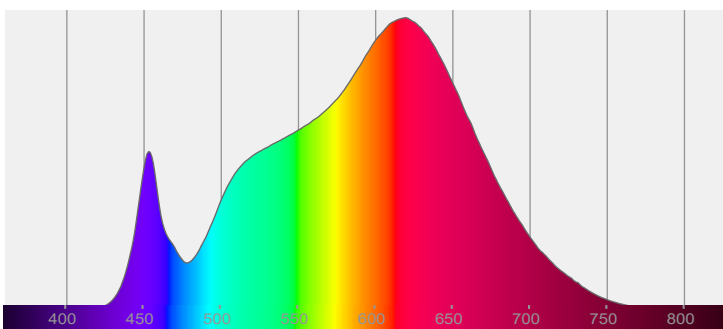
Date and time:

6/30/2022 9:26:23 PM

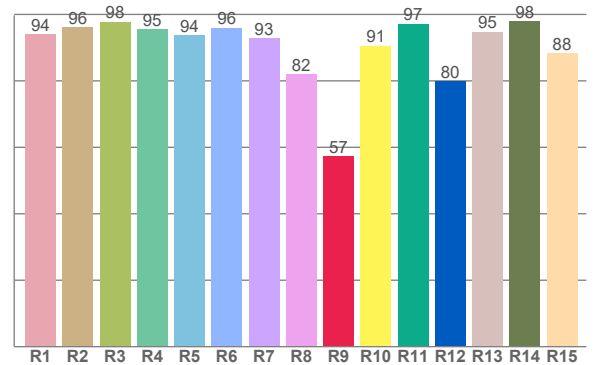
Delivered Lumens

985

Spectra



CRI: 93.5 (R1-R8)



Color parameters

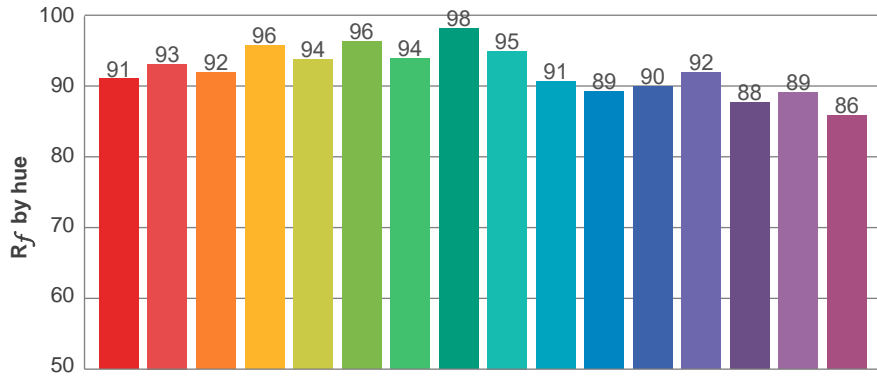
	Color rendering index	Red component	Color fidelity	Color gamut	Color quality scale	Color coordinate cie 1931	Color coordinate cie 1931	Color coordinate	Color coordinate	Color deviation from black body
	CRI	CRI R9	TM30 R _f	TM30 R _g	CQS	x	y	u	v	Δuv
	93.5	57.4	92.2	99.2	91.8	0.438	0.408	0.249	0.349	0.0014

R_f 92.2
Fidelity index R_f

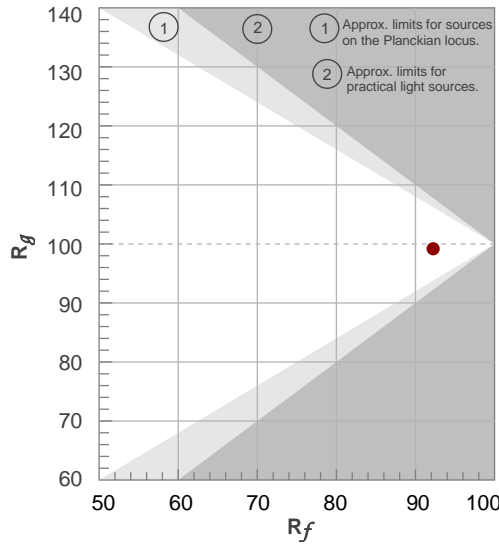
R_g 99.2
Gammut index R_g

TM30: 92.2

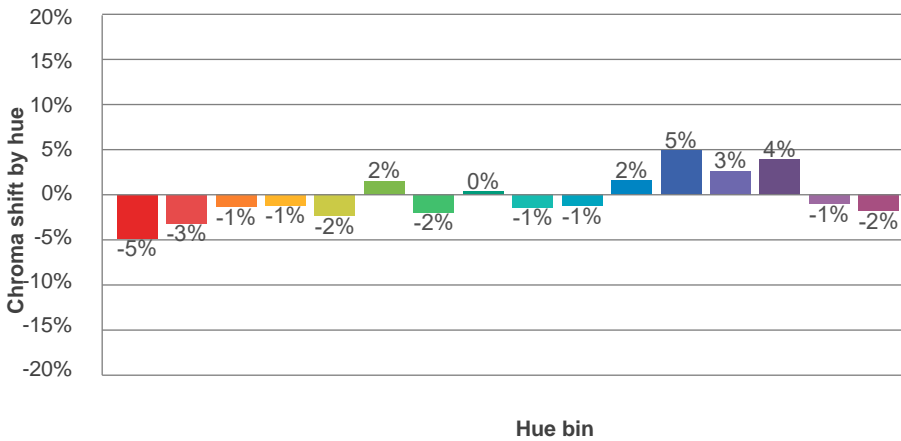
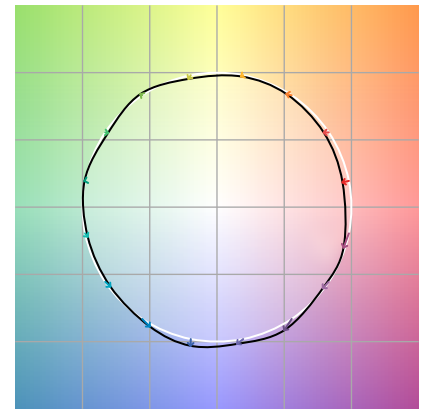
TM-30Color



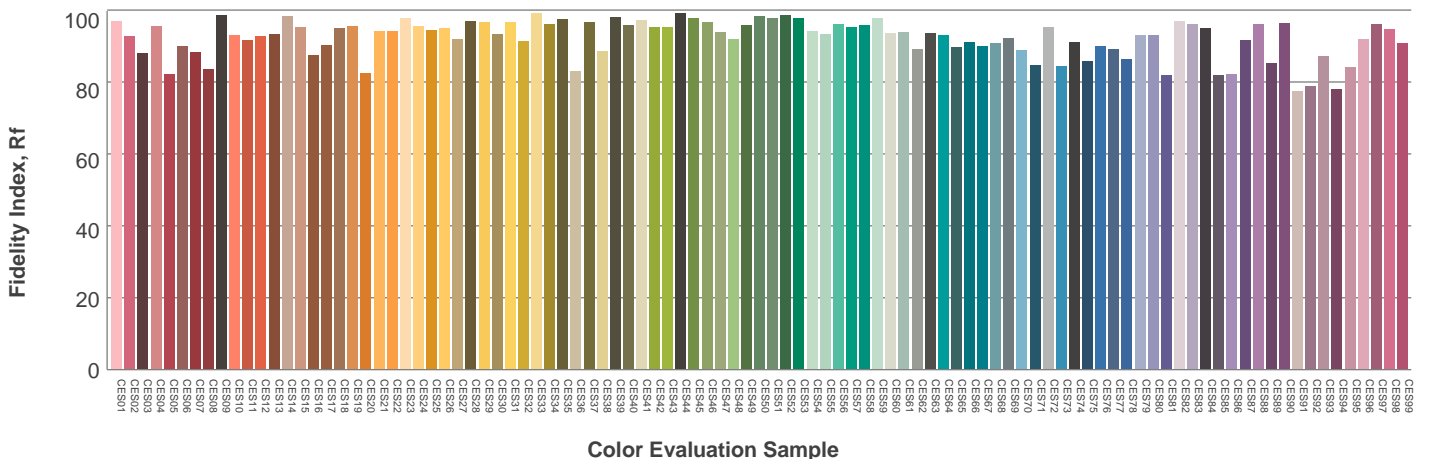
Hue Bin	R_f	Graphic shifts (%)	
		Chroma	Hue
1	91	-5%	0%
2	93	-3%	2%
3	92	-1%	4%
4	96	-1%	1%
5	94	-2%	2%
6	96	2%	1%
7	94	-2%	-1%
8	98	0%	0%
9	95	-1%	3%
10	91	-1%	5%
11	89	2%	8%
12	90	5%	1%
13	92	3%	-5%
14	88	4%	-9%
15	89	-1%	-6%
16	86	-2%	-11%



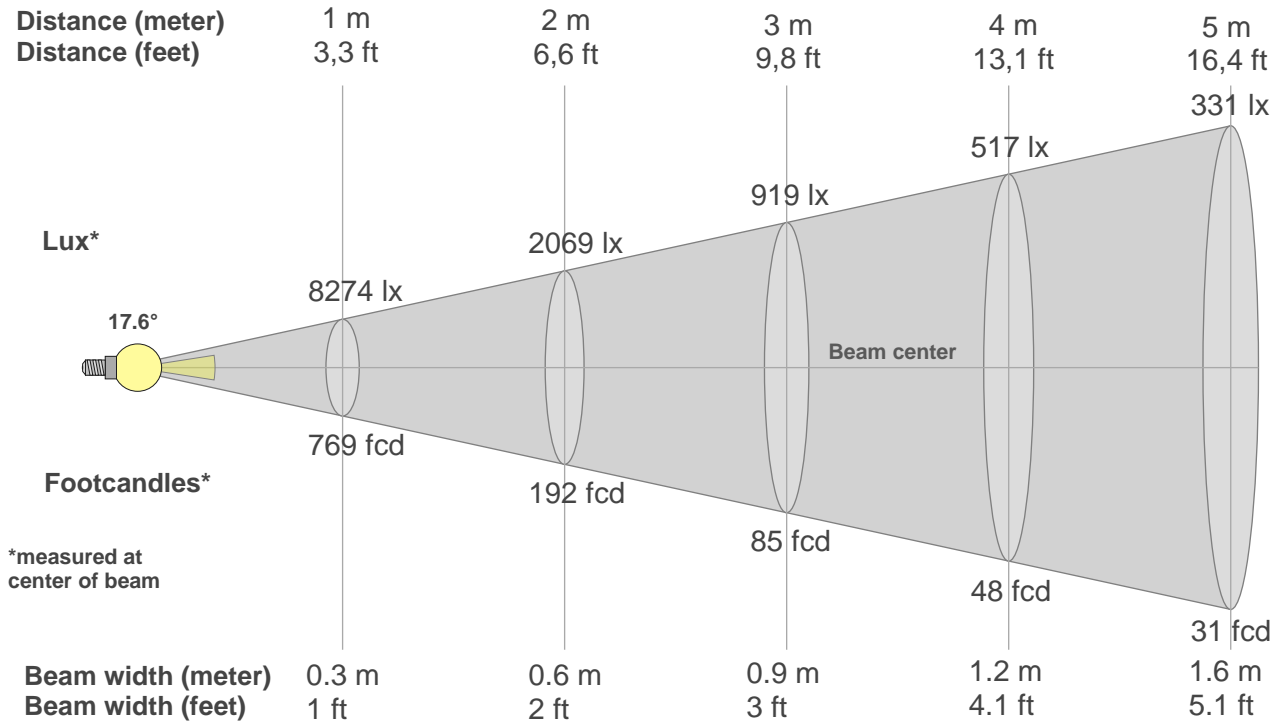
Color vector graphics



Color distortion



Beam details



Beam intensities from 1-20m

1m	2m	3m	4m	5m	6m	7m	8m	9m	10m	11m	12m	13m	14m	15m	16m	17m	18m	19m	20m
3.3ft	6.6ft	9.8ft	13.1ft	16.4ft	19.7ft	23ft	26.2ft	29.5ft	32.8ft	36.1ft	39.4ft	42.7ft	45.9ft	49.2ft	52.5ft	55.8ft	59.1ft	62.3ft	65.6ft
8274lx	2069lx	919lx	517lx	331lx	230lx	169lx	129lx	102lx	83lx	68lx	57lx	49lx	42lx	37lx	32lx	29lx	26lx	23lx	21lx
768.7fcd	192.2fcd	85.4fcd	48fcd	30.7fcd	21.4fcd	15.7fcd	12fcd	9.5fcd	7.7fcd	6.4fcd	5.3fcd	4.5fcd	3.9fcd	3.4fcd	3fcd	2.7fcd	2.4fcd	2.1fcd	1.9fcd

Intensities in 0° c-plane

0°	1°	2°	3°	4°	5°	6°	7°	8°	9°	10°	11°	12°	13°	14°	15°	16°	17°	18°	19°
8274	8211	7918	7624	7116	6578	5986	5329	4671	4046	3421	2908	2480	2072	1802	1532	1291	1067	850	650
100%	99%	96%	92%	86%	79%	72%	64%	56%	49%	41%	35%	30%	25%	22%	19%	16%	13%	10%	8%

Intensities in 90° c-plane

0°	1°	2°	3°	4°	5°	6°	7°	8°	9°	10°	11°	12°	13°	14°	15°	16°	17°	18°	19°
8274	8183	7987	7677	7167	6658	6010	5350	4690	4031	3382	2894	2405	2028	1719	1425	1191	956	745	541
100%	99%	97%	93%	87%	80%	73%	65%	57%	49%	41%	35%	29%	25%	21%	17%	14%	12%	9%	7%

Intensities in 180° c-plane

0°	1°	2°	3°	4°	5°	6°	7°	8°	9°	10°	11°	12°	13°	14°	15°	16°	17°	18°	19°
8274	8156	7997	7622	7246	6672	6054	5410	4723	4036	3454	2878	2405	2027	1659	1408	1156	929	716	514
100%	99%	97%	92%	88%	81%	73%	65%	57%	49%	42%	35%	29%	25%	20%	17%	14%	11%	9%	6%

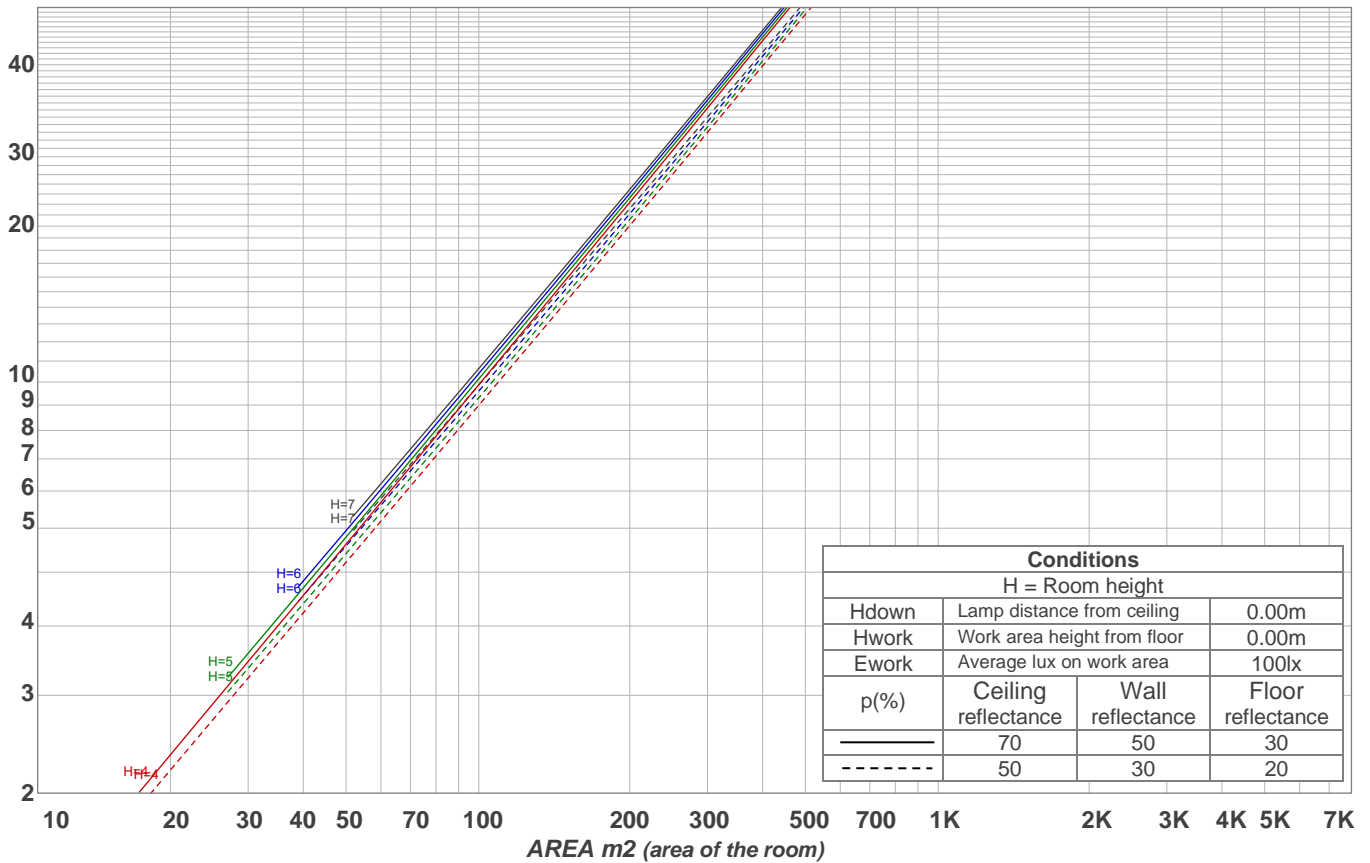
Intensities in 270° c-plane

0°	1°	2°	3°	4°	5°	6°	7°	8°	9°	10°	11°	12°	13°	14°	15°	16°	17°	18°	19°
8274	8150	7993	7604	7143	6622	5979	5337	4685	4033	3443	2928	2419	2094	1769	1500	1270	1043	834	625
100%	98%	97%	92%	86%	80%	72%	65%	57%	49%	42%	35%	29%	25%	21%	18%	15%	13%	10%	8%

Beam angle 50%	Field angle 10%	Cutoff angle 2,5%	Intensity ratio in 120° cone	Intensity ratio in 90° cone
17.6°	35.6°	42.7°	98.9%	98.5%

LAMPS (number of lamps)
50

Light planning Luminaire budgetary diagram



Luminaire budgetary diagram AREA m2 (area of the room) Coefficients of Utilization

Ceiling reflectance	80				70				50			30			10			0			
Wall reflectance	70	50	30	10	70	50	30	10	50	30	10	50	30	10	50	30	10	50	30	10	0
Floor reflectance	20	20	20	20	20	20	20	20	20	20	20	20	20	20	20	20	20	20	20	20	0
RCR	(RCR: Room Cavity Ratio)																				
	Room Values are expressed as percentage of Lumens delivered to the task surface																				
0	119	119	119	119	116	116	116	116	111	111	111	106	106	106	102	102	102	100	100	100	
1	115	113	112	110	113	111	110	108	107	106	105	104	103	102	100	100	99	99	99	97	
2	112	109	106	104	110	107	105	103	104	102	101	101	100	99	99	98	97	97	96	95	
3	109	105	102	100	108	104	101	99	102	99	97	99	98	96	97	96	95	95	94	93	
4	107	102	99	96	105	101	98	96	99	97	95	98	95	94	96	94	93	93	92	91	
5	104	100	96	93	103	99	95	93	97	94	92	96	93	92	94	92	91	91	90	89	
6	102	97	94	91	101	96	93	91	95	92	90	94	92	90	93	91	89	89	88	87	
7	100	95	92	89	99	94	91	89	93	91	89	92	90	88	92	89	88	88	87	86	
8	98	93	90	87	98	93	89	87	92	89	87	91	88	87	90	88	86	86	85	84	
9	97	91	88	86	96	91	88	86	90	87	85	89	87	85	89	87	85	85	84	83	
10	95	90	86	84	94	89	86	84	89	86	84	88	86	84	88	85	84	84	83	82	

Zonal Lumen Summary

0°-10°	10°-20°	20°-30°	30°-40°	40°-50°	50°-60°	60°-70°	70°-80°	80°-90°
523 lm	410 lm	32.0 lm	4.83 lm	2.36 lm	2.41 lm	2.95 lm	3.48 lm	4.38 lm
90°-100°	100°-110°	110°-120°	120°-130°	130°-140°	140°-150°	150°-160°	160°-170°	170°-180°
0.000 lm	0.000 lm	0.000 lm	0.000 lm	0.000 lm	0.000 lm	0.000 lm	0.000 lm	0.000 lm