

Light efficiency:



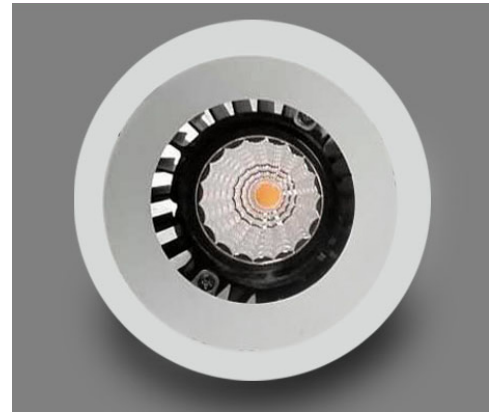
Output: 1057 lm

Light quality:

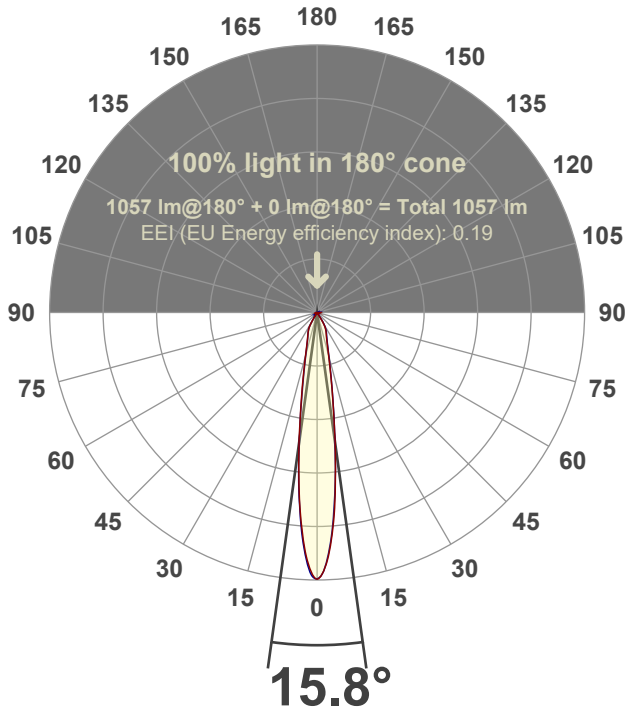


Peak: 6878 cd

Power: 15.0 W



Beam angle



Test number:

GR-O-F-A14-2722-SP-RD-Rev2

Luminaire Model:

Graffiti Open Round Fixed Downlight-A14-2722 15° Optic

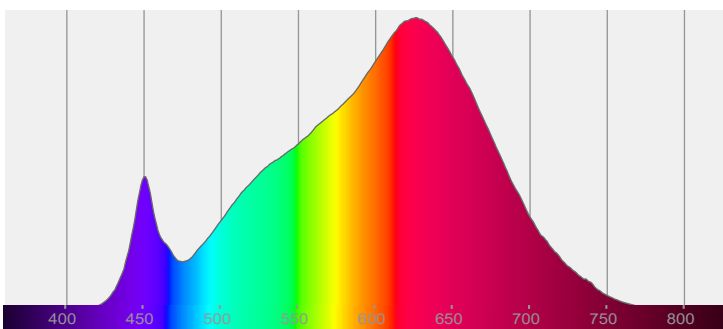
Date and time:

3/24/2022 7:32:07 PM

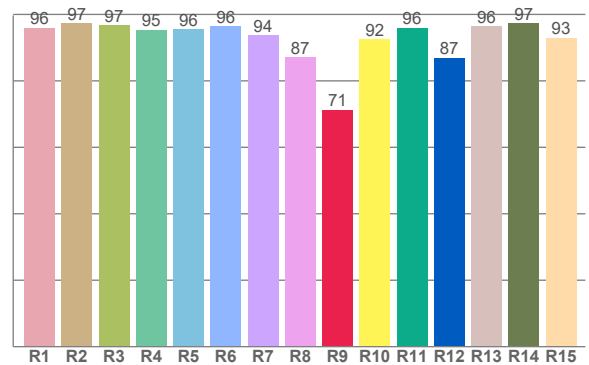
Delivered Lumens

1057

Spectra



CRI: 94.8 (R1-R8)



Color parameters

	Color rendering index	Red component	Color fidelity	Color gamut	Color quality scale	Color coordinate cie 1931	Color coordinate cie 1931	Color coordinate	Color coordinate	Color deviation from black body
	CRI	CRI R9	TM30 R _f	TM30 R _g	CQS	x	y	u	v	Δuv
	94.8	71.3	92.6	102.0	91.4	0.447	0.402	0.258	0.348	-0.0020

R_f 92.6

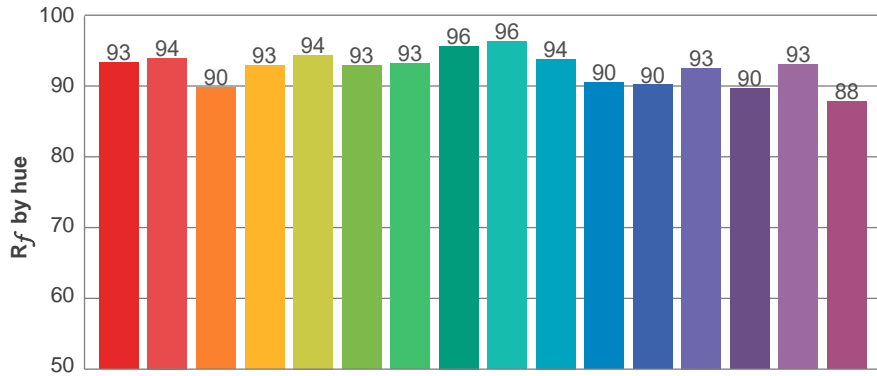
Fidelity index R_f

R_g 102.0

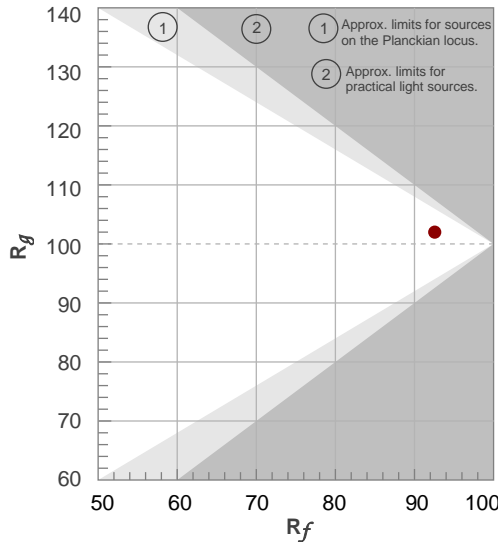
Gammut index R_g

TM30: 92.6

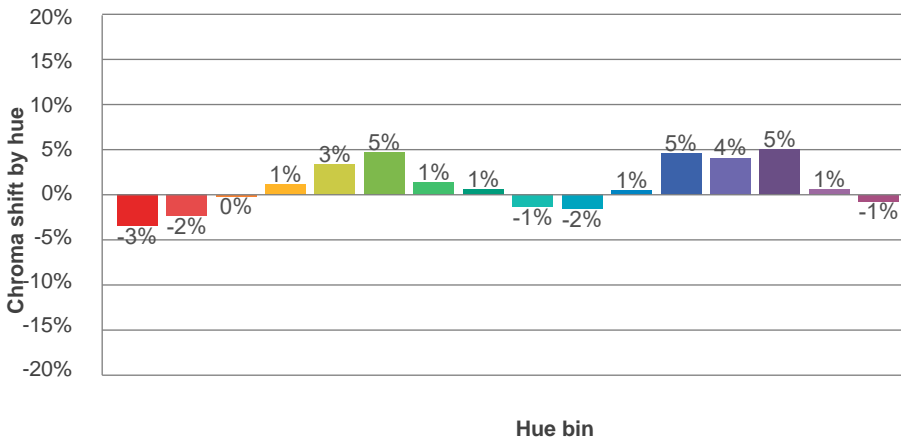
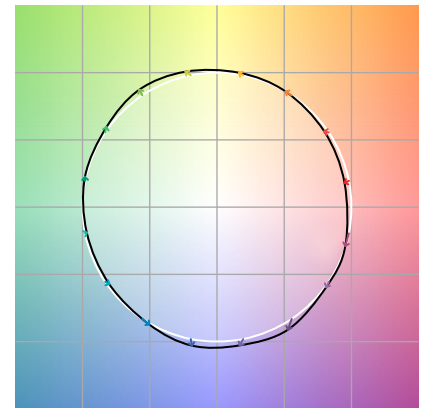
TM-30Color



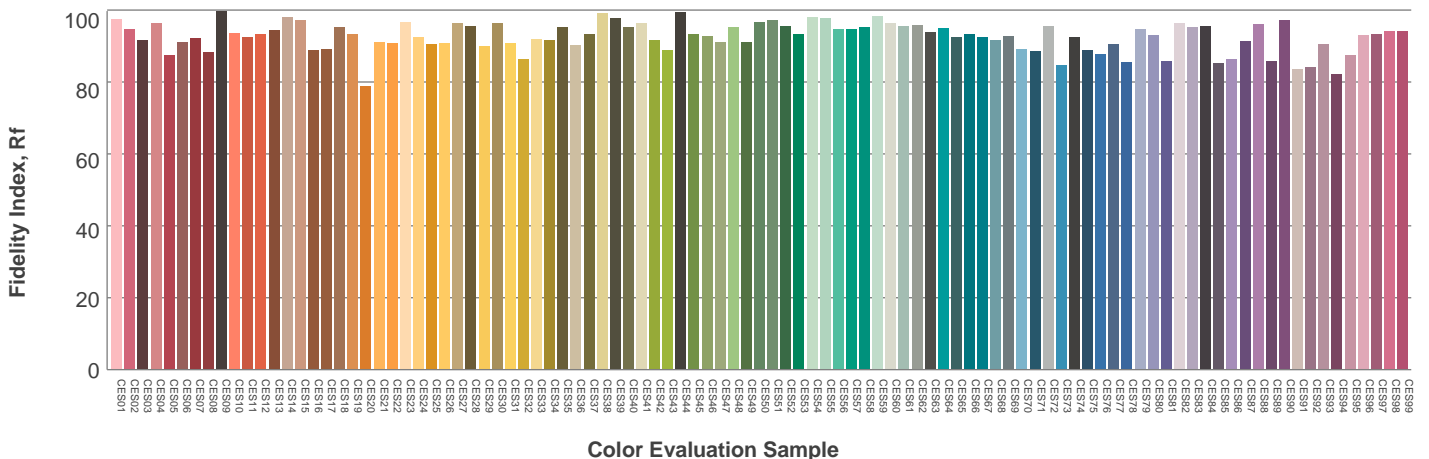
Hue Bin	R_f	Graphic shifts (%)	
		Chroma	Hue
1	93	-3%	-1%
2	94	-2%	2%
3	90	0%	5%
4	93	1%	3%
5	94	3%	3%
6	93	5%	0%
7	93	1%	-4%
8	96	1%	-3%
9	96	-1%	0%
10	94	-2%	3%
11	90	1%	7%
12	90	5%	2%
13	93	4%	-3%
14	90	5%	-7%
15	93	1%	-4%
16	88	-1%	-10%



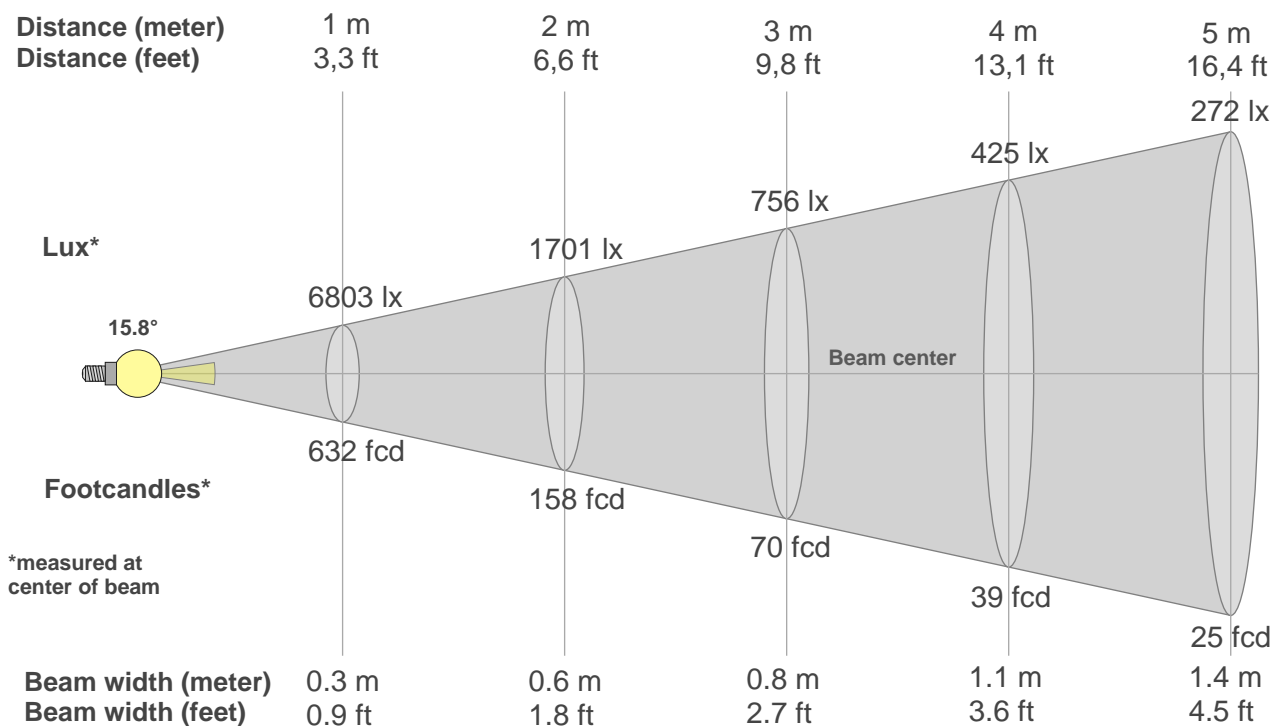
Color vector graphics



Color distortion



Beam details



Beam intensities from 1-20m

1m	2m	3m	4m	5m	6m	7m	8m	9m	10m	11m	12m	13m	14m	15m	16m	17m	18m	19m	20m
3.3ft	6.6ft	9.8ft	13.1ft	16.4ft	19.7ft	23ft	26.2ft	29.5ft	32.8ft	36.1ft	39.4ft	42.7ft	45.9ft	49.2ft	52.5ft	55.8ft	59.1ft	62.3ft	65.6ft
6803lx	1701lx	756lx	425lx	272lx	189lx	139lx	106lx	84lx	68lx	56lx	47lx	40lx	35lx	30lx	27lx	24lx	21lx	19lx	17lx
632fcd	158fcd	70.2fcd	39.5fcd	25.3fcd	17.6fcd	12.9fcd	9.9fcd	7.8fcd	6.3fcd	5.2fcd	4.4fcd	3.7fcd	3.2fcd	2.8fcd	2.5fcd	2.2fcd	2fcd	1.8fcd	1.6fcd

Intensities in 0° c-plane

0°	2°	4°	6°	8°	10°	12°	14°	16°	18°	20°	22°	24°	26°	28°	30°	32°	34°	36°	38°
6803	6471	5629	4523	3371	2396	1764	1344	1056	862	730	641	577	519	456	375	264	113	33	5
100%	95%	83%	66%	50%	35%	26%	20%	16%	13%	11%	9%	8%	8%	7%	6%	4%	2%	0%	0%

Intensities in 90° c-plane

0°	2°	4°	6°	8°	10°	12°	14°	16°	18°	20°	22°	24°	26°	28°	30°	32°	34°	36°	38°
6803	6422	5593	4457	3335	2451	1803	1356	1066	887	760	669	601	544	474	392	290	168	39	8
100%	94%	82%	66%	49%	36%	27%	20%	16%	13%	11%	10%	9%	8%	7%	6%	4%	2%	1%	0%

Intensities in 180° c-plane

0°	2°	4°	6°	8°	10°	12°	14°	16°	18°	20°	22°	24°	26°	28°	30°	32°	34°	36°	38°
6803	6424	5573	4494	3374	2396	1778	1349	1057	862	731	649	582	517	444	349	195	66	13	5
100%	94%	82%	66%	50%	35%	26%	20%	16%	13%	11%	10%	9%	8%	7%	5%	3%	1%	0%	0%

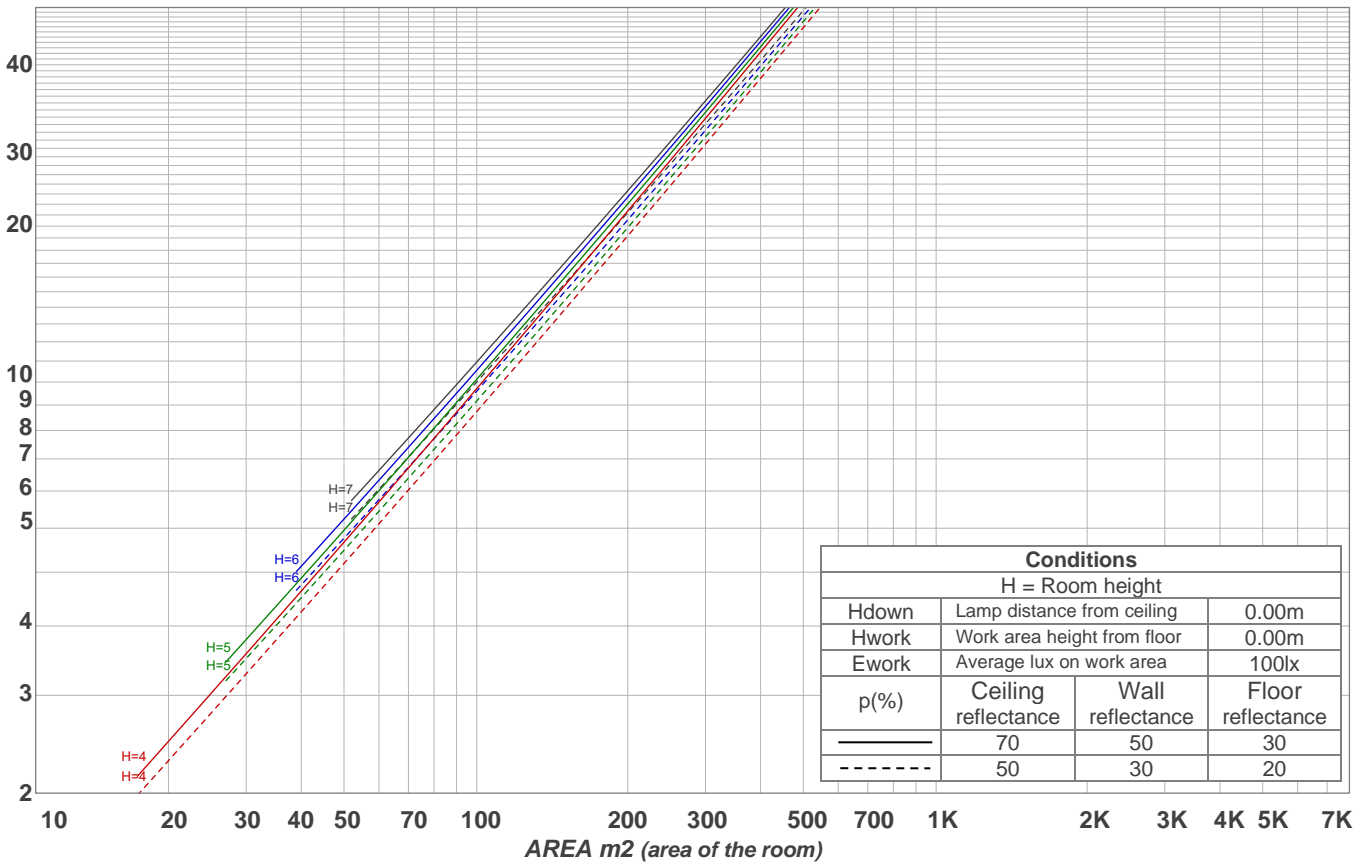
Intensities in 270° c-plane

0°	2°	4°	6°	8°	10°	12°	14°	16°	18°	20°	22°	24°	26°	28°	30°	32°	34°	36°	38°
6803	6492	5676	4523	3332	2391	1724	1288	1010	839	720	635	569	512	440	300	145	31	5	4
100%	95%	83%	66%	49%	35%	25%	19%	15%	12%	11%	9%	8%	8%	6%	4%	2%	0%	0%	0%

Beam angle 50%	Field angle 10%	Cutoff angle 2,5%	Intensity ratio in 120° cone	Intensity ratio in 90° cone
15.8°	42.3°	65.6°	99.2%	98.9%

LAMPS (number of lamps)
50

Light planning Luminaire budgetary diagram



Luminaire budgetary diagram AREA m2 (area of the room) Coefficients of Utilization

Ceiling reflectance	80				70				50			30			10			0			
Wall reflectance	70	50	30	10	70	50	30	10	50	30	10	50	30	10	50	30	10	50	30	10	0
Floor reflectance	20	20	20	20	20	20	20	20	20	20	20	20	20	20	20	20	20	20	20	20	0
RCR	(RCR: Room Cavity Ratio)																				
	Room Values are expressed as percentage of Lumens delivered to the task surface																				
0	119	119	119	119	116	116	116	116	111	111	111	106	106	106	102	102	102	100	100	100	
1	115	113	111	109	112	110	109	107	106	105	104	103	102	101	99	99	98	96	96	96	
2	111	107	104	101	109	105	102	100	102	100	98	99	97	96	97	95	94	92	92	92	
3	107	102	98	95	105	101	97	95	98	96	93	96	94	92	94	92	90	89	89	89	
4	104	98	94	91	102	97	93	90	95	92	89	93	90	88	91	89	87	86	86	86	
5	100	94	90	87	99	93	89	86	92	88	86	90	87	85	89	86	84	83	83	83	
6	97	91	86	83	96	90	86	83	89	85	83	87	84	82	86	84	81	80	80	80	
7	94	88	83	80	93	87	83	80	86	82	80	85	82	79	84	81	79	78	78	78	
8	92	85	81	78	91	84	80	77	83	80	77	83	79	77	82	79	77	76	76	76	
9	89	82	78	75	88	82	78	75	81	77	75	80	77	75	80	77	74	73	73	73	
10	87	80	76	73	86	79	75	73	79	75	73	78	75	72	77	74	72	71	71	71	

Zonal Lumen Summary

0°-10°	10°-20°	20°-30°	30°-40°	40°-50°	50°-60°	60°-70°	70°-80°	80°-90°
392 lm	343 lm	250 lm	58.9 lm	2.16 lm	2.43 lm	2.55 lm	2.60 lm	3.27 lm
90°-100°	100°-110°	110°-120°	120°-130°	130°-140°	140°-150°	150°-160°	160°-170°	170°-180°
0.000 lm	0.000 lm	0.000 lm	0.000 lm	0.000 lm	0.000 lm	0.000 lm	0.000 lm	0.000 lm