

Light efficiency:



Output: 1035 lm

Light quality:

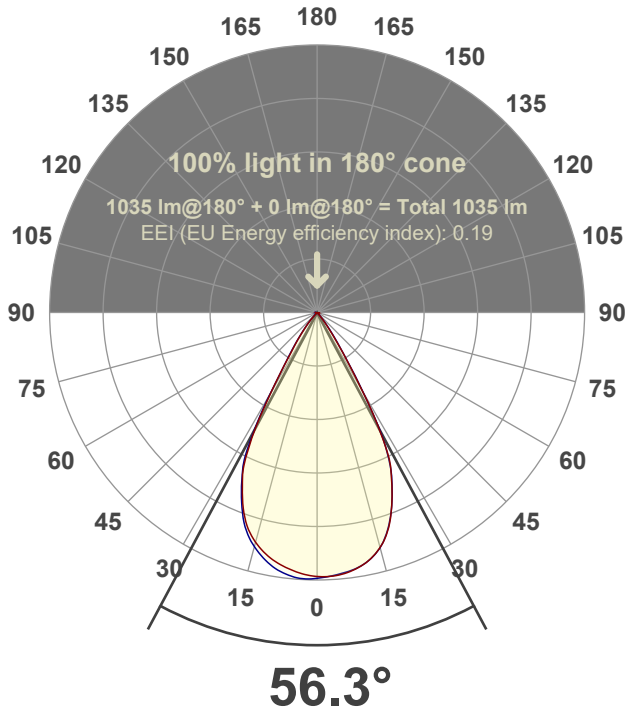


Peak: 1391 cd

Power: 15.0 W



Beam angle



Test number:

GR-O-F-A14-2722-WF-SQ-Rev2

Luminaire Model:

Graffiti Open Square Fixed Downlight-A14-2722 60° Optic

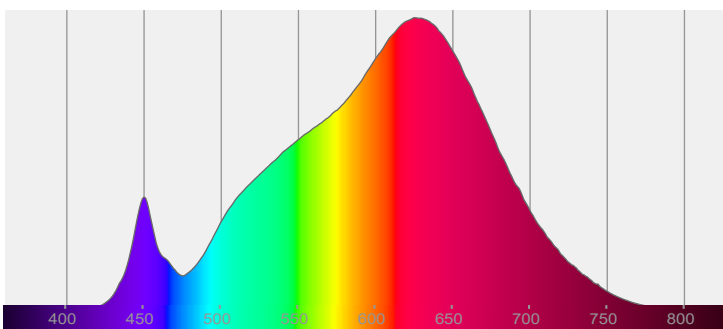
Date and time:

6/30/2022 6:28:18 PM

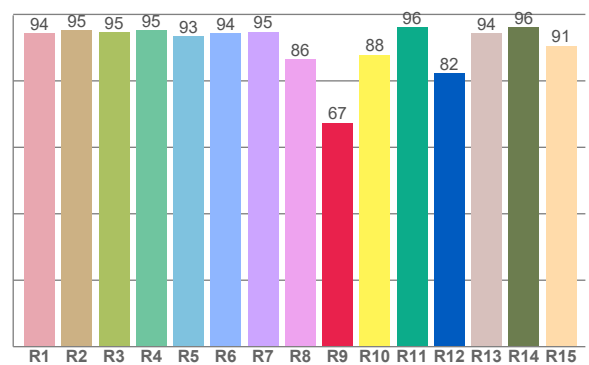
Delivered Lumens

1035

Spectra



CRI: 93.6 (R1-R8)



Color parameters

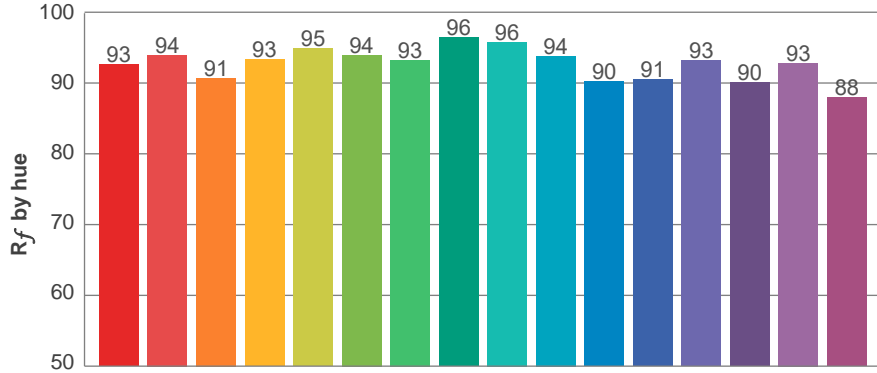
	Color rendering index	Red component	Color fidelity	Color gamut	Color quality scale	Color coordinate cie 1931	Color coordinate cie 1931	Color coordinate	Color coordinate	Color deviation from black body
	CRI	CRI R9	TM30 R _f	TM30 R _g	CQS	x	y	u	v	Δuv
	93.6	67.4	92.7	100.9	91.5	0.457	0.413	0.259	0.352	0.0012

R_f 92.7
Fidelity index R_f

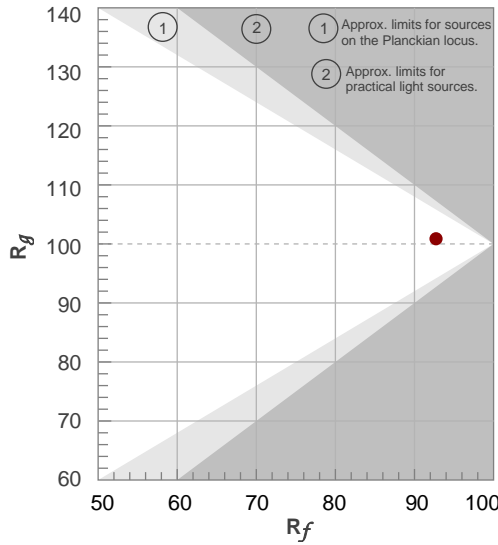
R_g 100.9
Gammut index R_g

TM30: 92.7

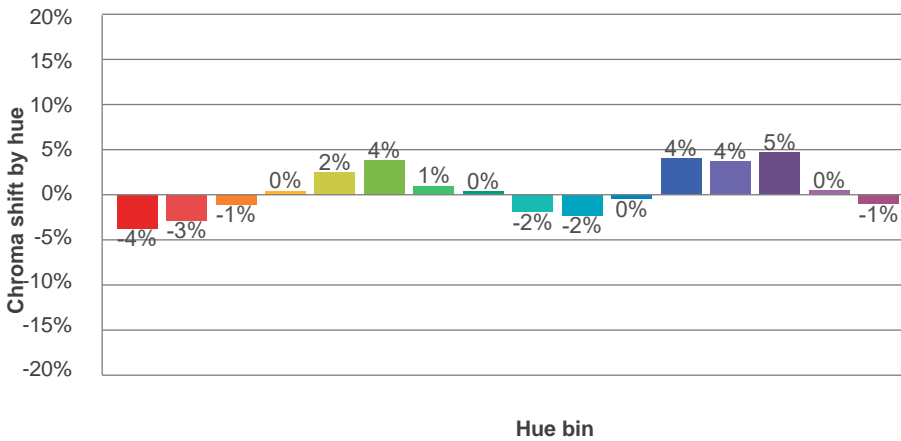
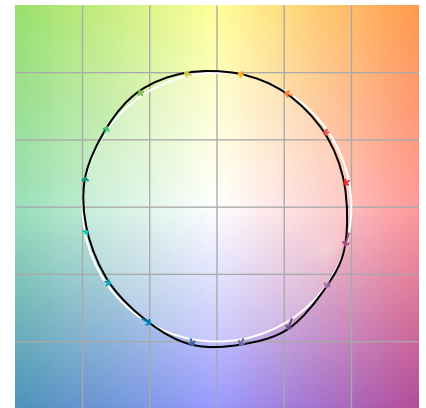
TM-30Color



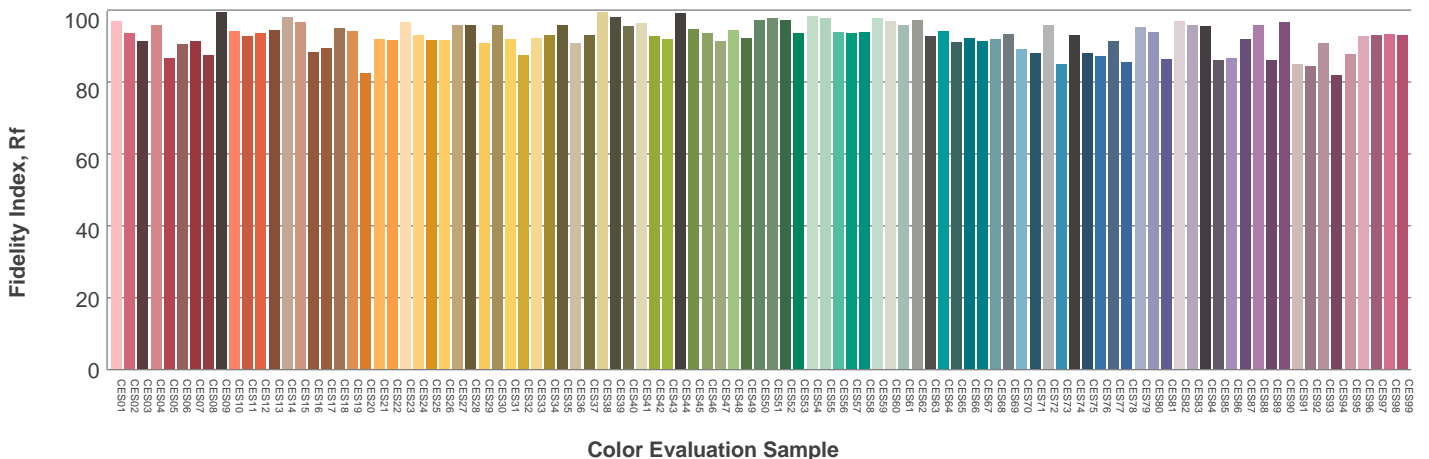
Hue Bin	R_f	Graphic shifts (%)	
		Chroma	Hue
1	93	-4%	-1%
2	94	-3%	2%
3	91	-1%	5%
4	93	0%	3%
5	95	2%	4%
6	94	4%	0%
7	93	1%	-4%
8	96	0%	-2%
9	96	-2%	-1%
10	94	-2%	3%
11	90	0%	7%
12	91	4%	2%
13	93	4%	-3%
14	90	5%	-6%
15	93	0%	-4%
16	88	-1%	-9%



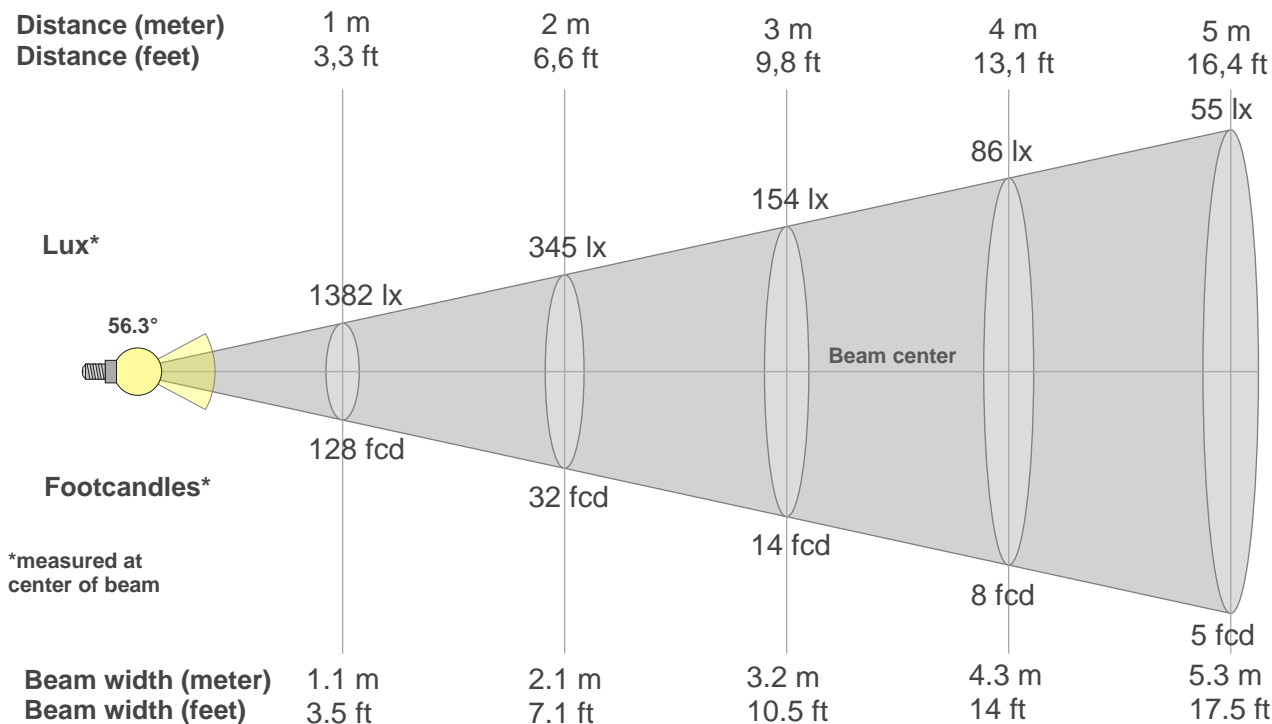
Color vector graphics



Color distortion



Beam details



Beam intensities from 1-20m

1m	2m	3m	4m	5m	6m	7m	8m	9m	10m	11m	12m	13m	14m	15m	16m	17m	18m	19m	20m
3.3ft	6.6ft	9.8ft	13.1ft	16.4ft	19.7ft	23ft	26.2ft	29.5ft	32.8ft	36.1ft	39.4ft	42.7ft	45.9ft	49.2ft	52.5ft	55.8ft	59.1ft	62.3ft	65.6ft
1382lx	345lx	154lx	86lx	55lx	38lx	28lx	22lx	17lx	14lx	11lx	10lx	8lx	7lx	6lx	5lx	5lx	4lx	4lx	3lx
128.4fcd	32.1fcd	14.3fcd	8fcd	5.1fcd	3.6fcd	2.6fcd	2fcd	1.6fcd	1.3fcd	1.1fcd	0.9fcd	0.8fcd	0.7fcd	0.6fcd	0.5fcd	0.4fcd	0.4fcd	0.4fcd	0.3fcd

Intensities in 0° c-plane

0°	2°	4°	6°	8°	10°	12°	14°	16°	18°	20°	22°	24°	26°	28°	30°	32°	34°	36°	38°
1382	1379	1377	1369	1357	1341	1319	1288	1248	1194	1126	1046	958	861	699	501	312	190	123	79
100%	100%	100%	99%	98%	97%	95%	93%	90%	86%	81%	76%	69%	62%	51%	36%	23%	14%	9%	6%

Intensities in 90° c-plane

0°	2°	4°	6°	8°	10°	12°	14°	16°	18°	20°	22°	24°	26°	28°	30°	32°	34°	36°	38°
1382	1381	1373	1365	1355	1340	1318	1288	1247	1193	1124	1045	959	855	713	498	325	207	136	87
100%	100%	99%	99%	98%	97%	95%	93%	90%	86%	81%	76%	69%	62%	52%	36%	24%	15%	10%	6%

Intensities in 180° c-plane

0°	2°	4°	6°	8°	10°	12°	14°	16°	18°	20°	22°	24°	26°	28°	30°	32°	34°	36°	38°
1382	1371	1361	1348	1332	1312	1288	1258	1222	1177	1115	1041	957	858	697	501	339	229	167	114
100%	99%	98%	98%	96%	95%	93%	91%	88%	85%	81%	75%	69%	62%	50%	36%	25%	17%	12%	8%

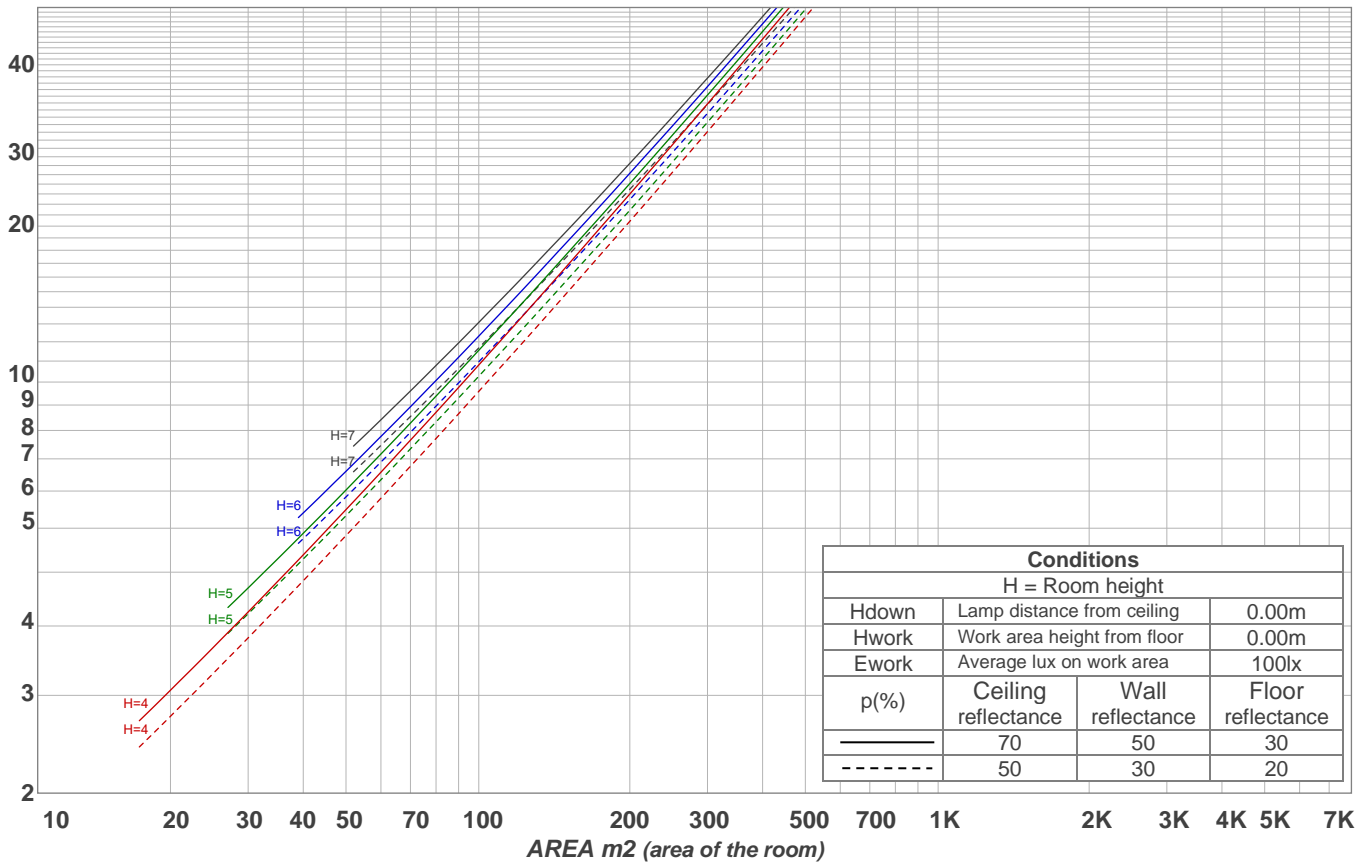
Intensities in 270° c-plane

0°	2°	4°	6°	8°	10°	12°	14°	16°	18°	20°	22°	24°	26°	28°	30°	32°	34°	36°	38°
1382	1391	1389	1379	1365	1345	1317	1284	1244	1195	1132	1055	970	871	712	516	330	238	171	119
100%	101%	101%	100%	99%	97%	95%	93%	90%	86%	82%	76%	70%	63%	52%	37%	24%	17%	12%	9%

Beam angle 50%	Field angle 10%	Cutoff angle 2,5%	Intensity ratio in 120° cone	Intensity ratio in 90° cone
56.3°	72.8°	85.3°	99.3%	98.7%

LAMPS (number of lamps)
50

Light planning Luminaire budgetary diagram



Luminaire budgetary diagram AREA m2 (area of the room) Coefficients of Utilization

Ceiling reflectance	80				70				50			30			10			0			
Wall reflectance	70	50	30	10	70	50	30	10	50	30	10	50	30	10	50	30	10	50	30	10	0
Floor reflectance	20	20	20	20	20	20	20	20	20	20	20	20	20	20	20	20	20	20	20	20	0
RCR	(RCR: Room Cavity Ratio) Room Values are expressed as percentage of Lumens delivered to the task surface																				
0	119	119	119	119	116	116	116	116	111	111	111	106	106	106	102	102	102	100	100	100	
1	114	111	109	107	111	109	107	105	105	103	102	101	100	99	98	97	96	94	94	94	
2	109	104	101	97	107	103	99	96	99	97	94	96	94	92	94	92	90	89	89	89	
3	104	98	93	90	102	97	92	89	94	91	88	92	89	86	90	87	85	84	84	84	
4	99	92	87	83	98	91	87	83	89	85	82	87	84	81	85	83	80	79	79	79	
5	95	87	82	78	93	86	81	78	85	80	77	83	79	76	81	78	76	74	74	74	
6	91	83	77	73	89	82	77	73	80	76	72	79	75	72	78	74	71	70	70	70	
7	87	78	73	69	85	78	72	69	76	72	68	75	71	68	74	70	68	66	66	66	
8	83	74	69	65	82	74	69	65	73	68	65	72	67	64	71	67	64	63	63	63	
9	79	71	65	62	78	70	65	61	69	65	61	68	64	61	68	64	61	60	60	60	
10	76	67	62	58	75	67	62	58	66	61	58	65	61	58	65	61	58	57	57	57	

Zonal Lumen Summary

0°-10°	10°-20°	20°-30°	30°-40°	40°-50°	50°-60°	60°-70°	70°-80°	80°-90°
130 lm	352 lm	400 lm	127 lm	17.9 lm	2.25 lm	2.55 lm	2.61 lm	2.18 lm
90°-100°	100°-110°	110°-120°	120°-130°	130°-140°	140°-150°	150°-160°	160°-170°	170°-180°
0.000 lm	0.000 lm	0.000 lm	0.000 lm	0.000 lm	0.000 lm	0.000 lm	0.000 lm	0.000 lm