

Light efficiency:



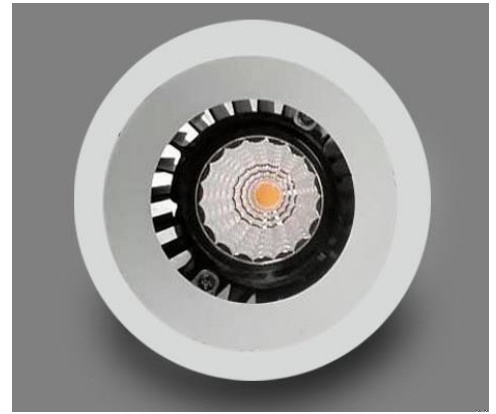
Output: 944 lm

Light quality:

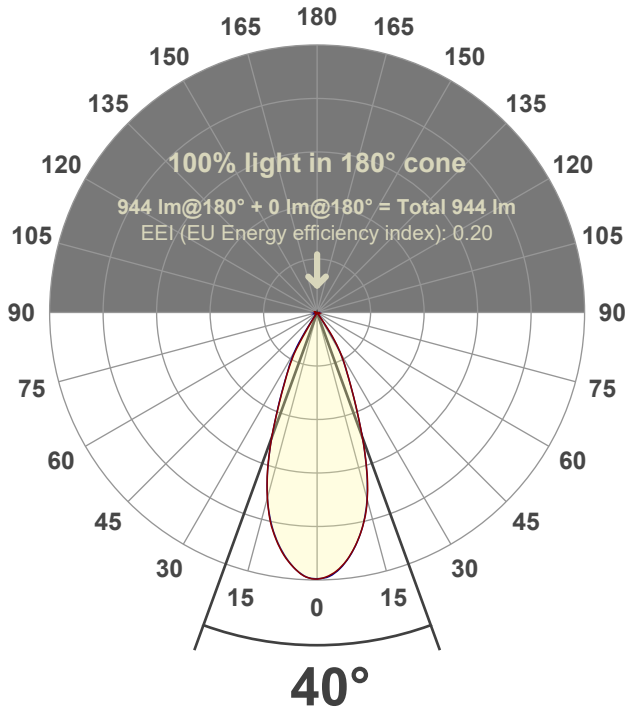


Peak: 2068 cd

Power: 14.6 W



Beam angle



Test number:

GR-O-F-A14-3019-FL-RD-Rev2

Luminaire Model:

Graffiti Open Round Fixed Downlight-A14-3019 38° Optic

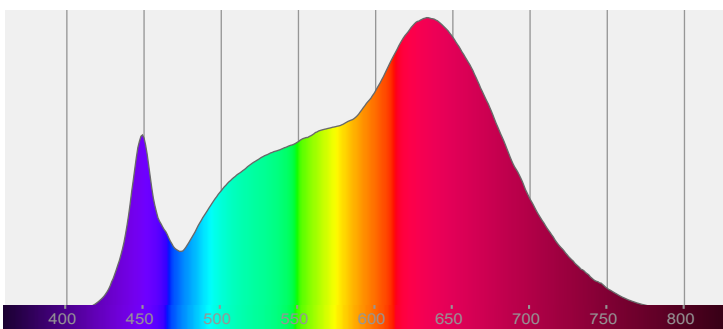
Date and time:

3/24/2022 9:50:16 PM

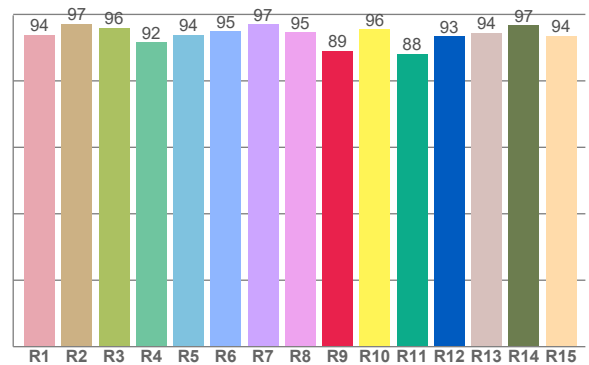
Delivered Lumens

944

Spectra



CRI: 94.9 (R1-R8)



Color parameters

	Color rendering index	Red component	Color fidelity	Color gamut	Color quality scale	Color coordinate cie 1931	Color coordinate cie 1931	Color coordinate	Color coordinate	Color deviation from black body
	CRI	CRI R9	TM30 R <sub>f</sub>	TM30 R <sub>g</sub>	CQS	x	y	u	v	Δuv
	94.9	89.0	94.8	105.5	95.0	0.422	0.387	0.248	0.342	-0.0048

**$R_f$  94.8**

Fidelity index  $R_f$

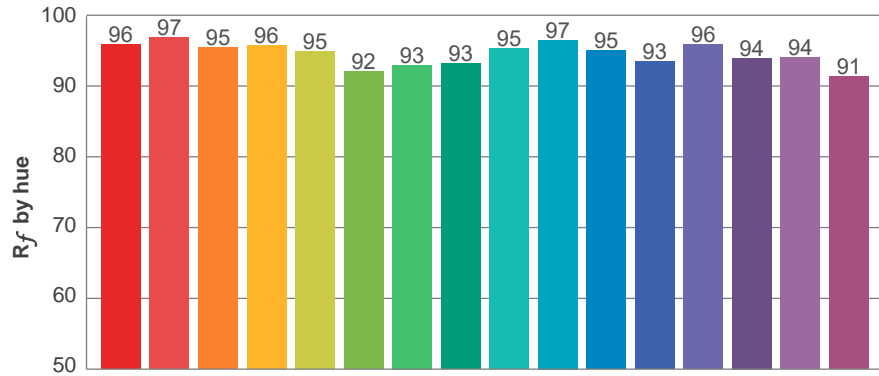
---

**$R_g$  105.5**

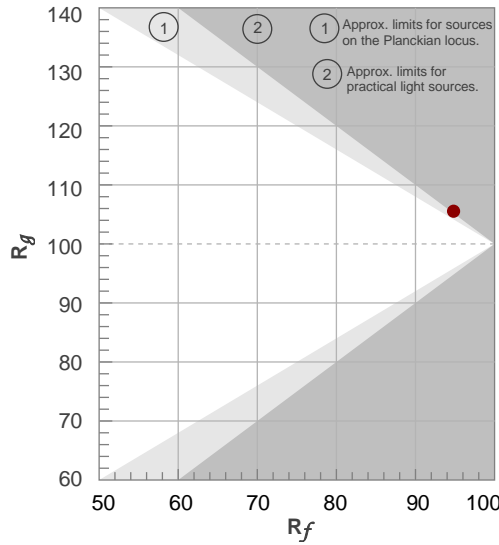
Gammut index  $R_g$

TM30: 94.8

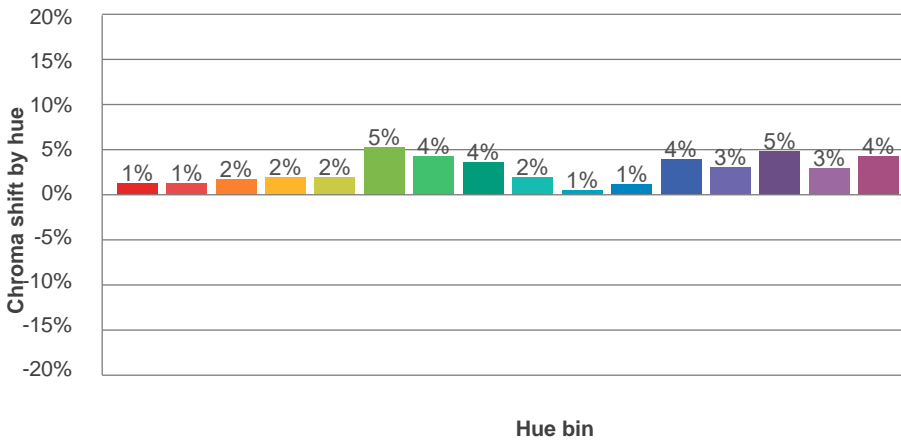
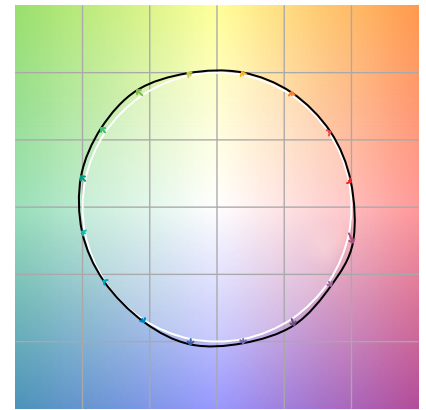
TM-30Color



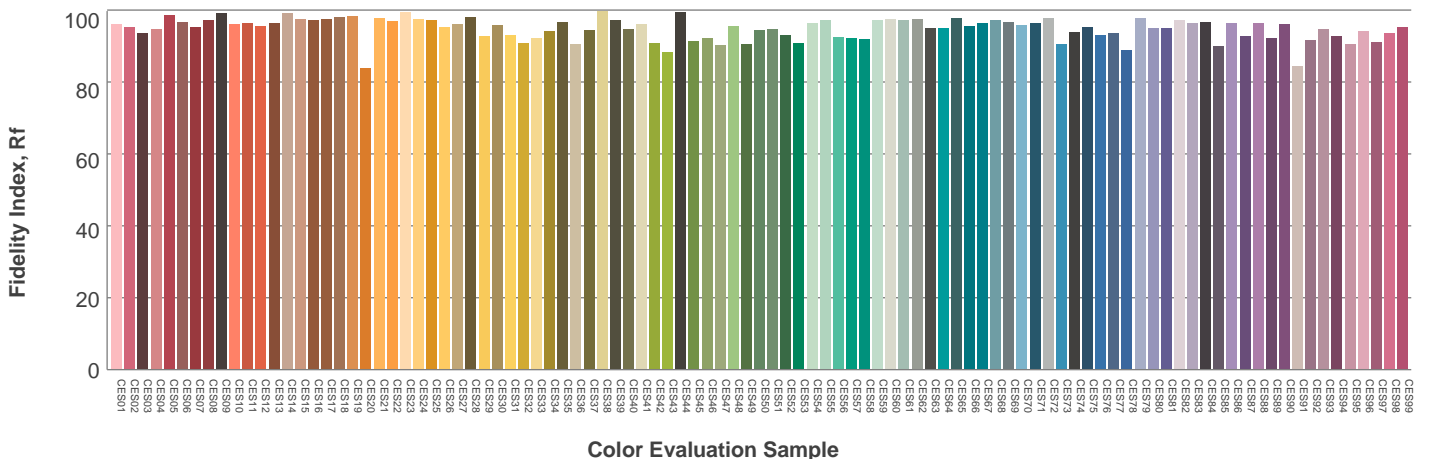
Hue Bin	$R_f$	Graphic shifts (%)	
		Chroma	Hue
1	96	1%	-1%
2	97	1%	0%
3	95	2%	1%
4	96	2%	1%
5	95	2%	2%
6	92	5%	1%
7	93	4%	-1%
8	93	4%	-3%
9	95	2%	-2%
10	97	1%	-1%
11	95	1%	2%
12	93	4%	1%
13	96	3%	-1%
14	94	5%	-1%
15	94	3%	-1%
16	91	4%	-6%



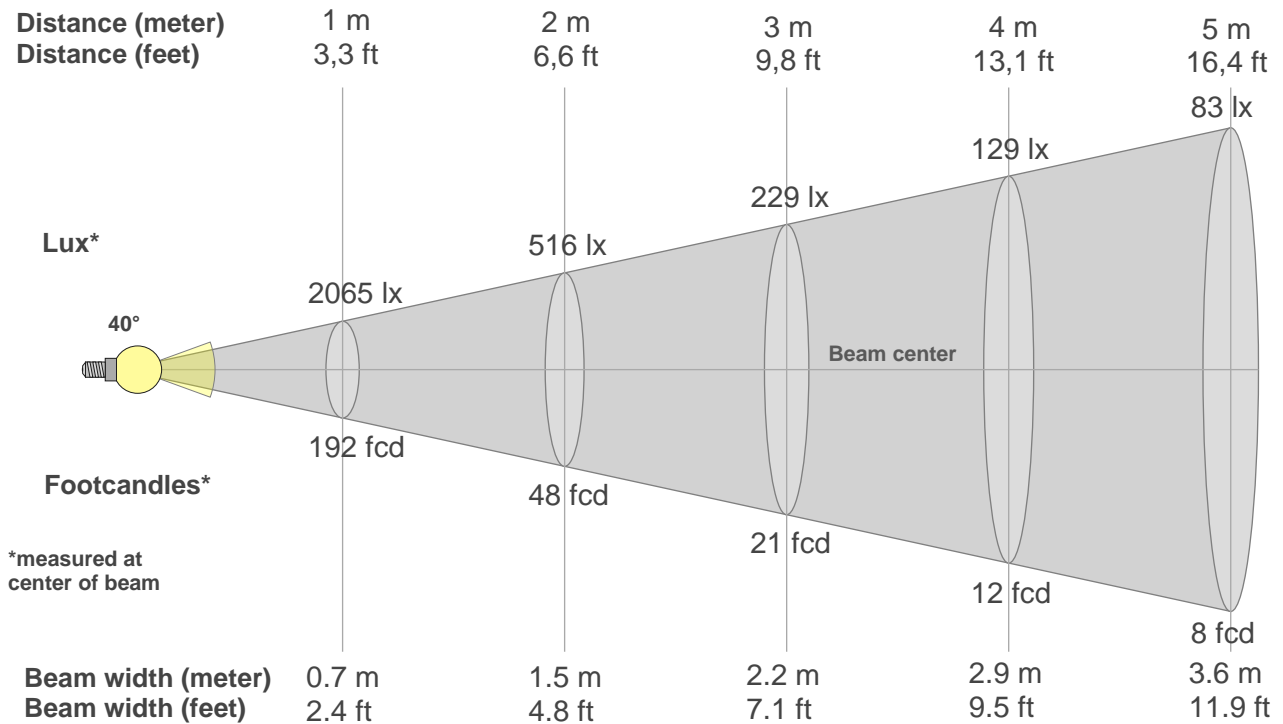
Color vector graphics



Color distortion



### Beam details



#### Beam intensities from 1-20m

1m	2m	3m	4m	5m	6m	7m	8m	9m	10m	11m	12m	13m	14m	15m	16m	17m	18m	19m	20m
3.3ft	6.6ft	9.8ft	13.1ft	16.4ft	19.7ft	23ft	26.2ft	29.5ft	32.8ft	36.1ft	39.4ft	42.7ft	45.9ft	49.2ft	52.5ft	55.8ft	59.1ft	62.3ft	65.6ft
2065lx	516lx	229lx	129lx	83lx	57lx	42lx	32lx	25lx	21lx	17lx	14lx	12lx	11lx	9lx	8lx	7lx	6lx	6lx	5lx
191.8fcd	48fcd	21.3fcd	12fcd	7.7fcd	5.3fcd	3.9fcd	3fcd	2.4fcd	1.9fcd	1.6fcd	1.3fcd	1.1fcd	1fcd	0.9fcd	0.7fcd	0.7fcd	0.6fcd	0.5fcd	0.5fcd

#### Intensities in 0° c-plane

0°	2°	4°	6°	8°	10°	12°	14°	16°	18°	20°	22°	24°	26°	28°	30°	32°	34°	36°	38°
2065	2052	2016	1961	1888	1800	1699	1579	1422	1235	1035	843	681	556	462	372	273	160	35	10
100%	99%	98%	95%	91%	87%	82%	76%	69%	60%	50%	41%	33%	27%	22%	18%	13%	8%	2%	0%

#### Intensities in 90° c-plane

0°	2°	4°	6°	8°	10°	12°	14°	16°	18°	20°	22°	24°	26°	28°	30°	32°	34°	36°	38°
2065	2054	2020	1964	1892	1804	1697	1568	1413	1231	1032	835	679	553	451	357	248	99	29	6
100%	99%	98%	95%	92%	87%	82%	76%	68%	60%	50%	40%	33%	27%	22%	17%	12%	5%	1%	0%

#### Intensities in 180° c-plane

0°	2°	4°	6°	8°	10°	12°	14°	16°	18°	20°	22°	24°	26°	28°	30°	32°	34°	36°	38°
2065	2054	2019	1962	1892	1802	1696	1565	1410	1233	1035	835	671	540	429	310	143	44	9	4
100%	100%	98%	95%	92%	87%	82%	76%	68%	60%	50%	40%	32%	26%	21%	15%	7%	2%	0%	0%

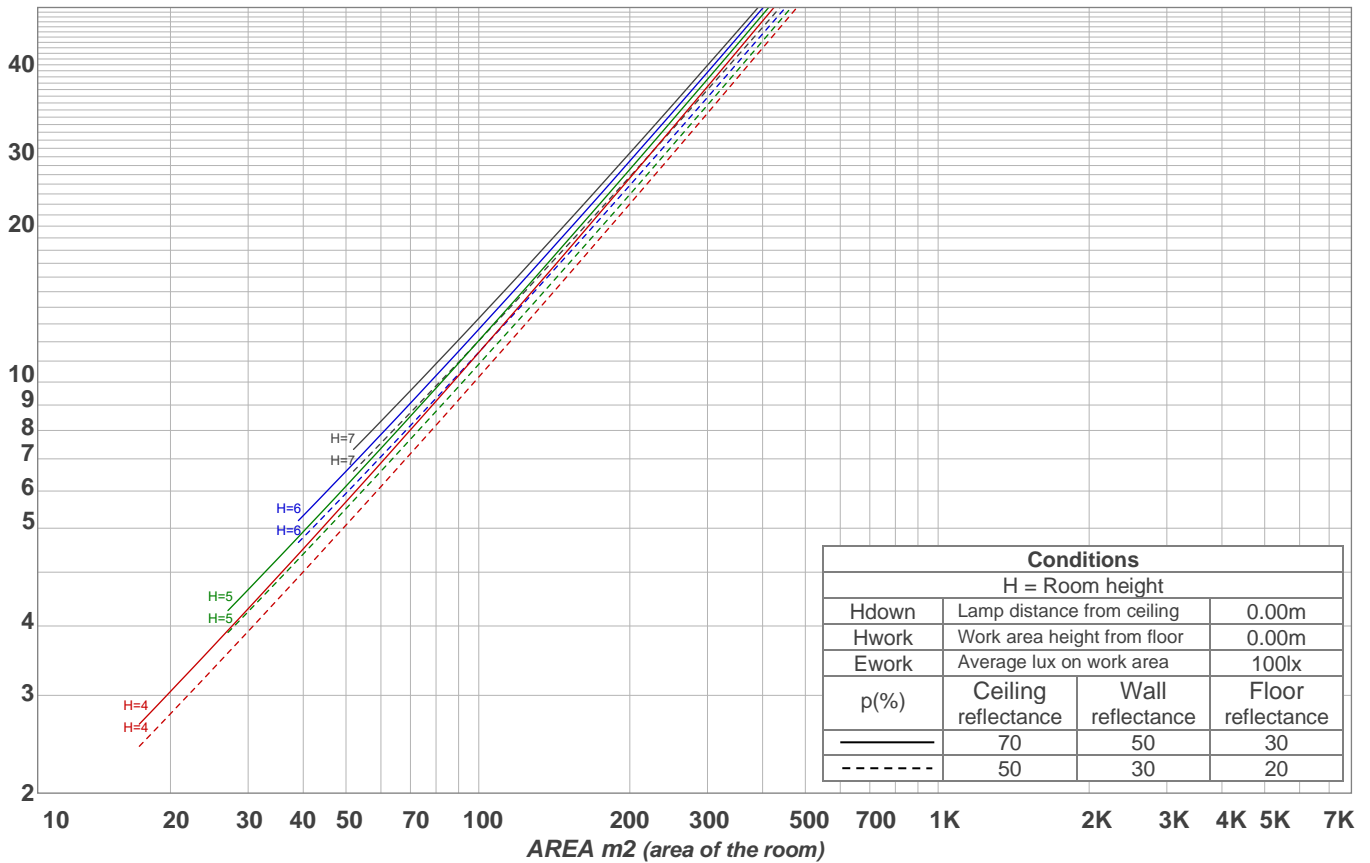
#### Intensities in 270° c-plane

0°	2°	4°	6°	8°	10°	12°	14°	16°	18°	20°	22°	24°	26°	28°	30°	32°	34°	36°	38°
2065	2056	2017	1959	1884	1795	1691	1562	1406	1226	1032	839	675	549	450	350	226	75	16	5
100%	100%	98%	95%	91%	87%	82%	76%	68%	59%	50%	41%	33%	27%	22%	17%	11%	4%	1%	0%

Beam angle 50%	Field angle 10%	Cutoff angle 2,5%	Intensity ratio in 120° cone	Intensity ratio in 90° cone
40°	64.6°	69.8°	99.3%	99.0%

LAMPS (number of lamps)  
50

### Light planning Luminaire budgetary diagram



### Luminaire budgetary diagram AREA m2 (area of the room) Coefficients of Utilization

Ceiling reflectance	80				70				50			30			10			0			
Wall reflectance	70	50	30	10	70	50	30	10	50	30	10	50	30	10	50	30	10	50	30	10	0
Floor reflectance	20	20	20	20	20	20	20	20	20	20	20	20	20	20	20	20	20	20	20	20	0
RCR	(RCR: Room Cavity Ratio)																				
	Room Values are expressed as percentage of Lumens delivered to the task surface																				
0	119	119	119	119	116	116	116	116	111	111	111	106	106	106	102	102	102	100	100	100	
1	114	112	110	108	112	110	108	106	106	104	103	102	101	100	99	98	97	95	95	95	
2	110	106	102	99	108	104	101	98	101	98	96	98	96	94	95	94	92	91	91	91	
3	106	100	96	93	104	99	95	92	96	93	91	94	91	89	92	90	88	87	87	87	
4	102	95	91	87	100	94	90	87	92	89	86	90	87	85	89	86	84	83	83	83	
5	98	91	86	83	96	90	86	82	88	85	82	87	83	81	85	82	80	79	79	79	
6	94	87	82	78	93	86	82	78	85	81	78	83	80	77	82	79	77	76	76	76	
7	91	83	78	75	90	83	78	75	81	77	74	80	77	74	79	76	74	72	72	72	
8	87	80	75	71	86	79	75	71	78	74	71	77	74	71	76	73	71	69	69	69	
9	84	76	72	68	83	76	71	68	75	71	68	74	71	68	74	70	68	67	67	67	
10	81	74	69	66	81	73	69	66	72	68	65	72	68	65	71	68	65	64	64	64	

### Zonal Lumen Summary

0°-10°	10°-20°	20°-30°	30°-40°	40°-50°	50°-60°	60°-70°	70°-80°	80°-90°
184 lm	404 lm	286 lm	59.0 lm	1.91 lm	2.06 lm	1.82 lm	2.21 lm	2.23 lm
90°-100°	100°-110°	110°-120°	120°-130°	130°-140°	140°-150°	150°-160°	160°-170°	170°-180°
0.000 lm	0.000 lm	0.000 lm	0.000 lm	0.000 lm	0.000 lm	0.000 lm	0.000 lm	0.000 lm