

Light efficiency:



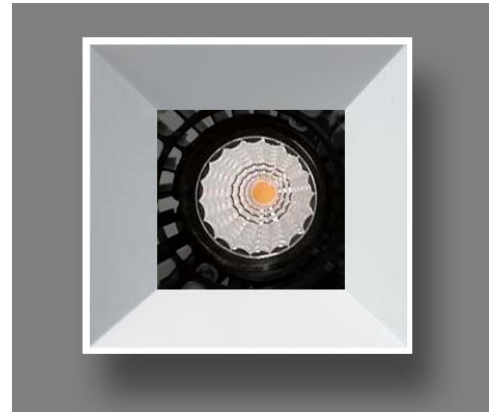
Output: 884 lm

Light quality:

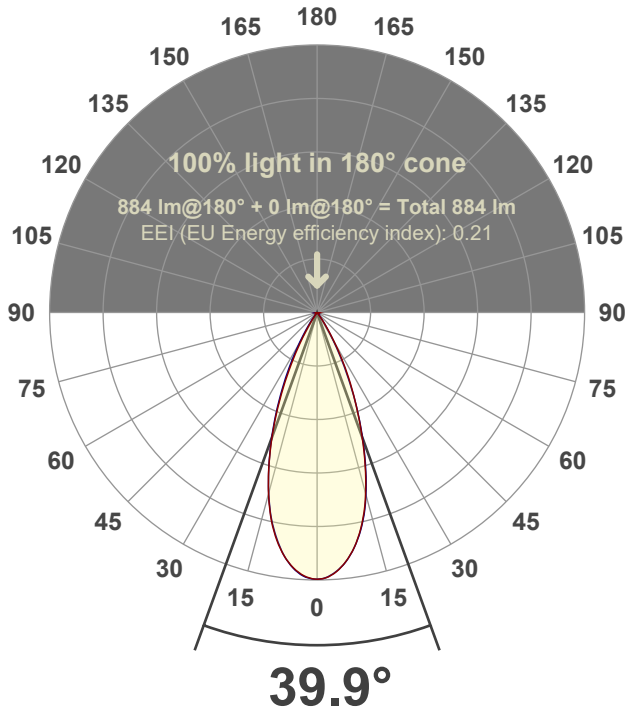


Peak: 1935 cd

Power: 14.6 W



Beam angle



Test number:

GR-O-F-A14-3019-FL-SQ-91A-Rev2

Luminaire Model:

Graffiti Open Square Fixed Downlight-A14-3019 38° Optic-Solite

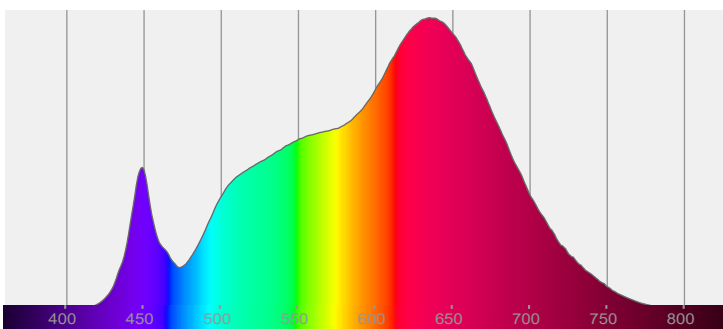
Date and time:

6/30/2022 11:59:33 AM

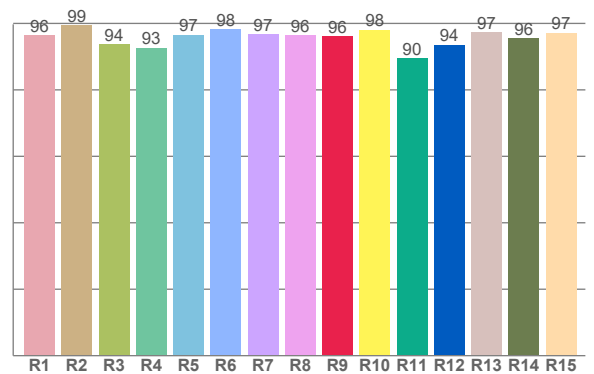
Delivered Lumens

884

Spectra



CRI: 96.3 (R1-R8)



Color parameters

	Color rendering index	Red component	Color fidelity	Color gamut	Color quality scale	Color coordinate cie 1931	Color coordinate cie 1931	Color coordinate	Color coordinate	Color deviation from black body
	CRI	CRI R9	TM30 R <sub>f</sub>	TM30 R <sub>g</sub>	CQS	x	y	u	v	Δuv
	96.3	96.2	95.3	104.2	94.9	0.436	0.402	0.251	0.347	-0.0007

**$R_f$  95.3**

Fidelity index  $R_f$

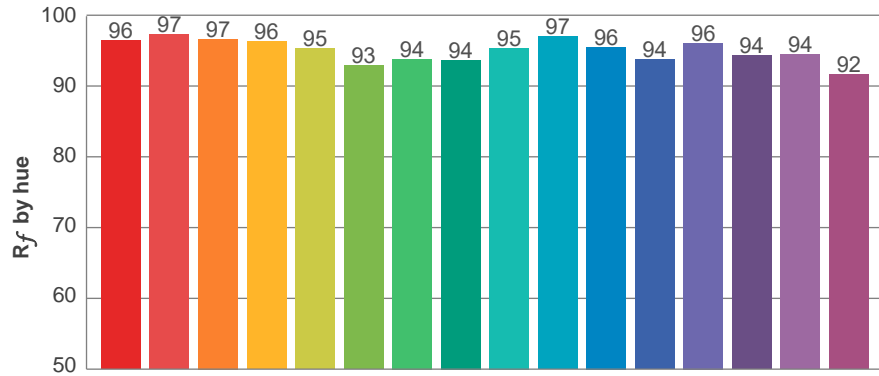
---

**$R_g$  104.2**

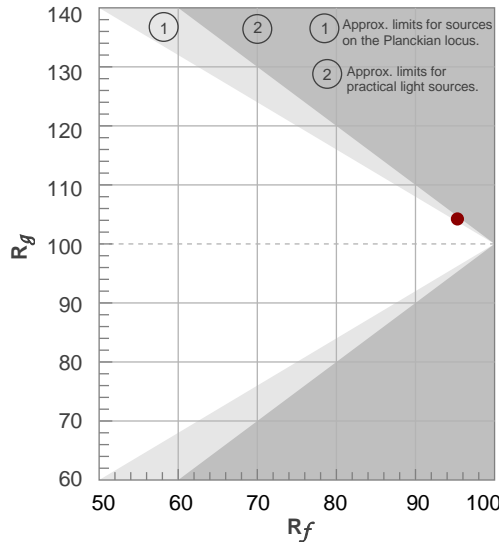
Gammut index  $R_g$

TM30: 95.3

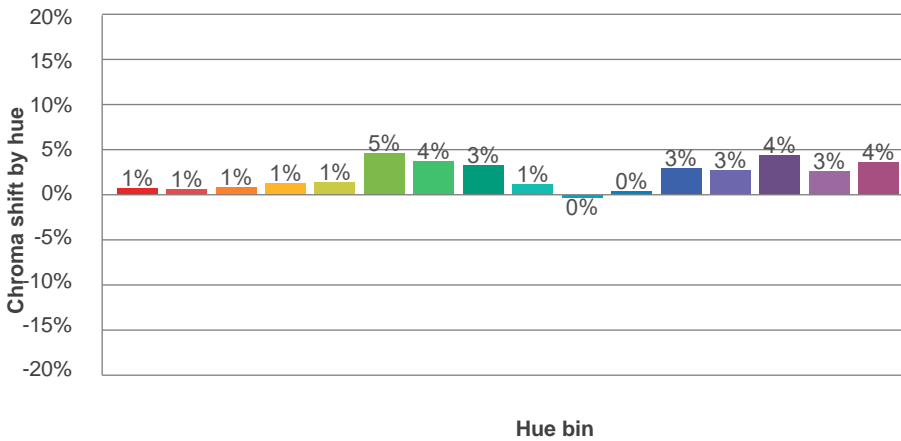
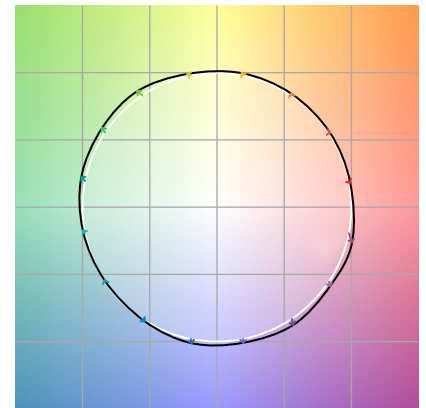
TM-30Color



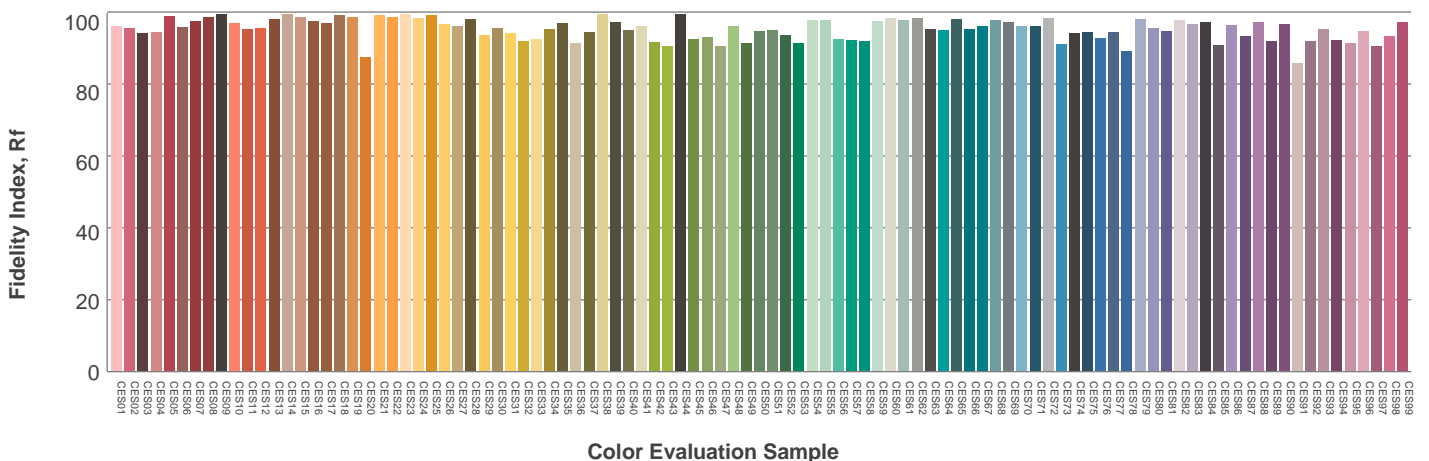
Hue Bin	$R_f$	Graphic shifts (%)	
		Chroma	Hue
1	96	1%	-1%
2	97	1%	-1%
3	97	1%	1%
4	96	1%	1%
5	95	1%	2%
6	93	5%	1%
7	94	4%	-1%
8	94	3%	-2%
9	95	1%	-2%
10	97	0%	-1%
11	96	0%	2%
12	94	3%	1%
13	96	3%	-1%
14	94	4%	-1%
15	94	3%	-2%
16	92	4%	-6%



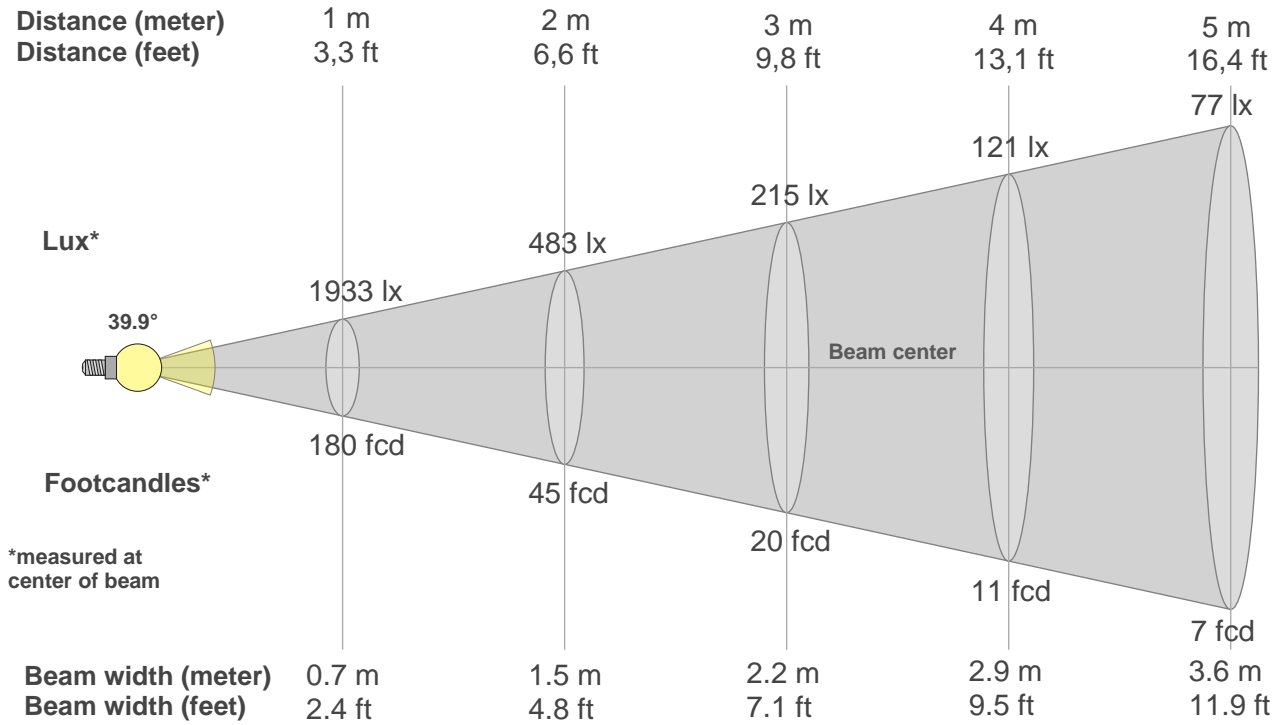
Color vector graphics



Color distortion



### Beam details



#### Beam intensities from 1-20m

1m	2m	3m	4m	5m	6m	7m	8m	9m	10m	11m	12m	13m	14m	15m	16m	17m	18m	19m	20m
3.3ft	6.6ft	9.8ft	13.1ft	16.4ft	19.7ft	23ft	26.2ft	29.5ft	32.8ft	36.1ft	39.4ft	42.7ft	45.9ft	49.2ft	52.5ft	55.8ft	59.1ft	62.3ft	65.6ft
1933lx	483lx	215lx	121lx	77lx	54lx	39lx	30lx	24lx	19lx	16lx	13lx	11lx	10lx	9lx	8lx	7lx	6lx	5lx	5lx
179.6fcd	44.9fcd	20fcd	11.2fcd	7.2fcd	5fcd	3.7fcd	2.8fcd	2.2fcd	1.8fcd	1.5fcd	1.2fcd	1.1fcd	0.9fcd	0.8fcd	0.7fcd	0.6fcd	0.6fcd	0.5fcd	0.4fcd

#### Intensities in 0° c-plane

0°	2°	4°	6°	8°	10°	12°	14°	16°	18°	20°	22°	24°	26°	28°	30°	32°	34°	36°	38°
1933	1926	1891	1837	1765	1676	1566	1438	1285	1123	959	801	654	519	392	278	184	114	65	36
100%	100%	98%	95%	91%	87%	81%	74%	66%	58%	50%	41%	34%	27%	20%	14%	10%	6%	3%	2%

#### Intensities in 90° c-plane

0°	2°	4°	6°	8°	10°	12°	14°	16°	18°	20°	22°	24°	26°	28°	30°	32°	34°	36°	38°
1933	1923	1889	1837	1766	1677	1571	1445	1295	1133	967	804	645	494	359	250	164	104	66	41
100%	99%	98%	95%	91%	87%	81%	75%	67%	59%	50%	42%	33%	26%	19%	13%	8%	5%	3%	2%

#### Intensities in 180° c-plane

0°	2°	4°	6°	8°	10°	12°	14°	16°	18°	20°	22°	24°	26°	28°	30°	32°	34°	36°	38°
1933	1921	1890	1839	1770	1681	1569	1436	1286	1125	959	791	628	475	339	227	141	81	47	28
100%	99%	98%	95%	92%	87%	81%	74%	67%	58%	50%	41%	32%	25%	18%	12%	7%	4%	2%	1%

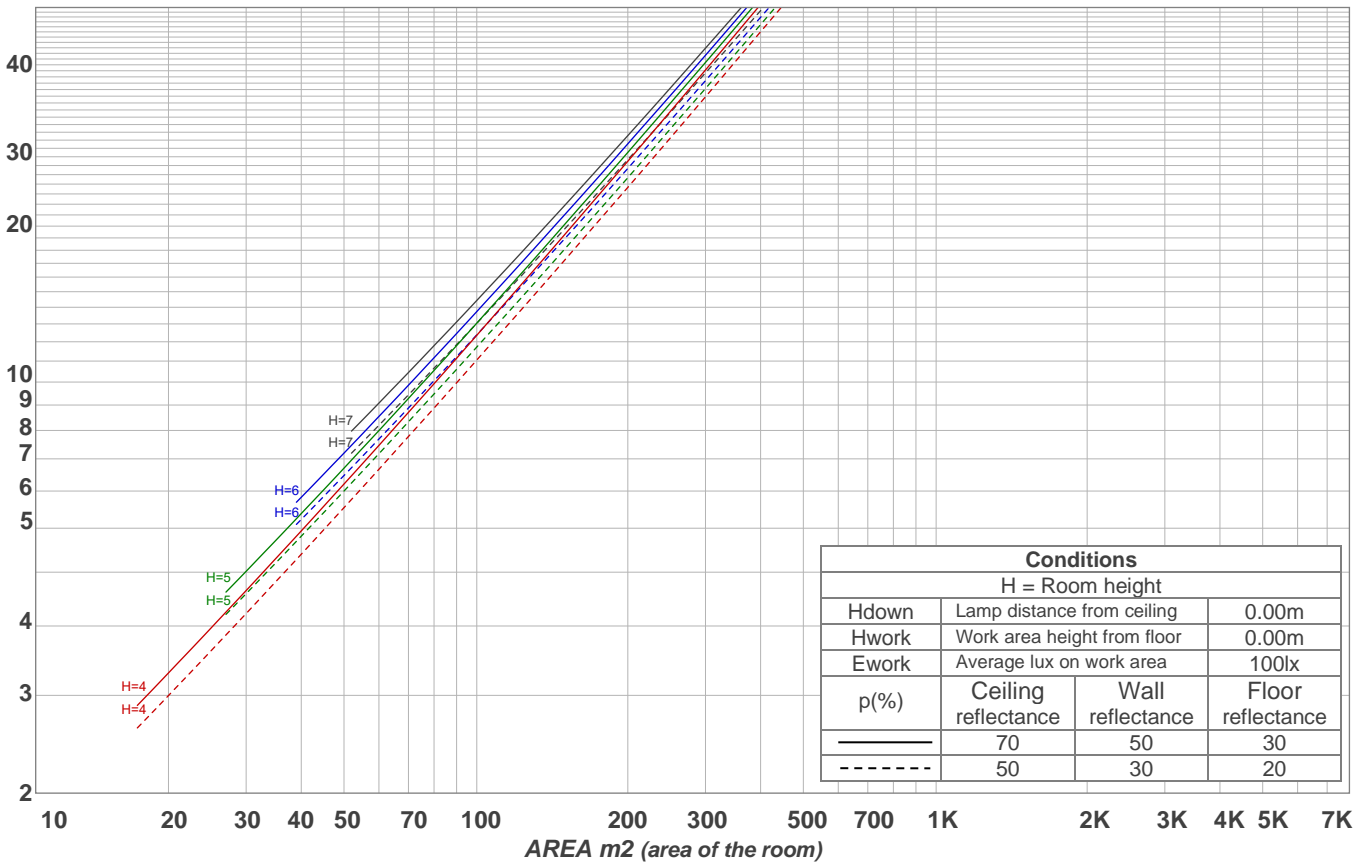
#### Intensities in 270° c-plane

0°	2°	4°	6°	8°	10°	12°	14°	16°	18°	20°	22°	24°	26°	28°	30°	32°	34°	36°	38°
1933	1924	1894	1842	1769	1673	1562	1431	1283	1126	967	809	657	517	390	279	187	121	79	49
100%	100%	98%	95%	92%	87%	81%	74%	66%	58%	50%	42%	34%	27%	20%	14%	10%	6%	4%	3%

Beam angle 50%	Field angle 10%	Cutoff angle 2,5%	Intensity ratio in 120° cone	Intensity ratio in 90° cone
39.9°	62.8°	74.2°	99.1%	98.3%

LAMPS (number of lamps)  
50

### Light planning Luminaire budgetary diagram



### Luminaire budgetary diagram AREA m2 (area of the room) Coefficients of Utilization

Ceiling reflectance	80				70				50			30			10			0			
Wall reflectance	70	50	30	10	70	50	30	10	50	30	10	50	30	10	50	30	10	50	30	10	0
Floor reflectance	20	20	20	20	20	20	20	20	20	20	20	20	20	20	20	20	20	20	20	20	0
RCR	(RCR: Room Cavity Ratio)																				
	Room Values are expressed as percentage of Lumens delivered to the task surface																				
0	119	119	119	119	116	116	116	116	111	111	111	106	106	106	102	102	102	100	100	100	
1	114	112	110	108	112	110	108	106	106	104	103	102	101	100	99	98	97	95	95	95	
2	110	105	102	99	108	104	101	98	101	98	96	98	96	94	95	93	92	90	90	90	
3	105	100	96	92	103	99	95	92	96	93	90	94	91	89	92	89	87	86	86	86	
4	101	95	90	87	100	94	90	86	92	88	85	90	87	84	88	86	83	82	82	82	
5	97	90	86	82	96	90	85	82	88	84	81	86	83	80	85	82	80	78	78	78	
6	94	86	81	78	92	86	81	78	84	80	77	83	79	77	82	79	76	75	75	75	
7	90	83	78	74	89	82	77	74	81	77	74	80	76	73	79	75	73	72	72	72	
8	87	79	74	71	86	79	74	71	78	73	70	77	73	70	76	72	70	69	69	69	
9	84	76	71	68	83	75	71	68	75	70	67	74	70	67	73	70	67	66	66	66	
10	81	73	68	65	80	73	68	65	72	68	65	71	67	64	70	67	64	63	63	63	

### Zonal Lumen Summary

0°-10°	10°-20°	20°-30°	30°-40°	40°-50°	50°-60°	60°-70°	70°-80°	80°-90°
172 lm	371 lm	260 lm	60.6 lm	8.20 lm	3.70 lm	2.96 lm	2.78 lm	2.41 lm
90°-100°	100°-110°	110°-120°	120°-130°	130°-140°	140°-150°	150°-160°	160°-170°	170°-180°
0.000 lm	0.000 lm	0.000 lm	0.000 lm	0.000 lm	0.000 lm	0.000 lm	0.000 lm	0.000 lm