

Light efficiency:



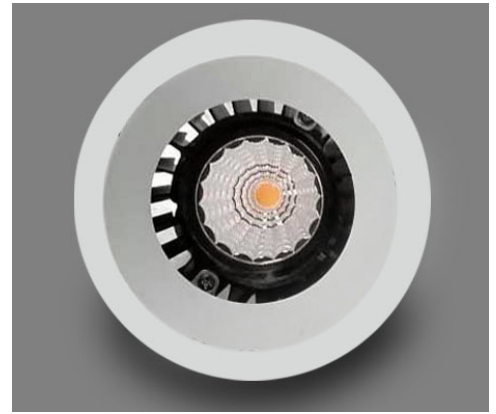
Output: 851 lm

Light quality:

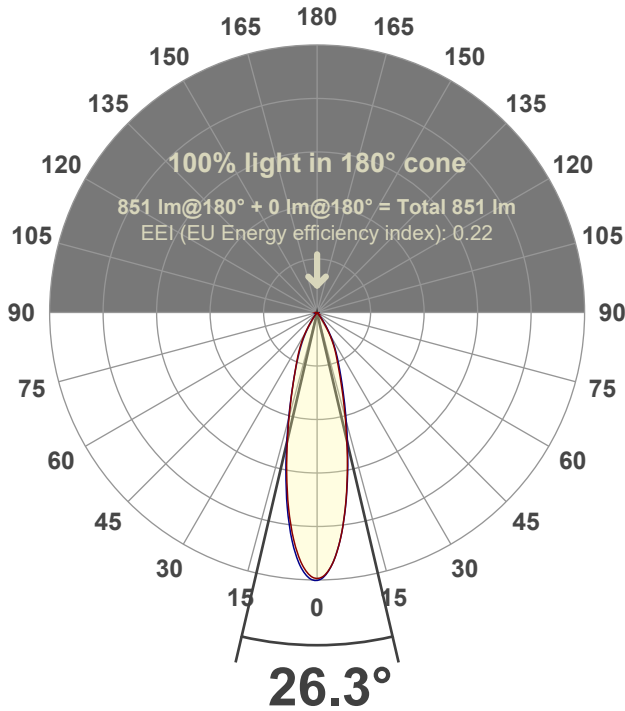


Peak: 2803 cd

Power: 14.7 W



Beam angle



Test number:

GR-O-F-A14-3019-NF-RD-91A-Rev2

Luminaire Model:

Graffiti Open Round Fixed Downlight-A14-3019 24° Optic-Solite

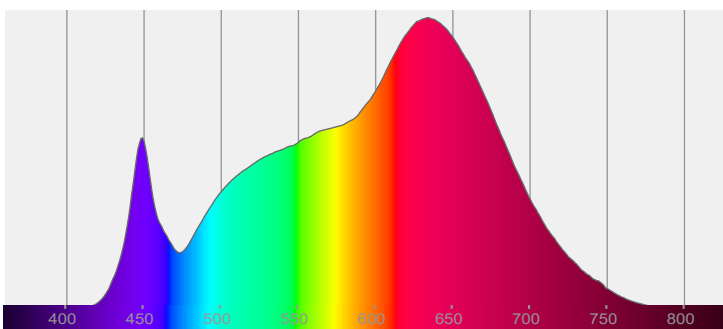
Date and time:

3/24/2022 9:37:30 PM

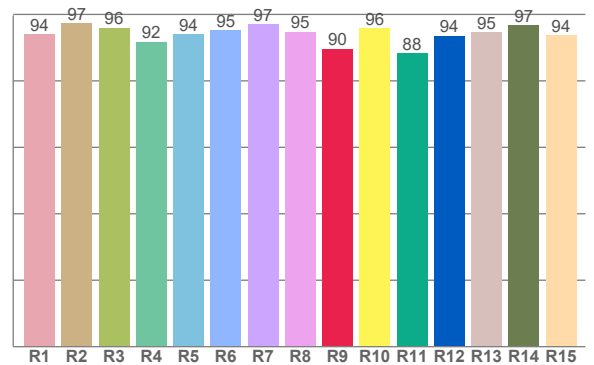
Delivered Lumens

851

Spectra



CRI: 95.0 (R1-R8)



Color parameters

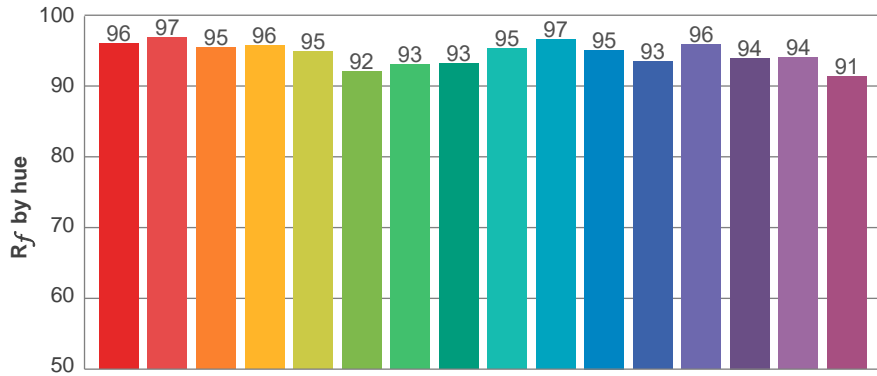
	Color rendering index	Red component	Color fidelity	Color gamut	Color quality scale	Color coordinate cie 1931	Color coordinate cie 1931	Color coordinate	Color coordinate	Color deviation from black body
	CRI	CRI R9	TM30 R _f	TM30 R _g	CQS	x	y	u	v	Δuv
	95.0	89.6	94.8	105.5	95.0	0.423	0.388	0.249	0.342	-0.0046

R_f 94.8
Fidelity index R_f

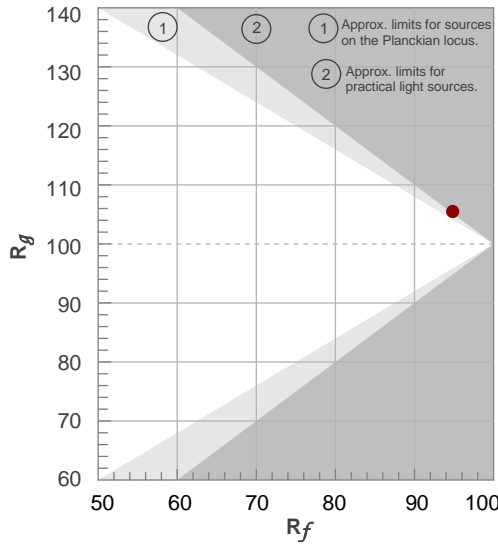
R_g 105.5
Gammut index R_g

TM30: 94.8

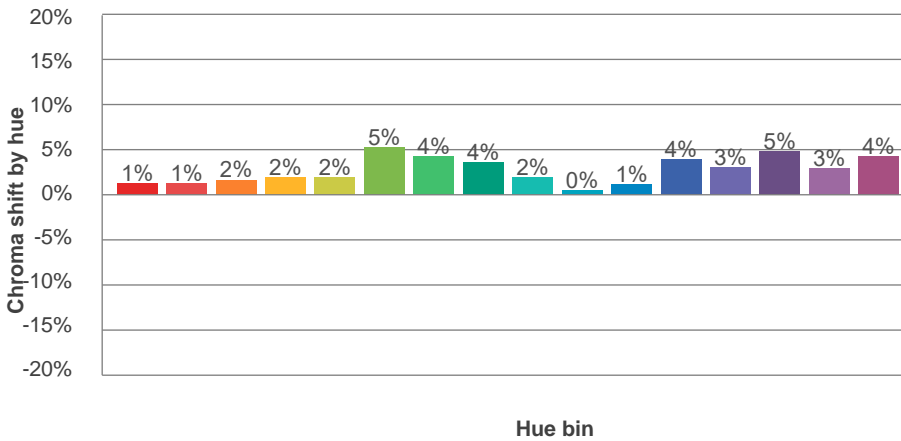
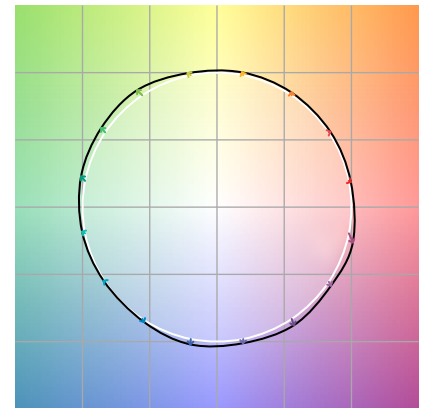
TM-30Color



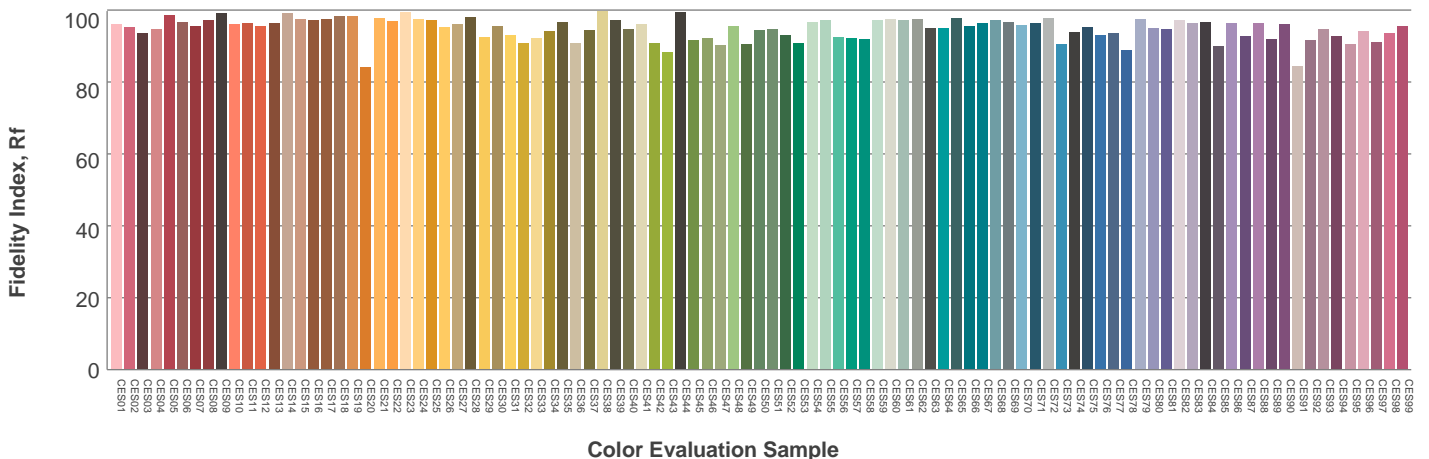
Hue Bin	R_f	Graphic shifts (%)	
		Chroma	Hue
1	96	1%	-1%
2	97	1%	0%
3	95	2%	1%
4	96	2%	1%
5	95	2%	2%
6	92	5%	1%
7	93	4%	-1%
8	93	4%	-3%
9	95	2%	-2%
10	97	0%	-1%
11	95	1%	2%
12	93	4%	0%
13	96	3%	-1%
14	94	5%	-1%
15	94	3%	-1%
16	91	4%	-6%



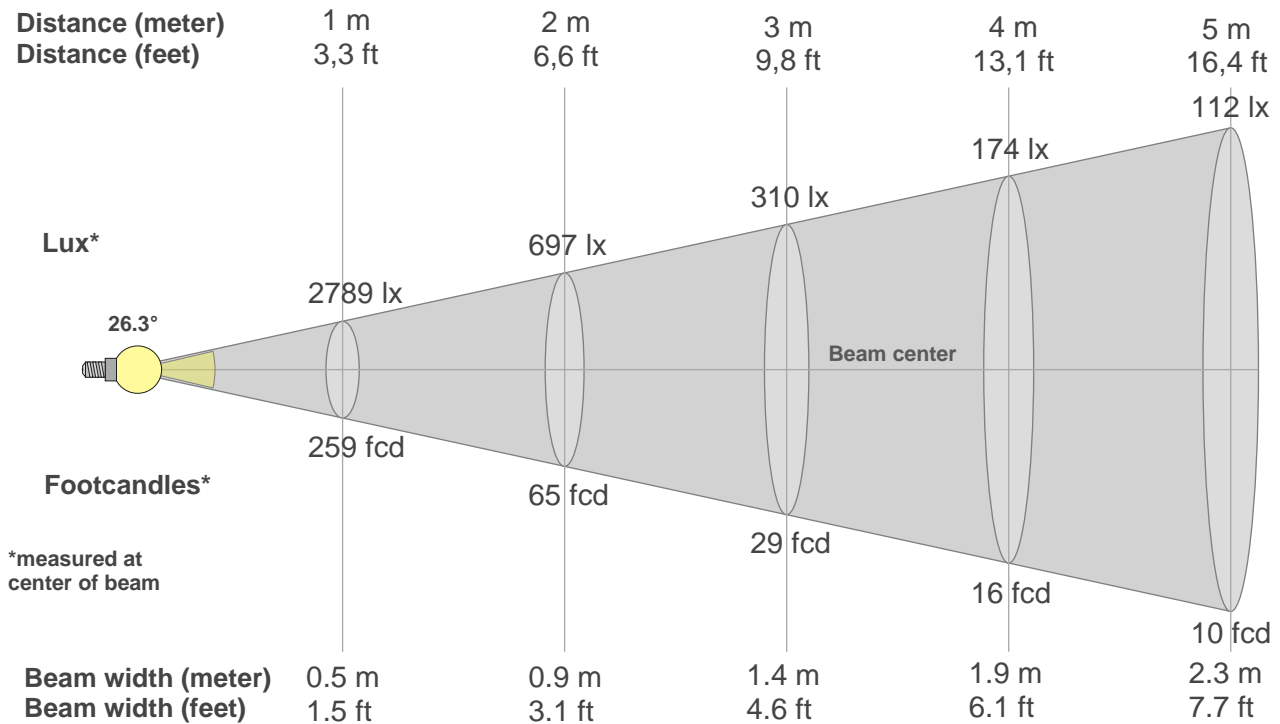
Color vector graphics



Color distortion



Beam details



Beam intensities from 1-20m

1m	2m	3m	4m	5m	6m	7m	8m	9m	10m	11m	12m	13m	14m	15m	16m	17m	18m	19m	20m
3.3ft	6.6ft	9.8ft	13.1ft	16.4ft	19.7ft	23ft	26.2ft	29.5ft	32.8ft	36.1ft	39.4ft	42.7ft	45.9ft	49.2ft	52.5ft	55.8ft	59.1ft	62.3ft	65.6ft
2789lx	697lx	310lx	174lx	112lx	77lx	57lx	44lx	34lx	28lx	23lx	19lx	17lx	14lx	12lx	11lx	10lx	9lx	8lx	7lx
259.1fcd	64.8fcd	28.8fcd	16.2fcd	10.4fcd	7.2fcd	5.3fcd	4fcd	3.2fcd	2.6fcd	2.1fcd	1.8fcd	1.5fcd	1.3fcd	1.2fcd	1fcd	0.9fcd	0.8fcd	0.7fcd	0.6fcd

Intensities in 0° c-plane

0°	2°	4°	6°	8°	10°	12°	14°	16°	18°	20°	22°	24°	26°	28°	30°	32°	34°	36°	38°
2789	2734	2599	2375	2105	1818	1534	1269	1041	856	708	592	500	423	343	269	198	136	87	54
100%	98%	93%	85%	75%	65%	55%	45%	37%	31%	25%	21%	18%	15%	12%	10%	7%	5%	3%	2%

Intensities in 90° c-plane

0°	2°	4°	6°	8°	10°	12°	14°	16°	18°	20°	22°	24°	26°	28°	30°	32°	34°	36°	38°
2789	2737	2592	2377	2111	1831	1561	1311	1087	898	753	633	533	447	369	296	227	166	116	78
100%	98%	93%	85%	76%	66%	56%	47%	39%	32%	27%	23%	19%	16%	13%	11%	8%	6%	4%	3%

Intensities in 180° c-plane

0°	2°	4°	6°	8°	10°	12°	14°	16°	18°	20°	22°	24°	26°	28°	30°	32°	34°	36°	38°
2789	2730	2595	2387	2121	1830	1540	1271	1037	846	701	590	500	420	343	267	197	137	89	55
100%	98%	93%	86%	76%	66%	55%	46%	37%	30%	25%	21%	18%	15%	12%	10%	7%	5%	3%	2%

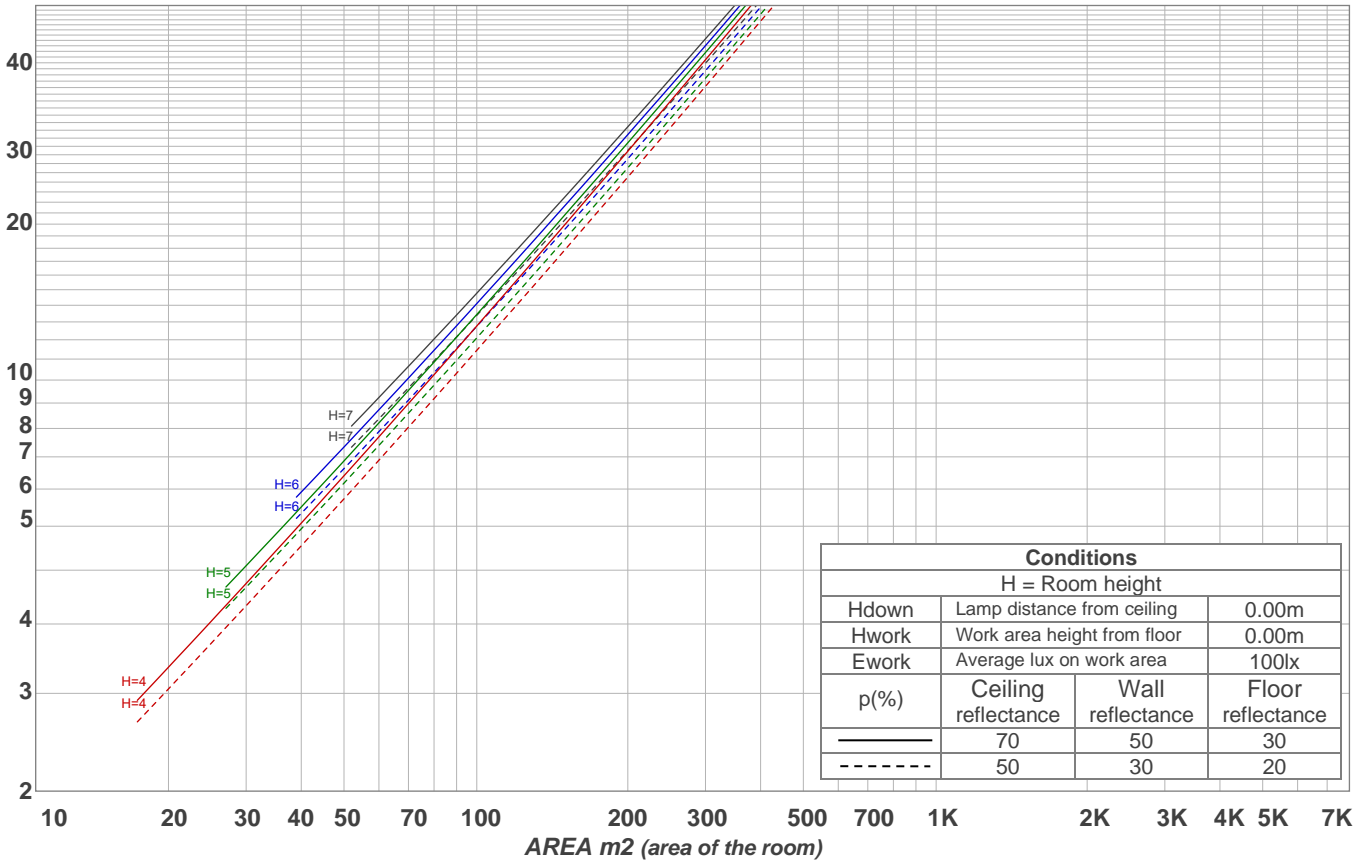
Intensities in 270° c-plane

0°	2°	4°	6°	8°	10°	12°	14°	16°	18°	20°	22°	24°	26°	28°	30°	32°	34°	36°	38°
2789	2770	2652	2442	2174	1878	1578	1297	1049	854	700	576	473	385	307	233	167	115	78	53
100%	99%	95%	88%	78%	67%	57%	46%	38%	31%	25%	21%	17%	14%	11%	8%	6%	4%	3%	2%

Beam angle 50%	Field angle 10%	Cutoff angle 2,5%	Intensity ratio in 120° cone	Intensity ratio in 90° cone
26.3°	59.3°	74.6°	99.2%	98.3%

LAMPS (number of lamps)
50

Light planning Luminaire budgetary diagram



Luminaire budgetary diagram AREA m2 (area of the room) Coefficients of Utilization

Ceiling reflectance	80				70				50			30			10			0			
Wall reflectance	70	50	30	10	70	50	30	10	50	30	10	50	30	10	50	30	10	50	30	10	0
Floor reflectance	20	20	20	20	20	20	20	20	20	20	20	20	20	20	20	20	20	20	20	20	0
RCR	(RCR: Room Cavity Ratio)																				
	Room Values are expressed as percentage of Lumens delivered to the task surface																				
0	119	119	119	119	116	116	116	116	111	111	111	106	106	106	102	102	102	100	100	100	
1	114	112	110	108	112	110	108	106	106	104	103	102	101	100	99	98	97	95	95	95	
2	110	106	102	100	108	104	101	98	101	98	96	98	96	94	95	94	92	91	91	91	
3	106	100	96	93	104	99	95	92	97	93	91	94	92	89	92	90	88	87	87	87	
4	102	96	91	88	100	94	90	87	92	89	86	91	88	85	89	86	84	83	83	83	
5	98	91	86	83	97	90	86	83	89	85	82	87	84	81	86	83	81	79	79	79	
6	94	87	82	79	93	87	82	79	85	81	78	84	80	78	83	80	77	76	76	76	
7	91	84	79	75	90	83	78	75	82	78	75	81	77	75	80	77	74	73	73	73	
8	88	80	76	72	87	80	75	72	79	75	72	78	74	72	77	74	71	70	70	70	
9	85	77	73	69	84	77	72	69	76	72	69	75	72	69	75	71	69	68	68	68	
10	82	75	70	67	81	74	70	67	73	69	67	73	69	66	72	69	66	65	65	65	

Zonal Lumen Summary

0°-10°	10°-20°	20°-30°	30°-40°	40°-50°	50°-60°	60°-70°	70°-80°	80°-90°
218 lm	323 lm	210 lm	76.6 lm	12.5 lm	3.60 lm	2.46 lm	2.42 lm	2.22 lm
90°-100°	100°-110°	110°-120°	120°-130°	130°-140°	140°-150°	150°-160°	160°-170°	170°-180°
0.000 lm	0.000 lm	0.000 lm	0.000 lm	0.000 lm	0.000 lm	0.000 lm	0.000 lm	0.000 lm