

Light efficiency:



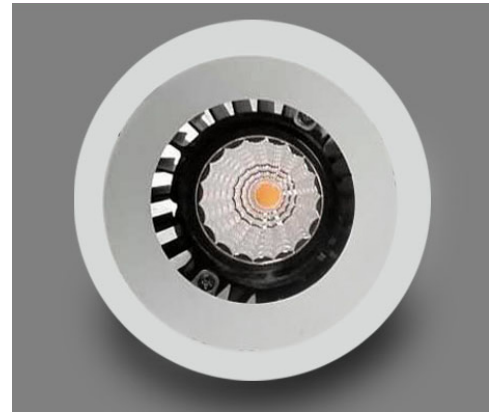
Output: 853 lm

Light quality:

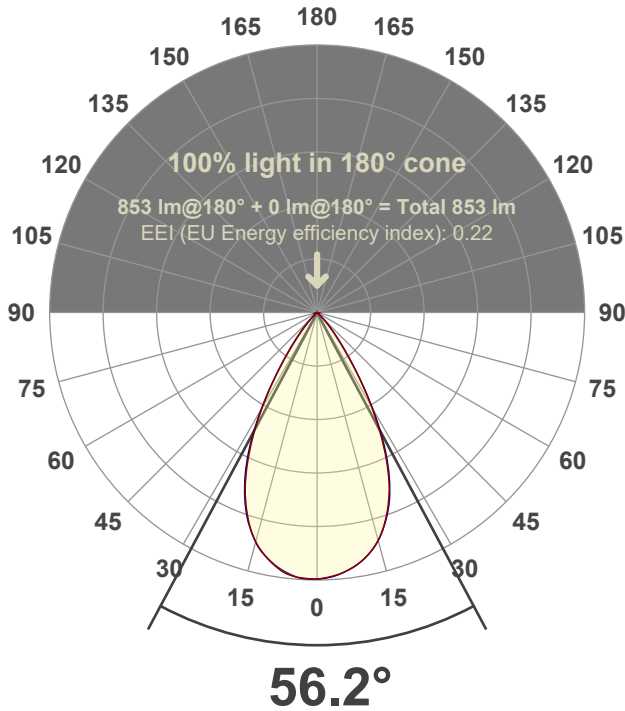


Peak: 1046 cd

Power: 14.6 W



Beam angle



Test number:

GR-O-F-A14-3019-WF-RD-91A-Rev2

Luminaire Model:

Graffiti Open Round Fixed Downlight-A14-3019 60° Optic-Solite

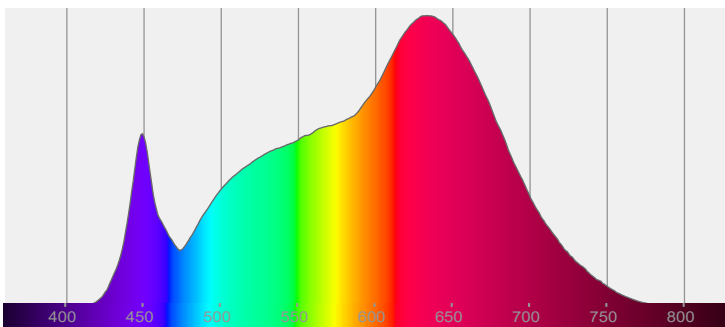
Date and time:

3/24/2022 10:09:57 PM

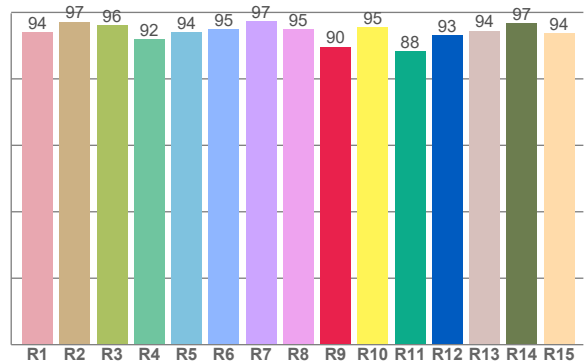
Delivered Lumens

853

Spectra



CRI: 95.0 (R1-R8)



Color parameters

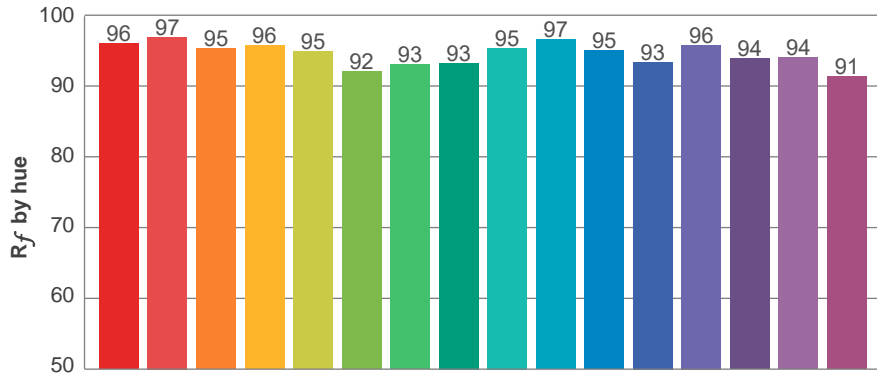
	Color rendering index	Red component	Color fidelity	Color gamut	Color quality scale	Color coordinate cie 1931	Color coordinate cie 1931	Color coordinate	Color coordinate	Color deviation from black body
	CRI	CRI R9	TM30 R _f	TM30 R _g	CQS	x	y	u	v	Δuv
	95.0	89.6	94.8	105.5	95.0	0.423	0.387	0.249	0.342	-0.0049

R_f 94.8
Fidelity index R_f

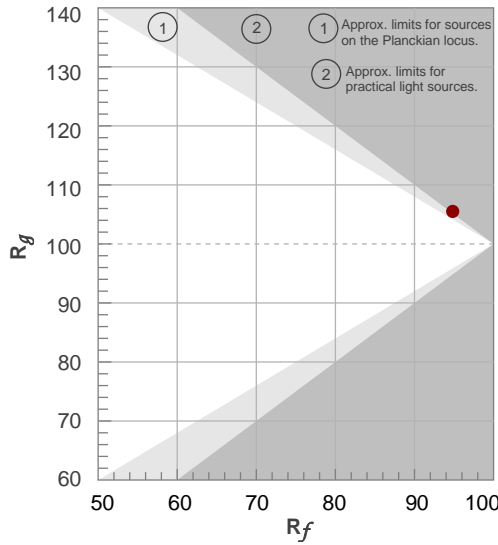
R_g 105.5
Gammut index R_g

TM30: 94.8

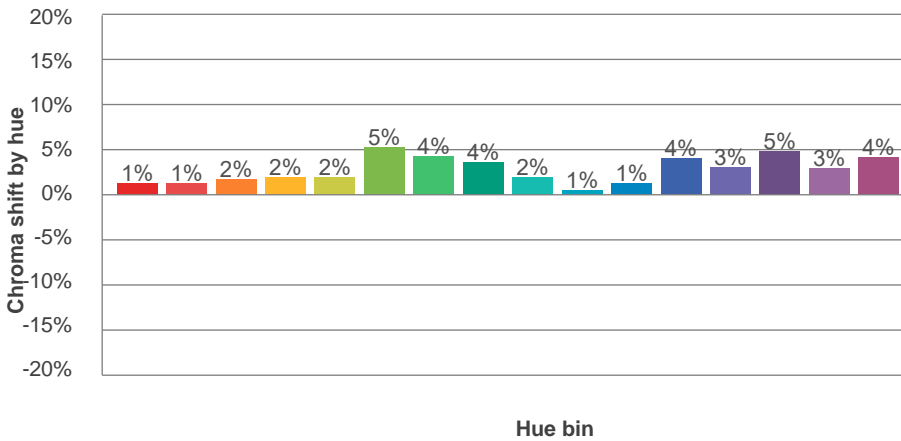
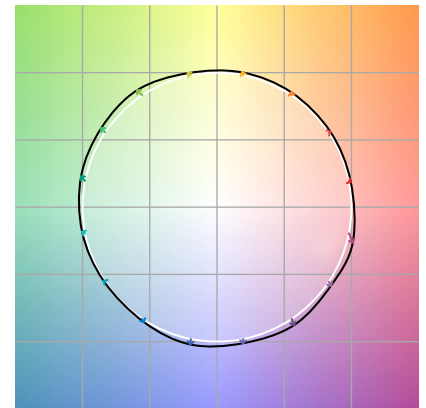
TM-30Color



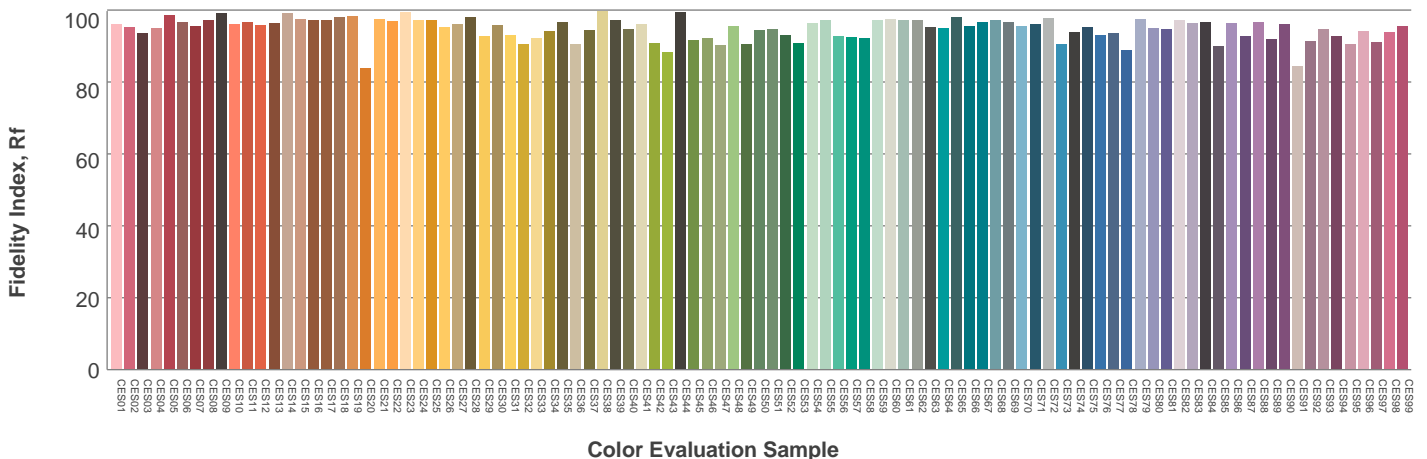
Hue Bin	R_f	Graphic shifts (%)	
		Chroma	Hue
1	96	1%	-1%
2	97	1%	0%
3	95	2%	1%
4	96	2%	1%
5	95	2%	2%
6	92	5%	1%
7	93	4%	-1%
8	93	4%	-3%
9	95	2%	-2%
10	97	1%	-1%
11	95	1%	2%
12	93	4%	0%
13	96	3%	-1%
14	94	5%	-1%
15	94	3%	-1%
16	91	4%	-6%



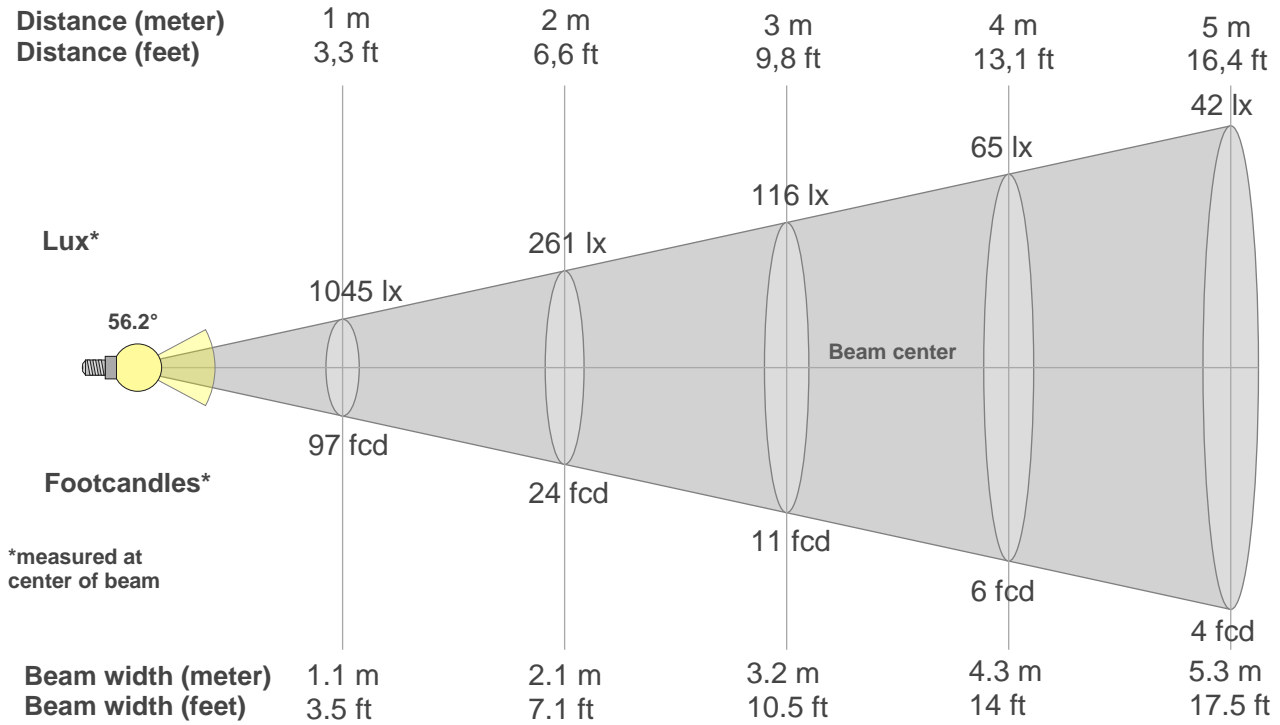
Color vector graphics



Color distortion



Beam details



Beam intensities from 1-20m

1m	2m	3m	4m	5m	6m	7m	8m	9m	10m	11m	12m	13m	14m	15m	16m	17m	18m	19m	20m
3.3ft	6.6ft	9.8ft	13.1ft	16.4ft	19.7ft	23ft	26.2ft	29.5ft	32.8ft	36.1ft	39.4ft	42.7ft	45.9ft	49.2ft	52.5ft	55.8ft	59.1ft	62.3ft	65.6ft
1045lx	261lx	116lx	65lx	42lx	29lx	21lx	16lx	13lx	10lx	9lx	7lx	6lx	5lx	5lx	4lx	4lx	3lx	3lx	3lx
97.1fcd	24.3fcd	10.8fcd	6.1fcd	3.9fcd	2.7fcd	2fcd	1.5fcd	1.2fcd	1fcd	0.8fcd	0.7fcd	0.6fcd	0.5fcd	0.4fcd	0.4fcd	0.3fcd	0.3fcd	0.3fcd	0.2fcd

Intensities in 0° c-plane

0°	2°	4°	6°	8°	10°	12°	14°	16°	18°	20°	22°	24°	26°	28°	30°	32°	34°	36°	38°
1045	1040	1033	1023	1010	993	970	941	906	863	813	755	686	608	523	434	349	270	203	149
100%	100%	99%	98%	97%	95%	93%	90%	87%	83%	78%	72%	66%	58%	50%	42%	33%	26%	19%	14%

Intensities in 90° c-plane

0°	2°	4°	6°	8°	10°	12°	14°	16°	18°	20°	22°	24°	26°	28°	30°	32°	34°	36°	38°
1045	1042	1035	1024	1010	992	969	943	908	866	818	761	695	619	532	441	351	267	196	143
100%	100%	99%	98%	97%	95%	93%	90%	87%	83%	78%	73%	67%	59%	51%	42%	34%	26%	19%	14%

Intensities in 180° c-plane

0°	2°	4°	6°	8°	10°	12°	14°	16°	18°	20°	22°	24°	26°	28°	30°	32°	34°	36°	38°
1045	1045	1042	1035	1021	1001	977	948	911	866	814	755	684	606	523	437	352	275	210	156
100%	100%	100%	99%	98%	96%	93%	91%	87%	83%	78%	72%	65%	58%	50%	42%	34%	26%	20%	15%

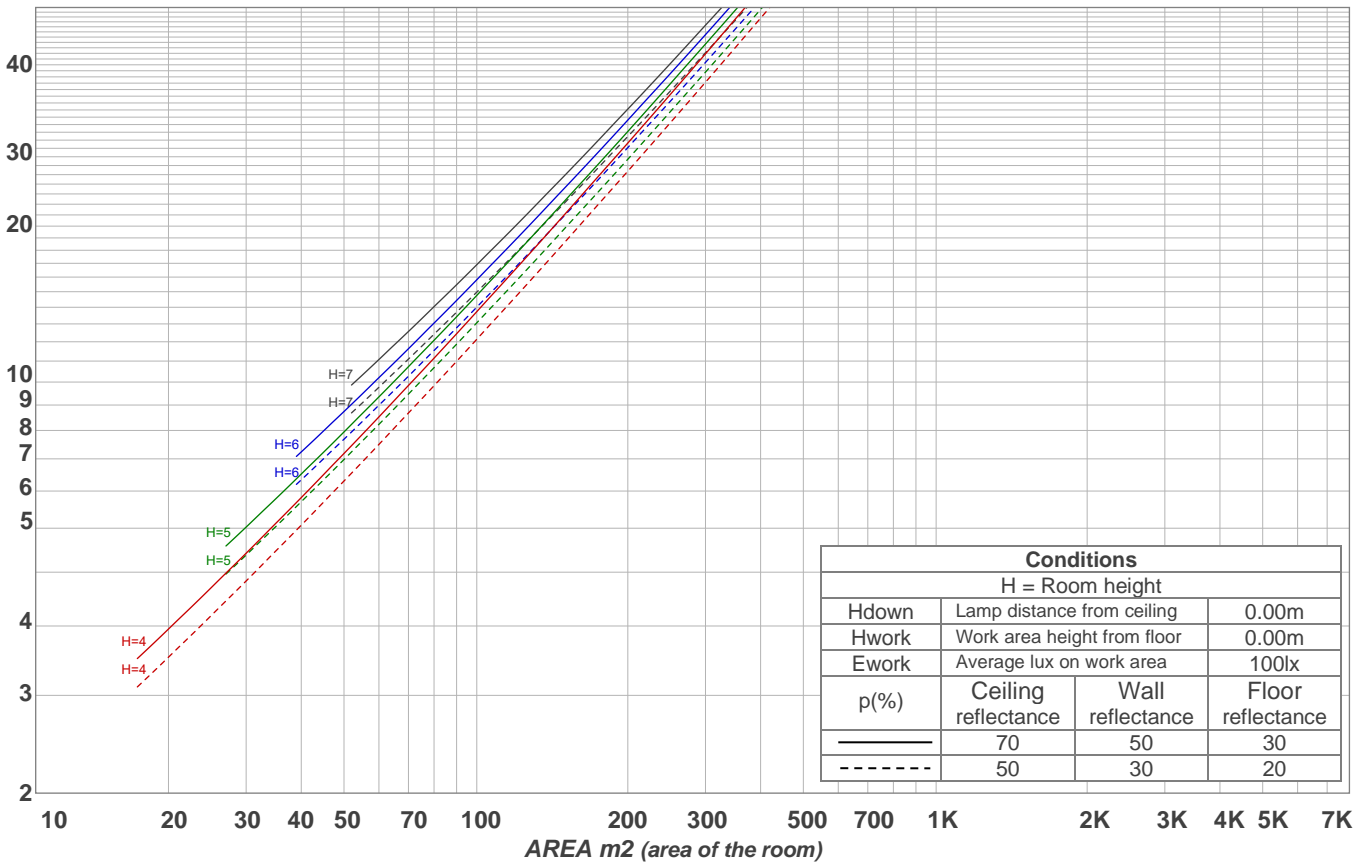
Intensities in 270° c-plane

0°	2°	4°	6°	8°	10°	12°	14°	16°	18°	20°	22°	24°	26°	28°	30°	32°	34°	36°	38°
1045	1045	1043	1032	1017	999	976	950	912	869	819	760	694	618	532	443	355	271	200	145
100%	100%	100%	99%	97%	96%	93%	91%	87%	83%	78%	73%	66%	59%	51%	42%	34%	26%	19%	14%

Beam angle 50%	Field angle 10%	Cutoff angle 2,5%	Intensity ratio in 120° cone	Intensity ratio in 90° cone
56.2°	80.3°	95.3°	99.0%	96.8%

LAMPS (number of lamps)
50

Light planning Luminaire budgetary diagram



Luminaire budgetary diagram AREA m2 (area of the room) Coefficients of Utilization

Ceiling reflectance	80				70				50			30			10			0			
Wall reflectance	70	50	30	10	70	50	30	10	50	30	10	50	30	10	50	30	10	50	30	10	0
Floor reflectance	20	20	20	20	20	20	20	20	20	20	20	20	20	20	20	20	20	20	20	20	0
RCR	(RCR: Room Cavity Ratio)																				
	Room Values are expressed as percentage of Lumens delivered to the task surface																				
0	119	119	119	119	116	116	116	116	111	111	111	106	106	106	102	102	102	100	100	100	100
1	114	111	108	106	111	109	106	104	105	103	101	101	99	98	97	96	95	94	94	94	94
2	108	103	99	96	106	102	98	95	98	95	93	95	93	91	93	91	89	87	87	87	87
3	103	97	92	88	101	95	91	87	93	89	86	90	87	84	88	85	83	82	82	82	82
4	98	91	85	81	96	89	84	81	87	83	80	85	82	79	83	80	78	76	76	76	76
5	93	85	79	75	92	84	79	75	82	78	74	81	77	74	79	76	73	71	71	71	71
6	89	80	74	70	87	79	74	70	78	73	69	76	72	69	75	71	68	67	67	67	67
7	85	76	70	66	83	75	69	65	74	69	65	72	68	65	71	67	64	63	63	63	63
8	81	71	66	62	79	71	65	61	70	65	61	69	64	61	68	64	61	59	59	59	59
9	77	68	62	58	76	67	62	58	66	61	58	65	61	57	64	60	57	56	56	56	56
10	74	64	58	55	73	64	58	55	63	58	54	62	58	54	61	57	54	53	53	53	53

Zonal Lumen Summary

0°-10°	10°-20°	20°-30°	30°-40°	40°-50°	50°-60°	60°-70°	70°-80°	80°-90°
97.5 lm	258 lm	293 lm	151 lm	37.2 lm	7.68 lm	3.57 lm	2.64 lm	2.14 lm
90°-100°	100°-110°	110°-120°	120°-130°	130°-140°	140°-150°	150°-160°	160°-170°	170°-180°
0.000 lm	0.000 lm	0.000 lm	0.000 lm	0.000 lm	0.000 lm	0.000 lm	0.000 lm	0.000 lm