

Light efficiency:



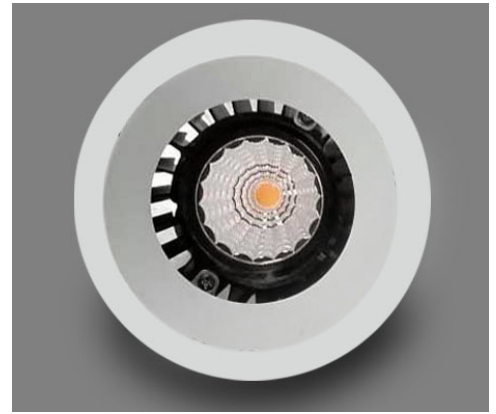
Output: 908 lm

Light quality:

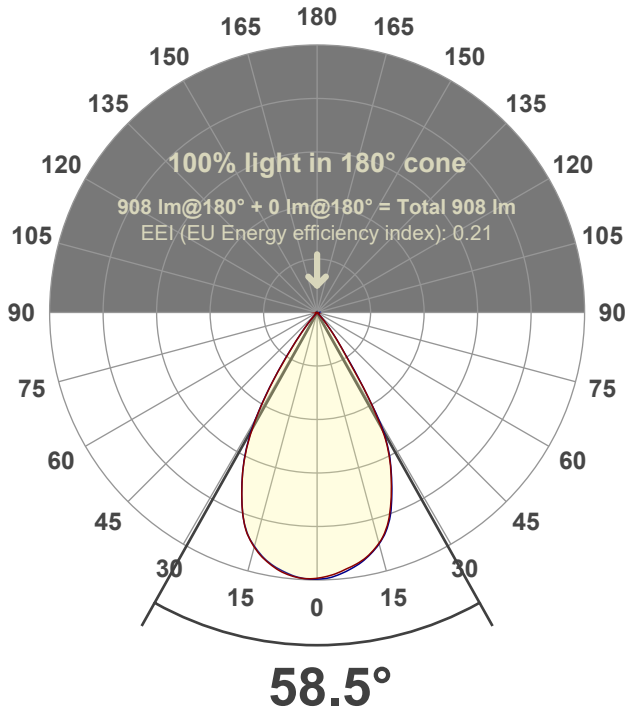


Peak: 1148 cd

Power: 14.6 W



Beam angle



Test number:

GR-O-F-A14-3019-WF-RD-Rev2

Luminaire Model:

Graffiti Open Round Fixed Downlight-A14-3019 60° Optic

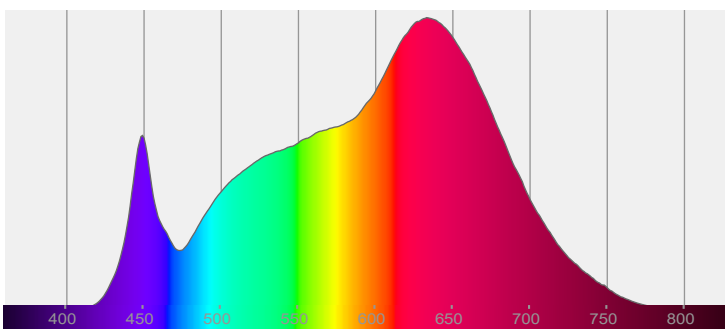
Date and time:

3/24/2022 10:02:55 PM

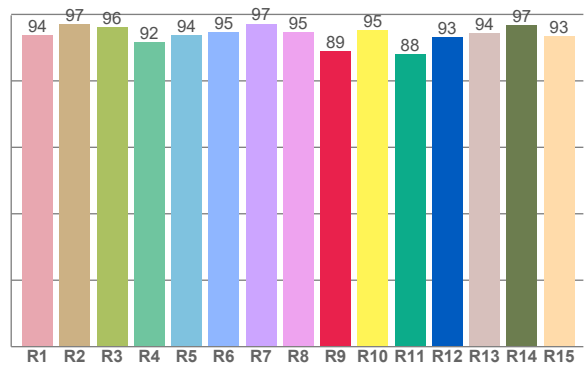
Delivered Lumens

908

Spectra



CRI: 94.9 (R1-R8)



Color parameters

	Color rendering index	Red component	Color fidelity	Color gamut	Color quality scale	Color coordinate cie 1931	Color coordinate cie 1931	Color coordinate	Color coordinate	Color deviation from black body
	CRI	CRI R9	TM30 R <sub>f</sub>	TM30 R <sub>g</sub>	CQS	x	y	u	v	Δuv
	94.9	89.0	94.8	105.6	95.0	0.422	0.387	0.249	0.341	-0.0050

# R<sub>f</sub> 94.8

Fidelity index R<sub>f</sub>

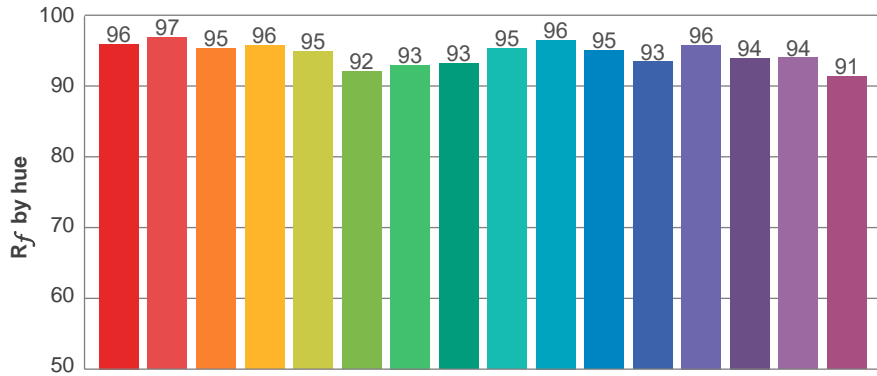
---

# R<sub>g</sub> 105.6

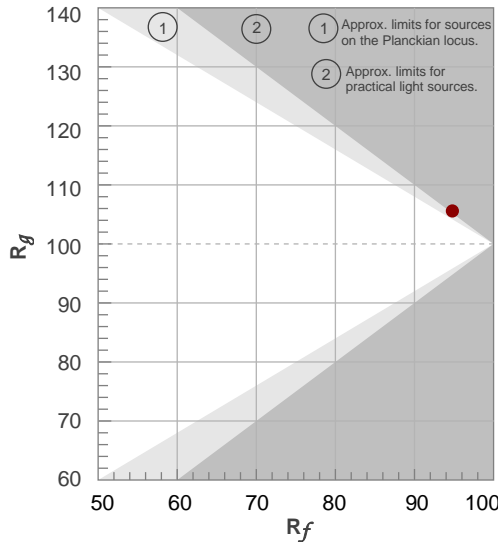
Gammut index R<sub>g</sub>

TM30: 94.8

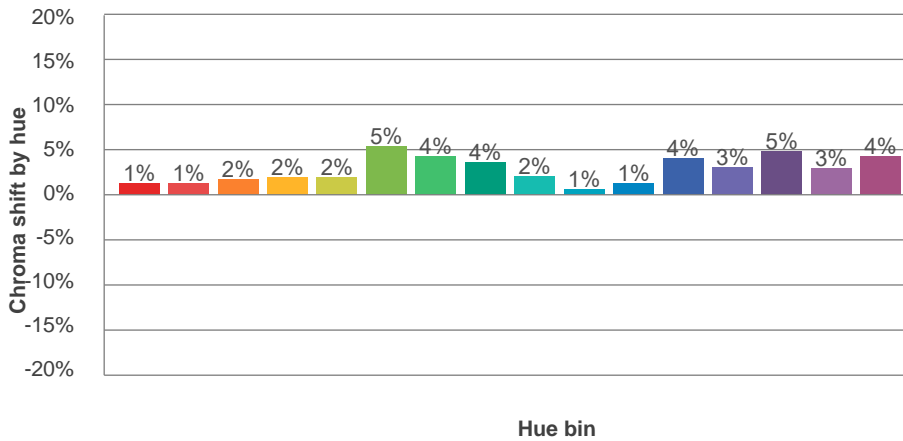
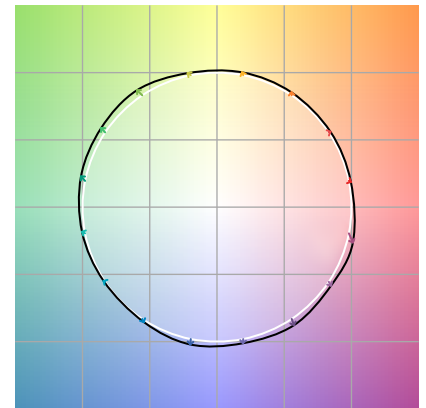
TM-30Color



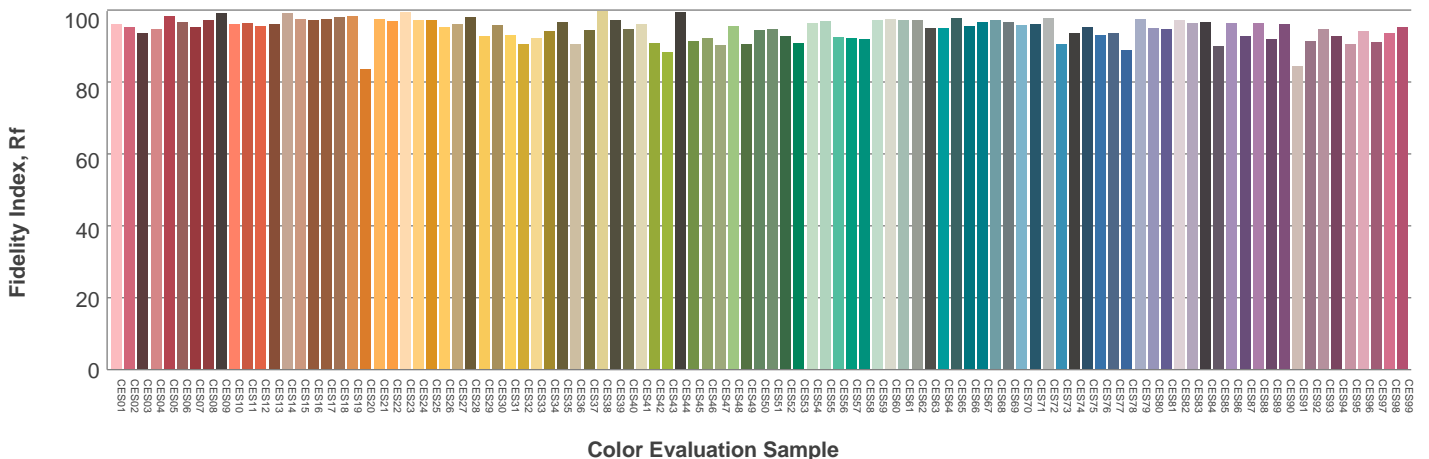
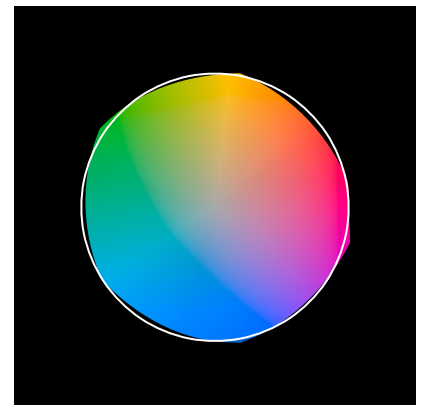
Hue Bin	R <sub>f</sub>	Graphic shifts (%)	
		Chroma	Hue
1	96	1%	-1%
2	97	1%	0%
3	95	2%	1%
4	96	2%	1%
5	95	2%	2%
6	92	5%	1%
7	93	4%	-1%
8	93	4%	-3%
9	95	2%	-2%
10	96	1%	-1%
11	95	1%	2%
12	93	4%	0%
13	96	3%	-1%
14	94	5%	-1%
15	94	3%	-1%
16	91	4%	-6%



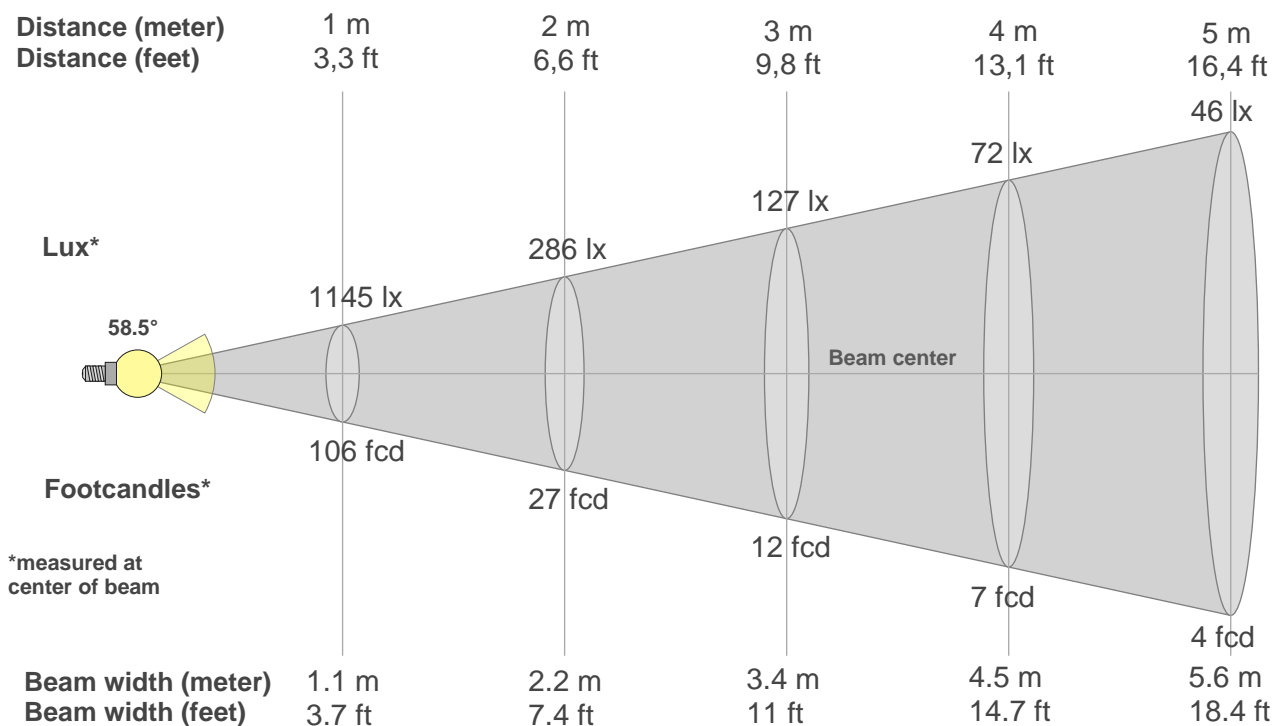
Color vector graphics



Color distortion



### Beam details



#### Beam intensities from 1-20m

1m	2m	3m	4m	5m	6m	7m	8m	9m	10m	11m	12m	13m	14m	15m	16m	17m	18m	19m	20m
3.3ft	6.6ft	9.8ft	13.1ft	16.4ft	19.7ft	23ft	26.2ft	29.5ft	32.8ft	36.1ft	39.4ft	42.7ft	45.9ft	49.2ft	52.5ft	55.8ft	59.1ft	62.3ft	65.6ft
1145lx	286lx	127lx	72lx	46lx	32lx	23lx	18lx	14lx	11lx	9lx	8lx	7lx	6lx	5lx	4lx	4lx	4lx	3lx	3lx
106.4fcd	26.6fcd	11.8fcd	6.7fcd	4.3fcd	3fcd	2.2fcd	1.7fcd	1.3fcd	1.1fcd	0.9fcd	0.7fcd	0.6fcd	0.5fcd	0.5fcd	0.4fcd	0.4fcd	0.3fcd	0.3fcd	0.3fcd

#### Intensities in 0° c-plane

0°	2°	4°	6°	8°	10°	12°	14°	16°	18°	20°	22°	24°	26°	28°	30°	32°	34°	36°	38°
1145	1137	1128	1114	1102	1087	1068	1043	1012	970	916	853	786	718	634	515	369	224	156	103
100%	99%	98%	97%	96%	95%	93%	91%	88%	85%	80%	74%	69%	63%	55%	45%	32%	20%	14%	9%

#### Intensities in 90° c-plane

0°	2°	4°	6°	8°	10°	12°	14°	16°	18°	20°	22°	24°	26°	28°	30°	32°	34°	36°	38°
1145	1144	1136	1124	1109	1093	1071	1045	1015	976	926	860	792	721	641	537	368	238	155	104
100%	100%	99%	98%	97%	95%	93%	91%	89%	85%	81%	75%	69%	63%	56%	47%	32%	21%	14%	9%

#### Intensities in 180° c-plane

0°	2°	4°	6°	8°	10°	12°	14°	16°	18°	20°	22°	24°	26°	28°	30°	32°	34°	36°	38°
1145	1146	1144	1137	1125	1108	1087	1061	1028	989	932	866	795	721	635	529	410	290	186	116
100%	100%	100%	99%	98%	97%	95%	93%	90%	86%	81%	76%	69%	63%	55%	46%	36%	25%	16%	10%

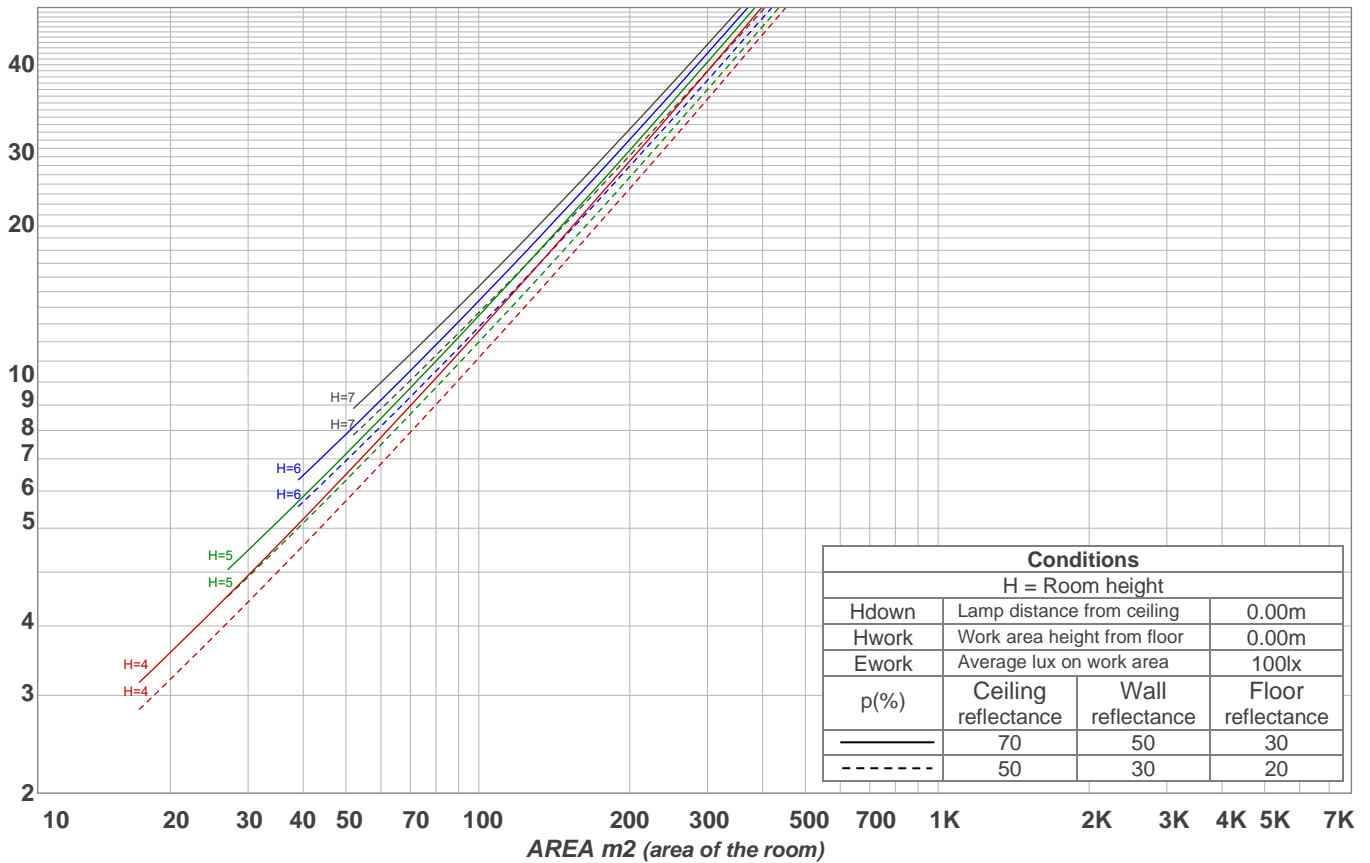
#### Intensities in 270° c-plane

0°	2°	4°	6°	8°	10°	12°	14°	16°	18°	20°	22°	24°	26°	28°	30°	32°	34°	36°	38°
1145	1147	1142	1133	1120	1104	1084	1057	1025	985	933	867	796	722	637	537	414	291	188	114
100%	100%	100%	99%	98%	96%	95%	92%	90%	86%	81%	76%	70%	63%	56%	47%	36%	25%	16%	10%

Beam angle 50%	Field angle 10%	Cutoff angle 2,5%	Intensity ratio in 120° cone	Intensity ratio in 90° cone
58.5°	75.5°	86.7°	99.5%	99.0%

LAMPS (number of lamps)  
50

### Light planning Luminaire budgetary diagram



### Luminaire budgetary diagram AREA m2 (area of the room) Coefficients of Utilization

Ceiling reflectance	80				70				50			30			10			0			
Wall reflectance	70	50	30	10	70	50	30	10	50	30	10	50	30	10	50	30	10	50	30	10	0
Floor reflectance	20	20	20	20	20	20	20	20	20	20	20	20	20	20	20	20	20	20	20	20	0
RCR	(RCR: Room Cavity Ratio)																				
	Room Values are expressed as percentage of Lumens delivered to the task surface																				
0	119	119	119	119	116	116	116	116	111	111	111	106	106	106	102	102	102	100	100	100	
1	114	111	109	107	111	109	107	105	105	103	102	101	100	99	98	97	96	94	94	94	
2	109	104	100	97	106	102	99	96	99	96	94	96	94	92	93	92	90	88	88	88	
3	104	98	93	89	102	96	92	89	94	90	87	91	88	86	89	87	84	83	83	83	
4	99	92	87	83	97	91	86	82	89	84	81	87	83	80	85	82	79	78	78	78	
5	94	87	81	77	93	86	81	77	84	79	76	82	78	75	81	77	75	73	73	73	
6	90	82	76	72	89	81	76	72	79	75	71	78	74	71	77	73	70	69	69	69	
7	86	77	72	68	85	77	71	67	75	71	67	74	70	67	73	69	66	65	65	65	
8	82	73	68	64	81	73	67	64	72	67	63	71	66	63	70	66	63	62	62	62	
9	78	69	64	60	77	69	64	60	68	63	60	67	63	60	66	62	59	58	58	58	
10	75	66	60	57	74	66	60	57	65	60	57	64	60	56	63	59	56	55	55	55	

### Zonal Lumen Summary

0°-10°	10°-20°	20°-30°	30°-40°	40°-50°	50°-60°	60°-70°	70°-80°	80°-90°
107 lm	289 lm	342 lm	147 lm	17.1 lm	1.42 lm	1.30 lm	1.48 lm	1.72 lm
90°-100°	100°-110°	110°-120°	120°-130°	130°-140°	140°-150°	150°-160°	160°-170°	170°-180°
0.000 lm	0.000 lm	0.000 lm	0.000 lm	0.000 lm	0.000 lm	0.000 lm	0.000 lm	0.000 lm