

Light efficiency:

58 Lumen/Watt

Light quality:

CRI: 96.1

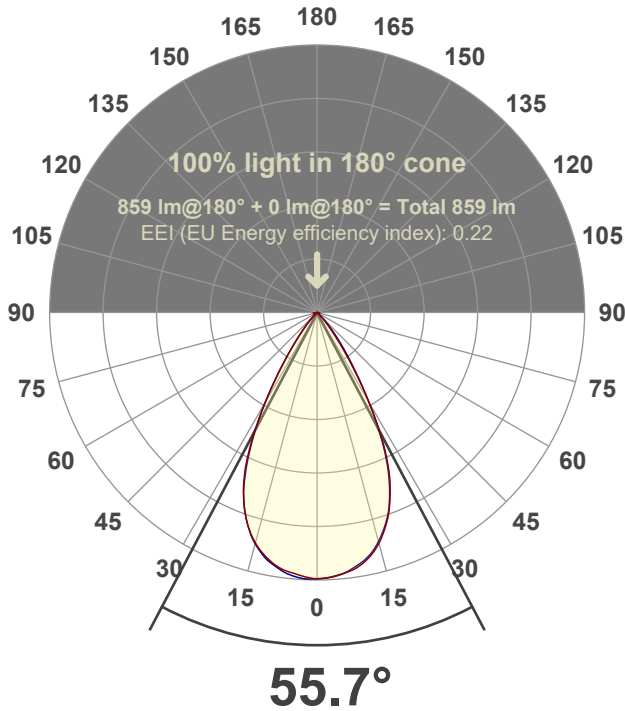
Output: 859 lm

Peak: 1085 cd

Power: 14.7 W



Beam angle



Test number:

GR-O-F-A14-3019-WF-SQ-91A-Rev2

Luminaire Model:

Graffiti Open Square Fixed Downlight-A14-3019 60° Optic-Solite

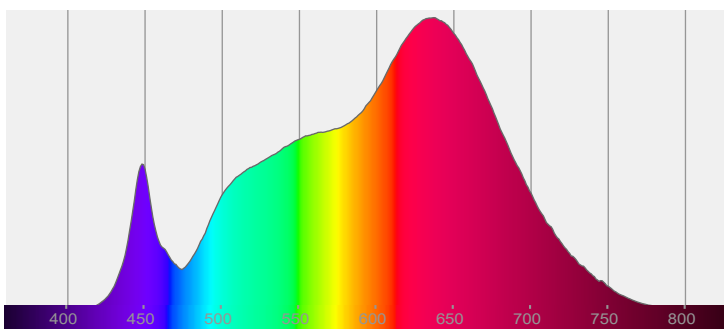
Date and time:

6/21/2022 9:20:35 PM

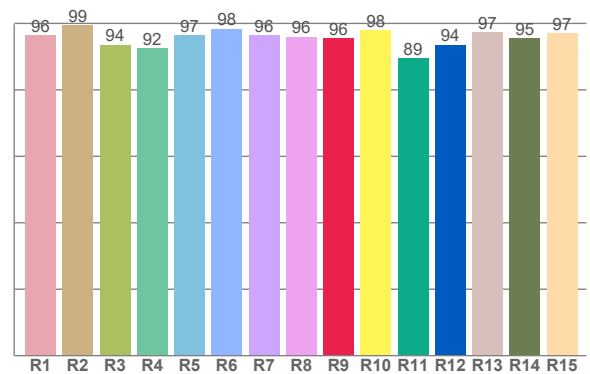
Delivered Lumens

859

Spectra



CRI: 96.1 (R1-R8)



Color parameters

	Color rendering index	Red component	Color fidelity	Color gamut	Color quality scale	Color coordinate cie 1931	Color coordinate cie 1931	Color coordinate	Color coordinate	Color deviation from black body
	CRI	CRI R9	TM30 R <sub>f</sub>	TM30 R <sub>g</sub>	CQS	x	y	u	v	Δuv
	96.1	95.5	95.2	104.4	94.8	0.435	0.402	0.250	0.347	-0.0007

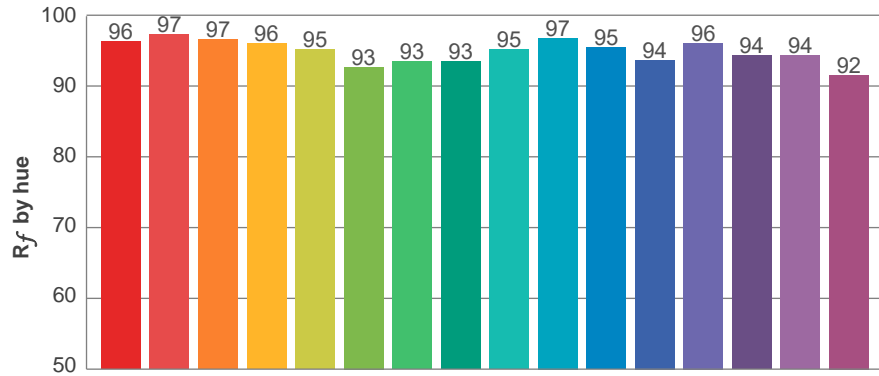
**$R_f$  95.2**  
Fidelity index  $R_f$

---

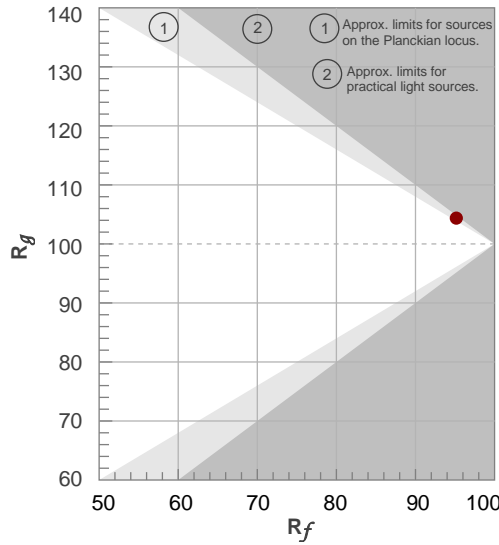
**$R_g$  104.4**  
Gammut index  $R_g$

TM30: 95.2

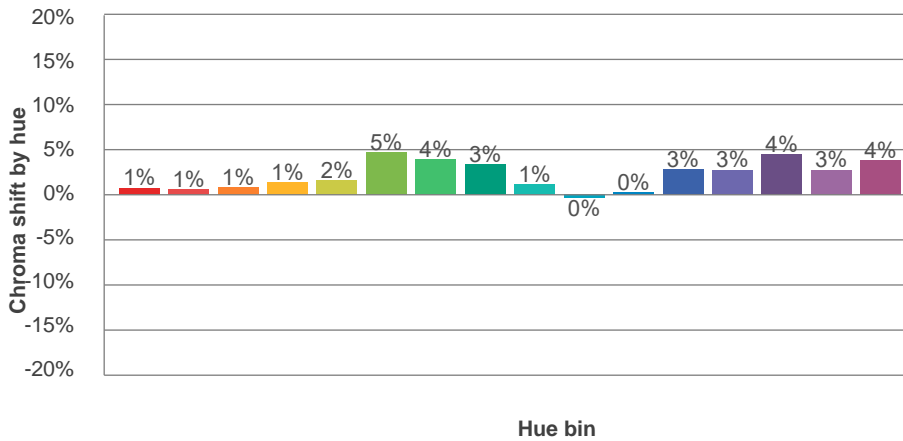
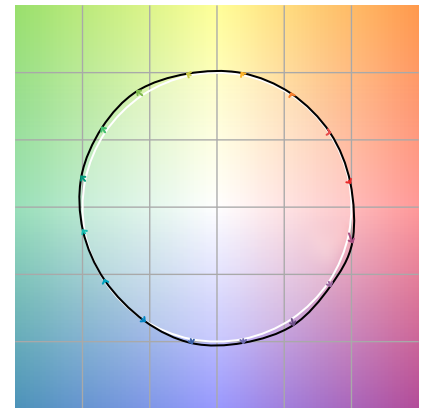
TM-30Color



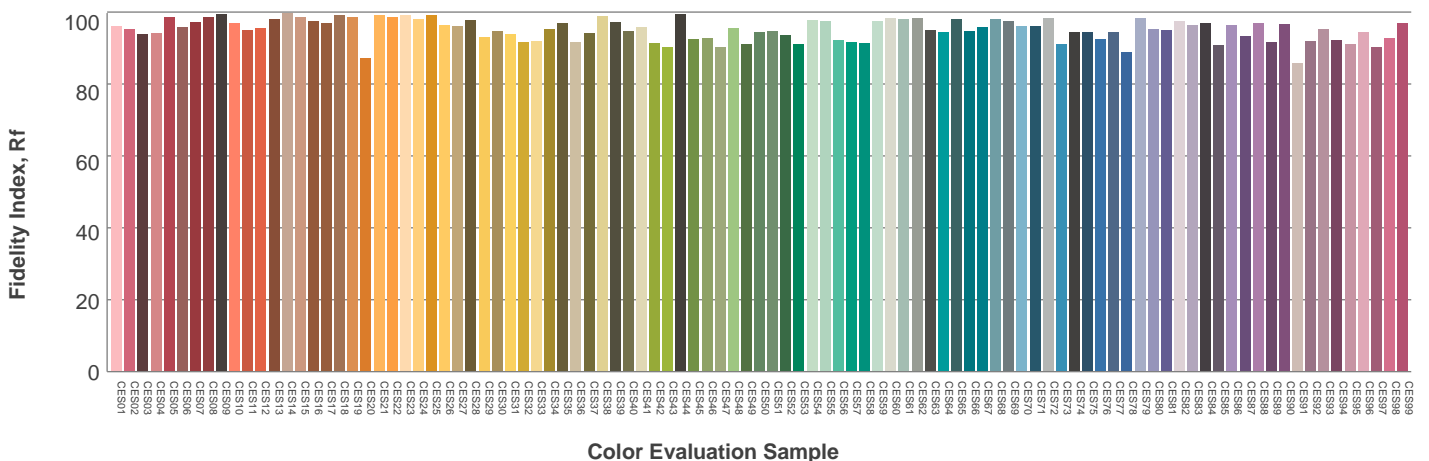
Hue Bin	$R_f$	Graphic shifts (%)	
		Chroma	Hue
1	96	1%	-2%
2	97	1%	-1%
3	97	1%	1%
4	96	1%	2%
5	95	2%	2%
6	93	5%	1%
7	93	4%	-2%
8	93	3%	-3%
9	95	1%	-3%
10	97	0%	-1%
11	95	0%	2%
12	94	3%	1%
13	96	3%	-1%
14	94	4%	-1%
15	94	3%	-2%
16	92	4%	-6%



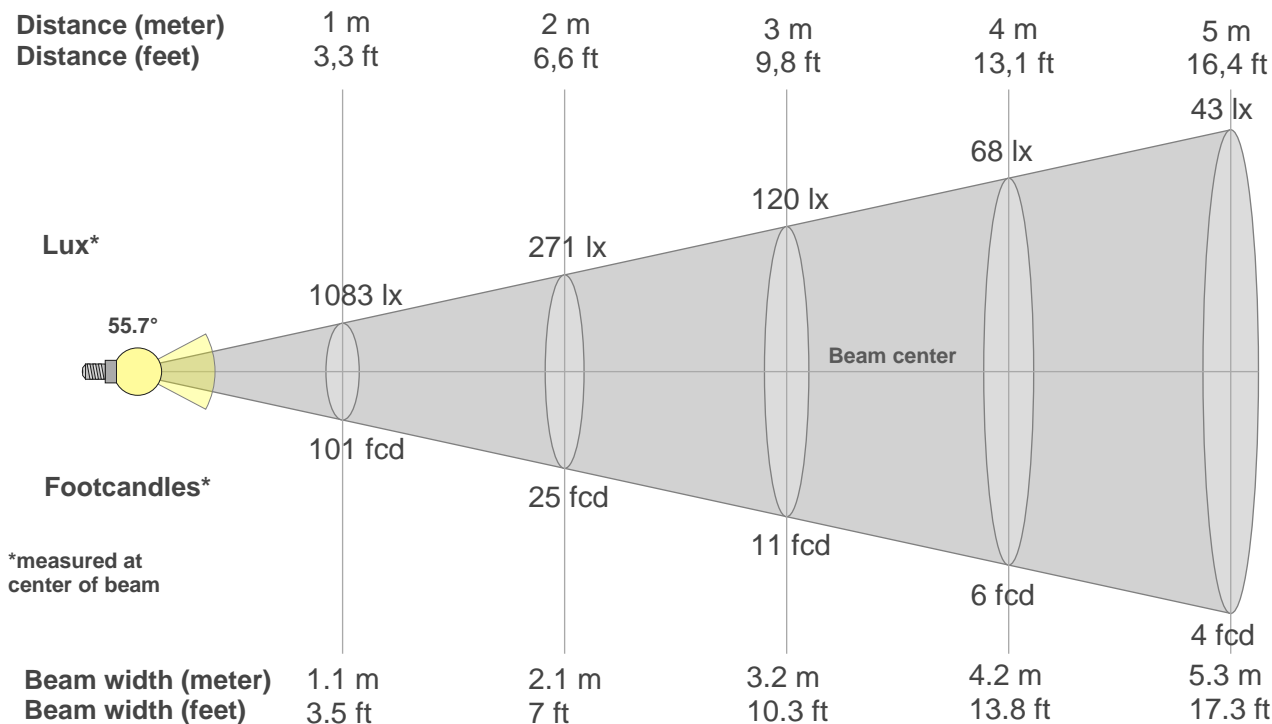
Color vector graphics



Color distortion



### Beam details



#### Beam intensities from 1-20m

1m	2m	3m	4m	5m	6m	7m	8m	9m	10m	11m	12m	13m	14m	15m	16m	17m	18m	19m	20m
3.3ft	6.6ft	9.8ft	13.1ft	16.4ft	19.7ft	23ft	26.2ft	29.5ft	32.8ft	36.1ft	39.4ft	42.7ft	45.9ft	49.2ft	52.5ft	55.8ft	59.1ft	62.3ft	65.6ft
1083lx	271lx	120lx	68lx	43lx	30lx	22lx	17lx	13lx	11lx	9lx	8lx	6lx	6lx	5lx	4lx	4lx	3lx	3lx	3lx
100.6fcd	25.1fcd	11.2fcd	6.3fcd	4fcd	2.8fcd	2.1fcd	1.6fcd	1.2fcd	1fcd	0.8fcd	0.7fcd	0.6fcd	0.5fcd	0.4fcd	0.4fcd	0.3fcd	0.3fcd	0.3fcd	0.3fcd

#### Intensities in 0° c-plane

0°	2°	4°	6°	8°	10°	12°	14°	16°	18°	20°	22°	24°	26°	28°	30°	32°	34°	36°	38°
1083	1081	1076	1067	1056	1040	1018	989	952	908	857	795	726	639	537	431	330	243	174	121
100%	100%	99%	99%	98%	96%	94%	91%	88%	84%	79%	73%	67%	59%	50%	40%	31%	22%	16%	11%

#### Intensities in 90° c-plane

0°	2°	4°	6°	8°	10°	12°	14°	16°	18°	20°	22°	24°	26°	28°	30°	32°	34°	36°	38°
1083	1080	1074	1065	1050	1033	1011	982	945	903	853	790	716	628	529	429	337	260	198	149
100%	100%	99%	98%	97%	95%	93%	91%	87%	83%	79%	73%	66%	58%	49%	40%	31%	24%	18%	14%

#### Intensities in 180° c-plane

0°	2°	4°	6°	8°	10°	12°	14°	16°	18°	20°	22°	24°	26°	28°	30°	32°	34°	36°	38°
1083	1078	1070	1062	1052	1035	1013	987	953	911	860	800	728	640	537	431	331	244	176	124
100%	100%	99%	98%	97%	96%	94%	91%	88%	84%	79%	74%	67%	59%	50%	40%	31%	23%	16%	11%

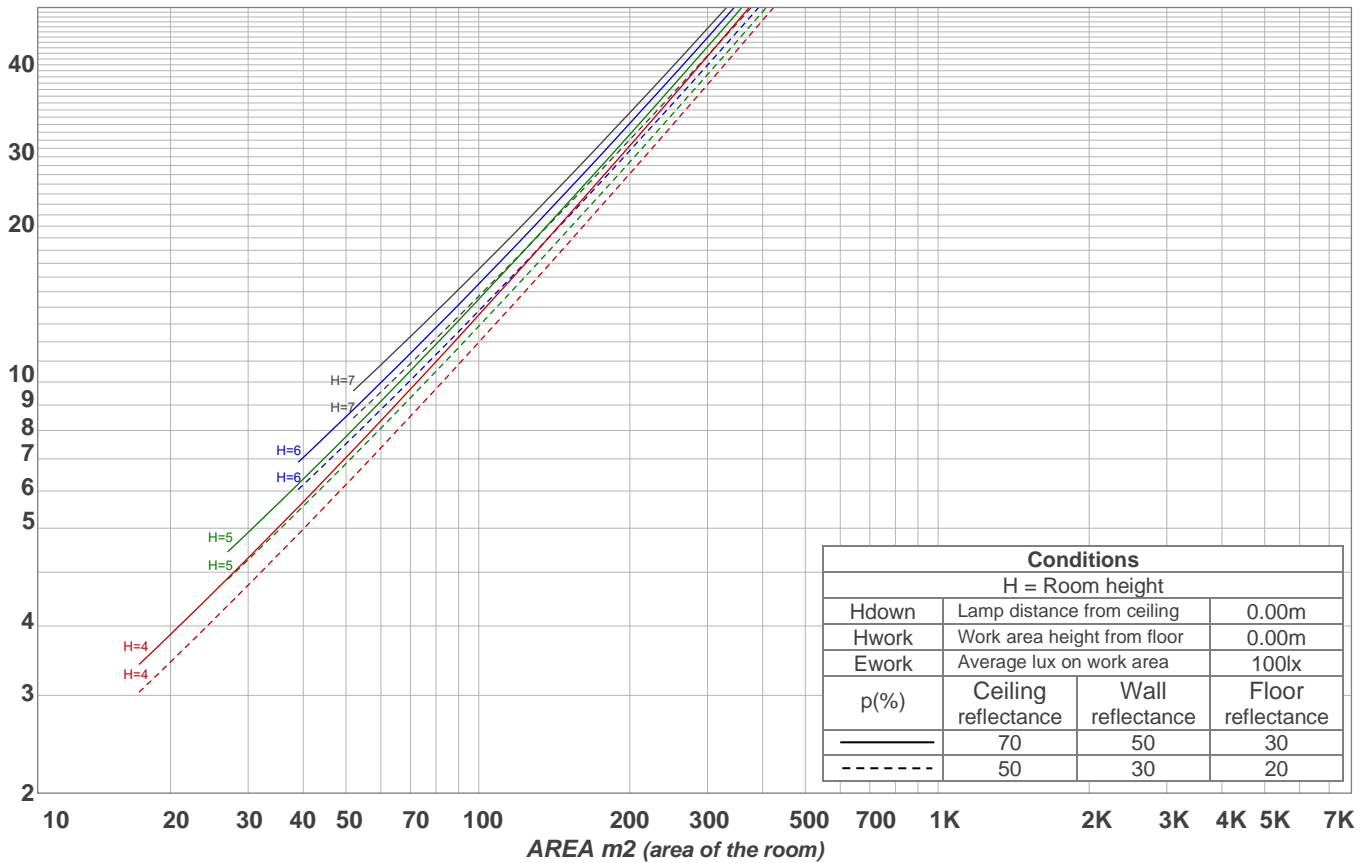
#### Intensities in 270° c-plane

0°	2°	4°	6°	8°	10°	12°	14°	16°	18°	20°	22°	24°	26°	28°	30°	32°	34°	36°	38°
1083	1084	1080	1072	1058	1040	1019	990	956	912	860	797	719	628	529	427	327	238	171	121
100%	100%	100%	99%	98%	96%	94%	91%	88%	84%	79%	74%	66%	58%	49%	39%	30%	22%	16%	11%

Beam angle 50%	Field angle 10%	Cutoff angle 2,5%	Intensity ratio in 120° cone	Intensity ratio in 90° cone
55.7°	77.9°	93.1°	98.9%	97.1%

LAMPS (number of lamps)  
50

### Light planning Luminaire budgetary diagram



### Luminaire budgetary diagram AREA m2 (area of the room) Coefficients of Utilization

Ceiling reflectance	80				70				50			30			10			0			
Wall reflectance	70	50	30	10	70	50	30	10	50	30	10	50	30	10	50	30	10	50	30	10	0
Floor reflectance	20	20	20	20	20	20	20	20	20	20	20	20	20	20	20	20	20	20	20	20	0
<b>RCR</b>	<b>(RCR: Room Cavity Ratio)</b>																				
	Room Values are expressed as percentage of Lumens delivered to the task surface																				
0	119	119	119	119	116	116	116	116	111	111	111	106	106	106	102	102	102	100	100	100	
1	114	111	108	106	111	109	107	105	105	103	101	101	100	98	98	97	96	94	94	94	
2	108	104	100	96	106	102	98	95	99	96	93	96	93	91	93	91	89	88	88	88	
3	103	97	92	88	101	96	91	88	93	89	86	91	87	85	88	86	84	82	82	82	
4	98	91	86	82	96	90	85	81	88	84	80	86	82	79	84	81	78	77	77	77	
5	94	86	80	76	92	85	79	76	83	78	75	81	77	74	80	76	74	72	72	72	
6	89	81	75	71	88	80	75	71	78	74	70	77	73	70	76	72	69	68	68	68	
7	85	76	70	66	84	76	70	66	74	69	66	73	69	66	72	68	65	64	64	64	
8	81	72	66	63	80	72	66	62	71	66	62	70	65	62	69	65	62	60	60	60	
9	78	68	63	59	77	68	63	59	67	62	59	66	62	58	65	61	58	57	57	57	
10	74	65	59	56	73	65	59	56	64	59	55	63	58	55	62	58	55	54	54	54	

### Zonal Lumen Summary

0°-10°	10°-20°	20°-30°	30°-40°	40°-50°	50°-60°	60°-70°	70°-80°	80°-90°
101 lm	270 lm	303 lm	138 lm	31.4 lm	6.43 lm	4.04 lm	3.11 lm	1.92 lm
90°-100°	100°-110°	110°-120°	120°-130°	130°-140°	140°-150°	150°-160°	160°-170°	170°-180°
0.000 lm	0.000 lm	0.000 lm	0.000 lm	0.000 lm	0.000 lm	0.000 lm	0.000 lm	0.000 lm