

Light efficiency:



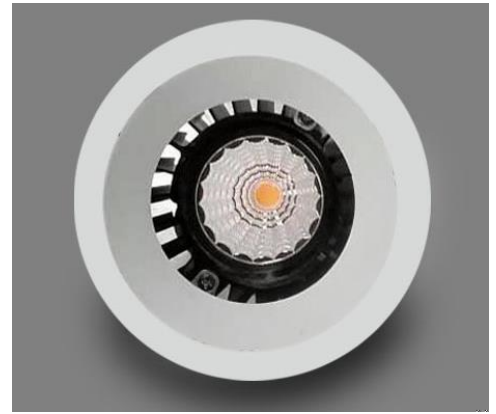
Output: 1025 lm

Light quality:

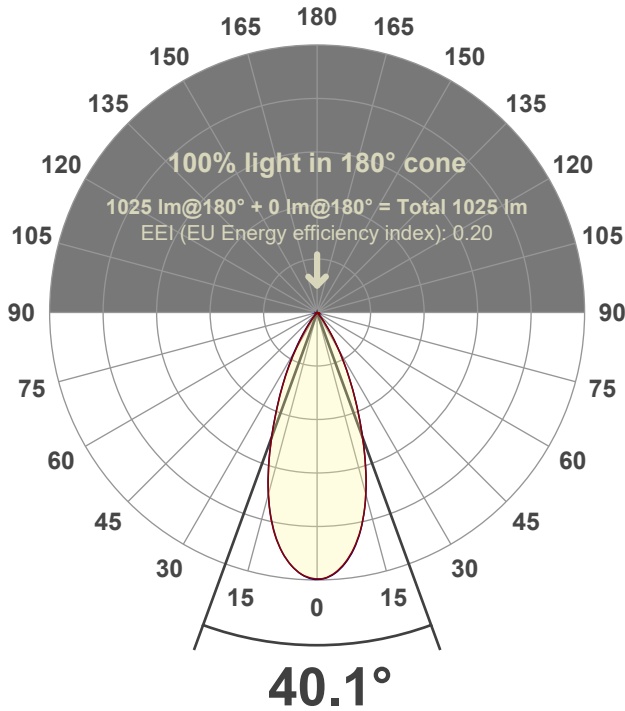


Peak: 2098 cd

Power: 15.1 W



Beam angle



Test number:

GR-O-F-A14-3022-FL-RD-91A-Rev2

Luminaire Model:

Graffiti Open Round Fixed Downlight-A14-3022 38° Optic-Solite

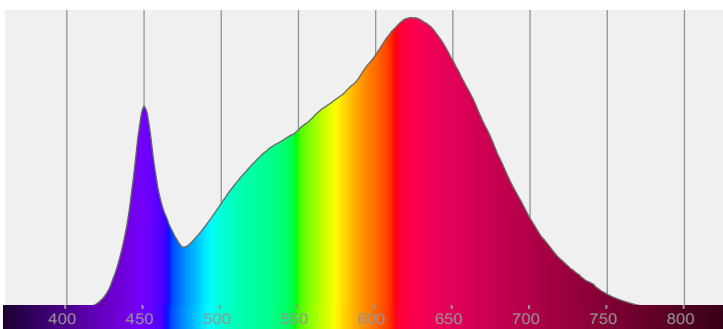
Date and time:

3/24/2022 4:54:21 PM

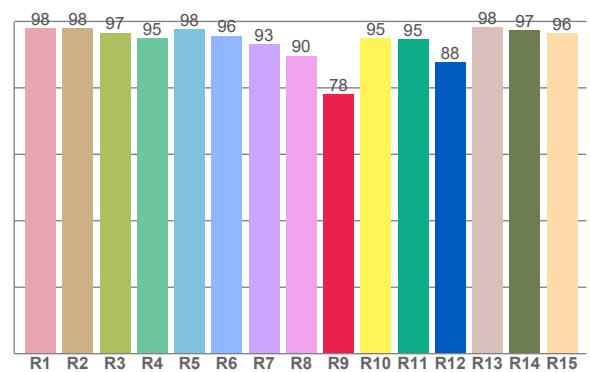
Delivered Lumens

1025

Spectra



CRI: 95.5 (R1-R8)



Color parameters

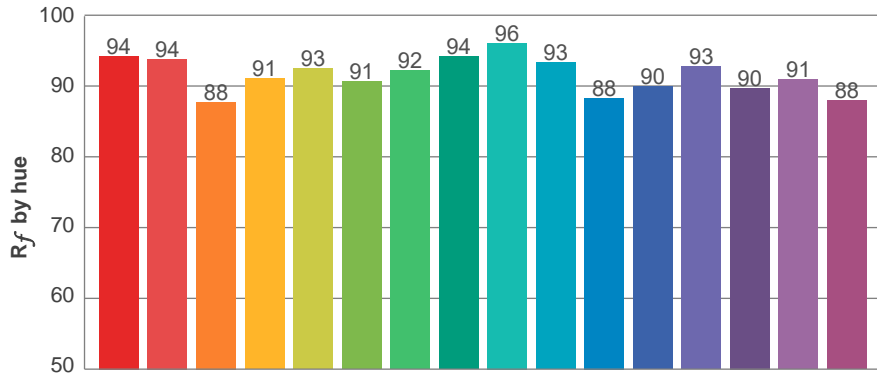
	Color rendering index	Red component	Color fidelity	Color gamut	Color quality scale	Color coordinate cie 1931	Color coordinate cie 1931	Color coordinate	Color coordinate	Color deviation from black body
	CRI	CRI R9	TM30 R _f	TM30 R _g	CQS	x	y	u	v	Δuv
	95.5	78.0	91.8	103.9	90.8	0.422	0.384	0.250	0.341	-0.0063

R_f 91.8
Fidelity index R_f

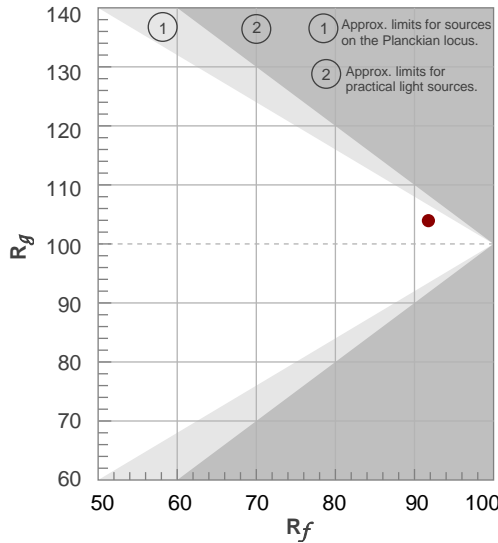
R_g 103.9
Gammut index R_g

TM30: 91.8

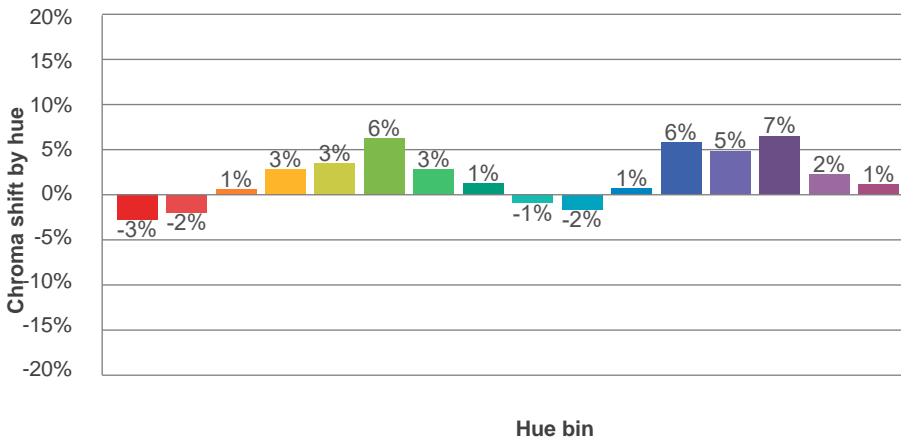
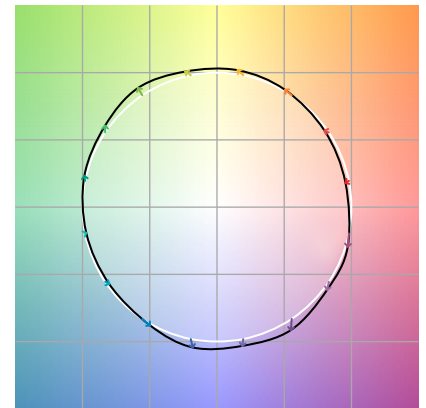
TM-30Color



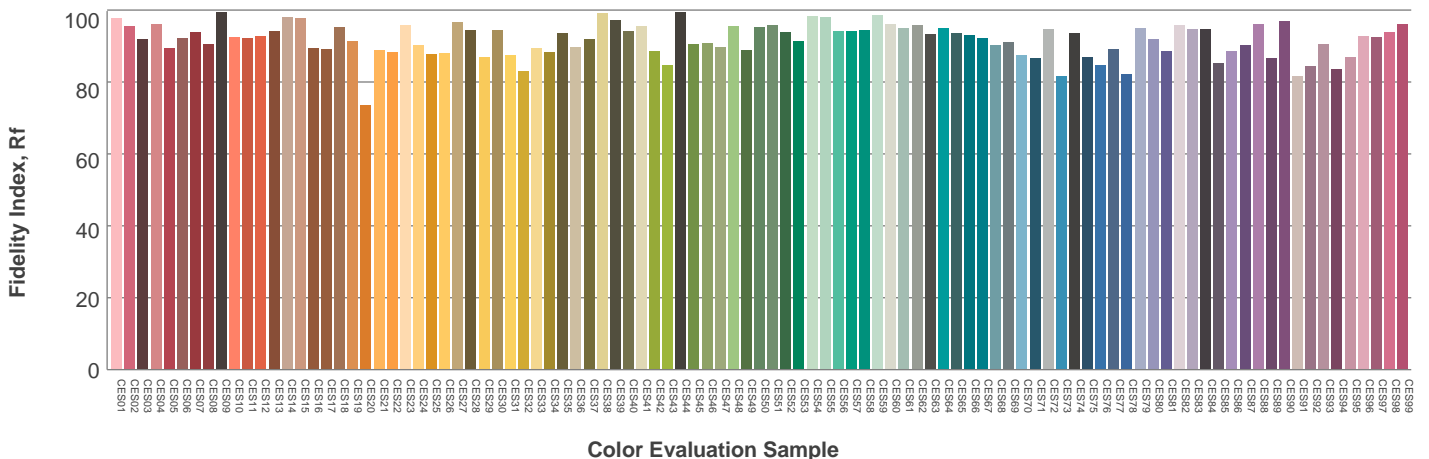
Hue Bin	R_f	Graphic shifts (%)	
		Chroma	Hue
1	94	-3%	-1%
2	94	-2%	3%
3	88	1%	6%
4	91	3%	5%
5	93	3%	3%
6	91	6%	0%
7	92	3%	-4%
8	94	1%	-4%
9	96	-1%	0%
10	93	-2%	3%
11	88	1%	8%
12	90	6%	3%
13	93	5%	-2%
14	90	7%	-5%
15	91	2%	-6%
16	88	1%	-10%



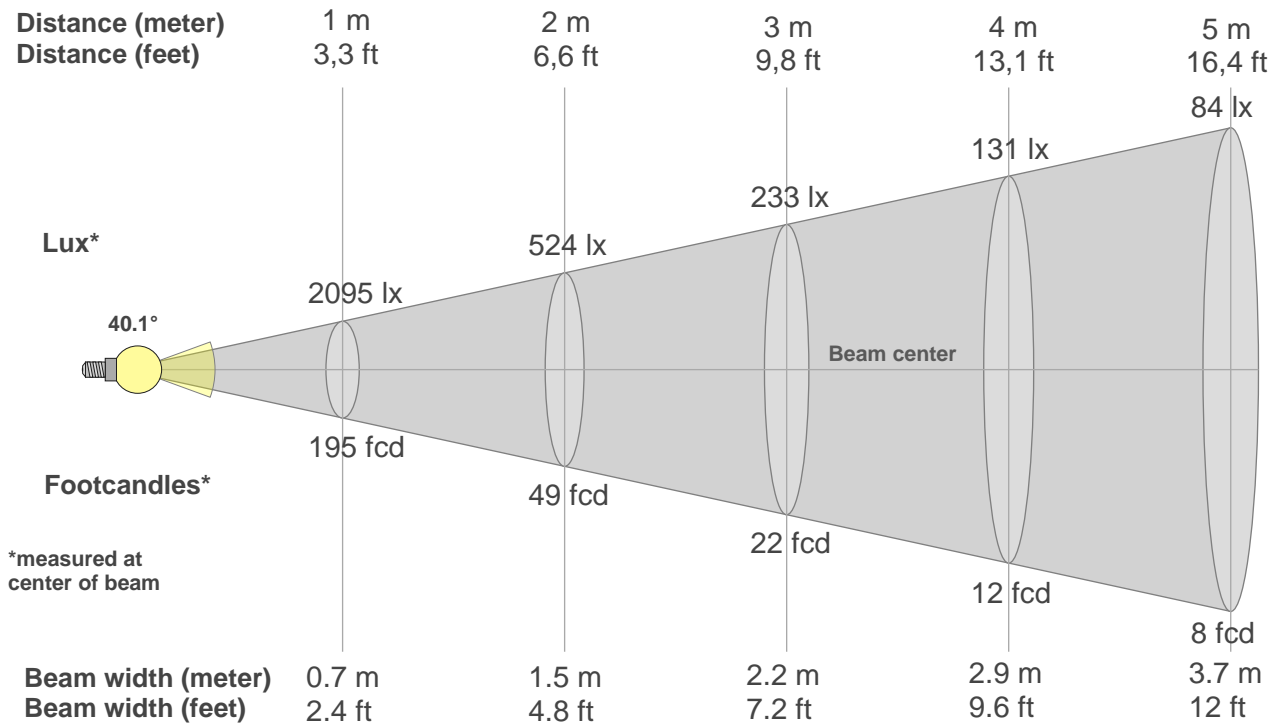
Color vector graphics



Color distortion



Beam details



Beam intensities from 1-20m

1m	2m	3m	4m	5m	6m	7m	8m	9m	10m	11m	12m	13m	14m	15m	16m	17m	18m	19m	20m
3.3ft	6.6ft	9.8ft	13.1ft	16.4ft	19.7ft	23ft	26.2ft	29.5ft	32.8ft	36.1ft	39.4ft	42.7ft	45.9ft	49.2ft	52.5ft	55.8ft	59.1ft	62.3ft	65.6ft
2095lx	524lx	233lx	131lx	84lx	58lx	43lx	33lx	26lx	21lx	17lx	15lx	12lx	11lx	9lx	8lx	7lx	6lx	6lx	5lx
194.6fcd	48.6fcd	21.6fcd	12.2fcd	7.8fcd	5.4fcd	4fcd	3fcd	2.4fcd	1.9fcd	1.6fcd	1.4fcd	1.2fcd	1fcd	0.9fcd	0.8fcd	0.7fcd	0.6fcd	0.5fcd	0.5fcd

Intensities in 0° c-plane

0°	2°	4°	6°	8°	10°	12°	14°	16°	18°	20°	22°	24°	26°	28°	30°	32°	34°	36°	38°
2095	2084	2051	1992	1913	1816	1699	1561	1401	1227	1052	884	730	591	470	359	263	182	118	75
100%	100%	98%	95%	91%	87%	81%	75%	67%	59%	50%	42%	35%	28%	22%	17%	13%	9%	6%	4%

Intensities in 90° c-plane

0°	2°	4°	6°	8°	10°	12°	14°	16°	18°	20°	22°	24°	26°	28°	30°	32°	34°	36°	38°
2095	2087	2055	1998	1919	1821	1701	1561	1401	1228	1055	889	733	590	465	354	258	177	116	78
100%	100%	98%	95%	92%	87%	81%	75%	67%	59%	50%	42%	35%	28%	22%	17%	12%	8%	6%	4%

Intensities in 180° c-plane

0°	2°	4°	6°	8°	10°	12°	14°	16°	18°	20°	22°	24°	26°	28°	30°	32°	34°	36°	38°
2095	2080	2048	1995	1919	1821	1701	1560	1401	1229	1052	884	731	593	465	348	249	168	107	66
100%	99%	98%	95%	92%	87%	81%	74%	67%	59%	50%	42%	35%	28%	22%	17%	12%	8%	5%	3%

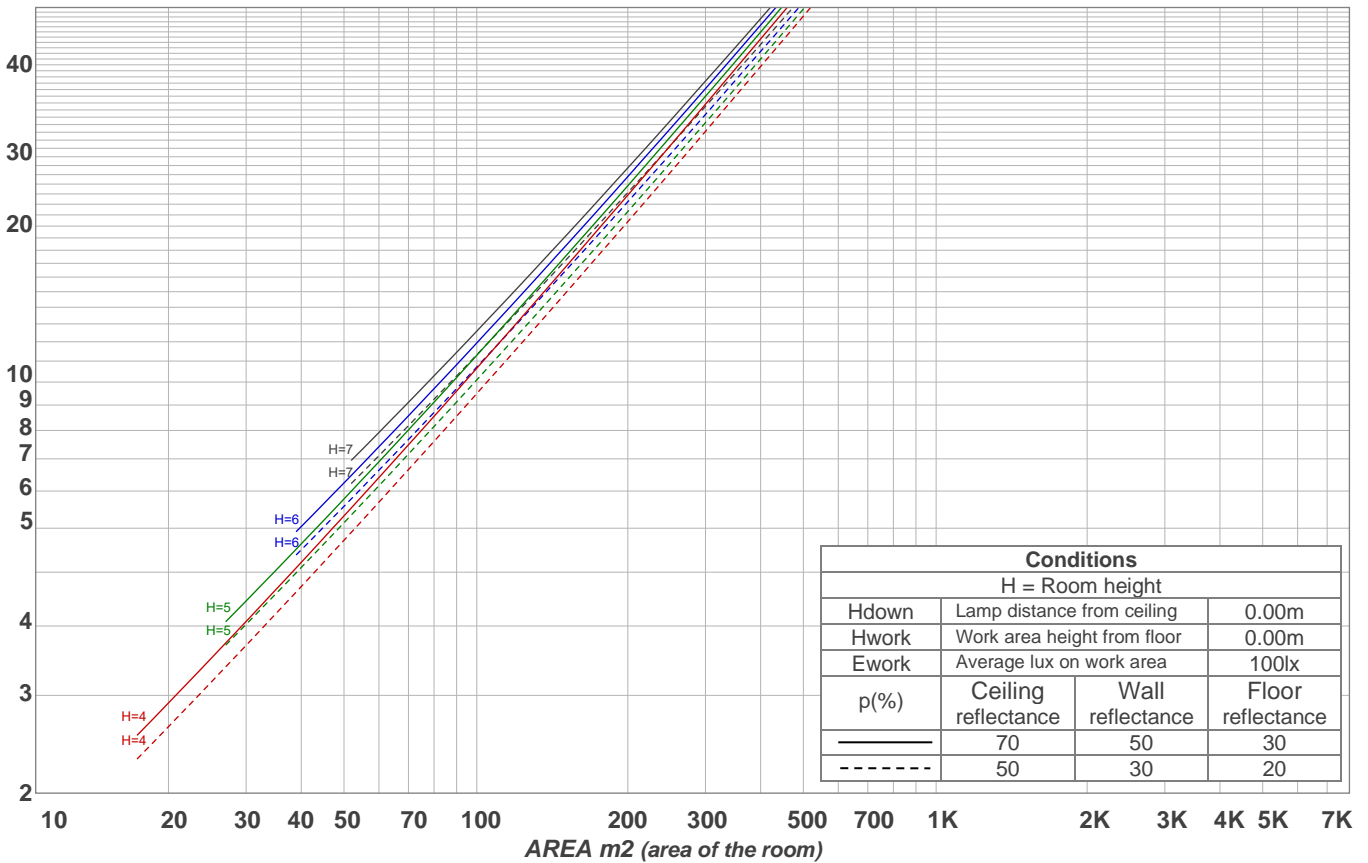
Intensities in 270° c-plane

0°	2°	4°	6°	8°	10°	12°	14°	16°	18°	20°	22°	24°	26°	28°	30°	32°	34°	36°	38°
2095	2084	2049	1994	1916	1816	1696	1558	1403	1229	1055	890	738	602	478	374	280	200	135	89
100%	99%	98%	95%	91%	87%	81%	74%	67%	59%	50%	42%	35%	29%	23%	18%	13%	10%	6%	4%

Beam angle 50%	Field angle 10%	Cutoff angle 2,5%	Intensity ratio in 120° cone	Intensity ratio in 90° cone
40.1°	66.4°	79.8°	99.0%	98.1%

LAMPS (number of lamps)
50

Light planning Luminaire budgetary diagram



Luminaire budgetary diagram AREA m2 (area of the room) Coefficients of Utilization

Ceiling reflectance	80				70				50			30			10			0			
Wall reflectance	70	50	30	10	70	50	30	10	50	30	10	50	30	10	50	30	10	50	30	10	0
Floor reflectance	20	20	20	20	20	20	20	20	20	20	20	20	20	20	20	20	20	20	20	20	0
RCR	(RCR: Room Cavity Ratio)																				
	Room Values are expressed as percentage of Lumens delivered to the task surface																				
0	119	119	119	119	116	116	116	116	111	111	111	106	106	106	102	102	102	100	100	100	
1	114	112	109	107	112	109	107	106	105	104	102	102	100	99	98	97	96	95	95	95	
2	109	105	101	98	107	103	100	97	100	98	95	97	95	93	95	93	91	90	90	90	
3	105	99	95	91	103	98	94	91	95	92	89	93	90	88	91	89	87	85	85	85	
4	101	94	89	86	99	93	89	85	91	87	84	89	86	83	87	84	82	81	81	81	
5	97	89	84	81	95	88	84	80	87	83	80	85	82	79	84	81	78	77	77	77	
6	93	85	80	76	91	84	79	76	83	79	76	82	78	75	80	77	75	73	73	73	
7	89	81	76	72	88	81	76	72	79	75	72	78	74	71	77	74	71	70	70	70	
8	86	78	72	69	85	77	72	69	76	72	68	75	71	68	74	71	68	67	67	67	
9	82	74	69	66	81	74	69	66	73	69	65	72	68	65	71	68	65	64	64	64	
10	79	71	66	63	79	71	66	63	70	66	63	69	65	62	69	65	62	61	61	61	

Zonal Lumen Summary

0°-10°	10°-20°	20°-30°	30°-40°	40°-50°	50°-60°	60°-70°	70°-80°	80°-90°
187 lm	404 lm	302 lm	101 lm	16.2 lm	5.08 lm	3.74 lm	3.08 lm	2.95 lm
90°-100°	100°-110°	110°-120°	120°-130°	130°-140°	140°-150°	150°-160°	160°-170°	170°-180°
0.000 lm	0.000 lm	0.000 lm	0.000 lm	0.000 lm	0.000 lm	0.000 lm	0.000 lm	0.000 lm