

Light efficiency:



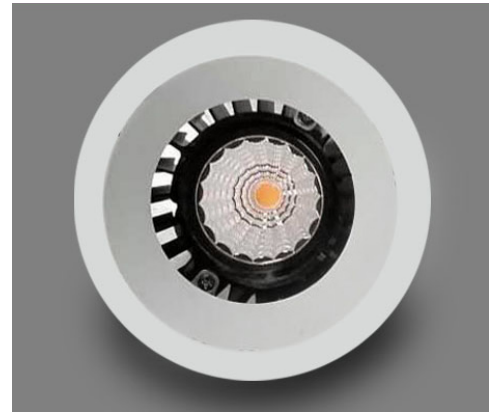
Output: 980 lm

Light quality:

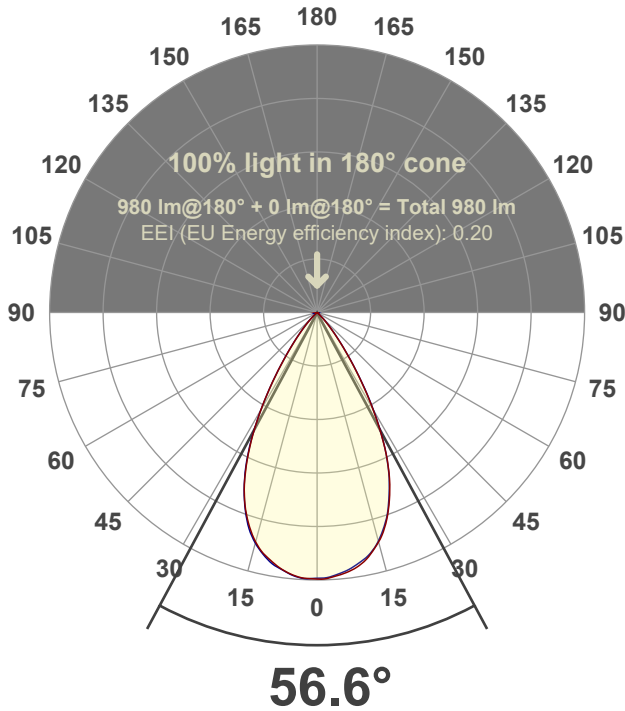


Peak: 1193 cd

Power: 15.0 W



Beam angle



Test number:

GR-O-F-A14-3022-WF-RD-91A-Rev2

Luminaire Model:

Graffiti Open Round Fixed Downlight-A14-3022 60° Optic-Solite

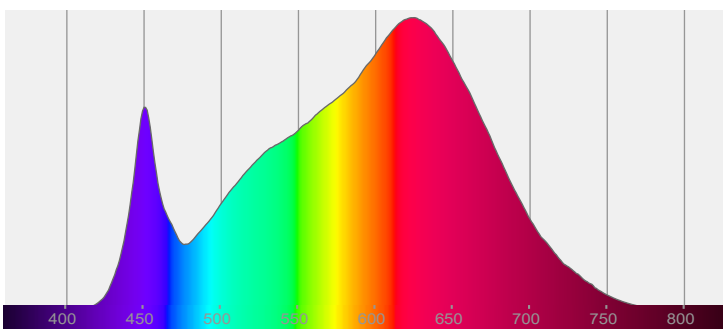
Date and time:

3/24/2022 5:46:06 PM

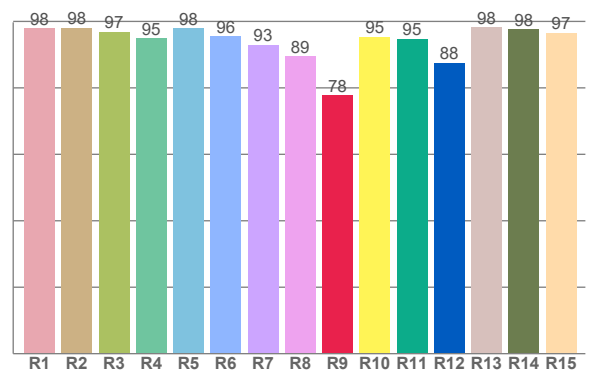
Delivered Lumens

980

Spectra



CRI: 95.5 (R1-R8)



Color parameters

	Color rendering index	Red component	Color fidelity	Color gamut	Color quality scale	Color coordinate cie 1931	Color coordinate cie 1931	Color coordinate	Color coordinate	Color deviation from black body
	CRI	CRI R9	TM30 R <sub>f</sub>	TM30 R <sub>g</sub>	CQS	x	y	u	v	Δuv
	95.5	77.9	91.8	103.8	90.7	0.421	0.382	0.250	0.340	-0.0067

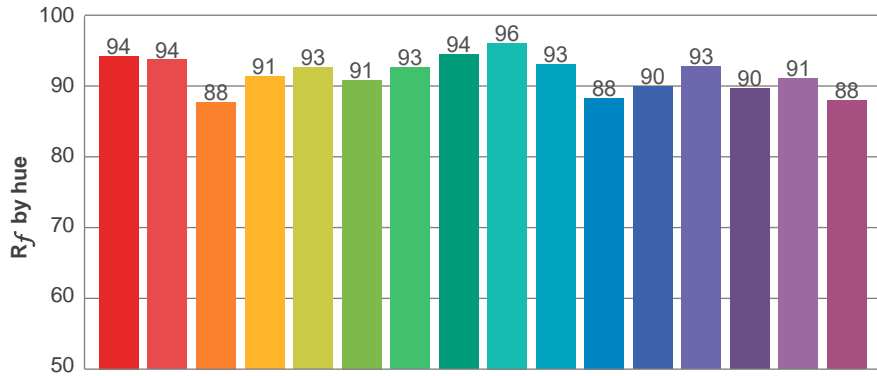
**$R_f$  91.8**  
Fidelity index  $R_f$

---

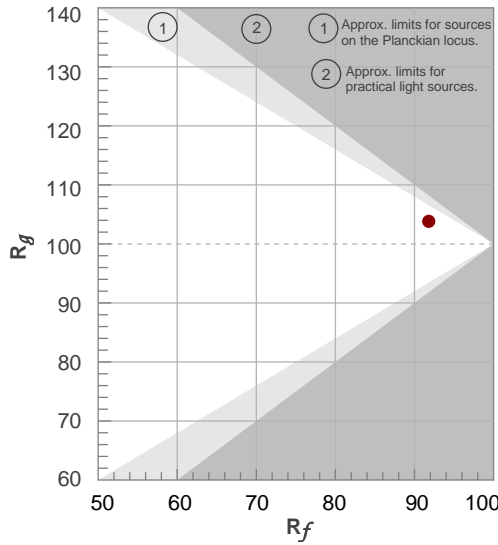
**$R_g$  103.8**  
Gammut index  $R_g$

TM30: 91.8

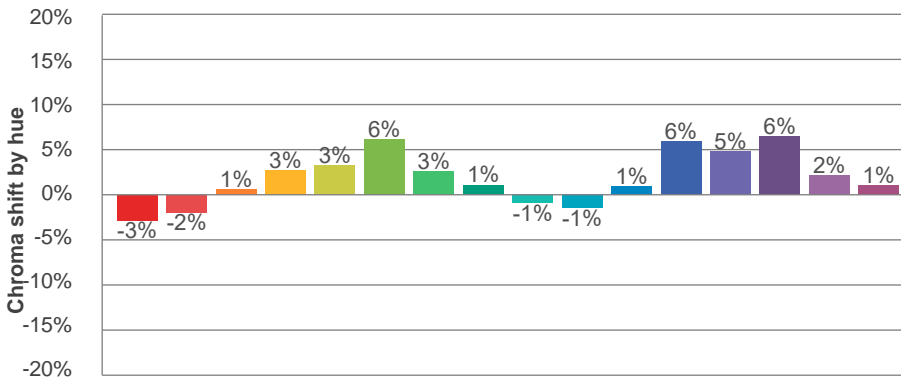
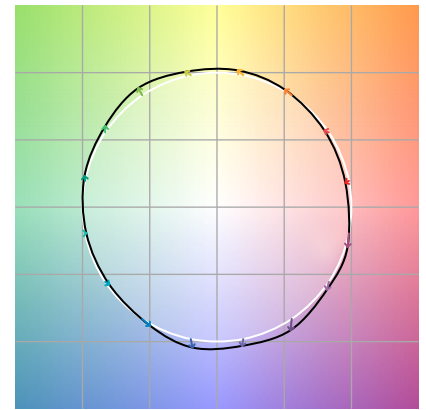
TM-30Color



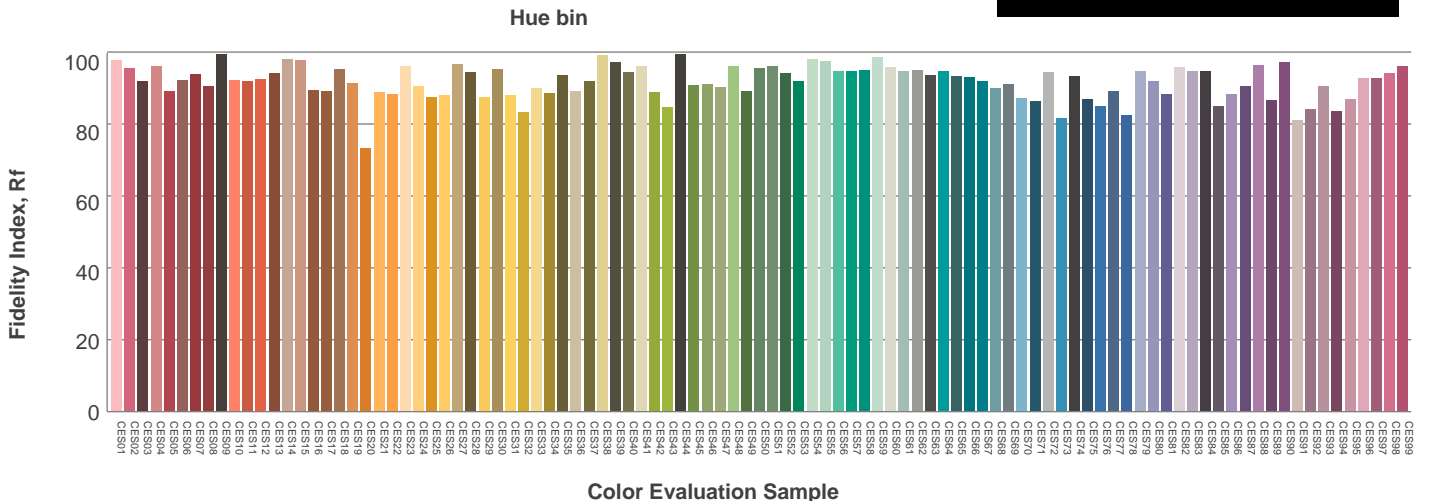
Hue Bin	$R_f$	Graphic shifts (%)	
		Chroma	Hue
1	94	-3%	-1%
2	94	-2%	3%
3	88	1%	6%
4	91	3%	5%
5	93	3%	3%
6	91	6%	0%
7	93	3%	-4%
8	94	1%	-3%
9	96	-1%	0%
10	93	-1%	3%
11	88	1%	8%
12	90	6%	3%
13	93	5%	-2%
14	90	6%	-5%
15	91	2%	-6%
16	88	1%	-10%



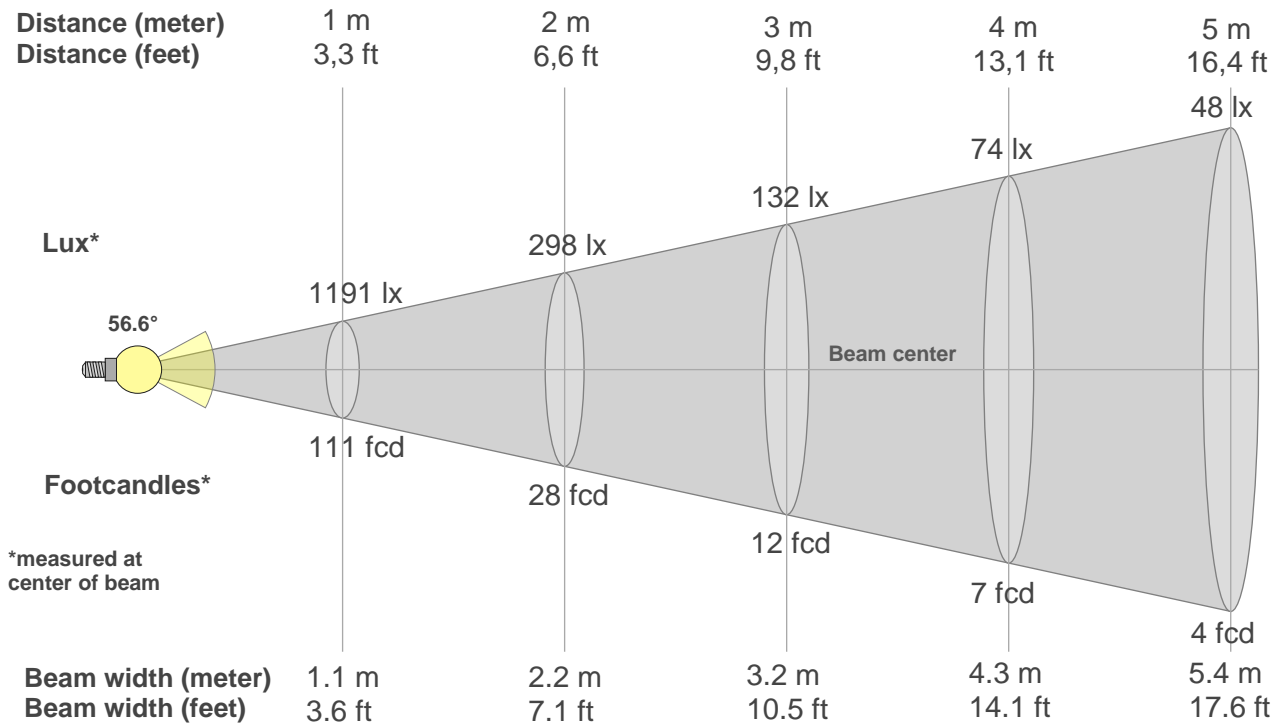
Color vector graphics



Color distortion



### Beam details



#### Beam intensities from 1-20m

1m	2m	3m	4m	5m	6m	7m	8m	9m	10m	11m	12m	13m	14m	15m	16m	17m	18m	19m	20m
3.3ft	6.6ft	9.8ft	13.1ft	16.4ft	19.7ft	23ft	26.2ft	29.5ft	32.8ft	36.1ft	39.4ft	42.7ft	45.9ft	49.2ft	52.5ft	55.8ft	59.1ft	62.3ft	65.6ft
1191lx	298lx	132lx	74lx	48lx	33lx	24lx	19lx	15lx	12lx	10lx	8lx	7lx	6lx	5lx	5lx	4lx	4lx	3lx	3lx
110.6fcd	27.7fcd	12.3fcd	6.9fcd	4.4fcd	3.1fcd	2.3fcd	1.7fcd	1.4fcd	1.1fcd	0.9fcd	0.8fcd	0.7fcd	0.6fcd	0.5fcd	0.4fcd	0.4fcd	0.3fcd	0.3fcd	0.3fcd

#### Intensities in 0° c-plane

0°	2°	4°	6°	8°	10°	12°	14°	16°	18°	20°	22°	24°	26°	28°	30°	32°	34°	36°	38°
1191	1191	1183	1173	1160	1141	1115	1082	1044	994	935	869	795	709	610	507	408	315	234	172
100%	100%	99%	99%	97%	96%	94%	91%	88%	83%	79%	73%	67%	60%	51%	43%	34%	26%	20%	14%

#### Intensities in 90° c-plane

0°	2°	4°	6°	8°	10°	12°	14°	16°	18°	20°	22°	24°	26°	28°	30°	32°	34°	36°	38°
1191	1187	1178	1166	1150	1131	1110	1078	1037	988	931	863	791	706	611	511	412	315	236	173
100%	100%	99%	98%	97%	95%	93%	91%	87%	83%	78%	72%	66%	59%	51%	43%	35%	26%	20%	15%

#### Intensities in 180° c-plane

0°	2°	4°	6°	8°	10°	12°	14°	16°	18°	20°	22°	24°	26°	28°	30°	32°	34°	36°	38°
1191	1191	1186	1175	1158	1136	1111	1081	1042	994	937	870	792	704	610	509	410	319	240	176
100%	100%	100%	99%	97%	95%	93%	91%	88%	83%	79%	73%	67%	59%	51%	43%	34%	27%	20%	15%

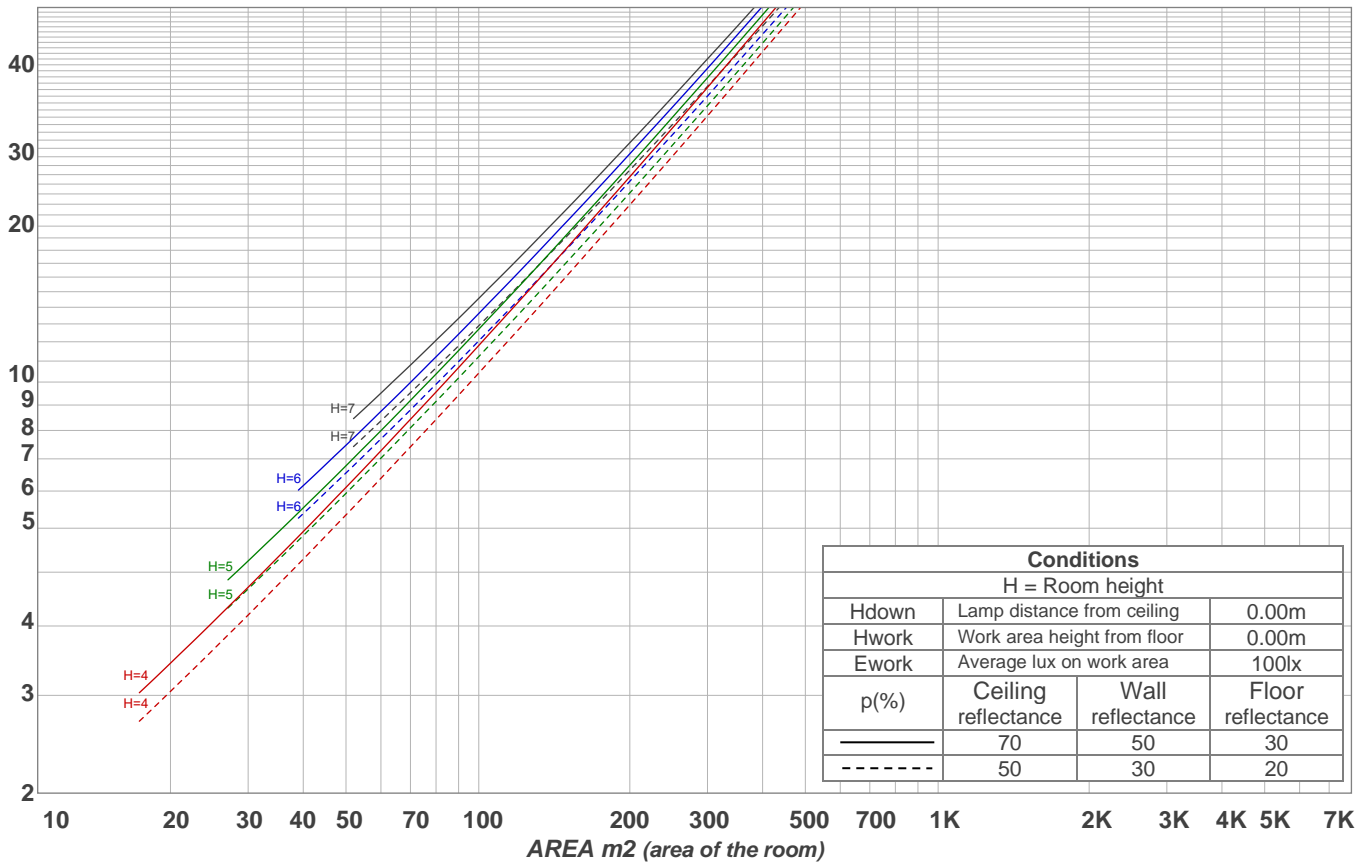
#### Intensities in 270° c-plane

0°	2°	4°	6°	8°	10°	12°	14°	16°	18°	20°	22°	24°	26°	28°	30°	32°	34°	36°	38°
1191	1191	1187	1176	1160	1144	1117	1086	1048	1001	942	873	796	708	611	508	408	318	240	177
100%	100%	100%	99%	97%	96%	94%	91%	88%	84%	79%	73%	67%	59%	51%	43%	34%	27%	20%	15%

Beam angle 50%	Field angle 10%	Cutoff angle 2,5%	Intensity ratio in 120° cone	Intensity ratio in 90° cone
56.6°	80.6°	95.3°	99.2%	97.1%

LAMPS (number of lamps)  
50

### Light planning Luminaire budgetary diagram



### Luminaire budgetary diagram AREA m2 (area of the room) Coefficients of Utilization

Ceiling reflectance	80				70				50			30			10			0			
Wall reflectance	70	50	30	10	70	50	30	10	50	30	10	50	30	10	50	30	10	50	30	10	0
Floor reflectance	20	20	20	20	20	20	20	20	20	20	20	20	20	20	20	20	20	20	20	20	0
RCR	(RCR: Room Cavity Ratio)																				
	Room Values are expressed as percentage of Lumens delivered to the task surface																				
0	119	119	119	119	116	116	116	116	111	111	111	106	106	106	102	102	102	100	100	100	
1	114	111	108	106	111	109	107	105	105	103	101	101	100	98	98	96	95	94	94	94	
2	108	103	99	96	106	102	98	95	98	96	93	96	93	91	93	91	89	87	87	87	
3	103	97	92	88	101	95	91	87	93	89	86	90	87	85	88	85	83	82	82	82	
4	98	91	85	81	96	90	85	81	87	83	80	85	82	79	84	80	78	76	76	76	
5	93	85	79	75	92	84	79	75	82	78	74	81	77	74	79	76	73	72	72	72	
6	89	80	74	70	87	79	74	70	78	73	69	76	72	69	75	71	69	67	67	67	
7	85	76	70	66	83	75	69	65	74	69	65	72	68	65	71	67	64	63	63	63	
8	81	71	66	62	79	71	65	61	70	65	61	69	64	61	68	64	61	59	59	59	
9	77	68	62	58	76	67	62	58	66	61	58	65	61	58	64	60	57	56	56	56	
10	74	64	58	55	73	64	58	55	63	58	54	62	58	54	61	57	54	53	53	53	

### Zonal Lumen Summary

0°-10°	10°-20°	20°-30°	30°-40°	40°-50°	50°-60°	60°-70°	70°-80°	80°-90°
111 lm	296 lm	337 lm	177 lm	43.2 lm	8.04 lm	3.34 lm	2.25 lm	1.87 lm
90°-100°	100°-110°	110°-120°	120°-130°	130°-140°	140°-150°	150°-160°	160°-170°	170°-180°
0.000 lm	0.000 lm	0.000 lm	0.000 lm	0.000 lm	0.000 lm	0.000 lm	0.000 lm	0.000 lm