

Light efficiency:



Output: 1454 lm

Light quality:

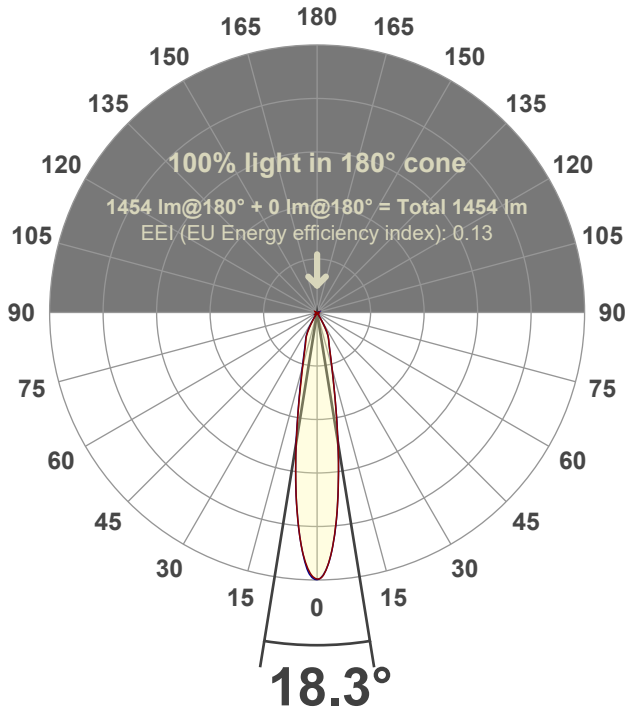


Peak: 8346 cd

Power: 14.2 W



Beam angle



Test number:

GR-O-F-CZ14-30k-SP-SQ-Rev2

Luminaire Model:

Graffiti Open Square Fixed Downlight-CZ14 30k 15° Optic

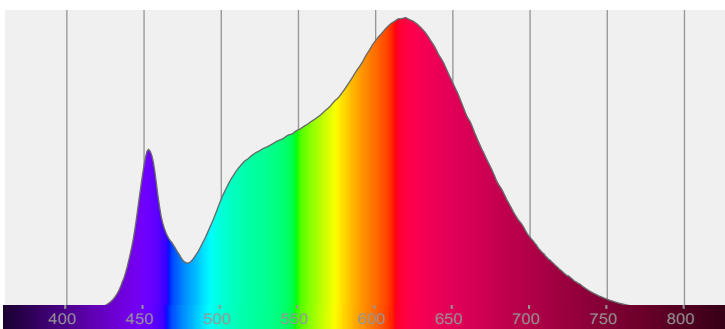
Date and time:

6/30/2022 9:33:03 PM

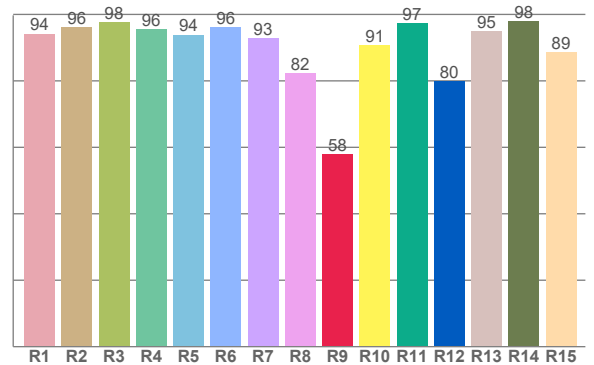
Delivered Lumens

1454

Spectra



CRI: 93.6 (R1-R8)



Color parameters

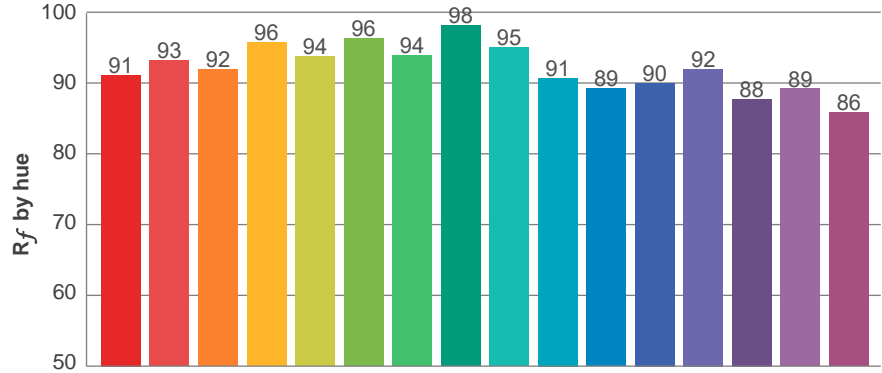
	Color rendering index	Red component	Color fidelity	Color gamut	Color quality scale	Color coordinate cie 1931	Color coordinate cie 1931	Color coordinate	Color coordinate	Color deviation from black body
	CRI	CRI R9	TM30 R _f	TM30 R _g	CQS	x	y	u	v	Δuv
	93.6	57.9	92.3	99.2	91.9	0.437	0.408	0.249	0.349	0.0014

R_f 92.3
Fidelity index R_f

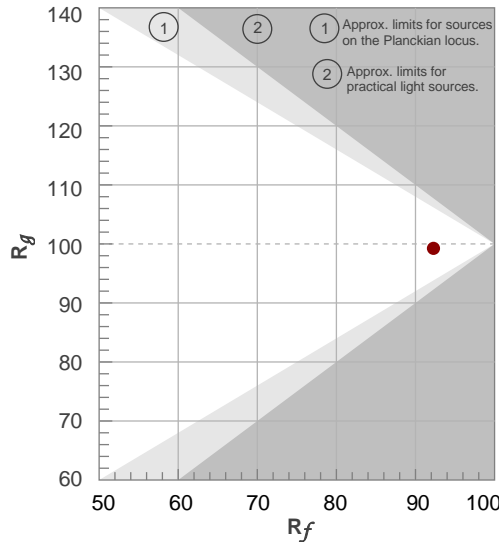
R_g 99.2
Gammut index R_g

TM30: 92.3

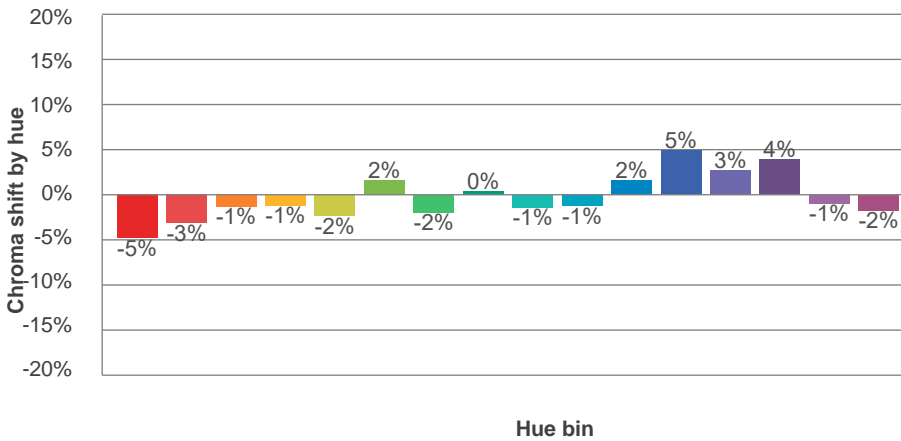
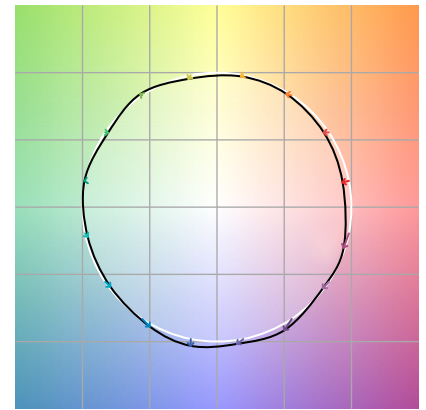
TM-30Color



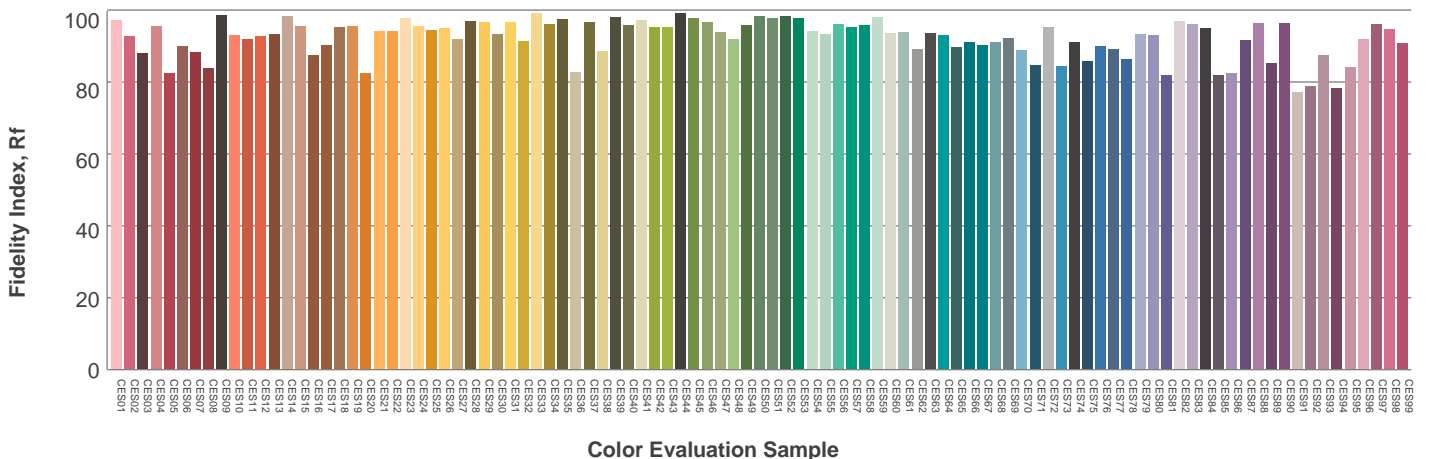
Hue Bin	R_f	Graphic shifts (%)	
		Chroma	Hue
1	91	-5%	0%
2	93	-3%	2%
3	92	-1%	4%
4	96	-1%	1%
5	94	-2%	2%
6	96	2%	1%
7	94	-2%	-1%
8	98	0%	0%
9	95	-1%	3%
10	91	-1%	5%
11	89	2%	8%
12	90	5%	1%
13	92	3%	-5%
14	88	4%	-9%
15	89	-1%	-6%
16	86	-2%	-11%



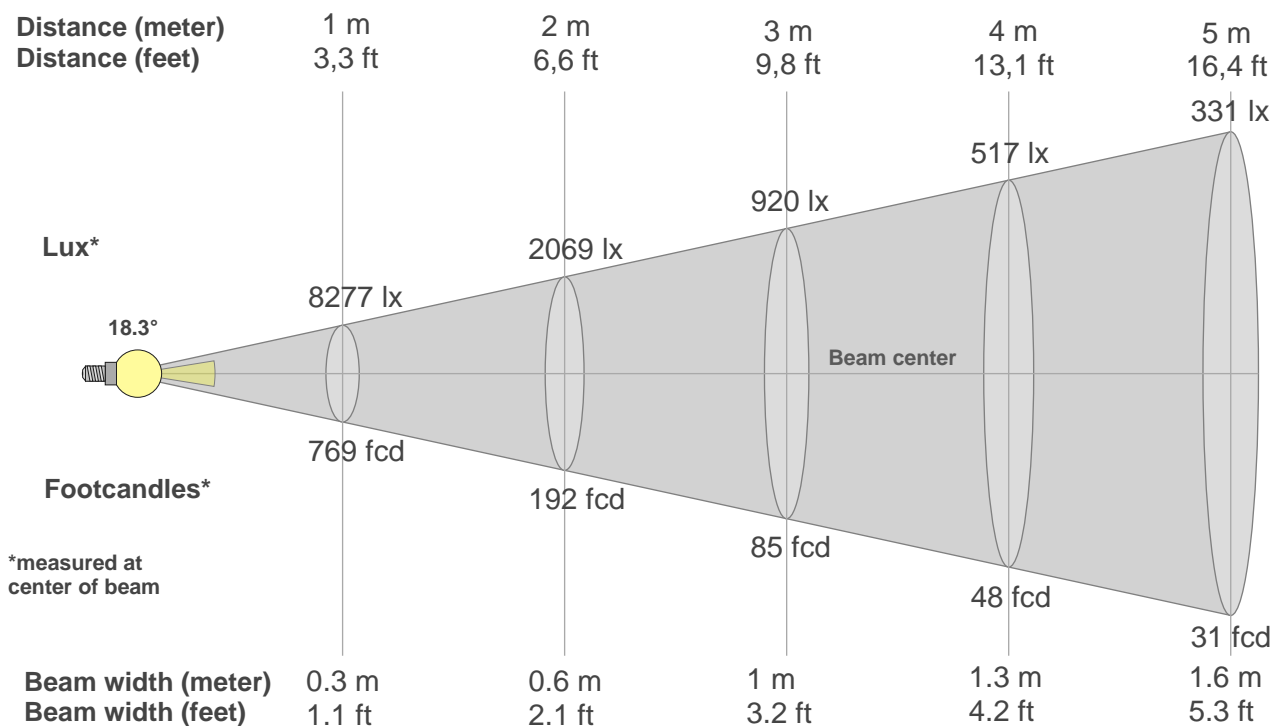
Color vector graphics



Color distortion



Beam details



Beam intensities from 1-20m

1m	2m	3m	4m	5m	6m	7m	8m	9m	10m	11m	12m	13m	14m	15m	16m	17m	18m	19m	20m
3.3ft	6.6ft	9.8ft	13.1ft	16.4ft	19.7ft	23ft	26.2ft	29.5ft	32.8ft	36.1ft	39.4ft	42.7ft	45.9ft	49.2ft	52.5ft	55.8ft	59.1ft	62.3ft	65.6ft
8277lx	2069lx	920lx	517lx	331lx	230lx	169lx	129lx	102lx	83lx	68lx	57lx	49lx	42lx	37lx	32lx	29lx	26lx	23lx	21lx
769fcd	192.2fcd	85.4fcd	48.1fcd	30.8fcd	21.4fcd	15.7fcd	12fcd	9.5fcd	7.7fcd	6.4fcd	5.3fcd	4.6fcd	3.9fcd	3.4fcd	3fcd	2.7fcd	2.4fcd	2.1fcd	1.9fcd

Intensities in 0° c-plane

0°	2°	4°	6°	8°	10°	12°	14°	16°	18°	20°	22°	24°	26°	28°	30°	32°	34°	36°	38°
8277	7988	7219	6104	4831	3664	2742	2084	1642	1337	1133	993	880	753	577	344	132	40	15	11
100%	97%	87%	74%	58%	44%	33%	25%	20%	16%	14%	12%	11%	9%	7%	4%	2%	0%	0%	0%

Intensities in 90° c-plane

0°	2°	4°	6°	8°	10°	12°	14°	16°	18°	20°	22°	24°	26°	28°	30°	32°	34°	36°	38°
8277	7979	7197	6092	4838	3641	2706	2062	1625	1327	1120	976	867	717	506	284	108	18	11	9
100%	96%	87%	74%	58%	44%	33%	25%	20%	16%	14%	12%	10%	9%	6%	3%	1%	0%	0%	0%

Intensities in 180° c-plane

0°	2°	4°	6°	8°	10°	12°	14°	16°	18°	20°	22°	24°	26°	28°	30°	32°	34°	36°	38°
8277	7970	7230	6114	4842	3656	2701	2016	1570	1272	1079	950	837	685	477	243	70	23	11	10
100%	96%	87%	74%	58%	44%	33%	24%	19%	15%	13%	11%	10%	8%	6%	3%	1%	0%	0%	0%

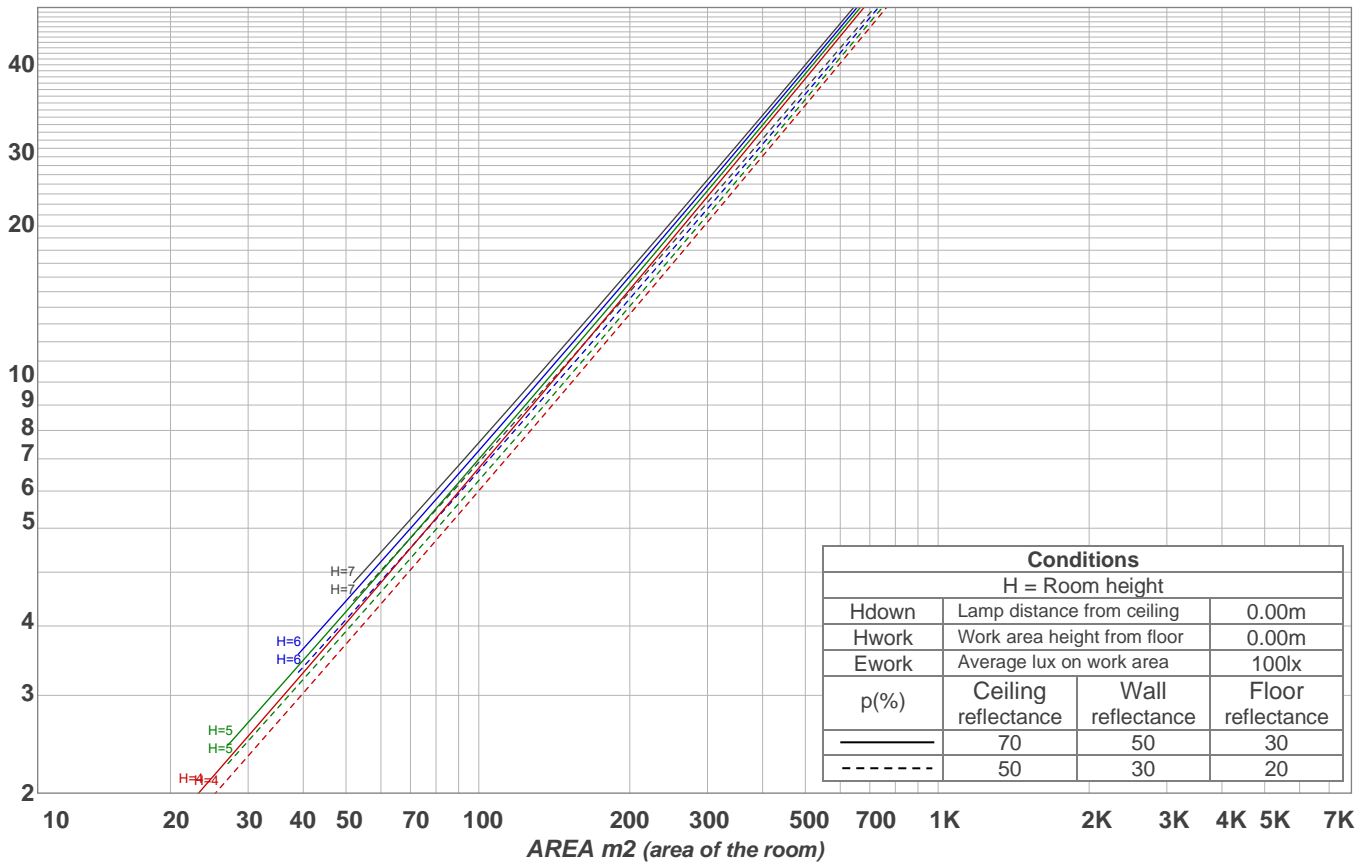
Intensities in 270° c-plane

0°	2°	4°	6°	8°	10°	12°	14°	16°	18°	20°	22°	24°	26°	28°	30°	32°	34°	36°	38°
8277	8109	7230	6091	4861	3696	2731	2056	1628	1334	1130	984	866	740	544	308	125	33	12	10
100%	98%	87%	74%	59%	45%	33%	25%	20%	16%	14%	12%	10%	9%	7%	4%	2%	0%	0%	0%

Beam angle 50%	Field angle 10%	Cutoff angle 2,5%	Intensity ratio in 120° cone	Intensity ratio in 90° cone
18.3°	49.1°	61.7°	99.3%	99.0%

LAMPS (number of lamps)
50

Light planning Luminaire budgetary diagram



Luminaire budgetary diagram AREA m2 (area of the room) Coefficients of Utilization

Ceiling reflectance	80				70				50			30			10			0			
Wall reflectance	70	50	30	10	70	50	30	10	50	30	10	50	30	10	50	30	10	50	30	10	0
Floor reflectance	20	20	20	20	20	20	20	20	20	20	20	20	20	20	20	20	20	20	20	20	0
RCR	(RCR: Room Cavity Ratio)																				
	Room Values are expressed as percentage of Lumens delivered to the task surface																				
0	119	119	119	119	116	116	116	116	111	111	111	106	106	106	102	102	102	100	100		
1	115	113	111	109	112	111	109	107	107	105	104	103	102	101	100	99	98	98	96		
2	111	107	104	102	109	106	103	101	103	100	98	100	98	96	97	96	94	94	93		
3	107	103	99	96	106	101	98	95	99	96	94	97	94	92	94	93	91	90	89		
4	104	99	95	92	102	98	94	91	96	92	90	94	91	89	92	90	88	87	86		
5	101	95	91	88	100	94	90	87	92	89	87	91	88	86	90	87	85	84	83		
6	98	92	87	84	97	91	87	84	90	86	84	88	85	83	87	85	83	81	80		
7	95	89	84	81	94	88	84	81	87	83	81	86	83	80	85	82	80	79	78		
8	93	86	82	79	92	85	81	79	84	81	78	84	80	78	83	80	78	77	76		
9	90	83	79	76	89	83	79	76	82	79	76	81	78	76	81	78	76	75	74		
10	88	81	77	74	87	81	77	74	80	76	74	79	76	74	79	76	74	73	72		

Zonal Lumen Summary

0°-10°	10°-20°	20°-30°	30°-40°	40°-50°	50°-60°	60°-70°	70°-80°	80°-90°
536 lm	528 lm	341 lm	33.0 lm	3.92 lm	2.76 lm	3.12 lm	3.49 lm	3.92 lm
90°-100°	100°-110°	110°-120°	120°-130°	130°-140°	140°-150°	150°-160°	160°-170°	170°-180°
0.000 lm	0.000 lm	0.000 lm	0.000 lm	0.000 lm	0.000 lm	0.000 lm	0.000 lm	0.000 lm