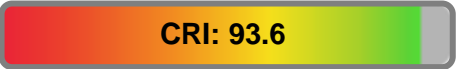


Light efficiency:



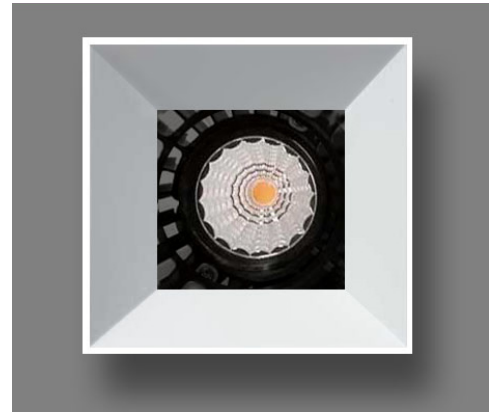
Output: 1425 lm

Light quality:

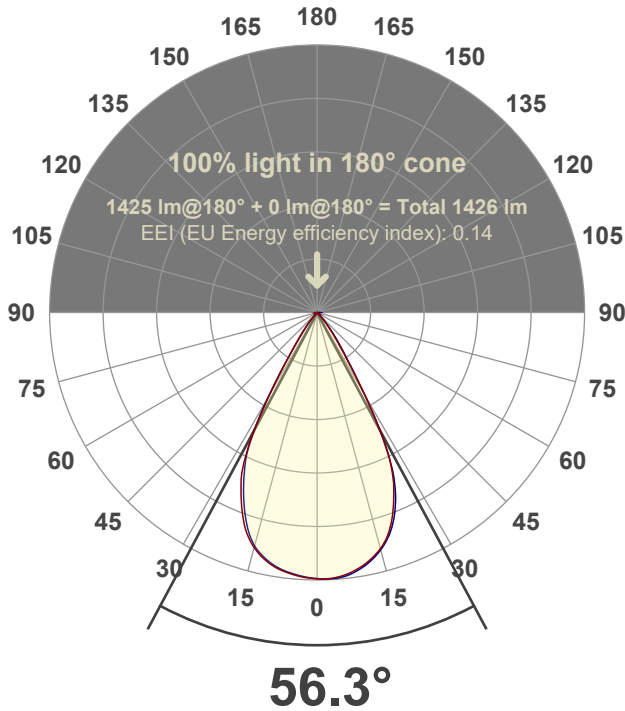


Peak: 1876 cd

Power: 14.2 W



Beam angle



Test number:

GR-O-F-CZ14-30k-WF-SQ-Rev2

Luminaire Model:

Graffiti Open Square Fixed Downlight-CZ14 30k 60° Optic

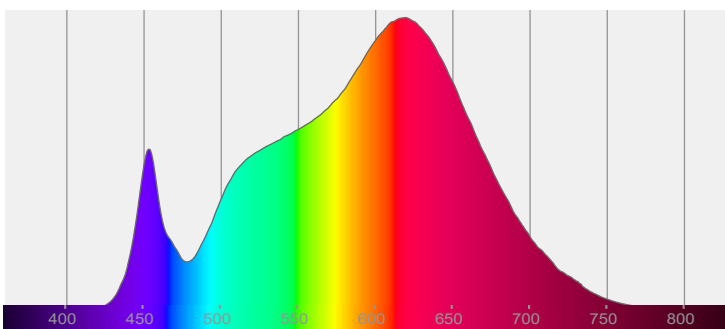
Date and time:

6/30/2022 7:37:56 PM

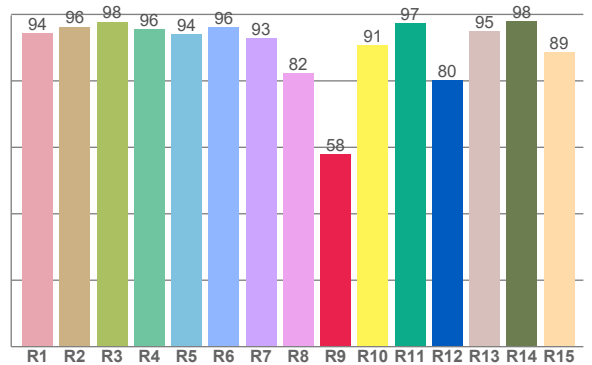
Delivered Lumens

1425

Spectra



CRI: 93.6 (R1-R8)



Color parameters

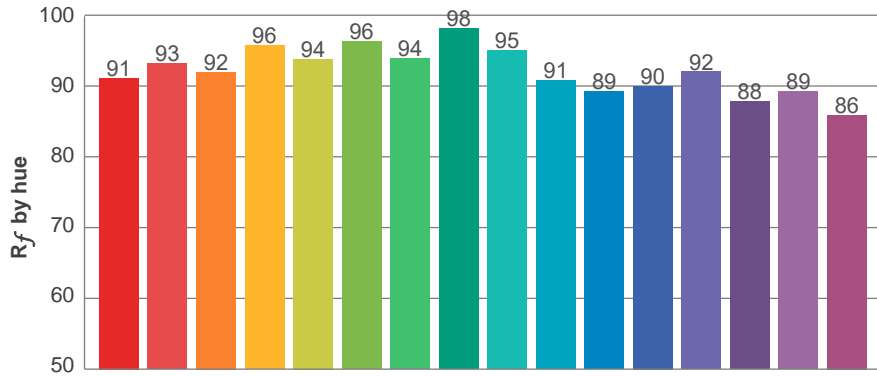
	Color rendering index	Red component	Color fidelity	Color gamut	Color quality scale	Color coordinate cie 1931	Color coordinate cie 1931	Color coordinate	Color coordinate	Color deviation from black body
	CRI	CRI R9	TM30 R _f	TM30 R _g	CQS	x	y	u	v	Δuv
	93.6	57.9	92.3	99.3	91.9	0.437	0.407	0.249	0.348	0.0013

R_f 92.3
Fidelity index R_f

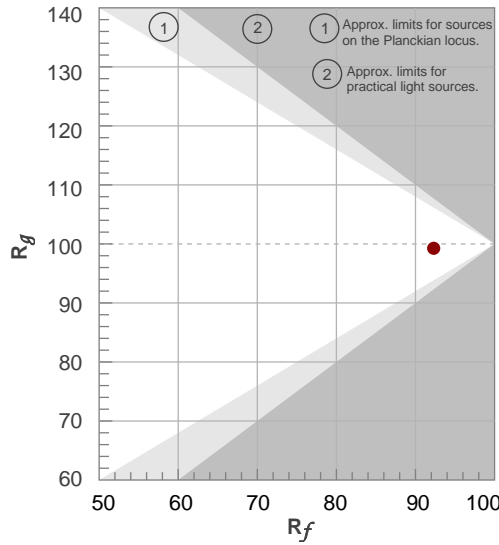
R_g 99.3
Gammut index R_g

TM30: 92.3

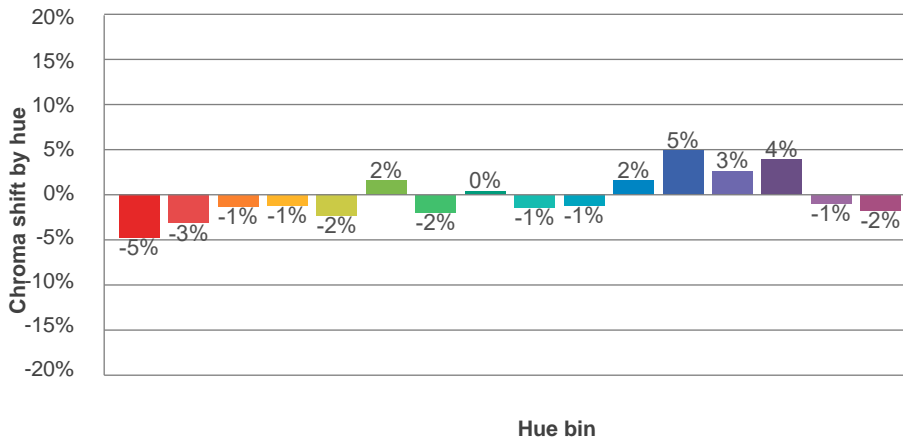
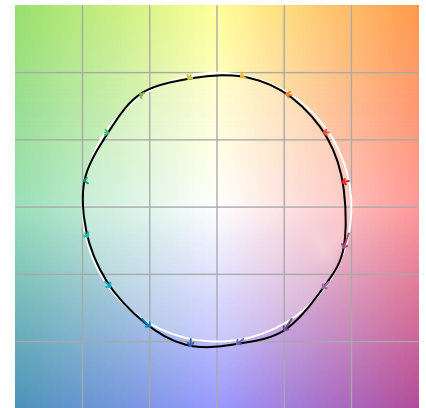
TM-30Color



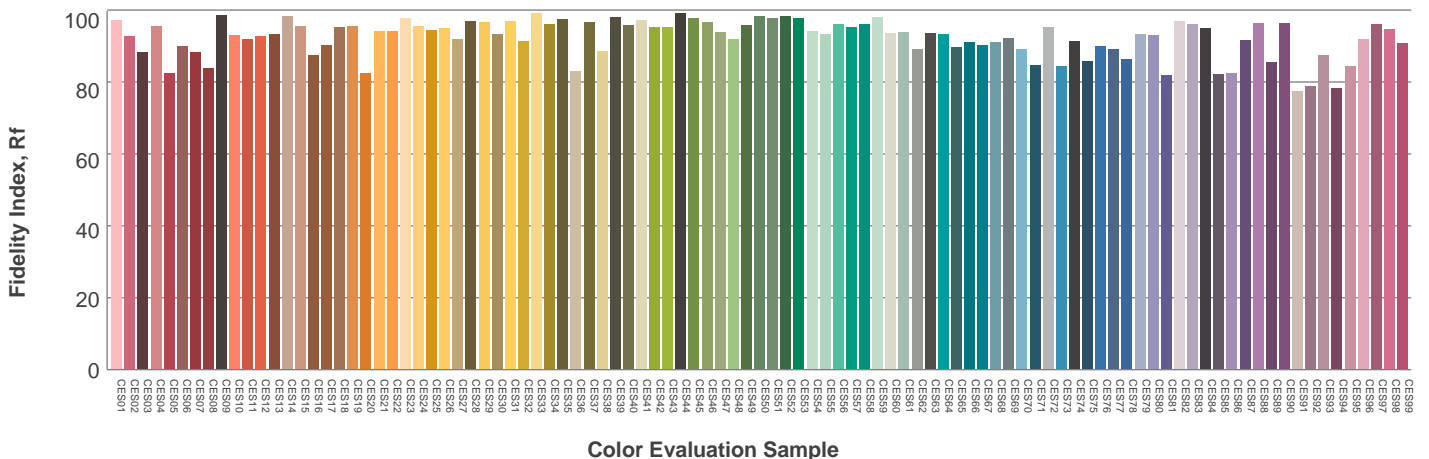
Hue Bin	R_f	Graphic shifts (%)	
		Chroma	Hue
1	91	-5%	0%
2	93	-3%	2%
3	92	-1%	4%
4	96	-1%	1%
5	94	-2%	2%
6	96	2%	1%
7	94	-2%	-1%
8	98	0%	0%
9	95	-1%	3%
10	91	-1%	5%
11	89	2%	8%
12	90	5%	1%
13	92	3%	-5%
14	88	4%	-9%
15	89	-1%	-6%
16	86	-2%	-11%



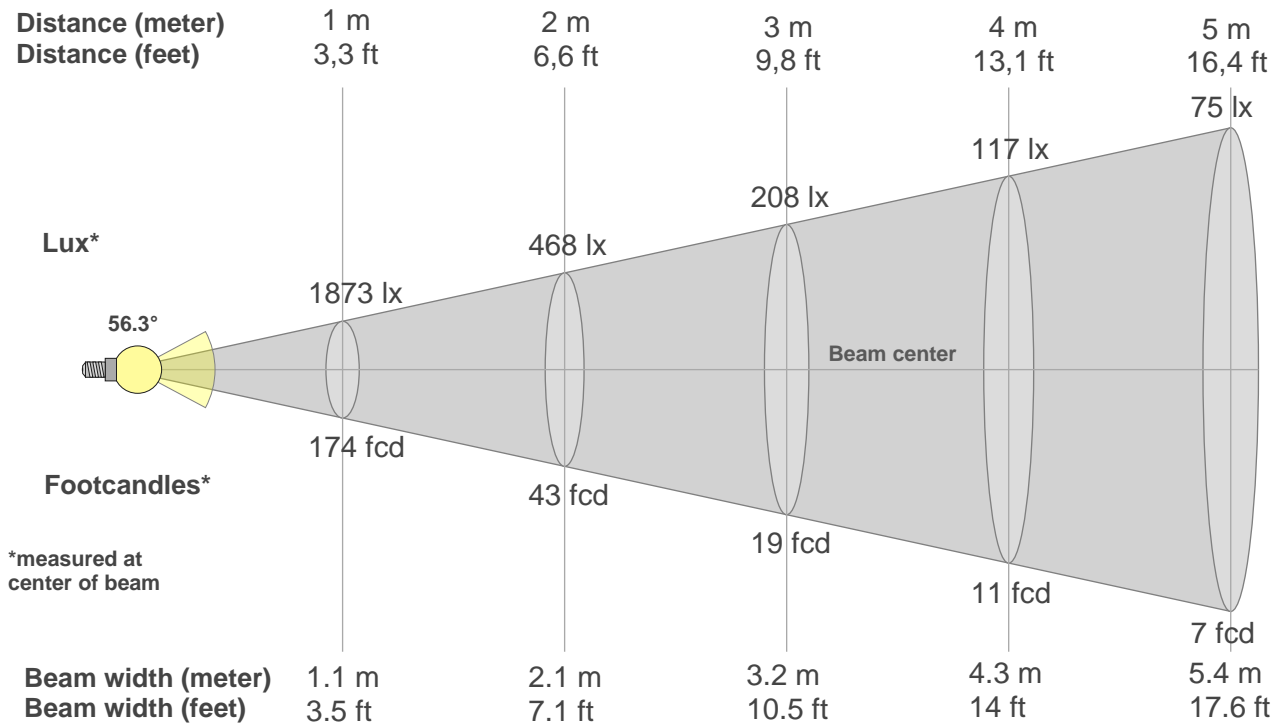
Color vector graphics



Color distortion



Beam details



Beam intensities from 1-20m

1m	2m	3m	4m	5m	6m	7m	8m	9m	10m	11m	12m	13m	14m	15m	16m	17m	18m	19m	20m
3.3ft	6.6ft	9.8ft	13.1ft	16.4ft	19.7ft	23ft	26.2ft	29.5ft	32.8ft	36.1ft	39.4ft	42.7ft	45.9ft	49.2ft	52.5ft	55.8ft	59.1ft	62.3ft	65.6ft
1873lx	468lx	208lx	117lx	75lx	52lx	38lx	29lx	23lx	19lx	15lx	13lx	11lx	10lx	8lx	7lx	6lx	6lx	5lx	5lx
174fcd	43.5fcd	19.3fcd	10.9fcd	7fcd	4.8fcd	3.6fcd	2.7fcd	2.1fcd	1.7fcd	1.4fcd	1.2fcd	1fcd	0.9fcd	0.8fcd	0.7fcd	0.6fcd	0.5fcd	0.5fcd	0.4fcd

Intensities in 0° c-plane

0°	2°	4°	6°	8°	10°	12°	14°	16°	18°	20°	22°	24°	26°	28°	30°	32°	34°	36°	38°
1873	1874	1869	1857	1838	1813	1781	1742	1693	1629	1545	1440	1324	1174	965	704	451	310	218	152
100%	100%	100%	99%	98%	97%	95%	93%	90%	87%	82%	77%	71%	63%	52%	38%	24%	17%	12%	8%

Intensities in 90° c-plane

0°	2°	4°	6°	8°	10°	12°	14°	16°	18°	20°	22°	24°	26°	28°	30°	32°	34°	36°	38°
1873	1876	1875	1866	1848	1823	1792	1753	1704	1643	1566	1469	1348	1191	954	697	489	345	253	181
100%	100%	100%	100%	99%	97%	96%	94%	91%	88%	84%	78%	72%	64%	51%	37%	26%	18%	14%	10%

Intensities in 180° c-plane

0°	2°	4°	6°	8°	10°	12°	14°	16°	18°	20°	22°	24°	26°	28°	30°	32°	34°	36°	38°
1873	1869	1860	1847	1830	1807	1776	1736	1686	1618	1529	1427	1314	1173	966	695	464	312	216	148
100%	100%	99%	99%	98%	97%	95%	93%	90%	86%	82%	76%	70%	63%	52%	37%	25%	17%	12%	8%

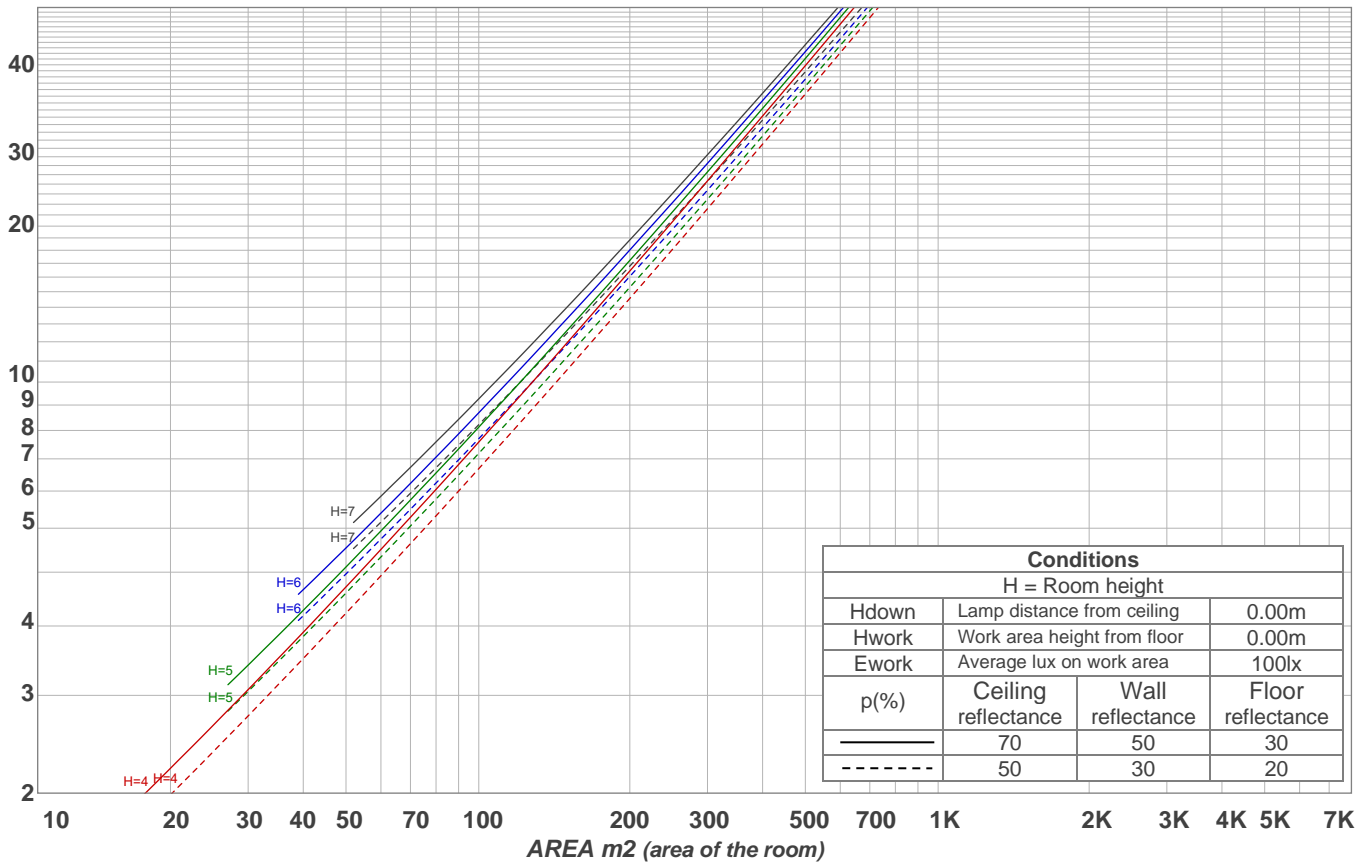
Intensities in 270° c-plane

0°	2°	4°	6°	8°	10°	12°	14°	16°	18°	20°	22°	24°	26°	28°	30°	32°	34°	36°	38°
1873	1865	1854	1840	1823	1800	1766	1724	1666	1588	1492	1385	1268	1139	953	716	470	275	183	122
100%	100%	99%	98%	97%	96%	94%	92%	89%	85%	80%	74%	68%	61%	51%	38%	25%	15%	10%	6%

Beam angle 50%	Field angle 10%	Cutoff angle 2,5%	Intensity ratio in 120° cone	Intensity ratio in 90° cone
56.3°	73.6°	86.7°	99.2%	98.6%

LAMPS (number of lamps)
50

Light planning Luminaire budgetary diagram



Luminaire budgetary diagram AREA m2 (area of the room) Coefficients of Utilization

Ceiling reflectance	80				70				50			30			10			0			
Wall reflectance	70	50	30	10	70	50	30	10	50	30	10	50	30	10	50	30	10	50	30	10	0
Floor reflectance	20	20	20	20	20	20	20	20	20	20	20	20	20	20	20	20	20	20	20	20	0
RCR	(RCR: Room Cavity Ratio)																				
	Room Values are expressed as percentage of Lumens delivered to the task surface																				
0	119	119	119	119	116	116	116	116	111	111	111	106	106	106	102	102	102	100	100		
1	114	111	109	107	111	109	107	105	105	103	102	101	100	99	98	97	96	94	94		
2	109	104	100	97	107	102	99	96	99	96	94	96	94	92	94	92	90	89	89		
3	104	98	93	90	102	97	92	89	94	90	87	92	89	86	89	87	85	83	83		
4	99	92	87	83	97	91	86	83	89	85	82	87	84	81	85	82	80	78	78		
5	95	87	82	78	93	86	81	77	84	80	77	83	79	76	81	78	75	74	74		
6	90	82	77	73	89	82	76	73	80	75	72	79	75	72	77	74	71	70	70		
7	86	78	72	69	85	77	72	68	76	71	68	75	71	68	74	70	67	66	66		
8	83	74	68	65	82	73	68	65	72	68	64	71	67	64	70	67	64	62	62		
9	79	70	65	61	78	70	65	61	69	64	61	68	64	61	67	63	60	59	59		
10	76	67	61	58	75	66	61	58	66	61	58	65	61	58	64	60	57	56	56		

Zonal Lumen Summary

0°-10°	10°-20°	20°-30°	30°-40°	40°-50°	50°-60°	60°-70°	70°-80°	80°-90°
176 lm	478 lm	545 lm	184 lm	28.2 lm	3.60 lm	3.31 lm	3.91 lm	3.40 lm
90°-100°	100°-110°	110°-120°	120°-130°	130°-140°	140°-150°	150°-160°	160°-170°	170°-180°
0.000 lm	0.000 lm	0.000 lm	0.000 lm	0.000 lm	0.000 lm	0.000 lm	0.000 lm	0.000 lm