

Light efficiency:



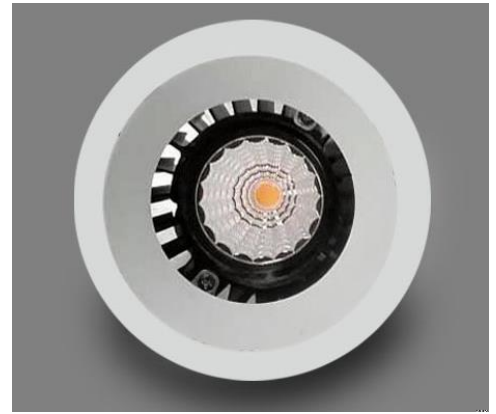
Output: 1981 lm

Light quality:

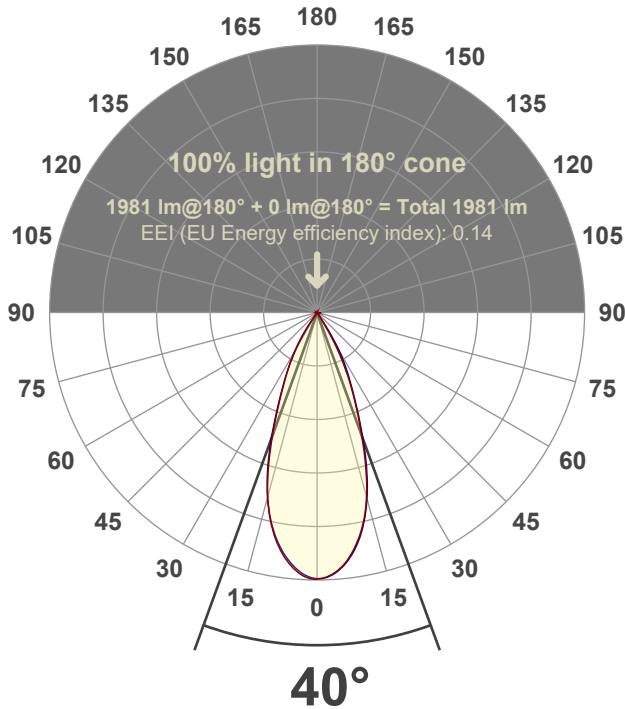


Peak: 4365 cd

Power: 20.7 W



Beam angle



Test number:

GR-O-F-CZ20-30k-FL-RD-Rev2

Luminaire Model:

Graffiti Open Round Fixed Downlight-CZ20 30k 38° Optic

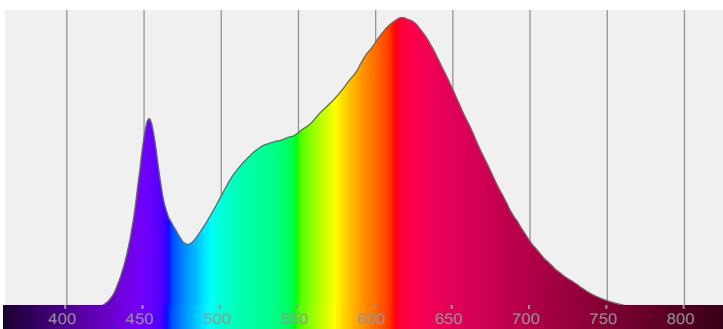
Date and time:

3/2/2022 10:51:08 PM

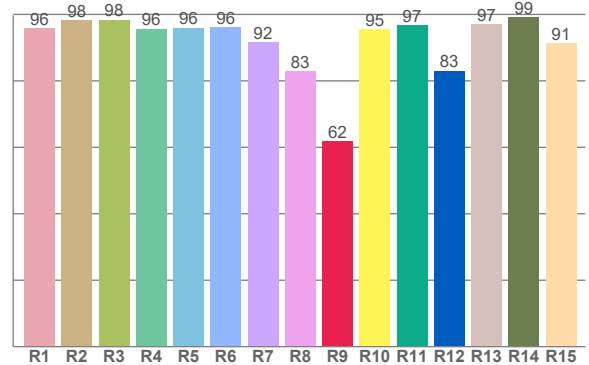
Delivered Lumens

1981

Spectra



CRI: 94.3 (R1-R8)



Color parameters

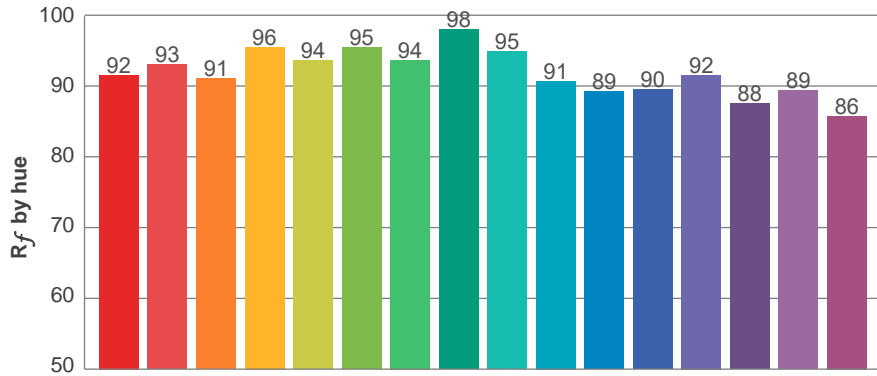
	Color rendering index	Red component	Color fidelity	Color gamut	Color quality scale	Color coordinate cie 1931	Color coordinate cie 1931	Color coordinate	Color coordinate	Color deviation from black body
	CRI	CRI R9	TM30 R _f	TM30 R _g	CQS	x	y	u	v	Δuv
	94.3	61.9	92.1	100.4	91.7	0.424	0.393	0.247	0.343	-0.0025

R_f 92.1
Fidelity index R_f

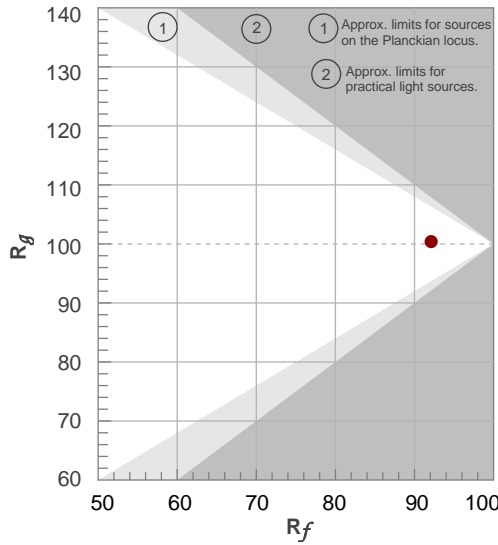
R_g 100.4
Gammut index R_g

TM30: 92.1

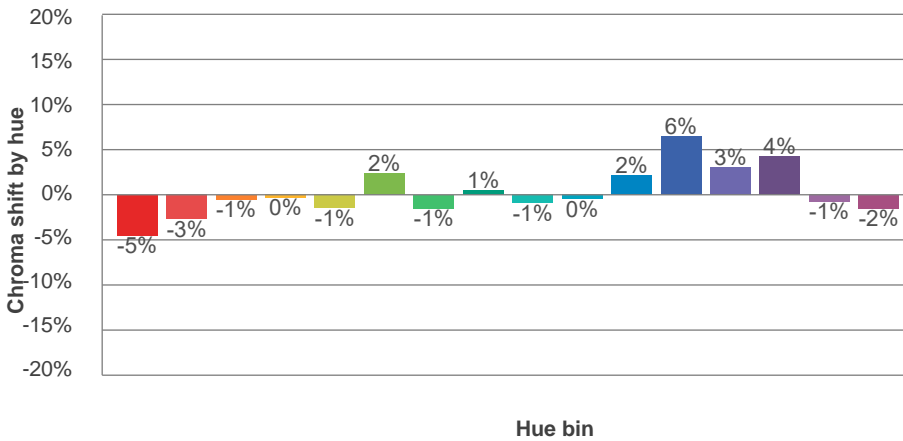
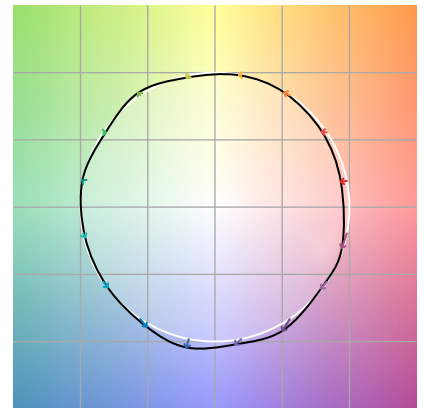
TM-30Color



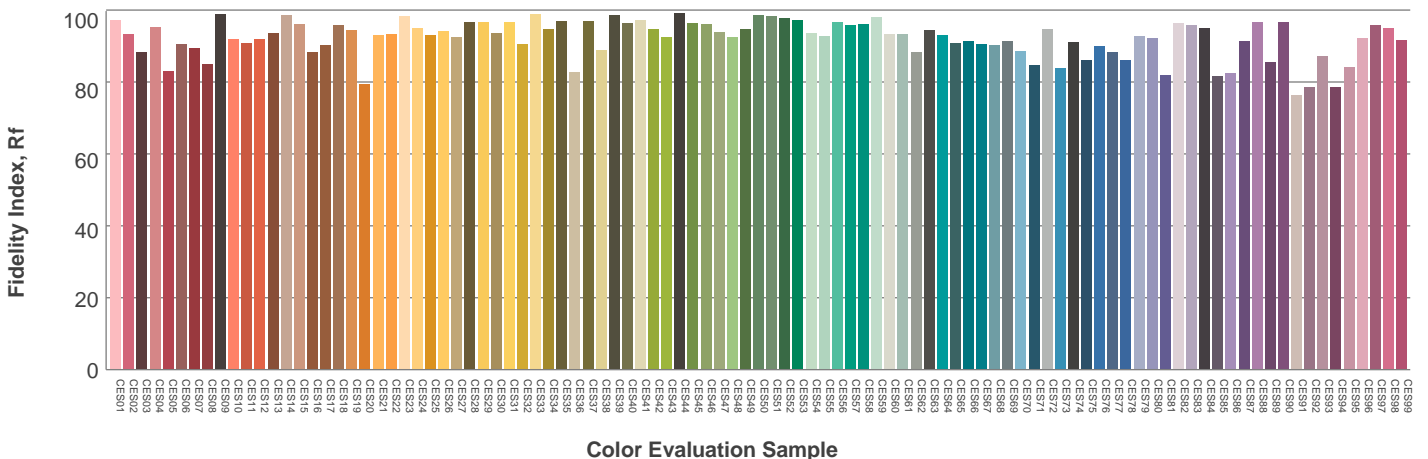
Hue Bin	R_f	Graphic shifts (%)	
		Chroma	Hue
1	92	-5%	0%
2	93	-3%	3%
3	91	-1%	4%
4	96	0%	2%
5	94	-1%	2%
6	95	2%	0%
7	94	-1%	-1%
8	98	1%	0%
9	95	-1%	3%
10	91	0%	5%
11	89	2%	7%
12	90	6%	0%
13	92	3%	-5%
14	88	4%	-9%
15	89	-1%	-6%
16	86	-2%	-11%



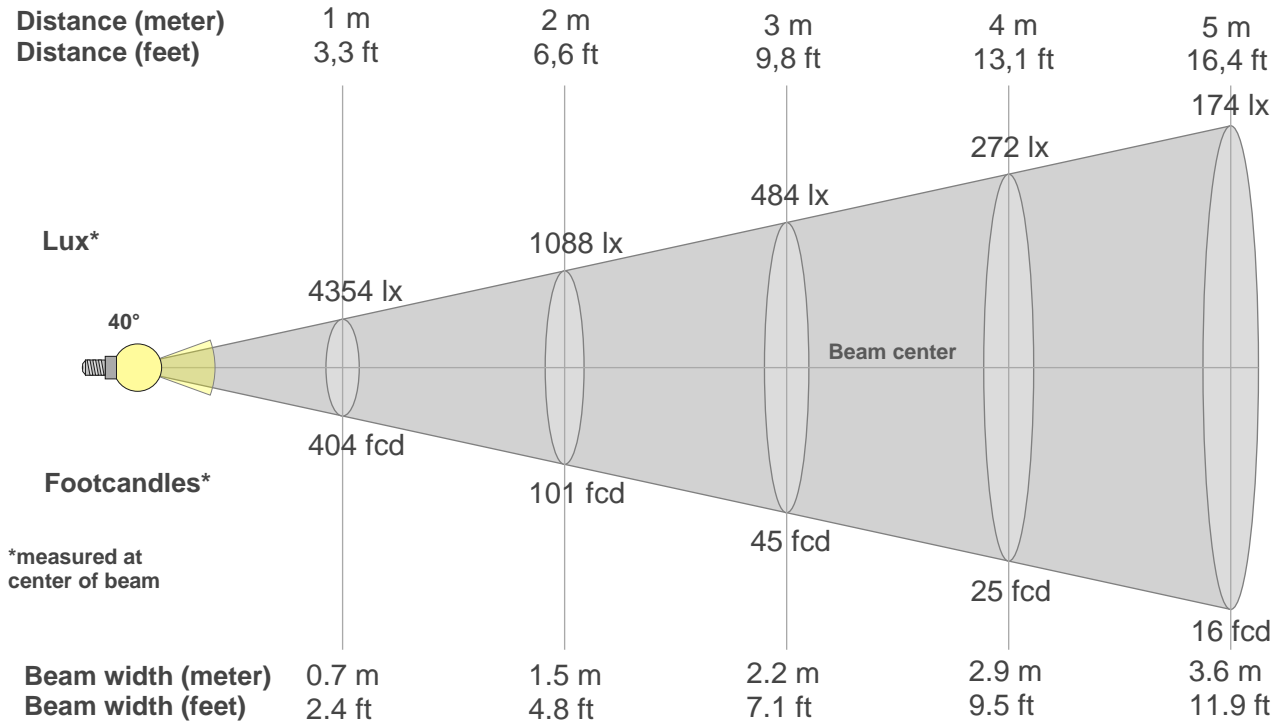
Color vector graphics



Color distortion



Beam details



Beam intensities from 1-20m

1m	2m	3m	4m	5m	6m	7m	8m	9m	10m	11m	12m	13m	14m	15m	16m	17m	18m	19m	20m
3.3ft	6.6ft	9.8ft	13.1ft	16.4ft	19.7ft	23ft	26.2ft	29.5ft	32.8ft	36.1ft	39.4ft	42.7ft	45.9ft	49.2ft	52.5ft	55.8ft	59.1ft	62.3ft	65.6ft
4354lx	1088lx	484lx	272lx	174lx	121lx	89lx	68lx	54lx	44lx	36lx	30lx	26lx	22lx	19lx	17lx	15lx	13lx	12lx	11lx
404.5fcd	101.1fcd	44.9fcd	25.3fcd	16.2fcd	11.2fcd	8.3fcd	6.3fcd	5fcd	4fcd	3.3fcd	2.8fcd	2.4fcd	2.1fcd	1.8fcd	1.6fcd	1.4fcd	1.2fcd	1.1fcd	1fcd

Intensities in 0° c-plane

0°	2°	4°	6°	8°	10°	12°	14°	16°	18°	20°	22°	24°	26°	28°	30°	32°	34°	36°	38°
4354	4329	4262	4152	3993	3800	3568	3289	2954	2555	2146	1776	1449	1145	845	567	306	106	14	4
100%	99%	98%	95%	92%	87%	82%	76%	68%	59%	49%	41%	33%	26%	19%	13%	7%	2%	0%	0%

Intensities in 90° c-plane

0°	2°	4°	6°	8°	10°	12°	14°	16°	18°	20°	22°	24°	26°	28°	30°	32°	34°	36°	38°
4354	4337	4274	4163	4013	3824	3592	3314	2989	2610	2205	1823	1491	1216	984	749	472	208	40	4
100%	100%	98%	96%	92%	88%	83%	76%	69%	60%	51%	42%	34%	28%	23%	17%	11%	5%	1%	0%

Intensities in 180° c-plane

0°	2°	4°	6°	8°	10°	12°	14°	16°	18°	20°	22°	24°	26°	28°	30°	32°	34°	36°	38°
4354	4339	4271	4158	4007	3810	3571	3285	2947	2558	2146	1766	1446	1186	966	759	547	333	125	21
100%	100%	98%	96%	92%	88%	82%	75%	68%	59%	49%	41%	33%	27%	22%	17%	13%	8%	3%	0%

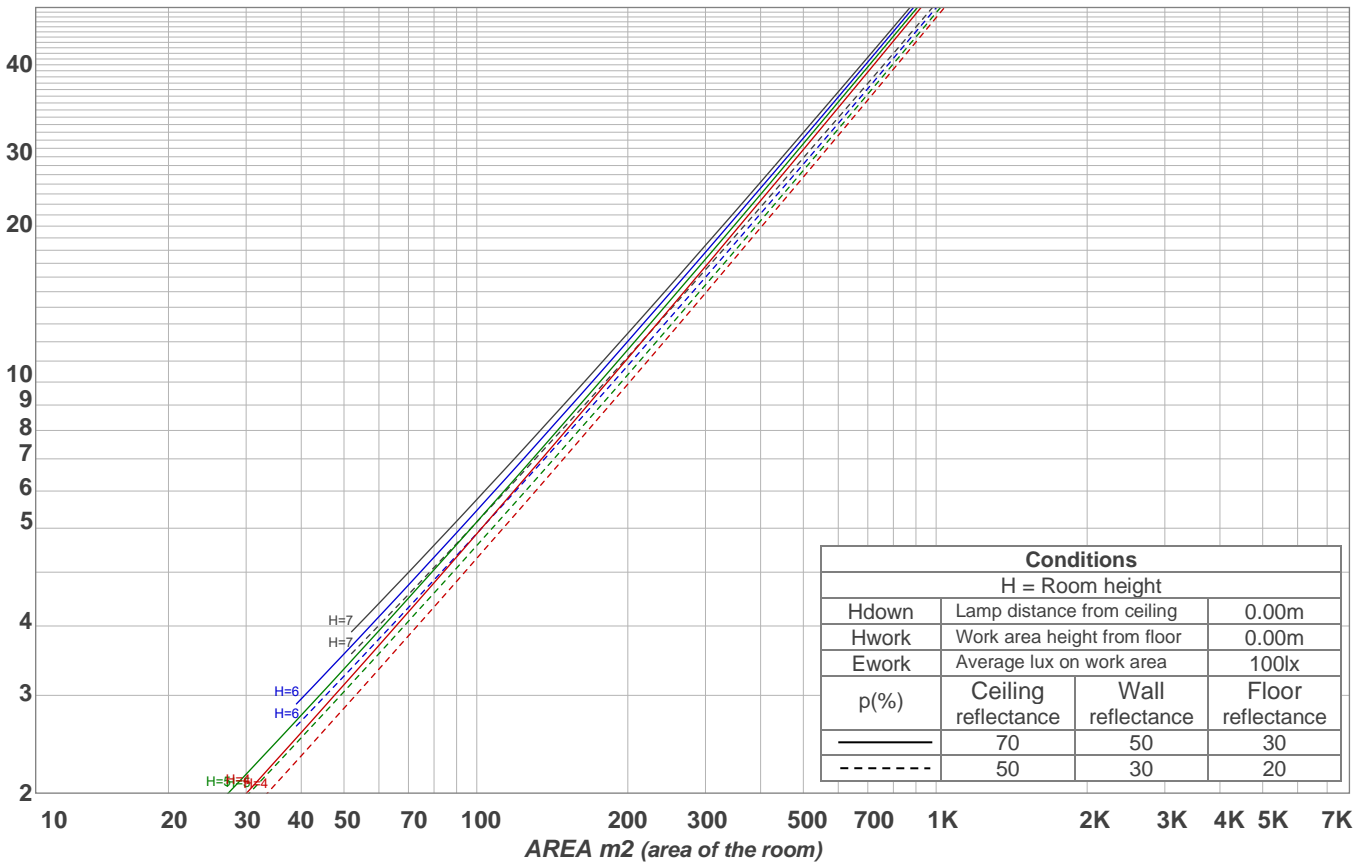
Intensities in 270° c-plane

0°	2°	4°	6°	8°	10°	12°	14°	16°	18°	20°	22°	24°	26°	28°	30°	32°	34°	36°	38°
4354	4316	4237	4120	3971	3783	3554	3284	2966	2601	2204	1805	1474	1200	952	712	478	227	60	8
100%	99%	97%	95%	91%	87%	82%	75%	68%	60%	51%	41%	34%	28%	22%	16%	11%	5%	1%	0%

Beam angle 50%	Field angle 10%	Cutoff angle 2,5%	Intensity ratio in 120° cone	Intensity ratio in 90° cone
40°	64.3°	70.2°	99.5%	99.4%

LAMPS (number of lamps)
50

Light planning Luminaire budgetary diagram



Luminaire budgetary diagram AREA m2 (area of the room) Coefficients of Utilization

Ceiling reflectance	80				70				50			30			10			0			
Wall reflectance	70	50	30	10	70	50	30	10	50	30	10	50	30	10	50	30	10	50	30	10	0
Floor reflectance	20	20	20	20	20	20	20	20	20	20	20	20	20	20	20	20	20	20	20	20	0
RCR	(RCR: Room Cavity Ratio)																				
	Room Values are expressed as percentage of Lumens delivered to the task surface																				
0	119	119	119	119	116	116	116	116	111	111	111	106	106	106	102	102	102	100	100	100	100
1	114	112	110	108	112	110	108	106	106	104	103	102	101	100	99	98	97	95	95	95	95
2	110	106	102	100	108	104	101	99	101	99	96	98	96	94	95	94	92	91	91	91	91
3	106	100	96	93	104	99	95	92	97	93	91	94	92	89	92	90	88	87	87	87	87
4	102	96	91	88	100	94	90	87	92	89	86	91	88	85	89	86	84	83	83	83	83
5	98	91	86	83	96	90	86	83	89	85	82	87	84	81	86	83	80	79	79	79	79
6	94	87	82	79	93	86	82	79	85	81	78	84	80	78	82	79	77	76	76	76	76
7	91	83	78	75	90	83	78	75	82	77	75	80	77	74	79	76	74	73	73	73	73
8	88	80	75	72	87	79	75	72	78	74	71	77	74	71	77	73	71	70	70	70	70
9	85	77	72	69	84	76	72	69	75	71	68	75	71	68	74	70	68	67	67	67	67
10	82	74	69	66	81	73	69	66	73	69	66	72	68	65	71	68	65	64	64	64	64

Zonal Lumen Summary

0°-10°	10°-20°	20°-30°	30°-40°	40°-50°	50°-60°	60°-70°	70°-80°	80°-90°
389 lm	849 lm	608 lm	123 lm	1.31 lm	2.08 lm	2.48 lm	2.84 lm	3.64 lm
90°-100°	100°-110°	110°-120°	120°-130°	130°-140°	140°-150°	150°-160°	160°-170°	170°-180°
0.000 lm	0.000 lm	0.000 lm	0.000 lm	0.000 lm	0.000 lm	0.000 lm	0.000 lm	0.000 lm