

Light efficiency:



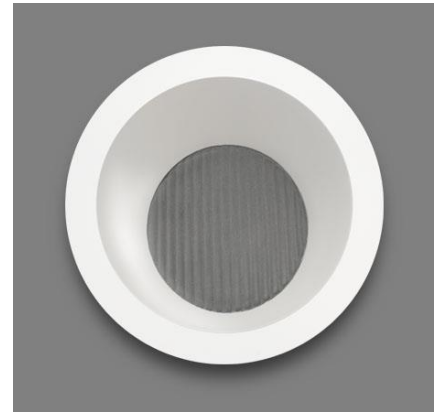
Output: 598 lm

Light quality:

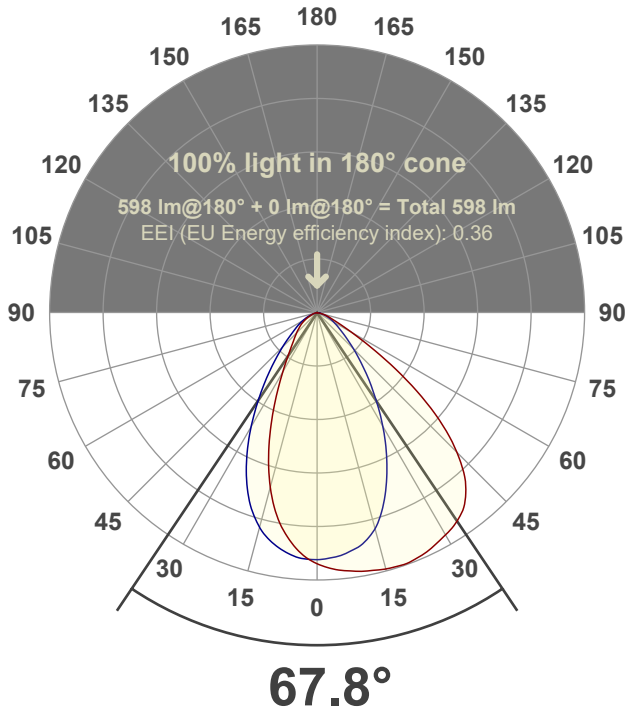


Peak: 438 cd

Power: 15.0 W



Beam angle



Test number:

GR-W-A14-2722-RD-Rev2

Luminaire Model:

Graffiti Wallwash Round-A14-2722

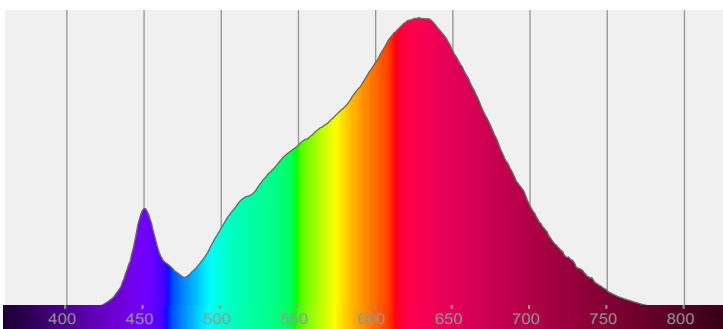
Date and time:

7/7/2022 1:43:10 PM

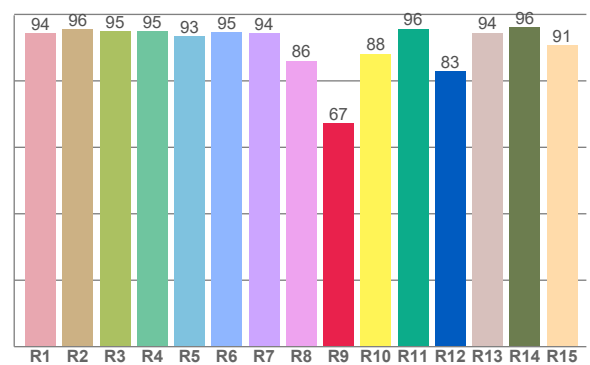
Delivered Lumens

598

Spectra



CRI: 93.5 (R1-R8)



Color parameters

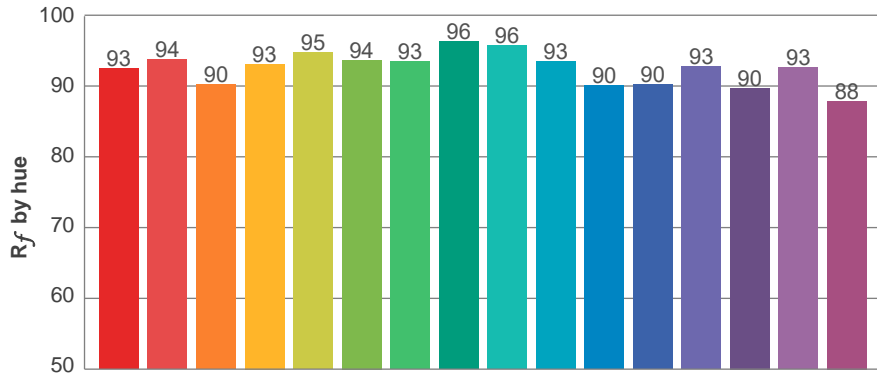
	Color rendering index	Red component	Color fidelity	Color gamut	Color quality scale	Color coordinate cie 1931	Color coordinate cie 1931	Color coordinate	Color coordinate	Color deviation from black body
	CRI	CRI R9	TM30 R _f	TM30 R _g	CQS	x	y	u	v	Δuv
	93.5	67.2	92.5	101.0	91.0	0.463	0.413	0.263	0.353	0.0008

R_f 92.5
Fidelity index R_f

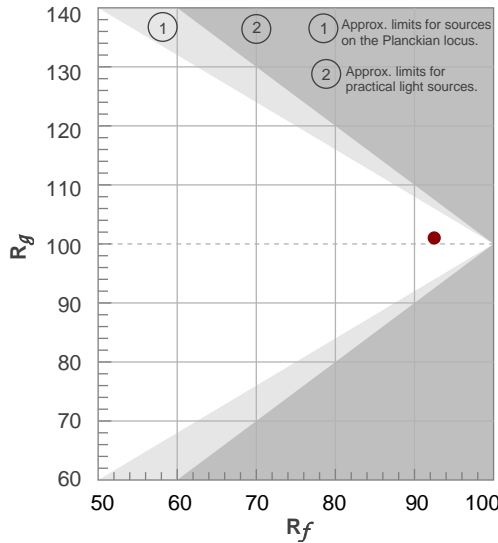
R_g 101.0
Gammut index R_g

TM30: 92.5

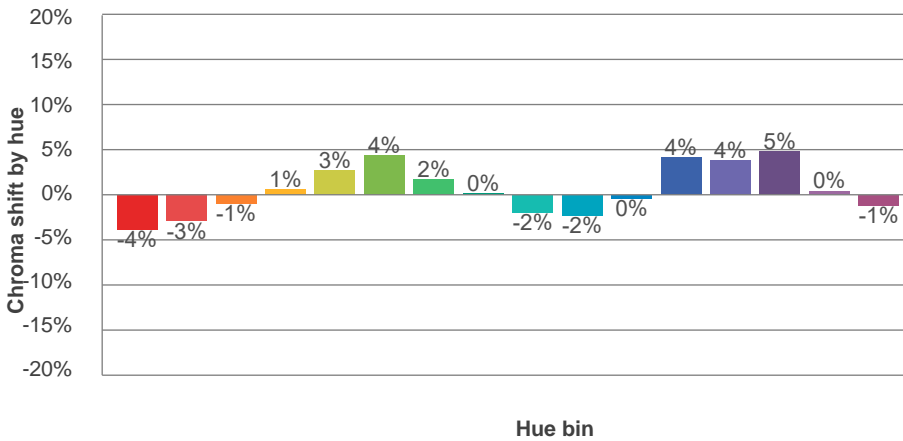
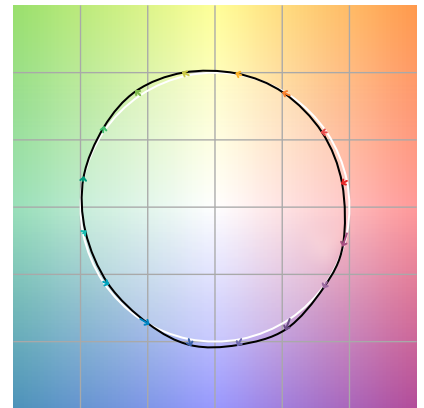
TM-30Color



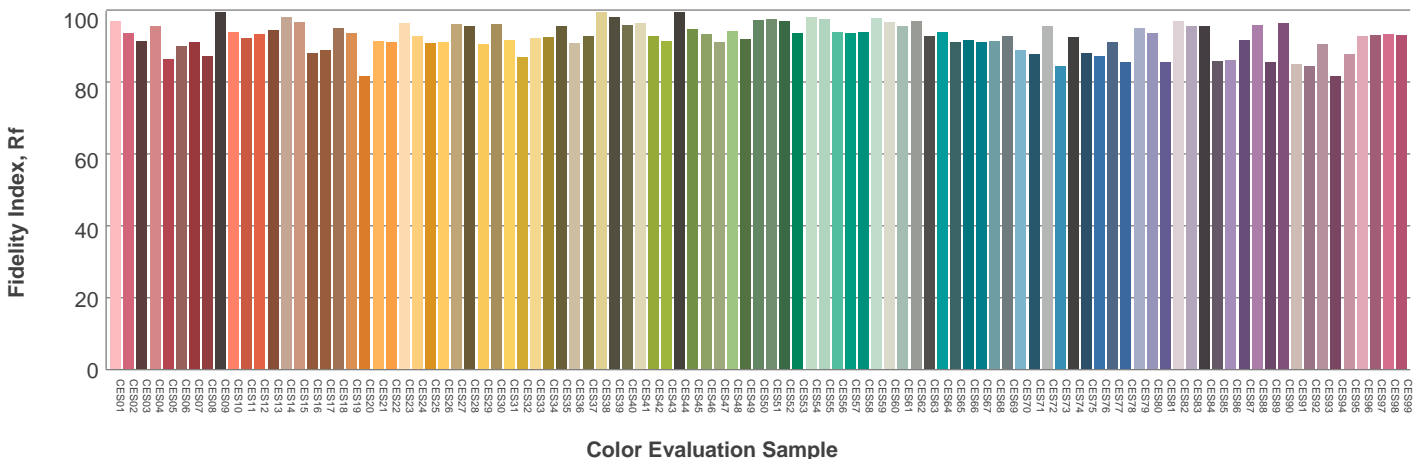
Hue Bin	R_f	Graphic shifts (%)	
		Chroma	Hue
1	93	-4%	-1%
2	94	-3%	2%
3	90	-1%	5%
4	93	1%	4%
5	95	3%	4%
6	94	4%	1%
7	93	2%	-3%
8	96	0%	-2%
9	96	-2%	-1%
10	93	-2%	3%
11	90	0%	7%
12	90	4%	2%
13	93	4%	-3%
14	90	5%	-7%
15	93	0%	-5%
16	88	-1%	-9%



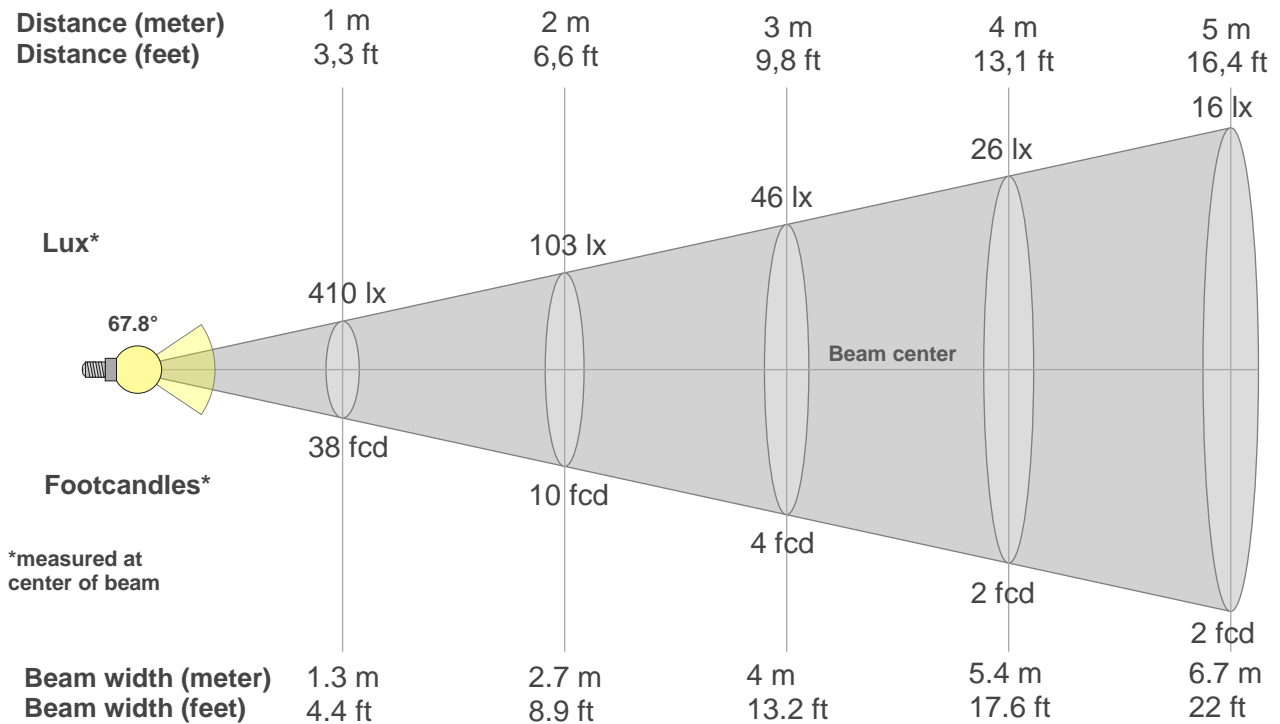
Color vector graphics



Color distortion



Beam details



Beam intensities from 1-20m

1m	2m	3m	4m	5m	6m	7m	8m	9m	10m	11m	12m	13m	14m	15m	16m	17m	18m	19m	20m
3.3ft	6.6ft	9.8ft	13.1ft	16.4ft	19.7ft	23ft	26.2ft	29.5ft	32.8ft	36.1ft	39.4ft	42.7ft	45.9ft	49.2ft	52.5ft	55.8ft	59.1ft	62.3ft	65.6ft
410lx	103lx	46lx	26lx	16lx	11lx	8lx	6lx	5lx	4lx	3lx	3lx	2lx	2lx	2lx	2lx	1lx	1lx	1lx	1lx
38.1fcd	9.5fcd	4.2fcd	2.4fcd	1.5fcd	1.1fcd	0.8fcd	0.6fcd	0.5fcd	0.4fcd	0.3fcd	0.3fcd	0.2fcd	0.2fcd	0.2fcd	0.1fcd	0.1fcd	0.1fcd	0.1fcd	0.1fcd

Intensities in 0° c-plane

0°	5°	10°	15°	20°	25°	30°	35°	40°	45°	50°	55°	60°	65°	70°	75°	80°	85°	90°	95°
410	425	432	436	438	432	422	409	381	326	246	149	72	36	22	14	7	2	1	0
100%	104%	105%	106%	107%	105%	103%	100%	93%	80%	60%	36%	18%	9%	5%	3%	2%	1%	0%	0%

Intensities in 90° c-plane

0°	5°	10°	15°	20°	25°	30°	35°	40°	45°	50°	55°	60°	65°	70°	75°	80°	85°	90°	95°
410	402	391	368	325	272	217	164	121	87	62	45	33	25	17	10	5	3	0	0
100%	98%	95%	90%	79%	66%	53%	40%	29%	21%	15%	11%	8%	6%	4%	2%	1%	1%	0%	0%

Intensities in 180° c-plane

0°	5°	10°	15°	20°	25°	30°	35°	40°	45°	50°	55°	60°	65°	70°	75°	80°	85°	90°	95°
410	389	352	298	232	166	114	80	61	49	39	31	23	16	10	7	5	3	0	0
100%	95%	86%	73%	56%	40%	28%	20%	15%	12%	9%	8%	5%	4%	3%	2%	1%	1%	0%	0%

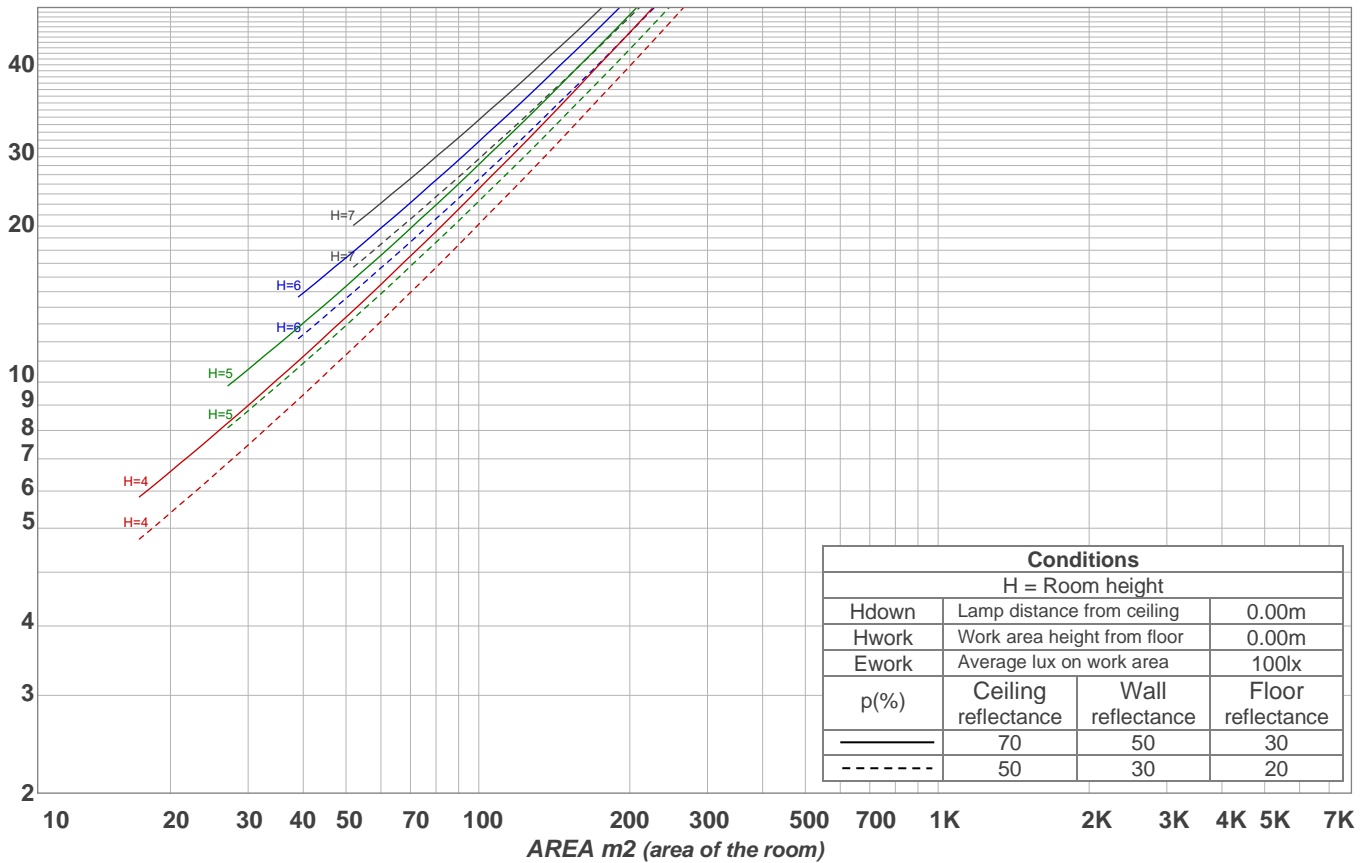
Intensities in 270° c-plane

0°	5°	10°	15°	20°	25°	30°	35°	40°	45°	50°	55°	60°	65°	70°	75°	80°	85°	90°	95°
410	403	389	365	327	276	218	163	117	83	57	42	30	21	13	6	2	1	1	0
100%	98%	95%	89%	80%	67%	53%	40%	29%	20%	14%	10%	7%	5%	3%	1%	1%	0%	0%	0%

Beam angle 50%	Field angle 10%	Cutoff angle 2,5%	Intensity ratio in 120° cone	Intensity ratio in 90° cone
67.8°	111.4°	145.9°	93.9%	76.8%

LAMPS (number of lamps)
50

Light planning Luminaire budgetary diagram



Luminaire budgetary diagram AREA m2 (area of the room) Coefficients of Utilization

Ceiling reflectance	80				70				50			30			10			0			
Wall reflectance	70	50	30	10	70	50	30	10	50	30	10	50	30	10	50	30	10	50	30	10	0
Floor reflectance	20	20	20	20	20	20	20	20	20	20	20	20	20	20	20	20	20	20	20	20	0
RCR	(RCR: Room Cavity Ratio) Room Values are expressed as percentage of Lumens delivered to the task surface																				
0	119	119	119	119	116	116	116	116	111	111	111	106	106	106	102	102	102	100	100	100	
1	112	108	105	102	109	106	103	100	102	99	97	98	96	94	94	93	92	90	90	90	
2	104	98	93	88	102	96	91	87	93	89	85	90	86	83	87	84	82	80	80	80	
3	97	89	82	77	95	87	81	77	84	79	75	82	78	74	79	76	73	71	71	71	
4	90	81	74	68	88	80	73	68	77	72	67	75	70	66	73	69	65	64	64	64	
5	84	74	67	61	83	73	66	61	71	65	60	69	64	60	67	63	59	57	57	57	
6	79	68	60	55	77	67	60	55	65	59	54	64	58	54	62	57	54	52	52	52	
7	74	63	55	50	72	62	55	50	60	54	49	59	53	49	58	53	49	47	47	47	
8	70	58	51	46	68	57	50	45	56	50	45	55	49	45	54	49	45	43	43	43	
9	65	54	47	42	64	53	46	42	52	46	42	51	46	41	50	45	41	40	40	40	
10	62	50	43	39	61	50	43	39	49	43	38	48	42	38	47	42	38	37	37	37	

Zonal Lumen Summary

0°-10°	10°-20°	20°-30°	30°-40°	40°-50°	50°-60°	60°-70°	70°-80°	80°-90°
38.3 lm	103 lm	133 lm	129 lm	102 lm	56.6 lm	24.2 lm	9.78 lm	2.64 lm
90°-100°	100°-110°	110°-120°	120°-130°	130°-140°	140°-150°	150°-160°	160°-170°	170°-180°
0.000 lm	0.000 lm	0.000 lm	0.000 lm	0.000 lm	0.000 lm	0.000 lm	0.000 lm	0.000 lm