

Light efficiency:



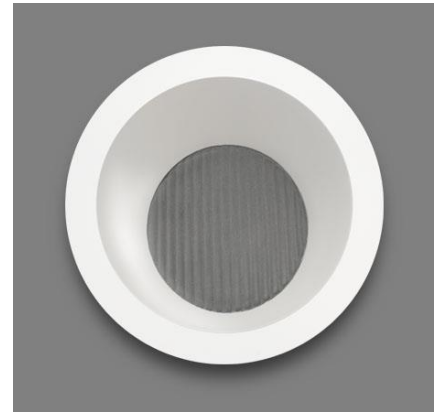
Output: 526 lm

Light quality:

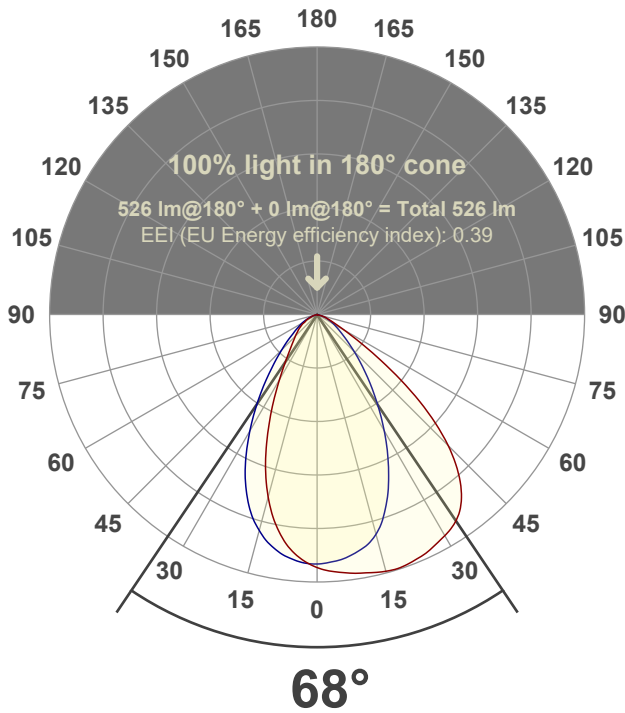


Peak: 387 cd

Power: 14.7 W



Beam angle



Test number:

GR-W-A14-3019-RD-Rev2

Luminaire Model:

Graffiti Wallwash Round A14-3019

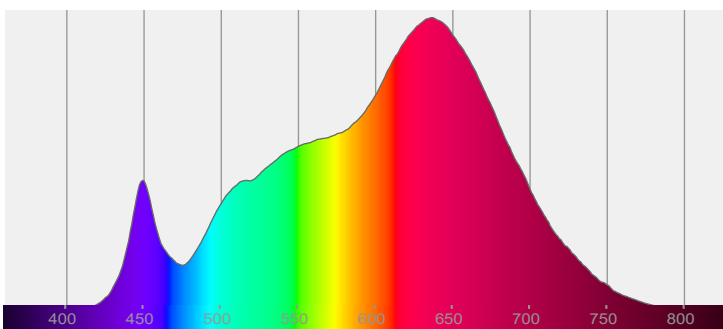
Date and time:

7/7/2022 2:31:28 PM

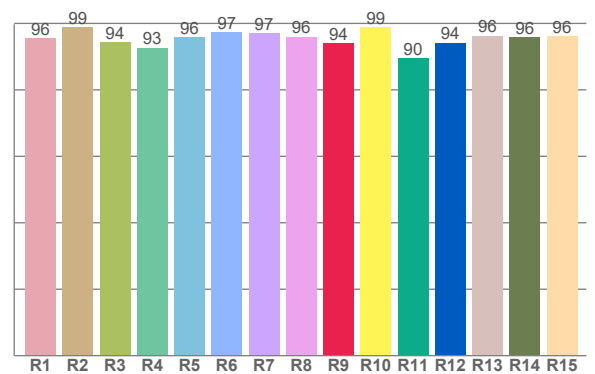
Delivered Lumens

526

Spectra



CRI: 95.9 (R1-R8)



Color parameters

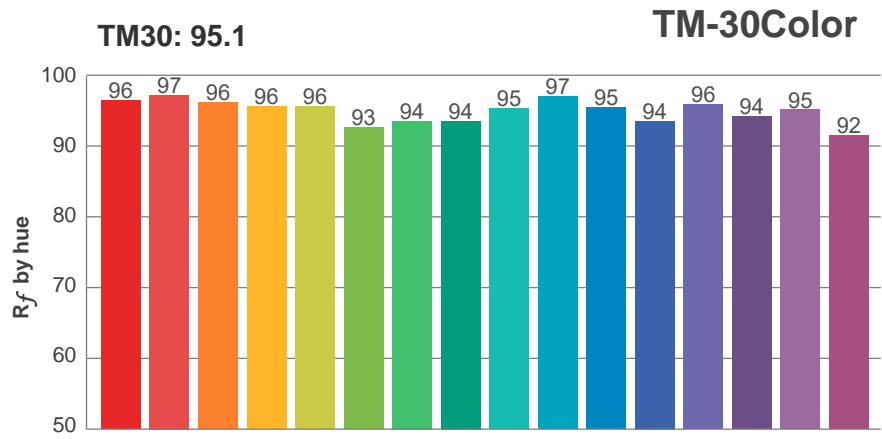
	Color rendering index	Red component	Color fidelity	Color gamut	Color quality scale	Color coordinate cie 1931	Color coordinate cie 1931	Color coordinate	Color coordinate	Color deviation from black body
	CRI	CRI R9	TM30 R _f	TM30 R _g	CQS	x	y	u	v	Δuv
	95.9	94.1	95.1	104.6	94.8	0.439	0.400	0.254	0.347	-0.0020

R_f 95.1

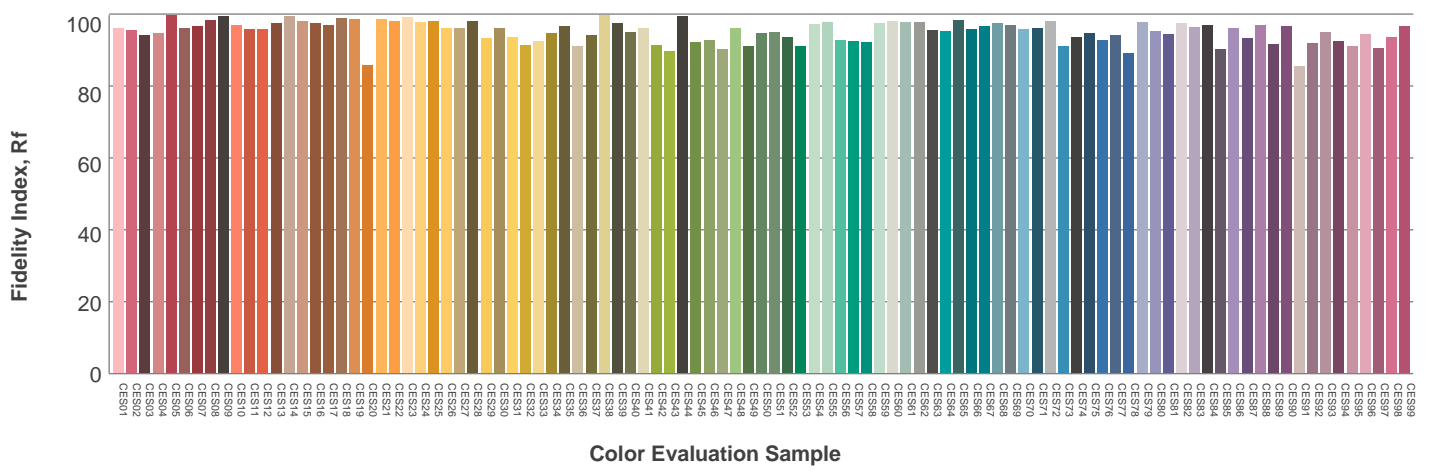
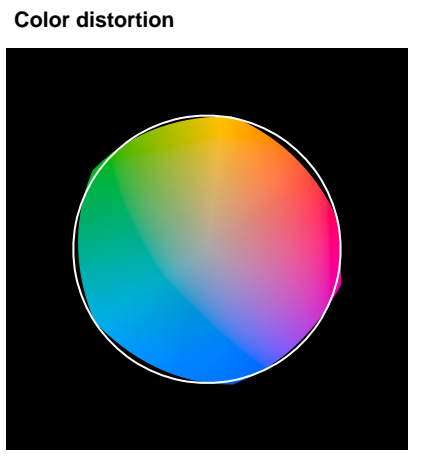
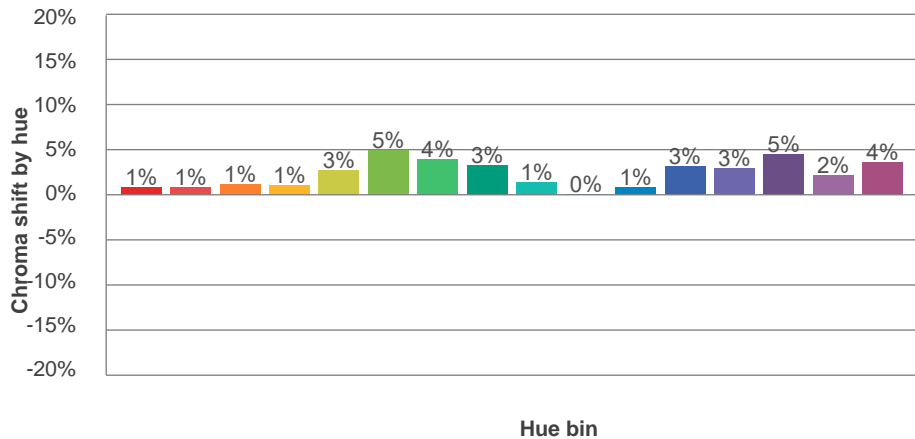
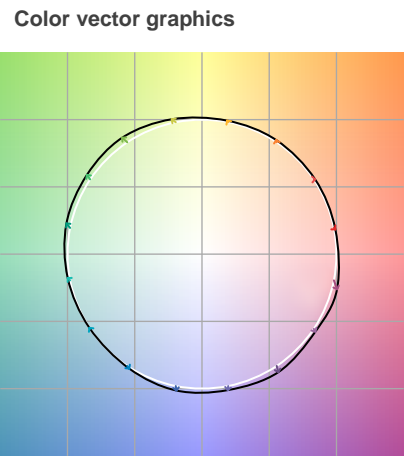
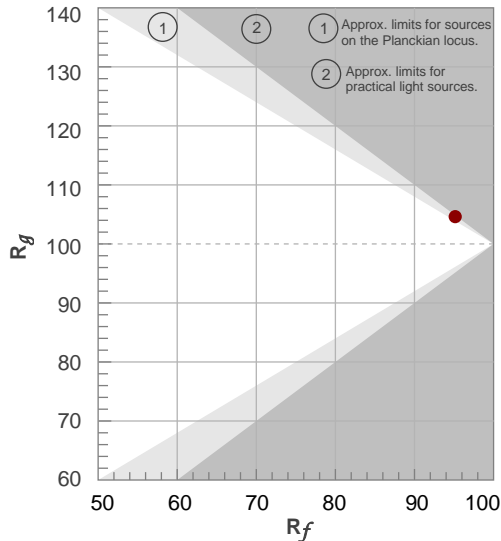
Fidelity index R_f

R_g 104.6

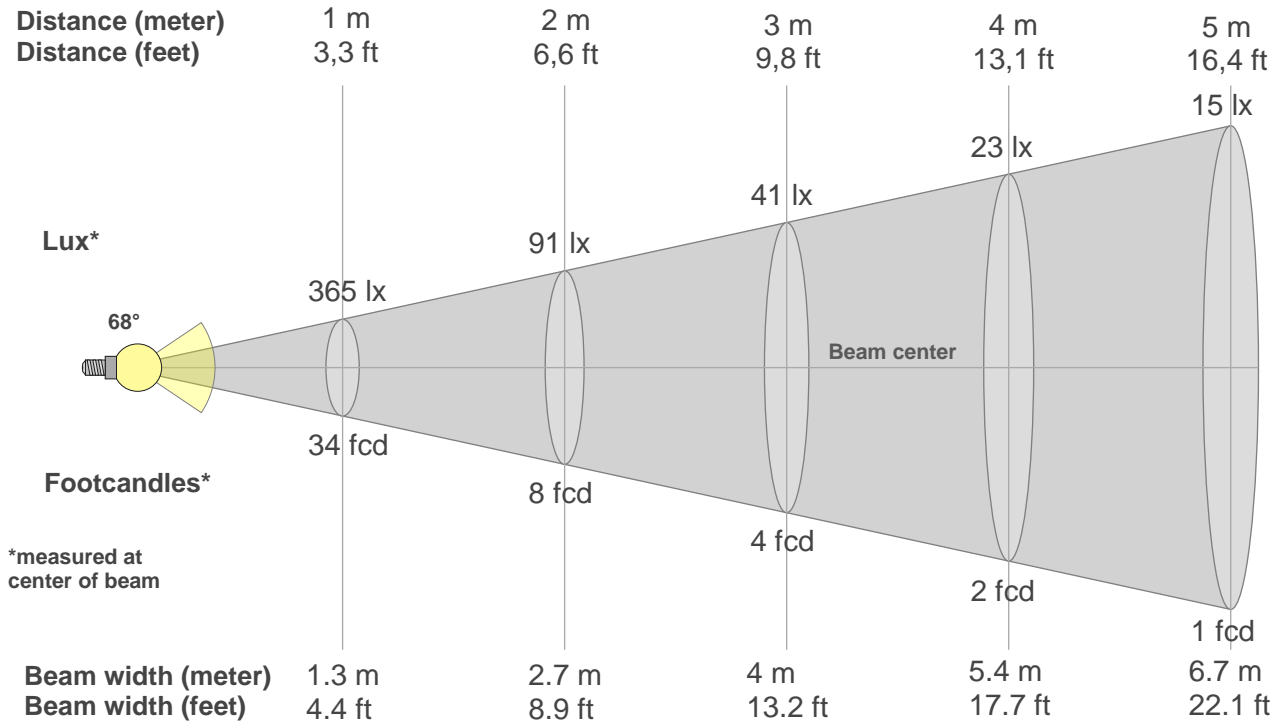
Gammut index R_g



Hue Bin	R_f	Graphic shifts (%)	
		Chroma	Hue
1	96	1%	-1%
2	97	1%	0%
3	96	1%	1%
4	96	1%	1%
5	96	3%	2%
6	93	5%	1%
7	94	4%	-1%
8	94	3%	-3%
9	95	1%	-2%
10	97	0%	-1%
11	95	1%	2%
12	94	3%	1%
13	96	3%	-1%
14	94	5%	-2%
15	95	2%	-1%
16	92	4%	-6%



Beam details



Beam intensities from 1-20m

1m	2m	3m	4m	5m	6m	7m	8m	9m	10m	11m	12m	13m	14m	15m	16m	17m	18m	19m	20m
3.3ft	6.6ft	9.8ft	13.1ft	16.4ft	19.7ft	23ft	26.2ft	29.5ft	32.8ft	36.1ft	39.4ft	42.7ft	45.9ft	49.2ft	52.5ft	55.8ft	59.1ft	62.3ft	65.6ft
365lx	91lx	41lx	23lx	15lx	10lx	7lx	6lx	5lx	4lx	3lx	3lx	2lx	2lx	2lx	1lx	1lx	1lx	1lx	1lx
33.9fcd	8.5fcd	3.8fcd	2.1fcd	1.4fcd	0.9fcd	0.7fcd	0.5fcd	0.4fcd	0.3fcd	0.3fcd	0.2fcd	0.2fcd	0.2fcd	0.2fcd	0.1fcd	0.1fcd	0.1fcd	0.1fcd	0.1fcd

Intensities in 0° c-plane

0°	5°	10°	15°	20°	25°	30°	35°	40°	45°	50°	55°	60°	65°	70°	75°	80°	85°	90°	95°
365	375	381	386	386	380	371	357	325	271	193	107	51	27	16	10	4	1	0	0
100%	103%	104%	106%	106%	104%	102%	98%	89%	74%	53%	29%	14%	7%	4%	3%	1%	0%	0%	0%

Intensities in 90° c-plane

0°	5°	10°	15°	20°	25°	30°	35°	40°	45°	50°	55°	60°	65°	70°	75°	80°	85°	90°	95°
365	358	348	330	294	246	196	149	109	78	55	40	29	21	15	8	4	2	2	0
100%	98%	95%	90%	80%	67%	54%	41%	30%	21%	15%	11%	8%	6%	4%	2%	1%	1%	0%	0%

Intensities in 180° c-plane

0°	5°	10°	15°	20°	25°	30°	35°	40°	45°	50°	55°	60°	65°	70°	75°	80°	85°	90°	95°
365	350	320	275	219	160	111	77	58	45	37	29	21	16	10	7	5	3	2	0
100%	96%	88%	75%	60%	44%	30%	21%	16%	12%	10%	8%	6%	4%	3%	2%	1%	1%	1%	0%

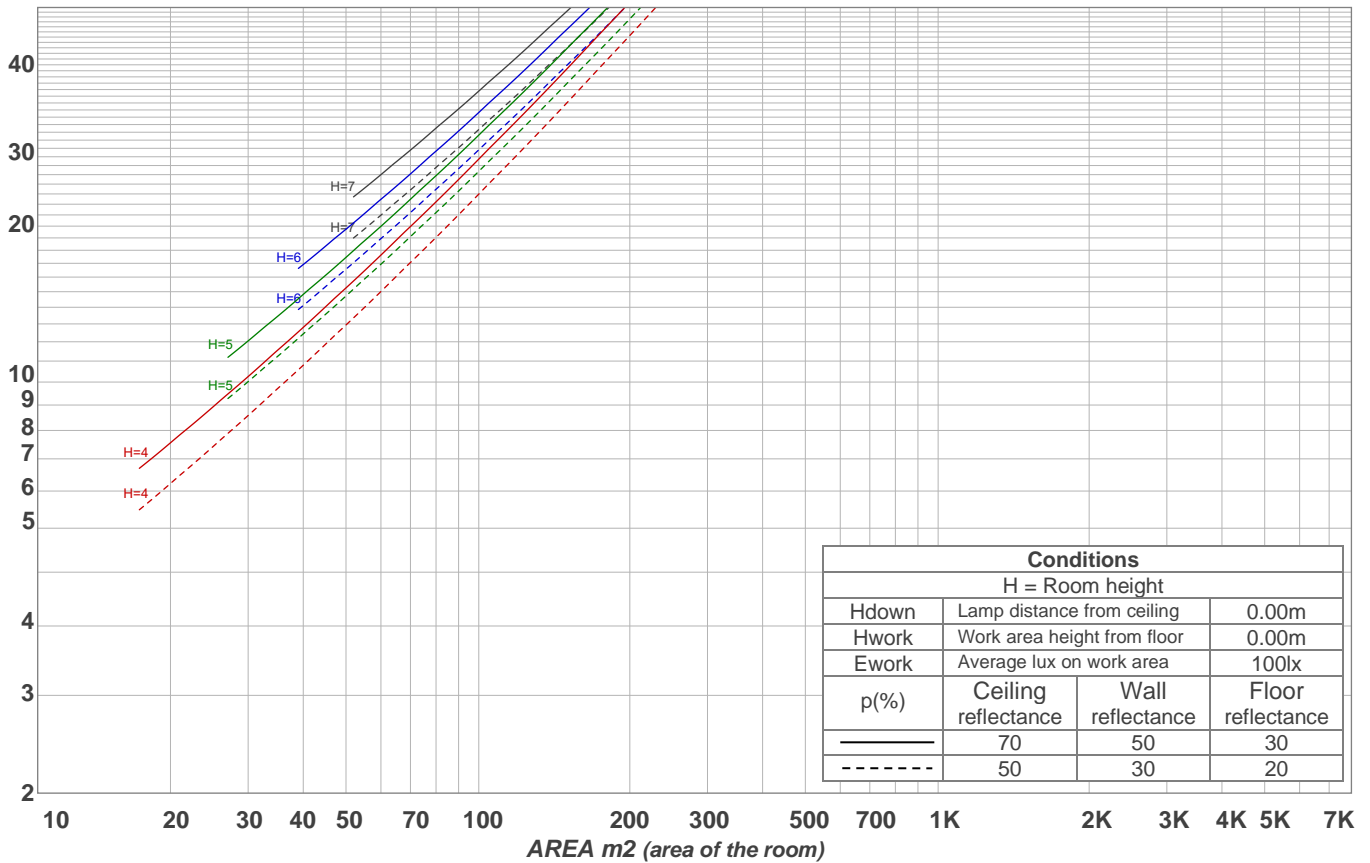
Intensities in 270° c-plane

0°	5°	10°	15°	20°	25°	30°	35°	40°	45°	50°	55°	60°	65°	70°	75°	80°	85°	90°	95°
365	358	346	325	292	247	196	147	105	74	52	37	27	19	12	6	2	1	0	0
100%	98%	95%	89%	80%	68%	54%	40%	29%	20%	14%	10%	7%	5%	3%	2%	1%	0%	0%	0%

Beam angle 50%	Field angle 10%	Cutoff angle 2,5%	Intensity ratio in 120° cone	Intensity ratio in 90° cone
68°	111.3°	145.9°	94.1%	77.8%

LAMPS (number of lamps)
50

Light planning Luminaire budgetary diagram



Luminaire budgetary diagram AREA m2 (area of the room) Coefficients of Utilization

Ceiling reflectance	80				70				50			30			10			0			
Wall reflectance	70	50	30	10	70	50	30	10	50	30	10	50	30	10	50	30	10	50	30	10	0
Floor reflectance	20	20	20	20	20	20	20	20	20	20	20	20	20	20	20	20	20	20	20	20	0
RCR	(RCR: Room Cavity Ratio)																				
	Room Values are expressed as percentage of Lumens delivered to the task surface																				
0	119	119	119	119	116	116	116	116	111	111	111	106	106	106	102	102	102	100	100	100	100
1	112	108	105	102	109	106	103	101	102	100	97	98	96	95	95	93	92	90	90	90	90
2	104	98	93	89	102	96	92	88	93	89	86	90	87	84	87	84	82	80	80	80	80
3	97	89	83	78	95	88	82	77	85	80	76	82	78	74	80	76	73	71	71	71	71
4	91	81	74	69	89	80	73	68	78	72	68	75	71	67	73	69	66	64	64	64	64
5	85	74	67	62	83	73	66	61	71	65	61	70	64	60	68	63	60	58	58	58	58
6	79	68	61	56	78	67	60	55	66	60	55	64	59	55	63	58	54	52	52	52	52
7	74	63	56	51	73	62	55	50	61	55	50	60	54	50	58	53	49	48	48	48	48
8	70	58	51	46	69	58	51	46	57	50	46	55	50	46	54	49	45	44	44	44	44
9	66	54	47	42	65	54	47	42	53	47	42	52	46	42	51	46	42	40	40	40	40
10	62	51	44	39	61	50	44	39	49	43	39	48	43	39	48	42	39	37	37	37	37

Zonal Lumen Summary

0°-10°	10°-20°	20°-30°	30°-40°	40°-50°	50°-60°	60°-70°	70°-80°	80°-90°
34.1 lm	92.3 lm	120 lm	115 lm	87.3 lm	46.5 lm	20.3 lm	8.30 lm	2.29 lm
90°-100°	100°-110°	110°-120°	120°-130°	130°-140°	140°-150°	150°-160°	160°-170°	170°-180°
0.000 lm	0.000 lm	0.000 lm	0.000 lm	0.000 lm	0.000 lm	0.000 lm	0.000 lm	0.000 lm