

Light efficiency:



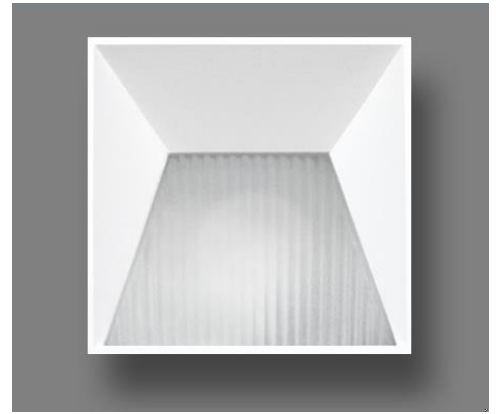
Output: 497 lm

Light quality:

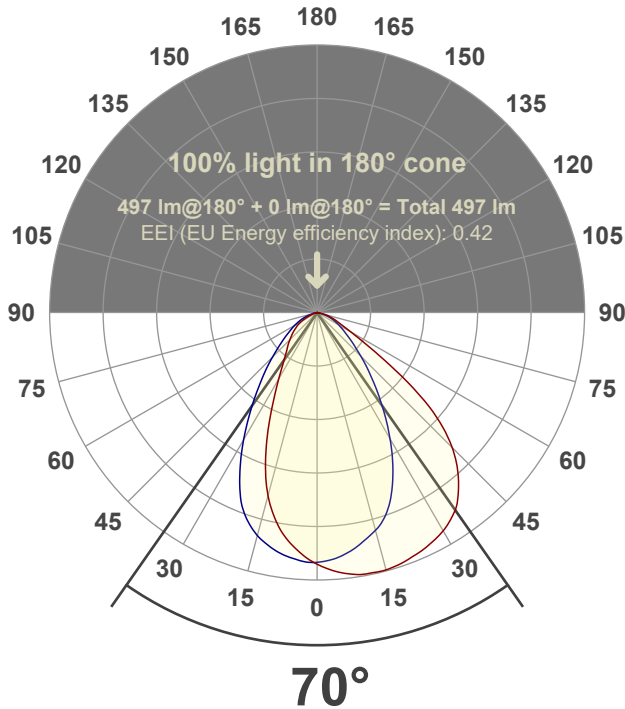


Peak: 336 cd

Power: 14.7 W



Beam angle



Test number:

GR-W-A14-3019-SQ-Rev2

Luminaire Model:

Graffiti Wallwash Square A14-3019

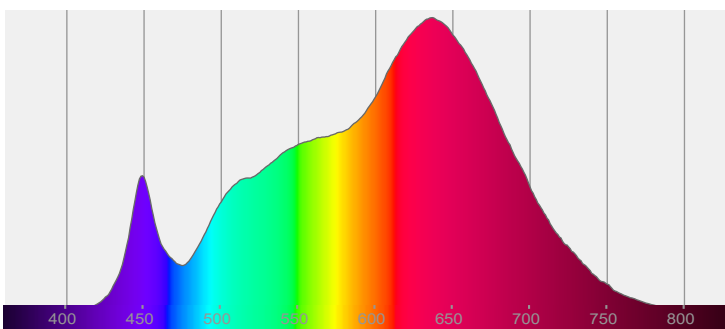
Date and time:

7/7/2022 2:18:07 PM

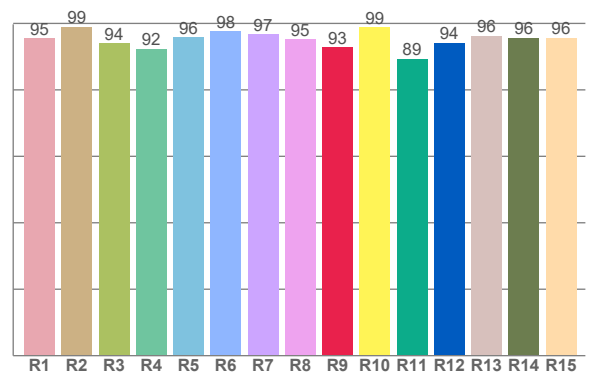
Delivered Lumens

497

Spectra



CRI: 95.8 (R1-R8)



Color parameters

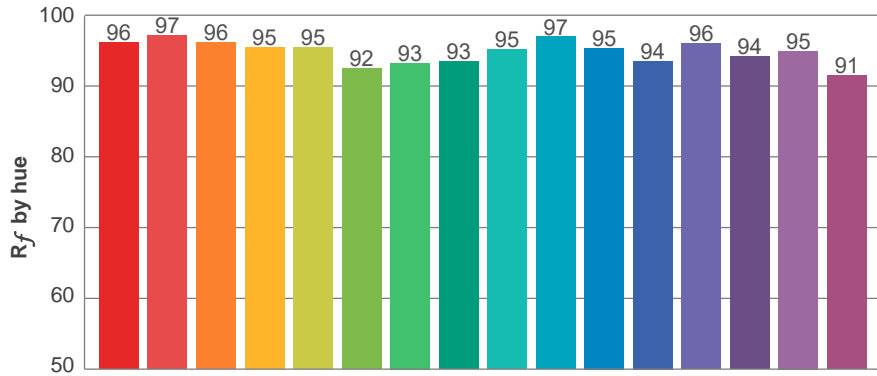
	Color rendering index	Red component	Color fidelity	Color gamut	Color quality scale	Color coordinate cie 1931	Color coordinate cie 1931	Color coordinate	Color coordinate	Color deviation from black body
	CRI	CRI R9	TM30 R _f	TM30 R _g	CQS	x	y	u	v	Δuv
	95.8	92.7	95.0	104.8	94.7	0.437	0.399	0.253	0.346	-0.0019

R_f 95.0
Fidelity index R_f

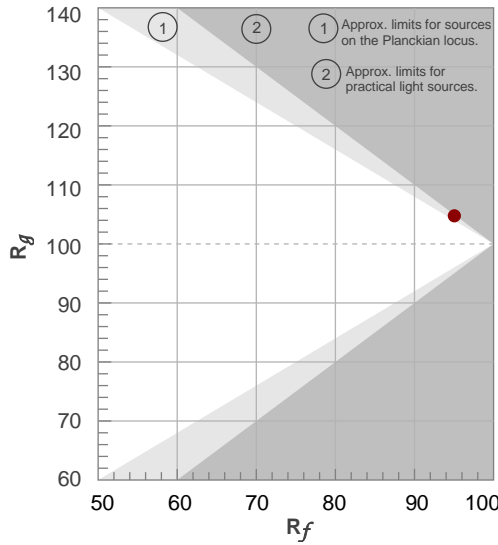
R_g 104.8
Gammut index R_g

TM30: 95.0

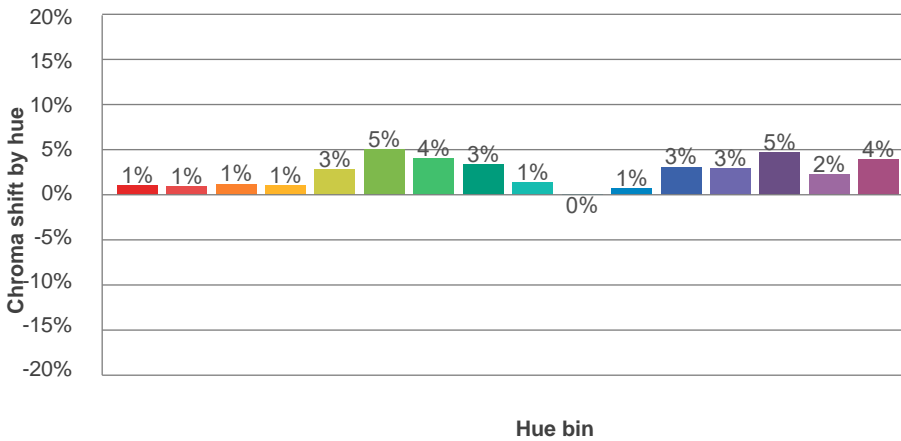
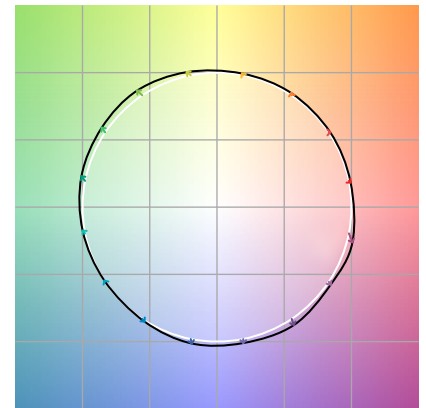
TM-30Color



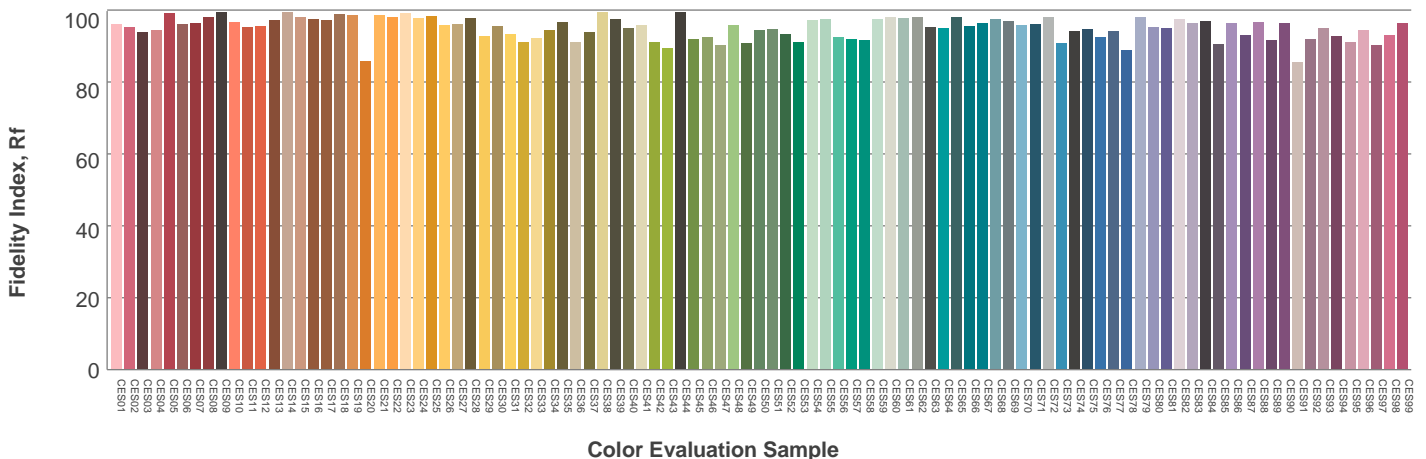
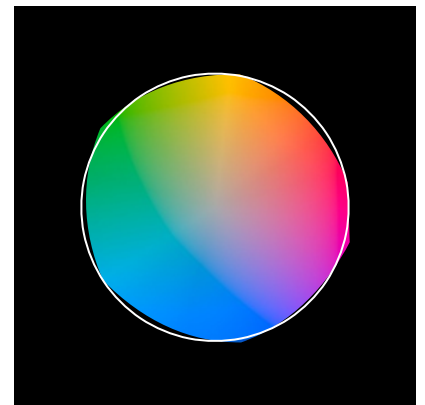
Hue Bin	R_f	Graphic shifts (%)	
		Chroma	Hue
1	96	1%	-1%
2	97	1%	-1%
3	96	1%	1%
4	95	1%	1%
5	95	3%	3%
6	92	5%	1%
7	93	4%	-1%
8	93	3%	-3%
9	95	1%	-2%
10	97	0%	-1%
11	95	1%	2%
12	94	3%	1%
13	96	3%	-1%
14	94	5%	-1%
15	95	2%	-1%
16	91	4%	-6%



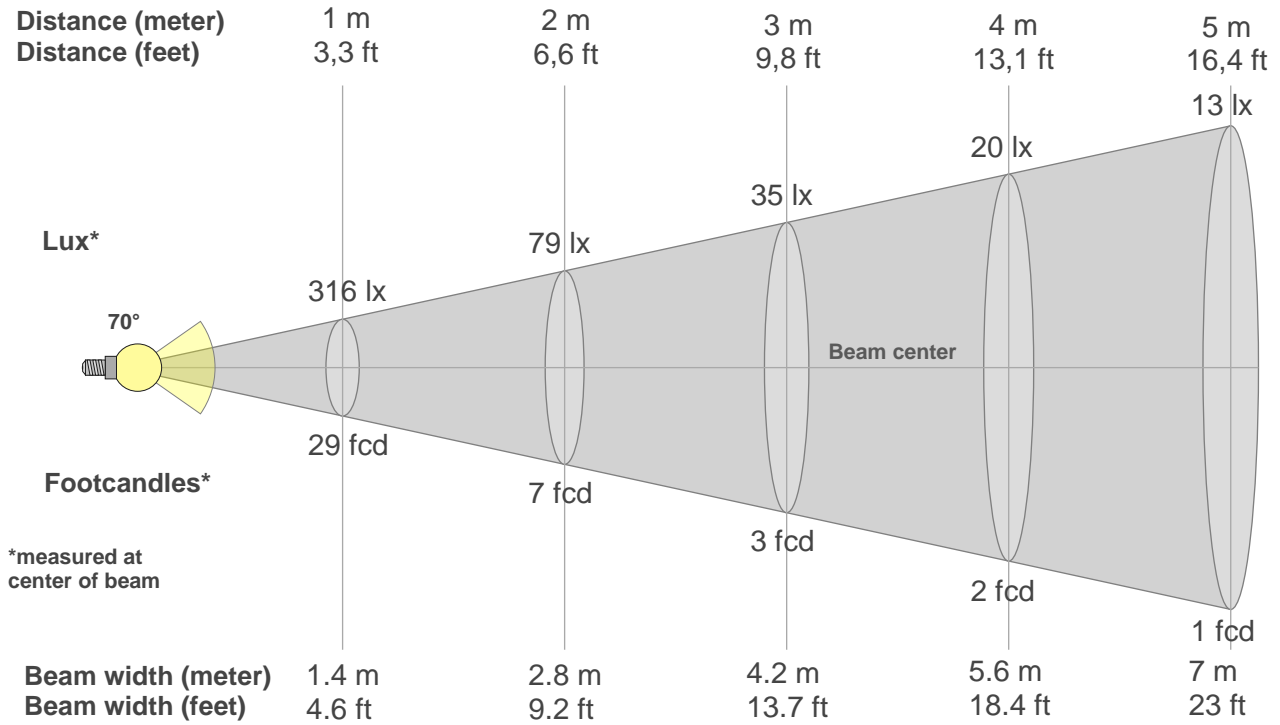
Color vector graphics



Color distortion



Beam details



Beam intensities from 1-20m

1m	2m	3m	4m	5m	6m	7m	8m	9m	10m	11m	12m	13m	14m	15m	16m	17m	18m	19m	20m
3.3ft	6.6ft	9.8ft	13.1ft	16.4ft	19.7ft	23ft	26.2ft	29.5ft	32.8ft	36.1ft	39.4ft	42.7ft	45.9ft	49.2ft	52.5ft	55.8ft	59.1ft	62.3ft	65.6ft
316lx	79lx	35lx	20lx	13lx	9lx	6lx	5lx	4lx	3lx	3lx	2lx	2lx	2lx	1lx	1lx	1lx	1lx	1lx	1lx
29.4fcd	7.3fcd	3.3fcd	1.8fcd	1.2fcd	0.8fcd	0.6fcd	0.5fcd	0.4fcd	0.3fcd	0.2fcd	0.2fcd	0.2fcd	0.1fcd	0.1fcd	0.1fcd	0.1fcd	0.1fcd	0.1fcd	0.1fcd

Intensities in 0° c-plane

0°	5°	10°	15°	20°	25°	30°	35°	40°	45°	50°	55°	60°	65°	70°	75°	80°	85°	90°	95°
316	329	335	336	332	326	318	304	278	242	186	104	53	32	22	15	8	2	1	0
100%	104%	106%	106%	105%	103%	100%	96%	88%	76%	59%	33%	17%	10%	7%	5%	2%	1%	0%	0%

Intensities in 90° c-plane

0°	5°	10°	15°	20°	25°	30°	35°	40°	45°	50°	55°	60°	65°	70°	75°	80°	85°	90°	95°
316	309	298	284	262	226	185	143	108	79	58	43	33	24	17	9	4	2	0	0
100%	98%	94%	90%	83%	72%	58%	45%	34%	25%	18%	14%	10%	8%	5%	3%	1%	1%	0%	0%

Intensities in 180° c-plane

0°	5°	10°	15°	20°	25°	30°	35°	40°	45°	50°	55°	60°	65°	70°	75°	80°	85°	90°	95°
316	299	275	239	190	138	98	73	59	49	41	32	25	16	10	6	4	3	0	0
100%	95%	87%	76%	60%	43%	31%	23%	19%	15%	13%	10%	8%	5%	3%	2%	1%	1%	0%	0%

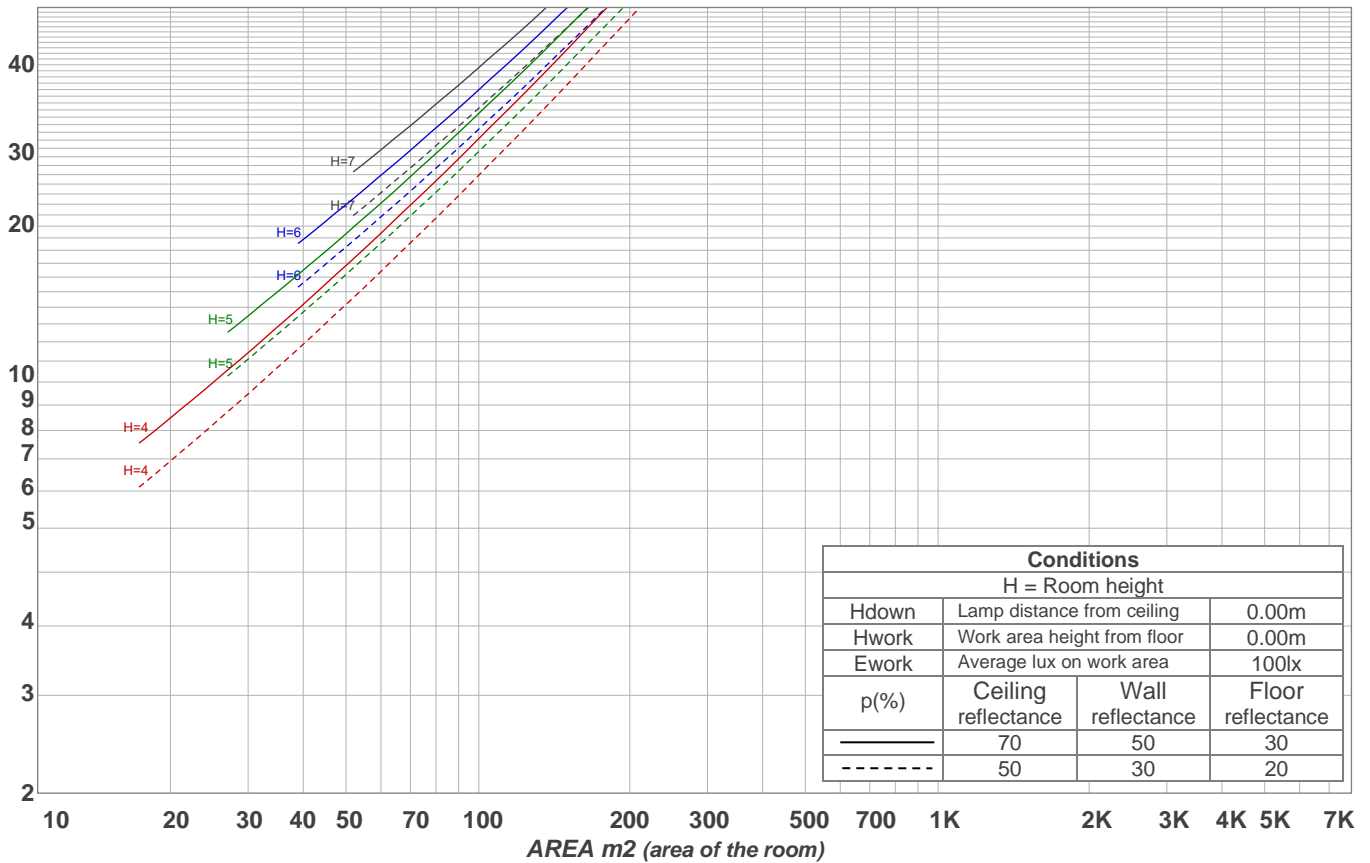
Intensities in 270° c-plane

0°	5°	10°	15°	20°	25°	30°	35°	40°	45°	50°	55°	60°	65°	70°	75°	80°	85°	90°	95°
316	312	304	291	269	231	186	144	108	81	60	45	34	25	17	9	4	2	1	0
100%	99%	96%	92%	85%	73%	59%	45%	34%	26%	19%	14%	11%	8%	5%	3%	1%	0%	0%	0%

Beam angle 50%	Field angle 10%	Cutoff angle 2,5%	Intensity ratio in 120° cone	Intensity ratio in 90° cone
70°	122.2°	151.8°	92.0%	73.7%

LAMPS (number of lamps)
50

Light planning Luminaire budgetary diagram



Luminaire budgetary diagram AREA m2 (area of the room) Coefficients of Utilization

Ceiling reflectance	80				70				50			30			10			0			
Wall reflectance	70	50	30	10	70	50	30	10	50	30	10	50	30	10	50	30	10	50	30	10	0
Floor reflectance	20	20	20	20	20	20	20	20	20	20	20	20	20	20	20	20	20	20	20	20	0
RCR	(RCR: Room Cavity Ratio)																				
	Room Values are expressed as percentage of Lumens delivered to the task surface																				
0	119	119	119	119	116	116	116	116	111	111	111	106	106	106	102	102	102	100	100	100	100
1	111	108	104	101	109	105	102	100	101	99	97	97	96	94	94	92	91	89	89	89	89
2	103	97	92	87	101	95	90	86	92	88	84	89	85	82	86	83	80	79	79	79	79
3	96	88	81	76	94	86	80	75	83	78	74	81	76	73	78	75	71	69	69	69	69
4	89	79	72	67	87	78	71	66	76	70	65	74	69	65	72	67	64	62	62	62	62
5	83	72	65	59	81	71	64	59	69	63	58	68	62	58	66	61	57	55	55	55	55
6	78	66	59	53	76	66	58	53	64	57	53	62	57	52	61	56	52	50	50	50	50
7	73	61	54	48	71	60	53	48	59	52	48	58	52	47	56	51	47	45	45	45	45
8	68	56	49	44	67	56	49	44	55	48	44	53	48	43	52	47	43	41	41	41	41
9	64	52	45	40	63	52	45	40	51	44	40	50	44	40	49	44	40	38	38	38	38
10	61	49	42	37	59	48	42	37	47	41	37	47	41	37	46	40	37	35	35	35	35

Zonal Lumen Summary

0°-10°	10°-20°	20°-30°	30°-40°	40°-50°	50°-60°	60°-70°	70°-80°	80°-90°
29.6 lm	80.7 lm	107 lm	104 lm	84.0 lm	52.5 lm	26.3 lm	10.8 lm	2.51 lm
90°-100°	100°-110°	110°-120°	120°-130°	130°-140°	140°-150°	150°-160°	160°-170°	170°-180°
0.000 lm	0.000 lm	0.000 lm	0.000 lm	0.000 lm	0.000 lm	0.000 lm	0.000 lm	0.000 lm