



Project Name:

Specifier:

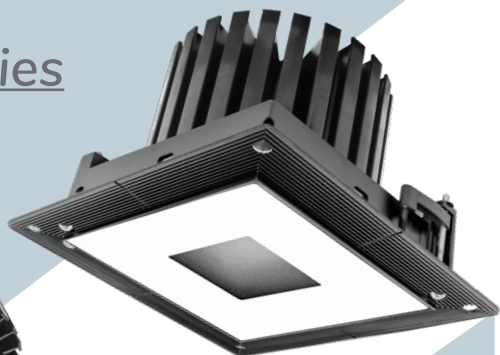
Distributor:

Quantity:

Type:

Signature:

## GR-F Series



# LED Lighting Solutions

**GRF** Series in low to medium ceiling heights typically found in residential, commercial or retail applications. GRF series fixtures feature a flat trim surface that blends seamlessly with the ceiling construction. The Graffiti™ fixtures provide cost effective LED lighting solutions. As the creative spirit of its name implies, Graffiti™ systems provide all the quality SLI has grown famous for over the last 25 years, but at reduced lead times, affordable price points and innovative technologies that will liberate your creative flair.

**THERMAL MANAGEMENT:** Proprietary high performance aluminum black heatsink for maximum LED life

## ADJUSTABLE/FIXED

### SPECIFICATIONS

**MOUNTING** - Recessed in architectural ceiling. Butterfly brackets and Hanger bars included with housing and mounting pans.

- **RM**- Open fixture for retrofit for remodel in existing ceilings
- **IC**-Housing for new construction where insulation comes in contact with fixture
- **NIC**-Housing for new construction where IC not required
- **NP**- For New construction
- **DP**- Pan for dropped ceilings
- **BP**- Pan for metal studs
- **CP**- Chicago Plenum

**HOUSING** - C1/C2 Fixed housing is smaller size than Lutron/EldoLED Fixed housing. [See Details on Pg 3](#)

**TRIM\*** - One piece die cast aluminum, flanged or flangeless trim with a 1" regressed bevel and overlap for flange. Available for wet locations. Accommodates up to 1" ceiling thickness as standard.

*Extension Clips available upon request (TEX2)*

- **ZT/ZST**- for use in plaster/GWB ceilings
- **FT/FST**- for use in architectural ceilings

### ELECTRICAL

- **Standard 0-10v (C1)** Dimming down to 1%
  - **TRIAC/ELV (C2)** Dimming down to 1%
  - **0-10v (E1)** Logarithmic Dimming down to 0.1%
  - **Dali-2 (E2)** Dimming down to 0.1%
  - **0-10v (E3)** Linear Dimming down to 0.1%
  - **Lutron Hi-lume EcoSystem 1% (LTB)** Hi-lume 1% with Fade-to-Black (former H-Series) digital EcoSystem Driver
  - **TruPhase™ (TR2)** 2 wire Phase Dimming down to 0.1% \*available up to 20W (compatible with forward and reverse phase dimmers)
  - **EM Pack** Dimming driver with emergency battery backup
- All drivers are field replaceable\*

Specifier/Installer is responsible for testing & validating compatibility of any control equipment used. Additional conductors may be required depending on dimming system.

### LED

- **CZ- Citizen** 2400K / 2700K / 3000K / 3500K / 4000K, 90+CRI, 50+R9
- **AD- Ambient Dim™** 3000 to 1900K / 3000 to 2200K / 2700 to 2200K, 97 CRI

**LENS/OPTICS** - Interchangeable reflector provides multiple beam patterns. Field-changeable optics [View Lens Guide](#)



- **Spot (15°)** • **Narrow (24°)** • **Flood (38°)** • **Wide Flood (60°)**

Optional lenses available for aperture include Solite and Veiling Acrylic. Accepts two optical accessories and an optional trim mounted lens.

**FINISH** - Black powder paint housing.

Aperture trim available in white, black and silver as standard. White recommended for field paint matching.

**WARRANTY** - 5 year limited on LED and driver. [View Terms and Conditions](#)

**LABELS** -  US tested to UL standards 1598, Dry/Damp and Wet listings. IC/Airtight,  Supports CA Title 24 part 6 compliance meeting JA8 Requirements in many combinations. Chicago Plenum Available.

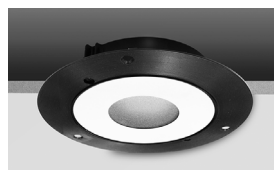
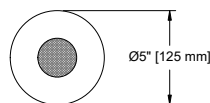
ALL ELECTRICAL COMPONENTS AND REPLACEMENT PART ARE ACCESSIBLE FOR ROOM SIDE MAINTENANCE.



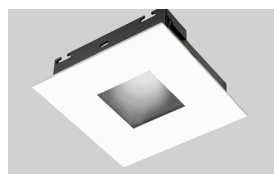
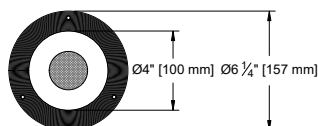
## INFORMATION- TRIM



ROUND/ FLANGED



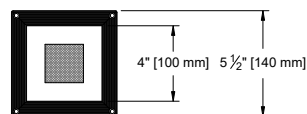
ROUND / FLANGELESS



SQUARE / FLANGED



SQUARE / FLANGELESS



## Photometrics

[View additional photometric data](#)

\*\*LED Technology rapidly changes.  
Please consult factory for latest specs and photometry.

## Care & Maintenance

\*\*LED's are sensitive electronic components and should be protected from dust and debris during the installation and maintenance process.

[Read Fixture Care & Maintenance Guidelines](#)

## Lens Guide

[View Lens Guide](#)

## ORDER INFO

## CODE

### Graffiti™ Housing

GRF

#### Housing

RM = Retrofit  
IC = IC/Airtight  
NIC = Non IC  
NP = New Pan  
DP = Dropped Pan  
BP = Bracket Pan  
CP = Chicago Plenum

#### Source/System Watts/Delivered lm/LPW(Lumens/watt)

Values Based on Round, Fixed, with Flood optic

**CZ14** = Citizen 14W / 1285lm / 91LPW  
**CZ20** = Citizen 21W / 1740lm / 83LPW  
**AD14** = Ambient Dim 14.6W / 812lm / 55LPW  
**AD20** = Ambient Dim 21.3W / 1396lm / 66LPW (AD 3019 only)

#### Type

F = Fixed  
A = Adjustable

#### CCT

##### Fixed White

24 = 2400K  
27 = 2700K  
30 = 3000K  
35 = 3500K  
40 = 4000K

##### Ambient Dim

3019 = 3000K to 1900K  
3022 = 3000K to 2200K (AD14 only)  
2722 = 2700 to 2200K (AD14 only)

#### Beam

SP = Spot  
NF = Narrow flood

#### Driver (Lutron & EldoLED require inverter)

C1 = 0-10V dimming, 1%, 120-277v  
C2 = TRIAC/ELV 2-wire, 1% 120V only (Leading/Trailing Edge)  
E1 = 0-10V Logarithmic Dim, 0.1%, 120-277v  
E2 = DALI-2, 0.1%, 120-277v  
E3 = 0-10V Linear Dim, 0.1%, 120-277v  
LTB = Hi-lume 1% with Fade-to-Black (former H-Series) digital EcoSystem Driver, 120-277v (LDE1)  
TR2 = 2 wire Phase Dimming down to 0.1% - Linear/Logarithmic  
EM = Emergency Pack  
C1-EM = C1 Emergency Pack (0-10V dimming, 1%, 120-277v)  
C2-EM = C2 Emergency Pack (TRIAC/ELV 2-wire, 1% 120V only (Leading/Trailing Edge))

### Graffiti™ Trim

GRTF

#### Shape

RD = Round  
SQ = Square

#### Trim \*Lens Required

FT = Flanged      FST\* = Flanged Shower      TEX2 = Extension Clips  
ZT = Flangeless      ZST\* = Flangeless Shower

#### Finish

WHT

WHT = White

#### Lens

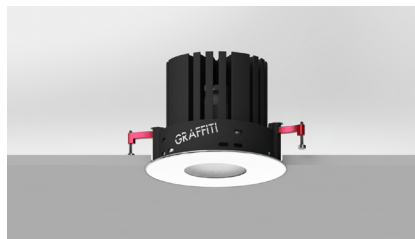
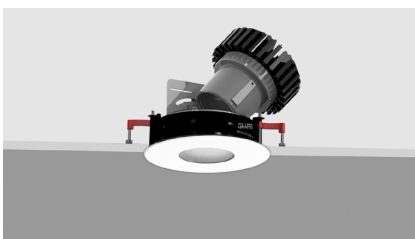
91A = Solite  
79A = Frosted  
None

# INFORMATION- HOUSING

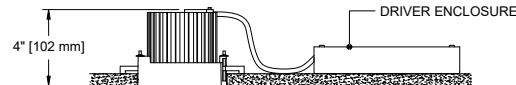
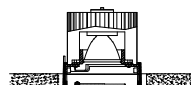
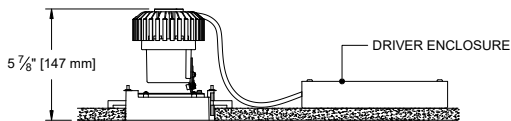
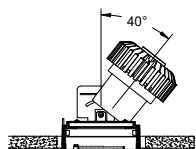
RETROFIT

For easy installation in existing ceilings.

ADJUSTABLE



FIXED

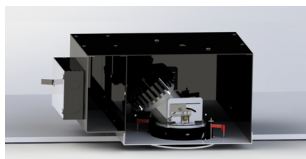


IC/NIC/CP

For projects requiring housings or IC rated fixtures.

1287 Hanger Bars comes standard with fixed and adjustable housing (see below for hanger bar dimensions).

ADJUSTABLE All Drivers



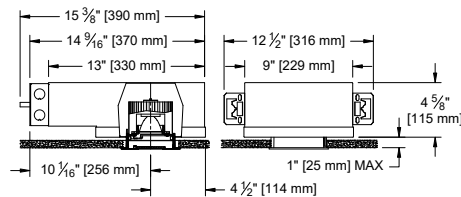
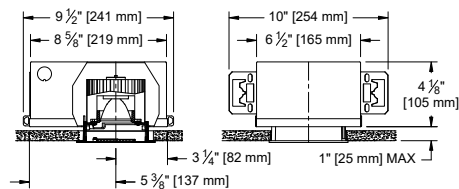
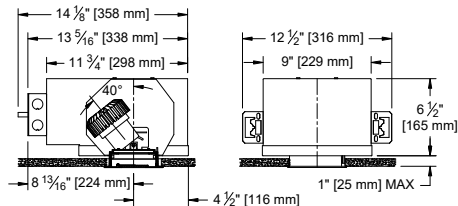
FIXED C1/C2 Drivers, EldoLED



FIXED LUTRON



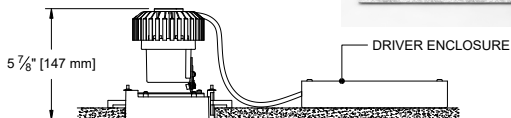
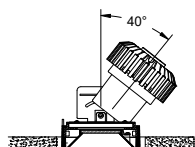
FIXED



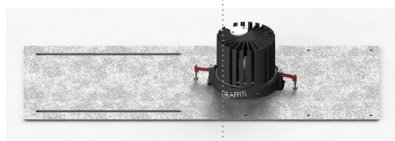
PAN

For new construction applications not requiring a housing.

ADJUSTABLE

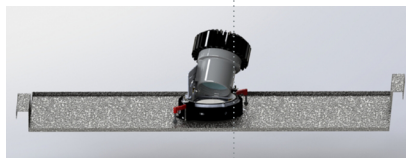


OPTION - New Pan

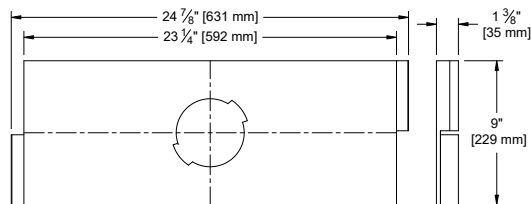
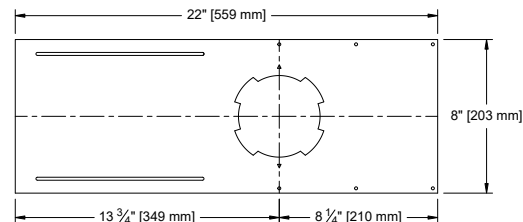
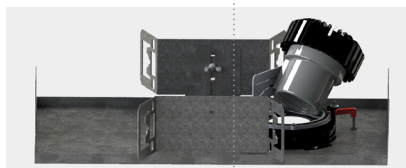


OPTION - Dropped Pan

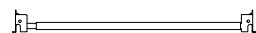
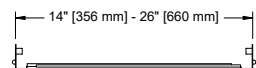
for use in Armstrong® T-Bar ceilings



OPTION - Bracket Pan



1287 Hanger Bar comes standard with Bracket Pan & IC/NIC  
Maximum Extension: 26"



FIXED

