



**Project Name:**

**Specifier:**

**Distributor:**

**Quantity:**

**Type:**

**Signature:**

## GR-W Series

The  
**Innovative**  
Line  
of



# LED Lighting Solutions

**GRW** Series wallwashing in low to medium ceiling heights typically found in residential, commercial or retail applications. The wall wash fixture creates consistent and even illumination from ceiling down using our proprietary Supertex™ lens. Fixture provided with LED positioned for optimal performance. The Graffiti™ fixtures provide cost effective LED lighting solutions. As the creative spirit of its name implies, Graffiti™ systems provide all the quality SLI has grown famous for over the last 25 years, but at reduced lead times, affordable price points and innovative technologies that will liberate your creative flair.

**THERMAL MANAGEMENT:** Proprietary high performance aluminum black heatsink for maximum LED life

## WALL WASHER

### SPECIFICATIONS

**MOUNTING** - Recessed in architectural ceiling. Butterfly brackets and Hanger bars included with housing and mounting pans.

- **RM**- Open fixture for retrofit for remodel in existing ceilings
- **IC**- Housing for new construction where insulation comes in contact with fixture
- **NIC**- Housing for new construction where IC not required
- **NP**- For New construction
- **DP**- Pan for dropped ceilings
- **BP**- Pan for metal studs
- **CP**- Chicago Plenum

**HOUSING** - C1/C2 Fixed housing is smaller size than Lutron/EldoLED Fixed housing (see page 3 for details)\*.

**TRIM** - Die cast aluminum, flanged or flangeless trim with a regress bevel and overlap for flange. Available for wet locations.

\*Accommodates up to 1" ceiling thickness as standard.

\*(Extension Clips available upon request)

- **ZT**- for use in plaster/GWB ceilings
- **FT/FST**- for use in architectural ceilings

### ELECTRICAL

- **Standard 0-10v (C1)** Dimming down to 1%
  - **TRIAC/ELV (C2)** Dimming down to 1%
  - **EldoLED 0-10v (E1)** Logarithmic Dimming down to 0.1%
  - **EldoLED Dali (E2)** Dimming down to 0.1%
  - **EldoLED 0-10v (E3) Linear Dimming down to 0.1%**
  - **Lutron Hi-lume EcoSystem 1% (LTB)** Hi-lume 1% with Fade-to-Black (former H-Series) digital EcoSystem Driver
  - **Lutron Hi-lume Premier 0.1% (LTP)** Hi-lume Premier 0.1% with Fade-to-Black digital EcoSystem
  - **EM Pack** Dimming driver with emergency battery backup
- All drivers are field replaceable\*

Specifier/Installer is responsible for testing & validating compatibility of any control equipment used. Additional conductors may be required depending on dimming system.

### LED

- **CZ- Citizen** 2400K / 2700K / 3000 / 3500K / 4000K, 90+CRI, 50+R9
- **AD- Ambient Dim™** 3000 to 1900K / 3000 to 2200K / 2700 to 2200K, 97 CRI
- **XT- Xicato** Available on request


**LENS/OPTICS** - Supertex borosilicate spread lens, hinged for relamping.

See Lens Guide on Pg 2

**FINISH** - Black powder paint housing. Aperture trim available in white, black and silver as standard. White recommended for field paint matching.

**WARRANTY** - 5 year limited on LED and driver. See website for details.

**LABELS** -  US tested to UL standards 1598, Dry/Damp and Wet

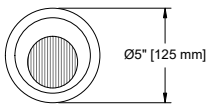
listings. IC/Airtight,  Supports CA Title 24 part 6 compliance meeting JA8 Requirements in many combinations. Chicago Plenum Available.



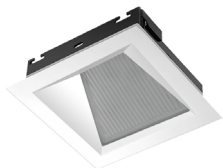
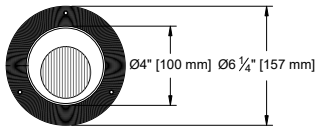
INFORMATION- TRIM



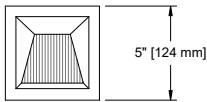
ROUND/ FLANGED



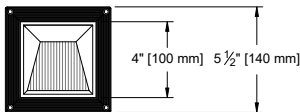
ROUND / FLANGELESS



SQUARE / FLANGED



SQUARE / FLANGELESS



PHOTOMETRICS

[\\*Click here to visit website for further photometric data](#)

*\*\*LED Technology rapidly changes. Please consult factory for latest specs and photometry.*

Care & Maintenance

*\*\*LED's are sensitive electronic components and should be protected from dust and debris during the installation and maintenance process.*

[\\*\\*Fixture Care & Maintenance Guidelines](#)

Lens Guide

[\\*Click here to view Lens Guide](#)

ORDER INFO

CODE

Graffiti™ Housing

GRW

Housing

RM = Retrofit  
IC = IC/Airtight  
NIC = Non IC  
NP = New Pan  
DP = Dropped Pan  
BP = Bracket Pan  
CP = Chicago Plenum

Source/System Watts/Delivered lm

**CZ14** = Citizen 14W / 813lm / 58LPW  
**CZ20** = Citizen 21W / 1102lm / 53 LPW  
**CZY** = Citizen 21W / 1318lm / 63LPW  
**AD14** = Ambient Dim 15W / 526lm / 35 LPW  
**AD20** = Ambient Dim 21W / 826lm (AD 3019 only) / 36LPW  
Based on Round. AD based on 3019 at 3k.  
(See Photometrics tab on website for other values.)

Type

**WW** = Wall Wash

CCT

**Fixed White**  
**24** = 2400K  
**27** = 2700K  
**30** = 3000K  
**35** = 3500K  
**40** = 4000K

**Ambient Dim**  
**3019** = 3000K to 1900K  
**3022** = 3000K to 2200K (AD14 only)  
**2722** = 2700 to 2200K (AD14 only)

Driver \*\*Lutron & EldoLED require Inverter

**C1** = 0-10V dimming, 1%, 120-277v  
**C2** = TRIAC/ELV 2-wire, 1% 120V only (Leading/Trailing Edge)  
**E1** = EldoLED 0-10V Logarithmic Dim, 0.1%, 120-277v  
**E2 \*\*** = EldoLED DALI, 0.1%, 120-277v  
**E3** = EldoLED 0-10V Linear Dim, 0.1%, 120-277v  
**LTB \*\*** = Hi-lume 1% with Fade-to-Black (former H-Series) digital EcoSystem Driver, 120-277v (LDE1)  
**LTP \*\*** = Hi-lume Premier 0.1% with Fade-to-Black digital EcoSystem, 120-277v (PEQ0)  
**EM** = Emergency Pack  
**C1-EM** = C1 Emergency Pack (0-10V dimming, 1%, 120-277v)  
**C2-EM** = C2 Emergency Pack (TRIAC/ELV 2-wire, 1% 120V only (Leading/Trailing Edge)

Graffiti™ Trim

GRTW

Shape

RD = Round  
SQ = Square

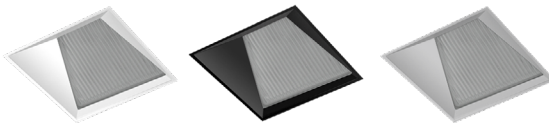
Trim

\*Lens Required

**FT** = Flanged  
**ZT** = Flangeless  
**FST\*** = Flanged Shower  
**ZST\*** = Flangeless Shower  
**TEX2** = Extension Clips

Finish

**WHT** = White  
**BLK** = Black  
**SLV** = Silver



Lens

82A

82A = Frosted Supertex

INFORMATION- HOUSING

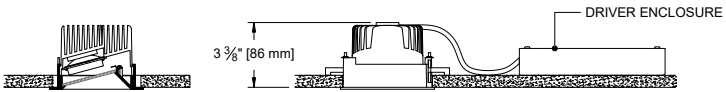
RETROFIT

For easy installation in existing ceilings.

SQUARE / FLANGE



ROUND / PLASTER FLANGE

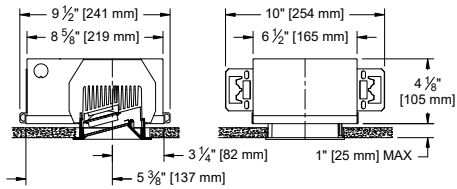


IC/NIC/CCP

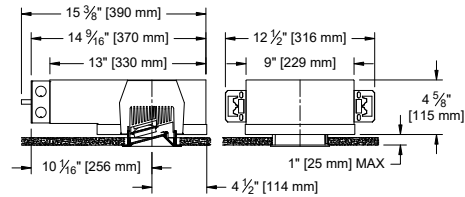
For projects requiring housings or IC rated fixtures.

1287 Hanger Bars comes standard with fixed and adjustable housing (see below for hanger bar dimensions).

FIXED C1/C2 Drivers



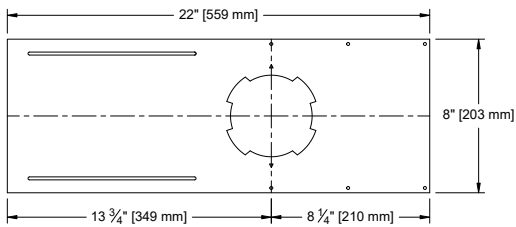
FIXED LUTRON / ELDO Drivers



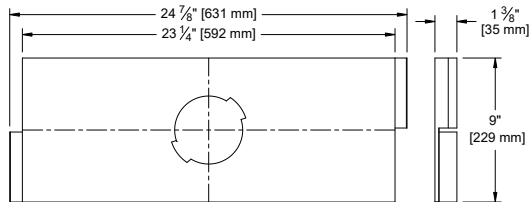
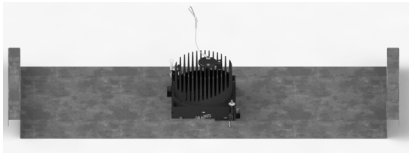
PAN

For new construction applications not requiring a housing.

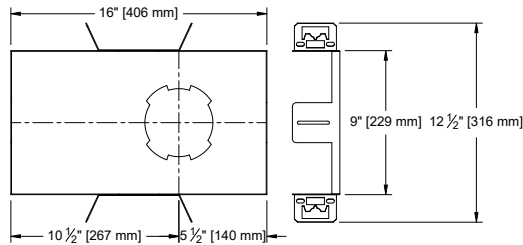
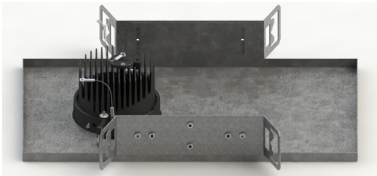
OPTION - New Pan



OPTION - Dropped Pan  
for use in Armstrong®  
T-Bar ceilings



OPTION - Bracket Pan



1287 Hanger Bar comes standard with Bracket Pan & IC/NIC

Maximum Extension: 26"

