



Project Name:

Specifier:

Distributor:

Quantity:

Type:

Signature:

GR Series

The
Innovative
Line
of



LED Lighting Solutions

GR

Series in low to medium ceiling heights typically found in residential, commercial or retail applications. GR Series fixtures are highly adjustable via hot aiming mechanism and hallmarked by superior light quality. The Graffiti™ fixtures provide cost effective LED lighting solutions. As the creative spirit of its name implies, Graffiti™ systems provide all the quality SLI has grown famous for over the last 25 years, but at reduced lead times, affordable price points and innovative technologies that will liberate your creative flair.

THERMAL MANAGEMENT: Proprietary high performance aluminum black heatsink for maximum LED life

ADJUSTABLE/FIXED

SPECIFICATIONS

MOUNTING - Recessed in architectural ceiling. Butterfly brackets and Hanger bars included with housing and mounting pans.

- RM- Open fixture for retrofit for remodel in existing ceilings
- IC-Housing for new construction where insulation comes in contact with fixture
- NIC-Housing for new construction where IC not required
- NP- For New construction
- DP- Pan for dropped ceilings
- BP- Pan for metal studs
- CP- Chicago Plenum

HOUSING - C1/C2 Fixed housing is smaller size than Lutron/EldoLED Fixed housing (see page 3 for details)*.

TRIM - One piece die cast aluminum, flanged or flangeless trim with a 1" regress bevel and overlap for flange. Available for wet locations. Accommodates up to 1" ceiling thickness as standard.

- ZT/ZST- for use in plaster/GWB ceilings
- FT/FST- for use in architectural ceilings

ELECTRICAL

- Standard 0-10v (C1) Dimming down to 1%
 - TRIAC/ELV (C2) Dimming down to 1%
 - EldoLED 0-10v (E1) Logarithmic Dimming down to 0.1%
 - EldoLED Dali (E2) Dimming down to 0.1%
 - EldoLED 0-10v (E3) Linear Dimming down to 0.1%
 - Lutron Hi-lume EcoSystem 1% (LTB) Hi-lume 1% with Fade-to-Black (former H-Series) digital EcoSystem Driver
 - Lutron Hi-lume Premier 0.1% (LTP) Hi-lume Premier 0.1% with Fade-to-Black digital EcoSystem
 - EM Pack Dimming driver with emergency battery backup
- All drivers are field replaceable*

Specifier/Installer is responsible for testing & validating compatibility of any control equipment used. Additional conductors may be required depending on dimming system.

LED

- CZ- Citizen 2400K / 2700K / 3000K / 3500K / 4000K, 90+CRI, 50+R9
- AD- Ambient Dim™ 3000 to 1900K / 3000 to 2200K / 2700 to 2200K, 97 CRI
- TW-Tunable White (Ranges include - 1800K-4000K / 2700K-6500K)

LENS/OPTICS - Interchangeable reflector provides multiple beam patterns. Field-changeable optics

- Spot (15°) • Narrow (24°) • Flood (38°) • Wide Flood (60°)



Optional lenses available for aperture include Solite and Veiling Acrylic. Accepts two optical accessories and an optional trim mounted lens.

See Lens Guide on Pg 2

FINISH - Black powder paint housing.

Aperture trim available in white, black and silver as standard. White recommended for field paint matching.

WARRANTY - 5 year limited on LED and driver. See website for details.

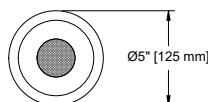
LABELS -  US tested to UL standards 1598, Dry/Damp and Wet listings. IC/Airtight,  Supports CA Title 24 part 6 compliance meeting JA8 Requirements in many combinations. Chicago Plenum Available.



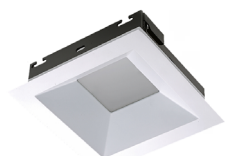
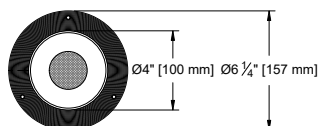
INFORMATION- TRIM



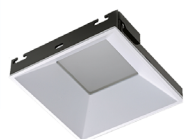
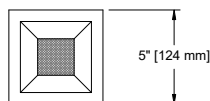
ROUND/ FLANGED



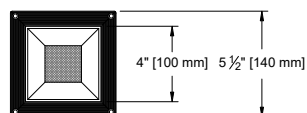
ROUND / FLANGELESS



SQUARE / FLANGED



SQUARE / FLANGELESS



PHOTOMETRICS

[*Click here to Visit our website for further photometric data.](#)

***LED Technology rapidly changes.
Please consult factory for latest specs and photometry.*

Care & Maintenance

***LED's are sensitive electronic components and should be protected from dust and debris during the installation and maintenance process.*

[**Fixture Care & Maintenance Guidelines](#)

Lens Guide

[*Click here to view Lens Guide](#)

ORDER INFO

CODE

Graffiti™ Housing

GR

Housing

RM = Retrofit
IC = IC/Airtight
NIC = Non IC
NP = New Pan
DP = Dropped Pan
BP = Bracket Pan
CP = Chicago Plenum

Source/System Watts/Delivered lm/LPW(Lumens/watt)

CZ14 = Citizen 14W / 1285lm / 91LPW
CZ20 = Citizen 21W / 1740lm / 83LPW
AD14 = Ambient Dim 14.6W / 812lm / 55LPW
AD20 = Ambient Dim 21.3W / 1396lm / 66LPW (AD 3019 only)
XT = Xicato - Contact Factory

Values Based on Round 40° fixed

Type

F = Fixed
A = Adjustable

CCT

Fixed White

24 = 2400K
27 = 2700K
30 = 3000K
35 = 3500K
40 = 4000K

Ambient Dim

3019 = 3000K to 1900K
3022 = 3000K to 2200K (AD14 only)
2722 = 2700 to 2200K (AD14 only)

Beam

SP = Spot
NF = Narrow flood
FL = Flood
WF = Wide flood

Driver ** Lutron & EldoLED require inverter

C1 = 0-10V dimming, 1%, 120-277v
C2 = TRIAC/ELV 2-wire, 1% 120V only (Leading/Trailing Edge)
E1 = EldoLED 0-10V Logarithmic Dim, 0.1%, 120-277v
E2** = EldoLED DALI, 0.1%, 120-277v
E3 = EldoLED 0-10V Linear Dim, 0.1%, 120-277v
LTB** = Hi-lume 1% with Fade-to-Black (former H-Series) digital EcoSystem Driver, 120-277v (LDE1)
LTP** = Hi-lume Premier 0.1% with Fade-to-Black digital EcoSystem, 120-277v (PEQ0)
EM = Emergency Pack
C1-EM = C1 Emergency Pack (0-10V dimming, 1%, 120-277v)
C2-EM = C2 Emergency Pack (TRIAC/ELV 2-wire, 1% 120V only (Leading/Trailing Edge))

Graffiti™ Trim

GRT

Shape

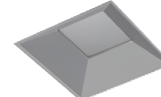
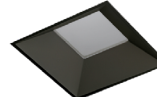
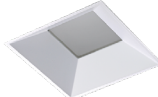
RD = Round
SQ = Square

Trim *Lens Required

FT = Flanged
ZT = Flangeless
FST* = Flanged Shower
ZST* = Flangeless Shower
TEX2 = Extension Clips

Finish

WHT = White
BLK = Black
SLV = Silver



Lens

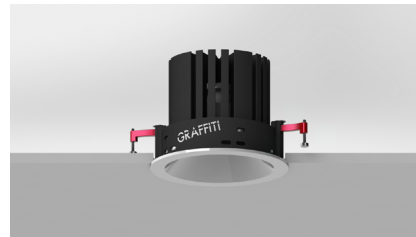
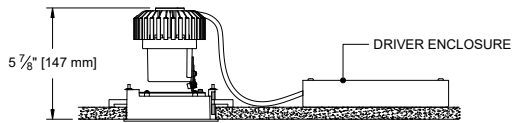
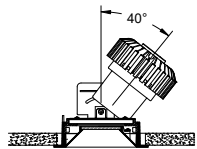
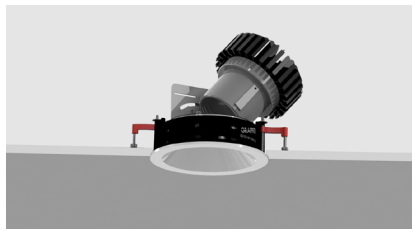
91A = Solite
79A = Frosted
None

INFORMATION- HOUSING

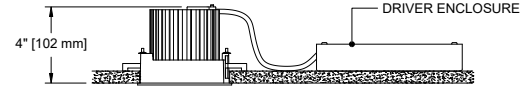
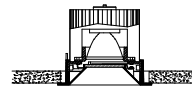
RETROFIT

For easy installation in existing ceilings.

ADJUSTABLE



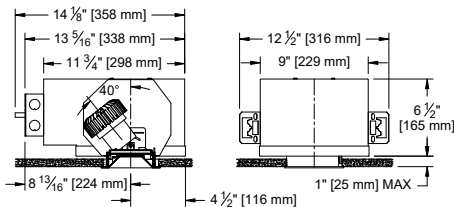
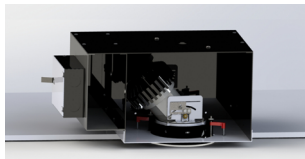
FIXED



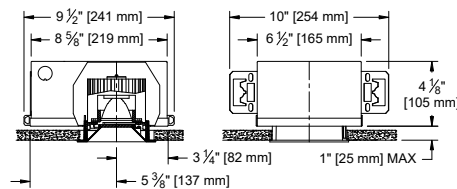
For projects requiring housings or IC rated fixtures.

1287 Hanger Bars comes standard with fixed and adjustable housing (see below for hanger bar dimensions).

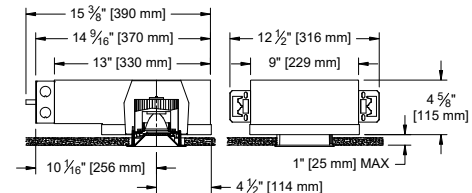
ADJUSTABLE All Drivers



FIXED C1/C2 Drivers



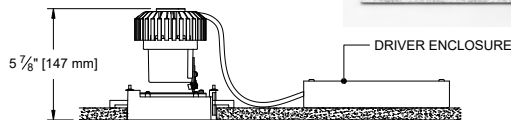
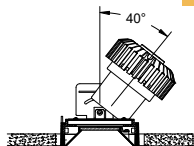
FIXED LUTRON / ELDO Drivers



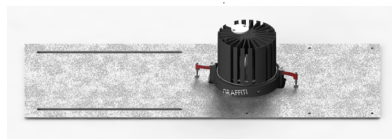
PAN

For new construction applications not requiring a housing.

ADJUSTABLE

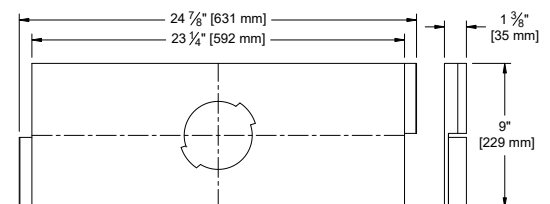
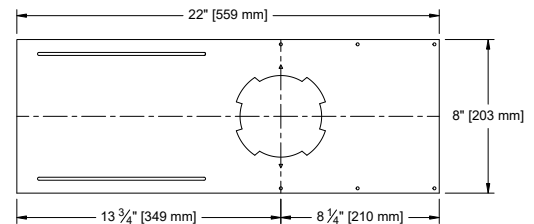
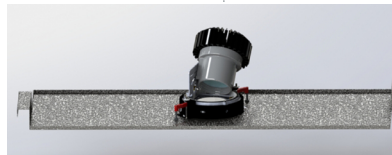


OPTION - New Pan

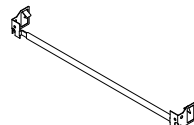
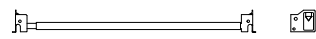
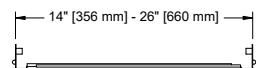


OPTION - Dropped Pan

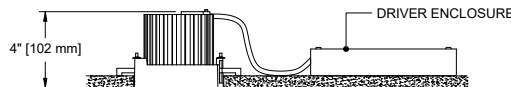
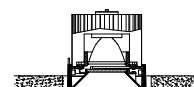
for use in Armstrong® T-Bar ceilings



1287 Hanger Bar comes standard with Bracket Pan & IC/NIC
Maximum Extension: 26"



FIXED



OPTION - Bracket Pan

