



Project Name:

Specifier:

Distributor:

Quantity:

Signature:

Type:

ADJUSTABLE/FIXED

SPECIFICATIONS

MOUNTING - Recessed in architectural ceiling. Butterfly brackets and Hanger bars included with housing and mounting pans.

- **RM**- Open fixture for retrofit for remodel in existing ceilings
- **IC**-Housing for new construction where insulation comes in contact with fixture
- **NIC**-Housing for new construction where IC not required
- **NP**- For New construction
- **DP**- Pan for dropped ceilings
- **BP**- Pan for metal studs
- **CP**- Chicago Plenum

HOUSING - C1/C2 Fixed housing is smaller size than Lutron/EldoLED Fixed housing. [See Details on Pg.3](#)

TRIM - One piece die cast aluminum, flanged or flangeless trim with a 1" regress bevel and overlap for flange . Available for wet locations. Accommodates up to 1" ceiling thickness as standard.

- **ZT/ZST**- for use in plaster/GWB ceilings
- **FT/FST**- for use in architectural ceilings

Extension Clips available upon request (TEX2)

ELECTRICAL

- **Standard 0-10v (C1)** Dimming down to 1%
- **TRIAC/ELV (C2)** Dimming down to 1%
- **0-10v (E1)** Logarithmic Dimming down to 0.1%
- **Dali-2 (E2)** Dimming down to 0.1%
- **0-10v (E3)** Linear Dimming down to 0.1%
- **Lutron Hi-lume EcoSystem 1% (LTB)** Hi-lume 1% with Fade-to-Black (former H-Series) digital EcoSystem Driver
- **TruPhase™ (TR2)** 2 wire Phase Dimming down to 0.1% *available up to 20W (compatibile with forward and reverse phase dimmers)
- **EM Pack** Dimming driver with emergency battery backup
All drivers are field replaceable*

Specifier/Installer is responsible for testing & validating compatibility of any control equipment used. Additional conductors may be required depending on dimming system.

LED

- **CZ- Citizen** 2400K / 2700K / 3000K / 3500K / 4000K, 90+CRI, 50+R9
- **AD- Ambient Dim™** 3000 to 1900K / 3000 to 2200K / 2700 to 2200K, 97 CRI

LENS/OPTICS - Interchangeable reflector provides multiple beam patterns.

Field-changeable optics. [View Lens Guide](#)



- **Spot (15°)** • **Narrow (24°)** • **Flood (38°)** • **Wide Flood (60°)**

Optional lenses available for aperture include Solite and Veiling Acrylic. Accepts two optical accessories and an optional trim mounted lens.

FINISH - Black powder paint housing.

Aperture trim available in white, black and silver as standard. White recommended for field paint matching.

WARRANTY - 5 year limited on LED and driver. [View Terms and Conditions](#)

LABELS -  US tested to UL standards 1598, Dry/Damp and Wet listings. IC/Airtight,  Supports CA Title 24 part 6 compliance meeting JA8 Requirements in many combinations. Chicago Plenum Available.

ALL ELECTRICAL COMPONENTS AND REPLACEMENT PART ARE ACCESSABLE FOR ROOM SIDE MAINTENANCE.

GR Series



LED

Lighting

Solutions

GR Series in low to medium ceiling heights typically found in residential, commercial or retail applications. GR Series fixtures are highly adjustable via hot aiming mechanism and hallmarked by superior light quality. The Graffiti™ fixtures provide cost effective LED lighting solutions. As the creative spirit of its name implies, Graffiti™ systems provide all the quality SLI has grown famous for over the last 25 years, but at reduced lead times, affordable price points and innovative technologies that will liberate your creative flair.

THERMAL MANAGEMENT: Proprietary high performance aluminum black heatsink for maximum LED life



ORDER INFO

CODE

Graffiti™ Housing

GR

Housing

- RM = Retrofit
- IC = IC/Airtight
- NIC = Non IC
- NP = New Pan
- DP = Dropped Pan
- BP = Bracket Pan
- CP = Chicago Plenum

Source/System Watts/Delivered lm/LPW(Lumens/watt)

Values Based on Round 40° fixed

- CZ14** = Citizen 14W / 1285lm / 91LPW
- CZ20** = Citizen 21W / 1740lm / 83LPW
- AD14** = Ambient Dim 14.6W / 812lm / 55LPW
- AD20** = Ambient Dim 21.3W / 1396lm / 66LPW (AD 3019 only)

Type

- F = Fixed
- A = Adjustable

CCT

Fixed White

- 24 = 2400K
- 27 = 2700K
- 30 = 3000K
- 35 = 3500K
- 40 = 4000K

Ambient Dim

- 3019 = 3000K to 1900K
- 3022 = 3000K to 2200K (AD14 only)
- 2722 = 2700 to 2200K (AD14 only)

Beam

- SP = Spot
- NF = Narrow flood
- FL = Flood
- WF = Wide Flood

Driver (Lutron & EldoLED require inverter)

- C1 = 0-10V dimming, 1%, 120-277v
- C2 = TRIAC/ELV 2-wire, 1% 120V only (Leading/Trailing Edge)
- E1 = 0-10V Logarithmic Dim, 0.1%, 120-277v
- E2 = DALI-2, 0.1%, 120-277v
- E3 = 0-10V Linear Dim, 0.1%, 120-277v
- LTB = Hi-lume 1% with Fade-to-Black (former H-Series) digital EcoSystem Driver, 120-277v (LDE1)
- TR2 = 2 wire Phase Dimming down to 0.1% - Linear/Logarithmic
- EM = Emergency Pack
- C1-EM = C1 Emergency Pack (0-10V dimming, 1%, 120-277v)
- C2-EM = C2 Emergency Pack (TRIAC/ELV 2-wire, 1% 120V only (Leading/Trailing Edge))

Graffiti™ Trim

GRT

Shape

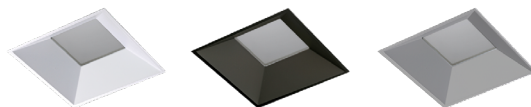
- RD = Round
- SQ = Square

Trim *Lens Required

- FT = Flanged
- ZT = Flangeless
- FST* = Flanged Shower
- ZST* = Flangeless Shower
- TEX2 = Extension Clips

Finish

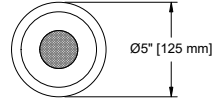
- WHT = White
- BLK = Black
- SLV = Silver



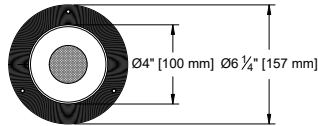
Lens

- 91A = Solite
- 79A = Frosted
- None

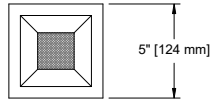
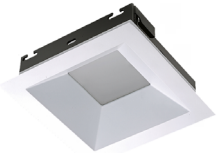
INFORMATION- TRIM



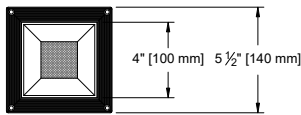
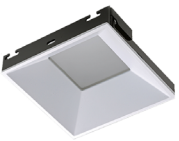
ROUND/ FLANGED



ROUND / FLANGELESS



SQUARE / FLANGED



SQUARE / FLANGELESS

Photometrics

[View additional photometric data](#)

*LED Technology rapidly changes. Please consult factory for latest specs and photometry.

Care & Maintenance

****LED's are sensitive electronic components and should be protected from dust and debris during the installation and maintenance process.**

[Read Fixture Care & Maintenance Guidelines](#)

Lens Guide

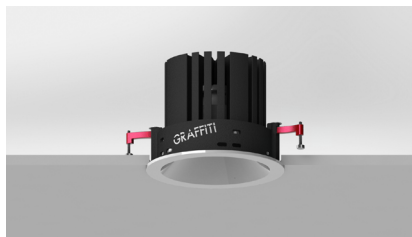
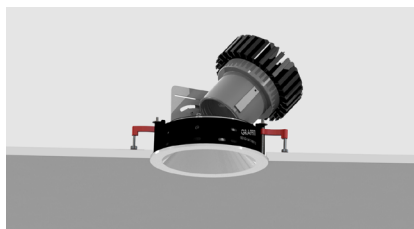
[View Lens Guide](#)

INFORMATION- HOUSING

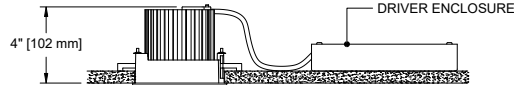
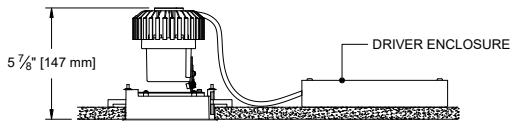
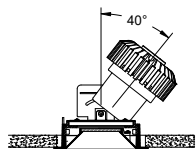
RETROFIT

For easy installation in existing ceilings.

ADJUSTABLE



FIXED

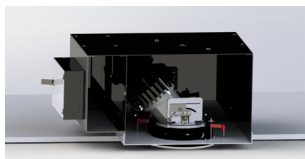


IC/NIC/CCP

For projects requiring housings or IC rated fixtures.

1287 Hanger Bars comes standard with fixed and adjustable housing (see below for hanger bar dimensions).

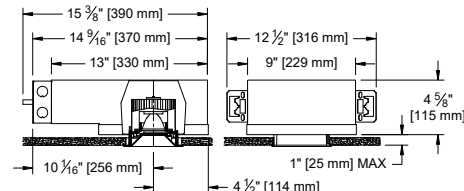
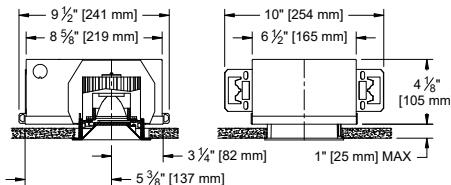
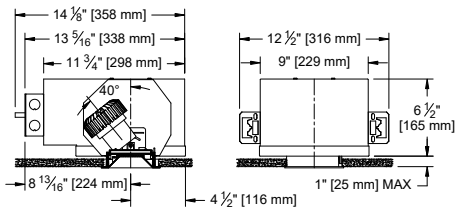
ADJUSTABLE All Drivers



FIXED C1/C2 Drivers, EldoLED



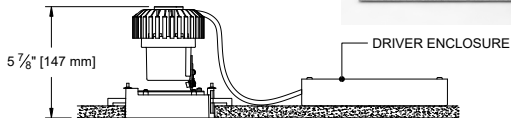
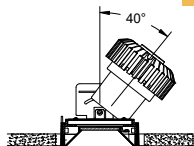
FIXED LUTRON



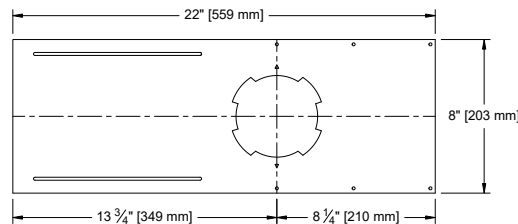
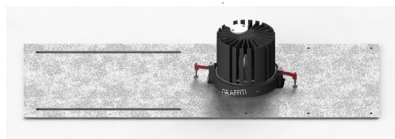
PAN

For new construction applications not requiring a housing.

ADJUSTABLE

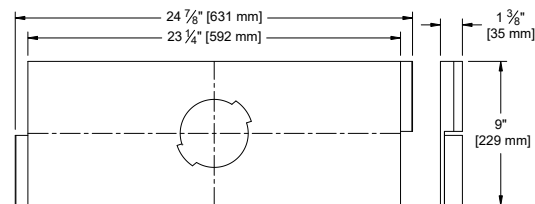
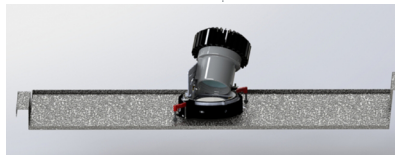


OPTION - New Pan



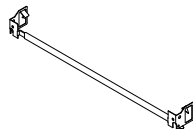
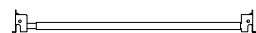
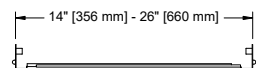
OPTION - Dropped Pan

for use in Armstrong® T-Bar ceilings

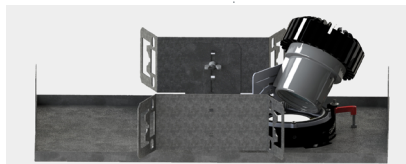


1287 Hanger Bar comes standard with Bracket Pan & IC/NIC

Maximum Extension: 26"



OPTION - Bracket Pan



FIXED

