

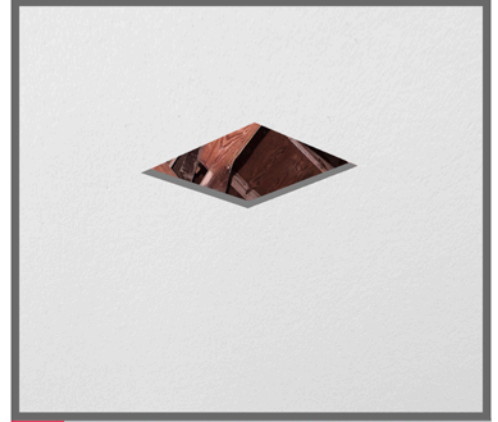
CAUTIONS AND WARNINGS:

1. This product *must* be installed in accordance with the applicable installation code by a licensed electrician familiar with the construction and operation of the product and hazards involved.
2. Power *must* be OFF when connecting the fixture. "Hot plugging" the light engine and driver will damage the LED source.
3. The light engine is low voltage and is factory wired to the driver. **DO NOT CONNECT LIGHT ENGINE TO THE BUILDING AC POWER.**

DISCLAIMER: Screw and hardware on the outer edge of adjustable head are **NOT** to be tampered with. **ANY** adjustment **WILL VOID** warranty.



A Install ceiling.



B Apply tape and joint compound. Cutout opening and prep for painting ceiling.



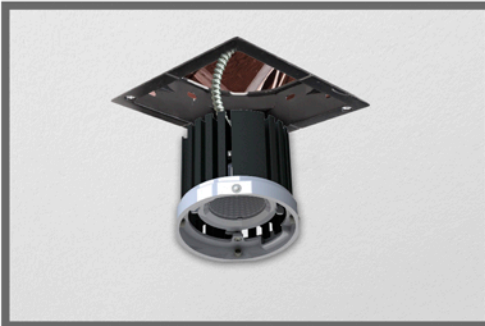
C Paint over ceiling before installation.



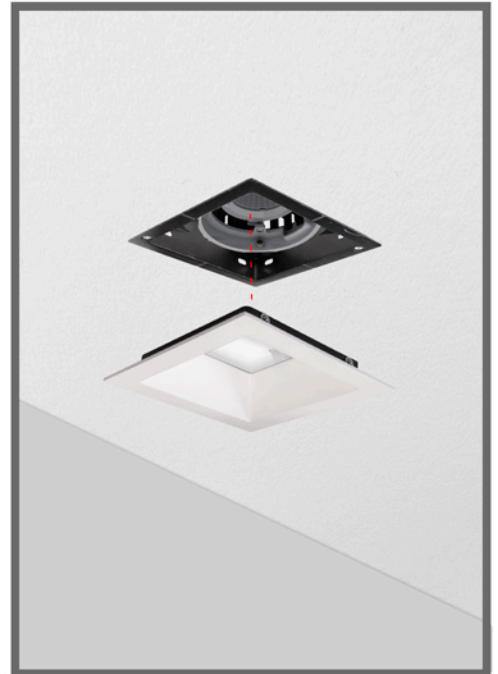
E Tighten screws to clamp receiver to ceiling. Finalize electrical wiring/connections.



D Slide receiver into ceiling.



F Slide light assembly into receiver. Ball plungers(4) on light assembly clicks into 4 slots on receiver



G After light assembly has been installed. Click flanged trim ball plungers (4) into receiver slots.



*Trim in view is GR- Square Flanged Trim

H Make sure trim ball plungers clicks into receiver to secure.

How to secure with safety cables?



Installation Instructions for Retrofit Square Flanged Trim GRF, GR, GRO, GRW

TRIMS AVAILABLE

