

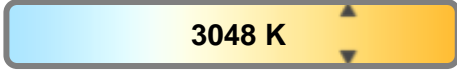
Light efficiency:



Light quality:



Color temperature:

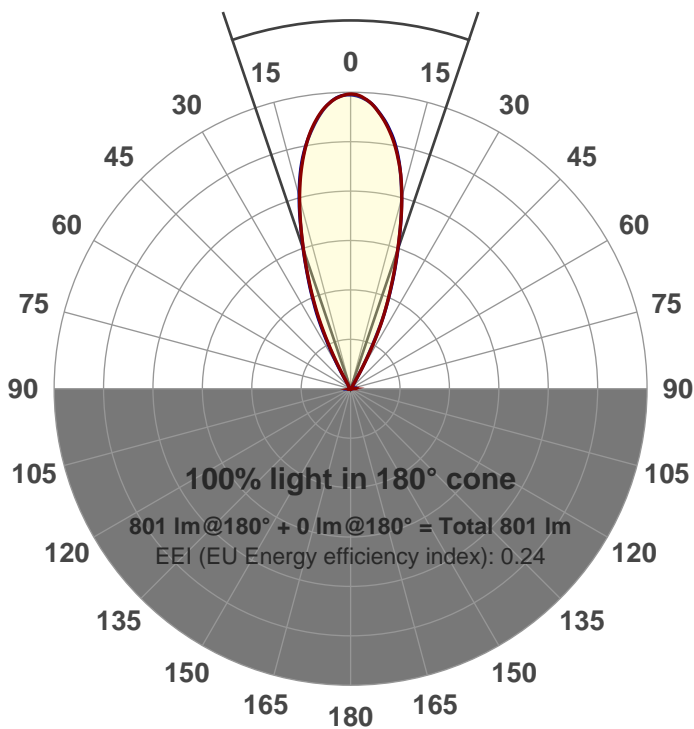


Output: 801 lm
Peak: 2027 cd
Power: 15.0 W
PF: 0.98



Beam angle

37.5°



Product name:
GR-AD-FL-RD
Item number:
GR-AD-FL-RD
Date and time:
8/9/2017 4:43:59 PM
Description:

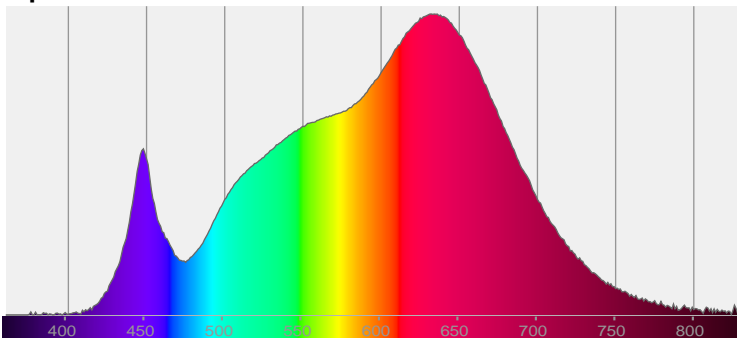
LUM: 801

PPF: 15.1

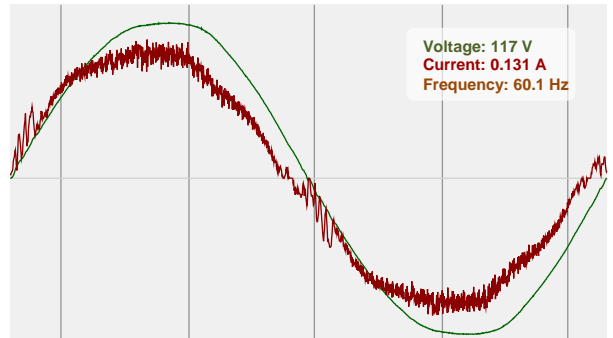


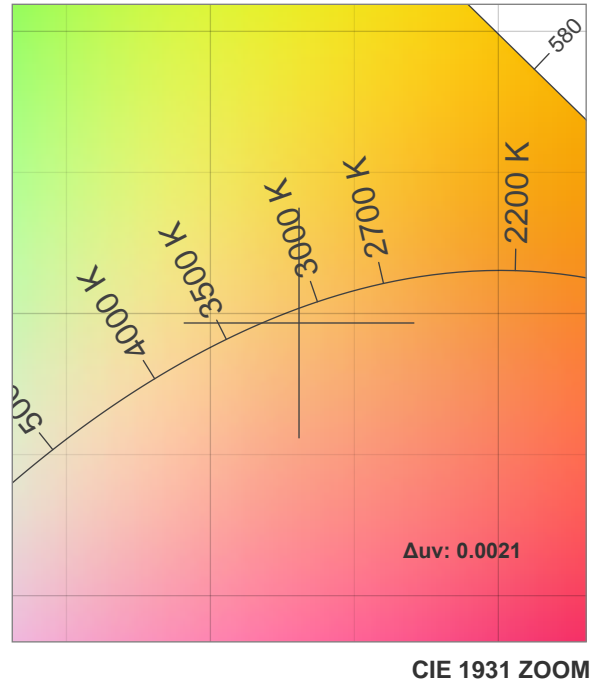
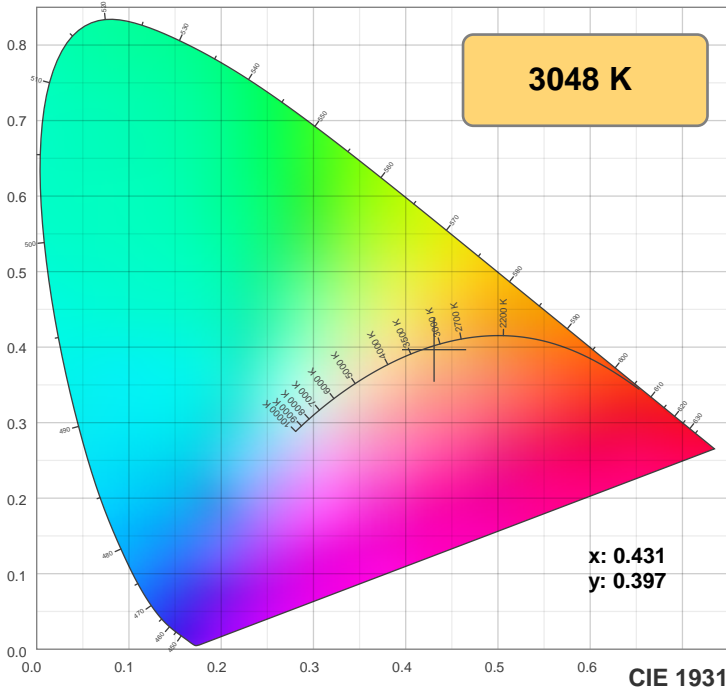
CIE 1931
x: 0.431
y: 0.397

Spectra

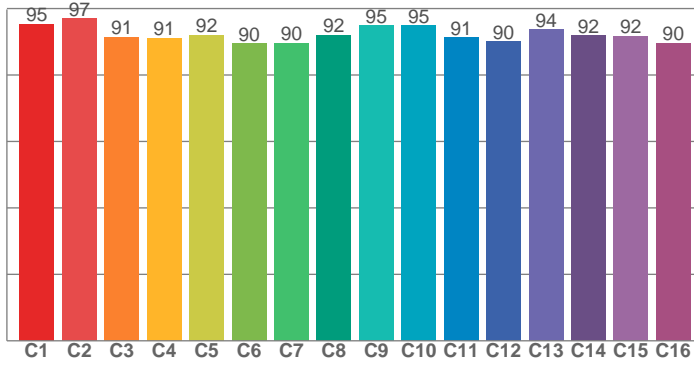


Power

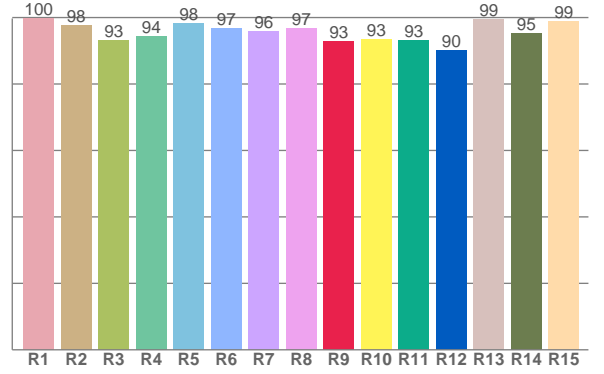




TM30: 92.6



CRI: 96.5 (R1-R8)



CRI R values, only R1-R8 are used to calculate final CRI value

R1	R2	R3	R4	R5	R6	R7	R8	R9	R10	R11	R12	R13	R14	R15
99.7	97.8	93.1	94.3	98.4	96.7	95.8	96.6	92.9	93.4	93.1	90.0	99.4	95.2	98.8

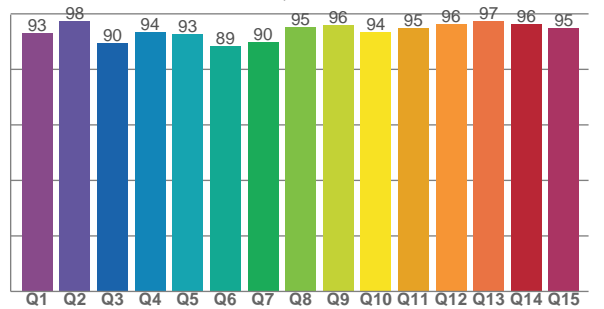
TM30 C values, 16 binned values out of total of 99 C values

C1	C2	C3	C4	C5	C6	C7	C8	C9	C10	C11	C12	C13	C14	C15	C16
95.3	97.0	91.4	91.1	92.0	89.6	89.6	92.1	94.9	95.0	91.4	90.1	93.7	91.8	91.7	89.7

CQS Q values

Q1	Q2	Q3	Q4	Q5	Q6	Q7	Q8	Q9	Q10	Q11	Q12	Q13	Q14	Q15
93.1	97.5	89.6	93.5	92.9	88.6	89.7	95.3	96.1	93.6	95.0	96.3	97.4	96.4	94.9

CQS: 93.2



Color parameters

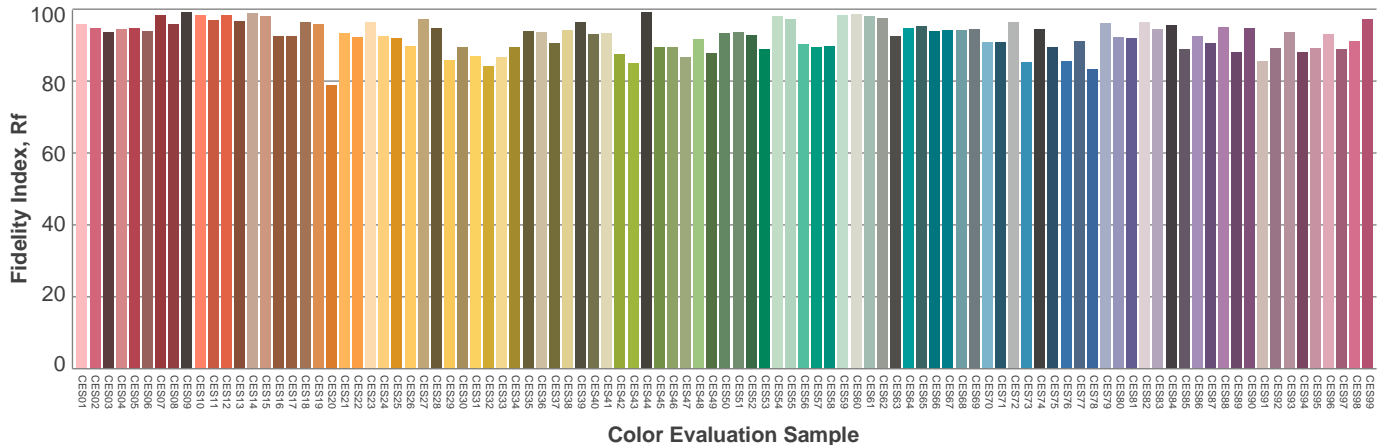
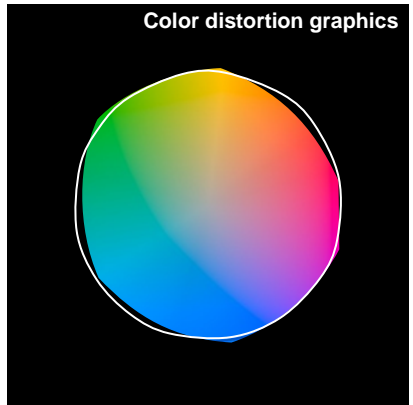
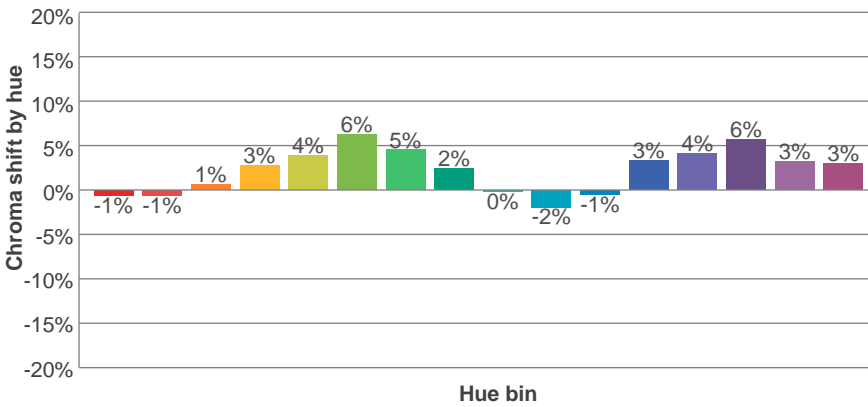
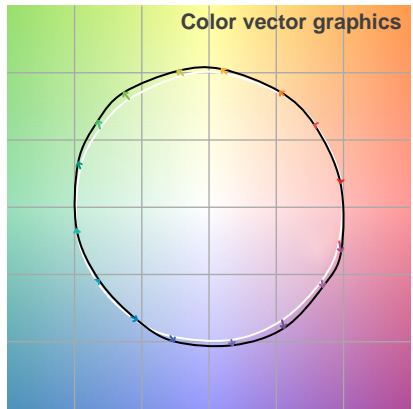
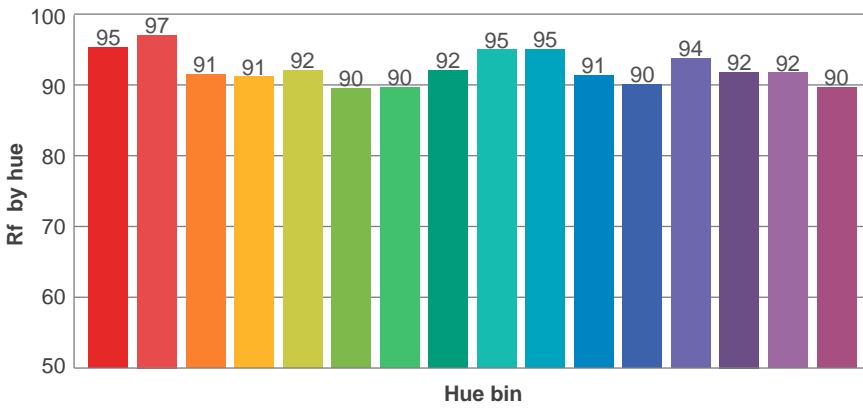
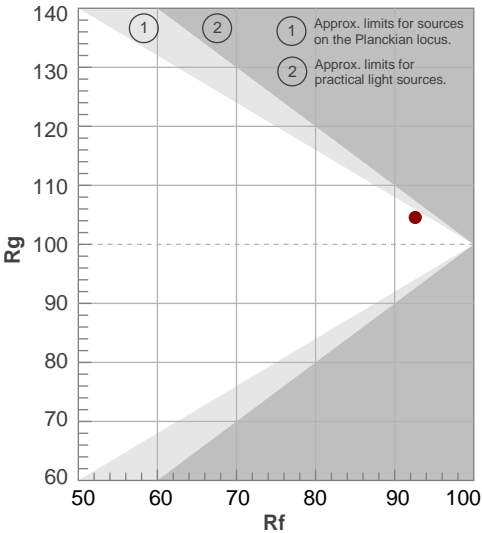
Color temperature	Color rendering index	Red component	Color fidelity	Color gamut	Color quality scale	Color coordinate cie 1931	Color coordinate cie 1931	Color coordinate	Color coordinate	Color deviation from black body
CCT	CRI	CRI R9	TM30 Rf	TM30 Rg	CQS	x	y	u	v	Δuv
3048 K	96.5	92.9	92.6	104.6	93.2	0.431	0.397	0.250	0.345	0.0021

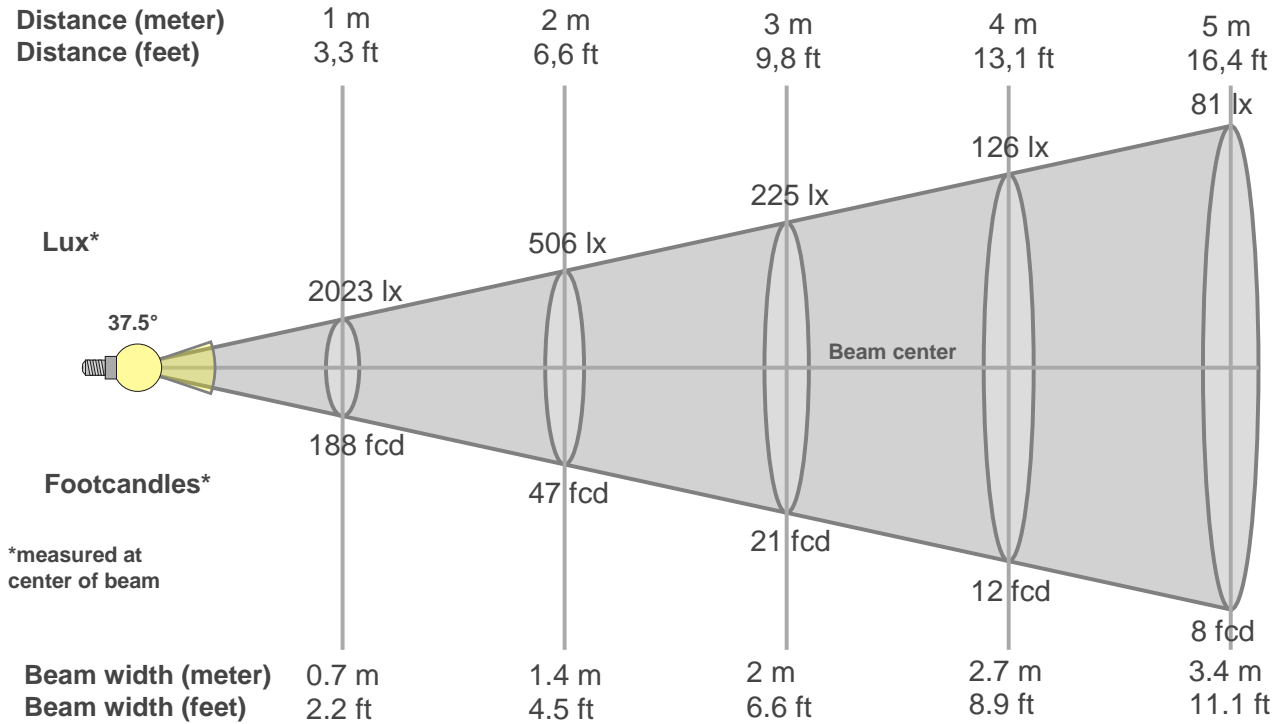
TM30 details

Rf 92.6
Fidelity index Rf

Rg 104.6
Gammut index Rg

Hue Bin	R _f	Graphic shifts (%)	
		Chroma	Hue
1	95	-1%	-2%
2	97	-1%	1%
3	91	1%	4%
4	91	3%	4%
5	92	4%	4%
6	90	6%	1%
7	90	5%	-4%
8	92	2%	-4%
9	95	0%	-3%
10	95	-2%	0%
11	91	-1%	5%
12	90	3%	4%
13	94	4%	0%
14	92	6%	-2%
15	92	3%	-3%
16	90	3%	-7%





Beam intensities from 1-20m

1m	2m	3m	4m	5m	6m	7m	8m	9m	10m	11m	12m	13m	14m	15m	16m	17m	18m	19m	20m
3.3ft	6.6ft	9.8ft	13.1ft	16.4ft	19.7ft	23ft	26.2ft	29.5ft	32.8ft	36.1ft	39.4ft	42.7ft	45.9ft	49.2ft	52.5ft	55.8ft	59.1ft	62.3ft	65.6ft
2023lx	506lx	225lx	126lx	81lx	56lx	41lx	32lx	25lx	20lx	17lx	14lx	12lx	10lx	9lx	8lx	7lx	6lx	6lx	5lx
188fcd	47fcd	20.9fcd	11.7fcd	7.5fcd	5.2fcd	3.8fcd	2.9fcd	2.3fcd	1.9fcd	1.6fcd	1.3fcd	1.1fcd	1fcd	0.8fcd	0.7fcd	0.7fcd	0.6fcd	0.5fcd	0.5fcd

Intensities in 0° c-plane

0°	2°	4°	6°	8°	10°	12°	14°	16°	18°	20°	22°	24°	26°	28°	30°	32°	34°	36°	38°
2023	2012	1976	1916	1832	1724	1593	1440	1264	1076	894	720	551	369	204	87	41	29	24	21
100%	99%	98%	95%	91%	85%	79%	71%	62%	53%	44%	36%	27%	18%	10%	4%	2%	1%	1%	1%

Intensities in 90° c-plane

0°	2°	4°	6°	8°	10°	12°	14°	16°	18°	20°	22°	24°	26°	28°	30°	32°	34°	36°	38°
2023	2013	1976	1912	1825	1725	1604	1453	1275	1082	902	739	584	411	247	121	42	28	23	21
100%	99%	98%	94%	90%	85%	79%	72%	63%	53%	45%	37%	29%	20%	12%	6%	2%	1%	1%	1%

Intensities in 180° c-plane

0°	2°	4°	6°	8°	10°	12°	14°	16°	18°	20°	22°	24°	26°	28°	30°	32°	34°	36°	38°
2023	2012	1971	1903	1820	1718	1594	1446	1269	1077	895	728	575	417	249	114	42	28	23	21
100%	99%	97%	94%	90%	85%	79%	71%	63%	53%	44%	36%	28%	21%	12%	6%	2%	1%	1%	1%

Intensities in 270° c-plane

0°	2°	4°	6°	8°	10°	12°	14°	16°	18°	20°	22°	24°	26°	28°	30°	32°	34°	36°	38°
2023	2006	1970	1907	1828	1728	1599	1441	1266	1082	903	736	574	391	228	101	39	27	22	20
100%	99%	97%	94%	90%	85%	79%	71%	63%	53%	45%	36%	28%	19%	11%	5%	2%	1%	1%	1%

Beam angle 50%	Field angle 10%	Cutoff angle 2,5%	Intensity ratio in 120° cone	Intensity ratio in 90° cone
37.5°	56.8°	62.8°	1.0%	1.0%

THIS PAGE INTENSIONALLY LEFT BLANK