

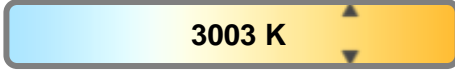
Light efficiency:



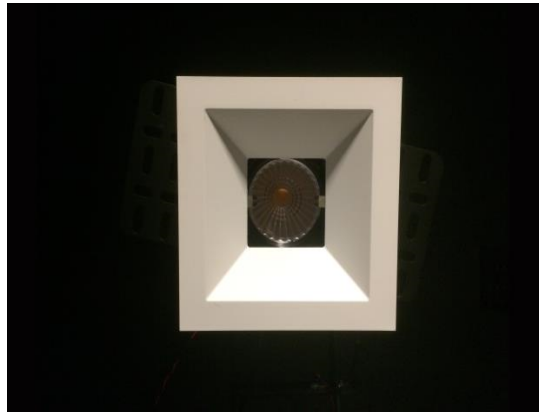
Light quality:



Color temperature:

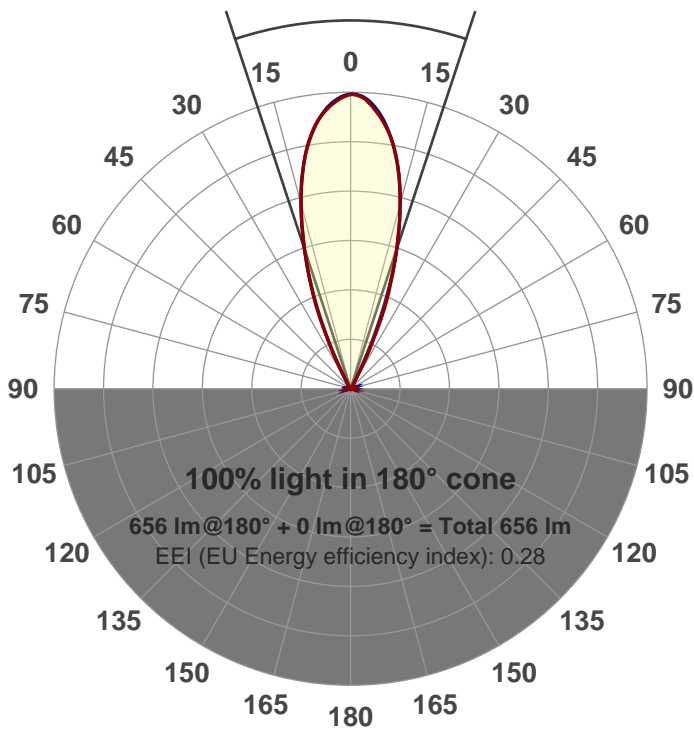


Output: 656 lm
Peak: 1828 cd
Power: 15.2 W
PF: 0.98



Beam angle

36.5°



Product name:
GR-AD-FL-SQ
Item number:
GR-AD-FL-SQ
Date and time:
5/1/2017 2:31:41 PM
Description:

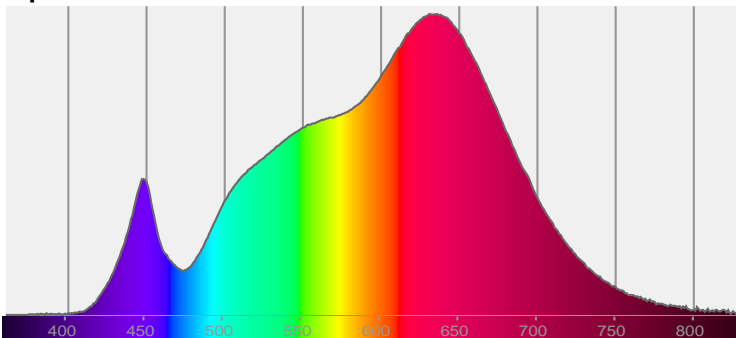
LUM: 656

PPF: 11.1

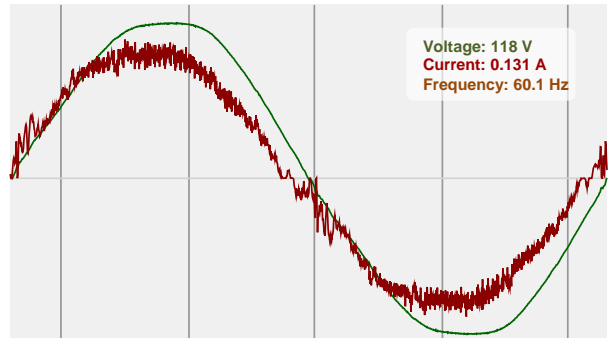


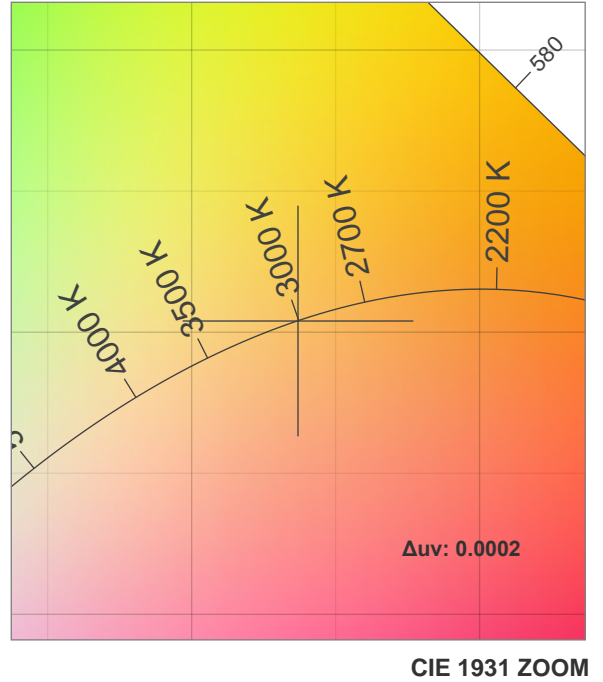
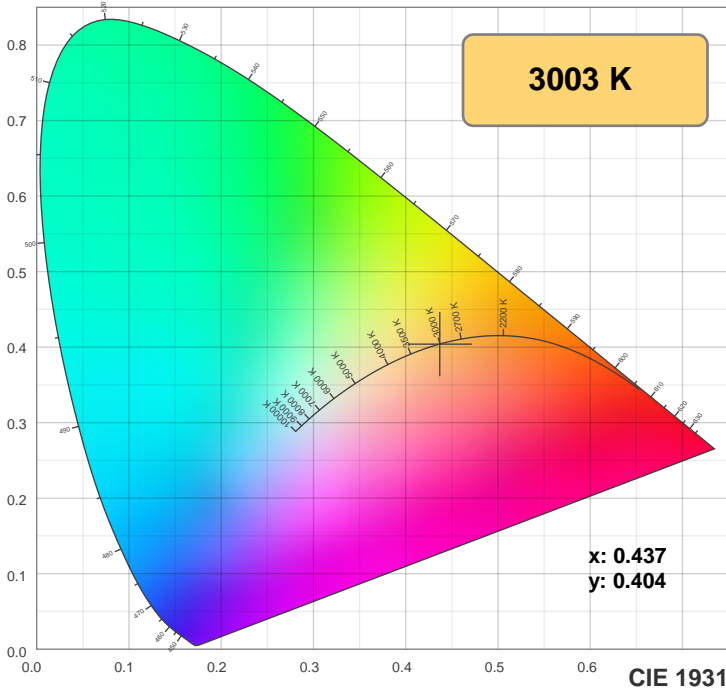
CIE 1931
x: 0.437
y: 0.404

Spectra

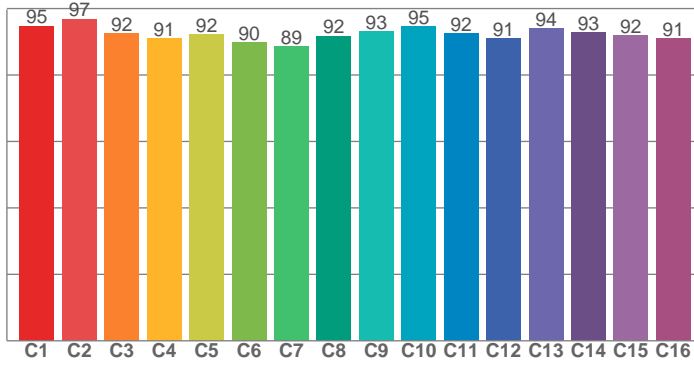


Power

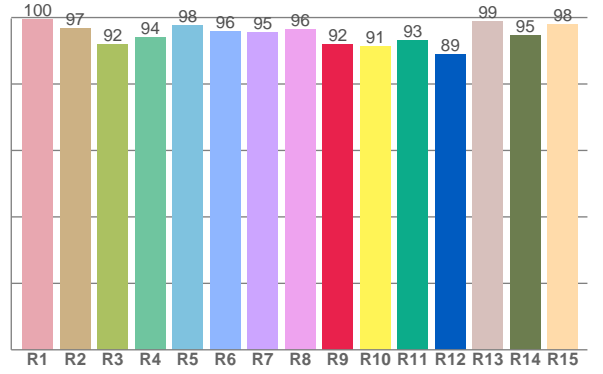




TM30: 92.7



CRI: 96.0 (R1-R8)



CRI R values, only R1-R8 are used to calculate final CRI value

R1	R2	R3	R4	R5	R6	R7	R8	R9	R10	R11	R12	R13	R14	R15
99.5	96.8	91.9	94.1	97.7	96.0	95.5	96.5	92.0	91.3	93.1	89.0	98.8	94.5	98.0

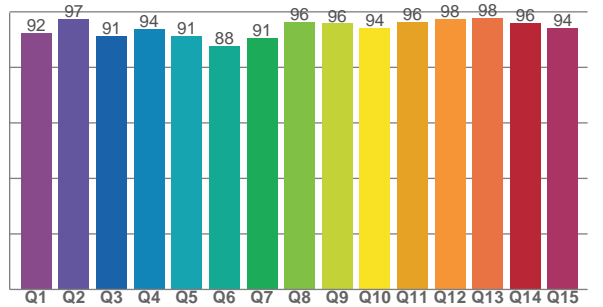
TM30 C values, 16 binned values out of total of 99 C values

C1	C2	C3	C4	C5	C6	C7	C8	C9	C10	C11	C12	C13	C14	C15	C16
94.8	96.9	92.4	91.0	92.1	89.7	88.5	91.7	93.1	94.5	92.5	91.0	94.0	92.8	91.9	91.1

CQS Q values

Q1	Q2	Q3	Q4	Q5	Q6	Q7	Q8	Q9	Q10	Q11	Q12	Q13	Q14	Q15
92.4	97.5	91.2	93.9	91.4	87.7	90.7	96.4	95.8	94.2	96.3	97.5	97.7	96.1	94.3

CQS: 93.3



Color parameters

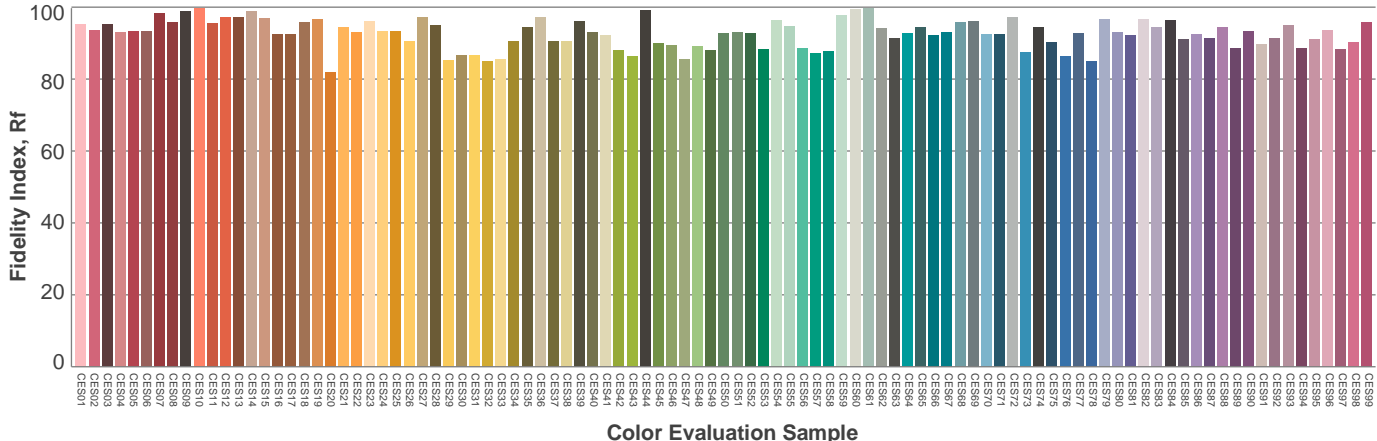
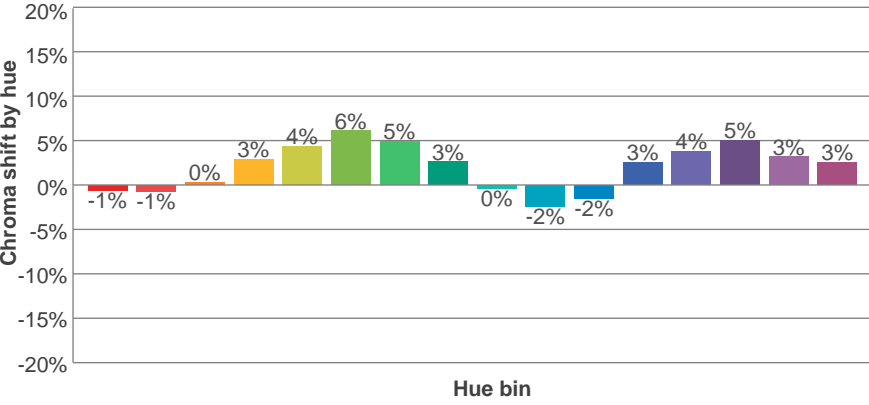
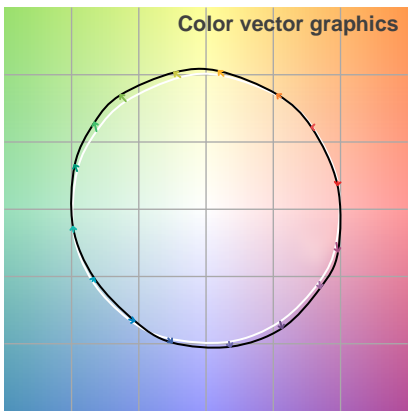
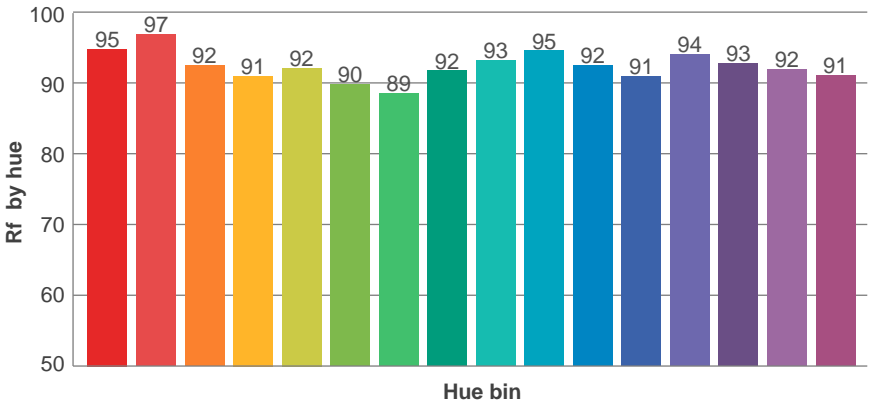
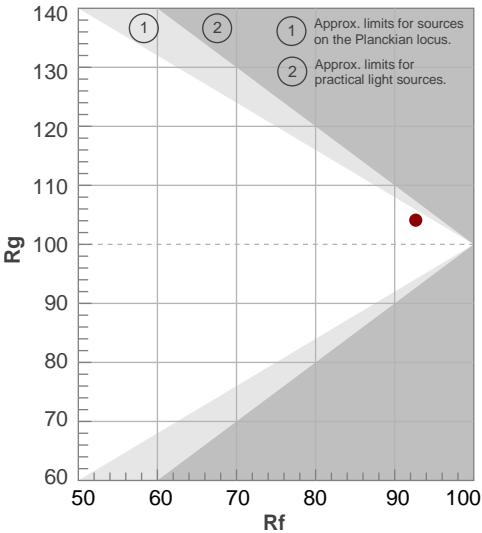
Color temperature	Color rendering index	Red component	Color fidelity	Color gamut	Color quality scale	Color coordinate cie 1931	Color coordinate cie 1931	Color coordinate	Color coordinate	Color deviation from black body
CCT	CRI	CRI R9	TM30 Rf	TM30 Rg	CQS	x	y	u	v	Δuv
3003 K	96.0	92.0	92.7	104.1	93.3	0.437	0.404	0.251	0.348	0.0002

TM30 details

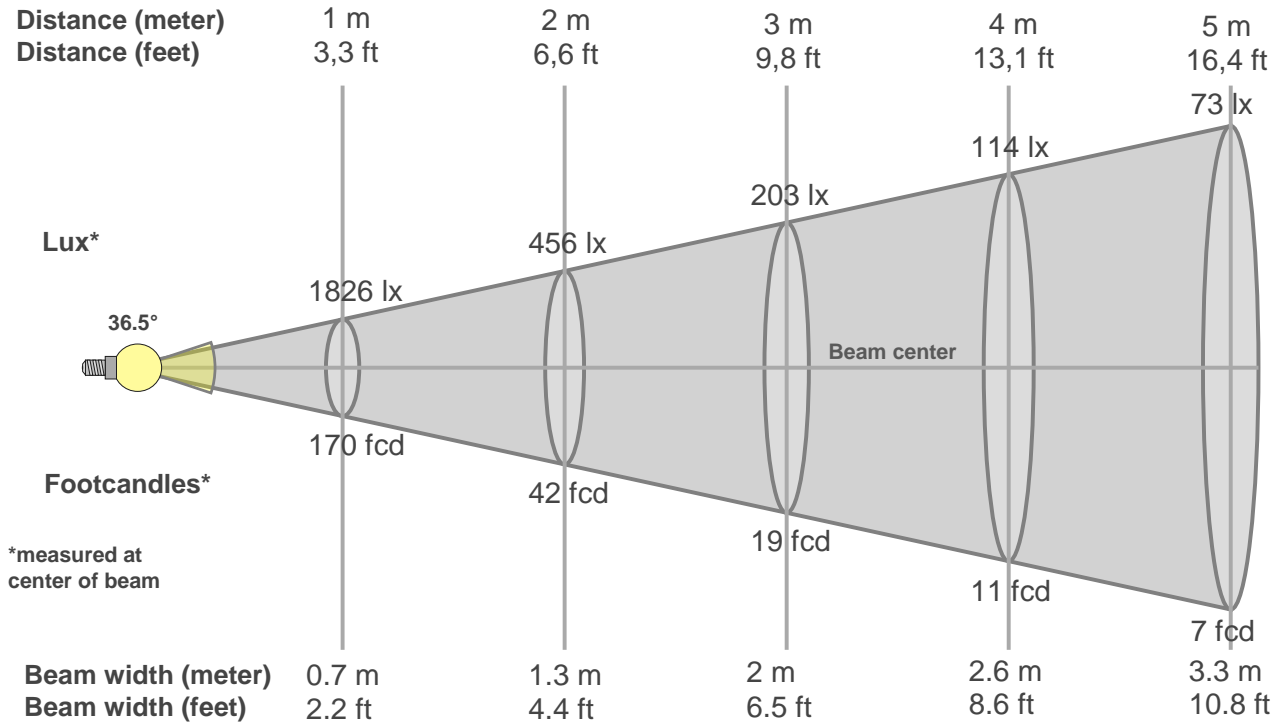
Rf 92.7
Fidelity index Rf

Rg 104.1
Gammut index Rg

Hue Bin	R _f	Graphic shifts (%)	
		Chroma	Hue
1	95	-1%	-2%
2	97	-1%	1%
3	92	0%	3%
4	91	3%	4%
5	92	4%	4%
6	90	6%	1%
7	89	5%	-4%
8	92	3%	-4%
9	93	0%	-4%
10	95	-2%	-1%
11	92	-2%	4%
12	91	3%	3%
13	94	4%	0%
14	93	5%	-1%
15	92	3%	-3%
16	91	3%	-6%



Beam details



Beam intensities from 1-20m

1m	2m	3m	4m	5m	6m	7m	8m	9m	10m	11m	12m	13m	14m	15m	16m	17m	18m	19m	20m
3.3ft	6.6ft	9.8ft	13.1ft	16.4ft	19.7ft	23ft	26.2ft	29.5ft	32.8ft	36.1ft	39.4ft	42.7ft	45.9ft	49.2ft	52.5ft	55.8ft	59.1ft	62.3ft	65.6ft
1826lx	456lx	203lx	114lx	73lx	51lx	37lx	29lx	23lx	18lx	15lx	13lx	11lx	9lx	8lx	7lx	6lx	6lx	5lx	5lx
169.6fcd	42.4fcd	18.8fcd	10.6fcd	6.8fcd	4.7fcd	3.5fcd	2.7fcd	2.1fcd	1.7fcd	1.4fcd	1.2fcd	1fcd	0.9fcd	0.8fcd	0.7fcd	0.6fcd	0.5fcd	0.5fcd	0.4fcd

Intensities in 0° c-plane

0°	2°	4°	6°	8°	10°	12°	14°	16°	18°	20°	22°	24°	26°	28°	30°	32°	34°	36°	38°
1826	1802	1761	1707	1634	1533	1408	1263	1103	935	767	607	421	265	113	44	29	23	20	17
100%	99%	96%	93%	89%	84%	77%	69%	60%	51%	42%	33%	23%	15%	6%	2%	2%	1%	1%	1%

Intensities in 90° c-plane

0°	2°	4°	6°	8°	10°	12°	14°	16°	18°	20°	22°	24°	26°	28°	30°	32°	34°	36°	38°
1826	1810	1770	1710	1628	1530	1408	1268	1108	937	765	577	392	217	94	45	31	25	21	18
100%	99%	97%	94%	89%	84%	77%	69%	61%	51%	42%	32%	21%	12%	5%	2%	2%	1%	1%	1%

Intensities in 180° c-plane

0°	2°	4°	6°	8°	10°	12°	14°	16°	18°	20°	22°	24°	26°	28°	30°	32°	34°	36°	38°
1826	1812	1767	1702	1626	1531	1411	1267	1107	934	769	611	426	265	114	44	29	23	20	18
100%	99%	97%	93%	89%	84%	77%	69%	61%	51%	42%	33%	23%	15%	6%	2%	2%	1%	1%	1%

Intensities in 270° c-plane

0°	2°	4°	6°	8°	10°	12°	14°	16°	18°	20°	22°	24°	26°	28°	30°	32°	34°	36°	38°
1826	1818	1781	1717	1633	1529	1406	1264	1104	936	751	548	352	172	80	45	31	24	21	18
100%	100%	98%	94%	89%	84%	77%	69%	60%	51%	41%	30%	19%	9%	4%	2%	2%	1%	1%	1%

Beam angle 50%	Field angle 10%	Cutoff angle 2,5%	Intensity ratio in 120° cone	Intensity ratio in 90° cone
36.5°	53.2°	59.8°	1.0%	1.0%

