

Light efficiency:



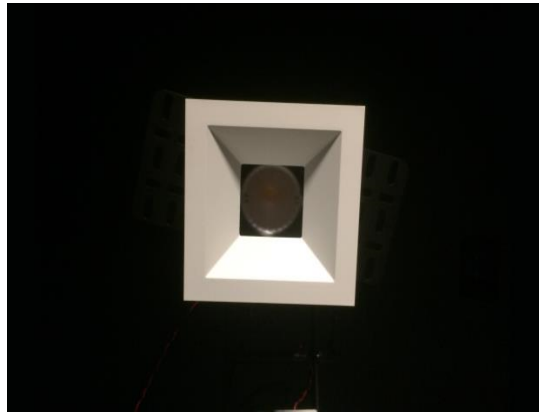
Light quality:



Color temperature:

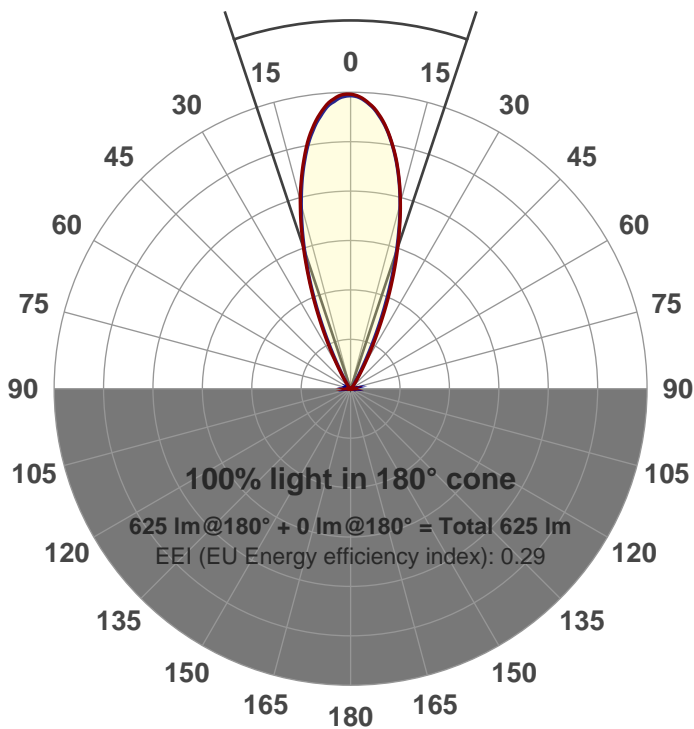


Output: 625 lm
Peak: 1559 cd
Power: 15.0 W
PF: 0.98



Beam angle

36.9°



Product name:
GR-AD-FL-SQ-91A
Item number:
GR-AD-FL-SQ-91A
Date and time:
5/1/2017 2:48:24 PM
Description:

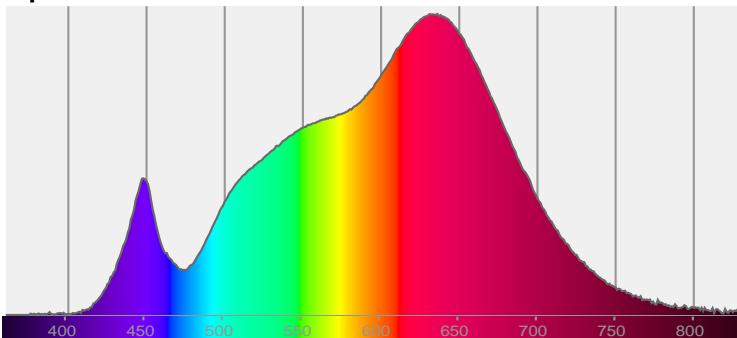
LUM: 625

PPF: 10.6

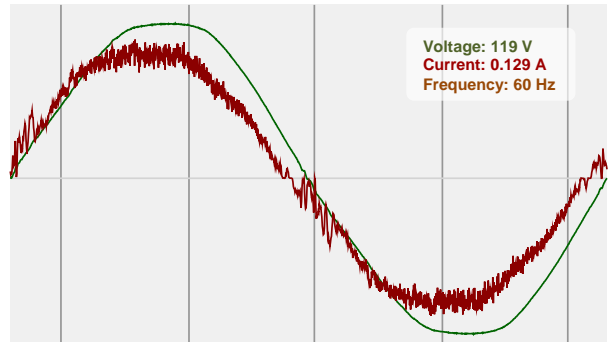


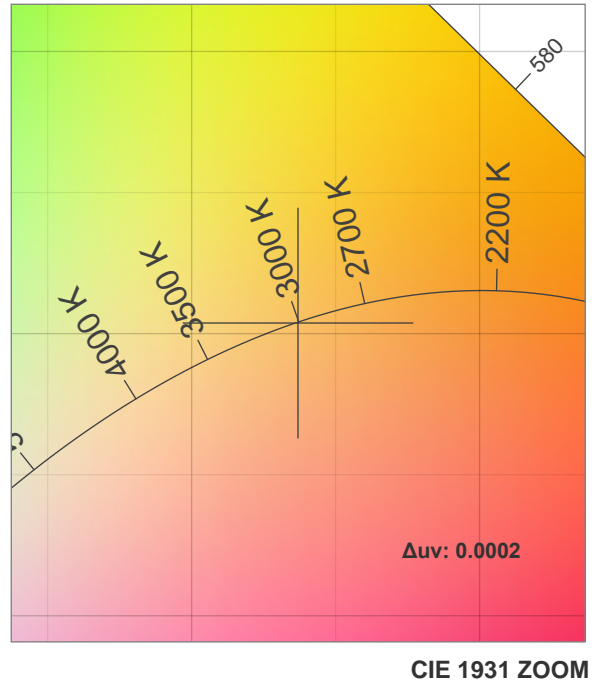
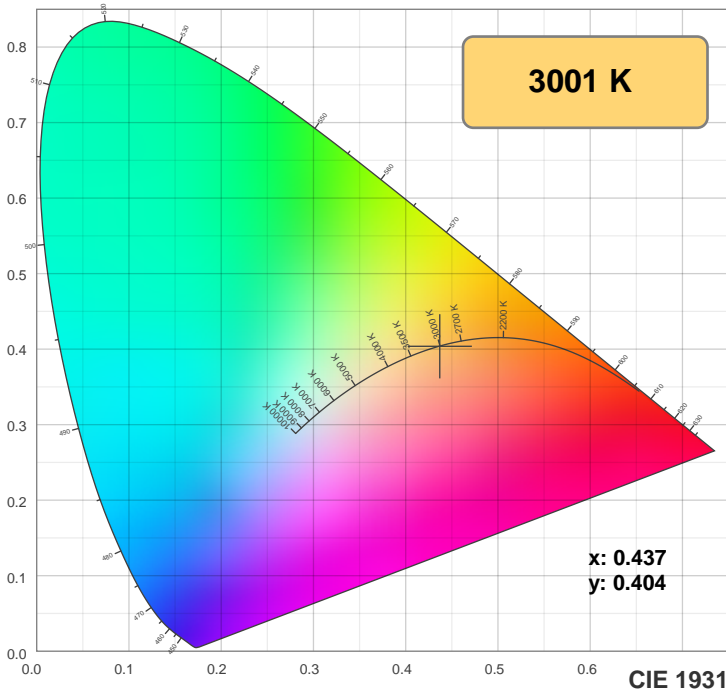
CIE 1931
x: 0.437
y: 0.404

Spectra

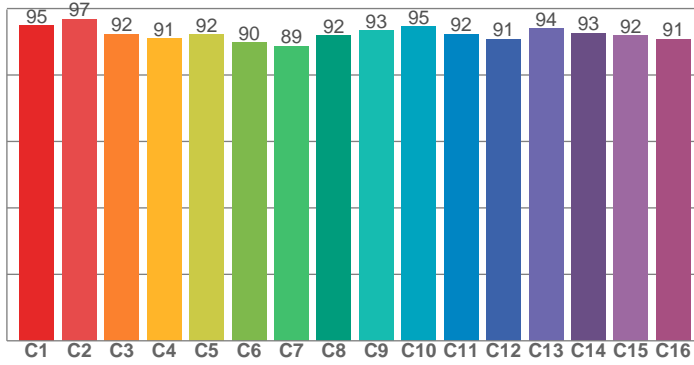


Power

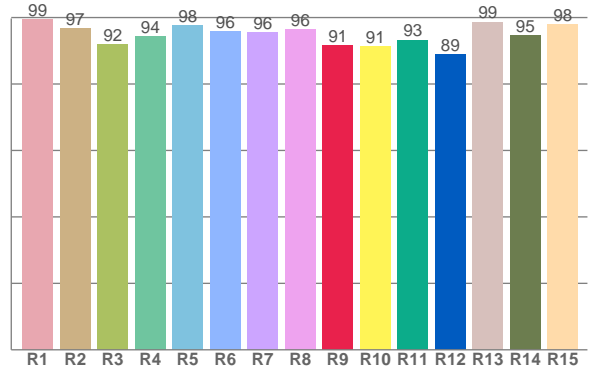




TM30: 92.7



CRI: 96.0 (R1-R8)



CRI R values, only R1-R8 are used to calculate final CRI value

R1	R2	R3	R4	R5	R6	R7	R8	R9	R10	R11	R12	R13	R14	R15
99.5	96.8	92.0	94.3	97.7	96.0	95.6	96.4	91.5	91.3	93.3	88.8	98.7	94.6	97.9

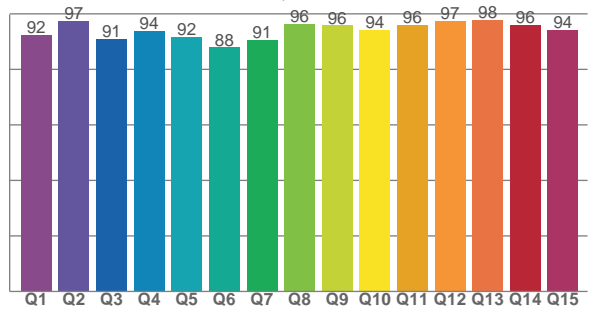
TM30 C values, 16 binned values out of total of 99 C values

C1	C2	C3	C4	C5	C6	C7	C8	C9	C10	C11	C12	C13	C14	C15	C16
94.8	96.9	92.3	91.1	92.2	89.8	88.8	91.9	93.4	94.7	92.3	90.9	94.0	92.7	91.9	90.9

CQS Q values

Q1	Q2	Q3	Q4	Q5	Q6	Q7	Q8	Q9	Q10	Q11	Q12	Q13	Q14	Q15
92.4	97.5	91.0	93.9	91.6	87.9	90.6	96.2	95.8	94.1	96.1	97.5	97.8	96.0	94.2

CQS: 93.3



Color parameters

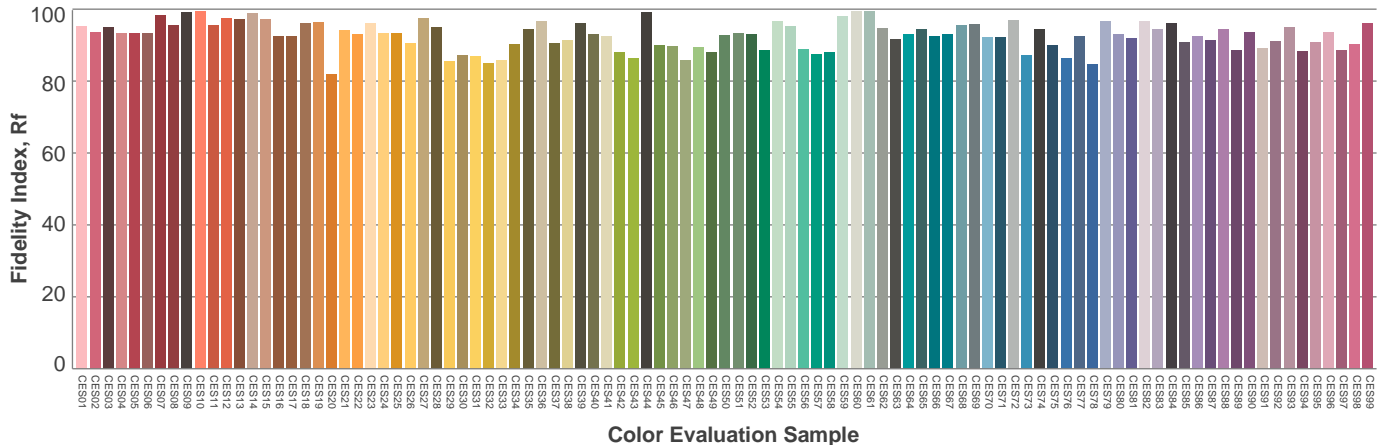
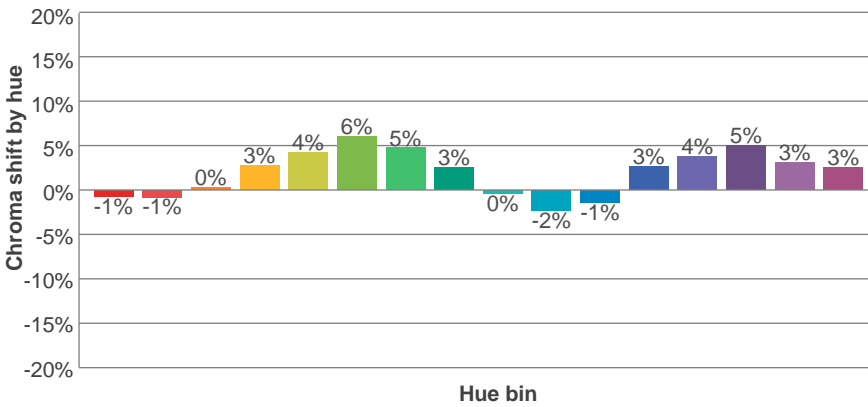
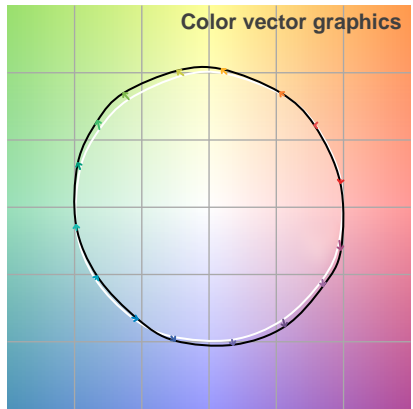
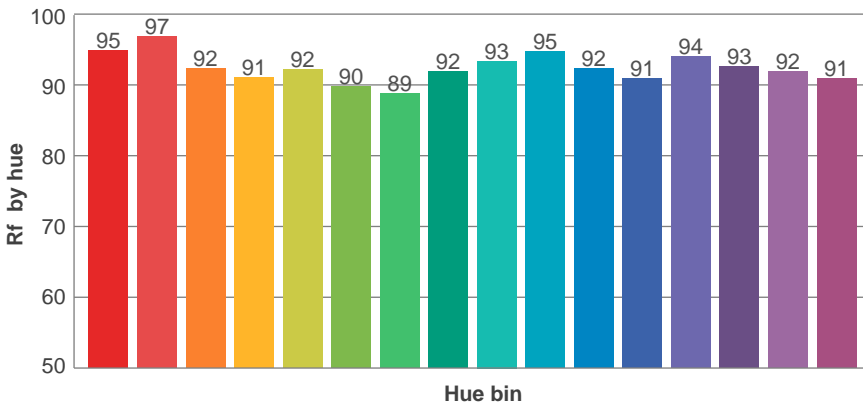
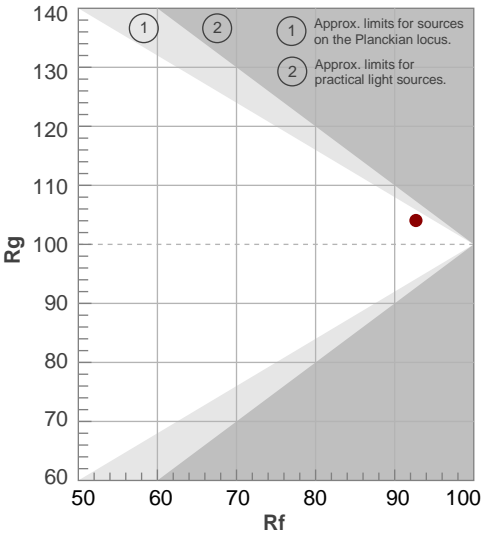
Color temperature	Color rendering index	Red component	Color fidelity	Color gamut	Color quality scale	Color coordinate cie 1931	Color coordinate cie 1931	Color coordinate	Color coordinate	Color deviation from black body
CCT	CRI	CRI R9	TM30 Rf	TM30 Rg	CQS	x	y	u	v	Δuv
3001 K	96.0	91.5	92.7	104.0	93.3	0.437	0.404	0.251	0.348	0.0002

TM30 details

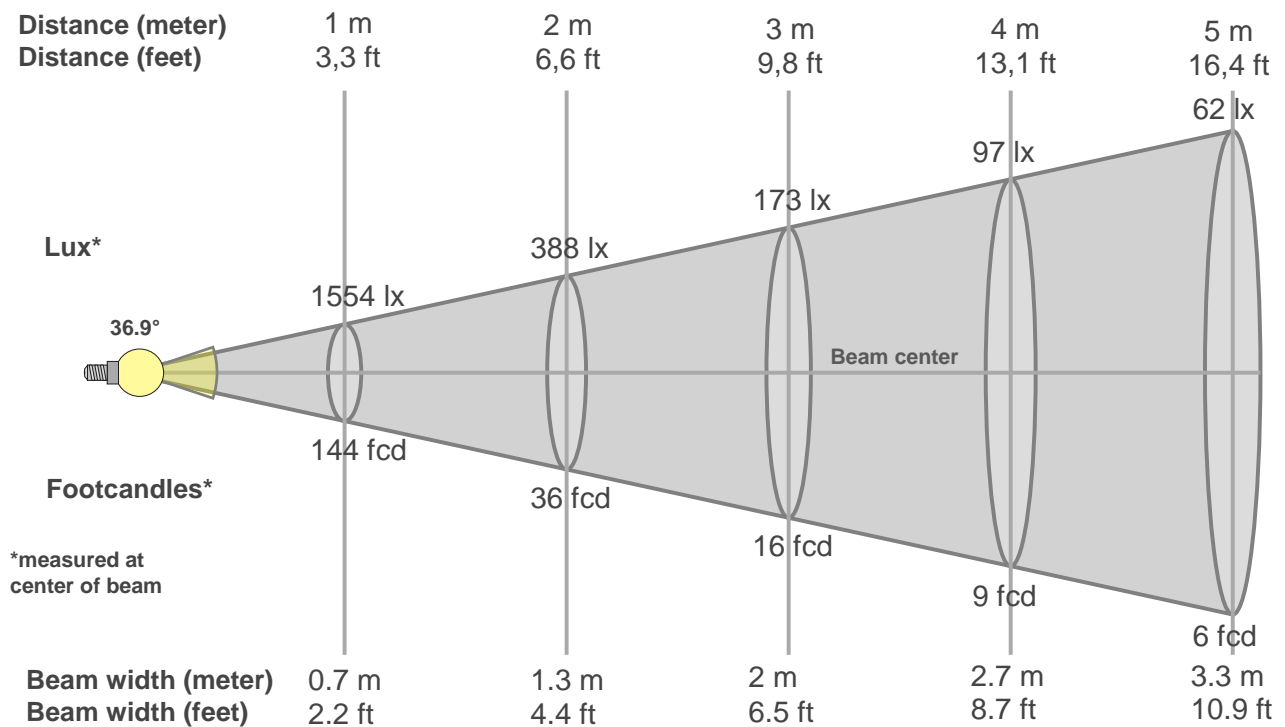
Rf 92.7
Fidelity index Rf

Rg 104.0
Gammut index Rg

Hue Bin	R _f	Graphic shifts (%)	
		Chroma	Hue
1	95	-1%	-2%
2	97	-1%	1%
3	92	0%	3%
4	91	3%	4%
5	92	4%	4%
6	90	6%	1%
7	89	5%	-4%
8	92	3%	-4%
9	93	0%	-4%
10	95	-2%	-1%
11	92	-1%	4%
12	91	3%	3%
13	94	4%	0%
14	93	5%	-2%
15	92	3%	-3%
16	91	3%	-6%



Beam details



Beam intensities from 1-20m

1m	2m	3m	4m	5m	6m	7m	8m	9m	10m	11m	12m	13m	14m	15m	16m	17m	18m	19m	20m
3.3ft	6.6ft	9.8ft	13.1ft	16.4ft	19.7ft	23ft	26.2ft	29.5ft	32.8ft	36.1ft	39.4ft	42.7ft	45.9ft	49.2ft	52.5ft	55.8ft	59.1ft	62.3ft	65.6ft
1554lx	388lx	173lx	97lx	62lx	43lx	32lx	24lx	19lx	16lx	13lx	11lx	9lx	8lx	7lx	6lx	5lx	5lx	4lx	4lx
144.3fcd	36.1fcd	16fcd	9fcd	5.8fcd	4fcd	2.9fcd	2.3fcd	1.8fcd	1.4fcd	1.2fcd	1fcd	0.9fcd	0.7fcd	0.6fcd	0.6fcd	0.5fcd	0.4fcd	0.4fcd	0.4fcd

Intensities in 0° c-plane

0°	2°	4°	6°	8°	10°	12°	14°	16°	18°	20°	22°	24°	26°	28°	30°	32°	34°	36°	38°
1554	1553	1525	1474	1406	1318	1210	1092	961	820	676	537	408	294	202	132	88	60	42	30
100%	100%	98%	95%	90%	85%	78%	70%	62%	53%	43%	35%	26%	19%	13%	8%	6%	4%	3%	2%

Intensities in 90° c-plane

0°	2°	4°	6°	8°	10°	12°	14°	16°	18°	20°	22°	24°	26°	28°	30°	32°	34°	36°	38°
1554	1540	1511	1460	1391	1304	1196	1074	940	799	656	510	371	250	159	98	63	43	31	25
100%	99%	97%	94%	90%	84%	77%	69%	60%	51%	42%	33%	24%	16%	10%	6%	4%	3%	2%	2%

Intensities in 180° c-plane

0°	2°	4°	6°	8°	10°	12°	14°	16°	18°	20°	22°	24°	26°	28°	30°	32°	34°	36°	38°
1554	1542	1507	1456	1385	1297	1197	1081	953	817	684	550	421	308	214	144	97	67	47	34
100%	99%	97%	94%	89%	83%	77%	70%	61%	53%	44%	35%	27%	20%	14%	9%	6%	4%	3%	2%

Intensities in 270° c-plane

0°	2°	4°	6°	8°	10°	12°	14°	16°	18°	20°	22°	24°	26°	28°	30°	32°	34°	36°	38°
1554	1537	1503	1450	1382	1294	1192	1075	942	799	652	505	368	247	154	92	57	39	30	25
100%	99%	97%	93%	89%	83%	77%	69%	61%	51%	42%	33%	24%	16%	10%	6%	4%	3%	2%	2%

Beam angle 50%	Field angle 10%	Cutoff angle 2,5%	Intensity ratio in 120° cone	Intensity ratio in 90° cone
36.9°	57.5°	71.1°	1.0%	1.0%

