

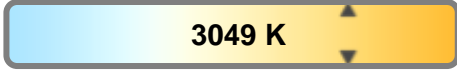
Light efficiency:



Light quality:



Color temperature:

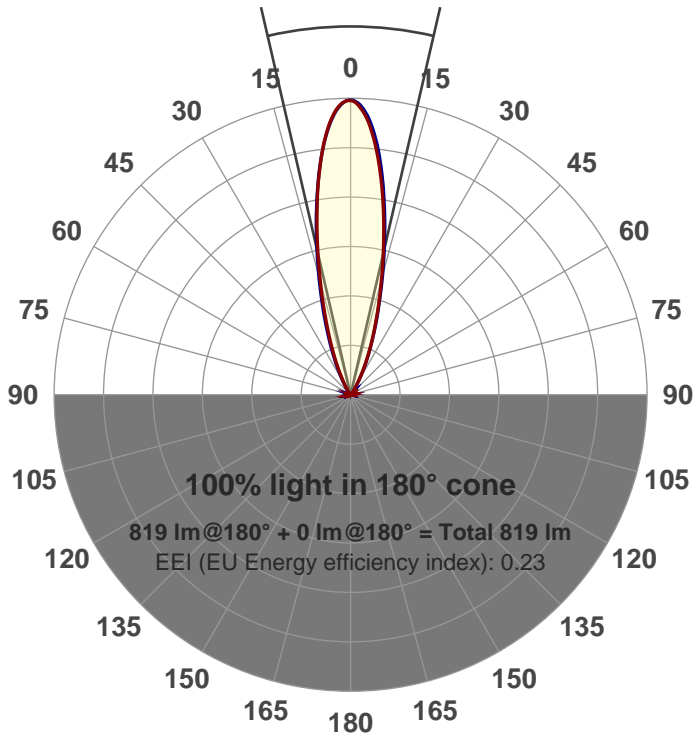


Output: 819 lm
Peak: 3093 cd
Power: 15.0 W
PF: 0.98



Beam angle

26°



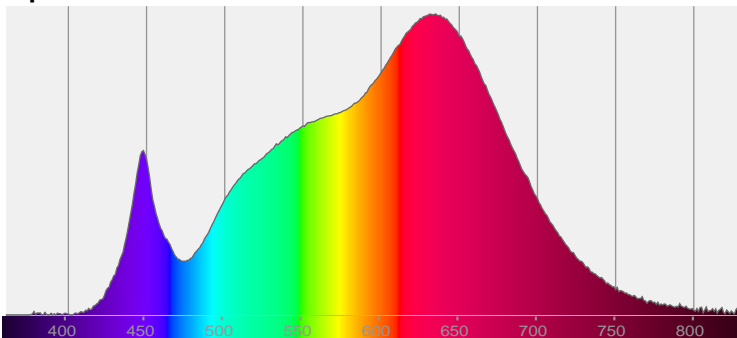
Product name:
GR-AD-NF-RD-91A
Item number:
GR-AD-NF-RD-91A
Date and time:
8/9/2017 4:35:46 PM
Description:

LUM: 819
PPF: 15.4

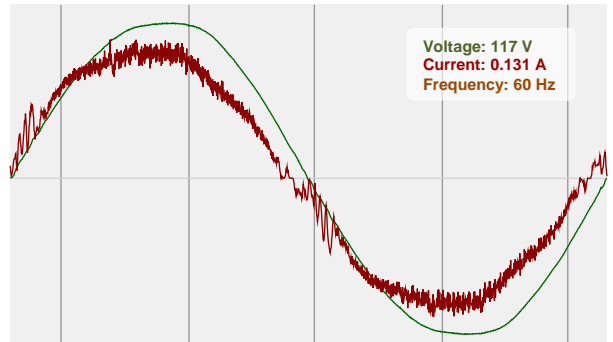


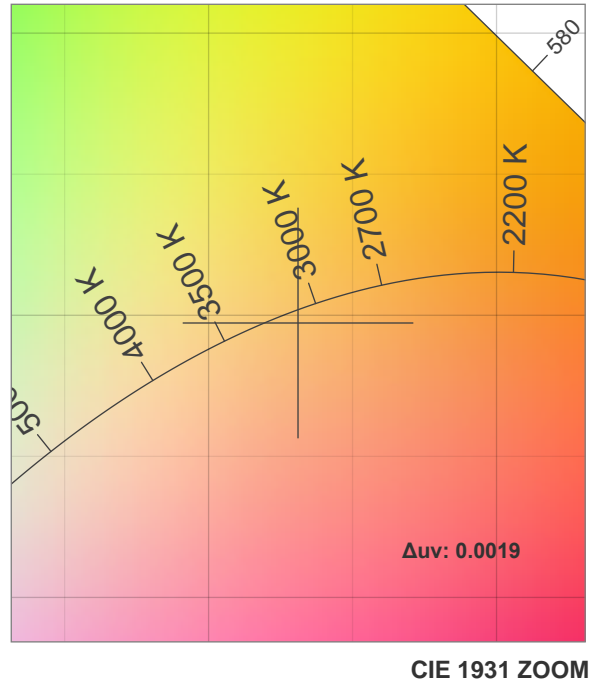
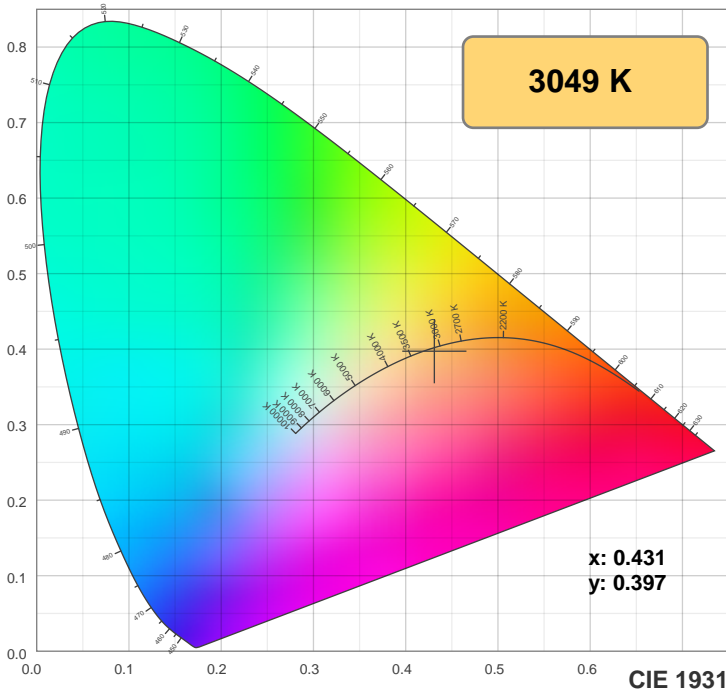
CIE 1931
x: 0.431
y: 0.397

Spectra

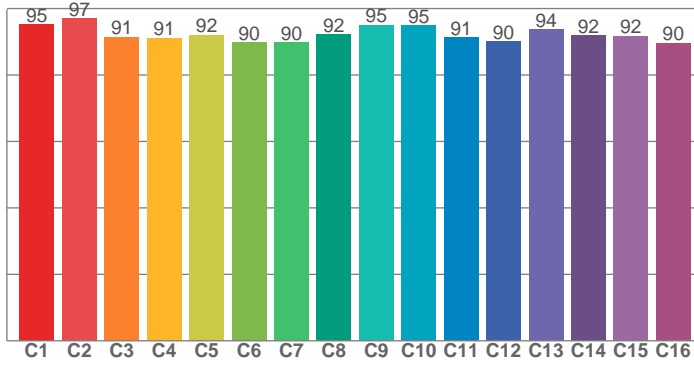


Power

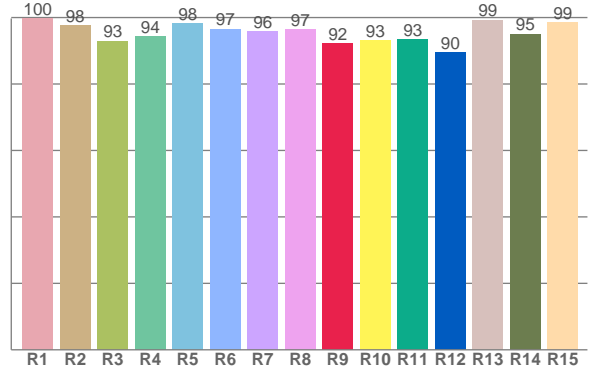




TM30: 92.6



CRI: 96.5 (R1-R8)



CRI R values, only R1-R8 are used to calculate final CRI value

R1	R2	R3	R4	R5	R6	R7	R8	R9	R10	R11	R12	R13	R14	R15
99.9	97.6	93.0	94.5	98.3	96.6	95.8	96.5	92.2	93.0	93.3	89.6	99.3	95.1	98.6

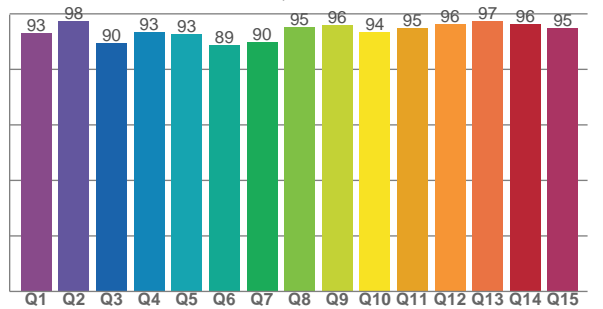
TM30 C values, 16 binned values out of total of 99 C values

C1	C2	C3	C4	C5	C6	C7	C8	C9	C10	C11	C12	C13	C14	C15	C16
95.3	97.0	91.4	91.2	92.1	89.7	89.8	92.3	95.0	94.9	91.3	90.1	93.7	91.8	91.7	89.7

CQS Q values

Q1	Q2	Q3	Q4	Q5	Q6	Q7	Q8	Q9	Q10	Q11	Q12	Q13	Q14	Q15
93.0	97.5	89.6	93.4	92.9	88.7	89.8	95.3	96.1	93.6	95.0	96.3	97.4	96.2	94.8

CQS: 93.2



Color parameters

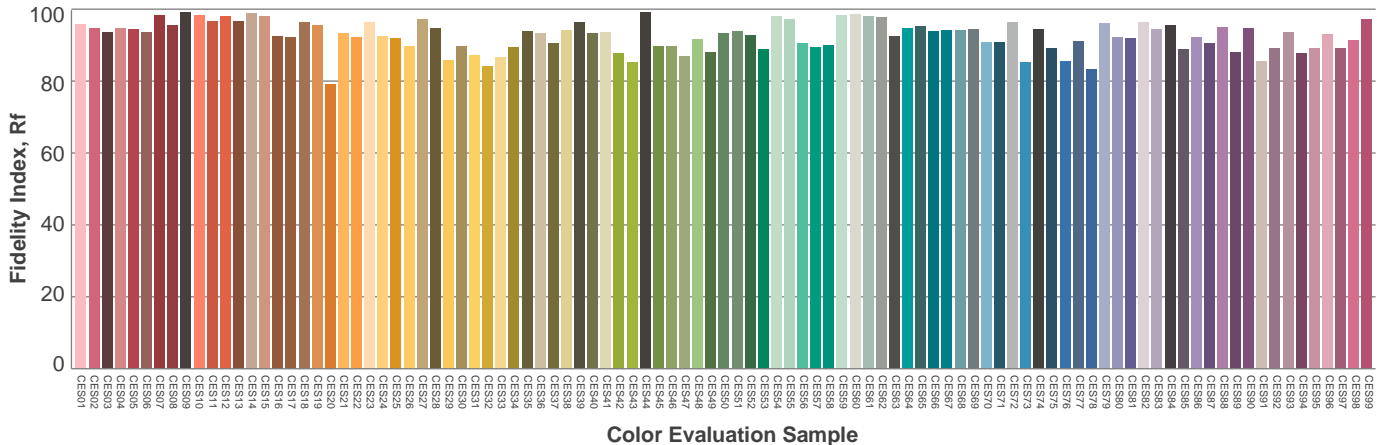
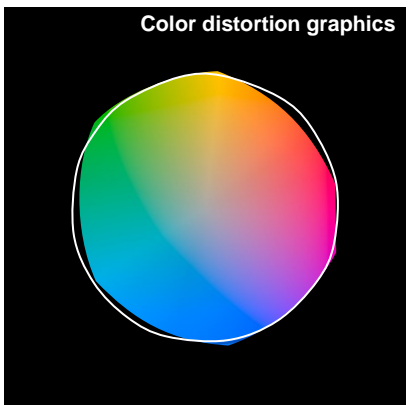
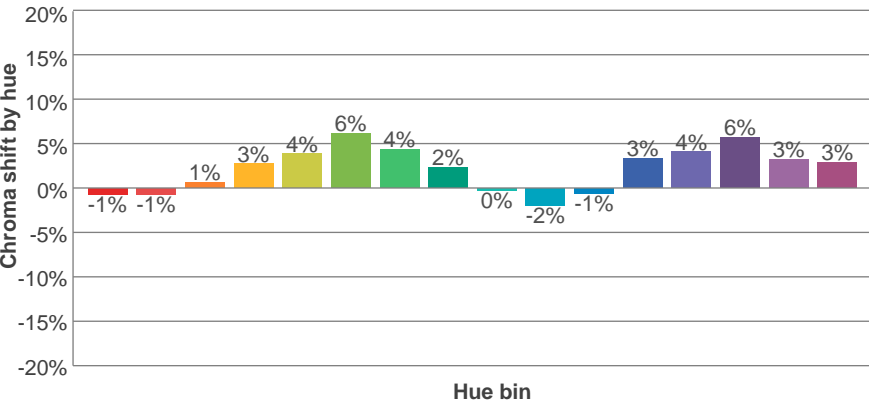
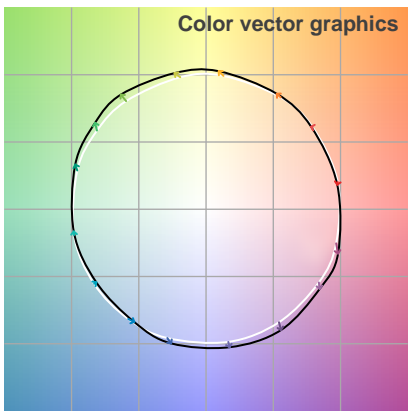
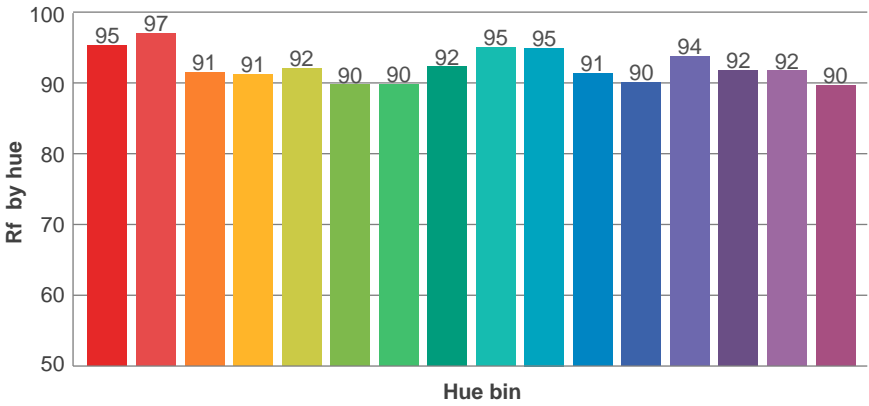
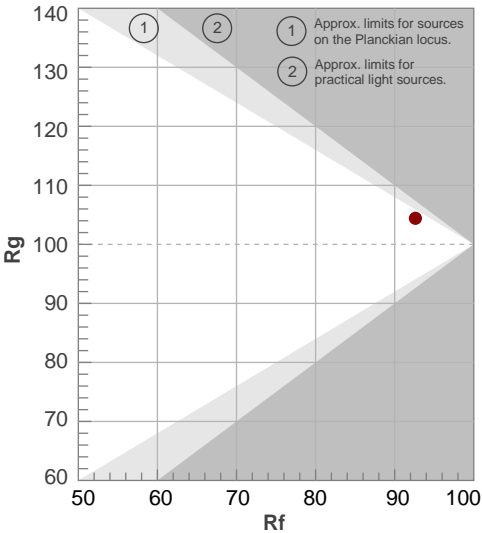
Color temperature	Color rendering index	Red component	Color fidelity	Color gamut	Color quality scale	Color coordinate cie 1931	Color coordinate cie 1931	Color coordinate	Color coordinate	Color diviation from black body
CCT	CRI	CRI R9	TM30 Rf	TM30 Rg	CQS	x	y	u	v	Δuv
3049 K	96.5	92.2	92.6	104.4	93.2	0.431	0.397	0.250	0.345	0.0019

TM30 details

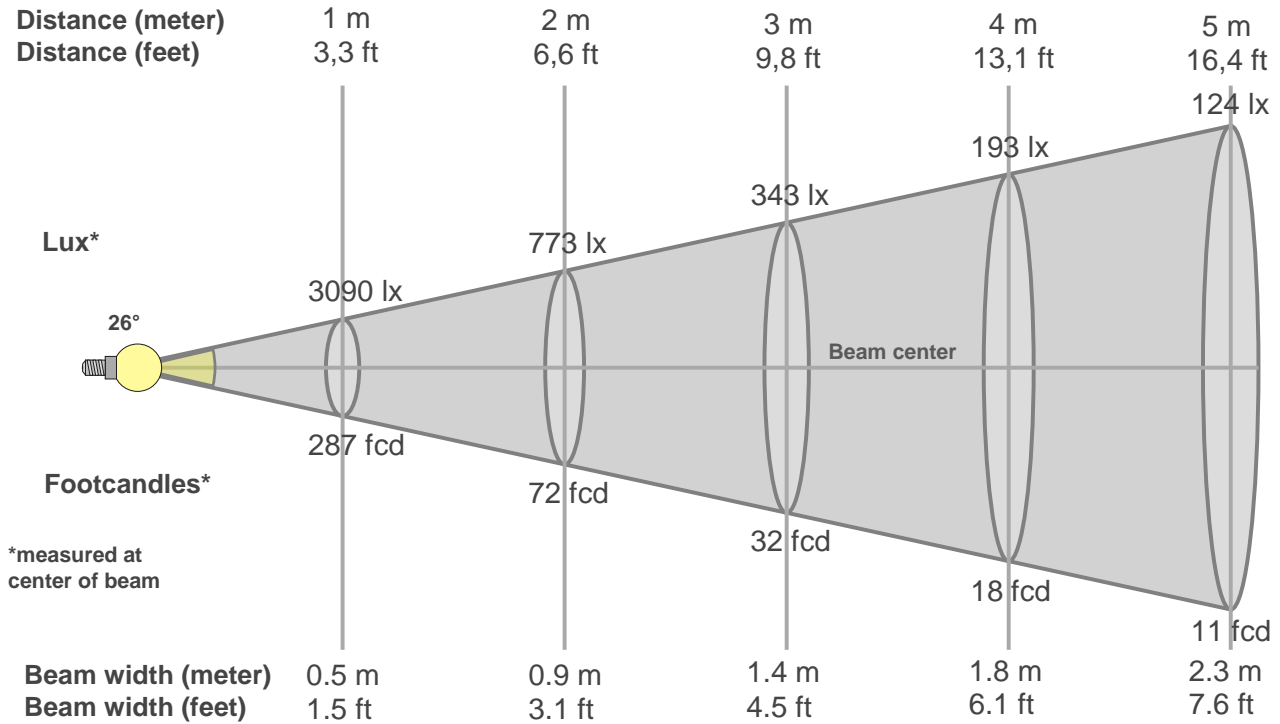
Rf 92.6
Fidelity index Rf

Rg 104.4
Gammut index Rg

Hue Bin	R _f	Graphic shifts (%)	
		Chroma	Hue
1	95	-1%	-2%
2	97	-1%	1%
3	91	1%	4%
4	91	3%	4%
5	92	4%	4%
6	90	6%	1%
7	90	4%	-4%
8	92	2%	-4%
9	95	0%	-3%
10	95	-2%	0%
11	91	-1%	5%
12	90	3%	4%
13	94	4%	0%
14	92	6%	-2%
15	92	3%	-4%
16	90	3%	-7%



Beam details



Beam intensities from 1-20m

1m	2m	3m	4m	5m	6m	7m	8m	9m	10m	11m	12m	13m	14m	15m	16m	17m	18m	19m	20m
3.3ft	6.6ft	9.8ft	13.1ft	16.4ft	19.7ft	23ft	26.2ft	29.5ft	32.8ft	36.1ft	39.4ft	42.7ft	45.9ft	49.2ft	52.5ft	55.8ft	59.1ft	62.3ft	65.6ft
3090lx	773lx	343lx	193lx	124lx	86lx	63lx	48lx	38lx	31lx	26lx	21lx	18lx	16lx	14lx	12lx	11lx	10lx	9lx	8lx
287.1fcd	71.8fcd	31.9fcd	17.9fcd	11.5fcd	8fcd	5.9fcd	4.5fcd	3.5fcd	2.9fcd	2.4fcd	2fcd	1.7fcd	1.5fcd	1.3fcd	1.1fcd	1fcd	0.9fcd	0.8fcd	0.7fcd

Intensities in 0° c-plane

0°	2°	4°	6°	8°	10°	12°	14°	16°	18°	20°	22°	24°	26°	28°	30°	32°	34°	36°	38°
3090	3048	2902	2666	2358	2021	1685	1369	1095	855	661	502	373	264	180	120	82	56	39	27
100%	99%	94%	86%	76%	65%	55%	44%	35%	28%	21%	16%	12%	9%	6%	4%	3%	2%	1%	1%

Intensities in 90° c-plane

0°	2°	4°	6°	8°	10°	12°	14°	16°	18°	20°	22°	24°	26°	28°	30°	32°	34°	36°	38°
3090	3041	2888	2655	2367	2045	1727	1423	1156	924	725	561	424	313	222	152	103	72	52	37
100%	98%	93%	86%	77%	66%	56%	46%	37%	30%	23%	18%	14%	10%	7%	5%	3%	2%	2%	1%

Intensities in 180° c-plane

0°	2°	4°	6°	8°	10°	12°	14°	16°	18°	20°	22°	24°	26°	28°	30°	32°	34°	36°	38°
3090	3010	2839	2587	2292	1979	1670	1387	1129	914	730	578	448	334	240	162	108	72	50	34
100%	97%	92%	84%	74%	64%	54%	45%	37%	30%	24%	19%	15%	11%	8%	5%	3%	2%	2%	1%

Intensities in 270° c-plane

0°	2°	4°	6°	8°	10°	12°	14°	16°	18°	20°	22°	24°	26°	28°	30°	32°	34°	36°	38°
3090	3037	2883	2648	2352	2033	1723	1430	1164	936	747	585	451	339	243	168	114	80	56	39
100%	98%	93%	86%	76%	66%	56%	46%	38%	30%	24%	19%	15%	11%	8%	5%	4%	3%	2%	1%

Beam angle 50%	Field angle 10%	Cutoff angle 2,5%	Intensity ratio in 120° cone	Intensity ratio in 90° cone
26°	52.1°	66.9°	1.0%	1.0%

THIS PAGE INTENSIONALLY LEFT BLANK