

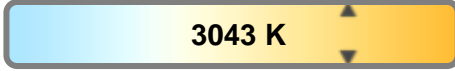
Light efficiency:



Light quality:



Color temperature:

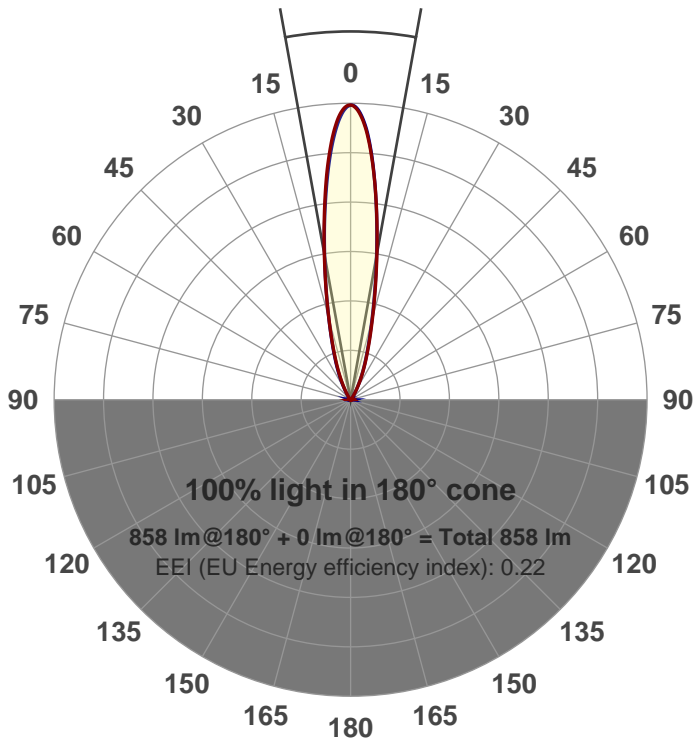


Output: 858 lm
Peak: 4218 cd
Power: 15.0 W
PF: 0.98



Beam angle

20.4°



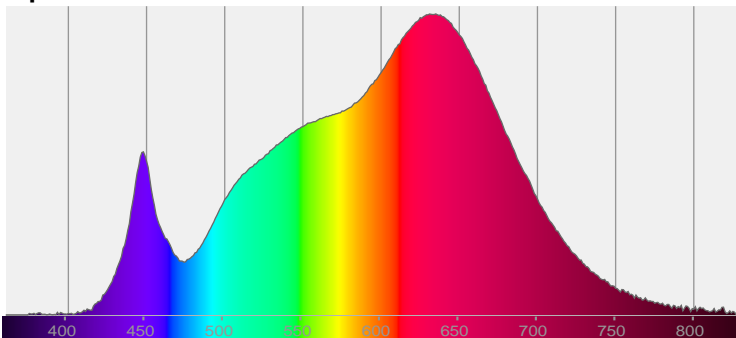
Product name:
GR-AD-SP-RD-91A
Item number:
GR-AD-SP-RD-91A
Date and time:
8/9/2017 4:55:46 PM
Description:

LUM: 858
PPF: 16.2

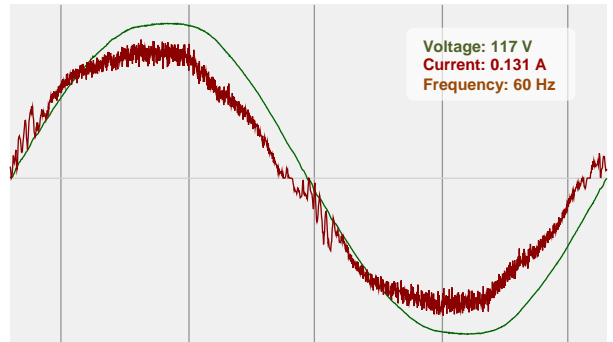


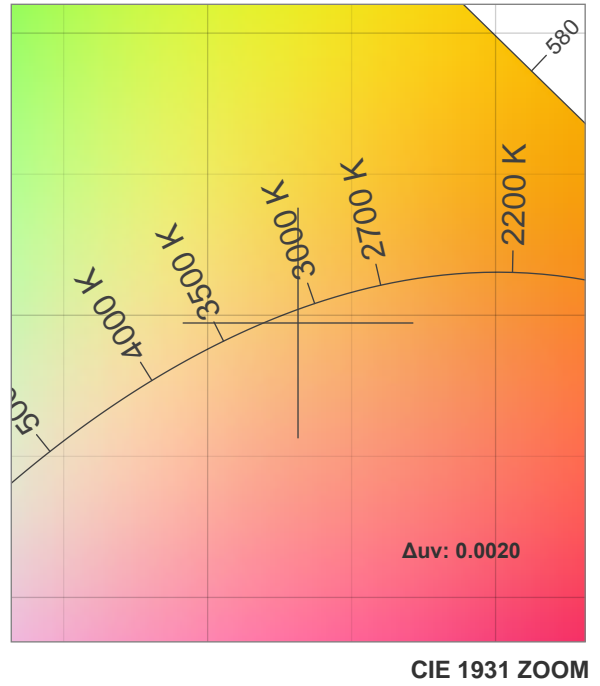
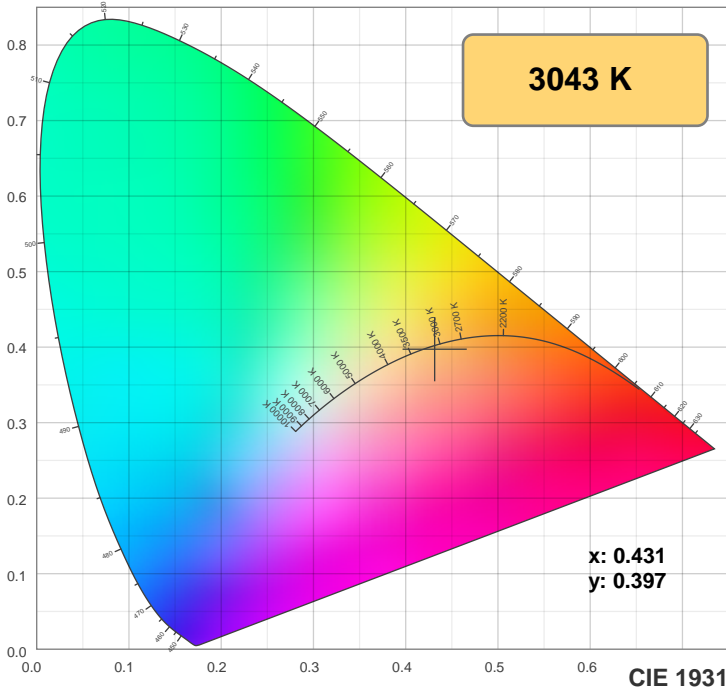
CIE 1931
x: 0.431
y: 0.397

Spectra

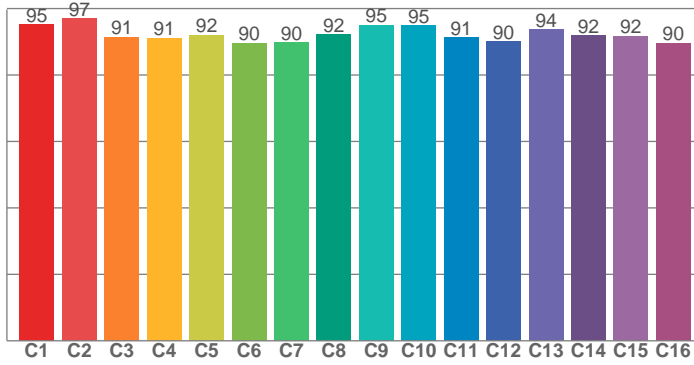


Power

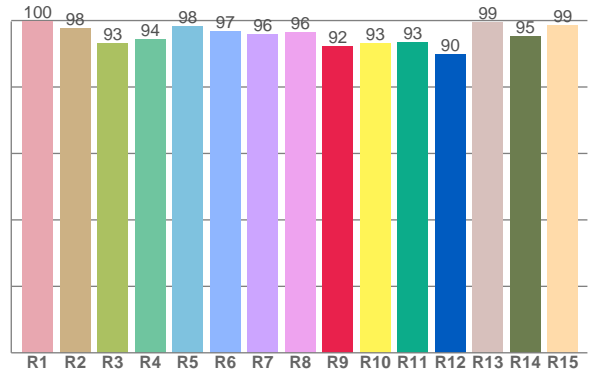




TM30: 92.6



CRI: 96.5 (R1-R8)



CRI R values, only R1-R8 are used to calculate final CRI value

R1	R2	R3	R4	R5	R6	R7	R8	R9	R10	R11	R12	R13	R14	R15
99.8	97.7	93.0	94.5	98.3	96.6	95.8	96.5	92.2	93.1	93.3	89.7	99.3	95.1	98.6

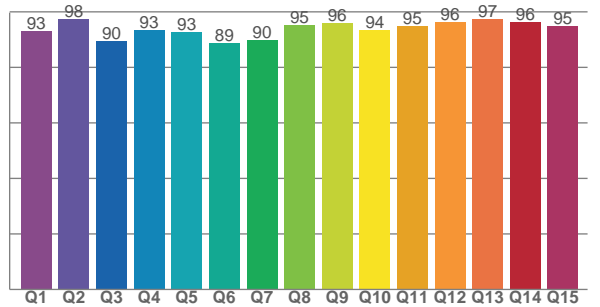
TM30 C values, 16 binned values out of total of 99 C values

C1	C2	C3	C4	C5	C6	C7	C8	C9	C10	C11	C12	C13	C14	C15	C16
95.3	97.0	91.4	91.2	92.1	89.7	89.8	92.2	95.0	94.9	91.3	90.1	93.7	91.8	91.7	89.7

CQS Q values

Q1	Q2	Q3	Q4	Q5	Q6	Q7	Q8	Q9	Q10	Q11	Q12	Q13	Q14	Q15
93.0	97.5	89.7	93.4	92.9	88.7	89.8	95.3	96.1	93.6	95.0	96.3	97.4	96.2	94.8

CQS: 93.2



Color parameters

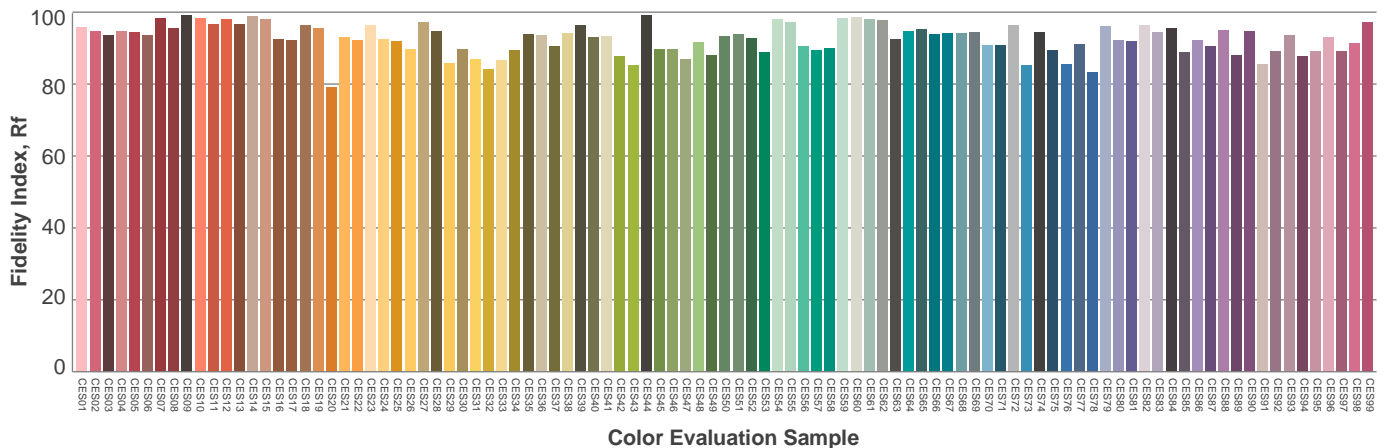
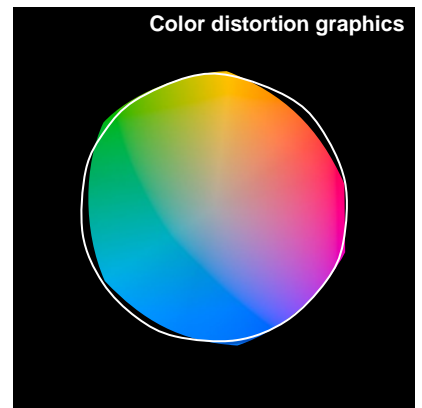
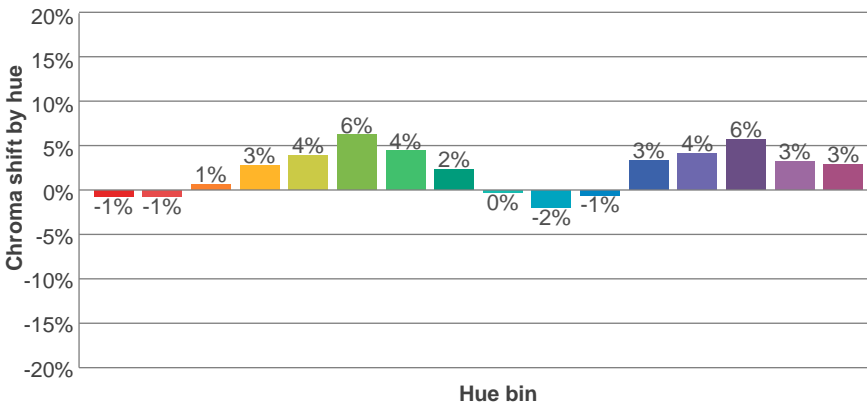
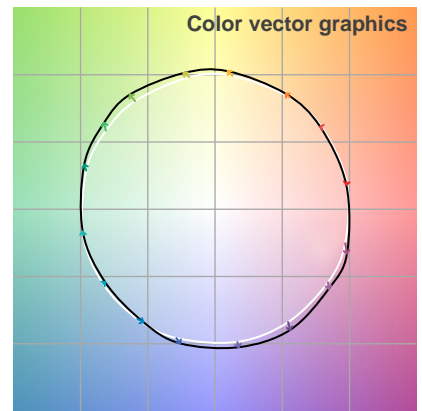
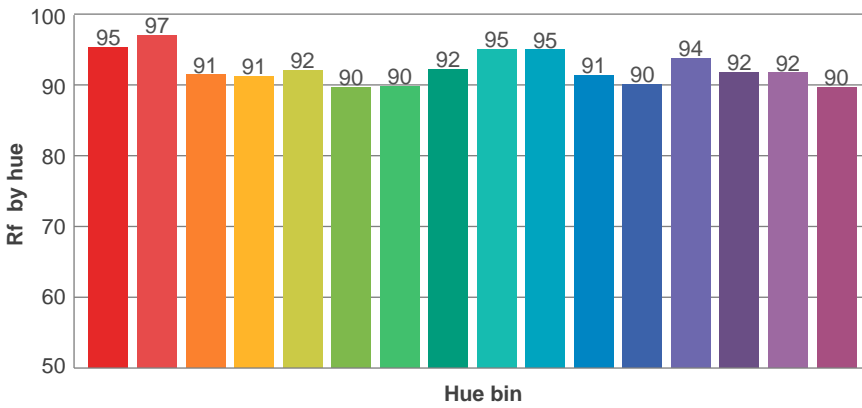
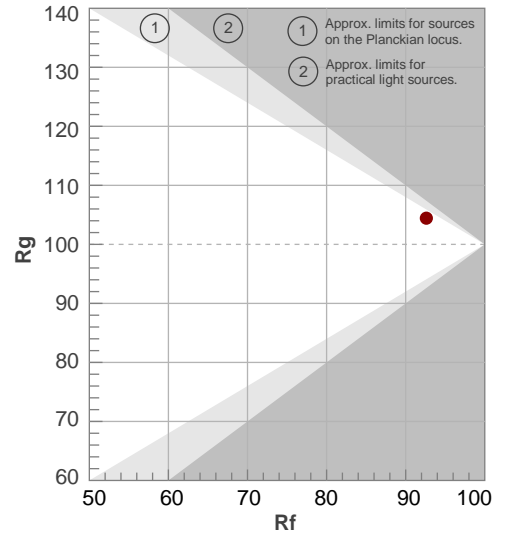
Color temperature	Color rendering index	Red component	Color fidelity	Color gamut	Color quality scale	Color coordinate cie 1931	Color coordinate cie 1931	Color coordinate	Color coordinate	Color diviation from black body
CCT	CRI	CRI R9	TM30 Rf	TM30 Rg	CQS	x	y	u	v	Δuv
3043 K	96.5	92.2	92.6	104.4	93.2	0.431	0.397	0.250	0.345	0.0020

TM30 details

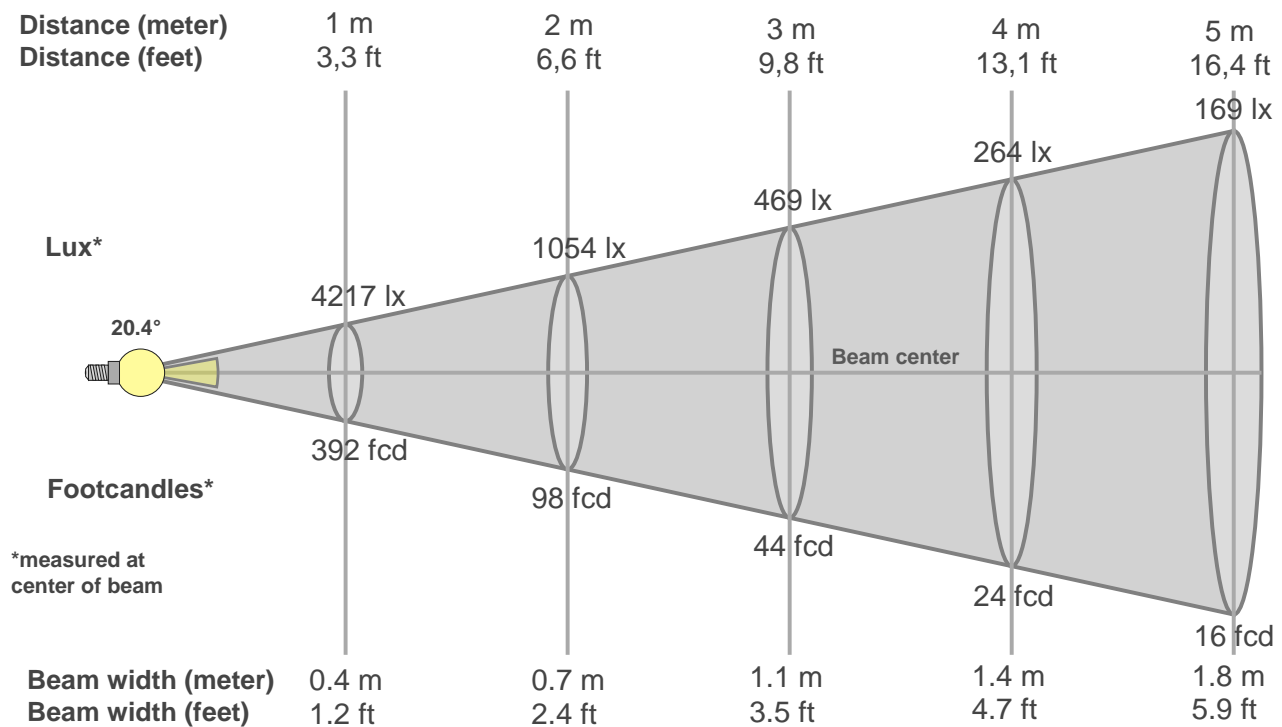
Rf 92.6
Fidelity index Rf

Rg 104.4
Gammut index Rg

Hue Bin	R _f	Graphic shifts (%)	
		Chroma	Hue
1	95	-1%	-2%
2	97	-1%	1%
3	91	1%	4%
4	91	3%	4%
5	92	4%	4%
6	90	6%	1%
7	90	4%	-4%
8	92	2%	-4%
9	95	0%	-3%
10	95	-2%	0%
11	91	-1%	5%
12	90	3%	3%
13	94	4%	0%
14	92	6%	-2%
15	92	3%	-4%
16	90	3%	-7%



Beam details



Beam intensities from 1-20m

1m	2m	3m	4m	5m	6m	7m	8m	9m	10m	11m	12m	13m	14m	15m	16m	17m	18m	19m	20m
3.3ft	6.6ft	9.8ft	13.1ft	16.4ft	19.7ft	23ft	26.2ft	29.5ft	32.8ft	36.1ft	39.4ft	42.7ft	45.9ft	49.2ft	52.5ft	55.8ft	59.1ft	62.3ft	65.6ft
4217lx	1054lx	469lx	264lx	169lx	117lx	86lx	66lx	52lx	42lx	35lx	29lx	25lx	22lx	19lx	16lx	15lx	13lx	12lx	11lx
391.8fcd	97.9fcd	43.5fcd	24.5fcd	15.7fcd	10.9fcd	8fcd	6.1fcd	4.8fcd	3.9fcd	3.2fcd	2.7fcd	2.3fcd	2fcd	1.7fcd	1.5fcd	1.4fcd	1.2fcd	1.1fcd	1fcd

Intensities in 0° c-plane

0°	2°	4°	6°	8°	10°	12°	14°	16°	18°	20°	22°	24°	26°	28°	30°	32°	34°	36°	38°
4217	4105	3757	3258	2696	2177	1727	1359	1063	831	653	508	389	290	209	147	104	74	54	40
100%	97%	89%	77%	64%	52%	41%	32%	25%	20%	15%	12%	9%	7%	5%	3%	2%	2%	1%	1%

Intensities in 90° c-plane

0°	2°	4°	6°	8°	10°	12°	14°	16°	18°	20°	22°	24°	26°	28°	30°	32°	34°	36°	38°
4217	4061	3691	3192	2659	2148	1713	1351	1069	851	680	541	420	318	231	162	110	77	54	40
100%	96%	88%	76%	63%	51%	41%	32%	25%	20%	16%	13%	10%	8%	5%	4%	3%	2%	1%	1%

Intensities in 180° c-plane

0°	2°	4°	6°	8°	10°	12°	14°	16°	18°	20°	22°	24°	26°	28°	30°	32°	34°	36°	38°
4217	4075	3717	3221	2684	2175	1732	1368	1078	856	680	539	423	319	235	165	116	82	58	42
100%	97%	88%	76%	64%	52%	41%	32%	26%	20%	16%	13%	10%	8%	6%	4%	3%	2%	1%	1%

Intensities in 270° c-plane

0°	2°	4°	6°	8°	10°	12°	14°	16°	18°	20°	22°	24°	26°	28°	30°	32°	34°	36°	38°
4217	4095	3741	3225	2671	2149	1699	1331	1042	823	651	515	399	298	216	150	102	71	51	36
100%	97%	89%	76%	63%	51%	40%	32%	25%	20%	15%	12%	9%	7%	5%	4%	2%	2%	1%	1%

Beam angle 50%	Field angle 10%	Cutoff angle 2,5%	Intensity ratio in 120° cone	Intensity ratio in 90° cone
20.4°	47.5°	64.3°	1.0%	1.0%

THIS PAGE INTENSIONALLY LEFT BLANK