

Light efficiency:



Light quality:



Color temperature:

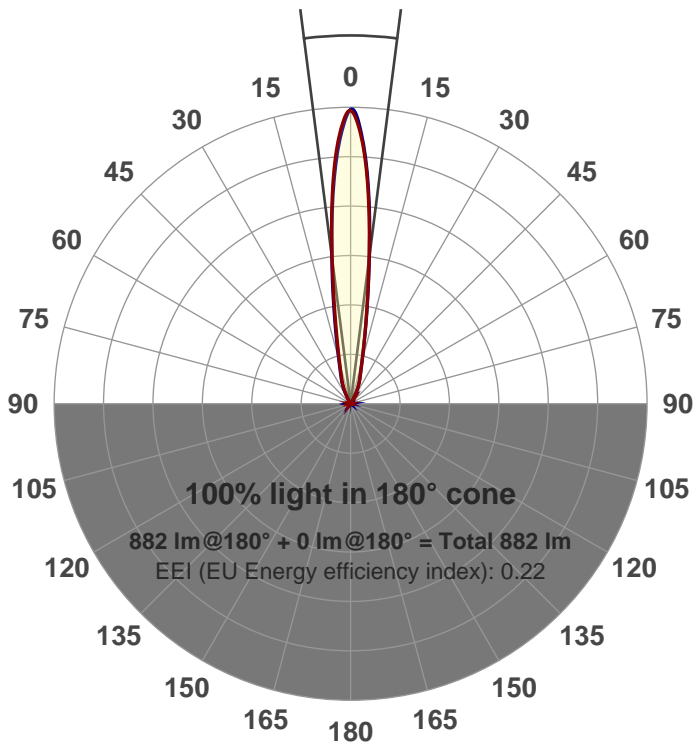


Output: 882 lm
Peak: 7188 cd
Power: 15.0 W
PF: 0.98



Beam angle

14.5°



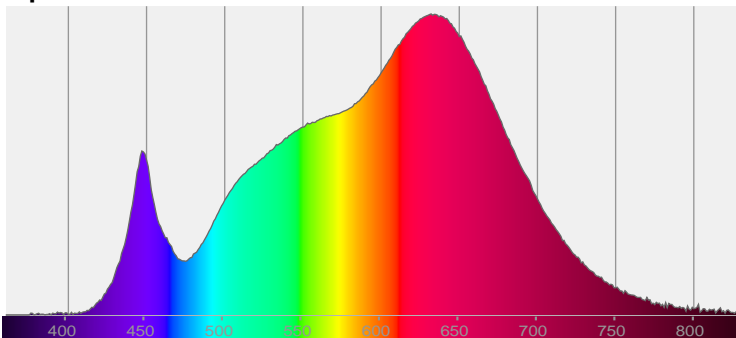
Product name:
GR-AD-SP-RD
Item number:
GR-AD-SP-RD
Date and time:
8/9/2017 5:03:38 PM
Description:

LUM: 882
PPF: 16.8

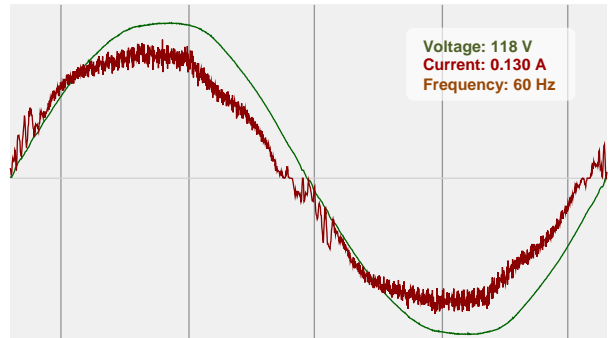


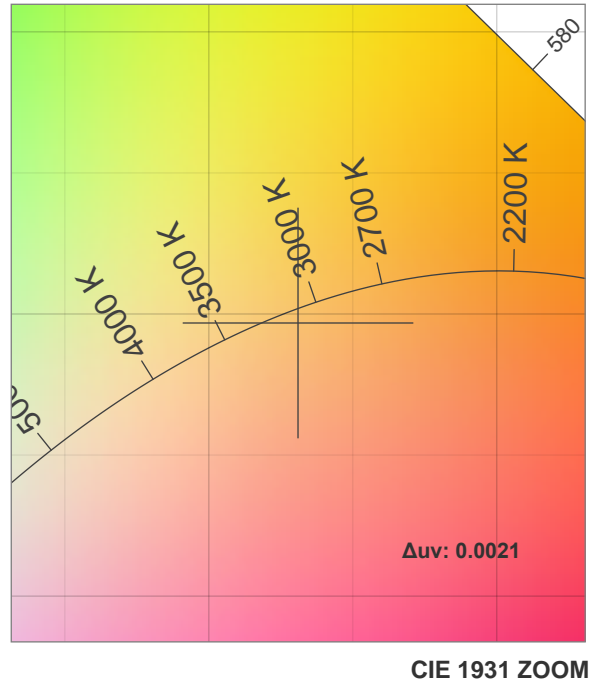
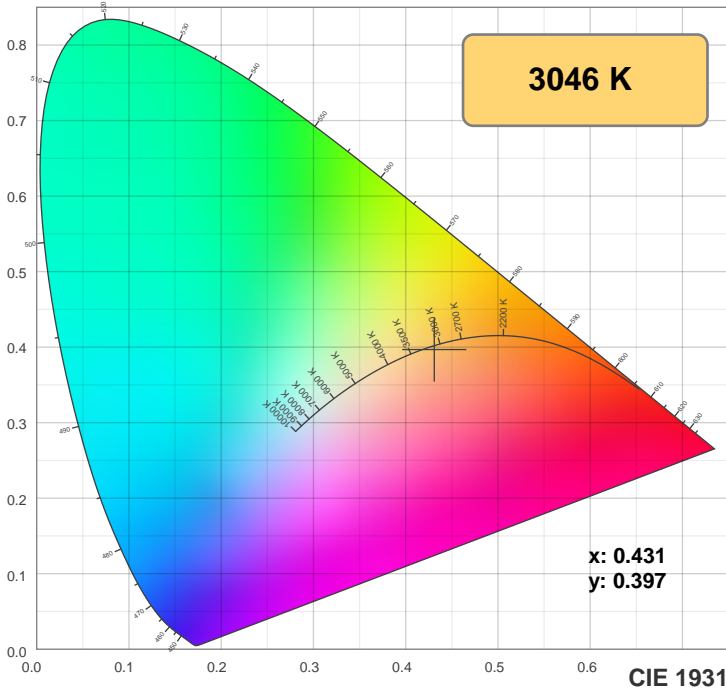
CIE 1931
x: 0.431
y: 0.397

Spectra

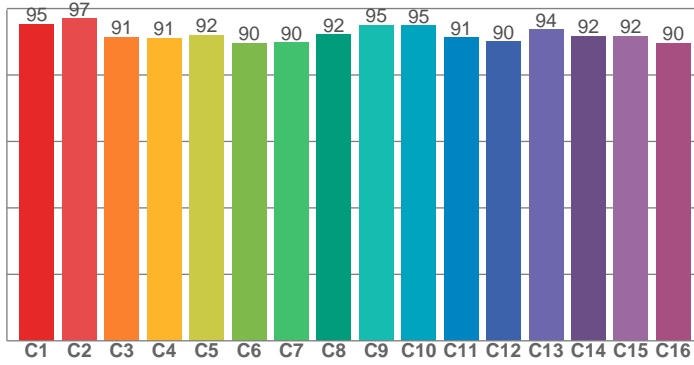


Power

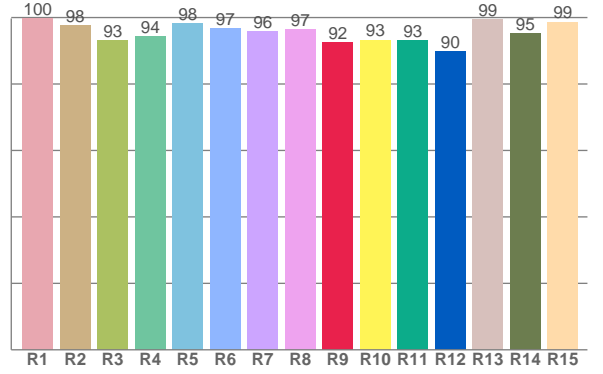




TM30: 92.6



CRI: 96.6 (R1-R8)



CRI R values, only R1-R8 are used to calculate final CRI value

R1	R2	R3	R4	R5	R6	R7	R8	R9	R10	R11	R12	R13	R14	R15
99.8	97.7	93.1	94.4	98.4	96.7	95.8	96.5	92.5	93.3	93.3	89.9	99.4	95.2	98.7

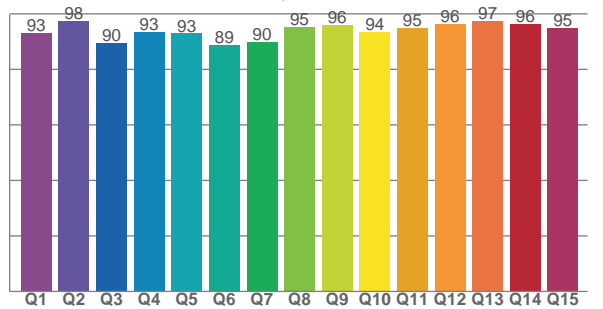
TM30 C values, 16 binned values out of total of 99 C values

C1	C2	C3	C4	C5	C6	C7	C8	C9	C10	C11	C12	C13	C14	C15	C16
95.3	97.0	91.4	91.2	92.0	89.6	89.8	92.2	95.0	95.0	91.3	90.1	93.7	91.8	91.7	89.6

CQS Q values

Q1	Q2	Q3	Q4	Q5	Q6	Q7	Q8	Q9	Q10	Q11	Q12	Q13	Q14	Q15
93.0	97.5	89.6	93.4	92.9	88.7	89.7	95.2	96.1	93.6	95.0	96.2	97.3	96.3	94.9

CQS: 93.2



Color parameters

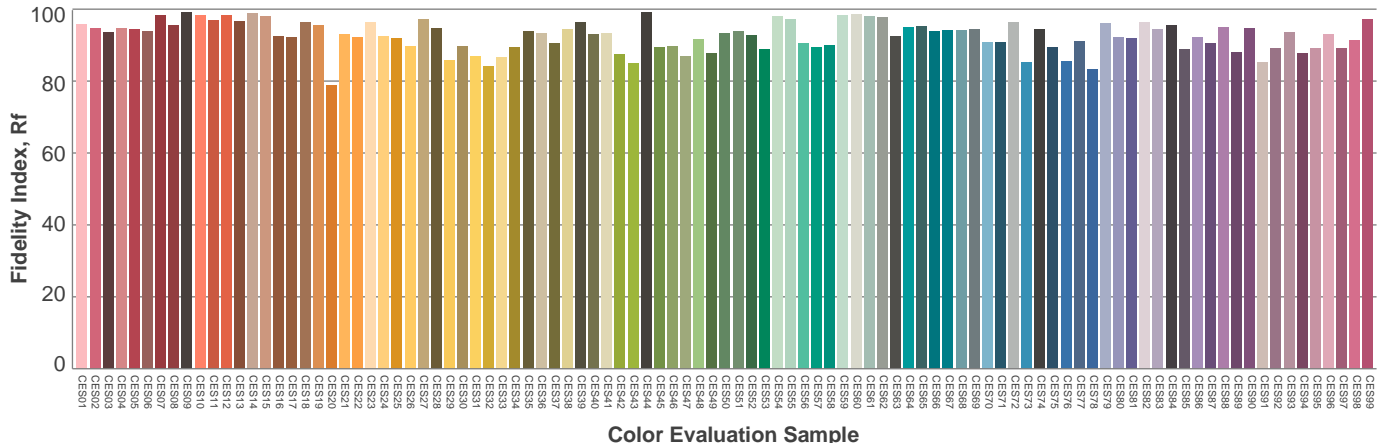
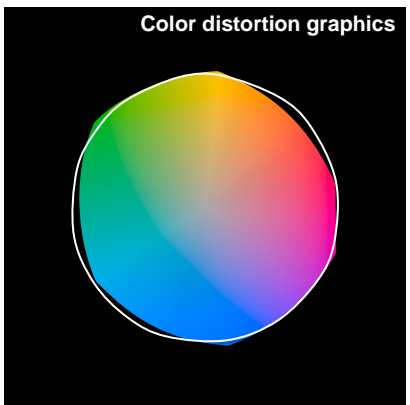
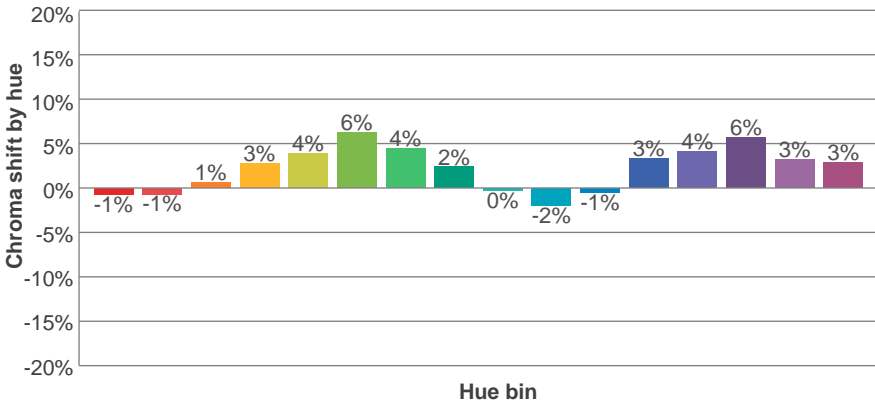
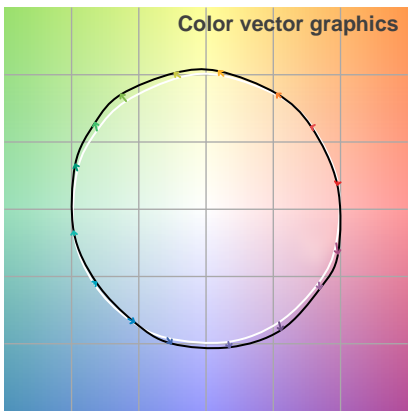
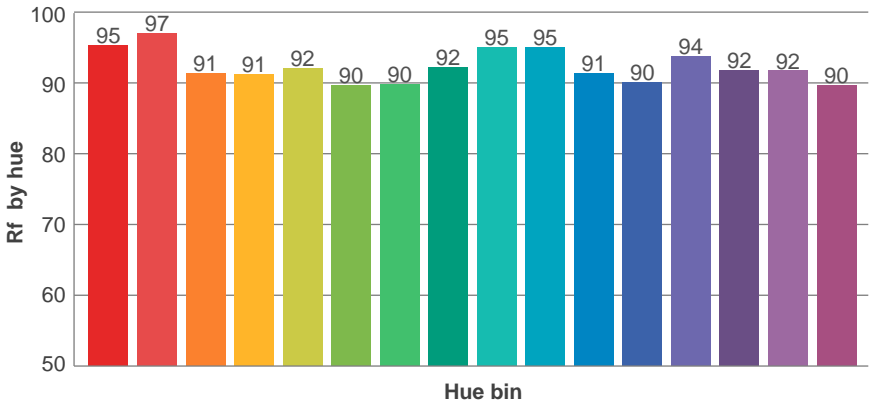
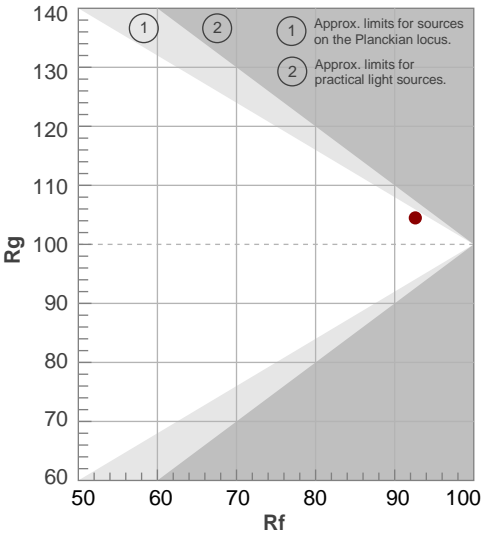
Color temperature	Color rendering index	Red component	Color fidelity	Color gamut	Color quality scale	Color coordinate cie 1931	Color coordinate cie 1931	Color coordinate	Color coordinate	Color deviation from black body
CCT	CRI	CRI R9	TM30 Rf	TM30 Rg	CQS	x	y	u	v	Δuv
3046 K	96.6	92.5	92.6	104.5	93.2	0.431	0.397	0.250	0.345	0.0021

TM30 details

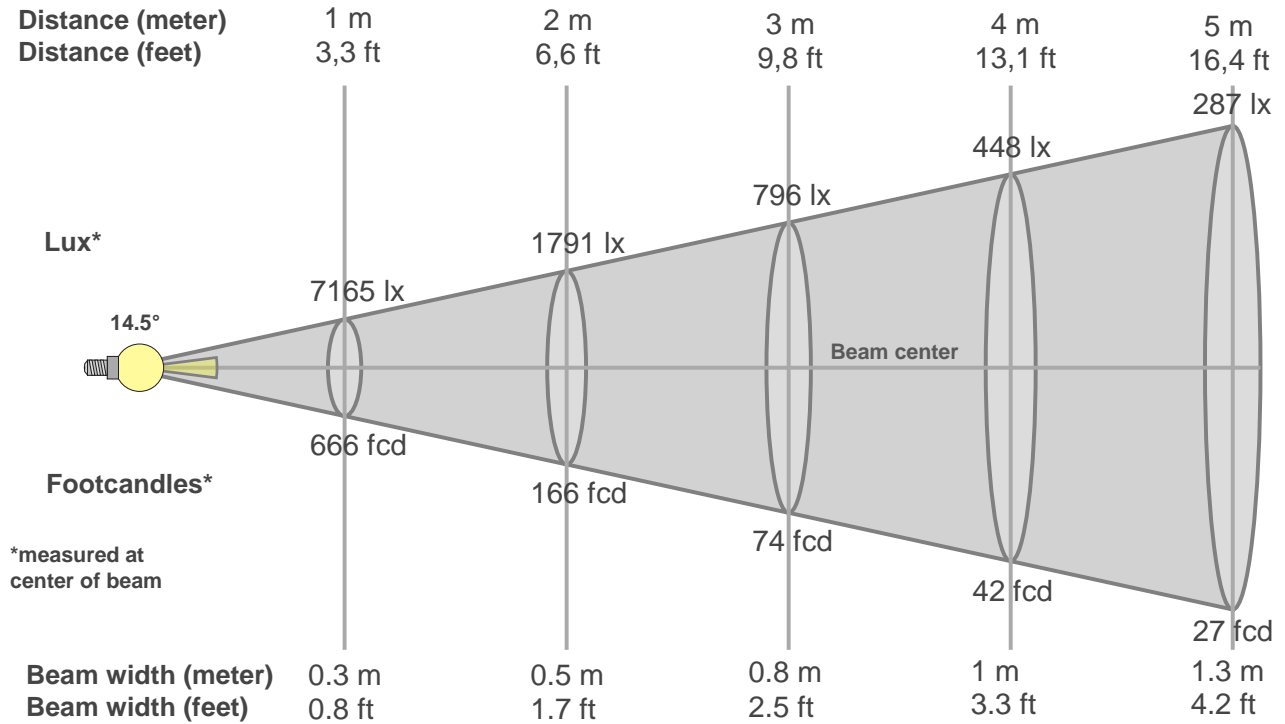
Rf 92.6
Fidelity index Rf

Rg 104.5
Gammut index Rg

Hue Bin	R _f	Graphic shifts (%)	
		Chroma	Hue
1	95	-1%	-2%
2	97	-1%	1%
3	91	1%	4%
4	91	3%	4%
5	92	4%	4%
6	90	6%	1%
7	90	4%	-4%
8	92	2%	-4%
9	95	0%	-3%
10	95	-2%	0%
11	91	-1%	5%
12	90	3%	3%
13	94	4%	0%
14	92	6%	-2%
15	92	3%	-4%
16	90	3%	-7%



Beam details



Beam intensities from 1-20m

1m	2m	3m	4m	5m	6m	7m	8m	9m	10m	11m	12m	13m	14m	15m	16m	17m	18m	19m	20m
3.3ft	6.6ft	9.8ft	13.1ft	16.4ft	19.7ft	23ft	26.2ft	29.5ft	32.8ft	36.1ft	39.4ft	42.7ft	45.9ft	49.2ft	52.5ft	55.8ft	59.1ft	62.3ft	65.6ft
7165lx	1791lx	796lx	448lx	287lx	199lx	146lx	112lx	88lx	72lx	59lx	50lx	42lx	37lx	32lx	28lx	25lx	22lx	20lx	18lx
665.6fc	166.4fc	74fcd	41.6fcd	26.6fcd	18.5fcd	13.6fcd	10.4fcd	8.2fcd	6.7fcd	5.5fcd	4.6fcd	3.9fcd	3.4fcd	3fcd	2.6fcd	2.3fcd	2.1fcd	1.8fcd	1.7fcd

Intensities in 0° c-plane

0°	1°	2°	3°	4°	5°	6°	7°	8°	9°	10°	11°	12°	13°	14°	15°	16°	17°	18°	19°
7165	7034	6713	6282	5748	5113	4425	3738	3118	2605	2189	1841	1569	1353	1178	1035	921	829	750	685
100%	98%	94%	88%	80%	71%	62%	52%	44%	36%	31%	26%	22%	19%	16%	14%	13%	12%	10%	10%

Intensities in 90° c-plane

0°	1°	2°	3°	4°	5°	6°	7°	8°	9°	10°	11°	12°	13°	14°	15°	16°	17°	18°	19°
7165	6957	6583	6136	5598	4998	4370	3760	3222	2747	2323	1981	1697	1451	1258	1107	981	880	800	730
100%	97%	92%	86%	78%	70%	61%	52%	45%	38%	32%	28%	24%	20%	18%	15%	14%	12%	11%	10%

Intensities in 180° c-plane

0°	1°	2°	3°	4°	5°	6°	7°	8°	9°	10°	11°	12°	13°	14°	15°	16°	17°	18°	19°
7165	6976	6631	6180	5630	5008	4360	3724	3149	2661	2256	1914	1636	1418	1234	1088	971	874	795	726
100%	97%	93%	86%	79%	70%	61%	52%	44%	37%	31%	27%	23%	20%	17%	15%	14%	12%	11%	10%

Intensities in 270° c-plane

0°	1°	2°	3°	4°	5°	6°	7°	8°	9°	10°	11°	12°	13°	14°	15°	16°	17°	18°	19°
7165	7086	6718	6252	5709	5089	4436	3777	3189	2694	2271	1926	1640	1400	1217	1068	946	850	777	705
100%	99%	94%	87%	80%	71%	62%	53%	45%	38%	32%	27%	23%	20%	17%	15%	13%	12%	11%	10%

Beam angle 50%	Field angle 10%	Cutoff angle 2,5%	Intensity ratio in 120° cone	Intensity ratio in 90° cone
14.5°	37.8°	55.7°	1.0%	1.0%

THIS PAGE INTENSIONALLY LEFT BLANK