

Light efficiency:



Light quality:



Color temperature:

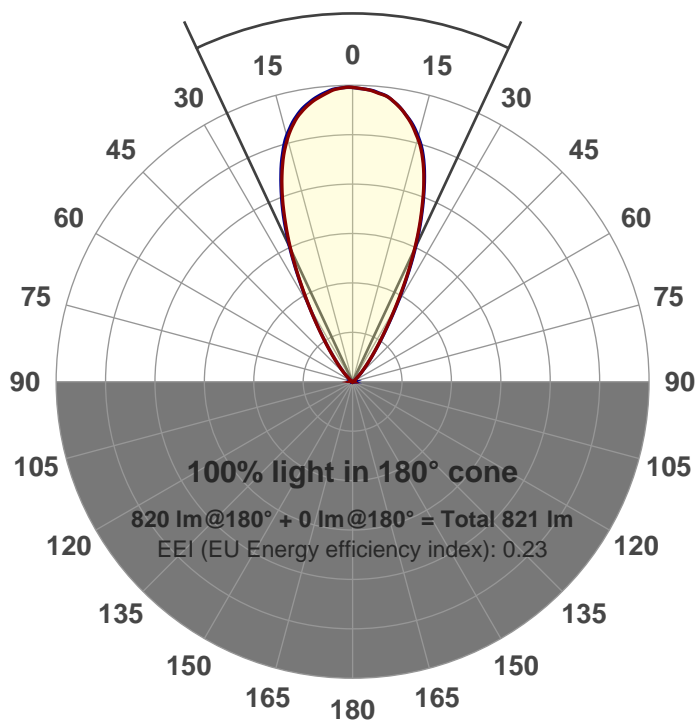


Output: 820 lm
Peak: 1183 cd
Power: 15.0 W
PF: 0.98



Beam angle

50.1°



Product name:
GR-AD-WF-RD-91A
 Item number:
GR-AD-WF-RD-91A
 Date and time:
8/9/2017 4:51:20 PM
 Description:

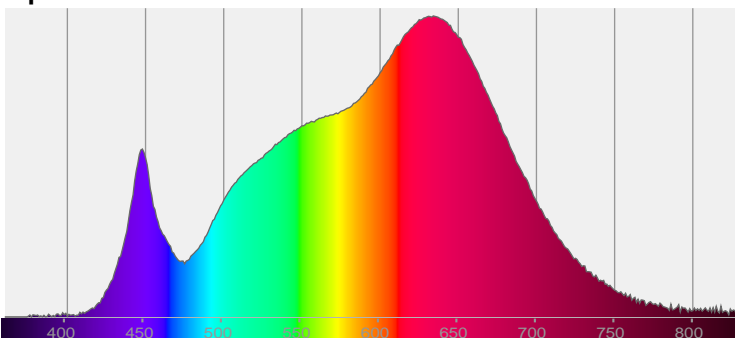
LUM: 820

PPF: 15.4

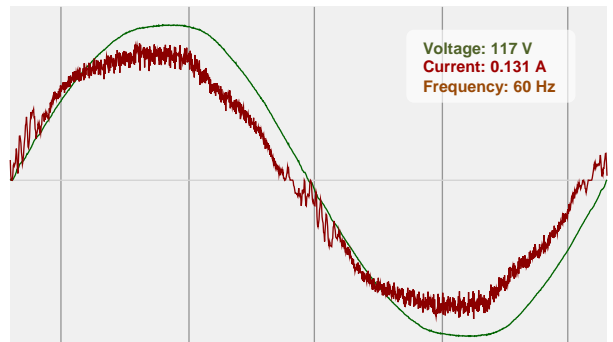


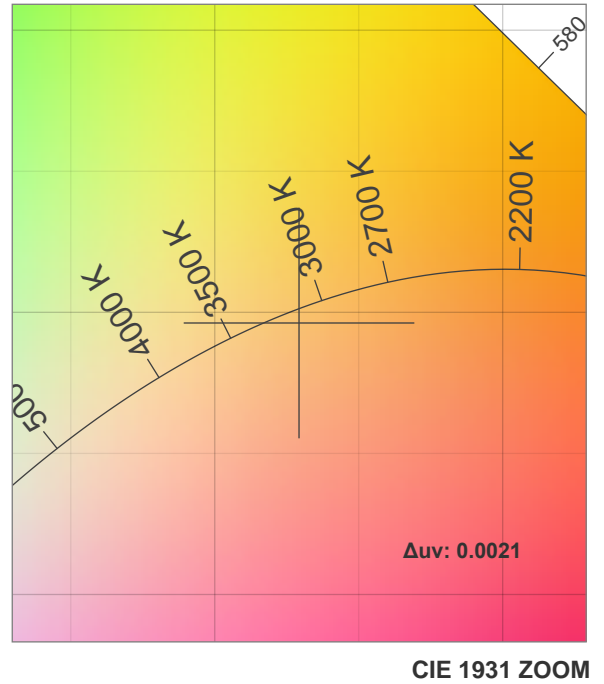
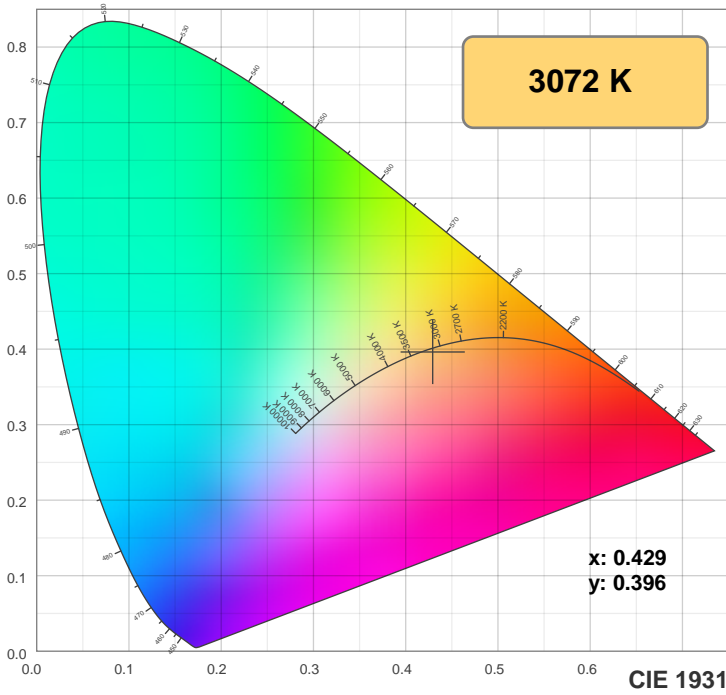
CIE 1931
 x: 0.429
 y: 0.396

Spectra

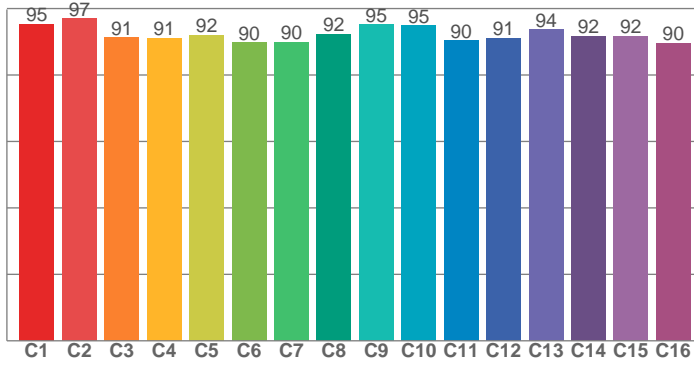


Power

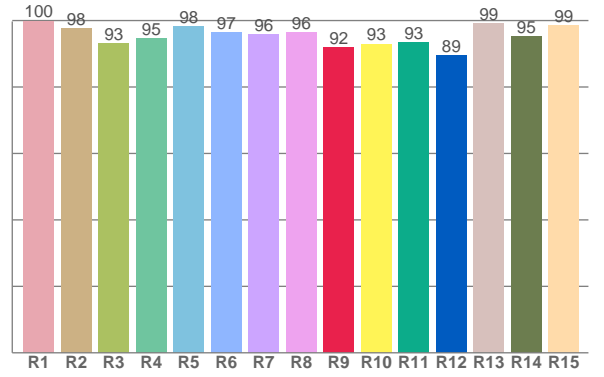




TM30: 92.6



CRI: 96.5 (R1-R8)



CRI R values, only R1-R8 are used to calculate final CRI value

R1	R2	R3	R4	R5	R6	R7	R8	R9	R10	R11	R12	R13	R14	R15
99.9	97.6	93.0	94.5	98.3	96.5	95.8	96.4	92.0	93.0	93.4	89.4	99.3	95.2	98.6

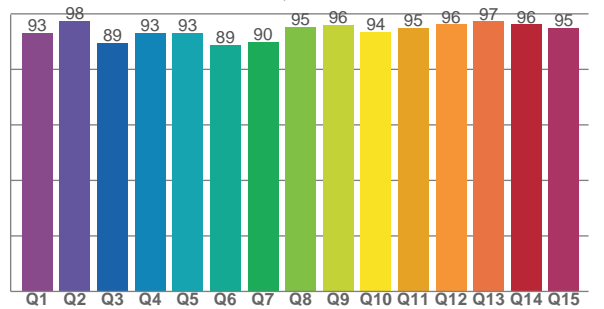
TM30 C values, 16 binned values out of total of 99 C values

C1	C2	C3	C4	C5	C6	C7	C8	C9	C10	C11	C12	C13	C14	C15	C16
95.3	97.0	91.3	91.1	92.1	89.7	89.9	92.4	95.1	95.0	90.4	91.1	93.7	91.7	91.7	89.6

CQS Q values

Q1	Q2	Q3	Q4	Q5	Q6	Q7	Q8	Q9	Q10	Q11	Q12	Q13	Q14	Q15
93.1	97.5	89.4	93.2	93.0	88.8	89.8	95.3	96.1	93.5	94.8	96.2	97.3	96.2	94.8

CQS: 93.2



Color parameters

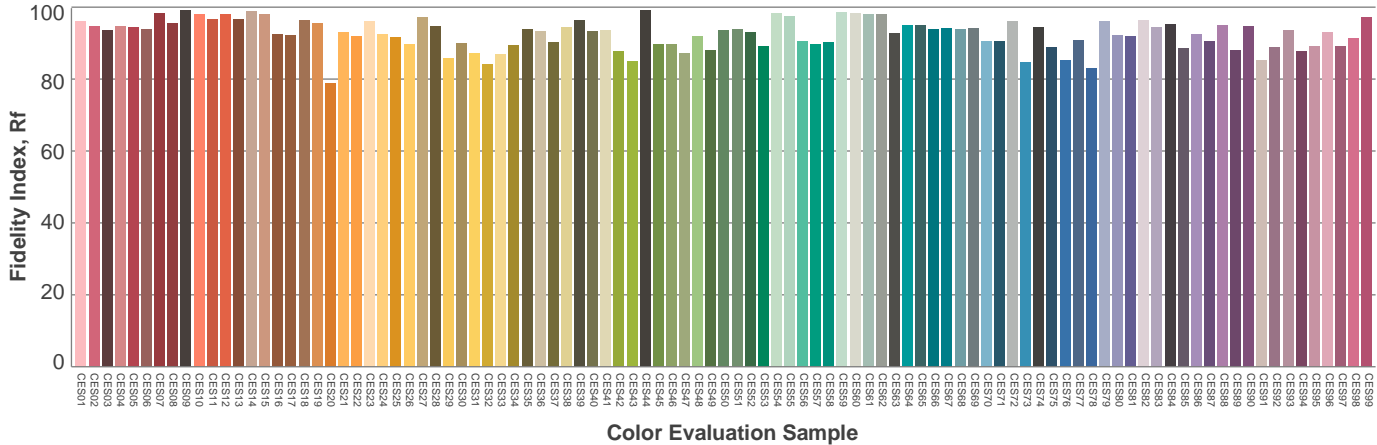
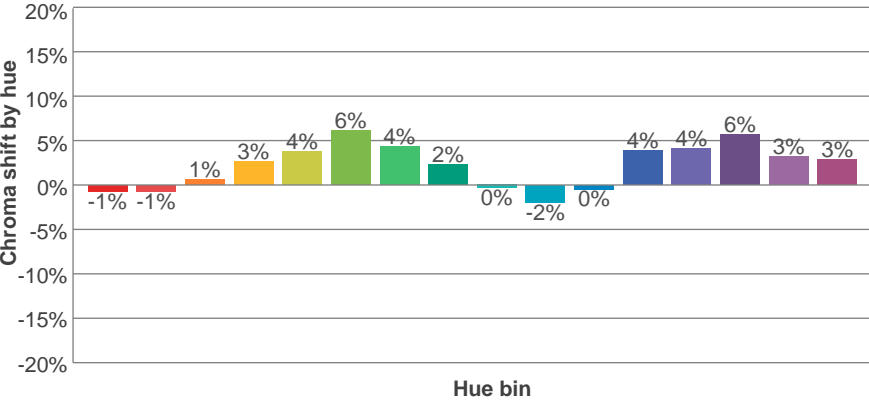
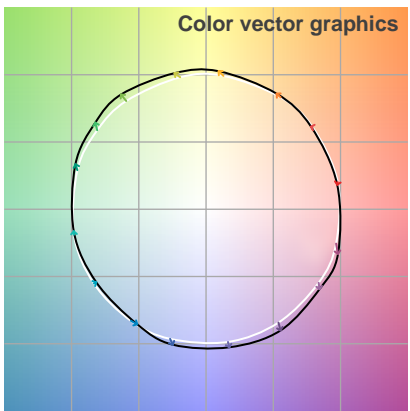
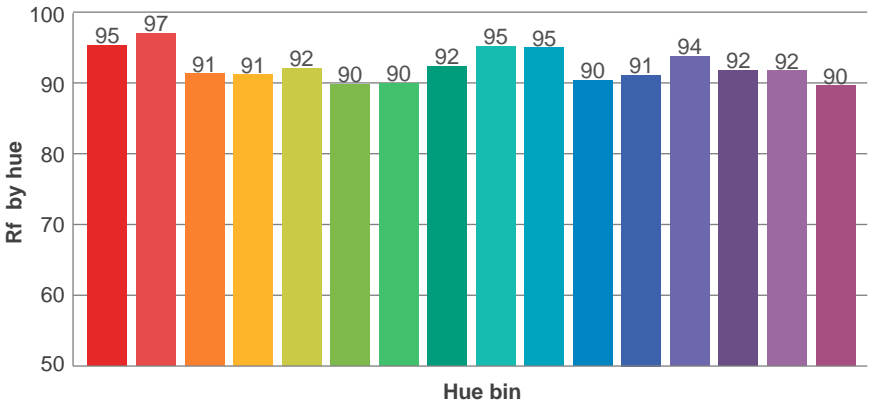
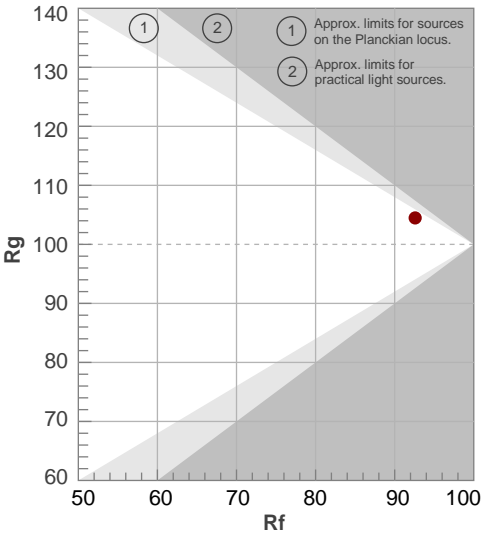
Color temperature	Color rendering index	Red component	Color fidelity	Color gamut	Color quality scale	Color coordinate cie 1931	Color coordinate cie 1931	Color coordinate	Color coordinate	Color deviation from black body
CCT	CRI	CRI R9	TM30 Rf	TM30 Rg	CQS	x	y	u	v	Δuv
3072 K	96.5	92.0	92.6	104.5	93.2	0.429	0.396	0.249	0.345	0.0021

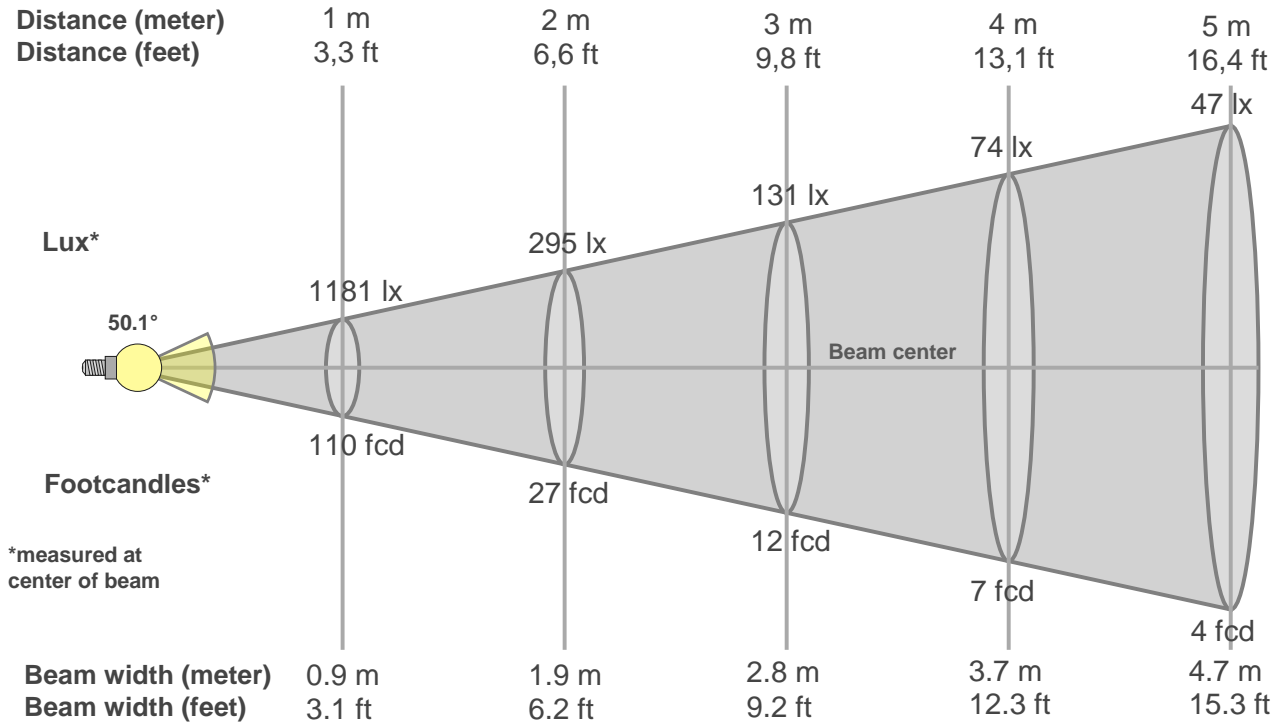
TM30 details

Rf 92.6
Fidelity index Rf

Rg 104.5
Gammut index Rg

Hue Bin	R _f	Graphic shifts (%)	
		Chroma	Hue
1	95	-1%	-2%
2	97	-1%	1%
3	91	1%	4%
4	91	3%	4%
5	92	4%	4%
6	90	6%	1%
7	90	4%	-4%
8	92	2%	-4%
9	95	0%	-2%
10	95	-2%	0%
11	90	0%	5%
12	91	4%	3%
13	94	4%	0%
14	92	6%	-2%
15	92	3%	-4%
16	90	3%	-7%





Beam intensities from 1-20m

1m	2m	3m	4m	5m	6m	7m	8m	9m	10m	11m	12m	13m	14m	15m	16m	17m	18m	19m	20m
3.3ft	6.6ft	9.8ft	13.1ft	16.4ft	19.7ft	23ft	26.2ft	29.5ft	32.8ft	36.1ft	39.4ft	42.7ft	45.9ft	49.2ft	52.5ft	55.8ft	59.1ft	62.3ft	65.6ft
1181lx	295lx	131lx	74lx	47lx	33lx	24lx	18lx	15lx	12lx	10lx	8lx	7lx	6lx	5lx	5lx	4lx	4lx	3lx	3lx
109.7fc	27.4fcd	12.2fcd	6.9fcd	4.4fcd	3fcd	2.2fcd	1.7fcd	1.4fcd	1.1fcd	0.9fcd	0.8fcd	0.6fcd	0.6fcd	0.5fcd	0.4fcd	0.4fcd	0.3fcd	0.3fcd	0.3fcd

Intensities in 0° c-plane

0°	2°	4°	6°	8°	10°	12°	14°	16°	18°	20°	22°	24°	26°	28°	30°	32°	34°	36°	38°
1181	1180	1172	1156	1138	1113	1081	1037	980	911	829	738	640	537	437	348	272	209	160	121
100%	100%	99%	98%	96%	94%	92%	88%	83%	77%	70%	62%	54%	45%	37%	29%	23%	18%	14%	10%

Intensities in 90° c-plane

0°	2°	4°	6°	8°	10°	12°	14°	16°	18°	20°	22°	24°	26°	28°	30°	32°	34°	36°	38°
1181	1181	1176	1162	1144	1121	1089	1047	995	924	841	751	652	547	442	347	267	204	153	113
100%	100%	100%	98%	97%	95%	92%	89%	84%	78%	71%	64%	55%	46%	37%	29%	23%	17%	13%	10%

Intensities in 180° c-plane

0°	2°	4°	6°	8°	10°	12°	14°	16°	18°	20°	22°	24°	26°	28°	30°	32°	34°	36°	38°
1181	1177	1169	1159	1142	1114	1079	1035	984	917	835	740	641	538	436	342	263	201	152	115
100%	100%	99%	98%	97%	94%	91%	88%	83%	78%	71%	63%	54%	46%	37%	29%	22%	17%	13%	10%

Intensities in 270° c-plane

0°	2°	4°	6°	8°	10°	12°	14°	16°	18°	20°	22°	24°	26°	28°	30°	32°	34°	36°	38°
1181	1177	1171	1160	1141	1114	1081	1042	992	926	842	748	650	548	446	352	269	205	153	115
100%	100%	99%	98%	97%	94%	92%	88%	84%	78%	71%	63%	55%	46%	38%	30%	23%	17%	13%	10%

Beam angle 50%	Field angle 10%	Cutoff angle 2,5%	Intensity ratio in 120° cone	Intensity ratio in 90° cone
50.1°	75.7°	93°	1.0%	1.0%

THIS PAGE INTENSIONALLY LEFT BLANK