

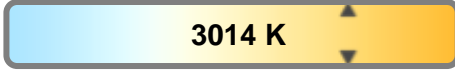
Light efficiency:



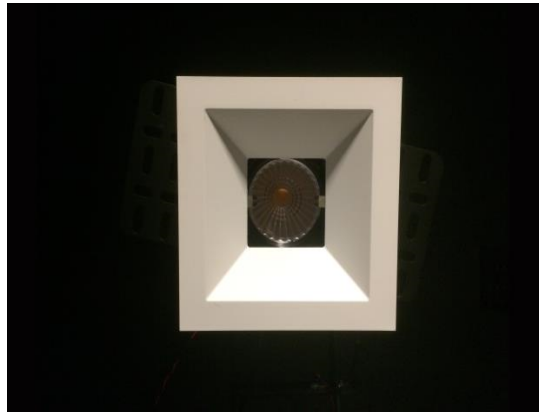
Light quality:



Color temperature:

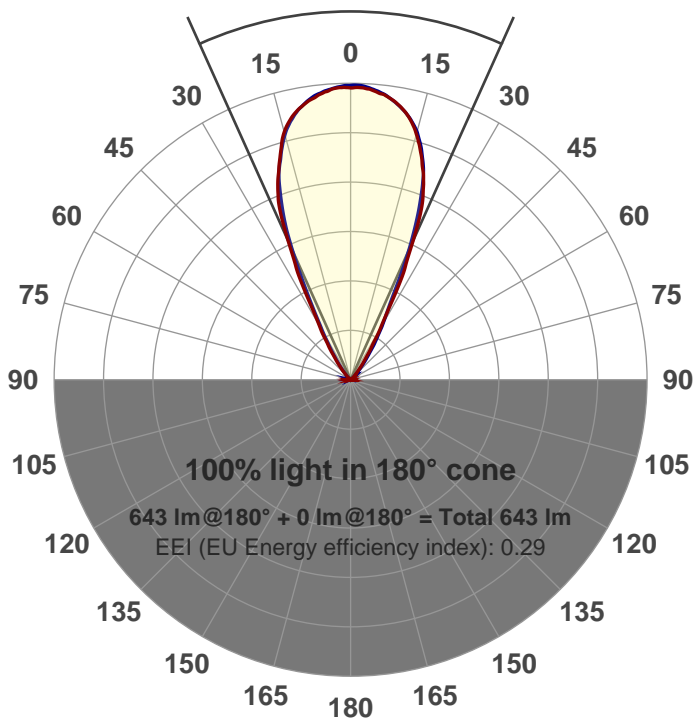


Output: 643 lm  
Peak: 1033 cd  
Power: 15.1 W  
PF: 0.98



Beam angle

48.4°



Product name:  
**GR-AD-WF-SQ**  
Item number:  
**GR-AD-WF-SQ**  
Date and time:  
**5/1/2017 2:39:18 PM**  
Description:

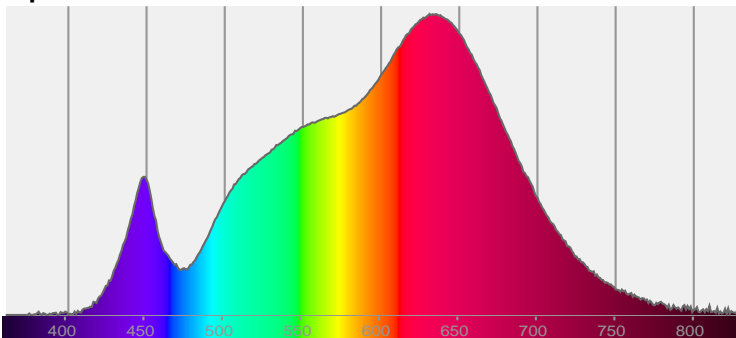
LUM: 643

PPF: 10.9

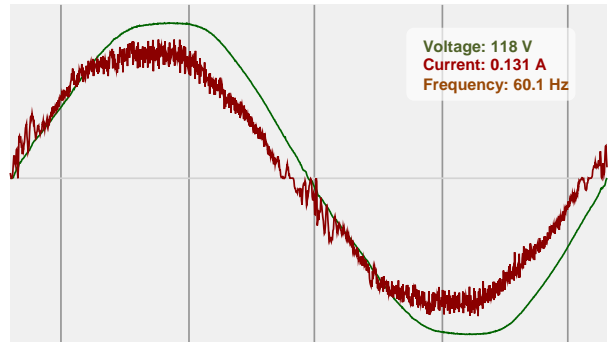


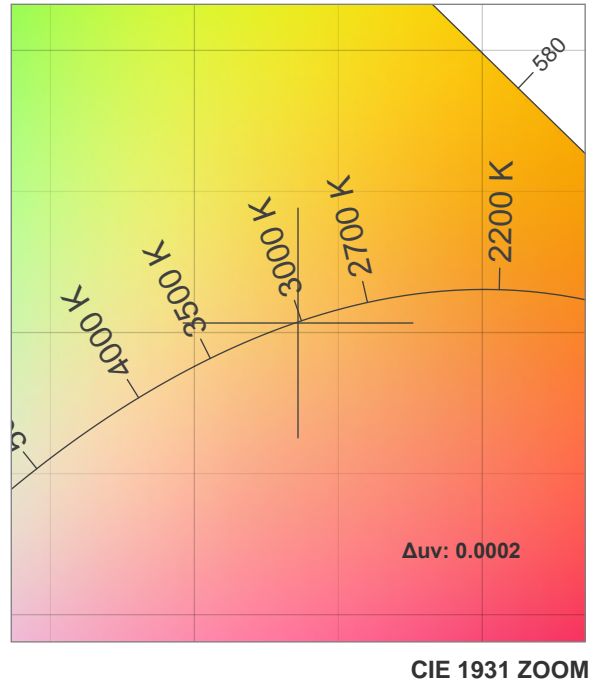
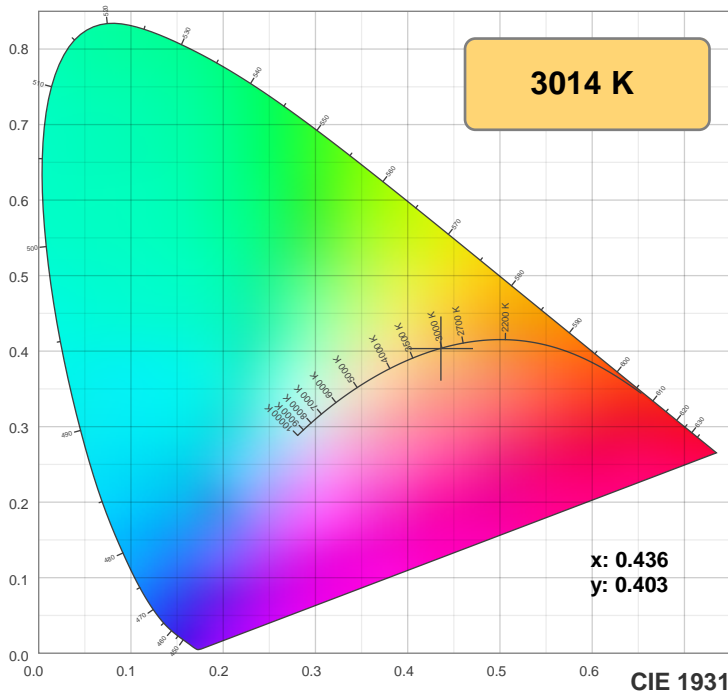
CIE 1931  
x: 0.436  
y: 0.403

Spectra

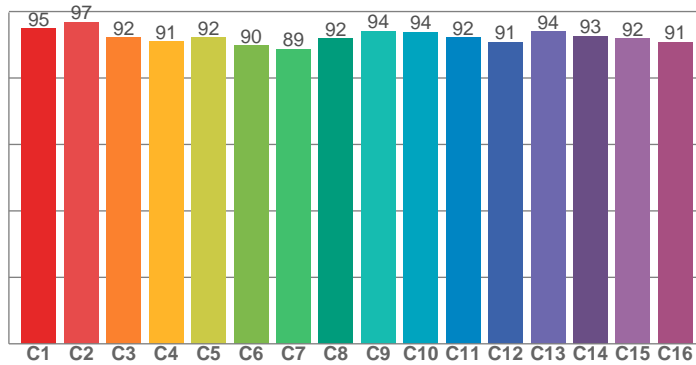


Power

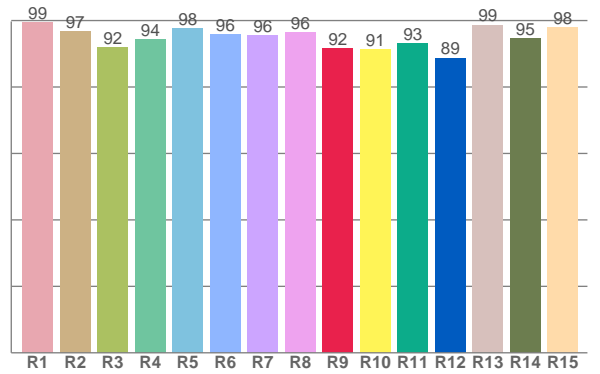




**TM30: 92.7**



**CRI: 96.0 (R1-R8)**



**CRI R values, only R1-R8 are used to calculate final CRI value**

R1	R2	R3	R4	R5	R6	R7	R8	R9	R10	R11	R12	R13	R14	R15
99.5	96.8	92.0	94.2	97.7	95.9	95.5	96.4	91.6	91.3	93.3	88.8	98.7	94.6	97.9

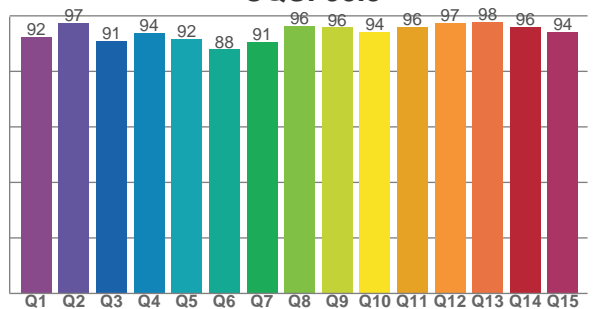
**TM30 C values, 16 binned values out of total of 99 C values**

C1	C2	C3	C4	C5	C6	C7	C8	C9	C10	C11	C12	C13	C14	C15	C16
94.8	96.9	92.3	91.0	92.1	89.8	88.7	91.8	94.1	93.8	92.3	90.8	94.0	92.7	91.9	90.9

**CQS Q values**

Q1	Q2	Q3	Q4	Q5	Q6	Q7	Q8	Q9	Q10	Q11	Q12	Q13	Q14	Q15
92.4	97.5	90.9	93.8	91.6	87.9	90.6	96.3	95.8	94.1	96.1	97.5	97.9	96.0	94.3

**CQS: 93.3**



## Color parameters

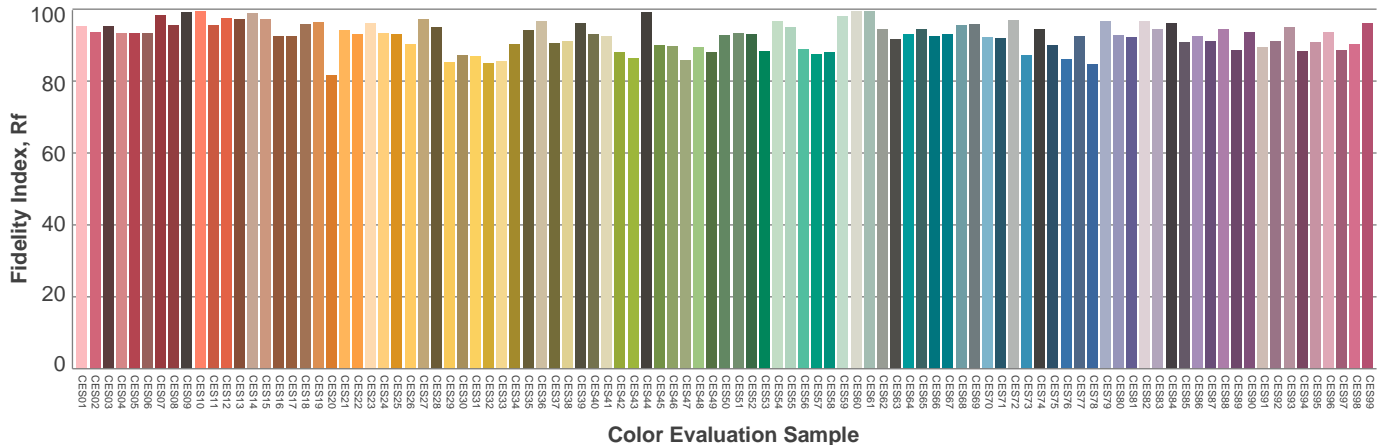
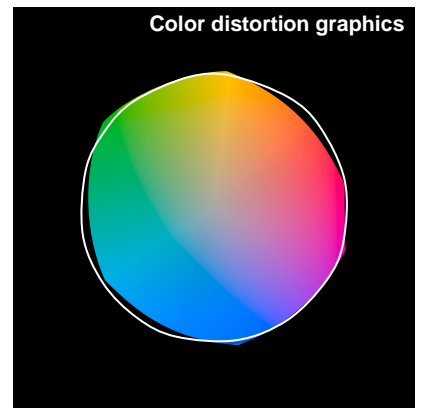
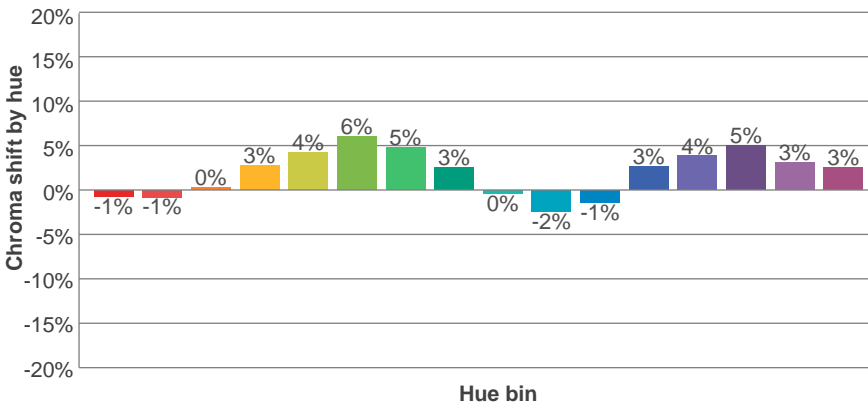
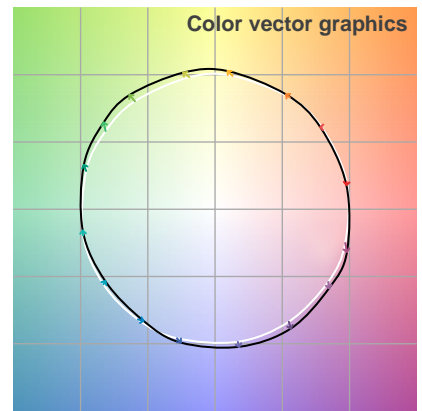
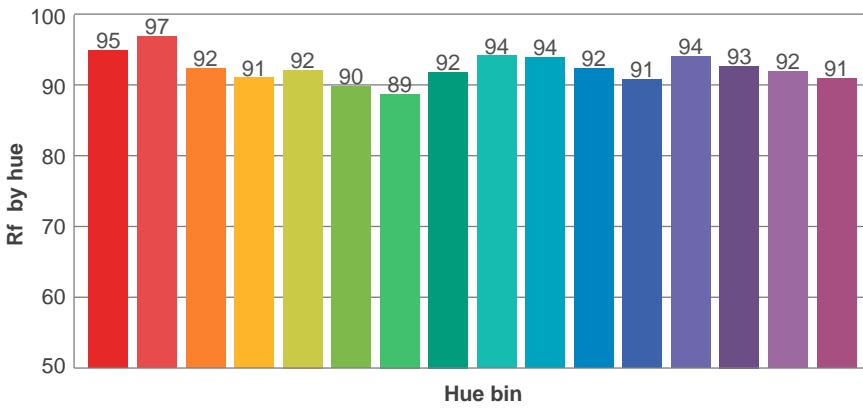
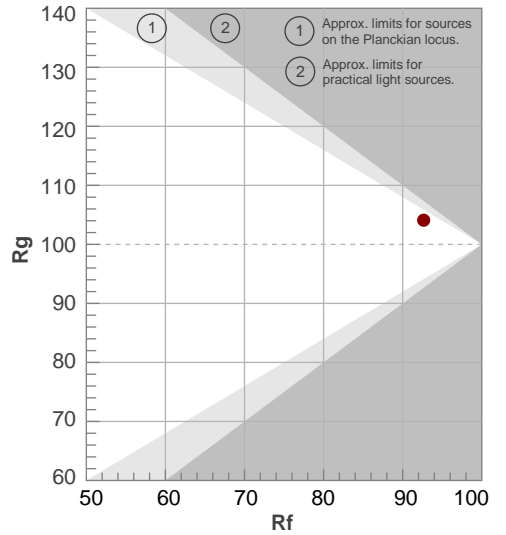
Color temperature	Color rendering index	Red component	Color fidelity	Color gamut	Color quality scale	Color coordinate cie 1931	Color coordinate cie 1931	Color coordinate	Color coordinate	Color deviation from black body
CCT	CRI	CRI R9	TM30 Rf	TM30 Rg	CQS	x	y	u	v	Δuv
3014 K	96.0	91.6	92.7	104.1	93.3	0.436	0.403	0.250	0.347	0.0002

# TM30 details

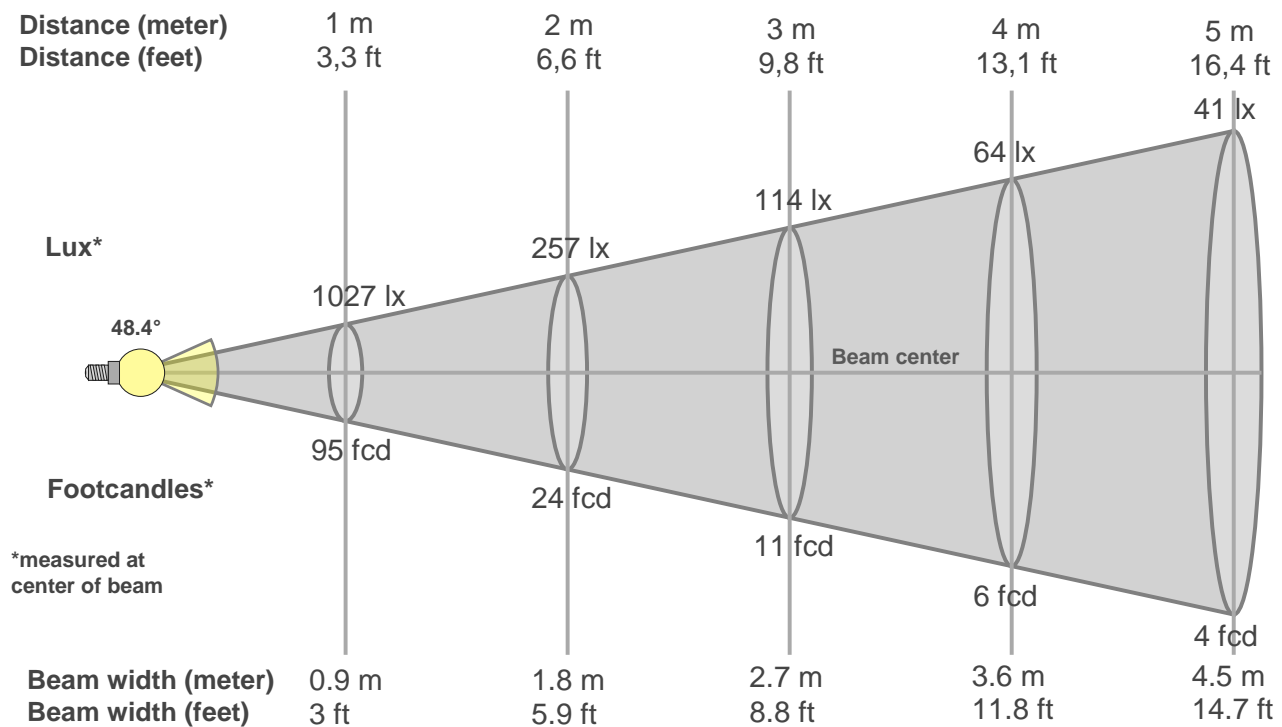
**Rf 92.7**  
Fidelity index Rf

**Rg 104.1**  
Gammut index Rg

Hue Bin	R <sub>f</sub>	Graphic shifts (%)	
		Chroma	Hue
1	95	-1%	-2%
2	97	-1%	1%
3	92	0%	4%
4	91	3%	4%
5	92	4%	4%
6	90	6%	1%
7	89	5%	-4%
8	92	3%	-4%
9	94	0%	-4%
10	94	-2%	-1%
11	92	-1%	4%
12	91	3%	3%
13	94	4%	0%
14	93	5%	-2%
15	92	3%	-3%
16	91	3%	-6%



## Beam details



### Beam intensities from 1-20m

1m	2m	3m	4m	5m	6m	7m	8m	9m	10m	11m	12m	13m	14m	15m	16m	17m	18m	19m	20m
3.3ft	6.6ft	9.8ft	13.1ft	16.4ft	19.7ft	23ft	26.2ft	29.5ft	32.8ft	36.1ft	39.4ft	42.7ft	45.9ft	49.2ft	52.5ft	55.8ft	59.1ft	62.3ft	65.6ft
1027lx	257lx	114lx	64lx	41lx	29lx	21lx	16lx	13lx	10lx	8lx	7lx	6lx	5lx	5lx	4lx	4lx	3lx	3lx	3lx
95.4fcd	23.9fcd	10.6fcd	6fcd	3.8fcd	2.7fcd	1.9fcd	1.5fcd	1.2fcd	1fcd	0.8fcd	0.7fcd	0.6fcd	0.5fcd	0.4fcd	0.4fcd	0.3fcd	0.3fcd	0.3fcd	0.2fcd

### Intensities in 0° c-plane

0°	2°	4°	6°	8°	10°	12°	14°	16°	18°	20°	22°	24°	26°	28°	30°	32°	34°	36°	38°
1027	1025	1018	1007	992	974	952	920	872	806	745	675	549	432	302	220	166	127	91	68
100%	100%	99%	98%	97%	95%	93%	90%	85%	78%	73%	66%	53%	42%	29%	21%	16%	12%	9%	7%

### Intensities in 90° c-plane

0°	2°	4°	6°	8°	10°	12°	14°	16°	18°	20°	22°	24°	26°	28°	30°	32°	34°	36°	38°
1027	1028	1021	1010	997	975	948	912	862	800	730	632	510	375	266	196	144	104	75	53
100%	100%	99%	98%	97%	95%	92%	89%	84%	78%	71%	62%	50%	37%	26%	19%	14%	10%	7%	5%

### Intensities in 180° c-plane

0°	2°	4°	6°	8°	10°	12°	14°	16°	18°	20°	22°	24°	26°	28°	30°	32°	34°	36°	38°
1027	1024	1019	1008	996	977	951	914	865	809	747	673	549	433	300	212	148	111	80	57
100%	100%	99%	98%	97%	95%	93%	89%	84%	79%	73%	65%	53%	42%	29%	21%	14%	11%	8%	6%

### Intensities in 270° c-plane

0°	2°	4°	6°	8°	10°	12°	14°	16°	18°	20°	22°	24°	26°	28°	30°	32°	34°	36°	38°
1027	1032	1023	1012	996	976	951	919	874	816	740	634	510	375	279	227	178	141	103	77
100%	100%	100%	99%	97%	95%	93%	89%	85%	79%	72%	62%	50%	37%	27%	22%	17%	14%	10%	8%

Beam angle 50%	Field angle 10%	Cutoff angle 2,5%	Intensity ratio in 120° cone	Intensity ratio in 90° cone
48.4°	69.8°	85.8°	1.0%	1.0%



