

Light efficiency:



Light quality:



Color temperature:



Output: 1071 lm

Peak: 2467 cd

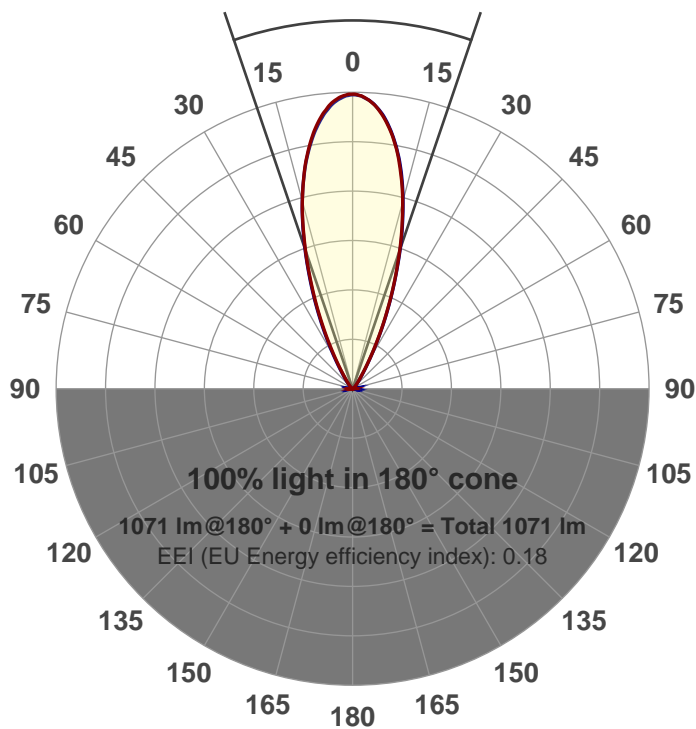
Power: 14.6 W

PF: 0.97



Beam angle

37.6°



Product name:
GR-CZ14-FL-RD-91A
 Item number:
GR-CZ14-FL-RD-91A
 Date and time:
7/5/2017 11:12:10 AM
 Description:

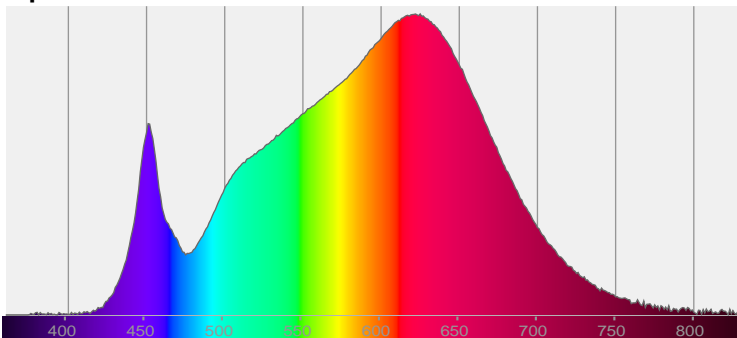
LUM: 1071

PPF: 18.2

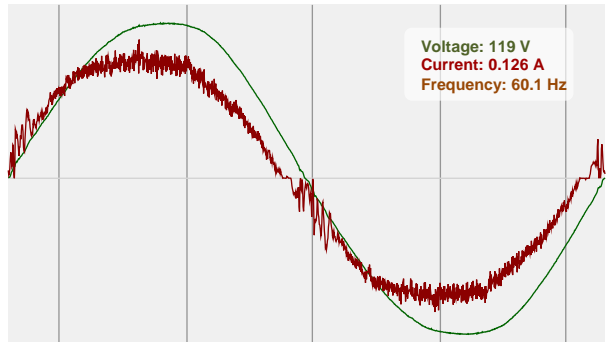


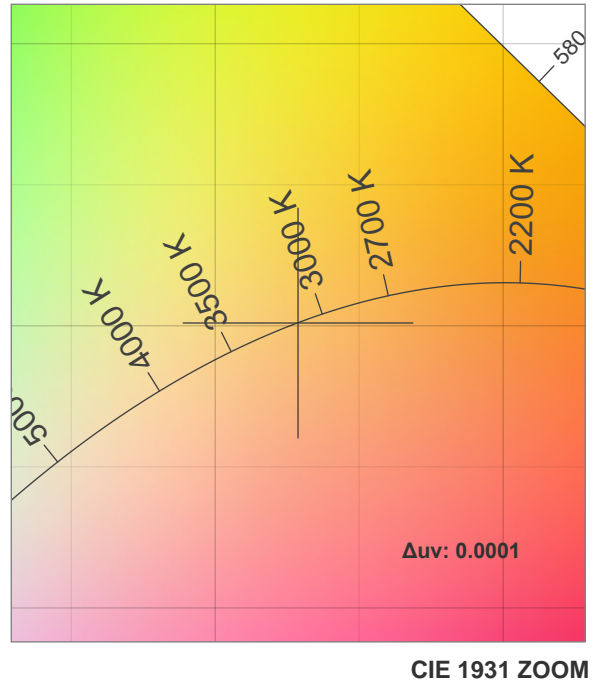
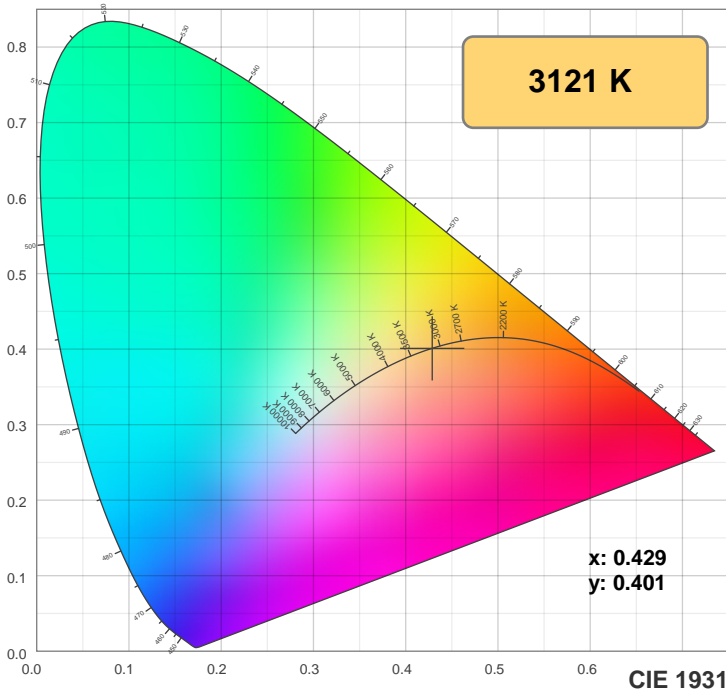
CIE 1931
 x: 0.429
 y: 0.401

Spectra

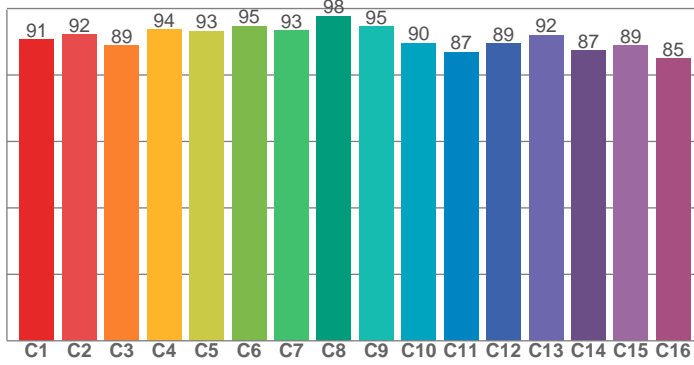


Power

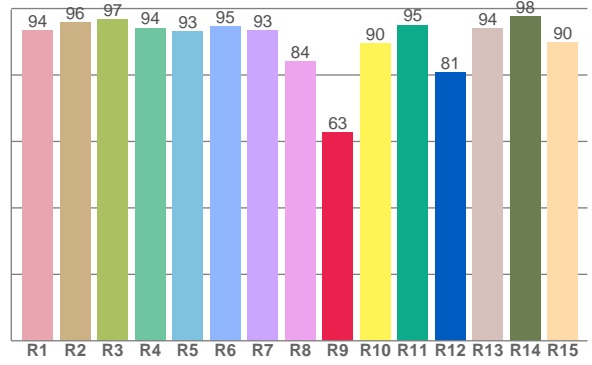




TM30: 91.2



CRI: 93.2 (R1-R8)



CRI R values, only R1-R8 are used to calculate final CRI value

R1	R2	R3	R4	R5	R6	R7	R8	R9	R10	R11	R12	R13	R14	R15
93.6	95.8	96.8	94.2	93.2	94.7	93.4	84.2	62.7	89.6	95.1	80.7	94.1	97.6	89.8

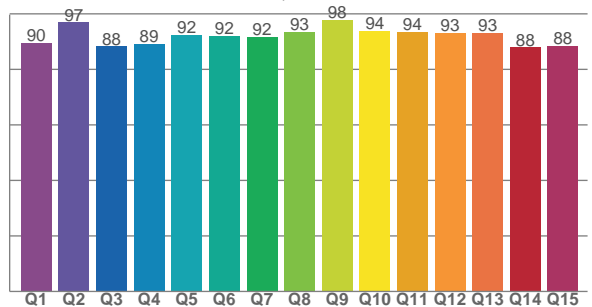
TM30 C values, 16 binned values out of total of 99 C values

C1	C2	C3	C4	C5	C6	C7	C8	C9	C10	C11	C12	C13	C14	C15	C16
90.8	92.1	88.9	93.8	93.3	94.8	93.4	97.8	94.6	89.6	87.0	89.4	92.1	87.5	88.9	85.0

CQS Q values

Q1	Q2	Q3	Q4	Q5	Q6	Q7	Q8	Q9	Q10	Q11	Q12	Q13	Q14	Q15
89.6	96.9	88.2	89.2	92.3	92.1	91.5	93.4	97.8	93.9	93.5	93.3	93.1	87.9	88.3

CQS: 91.5



Color parameters

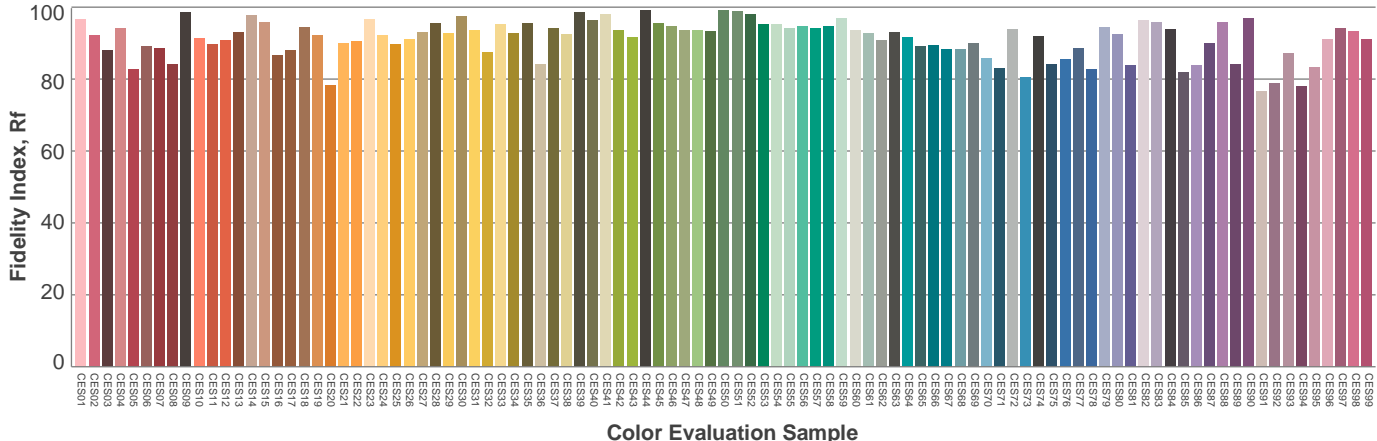
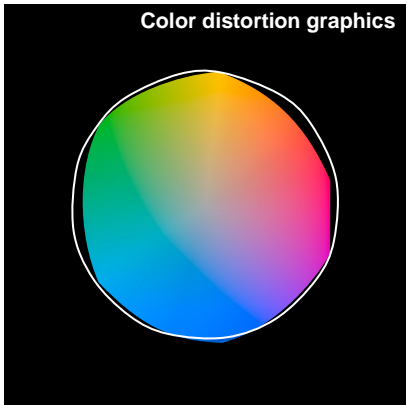
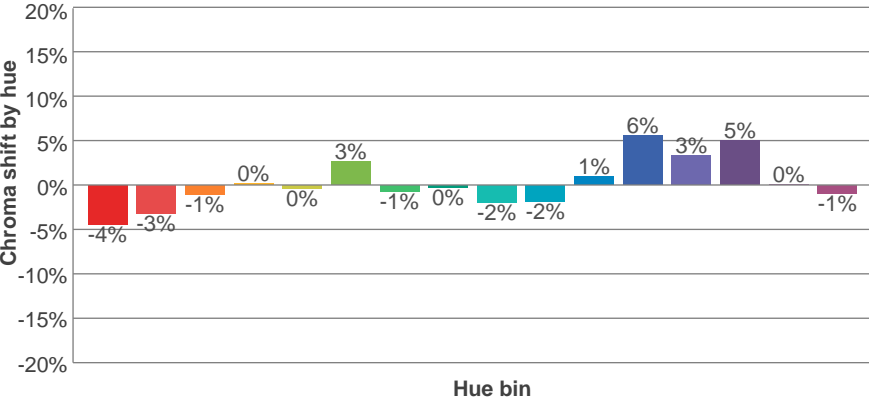
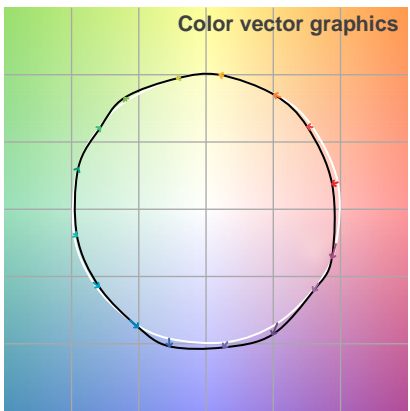
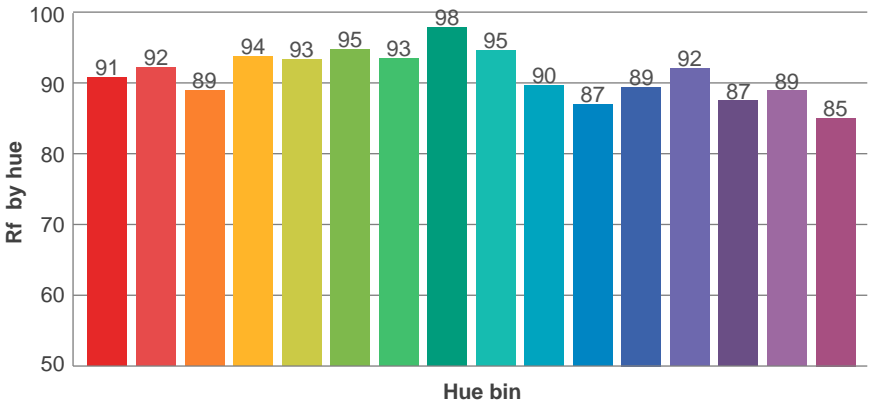
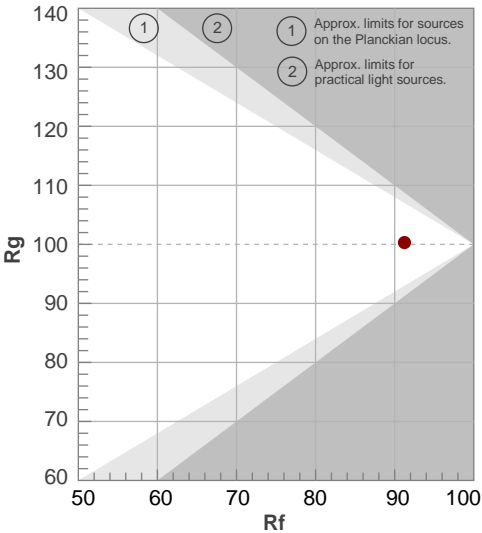
Color temperature	Color rendering index	Red component	Color fidelity	Color gamut	Color quality scale	Color coordinate cie 1931	Color coordinate cie 1931	Color coordinate	Color coordinate	Color diviation from black body
CCT	CRI	CRI R9	TM30 Rf	TM30 Rg	CQS	x	y	u	v	Δuv
3121 K	93.2	62.7	91.2	100.3	91.5	0.429	0.401	0.247	0.346	0.0001

TM30 details

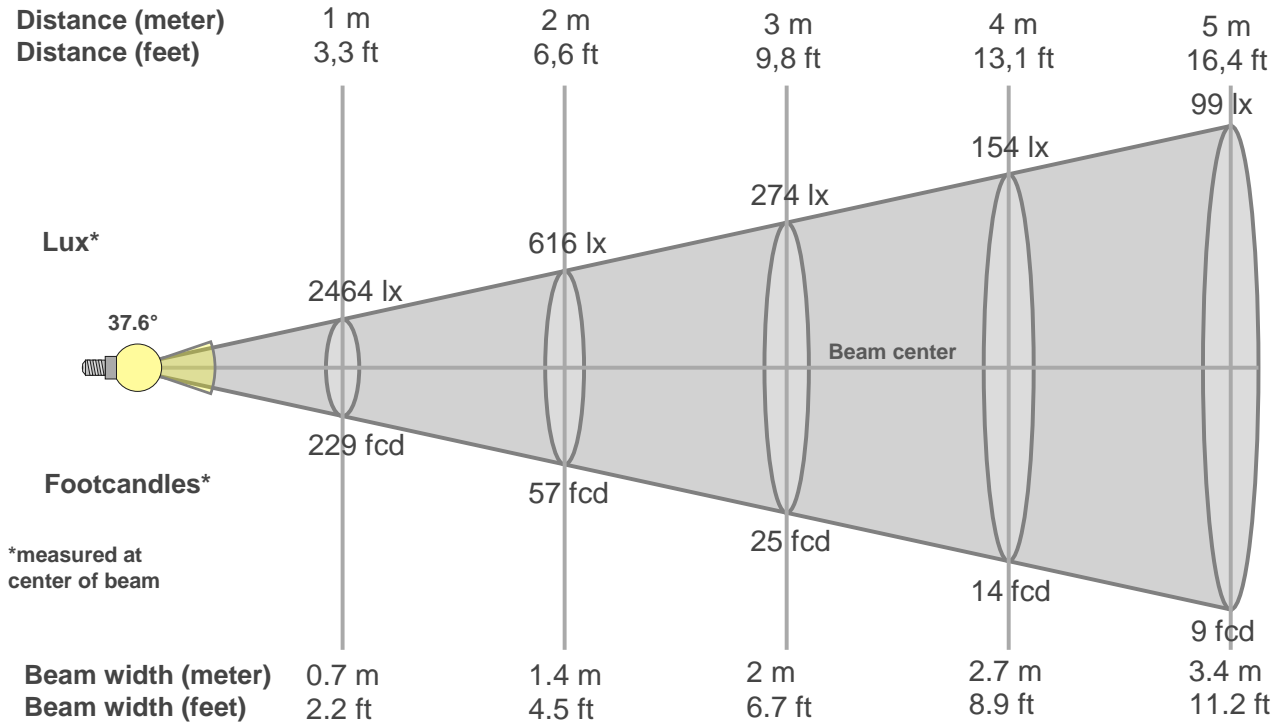
Rf 91.2
Fidelity index Rf

Rg 100.3
Gammut index Rg

Hue Bin	R _f	Graphic shifts (%)	
		Chroma	Hue
1	91	-4%	-1%
2	92	-3%	2%
3	89	-1%	5%
4	94	0%	3%
5	93	0%	3%
6	95	3%	0%
7	93	-1%	-2%
8	98	0%	-1%
9	95	-2%	2%
10	90	-2%	5%
11	87	1%	8%
12	89	6%	1%
13	92	3%	-3%
14	87	5%	-8%
15	89	0%	-6%
16	85	-1%	-11%



Beam details



Beam intensities from 1-20m

1m	2m	3m	4m	5m	6m	7m	8m	9m	10m	11m	12m	13m	14m	15m	16m	17m	18m	19m	20m
3.3ft	6.6ft	9.8ft	13.1ft	16.4ft	19.7ft	23ft	26.2ft	29.5ft	32.8ft	36.1ft	39.4ft	42.7ft	45.9ft	49.2ft	52.5ft	55.8ft	59.1ft	62.3ft	65.6ft
2464lx	616lx	274lx	154lx	99lx	68lx	50lx	38lx	30lx	25lx	20lx	17lx	15lx	13lx	11lx	10lx	9lx	8lx	7lx	6lx
228.9fcd	57.2fcd	25.4fcd	14.3fcd	9.2fcd	6.4fcd	4.7fcd	3.6fcd	2.8fcd	2.3fcd	1.9fcd	1.6fcd	1.4fcd	1.2fcd	1fcd	0.9fcd	0.8fcd	0.7fcd	0.6fcd	0.6fcd

Intensities in 0° c-plane

0°	2°	4°	6°	8°	10°	12°	14°	16°	18°	20°	22°	24°	26°	28°	30°	32°	34°	36°	38°
2464	2451	2405	2323	2212	2072	1911	1723	1524	1308	1098	892	702	530	383	268	184	129	93	69
100%	99%	98%	94%	90%	84%	78%	70%	62%	53%	45%	36%	29%	22%	16%	11%	7%	5%	4%	3%

Intensities in 90° c-plane

0°	2°	4°	6°	8°	10°	12°	14°	16°	18°	20°	22°	24°	26°	28°	30°	32°	34°	36°	38°
2464	2441	2391	2308	2197	2061	1904	1723	1528	1320	1112	913	728	563	420	302	213	153	111	84
100%	99%	97%	94%	89%	84%	77%	70%	62%	54%	45%	37%	30%	23%	17%	12%	9%	6%	5%	3%

Intensities in 180° c-plane

0°	2°	4°	6°	8°	10°	12°	14°	16°	18°	20°	22°	24°	26°	28°	30°	32°	34°	36°	38°
2464	2448	2396	2314	2204	2067	1902	1719	1515	1311	1096	897	707	540	395	277	193	136	99	74
100%	99%	97%	94%	89%	84%	77%	70%	61%	53%	44%	36%	29%	22%	16%	11%	8%	6%	4%	3%

Intensities in 270° c-plane

0°	2°	4°	6°	8°	10°	12°	14°	16°	18°	20°	22°	24°	26°	28°	30°	32°	34°	36°	38°
2464	2445	2399	2321	2211	2075	1916	1732	1528	1323	1106	904	715	549	401	285	203	145	107	81
100%	99%	97%	94%	90%	84%	78%	70%	62%	54%	45%	37%	29%	22%	16%	12%	8%	6%	4%	3%

Beam angle 50%	Field angle 10%	Cutoff angle 2,5%	Intensity ratio in 120° cone	Intensity ratio in 90° cone
37.6°	61.6°	79.2°	1.0%	1.0%

THIS PAGE INTENSIONALLY LEFT BLANK