

Light efficiency:



Light quality:



Color temperature:



Output: 1100 lm

Peak: 2844 cd

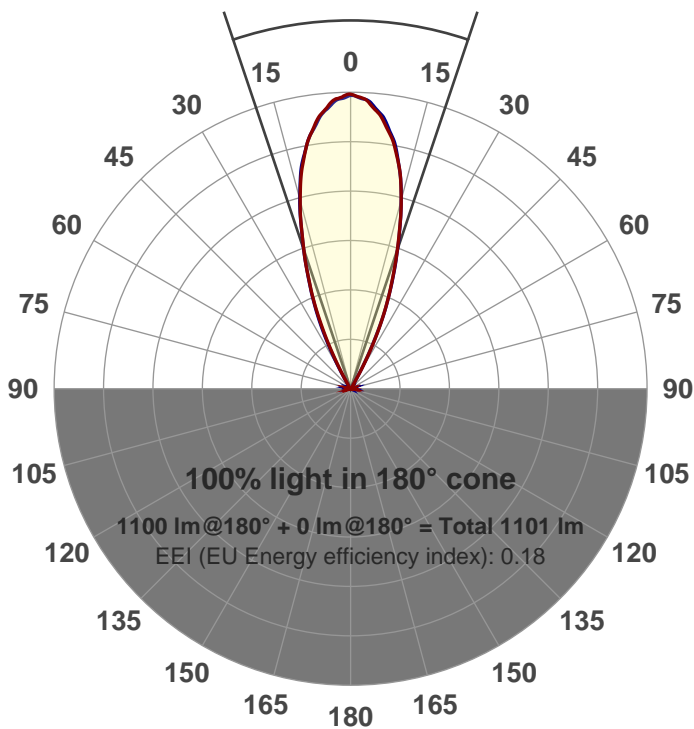
Power: 14.6 W

PF: 0.97



Beam angle

37.2°



Product name:
GR-CZ14-FL-RD
Item number:
GR-CZ14-FL-RD
Date and time:
7/5/2017 11:05:44 AM
Description:

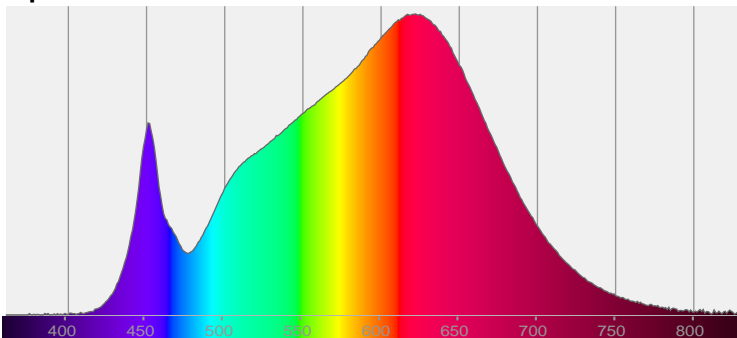
LUM: 1100

PPF: 18.7

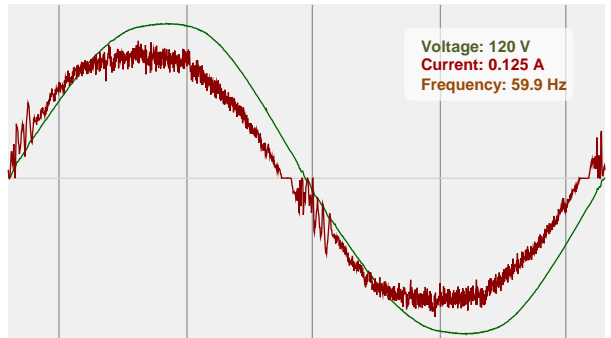


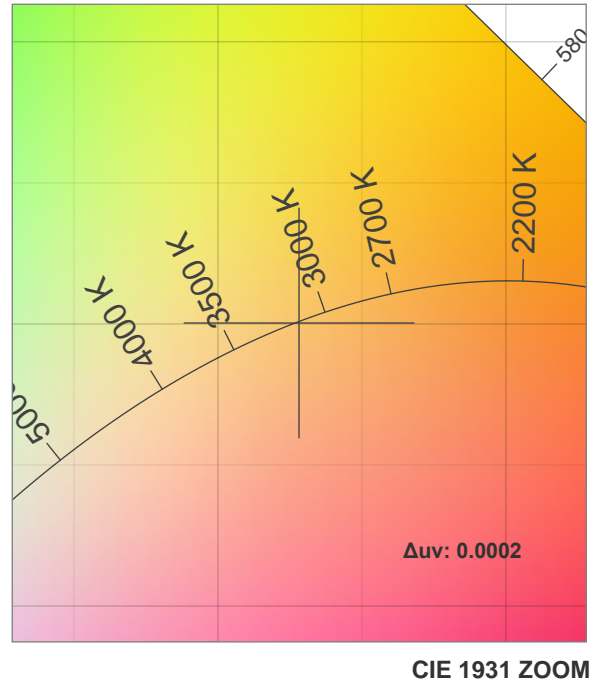
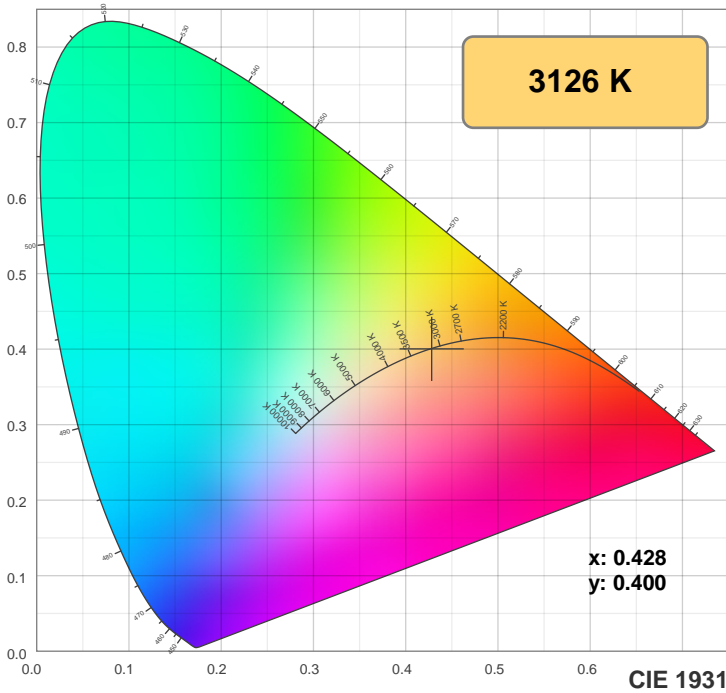
CIE 1931
x: 0.428
y: 0.400

Spectra

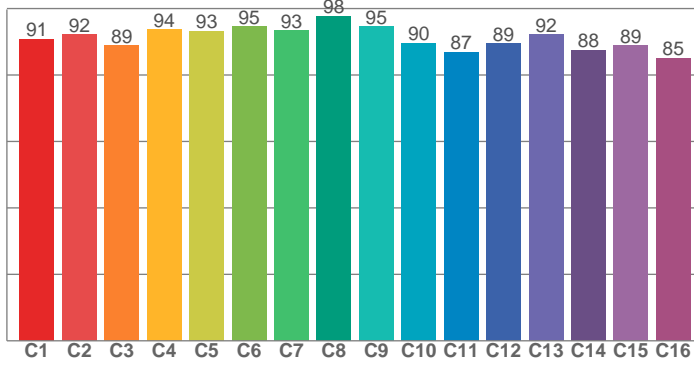


Power

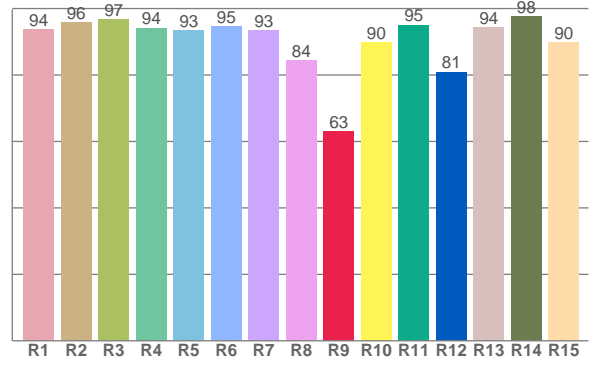




TM30: 91.2



CRI: 93.3 (R1-R8)



CRI R values, only R1-R8 are used to calculate final CRI value

R1	R2	R3	R4	R5	R6	R7	R8	R9	R10	R11	R12	R13	R14	R15
93.7	95.9	96.9	94.2	93.3	94.7	93.4	84.3	63.0	89.7	95.1	80.9	94.3	97.6	90.0

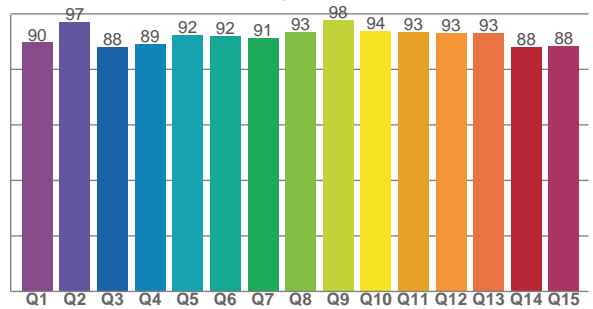
TM30 C values, 16 binned values out of total of 99 C values

C1	C2	C3	C4	C5	C6	C7	C8	C9	C10	C11	C12	C13	C14	C15	C16
90.8	92.2	88.9	93.7	93.3	94.7	93.5	97.7	94.6	89.6	87.0	89.4	92.1	87.5	88.9	85.1

CQS Q values

Q1	Q2	Q3	Q4	Q5	Q6	Q7	Q8	Q9	Q10	Q11	Q12	Q13	Q14	Q15
89.7	96.9	88.2	89.2	92.3	92.2	91.4	93.4	97.8	93.8	93.4	93.2	93.1	88.0	88.4

CQS: 91.4



Color parameters

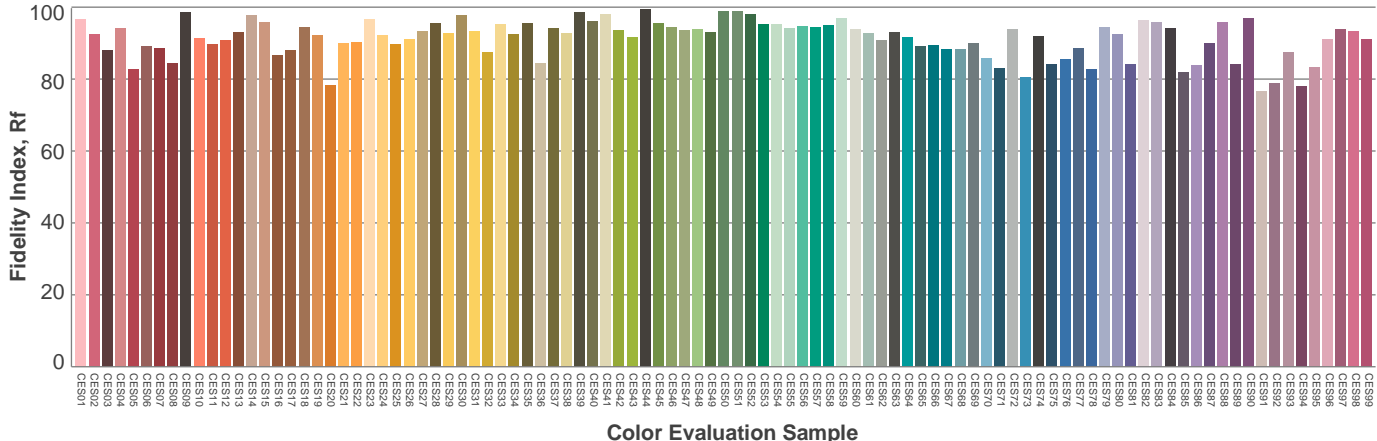
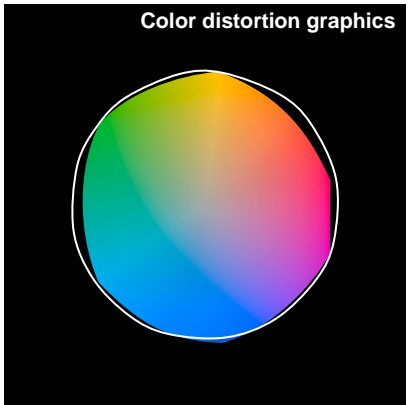
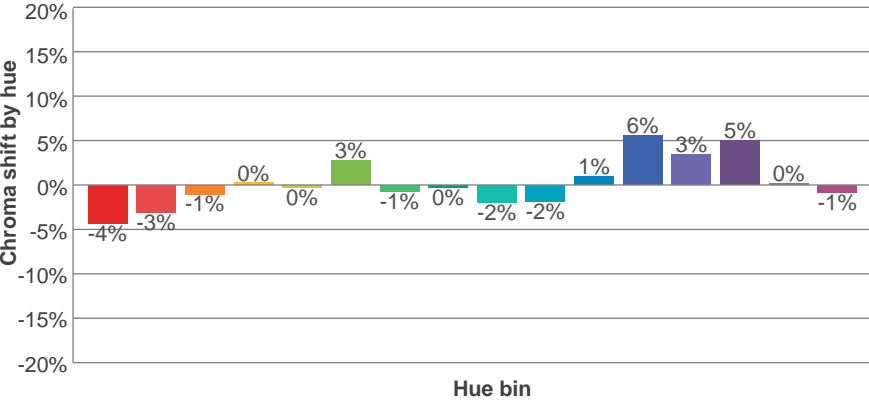
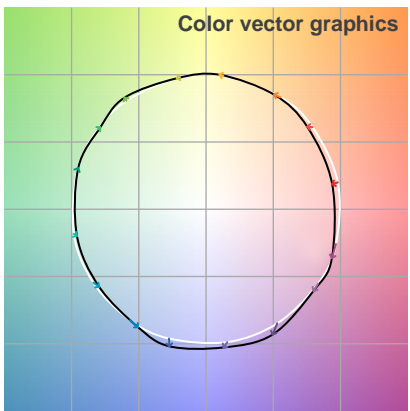
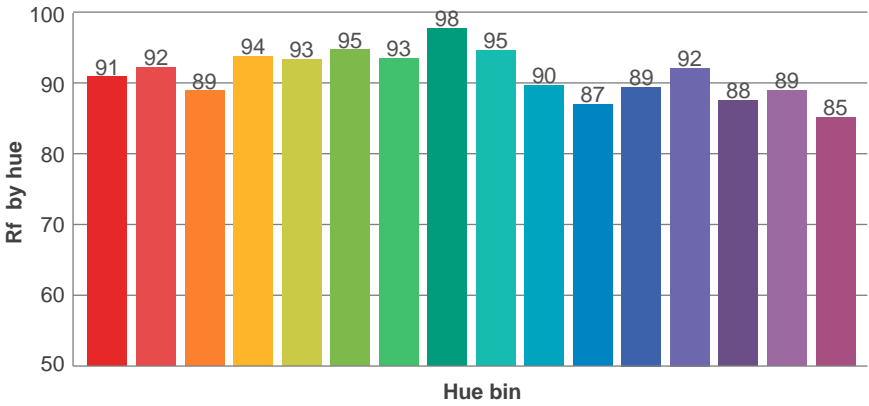
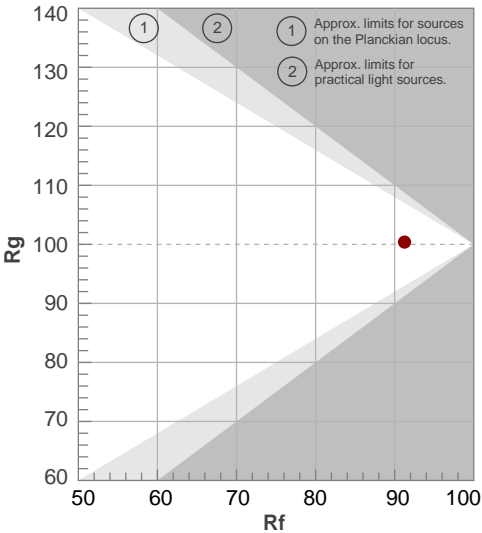
Color temperature	Color rendering index	Red component	Color fidelity	Color gamut	Color quality scale	Color coordinate cie 1931	Color coordinate cie 1931	Color coordinate	Color coordinate	Color deviation from black body
CCT	CRI	CRI R9	TM30 Rf	TM30 Rg	CQS	x	y	u	v	Δuv
3126 K	93.3	63.0	91.2	100.4	91.4	0.428	0.400	0.247	0.346	0.0002

TM30 details

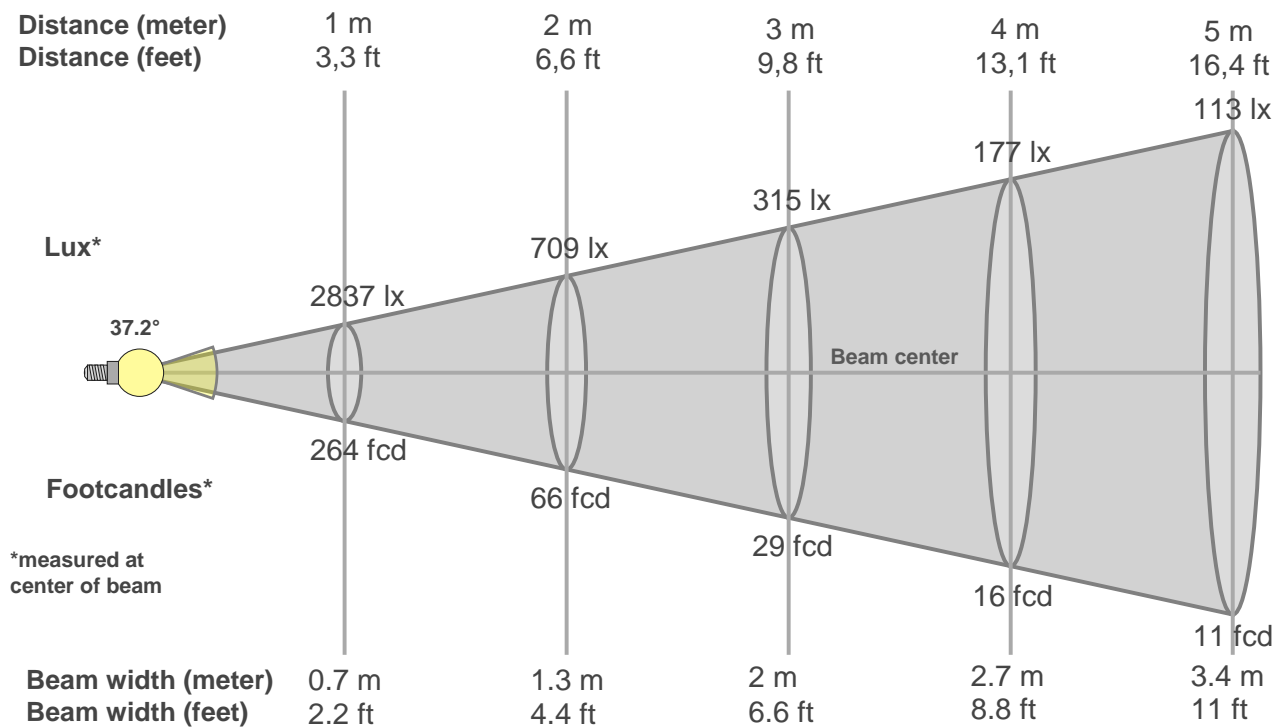
Rf 91.2
Fidelity index Rf

Rg 100.4
Gammut index Rg

Hue Bin	R _f	Graphic shifts (%)	
		Chroma	Hue
1	91	-4%	-1%
2	92	-3%	2%
3	89	-1%	5%
4	94	0%	3%
5	93	0%	3%
6	95	3%	0%
7	93	-1%	-2%
8	98	0%	-1%
9	95	-2%	2%
10	90	-2%	5%
11	87	1%	8%
12	89	6%	1%
13	92	3%	-3%
14	88	5%	-7%
15	89	0%	-6%
16	85	-1%	-11%



Beam details



Beam intensities from 1-20m

1m	2m	3m	4m	5m	6m	7m	8m	9m	10m	11m	12m	13m	14m	15m	16m	17m	18m	19m	20m
3.3ft	6.6ft	9.8ft	13.1ft	16.4ft	19.7ft	23ft	26.2ft	29.5ft	32.8ft	36.1ft	39.4ft	42.7ft	45.9ft	49.2ft	52.5ft	55.8ft	59.1ft	62.3ft	65.6ft
2837lx	709lx	315lx	177lx	113lx	79lx	58lx	44lx	35lx	28lx	23lx	20lx	17lx	14lx	13lx	11lx	10lx	9lx	8lx	7lx
263.5fcd	65.9fcd	29.3fcd	16.5fcd	10.5fcd	7.3fcd	5.4fcd	4.1fcd	3.3fcd	2.6fcd	2.2fcd	1.8fcd	1.6fcd	1.3fcd	1.2fcd	1fcd	0.9fcd	0.8fcd	0.7fcd	0.7fcd

Intensities in 0° c-plane

0°	2°	4°	6°	8°	10°	12°	14°	16°	18°	20°	22°	24°	26°	28°	30°	32°	34°	36°	38°
2837	2812	2766	2672	2550	2408	2218	2002	1760	1490	1248	1006	759	513	285	121	52	38	32	28
100%	99%	98%	94%	90%	85%	78%	71%	62%	53%	44%	35%	27%	18%	10%	4%	2%	1%	1%	1%

Intensities in 90° c-plane

0°	2°	4°	6°	8°	10°	12°	14°	16°	18°	20°	22°	24°	26°	28°	30°	32°	34°	36°	38°
2837	2801	2743	2664	2538	2407	2239	2017	1768	1493	1242	1018	797	569	343	158	56	38	32	28
100%	99%	97%	94%	89%	85%	79%	71%	62%	53%	44%	36%	28%	20%	12%	6%	2%	1%	1%	1%

Intensities in 180° c-plane

0°	2°	4°	6°	8°	10°	12°	14°	16°	18°	20°	22°	24°	26°	28°	30°	32°	34°	36°	38°
2837	2813	2750	2664	2535	2402	2223	2010	1760	1490	1239	1012	785	552	329	150	57	39	33	29
100%	99%	97%	94%	89%	85%	78%	71%	62%	53%	44%	36%	28%	19%	12%	5%	2%	1%	1%	1%

Intensities in 270° c-plane

0°	2°	4°	6°	8°	10°	12°	14°	16°	18°	20°	22°	24°	26°	28°	30°	32°	34°	36°	38°
2837	2805	2770	2679	2563	2423	2225	2012	1758	1500	1252	1010	782	525	294	121	52	37	31	27
100%	99%	98%	94%	90%	85%	78%	71%	62%	53%	44%	36%	28%	19%	10%	4%	2%	1%	1%	1%

Beam angle 50%	Field angle 10%	Cutoff angle 2,5%	Intensity ratio in 120° cone	Intensity ratio in 90° cone
37.2°	56.6°	62.5°	1.0%	1.0%

THIS PAGE INTENSIONALLY LEFT BLANK