

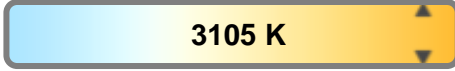
Light efficiency:



Light quality:



Color temperature:

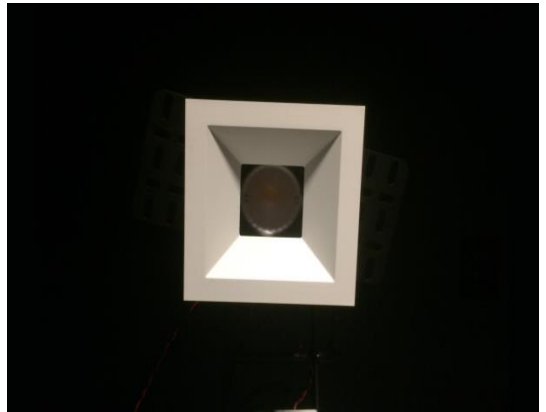


Output: 858 lm

Peak: 2111 cd

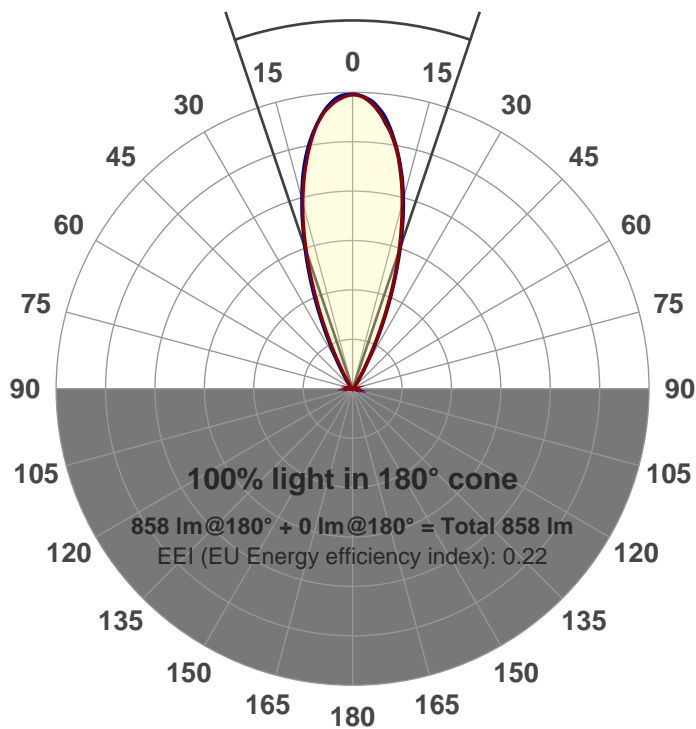
Power: 14.7 W

PF: 0.97



Beam angle

37.3°



Product name:
GR-CZ14-FL-SQ-91A
Item number:
GR-CZ14-FL-SQ-91A
Date and time:
5/12/2017 1:51:01 PM
Description:

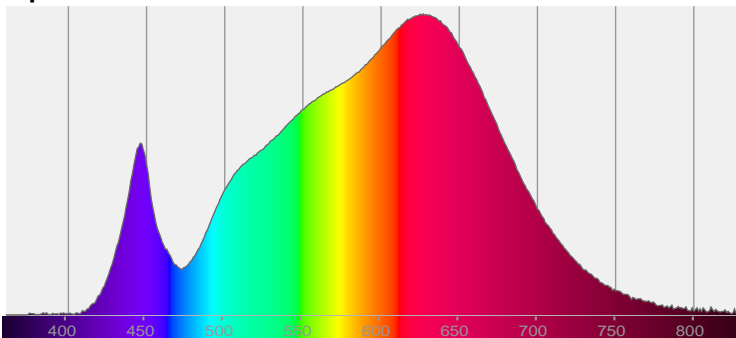
LUM: 858

PPF: 15.2

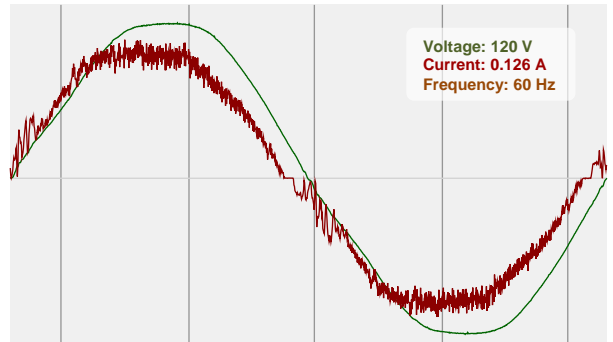


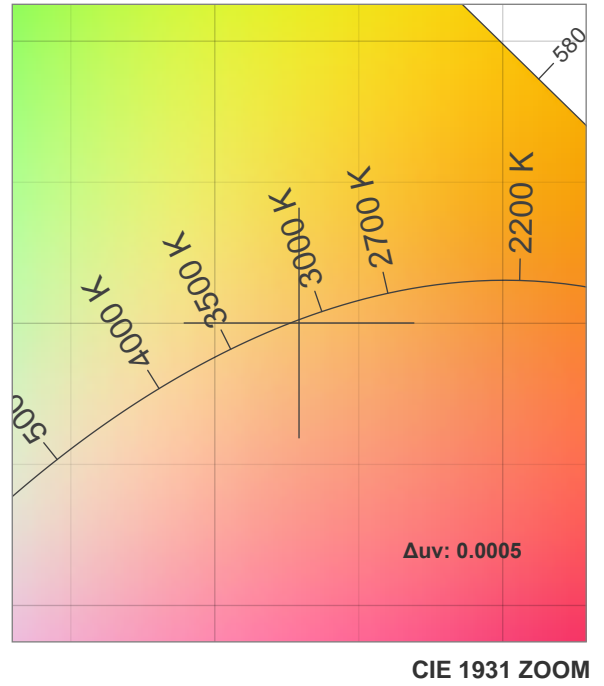
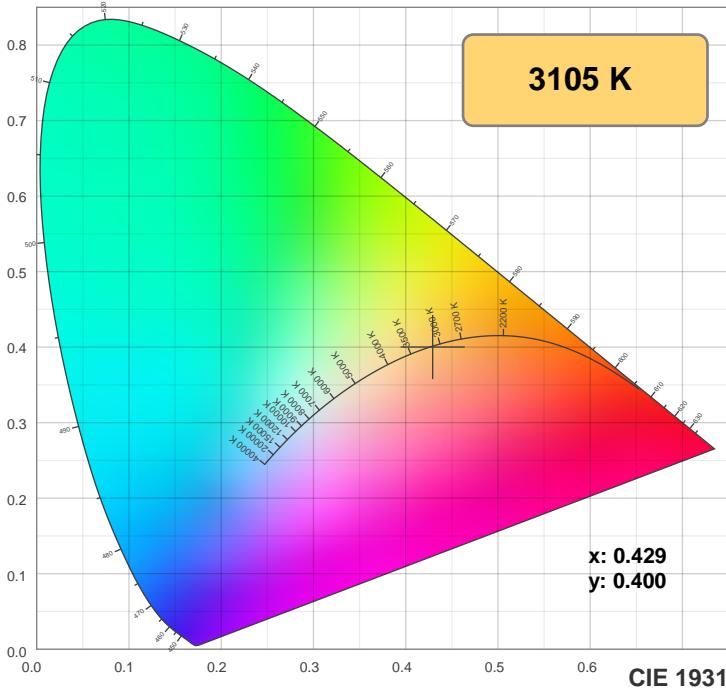
CIE 1931
x: 0.429
y: 0.400

Spectra



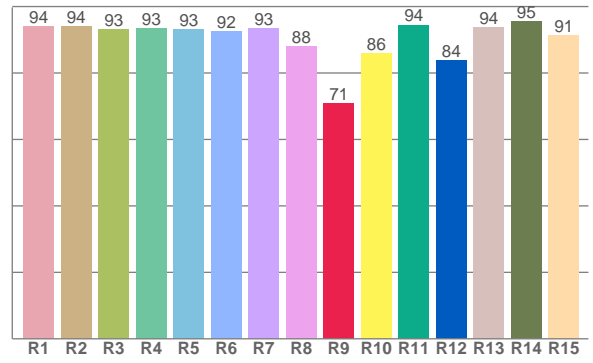
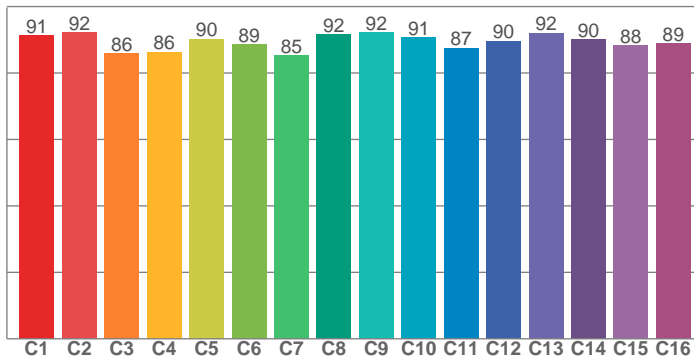
Power





TM30: 89.5

CRI: 92.7 (R1-R8)



CRI R values, only R1-R8 are used to calculate final CRI value

R1	R2	R3	R4	R5	R6	R7	R8	R9	R10	R11	R12	R13	R14	R15
93.9	94.2	93.0	93.4	93.1	92.4	93.5	88.1	71.0	85.8	94.5	83.9	93.6	95.4	91.4

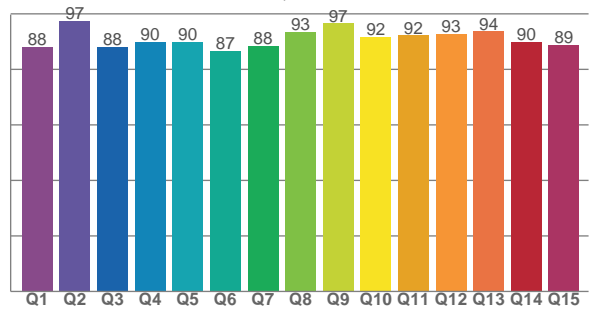
TM30 C values, 16 binned values out of total of 99 C values

C1	C2	C3	C4	C5	C6	C7	C8	C9	C10	C11	C12	C13	C14	C15	C16
91.2	92.2	85.9	86.3	90.2	88.6	85.3	91.5	92.2	90.7	87.5	89.6	92.0	90.2	88.3	88.9

CQS Q values

Q1	Q2	Q3	Q4	Q5	Q6	Q7	Q8	Q9	Q10	Q11	Q12	Q13	Q14	Q15
88.0	97.4	88.0	89.9	89.8	86.8	88.3	93.3	96.5	91.7	92.2	92.9	93.7	89.7	88.9

CQS: 90.5



Color parameters

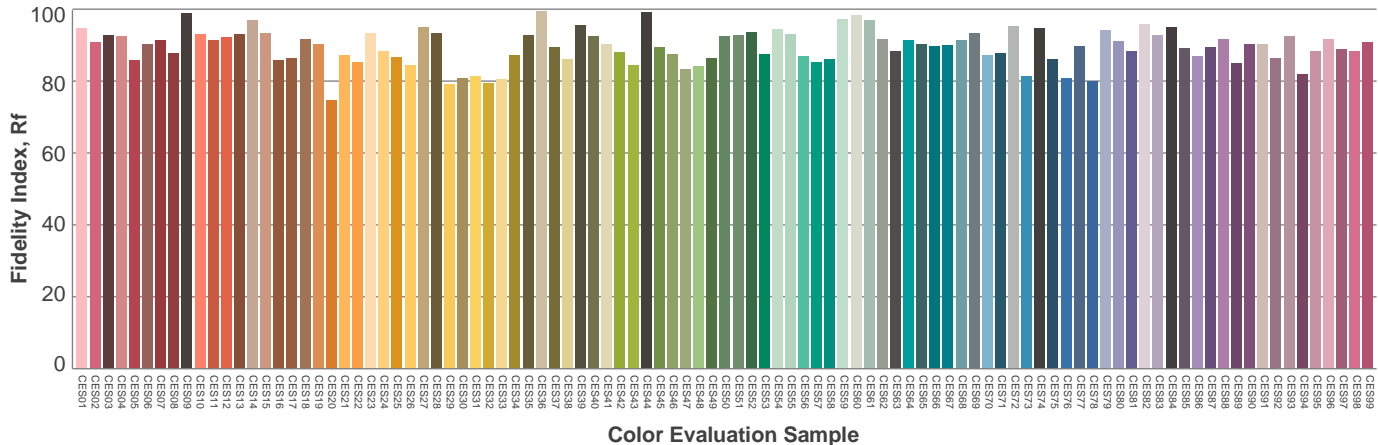
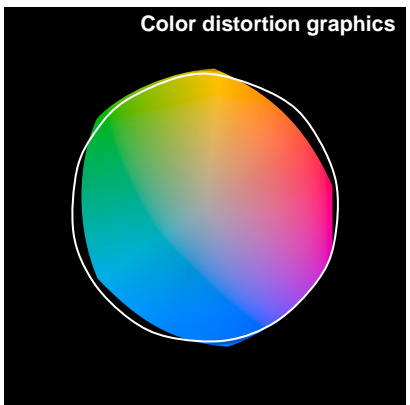
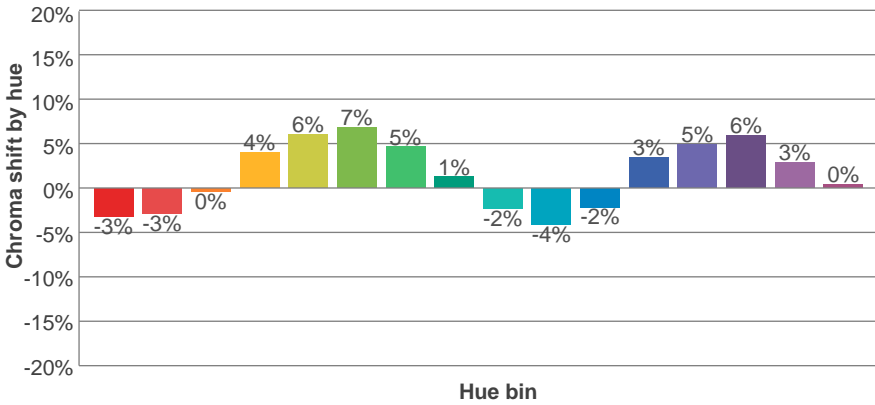
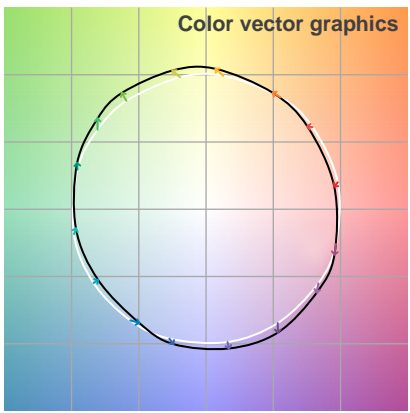
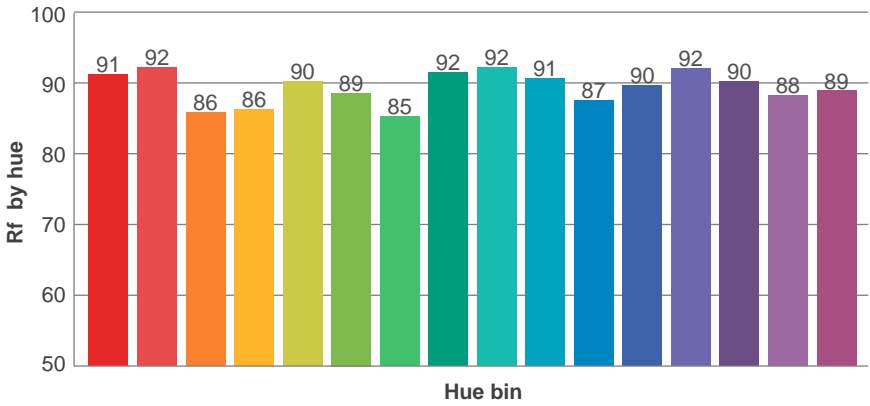
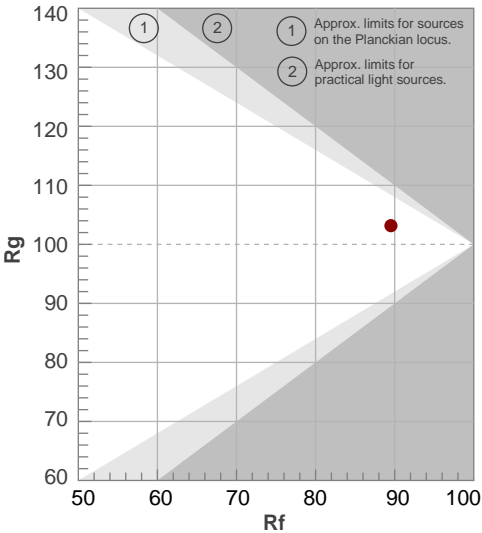
Color temperature	Color rendering index	Red component	Color fidelity	Color gamut	Color quality scale	Color coordinate cie 1931	Color coordinate cie 1931	Color coordinate	Color coordinate	Color deviation from black body
CCT	CRI	CRI R9	TM30 Rf	TM30 Rg	CQS	x	y	u	v	Δuv
3105 K	92.7	71.0	89.5	103.2	90.5	0.429	0.400	0.247	0.346	0.0005

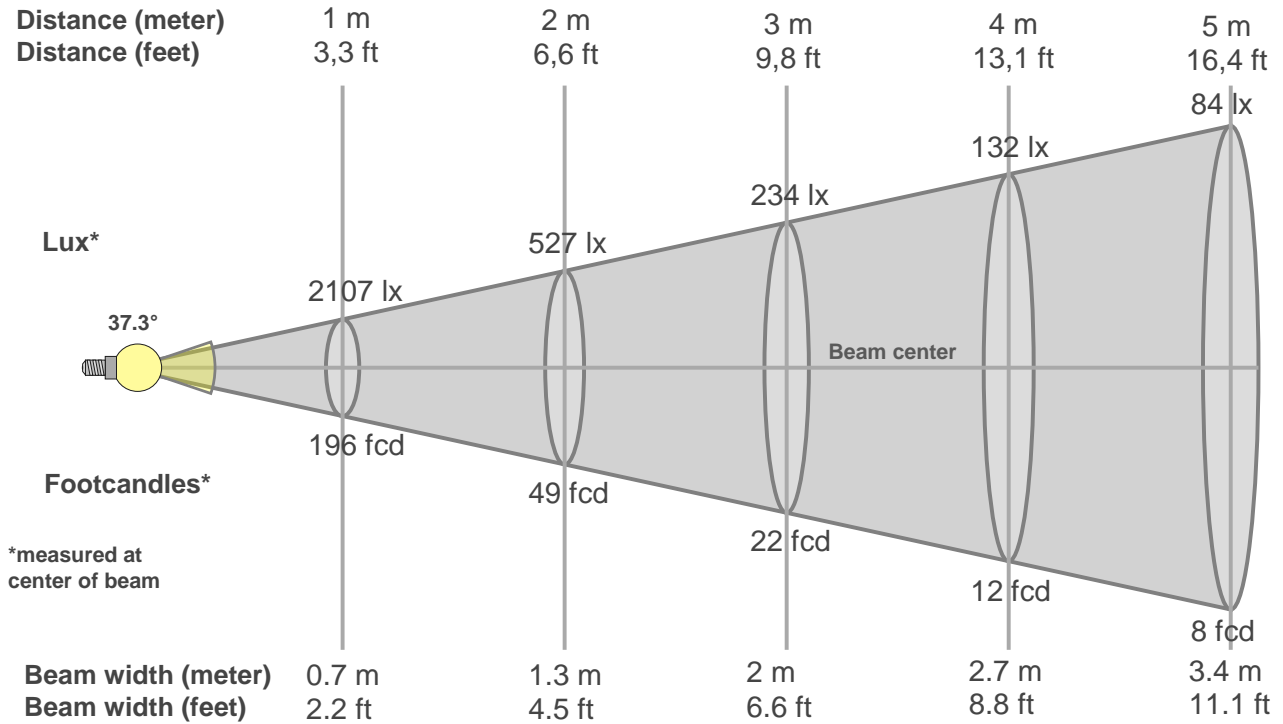
TM30 details

Rf 89.5
Fidelity index Rf

Rg 103.2
Gammut index Rg

Hue Bin	R _f	Graphic shifts (%)	
		Chroma	Hue
1	91	-3%	-3%
2	92	-3%	3%
3	86	0%	7%
4	86	4%	7%
5	90	6%	5%
6	89	7%	0%
7	85	5%	-7%
8	92	1%	-5%
9	92	-2%	-4%
10	91	-4%	0%
11	87	-2%	6%
12	90	3%	4%
13	92	5%	0%
14	90	6%	-4%
15	88	3%	-6%
16	89	0%	-8%





Beam intensities from 1-20m

1m	2m	3m	4m	5m	6m	7m	8m	9m	10m	11m	12m	13m	14m	15m	16m	17m	18m	19m	20m
3.3ft	6.6ft	9.8ft	13.1ft	16.4ft	19.7ft	23ft	26.2ft	29.5ft	32.8ft	36.1ft	39.4ft	42.7ft	45.9ft	49.2ft	52.5ft	55.8ft	59.1ft	62.3ft	65.6ft
2107lx	527lx	234lx	132lx	84lx	59lx	43lx	33lx	26lx	21lx	17lx	15lx	12lx	11lx	9lx	8lx	7lx	7lx	6lx	5lx
195.7fcd	48.9fcd	21.7fcd	12.2fcd	7.8fcd	5.4fcd	4fcd	3.1fcd	2.4fcd	2fcd	1.6fcd	1.4fcd	1.2fcd	1fcd	0.9fcd	0.8fcd	0.7fcd	0.6fcd	0.5fcd	0.5fcd

Intensities in 0° c-plane

0°	2°	4°	6°	8°	10°	12°	14°	16°	18°	20°	22°	24°	26°	28°	30°	32°	34°	36°	38°
2107	2085	2046	1983	1890	1765	1621	1463	1289	1100	900	701	515	352	223	140	90	62	46	36
100%	99%	97%	94%	90%	84%	77%	69%	61%	52%	43%	33%	24%	17%	11%	7%	4%	3%	2%	2%

Intensities in 90° c-plane

0°	2°	4°	6°	8°	10°	12°	14°	16°	18°	20°	22°	24°	26°	28°	30°	32°	34°	36°	38°
2107	2102	2064	1994	1898	1787	1654	1494	1316	1130	945	761	585	427	298	203	138	95	67	49
100%	100%	98%	95%	90%	85%	78%	71%	62%	54%	45%	36%	28%	20%	14%	10%	7%	5%	3%	2%

Intensities in 180° c-plane

0°	2°	4°	6°	8°	10°	12°	14°	16°	18°	20°	22°	24°	26°	28°	30°	32°	34°	36°	38°
2107	2089	2041	1967	1874	1762	1622	1460	1280	1097	910	723	540	378	245	152	95	63	46	36
100%	99%	97%	93%	89%	84%	77%	69%	61%	52%	43%	34%	26%	18%	12%	7%	5%	3%	2%	2%

Intensities in 270° c-plane

0°	2°	4°	6°	8°	10°	12°	14°	16°	18°	20°	22°	24°	26°	28°	30°	32°	34°	36°	38°
2107	2096	2063	1996	1898	1777	1641	1490	1318	1132	942	759	585	428	294	197	133	90	63	46
100%	99%	98%	95%	90%	84%	78%	71%	63%	54%	45%	36%	28%	20%	14%	9%	6%	4%	3%	2%

Beam angle 50%	Field angle 10%	Cutoff angle 2,5%	Intensity ratio in 120° cone	Intensity ratio in 90° cone
37.3°	58.2°	72.3°	99.3%	97.6%

THIS PAGE INTENTIONALLY LEFT BLANK