

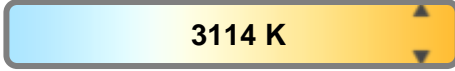
Light efficiency:



Light quality:



Color temperature:



Output: 1070 lm

Peak: 3787 cd

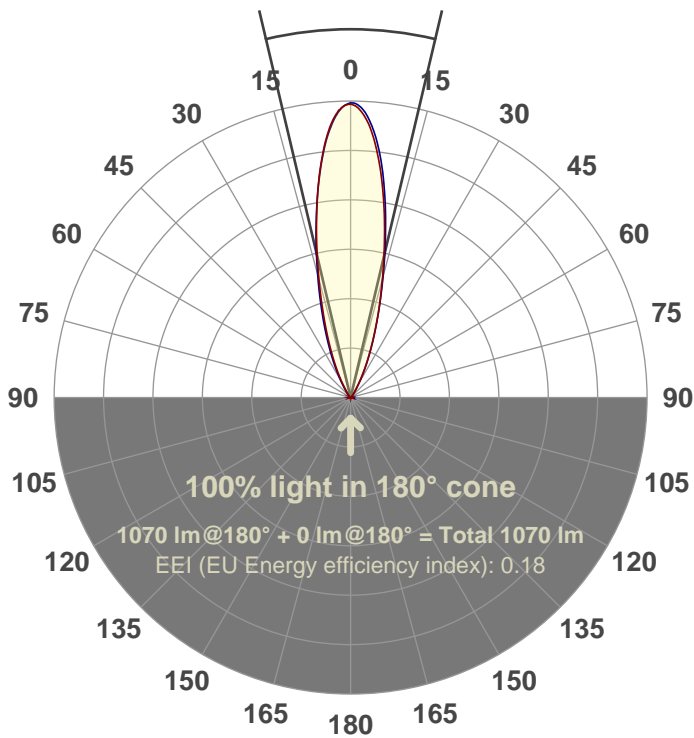
Power: 14.7 W

PF: 0.97



Beam angle

26.6°



Test number:

GR-CZ14-NF-RD-91A

Luminaire Model:

GR-CZ14-NF-RD-91A

Date and time:

7/5/2017 11:20:57 AM

Description:

350 mA V6

LUM: 1070

PPF: 18.1

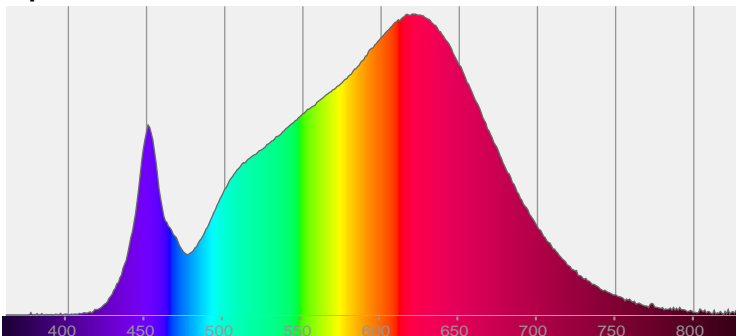


CIE 1931

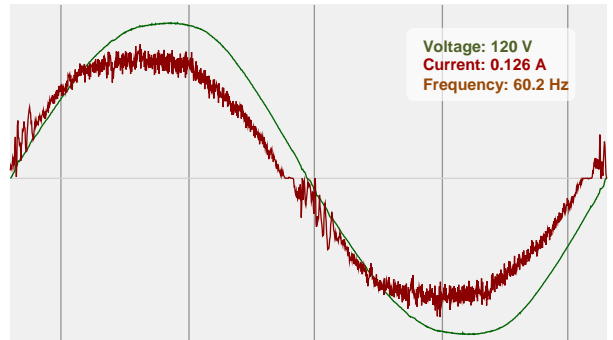
x: 0.429

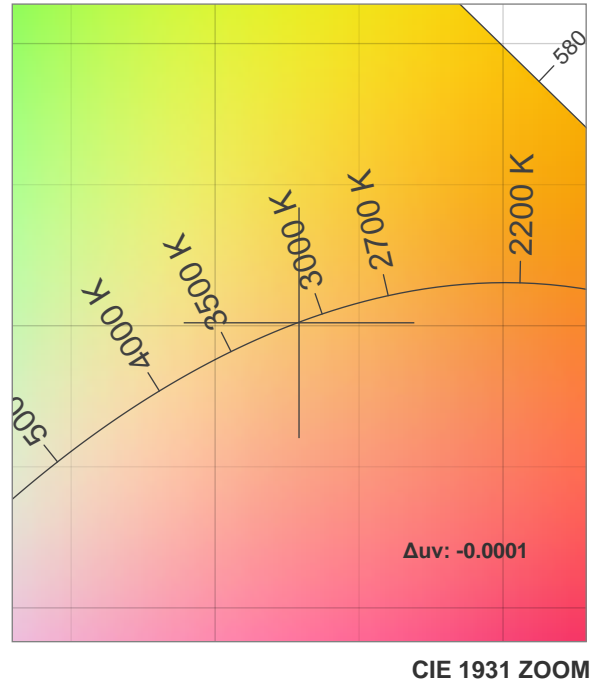
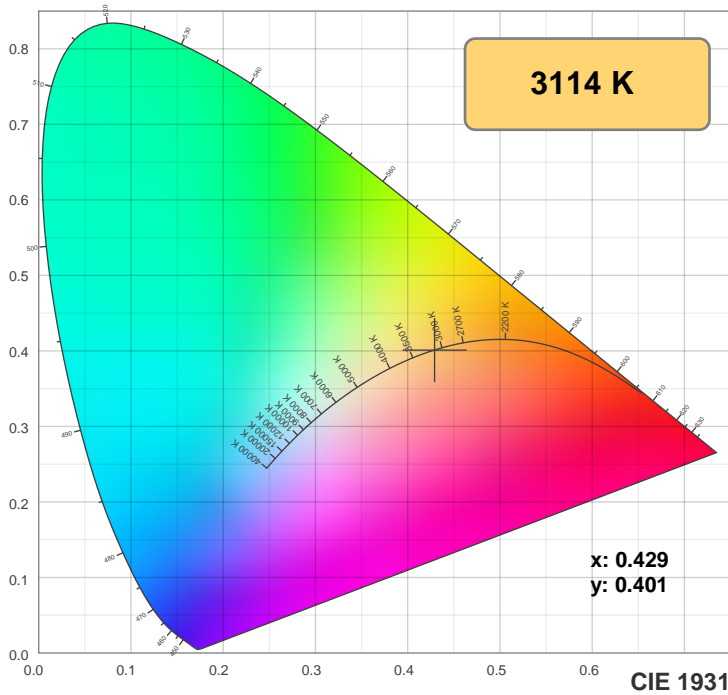
y: 0.401

Spectra

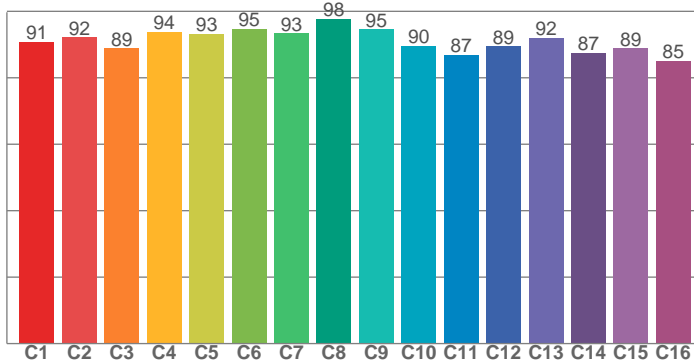


Power

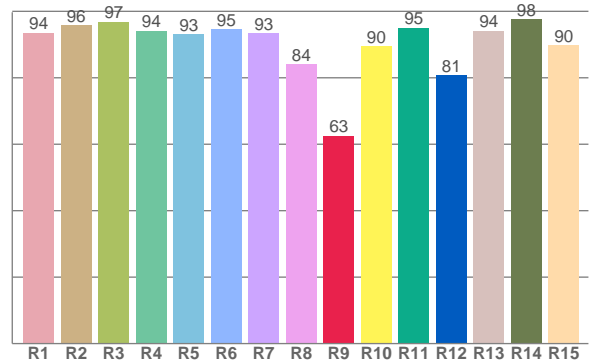




**TM30: 91.2**



**CRI: 93.2 (R1-R8)**



CRI R values, only R1-R8 are used to calculate final CRI value

R1	R2	R3	R4	R5	R6	R7	R8	R9	R10	R11	R12	R13	R14	R15
93.6	95.8	96.8	94.1	93.2	94.7	93.3	84.1	62.6	89.5	95.1	80.8	94.1	97.6	89.8

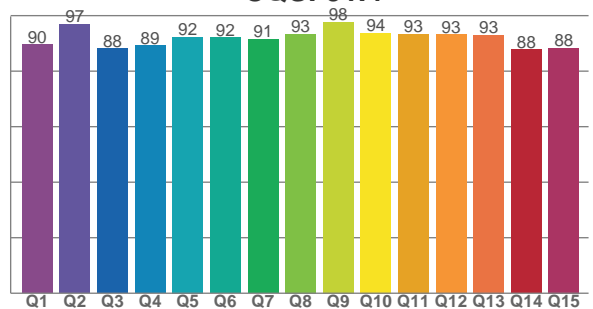
TM30 C values, 16 binned values out of total of 99 C values

C1	C2	C3	C4	C5	C6	C7	C8	C9	C10	C11	C12	C13	C14	C15	C16
90.8	92.1	88.9	93.7	93.3	94.7	93.4	97.8	94.6	89.6	87.0	89.4	92.1	87.4	88.8	85.0

CQS Q values

Q1	Q2	Q3	Q4	Q5	Q6	Q7	Q8	Q9	Q10	Q11	Q12	Q13	Q14	Q15
89.6	96.9	88.2	89.2	92.3	92.1	91.4	93.4	97.8	93.8	93.5	93.2	93.1	87.8	88.3

**CQS: 91.4**



## Color parameters

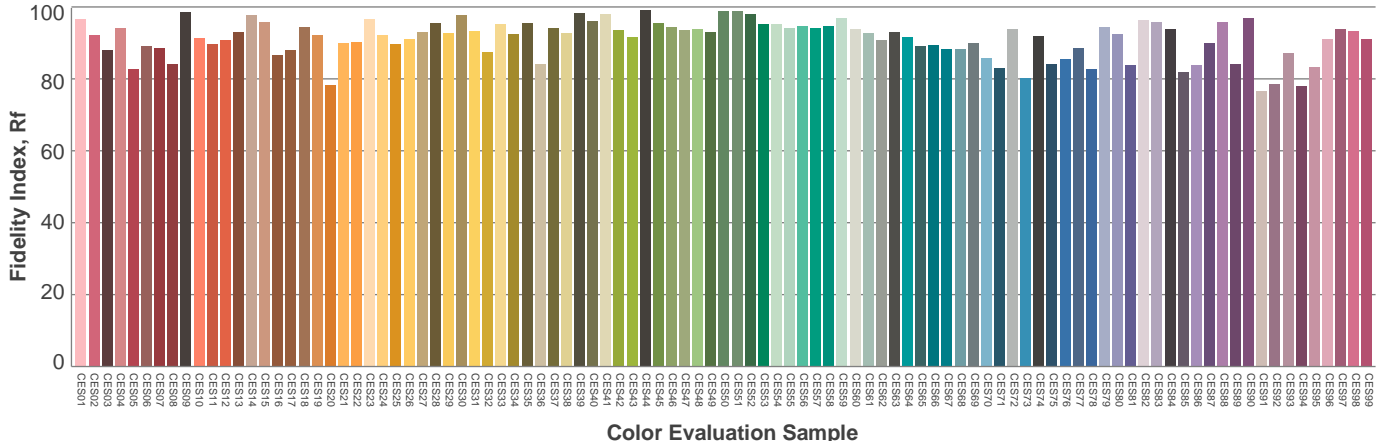
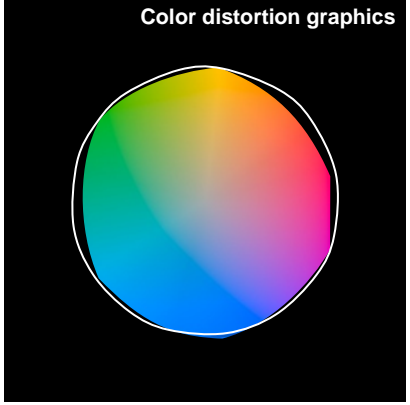
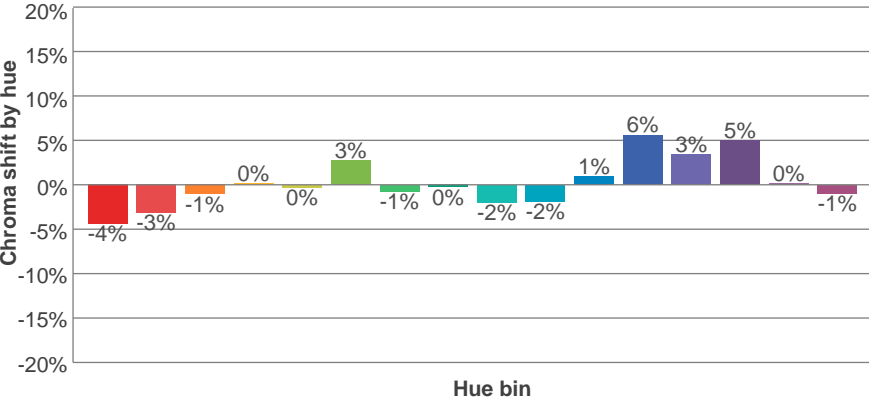
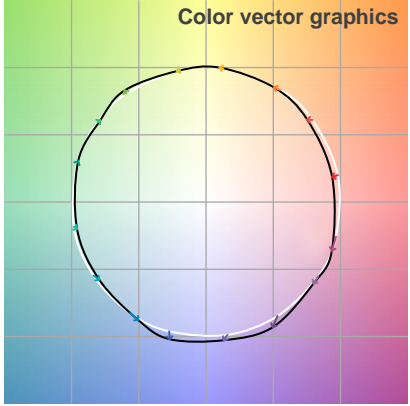
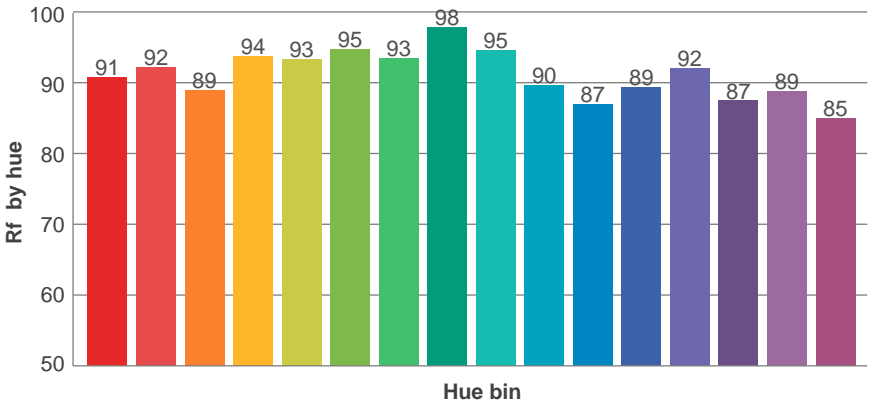
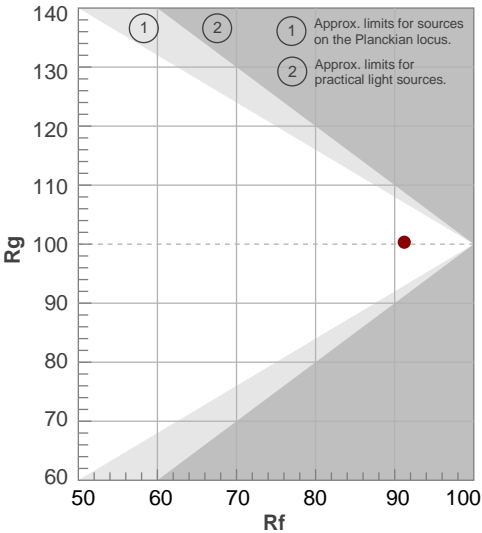
Color temperature	Color rendering index	Red component	Color fidelity	Color gamut	Color quality scale	Color coordinate cie 1931	Color coordinate cie 1931	Color coordinate	Color coordinate	Color deviation from black body
CCT	CRI	CRI R9	TM30 Rf	TM30 Rg	CQS	x	y	u	v	Δuv
3114 K	93.2	62.6	91.2	100.3	91.4	0.429	0.401	0.247	0.346	-0.0001

# TM30 details

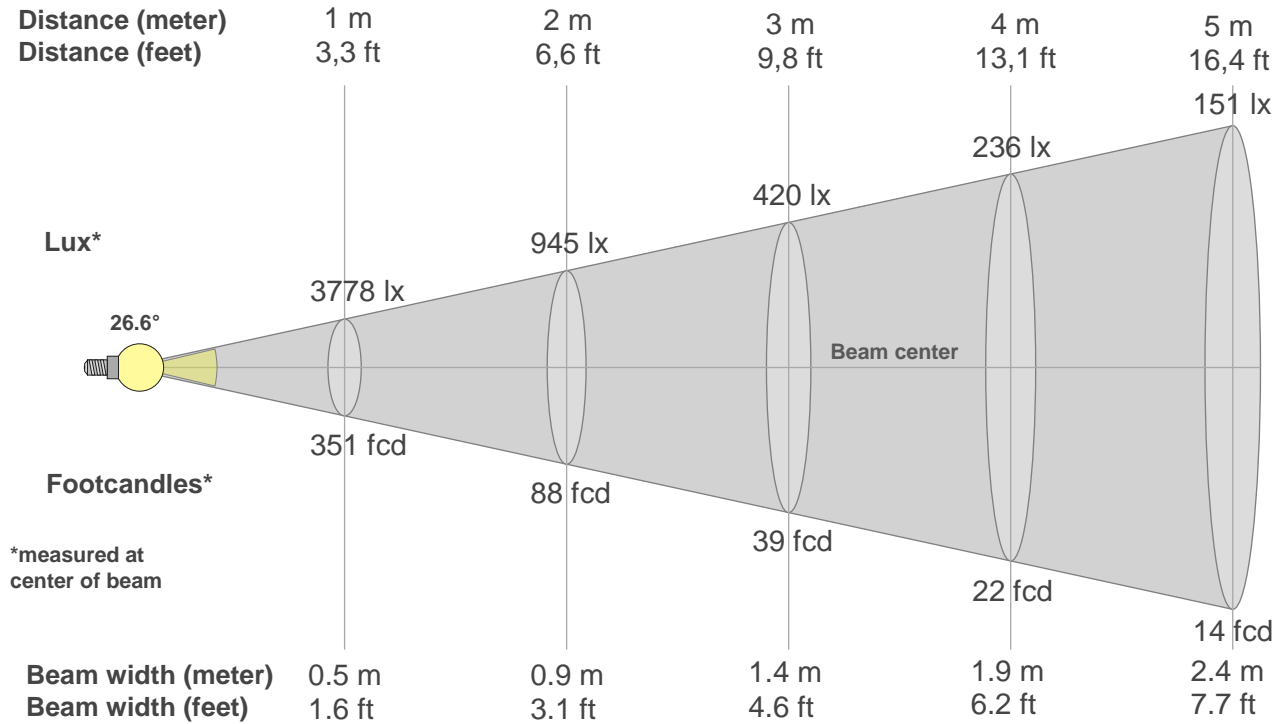
**Rf 91.2**  
Fidelity index Rf

**Rg 100.3**  
Gammut index Rg

Hue Bin	R <sub>f</sub>	Graphic shifts (%)	
		Chroma	Hue
1	91	-4%	-1%
2	92	-3%	2%
3	89	-1%	5%
4	94	0%	3%
5	93	0%	3%
6	95	3%	0%
7	93	-1%	-2%
8	98	0%	-1%
9	95	-2%	2%
10	90	-2%	5%
11	87	1%	8%
12	89	6%	1%
13	92	3%	-3%
14	87	5%	-8%
15	89	0%	-6%
16	85	-1%	-11%



## Beam details



### Beam intensities from 1-20m

1m	2m	3m	4m	5m	6m	7m	8m	9m	10m	11m	12m	13m	14m	15m	16m	17m	18m	19m	20m
3.3ft	6.6ft	9.8ft	13.1ft	16.4ft	19.7ft	23ft	26.2ft	29.5ft	32.8ft	36.1ft	39.4ft	42.7ft	45.9ft	49.2ft	52.5ft	55.8ft	59.1ft	62.3ft	65.6ft
3778lx	945lx	420lx	236lx	151lx	105lx	77lx	59lx	47lx	38lx	31lx	26lx	22lx	19lx	17lx	15lx	13lx	12lx	10lx	9lx
351fcd	87.8fcd	39fcd	21.9fcd	14fcd	9.8fcd	7.2fcd	5.5fcd	4.3fcd	3.5fcd	2.9fcd	2.4fcd	2.1fcd	1.8fcd	1.6fcd	1.4fcd	1.2fcd	1.1fcd	1fcd	0.9fcd

### Intensities in 0° c-plane

0°	2°	4°	6°	8°	10°	12°	14°	16°	18°	20°	22°	24°	26°	28°	30°	32°	34°	36°	38°
3778	3715	3534	3244	2886	2490	2105	1737	1417	1136	904	707	545	407	293	206	144	102	74	56
100%	98%	94%	86%	76%	66%	56%	46%	38%	30%	24%	19%	14%	11%	8%	5%	4%	3%	2%	1%

### Intensities in 90° c-plane

0°	2°	4°	6°	8°	10°	12°	14°	16°	18°	20°	22°	24°	26°	28°	30°	32°	34°	36°	38°
3778	3707	3509	3224	2872	2501	2137	1794	1489	1221	990	791	625	482	361	262	186	132	97	72
100%	98%	93%	85%	76%	66%	57%	47%	39%	32%	26%	21%	17%	13%	10%	7%	5%	4%	3%	2%

### Intensities in 180° c-plane

0°	2°	4°	6°	8°	10°	12°	14°	16°	18°	20°	22°	24°	26°	28°	30°	32°	34°	36°	38°
3778	3688	3496	3201	2852	2475	2094	1746	1428	1161	930	737	571	433	315	222	155	110	81	60
100%	98%	93%	85%	75%	66%	55%	46%	38%	31%	25%	20%	15%	11%	8%	6%	4%	3%	2%	2%

### Intensities in 270° c-plane

0°	2°	4°	6°	8°	10°	12°	14°	16°	18°	20°	22°	24°	26°	28°	30°	32°	34°	36°	38°
3778	3735	3558	3288	2946	2555	2157	1787	1451	1167	920	716	550	410	294	208	148	108	80	60
100%	99%	94%	87%	78%	68%	57%	47%	38%	31%	24%	19%	15%	11%	8%	6%	4%	3%	2%	2%

Beam angle 50%	Field angle 10%	Cutoff angle 2,5%	Intensity ratio in 120° cone	Intensity ratio in 90° cone
26.6°	53.8°	70.2°	99.5%	97.9%



THIS PAGE INTENTIONALLY LEFT BLANK