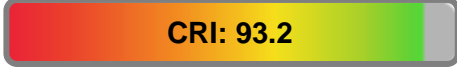


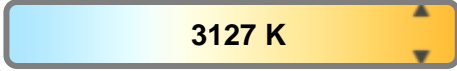
Light efficiency:



Light quality:



Color temperature:

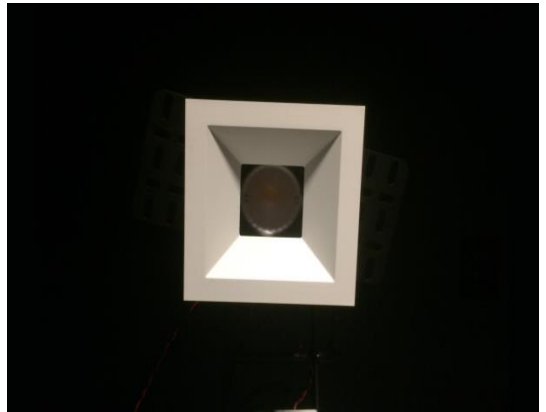


Output: 1003 lm

Peak: 4123 cd

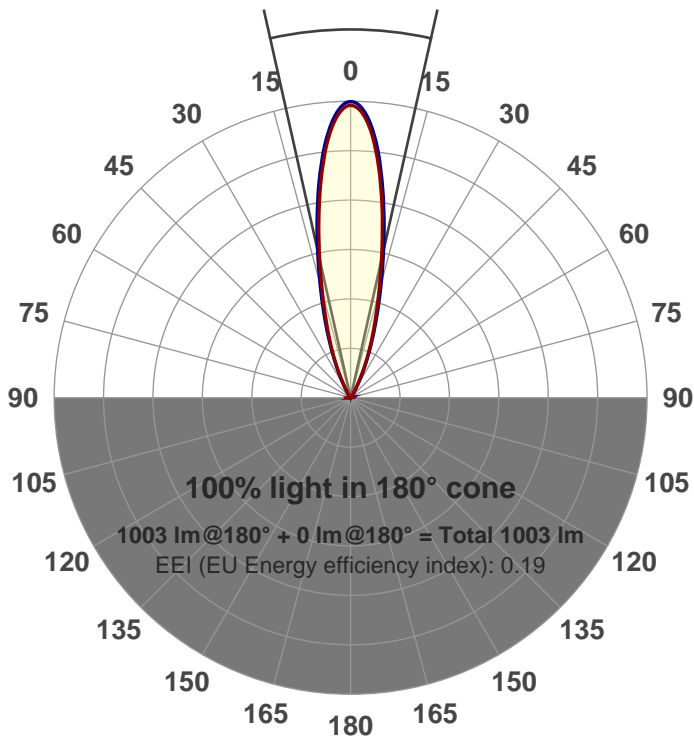
Power: 14.7 W

PF: 0.97



Beam angle

25.2°



Product name:

GR-CZ14-NF-SQ-91A revF

Item number:

GR-CZ14-NF-SQ-91A revF

Date and time:

1/17/2018 12:46:31 PM

Description:

350mA revF

LUM: 1003

PPF: 17.3

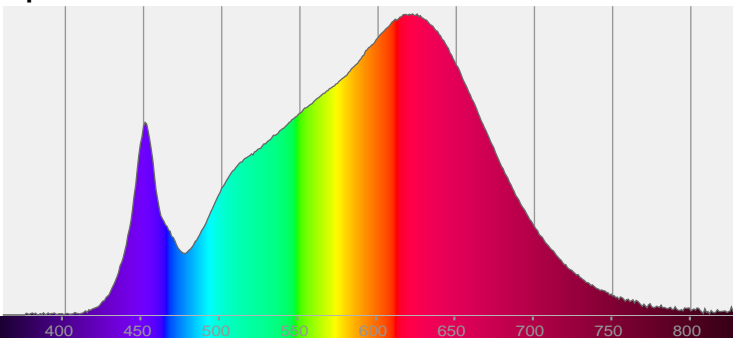


CIE 1931

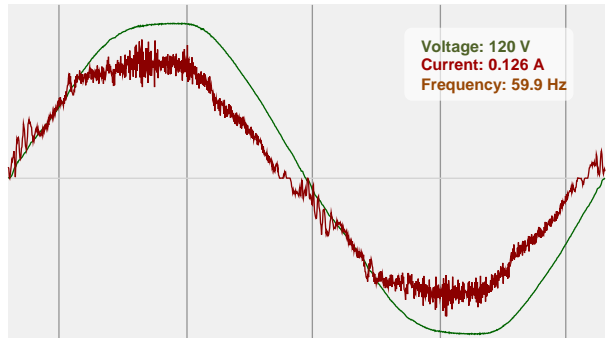
x: 0.428

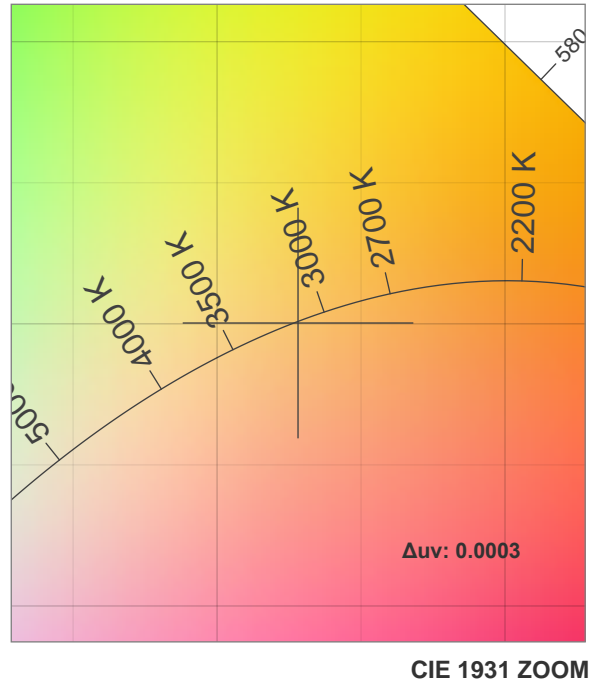
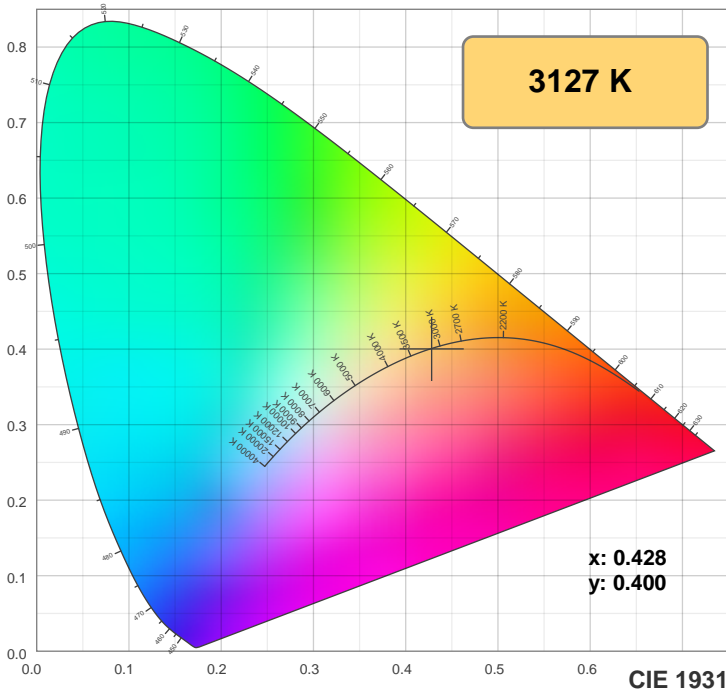
y: 0.400

Spectra

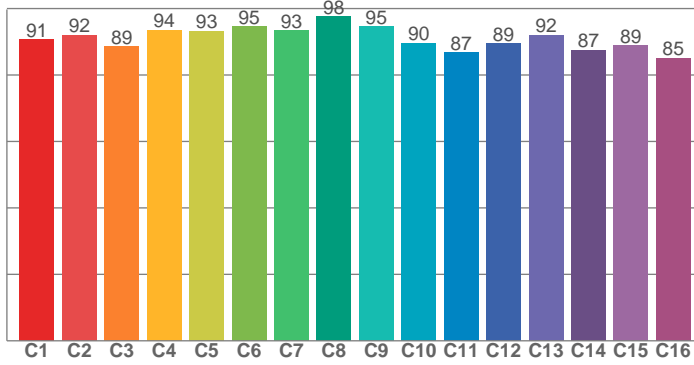


Power

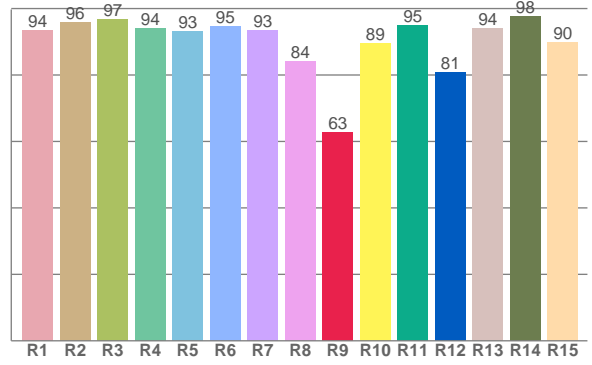




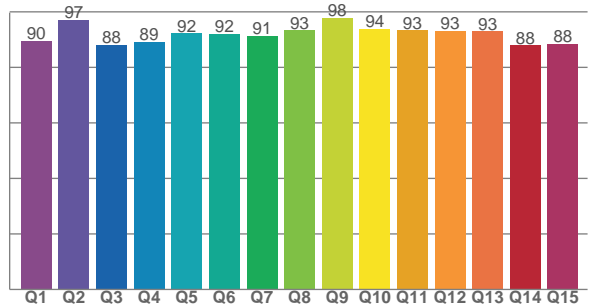
TM30: 91.2



CRI: 93.2 (R1-R8)



CQS: 91.3



CRI R values, only R1-R8 are used to calculate final CRI value

R1	R2	R3	R4	R5	R6	R7	R8	R9	R10	R11	R12	R13	R14	R15
93.5	95.8	96.8	94.1	93.2	94.6	93.3	84.2	62.7	89.5	94.9	80.9	94.1	97.6	89.8

TM30 C values, 16 binned values out of total of 99 C values

C1	C2	C3	C4	C5	C6	C7	C8	C9	C10	C11	C12	C13	C14	C15	C16
90.8	92.0	88.6	93.6	93.3	94.5	93.4	97.6	94.6	89.6	86.9	89.4	92.1	87.5	88.9	85.1

CQS Q values

Q1	Q2	Q3	Q4	Q5	Q6	Q7	Q8	Q9	Q10	Q11	Q12	Q13	Q14	Q15
89.6	97.0	88.1	89.0	92.2	92.0	91.3	93.3	97.8	93.7	93.3	93.0	93.0	87.9	88.3

Color parameters

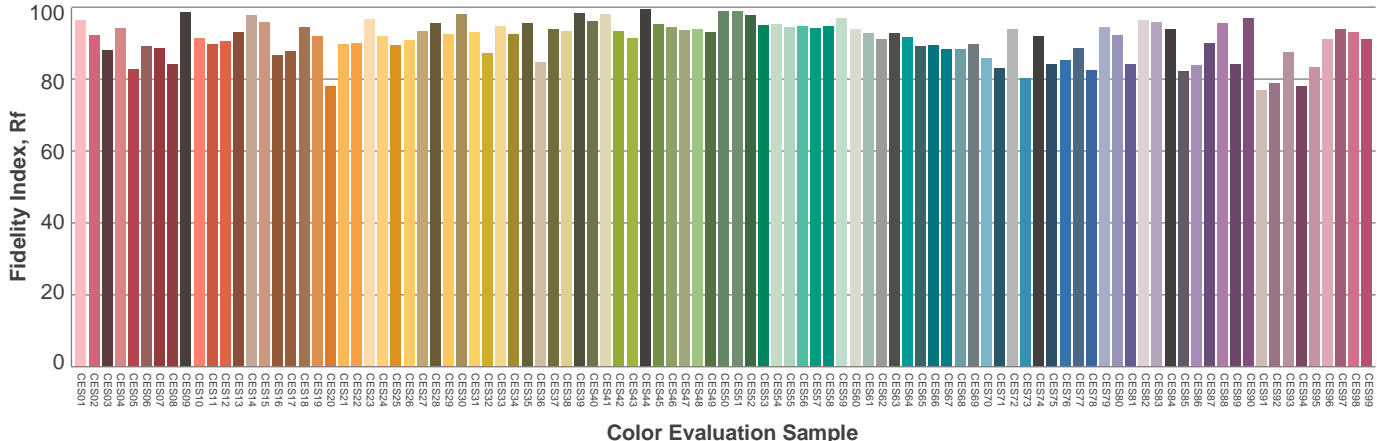
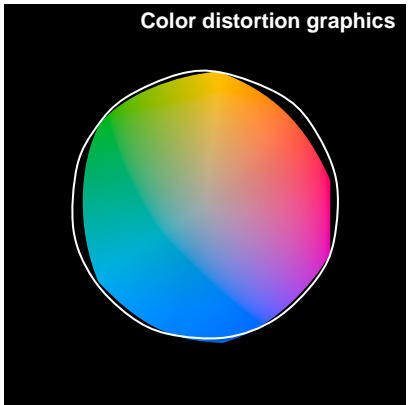
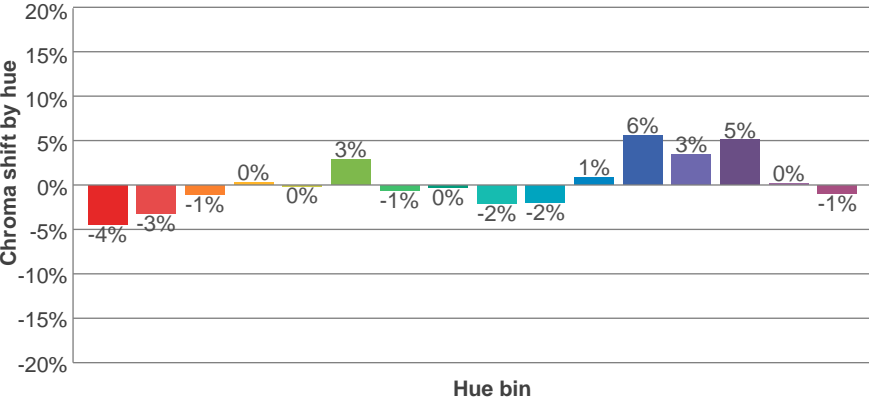
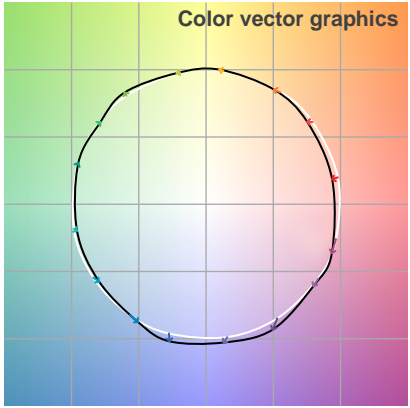
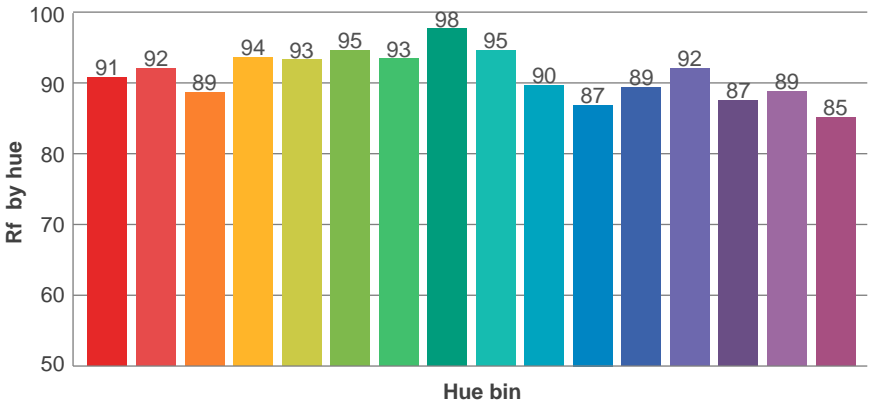
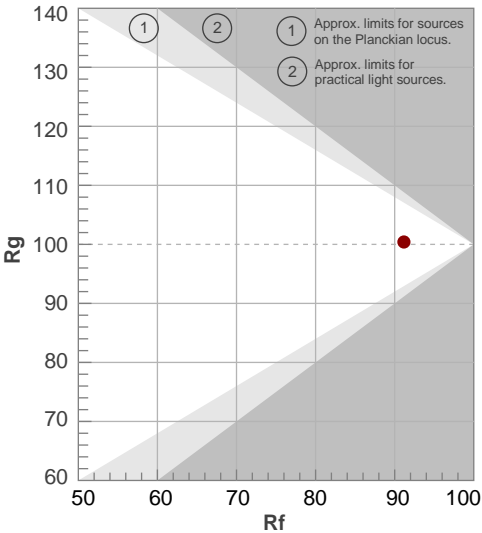
Color temperature	Color rendering index	Red component	Color fidelity	Color gamut	Color quality scale	Color coordinate cie 1931	Color coordinate cie 1931	Color coordinate	Color coordinate	Color diviation from black body
CCT	CRI	CRI R9	TM30 Rf	TM30 Rg	CQS	x	y	u	v	Δuv
3127 K	93.2	62.7	91.2	100.4	91.3	0.428	0.400	0.246	0.346	0.0003

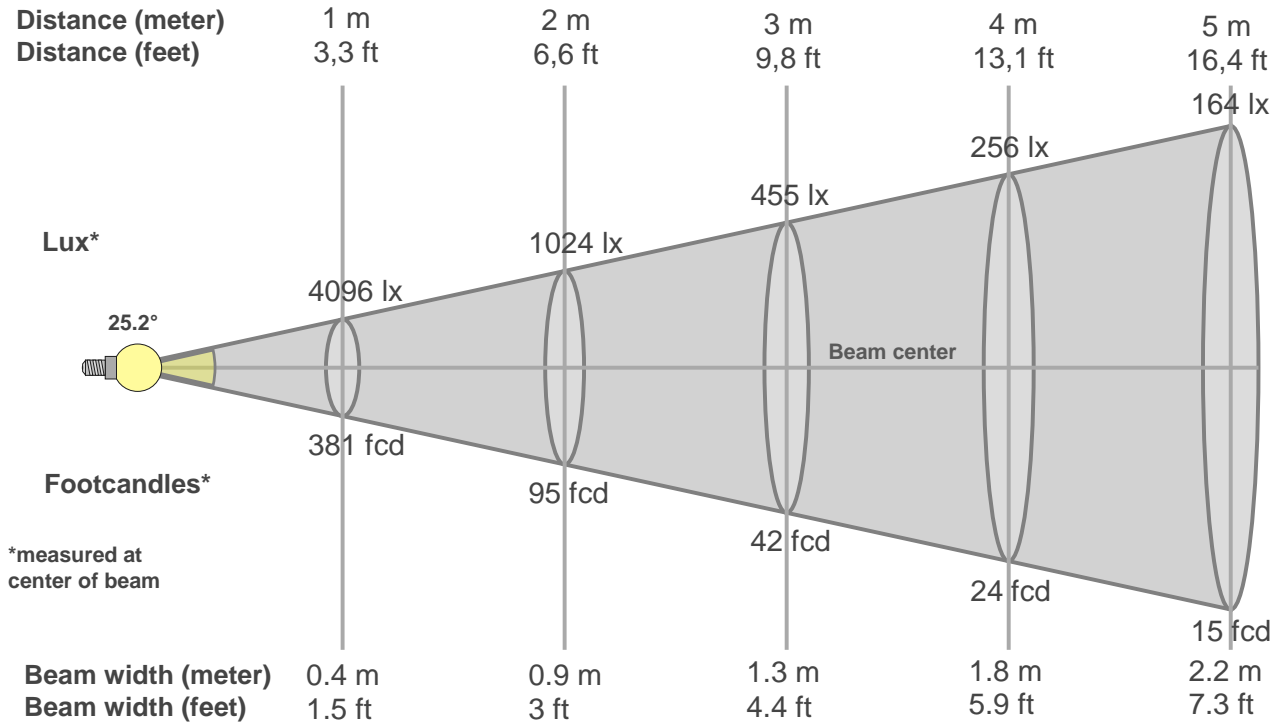
TM30 details

Rf 91.2
Fidelity index Rf

Rg 100.4
Gammut index Rg

Hue Bin	R _f	Graphic shifts (%)	
		Chroma	Hue
1	91	-4%	-1%
2	92	-3%	2%
3	89	-1%	5%
4	94	0%	3%
5	93	0%	3%
6	95	3%	0%
7	93	-1%	-3%
8	98	0%	-1%
9	95	-2%	2%
10	90	-2%	5%
11	87	1%	8%
12	89	6%	2%
13	92	3%	-3%
14	87	5%	-7%
15	89	0%	-6%
16	85	-1%	-11%





Beam intensities from 1-20m

1m	2m	3m	4m	5m	6m	7m	8m	9m	10m	11m	12m	13m	14m	15m	16m	17m	18m	19m	20m
3.3ft	6.6ft	9.8ft	13.1ft	16.4ft	19.7ft	23ft	26.2ft	29.5ft	32.8ft	36.1ft	39.4ft	42.7ft	45.9ft	49.2ft	52.5ft	55.8ft	59.1ft	62.3ft	65.6ft
4096lx	1024lx	455lx	256lx	164lx	114lx	84lx	64lx	51lx	41lx	34lx	28lx	24lx	21lx	18lx	16lx	14lx	13lx	11lx	10lx
380.5fcd	95.1fcd	42.3fcd	23.8fcd	15.2fcd	10.6fcd	7.8fcd	5.9fcd	4.7fcd	3.8fcd	3.1fcd	2.6fcd	2.3fcd	1.9fcd	1.7fcd	1.5fcd	1.3fcd	1.2fcd	1.1fcd	1fcd

Intensities in 0° c-plane

0°	2°	4°	6°	8°	10°	12°	14°	16°	18°	20°	22°	24°	26°	28°	30°	32°	34°	36°	38°
4096	3984	3762	3429	3012	2557	2116	1717	1371	1081	841	642	465	313	191	108	64	42	29	22
100%	97%	92%	84%	74%	62%	52%	42%	33%	26%	21%	16%	11%	8%	5%	3%	2%	1%	1%	1%

Intensities in 90° c-plane

0°	2°	4°	6°	8°	10°	12°	14°	16°	18°	20°	22°	24°	26°	28°	30°	32°	34°	36°	38°
4096	4042	3837	3523	3116	2681	2250	1846	1486	1177	919	698	511	356	233	151	99	66	44	30
100%	99%	94%	86%	76%	65%	55%	45%	36%	29%	22%	17%	12%	9%	6%	4%	2%	2%	1%	1%

Intensities in 180° c-plane

0°	2°	4°	6°	8°	10°	12°	14°	16°	18°	20°	22°	24°	26°	28°	30°	32°	34°	36°	38°
4096	4014	3778	3428	3010	2559	2110	1708	1373	1092	856	653	473	317	198	119	71	44	28	21
100%	98%	92%	84%	73%	62%	52%	42%	34%	27%	21%	16%	12%	8%	5%	3%	2%	1%	1%	1%

Intensities in 270° c-plane

0°	2°	4°	6°	8°	10°	12°	14°	16°	18°	20°	22°	24°	26°	28°	30°	32°	34°	36°	38°
4096	4056	3860	3532	3116	2679	2248	1841	1479	1178	922	702	515	360	238	158	105	69	45	30
100%	99%	94%	86%	76%	65%	55%	45%	36%	29%	23%	17%	13%	9%	6%	4%	3%	2%	1%	1%

Beam angle 50%	Field angle 10%	Cutoff angle 2,5%	Intensity ratio in 120° cone	Intensity ratio in 90° cone
25.2°	50°	62.4°	99.4%	98.4%

THIS PAGE INTENTIONALLY LEFT BLANK