

Light efficiency:



Light quality:



Color temperature:

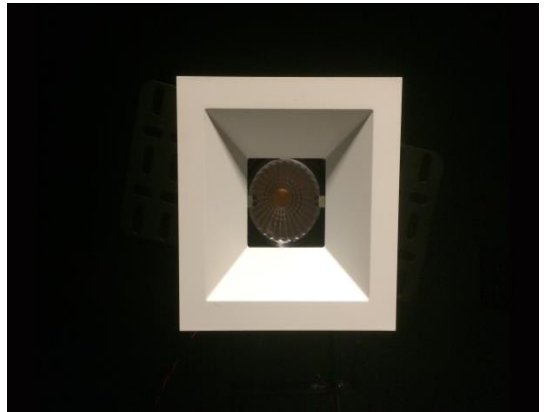


Output: 1025 lm

Peak: 5064 cd

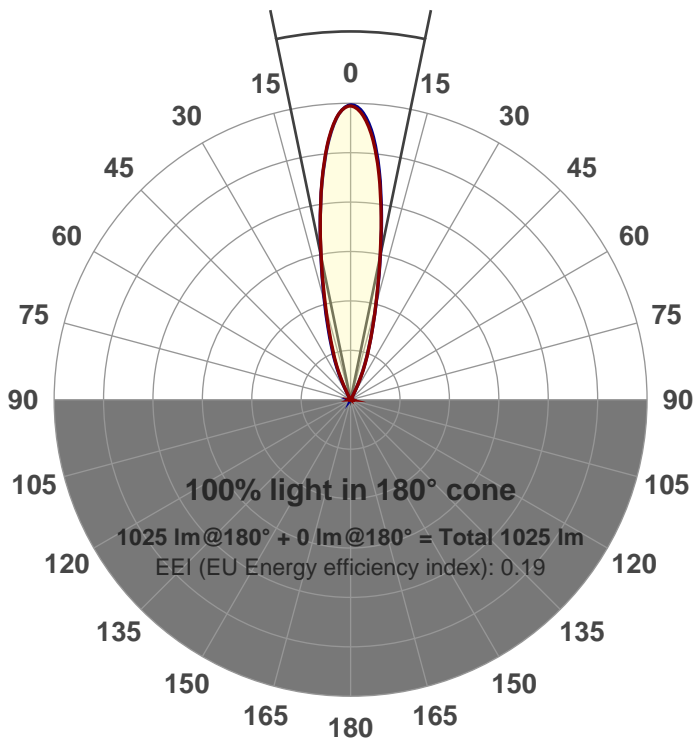
Power: 14.7 W

PF: 0.97



Beam angle

23.3°



Product name:

GR-CZ14-NF-SQ revF

Item number:

GR-CZ14-NF-SQ revF

Date and time:

1/17/2018 12:52:16 PM

Description:

350mA revF

LUM: 1025

PPF: 17.5

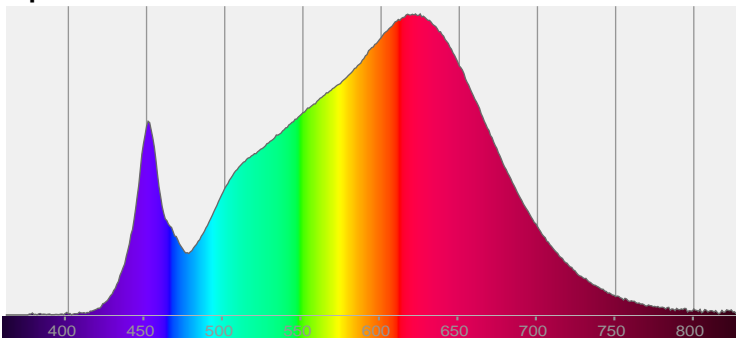


CIE 1931

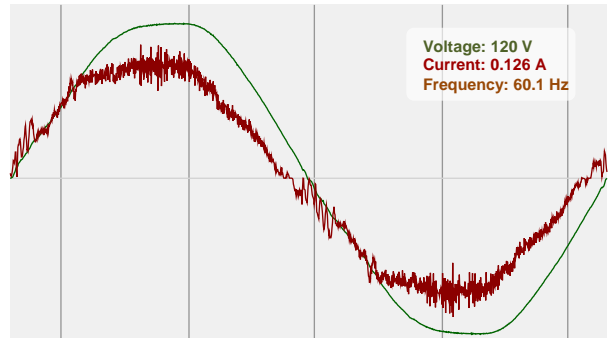
x: 0.428

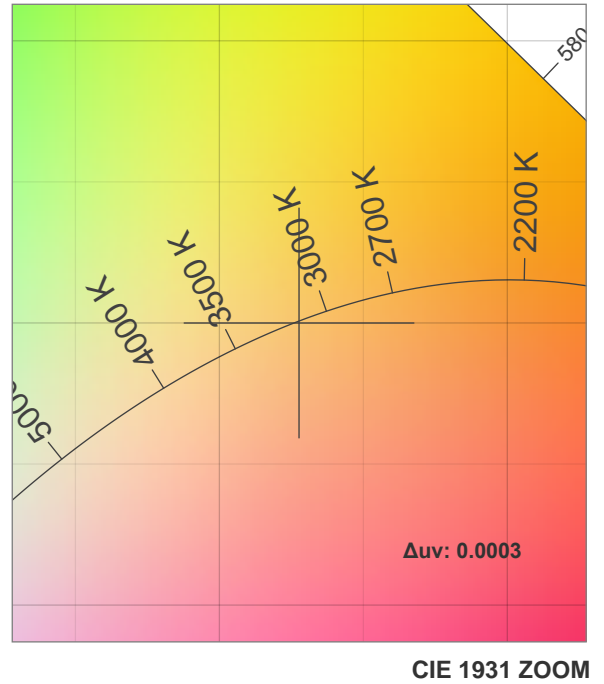
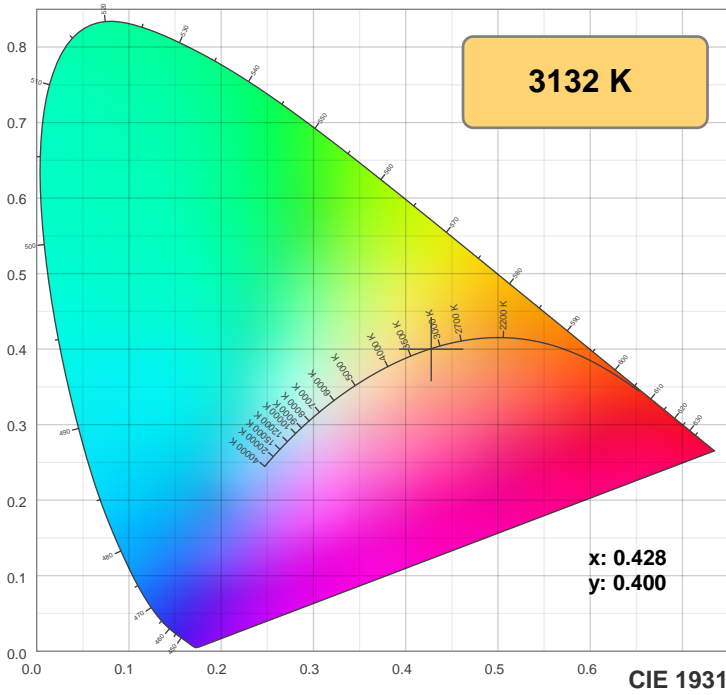
y: 0.400

Spectra

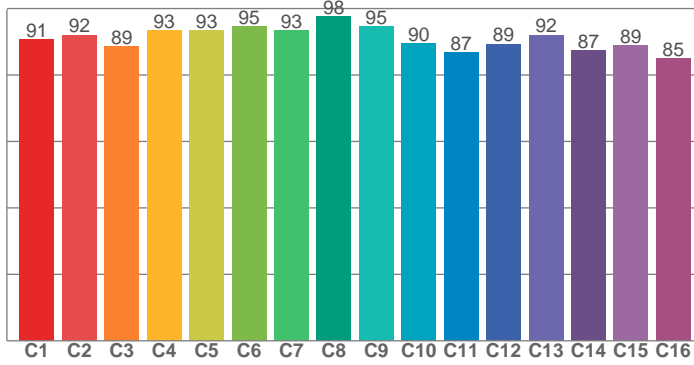


Power

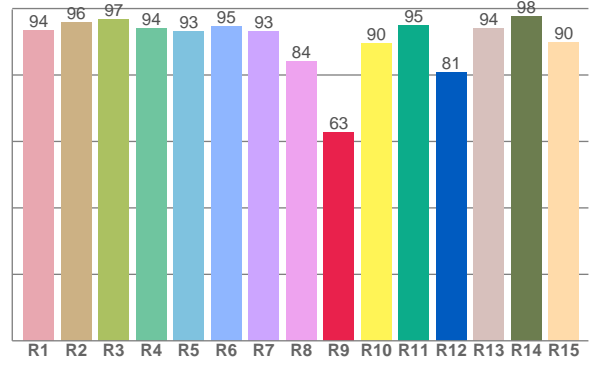




TM30: 91.1



CRI: 93.2 (R1-R8)



CRI R values, only R1-R8 are used to calculate final CRI value

R1	R2	R3	R4	R5	R6	R7	R8	R9	R10	R11	R12	R13	R14	R15
93.5	95.9	96.8	94.0	93.2	94.6	93.3	84.1	62.6	89.6	94.9	80.8	94.1	97.6	89.8

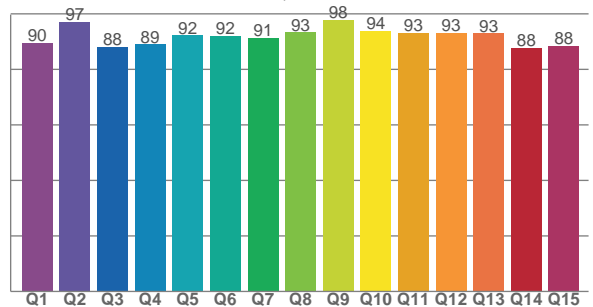
TM30 C values, 16 binned values out of total of 99 C values

C1	C2	C3	C4	C5	C6	C7	C8	C9	C10	C11	C12	C13	C14	C15	C16
90.7	92.0	88.7	93.4	93.4	94.6	93.4	97.6	94.6	89.5	86.8	89.4	92.1	87.5	88.8	85.0

CQS Q values

Q1	Q2	Q3	Q4	Q5	Q6	Q7	Q8	Q9	Q10	Q11	Q12	Q13	Q14	Q15
89.6	97.0	88.0	89.0	92.2	92.0	91.3	93.3	97.8	93.7	93.2	93.0	92.9	87.9	88.3

CQS: 91.3



Color parameters

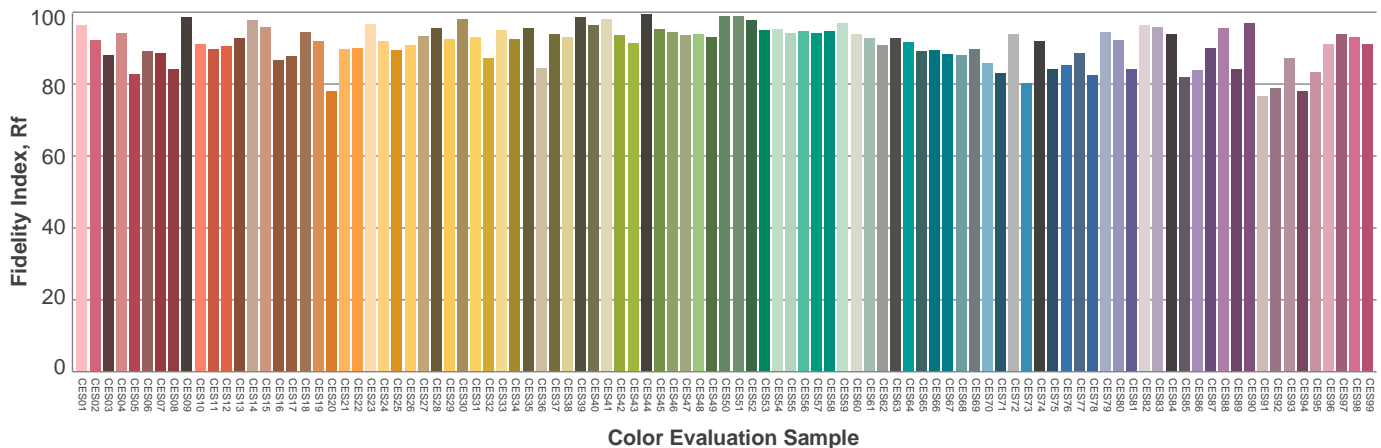
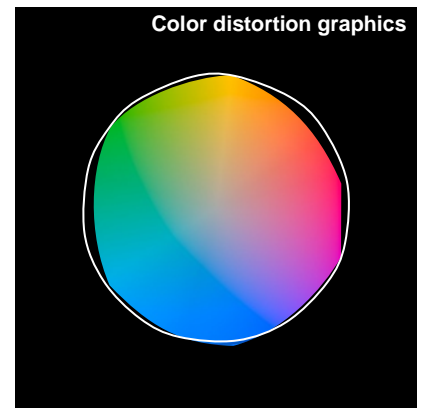
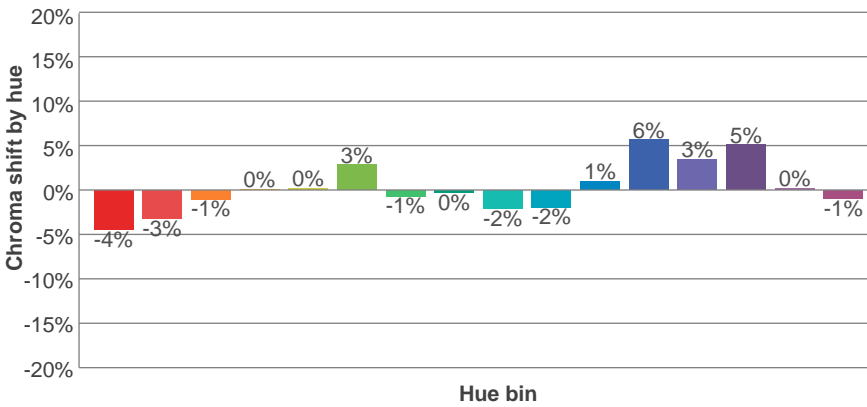
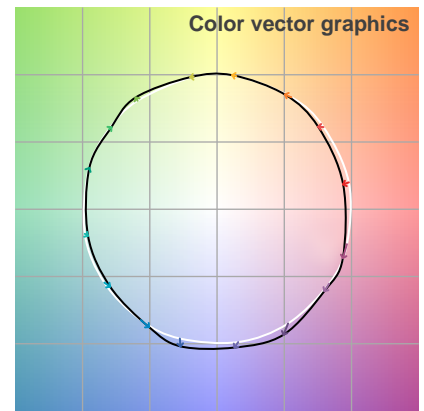
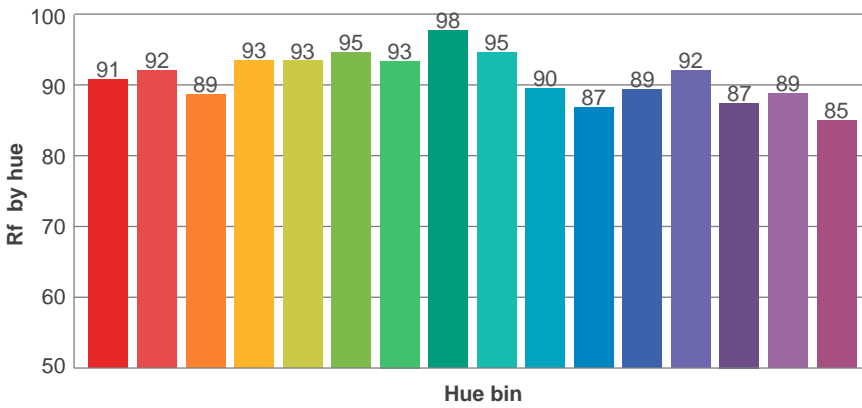
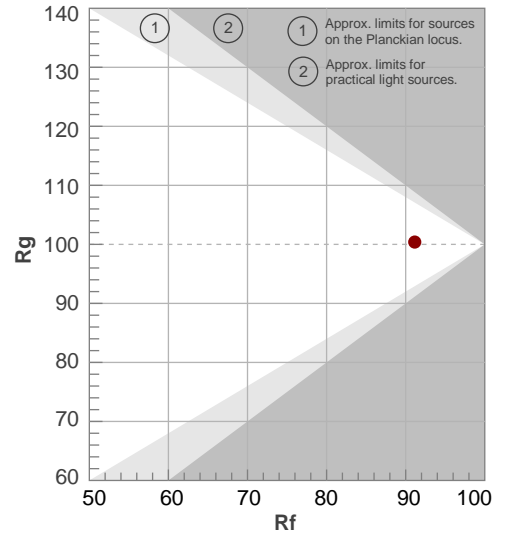
Color temperature	Color rendering index	Red component	Color fidelity	Color gamut	Color quality scale	Color coordinate cie 1931	Color coordinate cie 1931	Color coordinate	Color coordinate	Color deviation from black body
CCT	CRI	CRI R9	TM30 Rf	TM30 Rg	CQS	x	y	u	v	Δuv
3132 K	93.2	62.6	91.1	100.4	91.3	0.428	0.400	0.246	0.346	0.0003

TM30 details

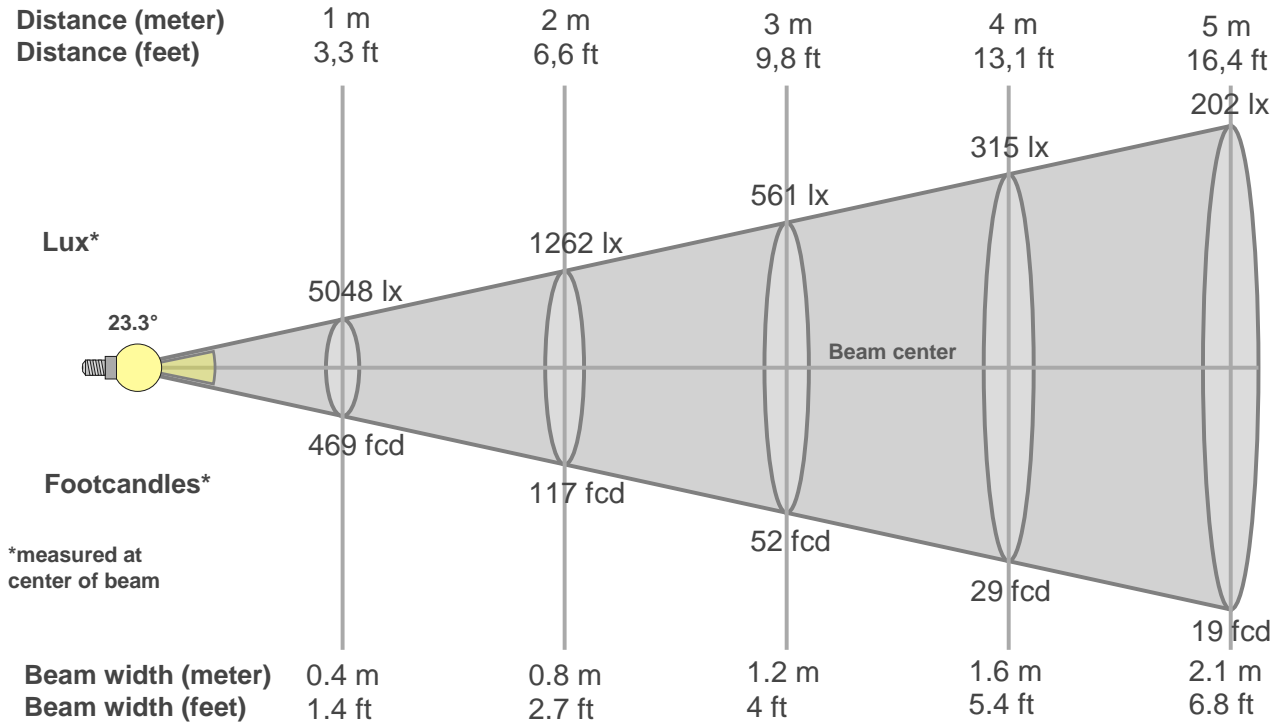
Rf 91.1
Fidelity index Rf

Rg 100.4
Gammut index Rg

Hue Bin	R _f	Graphic shifts (%)	
		Chroma	Hue
1	91	-4%	-1%
2	92	-3%	2%
3	89	-1%	5%
4	93	0%	3%
5	93	0%	2%
6	95	3%	0%
7	93	-1%	-3%
8	98	0%	-1%
9	95	-2%	2%
10	90	-2%	5%
11	87	1%	8%
12	89	6%	2%
13	92	3%	-3%
14	87	5%	-7%
15	89	0%	-6%
16	85	-1%	-11%



Beam details



Beam intensities from 1-20m

1m	2m	3m	4m	5m	6m	7m	8m	9m	10m	11m	12m	13m	14m	15m	16m	17m	18m	19m	20m
3.3ft	6.6ft	9.8ft	13.1ft	16.4ft	19.7ft	23ft	26.2ft	29.5ft	32.8ft	36.1ft	39.4ft	42.7ft	45.9ft	49.2ft	52.5ft	55.8ft	59.1ft	62.3ft	65.6ft
5048lx	1262lx	561lx	315lx	202lx	140lx	103lx	79lx	62lx	50lx	42lx	35lx	30lx	26lx	22lx	20lx	17lx	16lx	14lx	13lx
469fcd	117.2fcd	52.1fcd	29.3fcd	18.8fcd	13fcd	9.6fcd	7.3fcd	5.8fcd	4.7fcd	3.9fcd	3.3fcd	2.8fcd	2.4fcd	2.1fcd	1.8fcd	1.6fcd	1.4fcd	1.3fcd	1.2fcd

Intensities in 0° c-plane

0°	2°	4°	6°	8°	10°	12°	14°	16°	18°	20°	22°	24°	26°	28°	30°	32°	34°	36°	38°
5048	4927	4632	4183	3623	3005	2414	1904	1484	1146	874	657	442	244	97	21	11	10	9	6
100%	98%	92%	83%	72%	60%	48%	38%	29%	23%	17%	13%	9%	5%	2%	0%	0%	0%	0%	0%

Intensities in 90° c-plane

0°	2°	4°	6°	8°	10°	12°	14°	16°	18°	20°	22°	24°	26°	28°	30°	32°	34°	36°	38°
5048	4926	4616	4164	3613	3010	2438	1953	1548	1215	941	720	504	297	131	31	9	7	6	5
100%	98%	91%	82%	72%	60%	48%	39%	31%	24%	19%	14%	10%	6%	3%	1%	0%	0%	0%	0%

Intensities in 180° c-plane

0°	2°	4°	6°	8°	10°	12°	14°	16°	18°	20°	22°	24°	26°	28°	30°	32°	34°	36°	38°
5048	4930	4639	4199	3645	3028	2409	1896	1481	1149	883	661	453	255	104	25	9	8	6	5
100%	98%	92%	83%	72%	60%	48%	38%	29%	23%	17%	13%	9%	5%	2%	1%	0%	0%	0%	0%

Intensities in 270° c-plane

0°	2°	4°	6°	8°	10°	12°	14°	16°	18°	20°	22°	24°	26°	28°	30°	32°	34°	36°	38°
5048	4973	4696	4256	3691	3058	2429	1911	1483	1138	860	628	416	226	88	20	10	9	8	6
100%	99%	93%	84%	73%	61%	48%	38%	29%	23%	17%	12%	8%	4%	2%	0%	0%	0%	0%	0%

Beam angle 50%	Field angle 10%	Cutoff angle 2,5%	Intensity ratio in 120° cone	Intensity ratio in 90° cone
23.3°	47°	55.2°	99.7%	99.4%

THIS PAGE INTENTIONALLY LEFT BLANK