

Light efficiency:



Light quality:



Color temperature:



Output: 1148 lm

Peak: 5729 cd

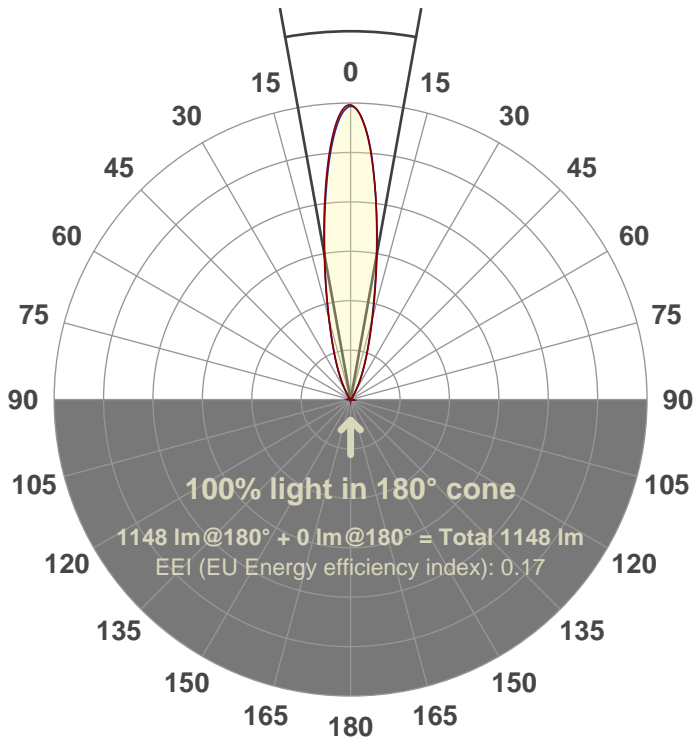
Power: 14.6 W

PF: 0.97



Beam angle

20.5°



Test number:

GR-CZ14-SP-RD-91A

Luminaire Model:

GR-CZ14-SP-RD-91A

Date and time:

7/5/2017 11:34:00 AM

Description:

350 mA V6

LUM: 1148

PPF: 19.5

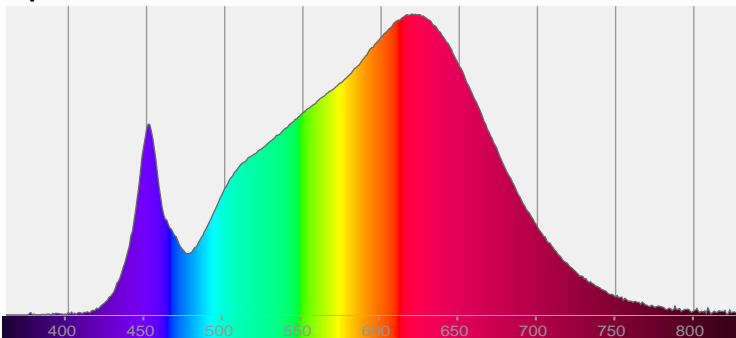


CIE 1931

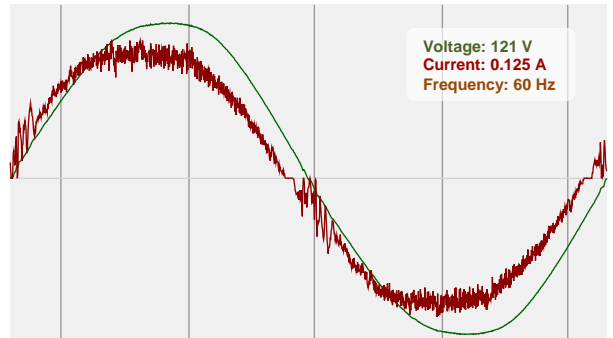
x: 0.428

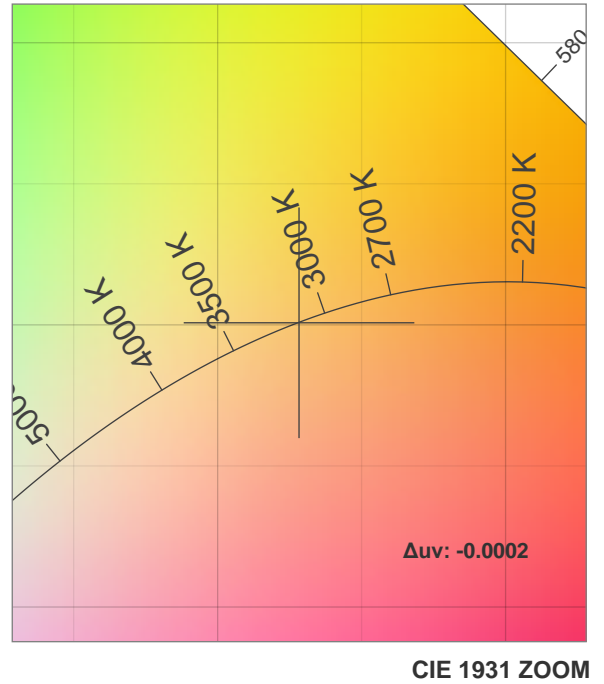
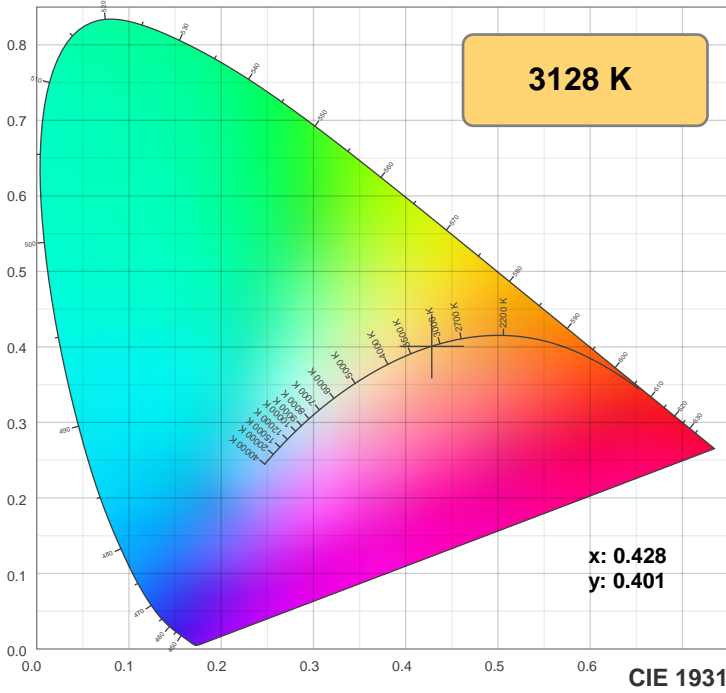
y: 0.401

Spectra

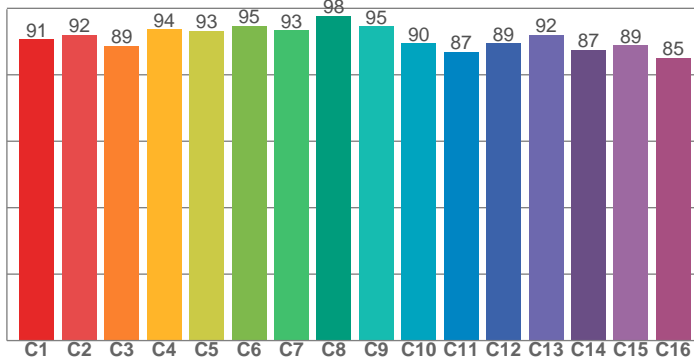


Power

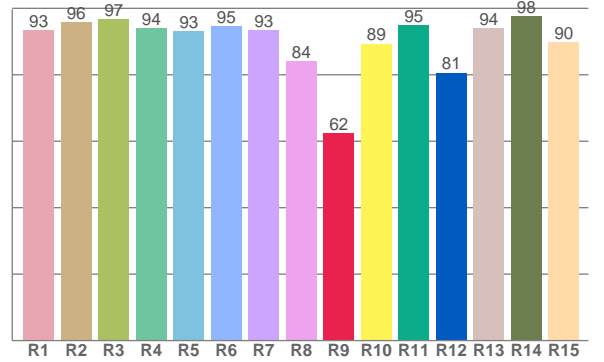




TM30: 91.2



CRI: 93.1 (R1-R8)



CRI R values, only R1-R8 are used to calculate final CRI value

R1	R2	R3	R4	R5	R6	R7	R8	R9	R10	R11	R12	R13	R14	R15
93.5	95.8	96.8	94.1	93.1	94.5	93.3	84.1	62.3	89.4	95.0	80.6	94.1	97.6	89.7

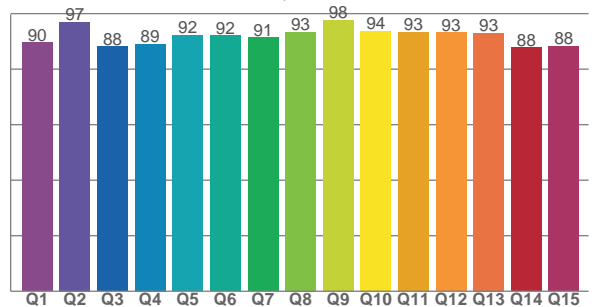
TM30 C values, 16 binned values out of total of 99 C values

C1	C2	C3	C4	C5	C6	C7	C8	C9	C10	C11	C12	C13	C14	C15	C16
90.7	92.0	88.8	93.7	93.3	94.7	93.4	97.7	94.5	89.5	86.9	89.4	92.1	87.5	88.8	85.0

CQS Q values

Q1	Q2	Q3	Q4	Q5	Q6	Q7	Q8	Q9	Q10	Q11	Q12	Q13	Q14	Q15
89.5	96.9	88.1	89.1	92.2	92.0	91.4	93.4	97.8	93.8	93.4	93.1	93.0	87.8	88.2

CQS: 91.4



Color parameters

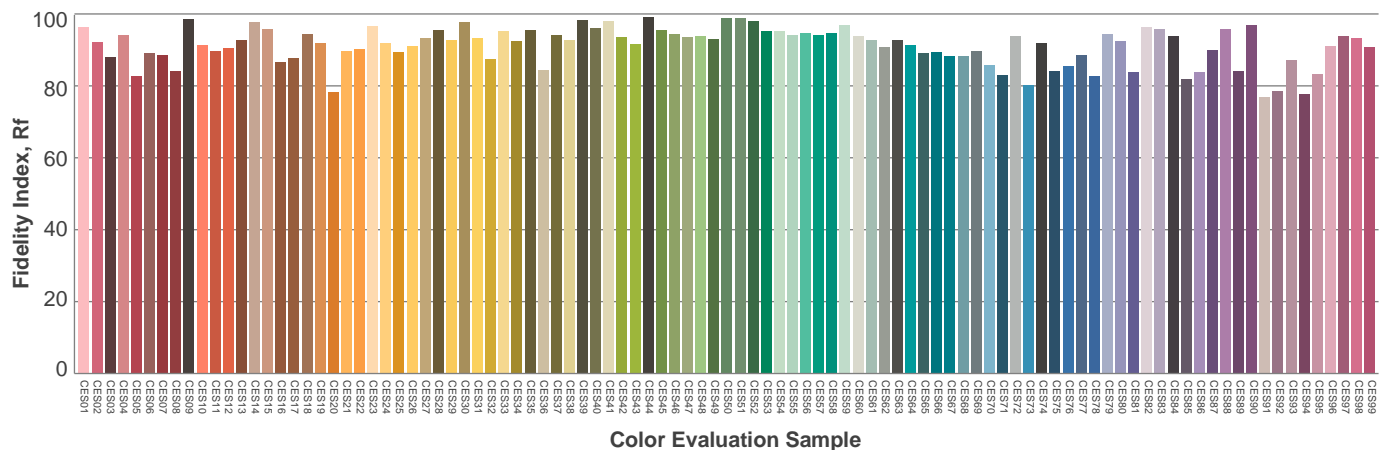
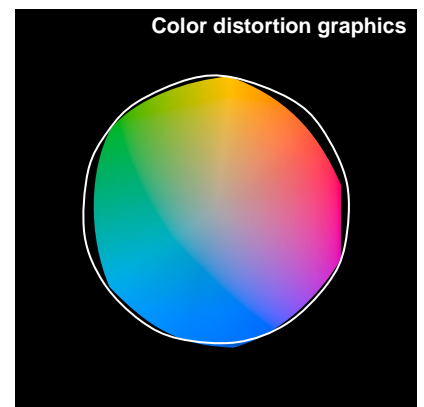
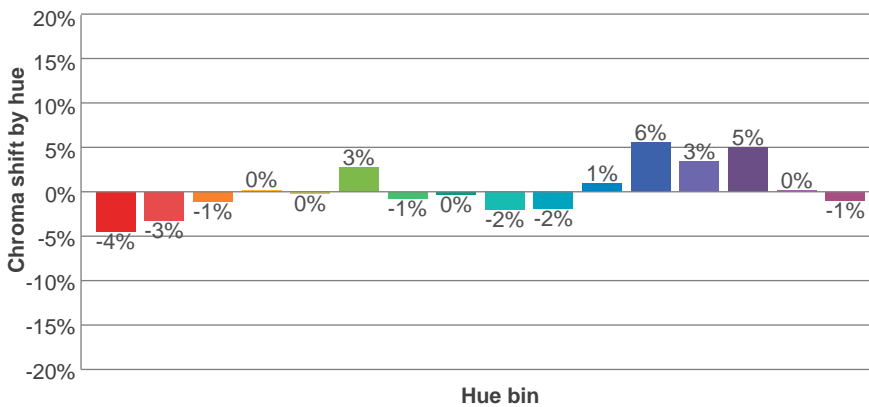
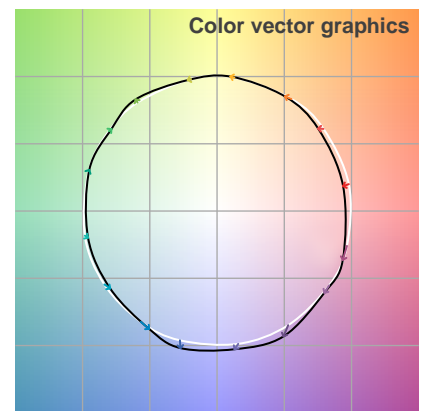
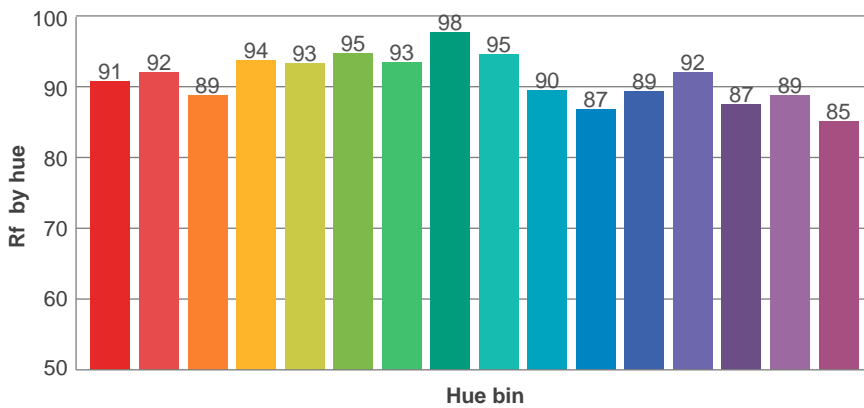
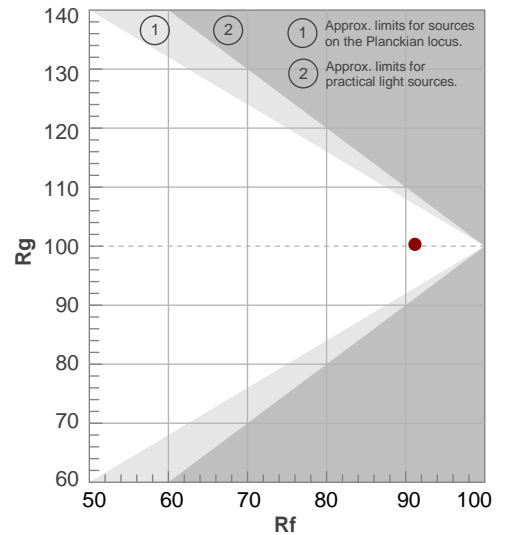
Color temperature	Color rendering index	Red component	Color fidelity	Color gamut	Color quality scale	Color coordinate cie 1931	Color coordinate cie 1931	Color coordinate	Color coordinate	Color deviation from black body
CCT	CRI	CRI R9	TM30 Rf	TM30 Rg	CQS	x	y	u	v	Δuv
3128 K	93.1	62.3	91.2	100.3	91.4	0.428	0.401	0.246	0.346	-0.0002

TM30 details

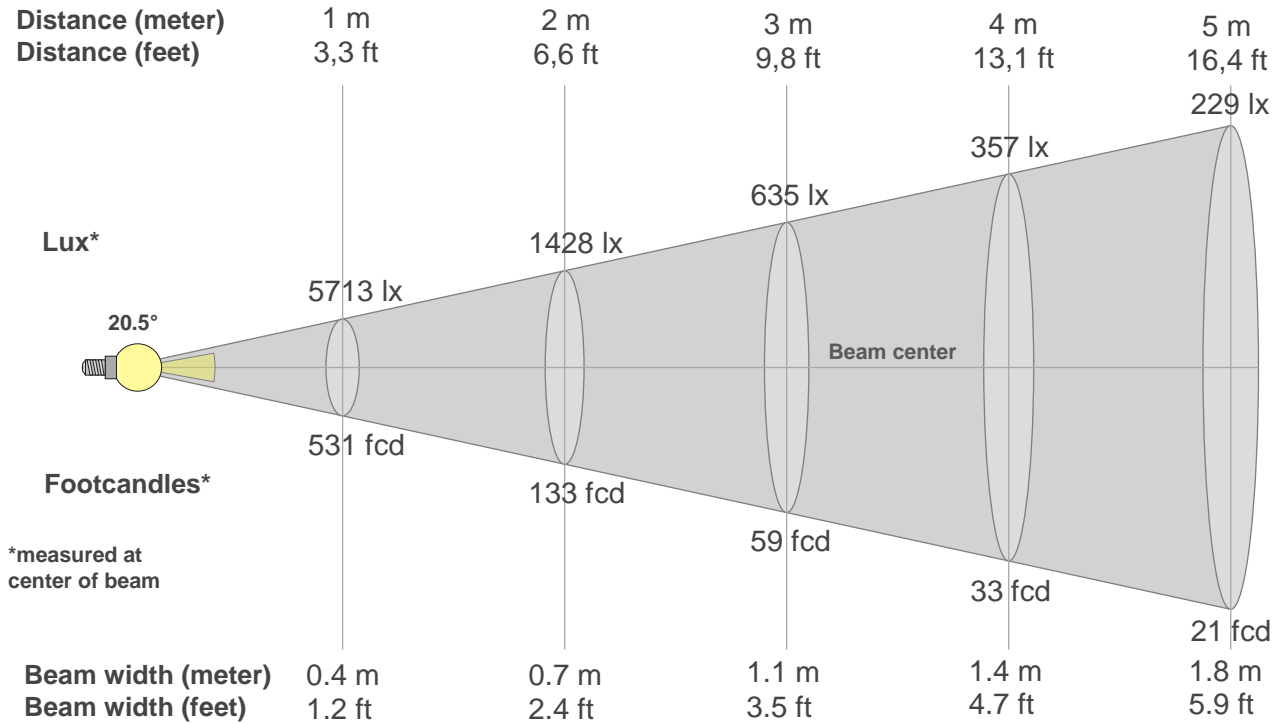
Rf 91.2
Fidelity index Rf

Rg 100.3
Gammut index Rg

Hue Bin	R _f	Graphic shifts (%)	
		Chroma	Hue
1	91	-4%	-1%
2	92	-3%	2%
3	89	-1%	5%
4	94	0%	3%
5	93	0%	3%
6	95	3%	0%
7	93	-1%	-3%
8	98	0%	-1%
9	95	-2%	2%
10	90	-2%	5%
11	87	1%	8%
12	89	6%	2%
13	92	3%	-3%
14	87	5%	-8%
15	89	0%	-6%
16	85	-1%	-11%



Beam details



Beam intensities from 1-20m

1m	2m	3m	4m	5m	6m	7m	8m	9m	10m	11m	12m	13m	14m	15m	16m	17m	18m	19m	20m
3.3ft	6.6ft	9.8ft	13.1ft	16.4ft	19.7ft	23ft	26.2ft	29.5ft	32.8ft	36.1ft	39.4ft	42.7ft	45.9ft	49.2ft	52.5ft	55.8ft	59.1ft	62.3ft	65.6ft
5713lx	1428lx	635lx	357lx	229lx	159lx	117lx	89lx	71lx	57lx	47lx	40lx	34lx	29lx	25lx	22lx	20lx	18lx	16lx	14lx
530.7fc	132.7fc	59fcd	33.2fcd	21.2fcd	14.7fcd	10.8fcd	8.3fcd	6.6fcd	5.3fcd	4.4fcd	3.7fcd	3.1fcd	2.7fcd	2.4fcd	2.1fcd	1.8fcd	1.6fcd	1.5fcd	1.3fcd

Intensities in 0° c-plane

0°	2°	4°	6°	8°	10°	12°	14°	16°	18°	20°	22°	24°	26°	28°	30°	32°	34°	36°	38°
5713	5579	5106	4425	3674	2954	2347	1836	1440	1125	885	688	531	397	284	198	135	96	71	52
100%	98%	89%	77%	64%	52%	41%	32%	25%	20%	15%	12%	9%	7%	5%	3%	2%	2%	1%	1%

Intensities in 90° c-plane

0°	2°	4°	6°	8°	10°	12°	14°	16°	18°	20°	22°	24°	26°	28°	30°	32°	34°	36°	38°
5713	5515	5022	4345	3610	2912	2319	1822	1438	1137	901	709	548	410	293	202	137	94	67	46
100%	97%	88%	76%	63%	51%	41%	32%	25%	20%	16%	12%	10%	7%	5%	4%	2%	2%	1%	1%

Intensities in 180° c-plane

0°	2°	4°	6°	8°	10°	12°	14°	16°	18°	20°	22°	24°	26°	28°	30°	32°	34°	36°	38°
5713	5521	5036	4353	3630	2950	2345	1856	1456	1153	909	715	552	414	296	205	142	100	74	53
100%	97%	88%	76%	64%	52%	41%	32%	25%	20%	16%	13%	10%	7%	5%	4%	2%	2%	1%	1%

Intensities in 270° c-plane

0°	2°	4°	6°	8°	10°	12°	14°	16°	18°	20°	22°	24°	26°	28°	30°	32°	34°	36°	38°
5713	5528	5055	4361	3618	2913	2299	1798	1408	1108	873	682	527	396	281	194	134	93	68	49
100%	97%	88%	76%	63%	51%	40%	31%	25%	19%	15%	12%	9%	7%	5%	3%	2%	2%	1%	1%

Beam angle 50%	Field angle 10%	Cutoff angle 2,5%	Intensity ratio in 120° cone	Intensity ratio in 90° cone
20.5°	47.1°	63.5°	99.5%	98.5%

THIS PAGE INTENTIONALLY LEFT BLANK