

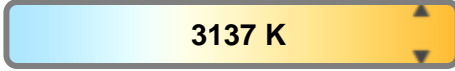
Light efficiency:



Light quality:



Color temperature:



Output: 1171 lm

Peak: 9212 cd

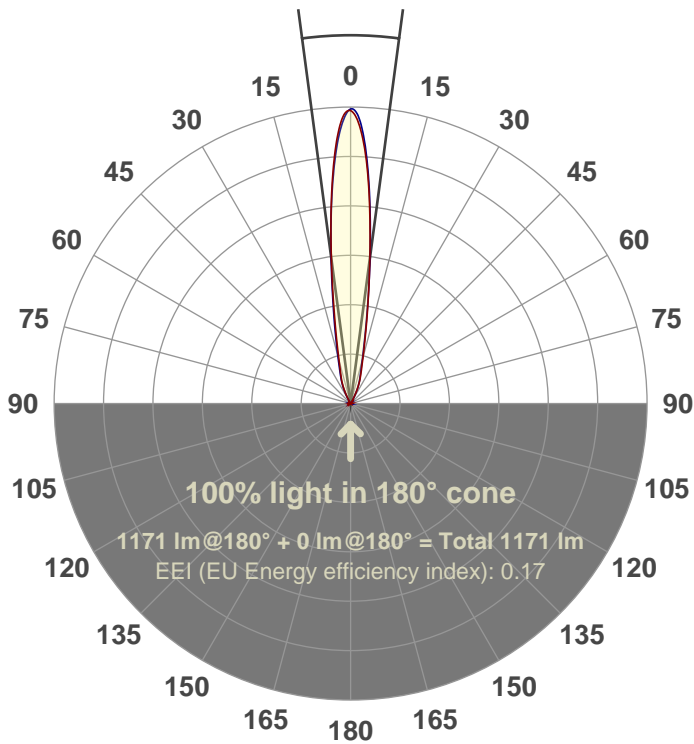
Power: 14.6 W

PF: 0.97



Beam angle

15.1°



Test number:

GR-CZ14-SP-RD

Luminaire Model:

GR-CZ14-SP-RD

Date and time:

7/5/2017 11:30:07 AM

Description:

350 mA V6

LUM: 1171

PPF: 19.9

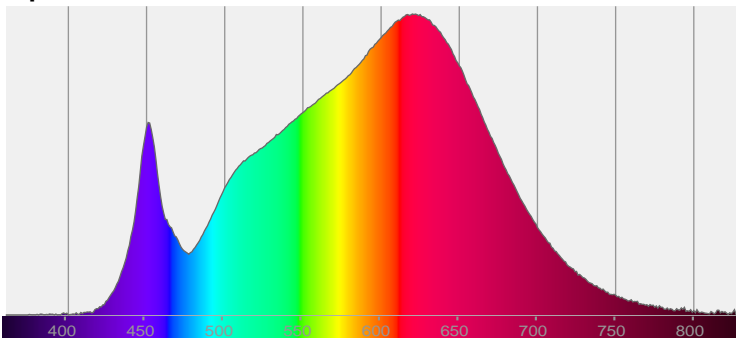


CIE 1931

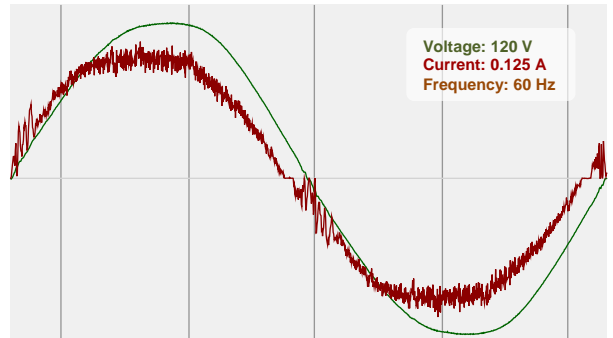
x: 0.428

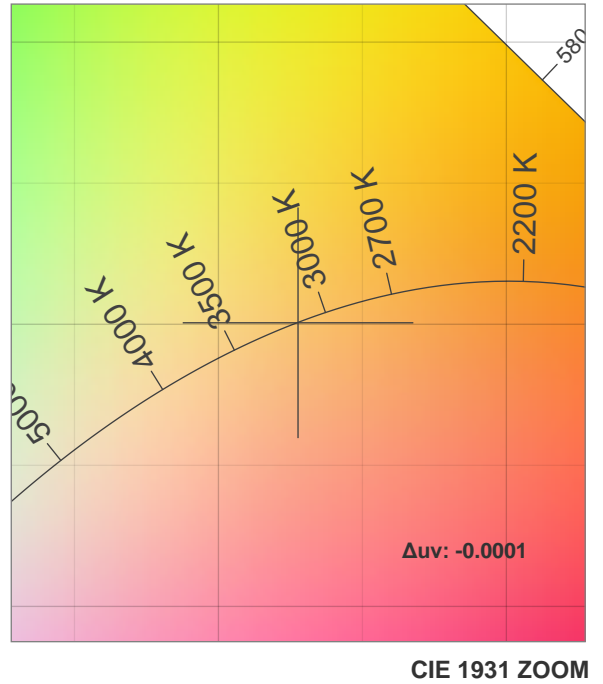
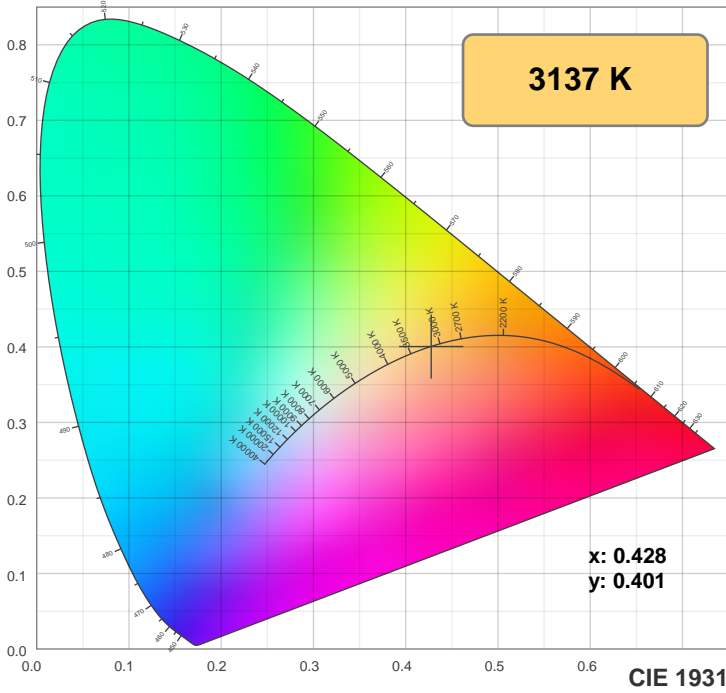
y: 0.401

Spectra

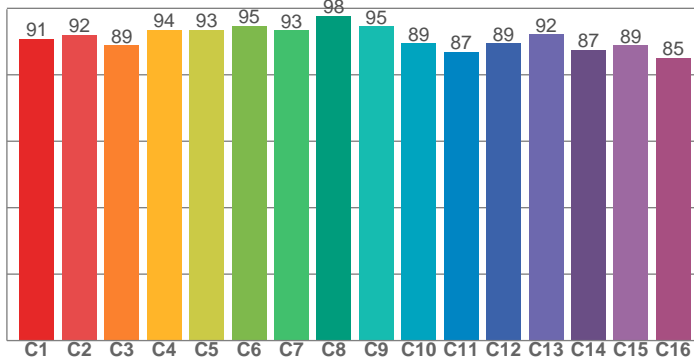


Power

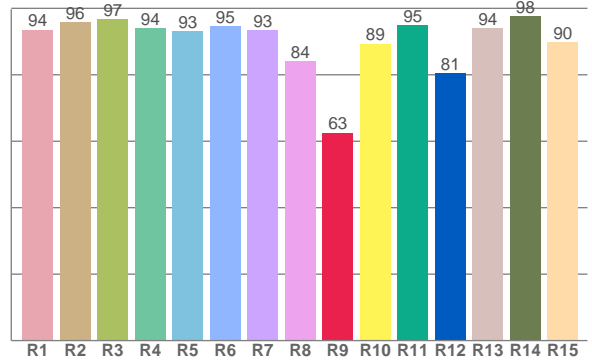




TM30: 91.2



CRI: 93.2 (R1-R8)



CRI R values, only R1-R8 are used to calculate final CRI value

R1	R2	R3	R4	R5	R6	R7	R8	R9	R10	R11	R12	R13	R14	R15
93.5	95.8	96.7	94.1	93.1	94.5	93.4	84.2	62.5	89.4	95.0	80.6	94.1	97.6	89.8

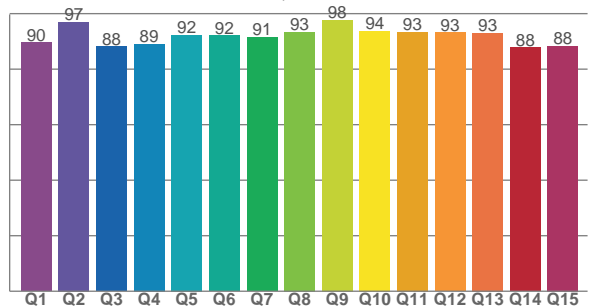
TM30 C values, 16 binned values out of total of 99 C values

C1	C2	C3	C4	C5	C6	C7	C8	C9	C10	C11	C12	C13	C14	C15	C16
90.7	92.1	88.8	93.5	93.4	94.7	93.4	97.8	94.5	89.5	86.8	89.4	92.1	87.5	88.9	85.0

CQS Q values

Q1	Q2	Q3	Q4	Q5	Q6	Q7	Q8	Q9	Q10	Q11	Q12	Q13	Q14	Q15
89.6	97.0	88.1	89.1	92.2	92.1	91.5	93.4	97.8	93.8	93.4	93.2	93.1	87.8	88.3

CQS: 91.4



Color parameters

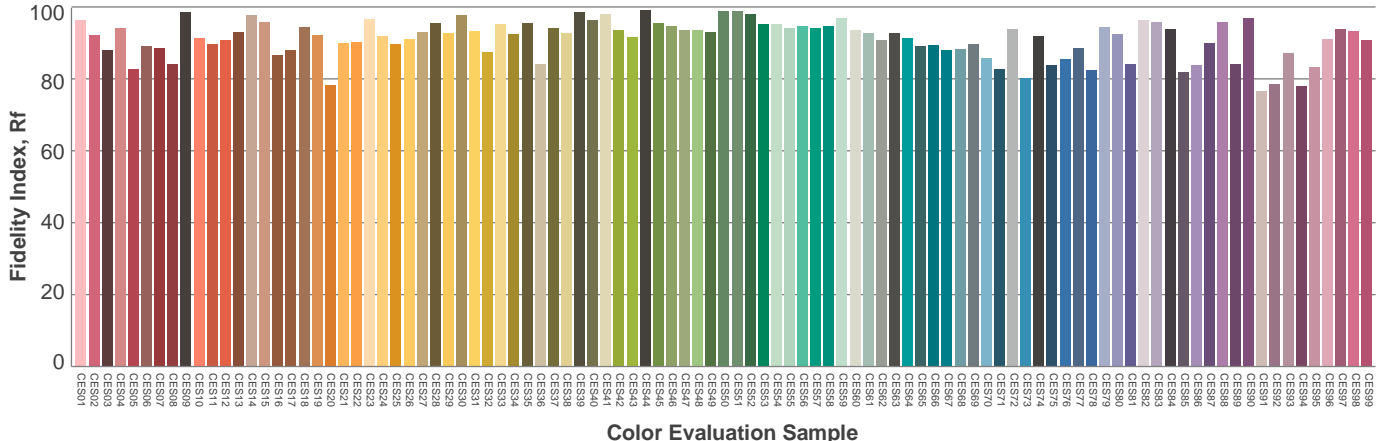
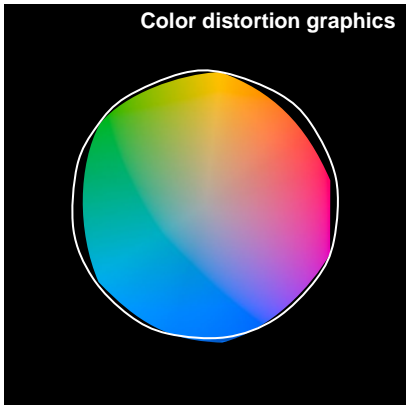
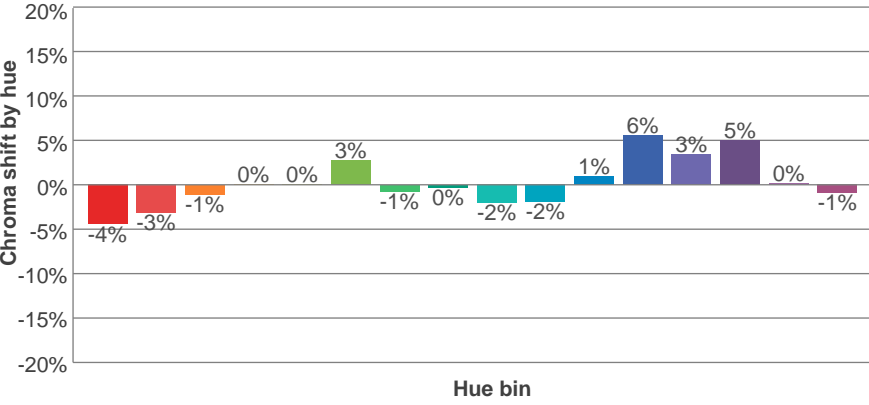
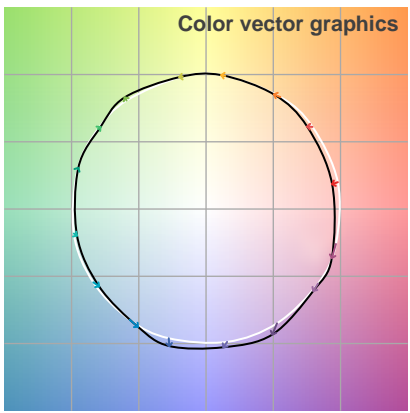
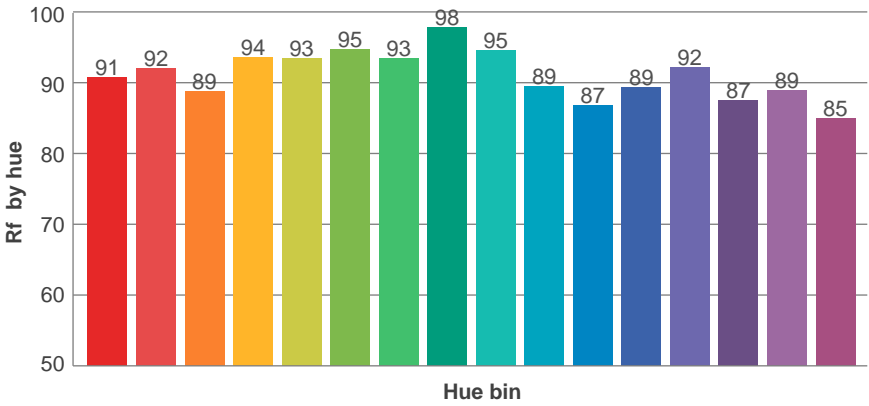
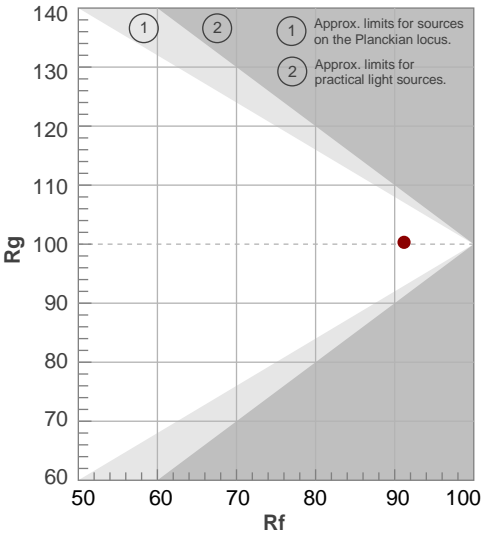
Color temperature	Color rendering index	Red component	Color fidelity	Color gamut	Color quality scale	Color coordinate cie 1931	Color coordinate cie 1931	Color coordinate	Color coordinate	Color deviation from black body
CCT	CRI	CRI R9	TM30 Rf	TM30 Rg	CQS	x	y	u	v	Δuv
3137 K	93.2	62.5	91.2	100.3	91.4	0.428	0.401	0.246	0.346	-0.0001

TM30 details

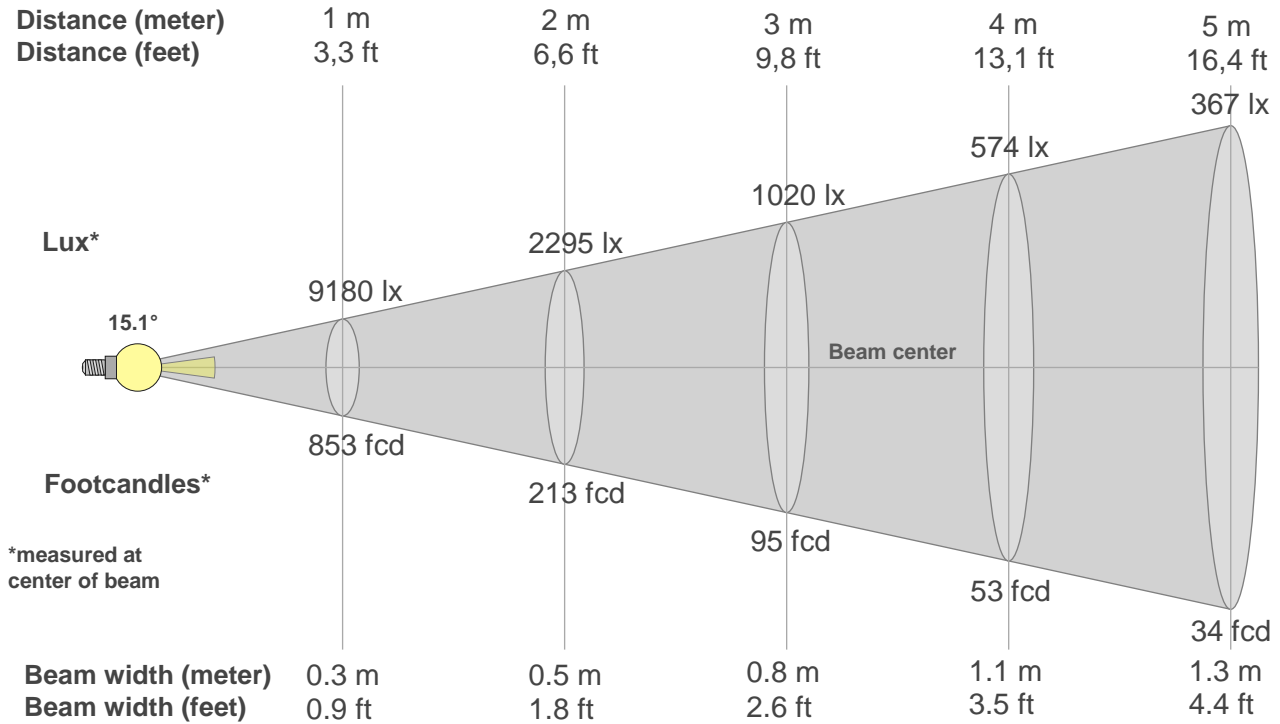
Rf 91.2
Fidelity index Rf

Rg 100.3
Gammut index Rg

Hue Bin	R _f	Graphic shifts (%)	
		Chroma	Hue
1	91	-4%	-1%
2	92	-3%	2%
3	89	-1%	5%
4	94	0%	3%
5	93	0%	2%
6	95	3%	0%
7	93	-1%	-2%
8	98	0%	-1%
9	95	-2%	2%
10	89	-2%	5%
11	87	1%	8%
12	89	6%	2%
13	92	3%	-3%
14	87	5%	-8%
15	89	0%	-6%
16	85	-1%	-11%



Beam details



Beam intensities from 1-20m

1m	2m	3m	4m	5m	6m	7m	8m	9m	10m	11m	12m	13m	14m	15m	16m	17m	18m	19m	20m
3.3ft	6.6ft	9.8ft	13.1ft	16.4ft	19.7ft	23ft	26.2ft	29.5ft	32.8ft	36.1ft	39.4ft	42.7ft	45.9ft	49.2ft	52.5ft	55.8ft	59.1ft	62.3ft	65.6ft
9180lx	2295lx	1020lx	574lx	367lx	255lx	187lx	143lx	113lx	92lx	76lx	64lx	54lx	47lx	41lx	36lx	32lx	28lx	25lx	23lx
852.8fc	213.2fc	94.8fcd	53.3fcd	34.1fcd	23.7fcd	17.4fcd	13.3fcd	10.5fcd	8.5fcd	7fcd	5.9fcd	5fcd	4.4fcd	3.8fcd	3.3fcd	3fcd	2.6fcd	2.4fcd	2.1fcd

Intensities in 0° c-plane

0°	1°	2°	3°	4°	5°	6°	7°	8°	9°	10°	11°	12°	13°	14°	15°	16°	17°	18°	19°
9180	9098	8788	8251	7538	6720	5875	5025	4246	3566	2986	2524	2150	1844	1599	1403	1248	1119	1019	927
100%	99%	96%	90%	82%	73%	64%	55%	46%	39%	33%	27%	23%	20%	17%	15%	14%	12%	11%	10%

Intensities in 90° c-plane

0°	1°	2°	3°	4°	5°	6°	7°	8°	9°	10°	11°	12°	13°	14°	15°	16°	17°	18°	19°
9180	9018	8630	8085	7407	6636	5824	5034	4324	3684	3141	2703	2326	2006	1746	1538	1363	1217	1099	997
100%	98%	94%	88%	81%	72%	63%	55%	47%	40%	34%	29%	25%	22%	19%	17%	15%	13%	12%	11%

Intensities in 180° c-plane

0°	1°	2°	3°	4°	5°	6°	7°	8°	9°	10°	11°	12°	13°	14°	15°	16°	17°	18°	19°
9180	8982	8611	8074	7396	6612	5782	4989	4266	3631	3095	2644	2259	1952	1707	1497	1328	1193	1085	984
100%	98%	94%	88%	81%	72%	63%	54%	46%	40%	34%	29%	25%	21%	19%	16%	14%	13%	12%	11%

Intensities in 270° c-plane

0°	1°	2°	3°	4°	5°	6°	7°	8°	9°	10°	11°	12°	13°	14°	15°	16°	17°	18°	19°
9180	9129	8800	8228	7512	6706	5860	5060	4302	3620	3027	2551	2161	1847	1598	1402	1239	1109	1009	918
100%	99%	96%	90%	82%	73%	64%	55%	47%	39%	33%	28%	24%	20%	17%	15%	14%	12%	11%	10%

Beam angle 50%	Field angle 10%	Cutoff angle 2,5%	Intensity ratio in 120° cone	Intensity ratio in 90° cone
15.1°	38.9°	55.6°	99.8%	99.5%

THIS PAGE INTENTIONALLY LEFT BLANK