

Light efficiency:



Light quality:



Color temperature:

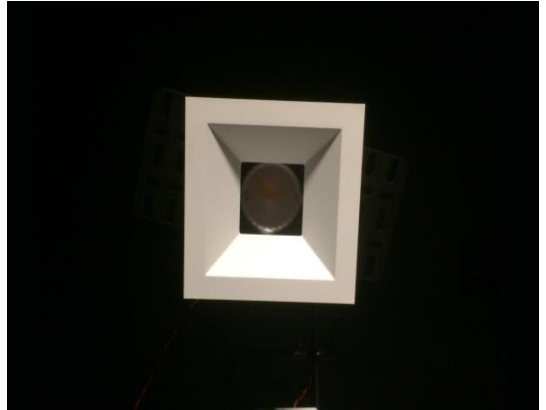


Output: 1059 lm

Peak: 6532 cd

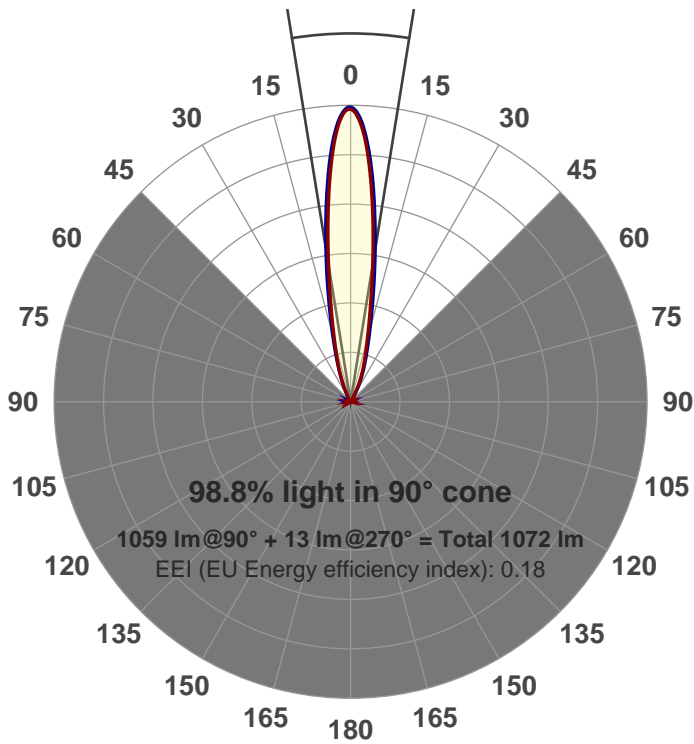
Power: 14.6 W

PF: 0.97



Beam angle

18.3°



Product name:

GR-CZ14-SP-SQ-91A revF

Item number:

GR-CZ14-SP-SQ-91A revF

Date and time:

6/15/2017 2:37:45 PM

Description:

350mA

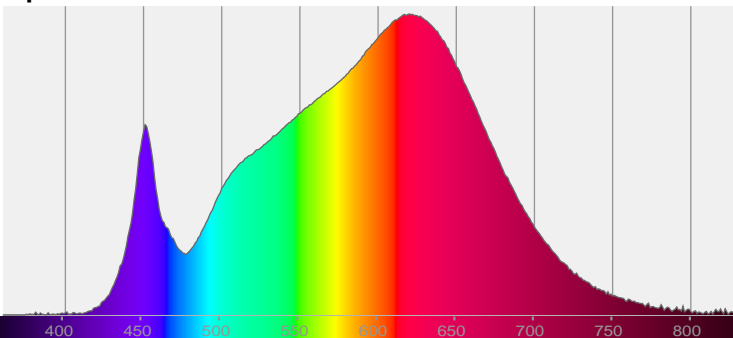
LUM: 1059

PPF: 17.8

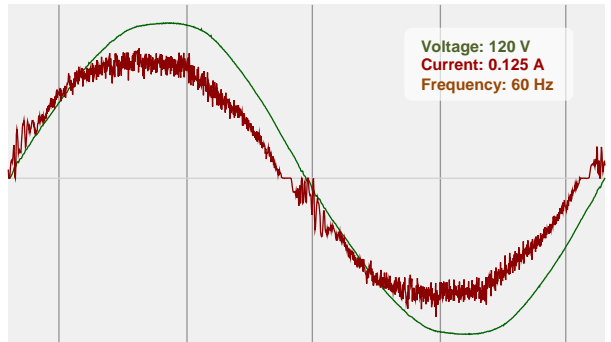


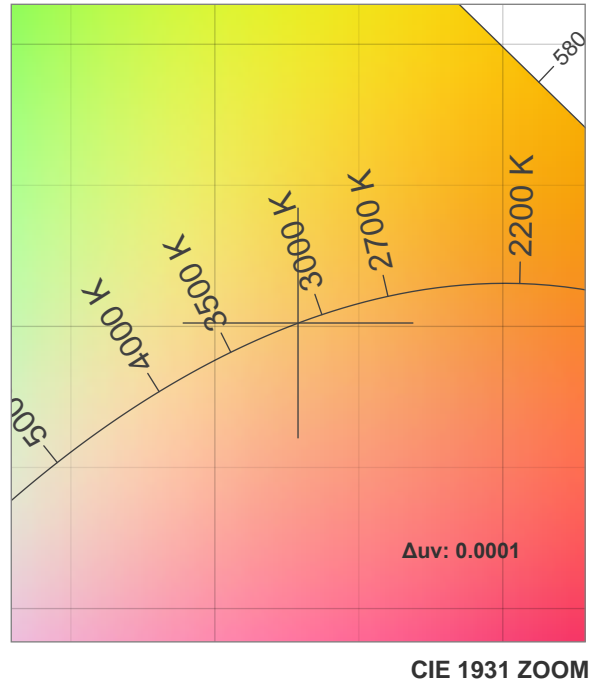
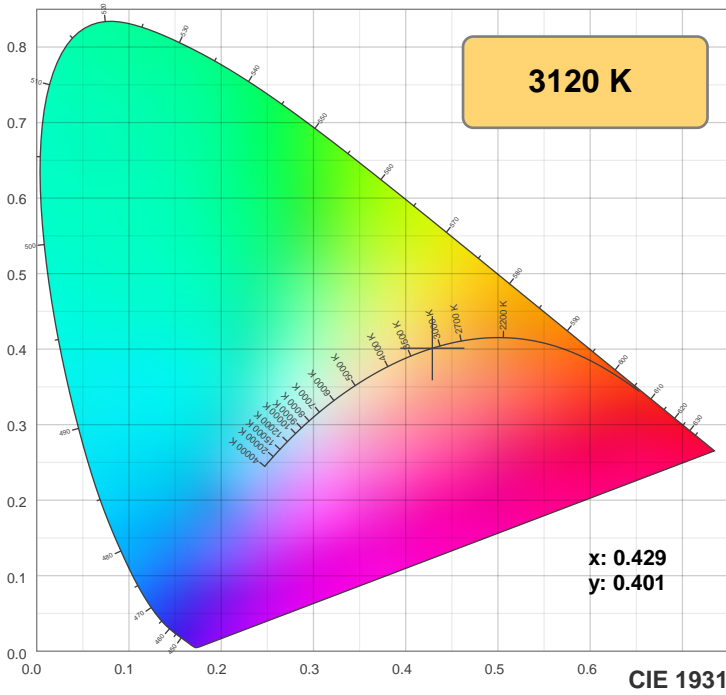
CIE 1931
x: 0.429
y: 0.401

Spectra

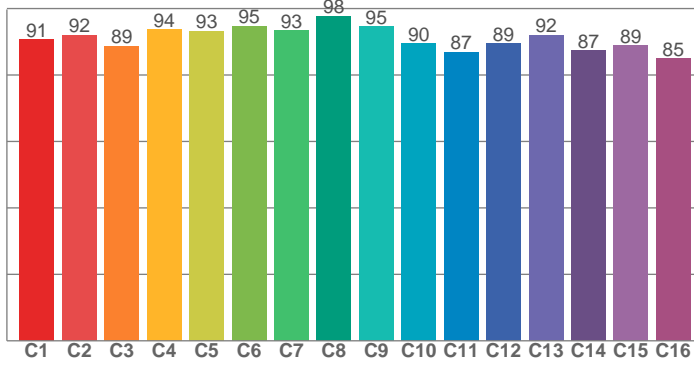


Power

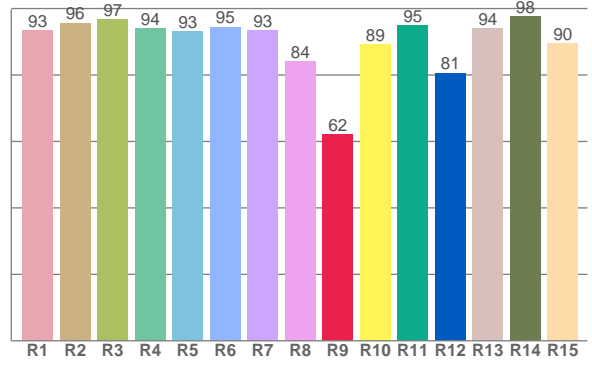




TM30: 91.2



CRI: 93.1 (R1-R8)



CRI R values, only R1-R8 are used to calculate final CRI value

R1	R2	R3	R4	R5	R6	R7	R8	R9	R10	R11	R12	R13	R14	R15
93.4	95.7	96.8	94.0	93.0	94.5	93.3	84.0	62.2	89.3	94.9	80.6	94.0	97.6	89.6

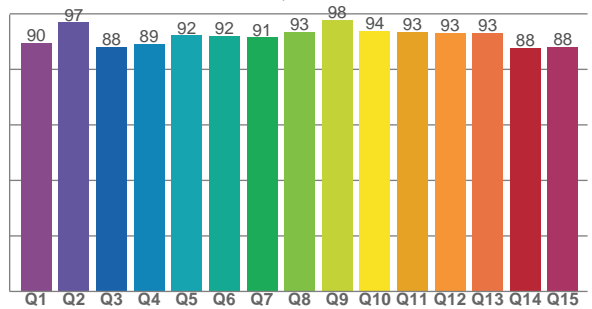
TM30 C values, 16 binned values out of total of 99 C values

C1	C2	C3	C4	C5	C6	C7	C8	C9	C10	C11	C12	C13	C14	C15	C16
90.7	92.0	88.8	93.7	93.3	94.7	93.4	97.7	94.5	89.5	86.9	89.4	92.1	87.4	88.8	85.0

CQS Q values

Q1	Q2	Q3	Q4	Q5	Q6	Q7	Q8	Q9	Q10	Q11	Q12	Q13	Q14	Q15
89.5	96.9	88.2	89.1	92.2	92.0	91.5	93.4	97.7	93.8	93.4	93.2	93.0	87.7	88.2

CQS: 91.4



Color parameters

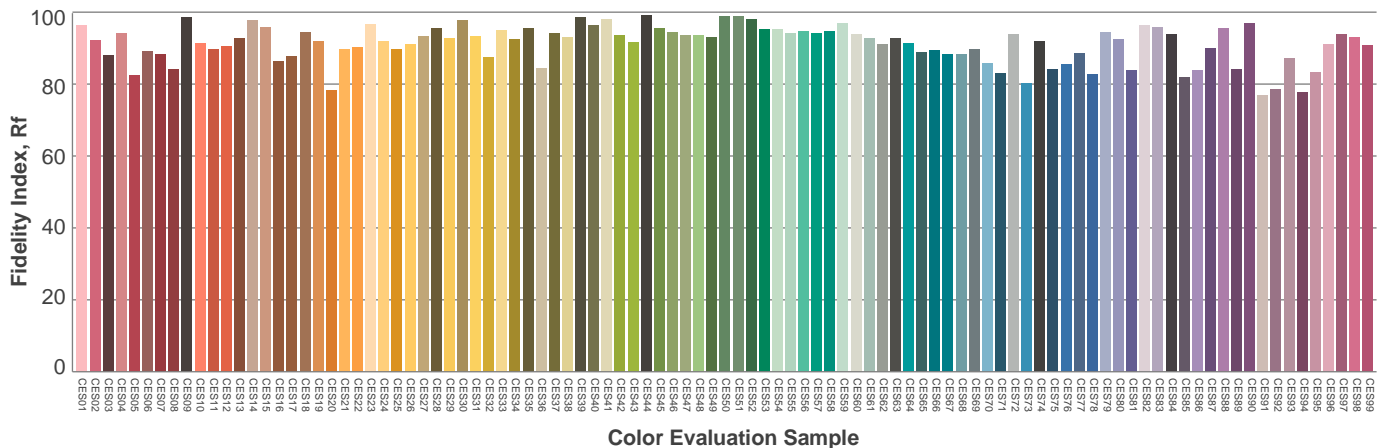
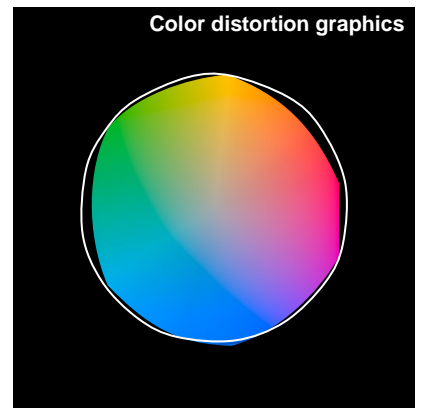
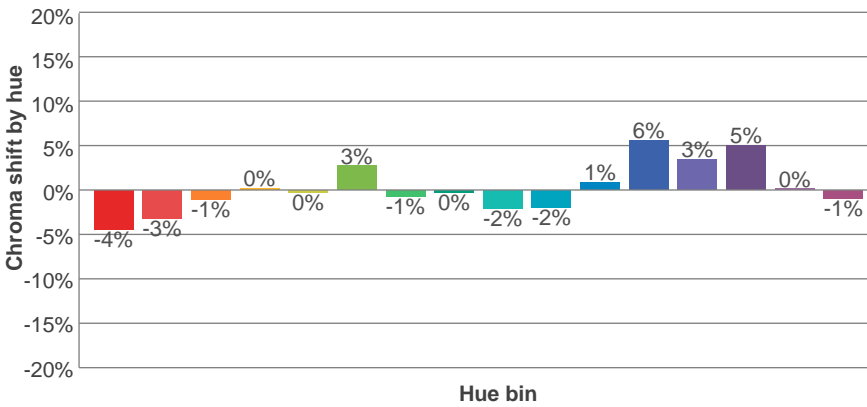
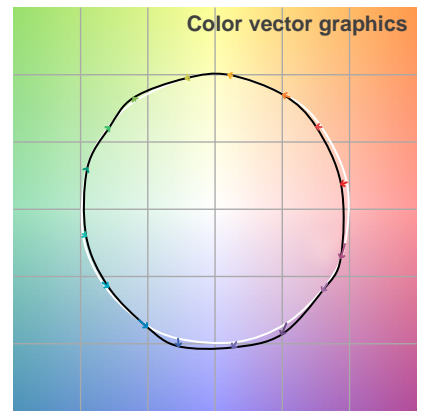
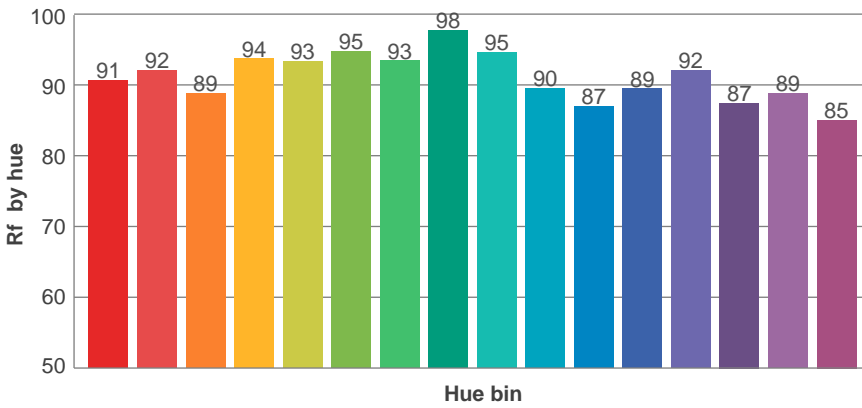
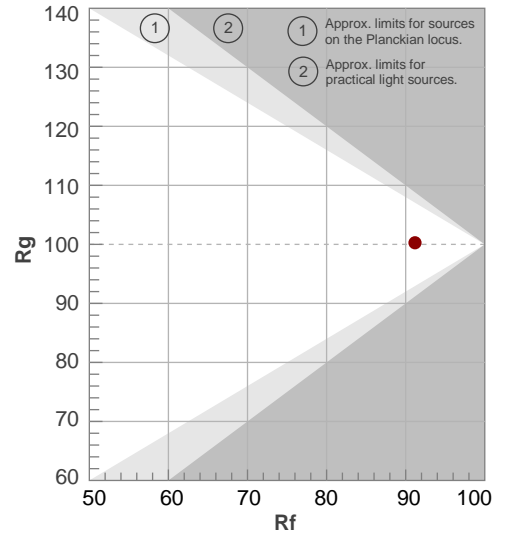
Color temperature	Color rendering index	Red component	Color fidelity	Color gamut	Color quality scale	Color coordinate cie 1931	Color coordinate cie 1931	Color coordinate	Color coordinate	Color deviation from black body
CCT	CRI	CRI R9	TM30 Rf	TM30 Rg	CQS	x	y	u	v	Δuv
3120 K	93.1	62.2	91.2	100.3	91.4	0.429	0.401	0.247	0.346	0.0001

TM30 details

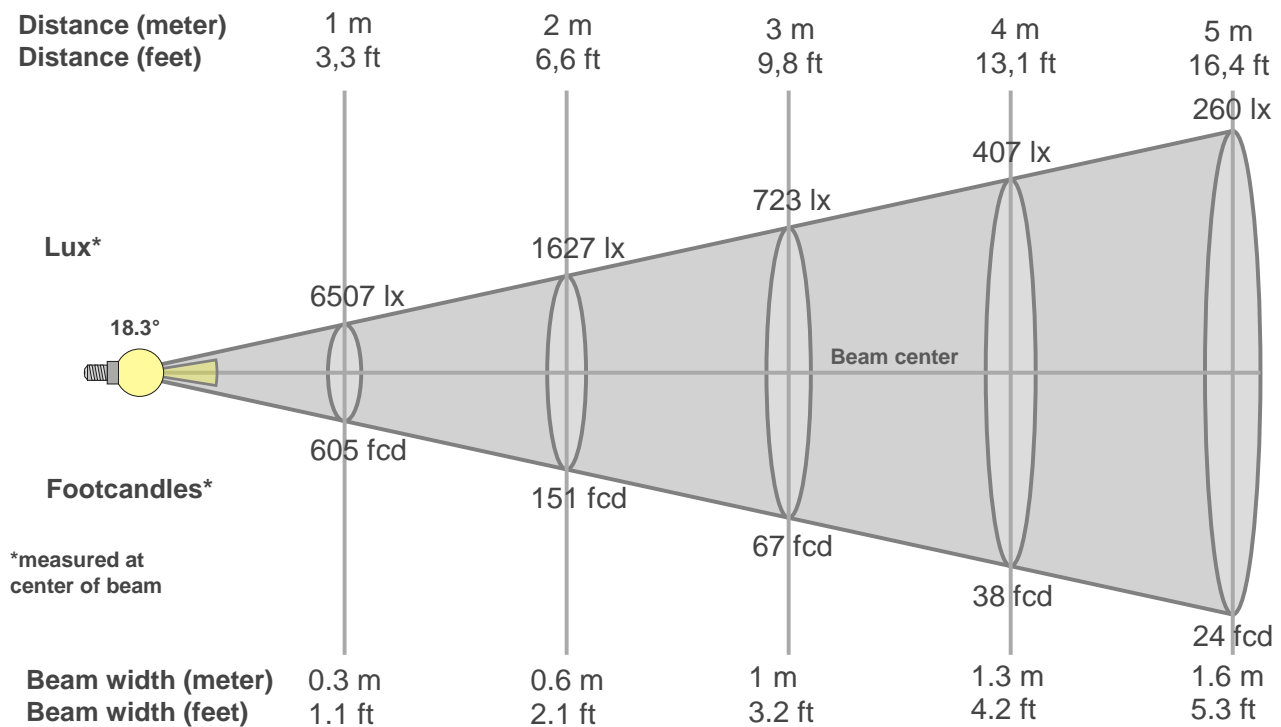
Rf 91.2
Fidelity index Rf

Rg 100.3
Gammut index Rg

Hue Bin	R _f	Graphic shifts (%)	
		Chroma	Hue
1	91	-4%	-1%
2	92	-3%	2%
3	89	-1%	5%
4	94	0%	3%
5	93	0%	3%
6	95	3%	0%
7	93	-1%	-3%
8	98	0%	-1%
9	95	-2%	2%
10	90	-2%	5%
11	87	1%	8%
12	89	6%	1%
13	92	3%	-3%
14	87	5%	-8%
15	89	0%	-6%
16	85	-1%	-11%



Beam details



Beam intensities from 1-20m

1m	2m	3m	4m	5m	6m	7m	8m	9m	10m	11m	12m	13m	14m	15m	16m	17m	18m	19m	20m
3.3ft	6.6ft	9.8ft	13.1ft	16.4ft	19.7ft	23ft	26.2ft	29.5ft	32.8ft	36.1ft	39.4ft	42.7ft	45.9ft	49.2ft	52.5ft	55.8ft	59.1ft	62.3ft	65.6ft
6507lx	1627lx	723lx	407lx	260lx	181lx	133lx	102lx	80lx	65lx	54lx	45lx	39lx	33lx	29lx	25lx	23lx	20lx	18lx	16lx
604.5fcd	151.1fcd	67.2fcd	37.8fcd	24.2fcd	16.8fcd	12.3fcd	9.4fcd	7.5fcd	6fcd	5fcd	4.2fcd	3.6fcd	3.1fcd	2.7fcd	2.4fcd	2.1fcd	1.9fcd	1.7fcd	1.5fcd

Intensities in 0° c-plane

0°	2°	4°	6°	8°	10°	12°	14°	16°	18°	20°	22°	24°	26°	28°	30°	32°	34°	36°	38°
6507	6273	5589	4619	3607	2723	2040	1538	1185	919	702	514	354	226	140	88	58	41	30	23
100%	96%	86%	71%	55%	42%	31%	24%	18%	14%	11%	8%	5%	3%	2%	1%	1%	1%	0%	0%

Intensities in 90° c-plane

0°	2°	4°	6°	8°	10°	12°	14°	16°	18°	20°	22°	24°	26°	28°	30°	32°	34°	36°	38°
6507	6340	5753	4883	3951	3086	2349	1773	1330	1006	749	547	379	254	166	110	75	50	35	25
100%	97%	88%	75%	61%	47%	36%	27%	20%	15%	12%	8%	6%	4%	3%	2%	1%	1%	1%	0%

Intensities in 180° c-plane

0°	2°	4°	6°	8°	10°	12°	14°	16°	18°	20°	22°	24°	26°	28°	30°	32°	34°	36°	38°
6507	6183	5479	4536	3583	2748	2087	1610	1269	1023	826	653	487	328	201	117	68	43	31	24
100%	95%	84%	70%	55%	42%	32%	25%	19%	16%	13%	10%	7%	5%	3%	2%	1%	1%	0%	0%

Intensities in 270° c-plane

0°	2°	4°	6°	8°	10°	12°	14°	16°	18°	20°	22°	24°	26°	28°	30°	32°	34°	36°	38°
6507	6279	5641	4800	3903	3091	2408	1865	1469	1171	941	751	580	429	298	195	123	79	51	33
100%	96%	87%	74%	60%	48%	37%	29%	23%	18%	14%	12%	9%	7%	5%	3%	2%	1%	1%	1%

Beam angle 50%	Field angle 10%	Cutoff angle 2,5%	Intensity ratio in 120° cone	Intensity ratio in 90° cone
18.3°	43.3°	57.5°	99.6%	98.8%

THIS PAGE INTENTIONALLY LEFT BLANK