

Light efficiency:



Light quality:



Color temperature:

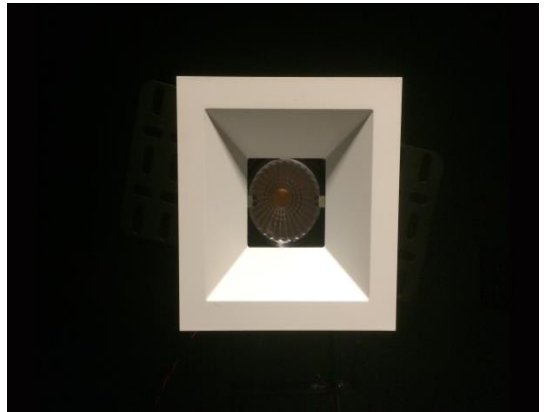


Output: 1123 lm

Peak: 9375 cd

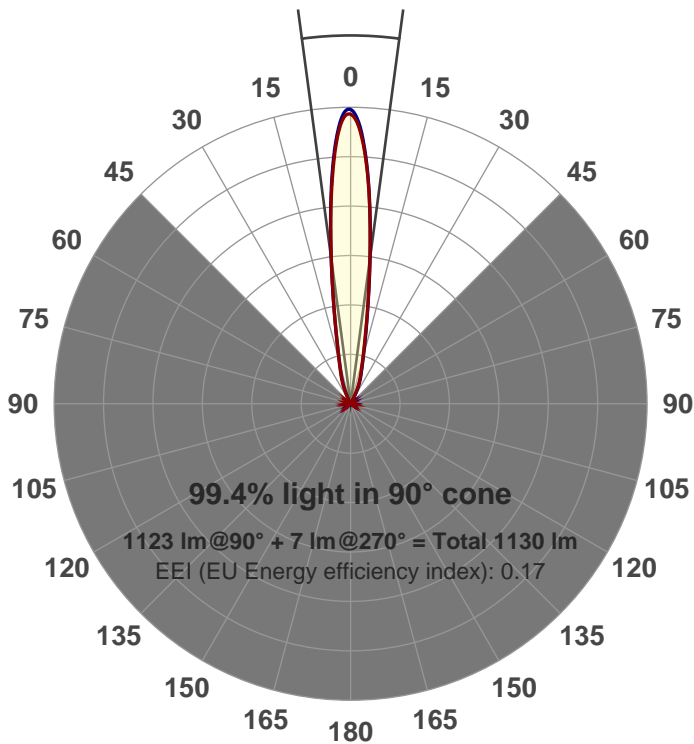
Power: 14.7 W

PF: 0.97



Beam angle

15.2°



Product name:
GR-CZ14-SP-SQ revF

Item number:
GR-CZ14-SP-SQ revF

Date and time:
6/15/2017 2:23:33 PM

Description:
350mA revF

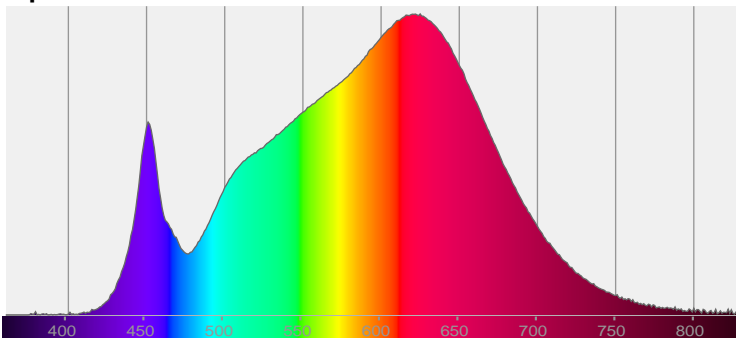
LUM: 1123

PPF: 18.9

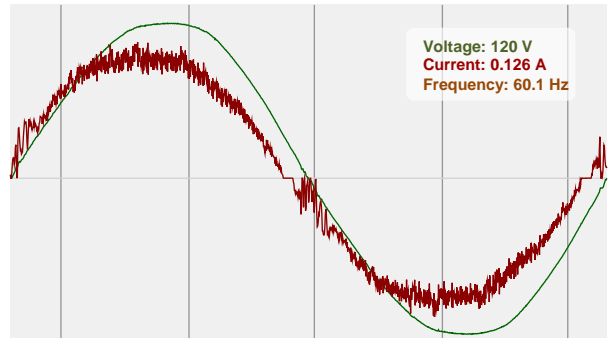


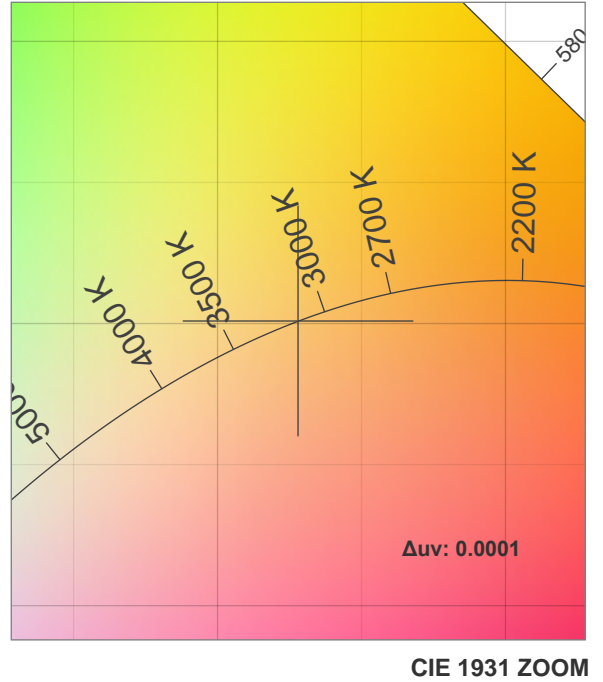
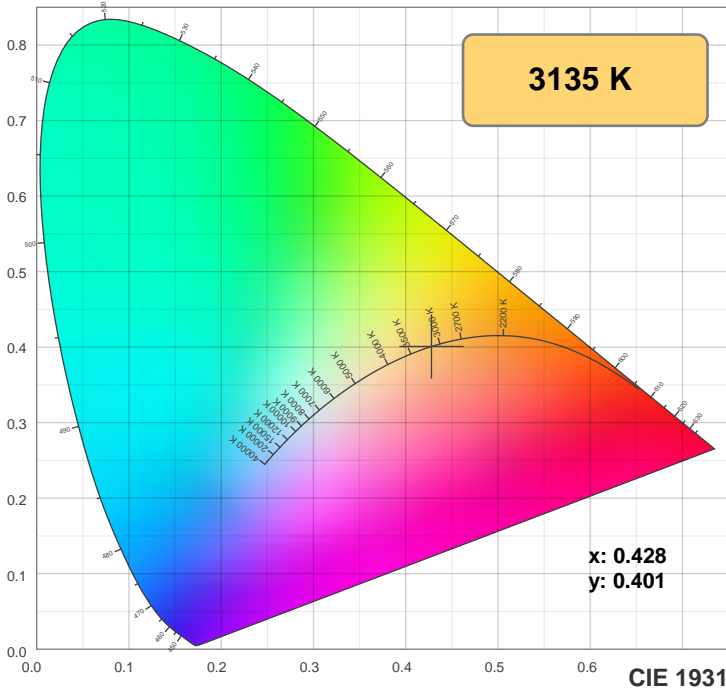
CIE 1931
x: 0.428
y: 0.401

Spectra

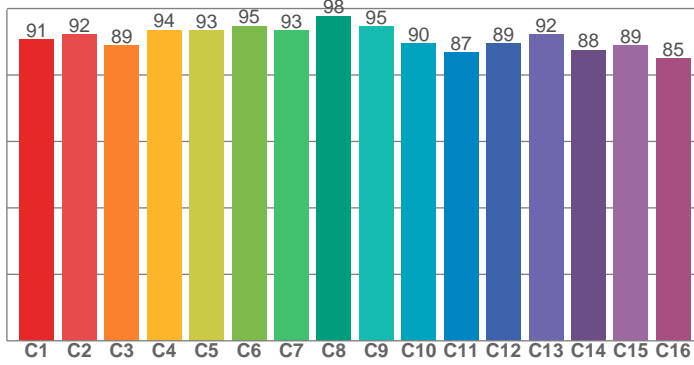


Power

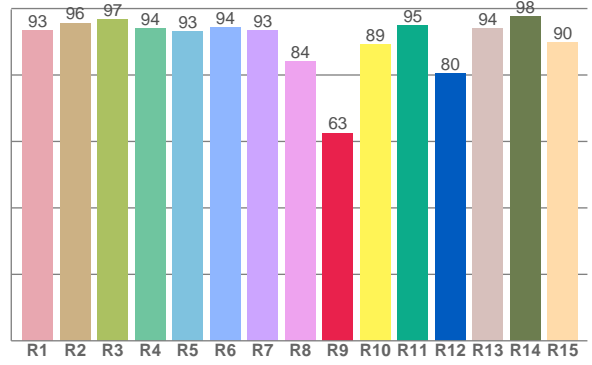




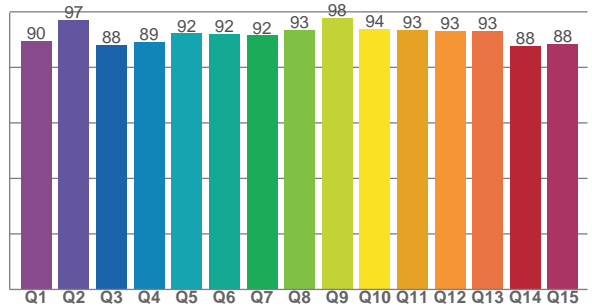
TM30: 91.2



CRI: 93.1 (R1-R8)



CQS: 91.4



CRI R values, only R1-R8 are used to calculate final CRI value

R1	R2	R3	R4	R5	R6	R7	R8	R9	R10	R11	R12	R13	R14	R15
93.5	95.7	96.7	94.1	93.1	94.5	93.4	84.2	62.6	89.2	95.0	80.5	94.0	97.5	89.7

TM30 C values, 16 binned values out of total of 99 C values

C1	C2	C3	C4	C5	C6	C7	C8	C9	C10	C11	C12	C13	C14	C15	C16
90.7	92.1	88.8	93.5	93.5	94.7	93.4	97.8	94.6	89.6	86.9	89.4	92.1	87.5	88.9	85.1

CQS Q values

Q1	Q2	Q3	Q4	Q5	Q6	Q7	Q8	Q9	Q10	Q11	Q12	Q13	Q14	Q15
89.6	97.0	88.1	89.1	92.2	92.0	91.5	93.5	97.8	93.8	93.5	93.2	93.1	87.8	88.3

Color parameters

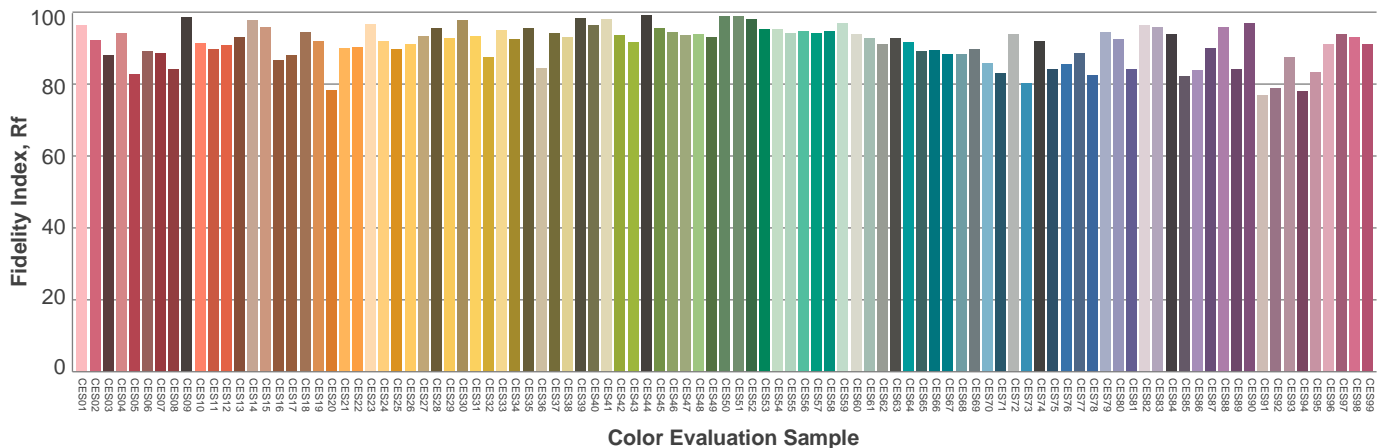
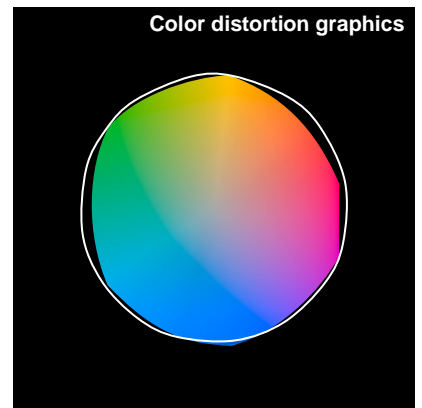
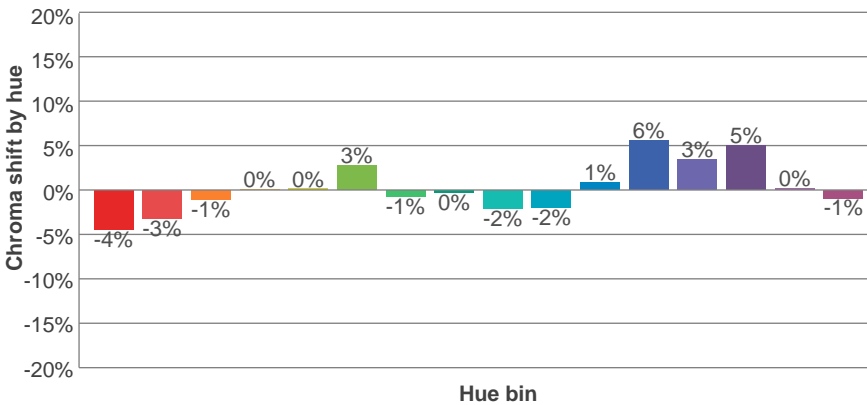
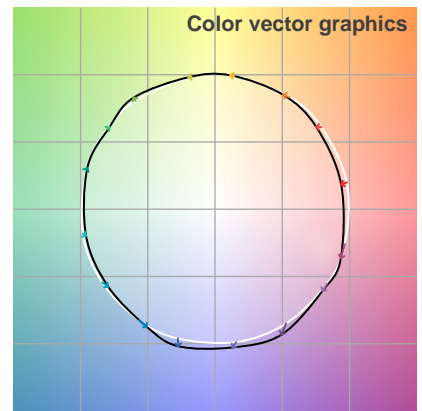
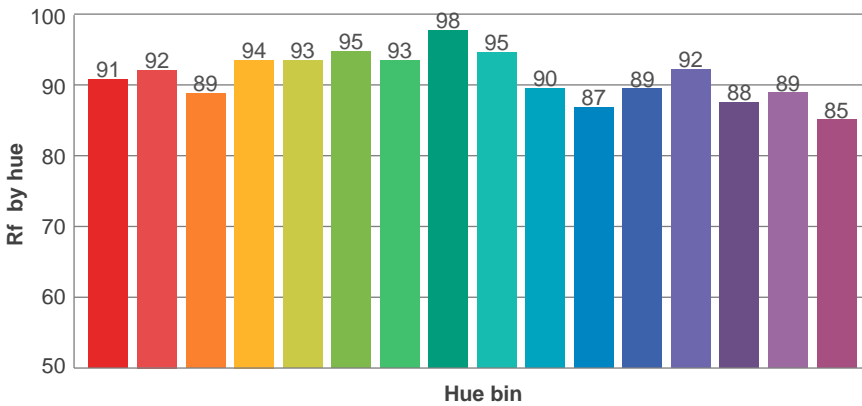
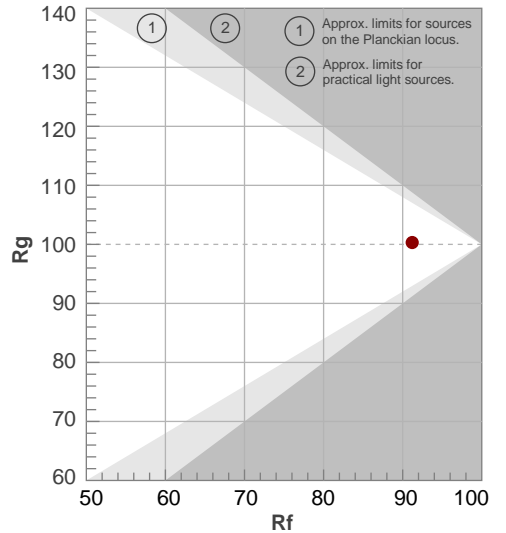
Color temperature	Color rendering index	Red component	Color fidelity	Color gamut	Color quality scale	Color coordinate cie 1931	Color coordinate cie 1931	Color coordinate	Color coordinate	Color deviation from black body
CCT	CRI	CRI R9	TM30 Rf	TM30 Rg	CQS	x	y	u	v	Δuv
3135 K	93.1	62.6	91.2	100.3	91.4	0.428	0.401	0.246	0.346	0.0001

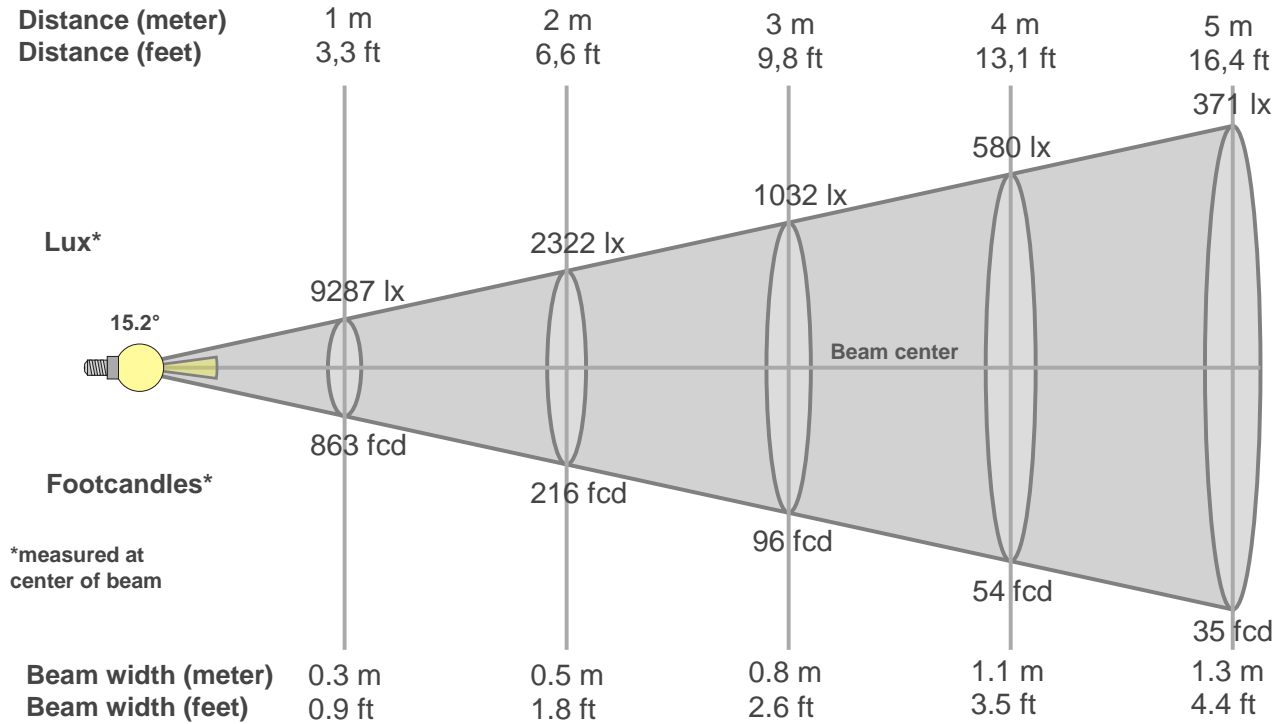
TM30 details

Rf 91.2
Fidelity index Rf

Rg 100.3
Gammut index Rg

Hue Bin	R _f	Graphic shifts (%)	
		Chroma	Hue
1	91	-4%	-1%
2	92	-3%	2%
3	89	-1%	5%
4	94	0%	3%
5	93	0%	2%
6	95	3%	0%
7	93	-1%	-3%
8	98	0%	-1%
9	95	-2%	2%
10	90	-2%	5%
11	87	1%	8%
12	89	6%	2%
13	92	3%	-3%
14	88	5%	-7%
15	89	0%	-6%
16	85	-1%	-11%





Beam intensities from 1-20m

1m	2m	3m	4m	5m	6m	7m	8m	9m	10m	11m	12m	13m	14m	15m	16m	17m	18m	19m	20m
3.3ft	6.6ft	9.8ft	13.1ft	16.4ft	19.7ft	23ft	26.2ft	29.5ft	32.8ft	36.1ft	39.4ft	42.7ft	45.9ft	49.2ft	52.5ft	55.8ft	59.1ft	62.3ft	65.6ft
9287lx	2322lx	1032lx	580lx	371lx	258lx	190lx	145lx	115lx	93lx	77lx	64lx	55lx	47lx	41lx	36lx	32lx	29lx	26lx	23lx
862.8fc	215.7fc	95.9fcd	53.9fcd	34.5fcd	24fcd	17.6fcd	13.5fcd	10.7fcd	8.6fcd	7.1fcd	6fcd	5.1fcd	4.4fcd	3.8fcd	3.4fcd	3fcd	2.7fcd	2.4fcd	2.2fcd

Intensities in 0° c-plane

0°	1°	2°	3°	4°	5°	6°	7°	8°	9°	10°	11°	12°	13°	14°	15°	16°	17°	18°	19°
9287	9174	8901	8390	7691	6894	6017	5143	4326	3614	3015	2521	2151	1848	1603	1409	1256	1125	1011	916
100%	99%	96%	90%	83%	74%	65%	55%	47%	39%	32%	27%	23%	20%	17%	15%	14%	12%	11%	10%

Intensities in 90° c-plane

0°	1°	2°	3°	4°	5°	6°	7°	8°	9°	10°	11°	12°	13°	14°	15°	16°	17°	18°	19°
9287	9318	9025	8494	7808	6977	6073	5180	4334	3594	2985	2486	2081	1771	1540	1336	1181	1043	936	817
100%	100%	97%	91%	84%	75%	65%	56%	47%	39%	32%	27%	22%	19%	17%	14%	13%	11%	10%	9%

Intensities in 180° c-plane

0°	1°	2°	3°	4°	5°	6°	7°	8°	9°	10°	11°	12°	13°	14°	15°	16°	17°	18°	19°
9287	9044	8675	8139	7481	6724	5893	5098	4345	3694	3141	2662	2279	1970	1723	1512	1349	1210	1100	995
100%	97%	93%	88%	81%	72%	63%	55%	47%	40%	34%	29%	25%	21%	19%	16%	15%	13%	12%	11%

Intensities in 270° c-plane

0°	1°	2°	3°	4°	5°	6°	7°	8°	9°	10°	11°	12°	13°	14°	15°	16°	17°	18°	19°
9287	9180	8801	8218	7535	6752	5930	5127	4381	3737	3184	2730	2357	2044	1786	1579	1403	1263	1141	1045
100%	99%	95%	88%	81%	73%	64%	55%	47%	40%	34%	29%	25%	22%	19%	17%	15%	14%	12%	11%

Beam angle 50%	Field angle 10%	Cutoff angle 2,5%	Intensity ratio in 120° cone	Intensity ratio in 90° cone
15.2°	38.5°	52.1°	99.7%	99.4%

THIS PAGE INTENTIONALLY LEFT BLANK