

Light efficiency:



Light quality:



Color temperature:



Output: 1079 lm

Peak: 1600 cd

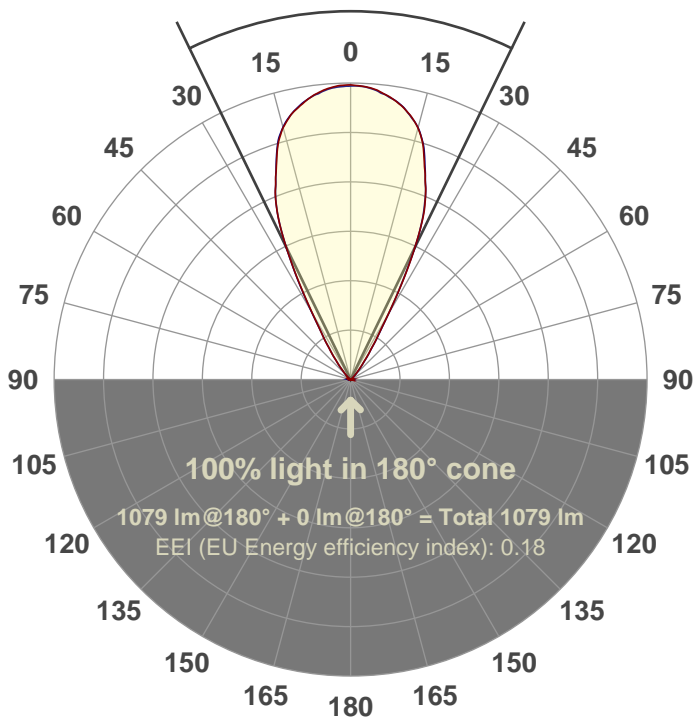
Power: 14.7 W

PF: 0.97



Beam angle

51.9°



Test number:

GR-CZ14-WF-RD

Luminaire Model:

GR-CZ14-WF-RD

Date and time:

7/5/2017 10:56:13 AM

Description:

350 mA V6

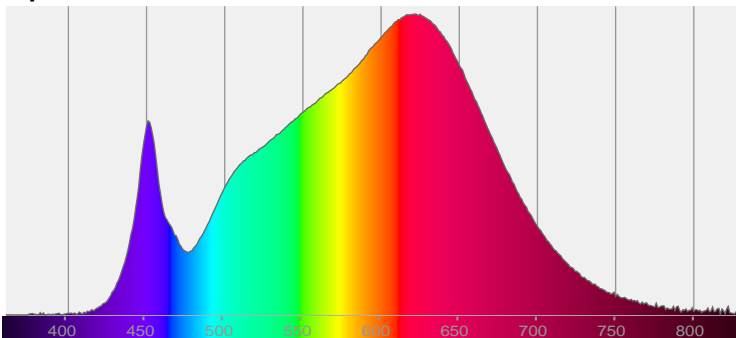
LUM: 1079

PPF: 18.4

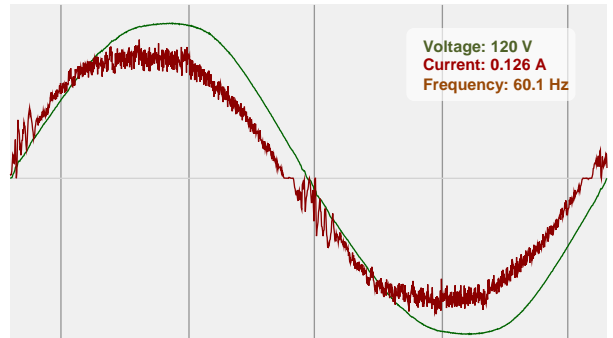


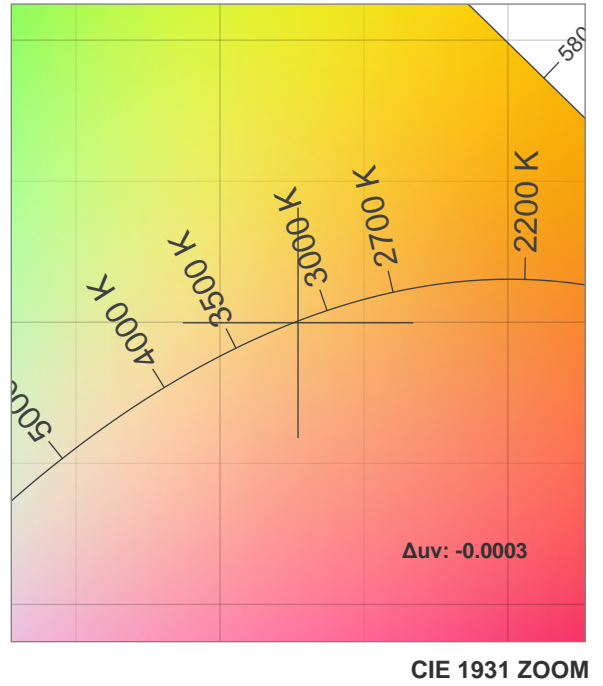
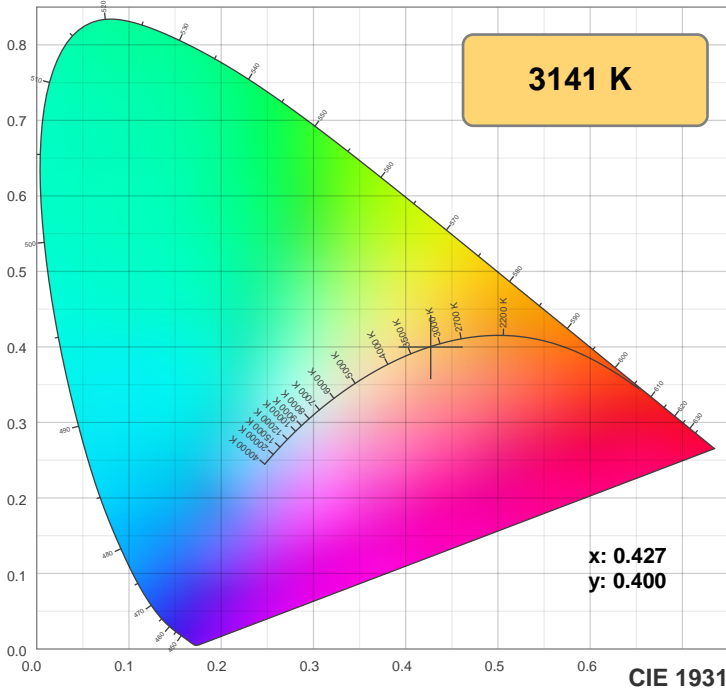
CIE 1931
x: 0.427
y: 0.400

Spectra

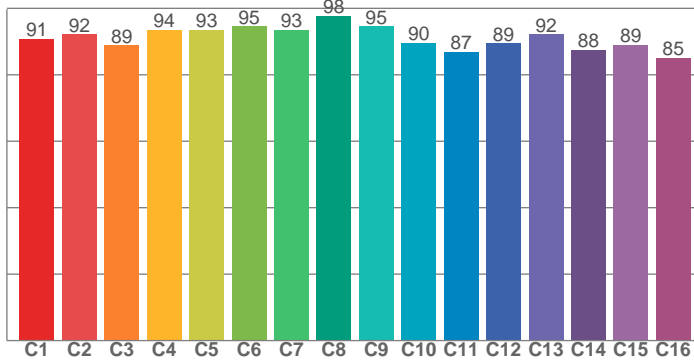


Power

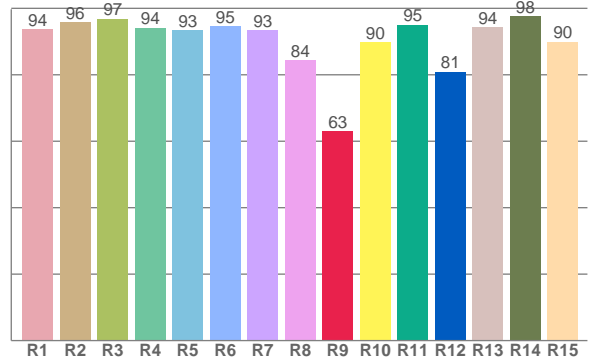




TM30: 91.2



CRI: 93.3 (R1-R8)



CRI R values, only R1-R8 are used to calculate final CRI value

R1	R2	R3	R4	R5	R6	R7	R8	R9	R10	R11	R12	R13	R14	R15
93.7	95.9	96.8	94.2	93.3	94.7	93.4	84.3	63.0	89.7	95.1	80.9	94.3	97.6	90.0

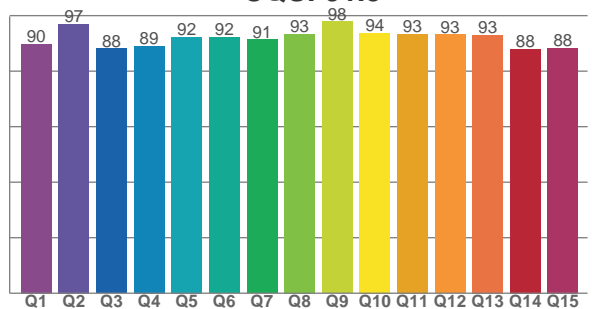
TM30 C values, 16 binned values out of total of 99 C values

C1	C2	C3	C4	C5	C6	C7	C8	C9	C10	C11	C12	C13	C14	C15	C16
90.9	92.2	88.8	93.5	93.4	94.6	93.5	97.7	94.6	89.6	86.9	89.4	92.1	87.5	88.9	85.1

CQS Q values

Q1	Q2	Q3	Q4	Q5	Q6	Q7	Q8	Q9	Q10	Q11	Q12	Q13	Q14	Q15
89.7	97.0	88.1	89.1	92.3	92.2	91.4	93.4	97.8	93.8	93.4	93.2	93.1	88.0	88.4

CQS: 91.5



Color parameters

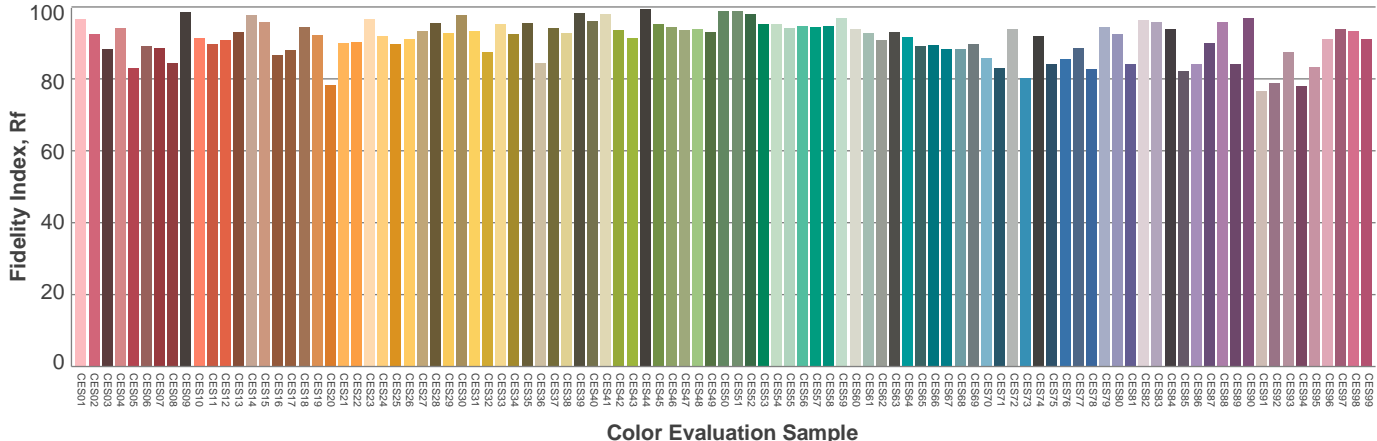
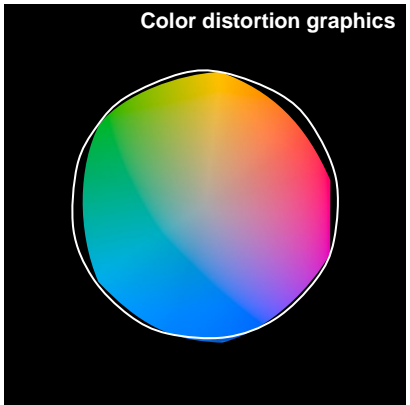
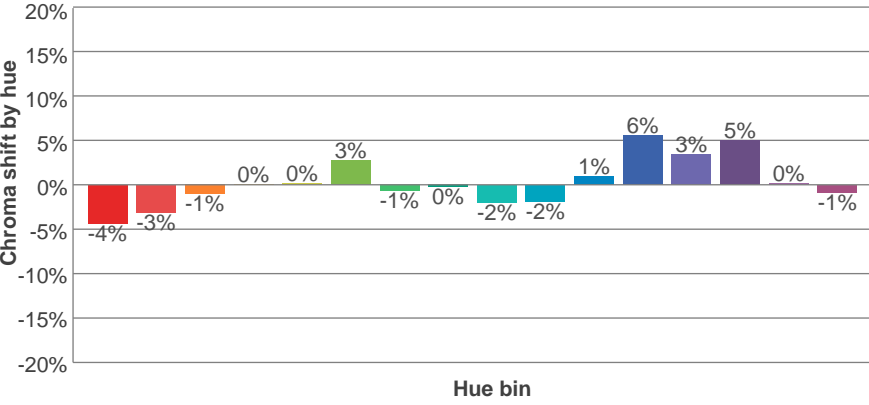
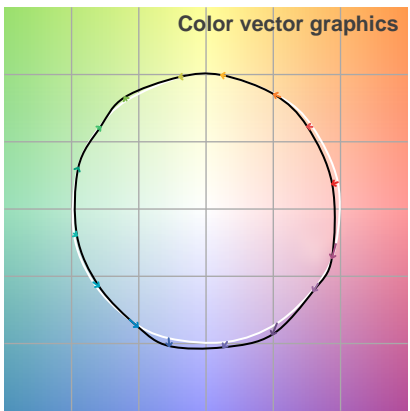
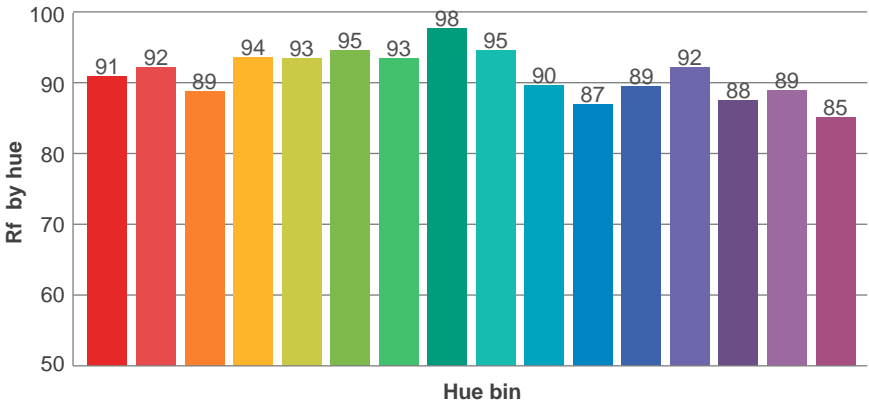
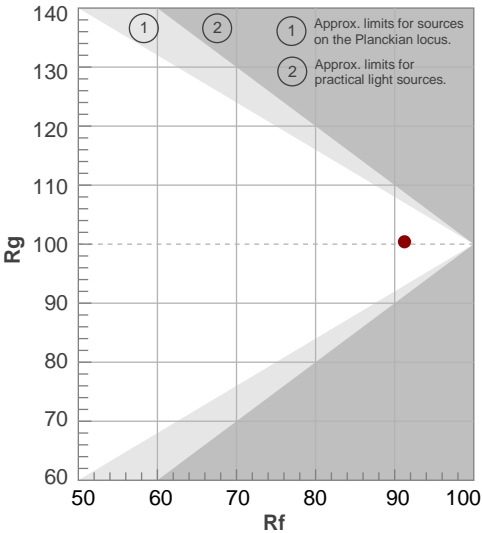
Color temperature	Color rendering index	Red component	Color fidelity	Color gamut	Color quality scale	Color coordinate cie 1931	Color coordinate cie 1931	Color coordinate	Color coordinate	Color diviation from black body
CCT	CRI	CRI R9	TM30 Rf	TM30 Rg	CQS	x	y	u	v	Δuv
3141 K	93.3	63.0	91.2	100.4	91.5	0.427	0.400	0.246	0.345	-0.0003

TM30 details

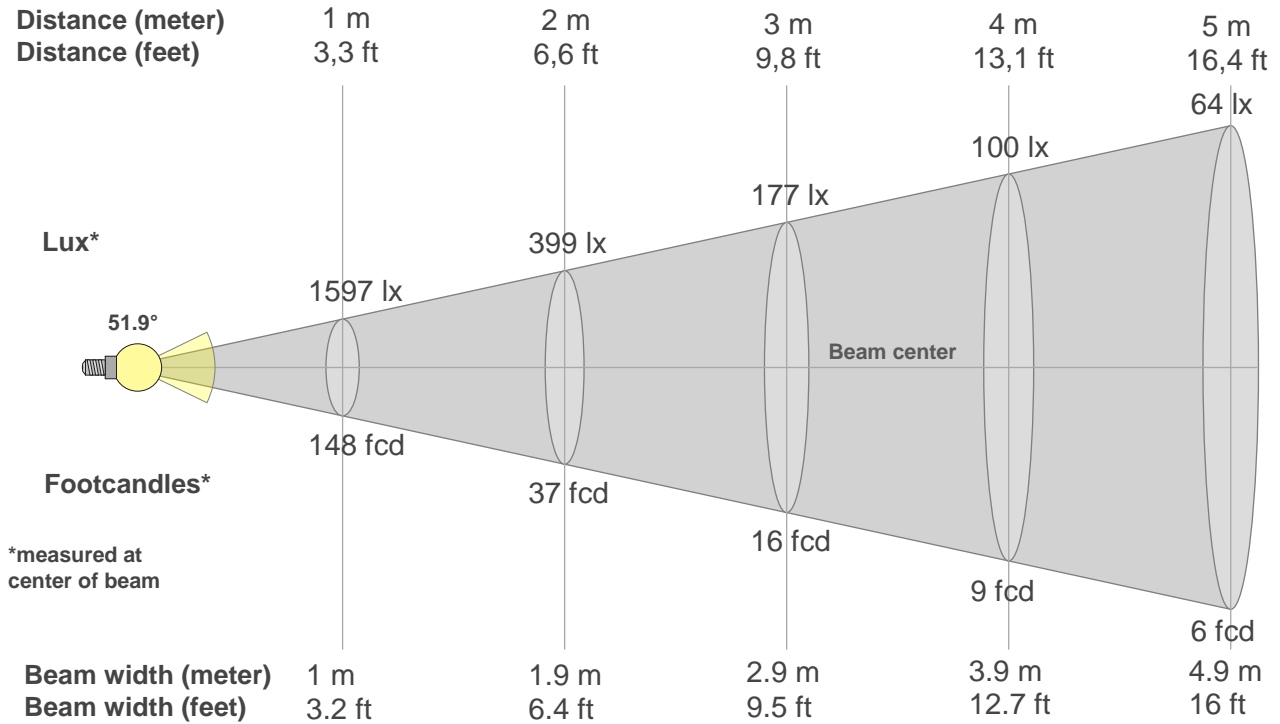
Rf 91.2
Fidelity index Rf

Rg 100.4
Gammut index Rg

Hue Bin	R _f	Graphic shifts (%)	
		Chroma	Hue
1	91	-4%	-1%
2	92	-3%	2%
3	89	-1%	5%
4	94	0%	3%
5	93	0%	2%
6	95	3%	0%
7	93	-1%	-2%
8	98	0%	-1%
9	95	-2%	2%
10	90	-2%	5%
11	87	1%	8%
12	89	6%	2%
13	92	3%	-3%
14	88	5%	-7%
15	89	0%	-6%
16	85	-1%	-11%



Beam details



Beam intensities from 1-20m

1m	2m	3m	4m	5m	6m	7m	8m	9m	10m	11m	12m	13m	14m	15m	16m	17m	18m	19m	20m
3.3ft	6.6ft	9.8ft	13.1ft	16.4ft	19.7ft	23ft	26.2ft	29.5ft	32.8ft	36.1ft	39.4ft	42.7ft	45.9ft	49.2ft	52.5ft	55.8ft	59.1ft	62.3ft	65.6ft
1597lx	399lx	177lx	100lx	64lx	44lx	33lx	25lx	20lx	16lx	13lx	11lx	9lx	8lx	7lx	6lx	6lx	5lx	4lx	4lx
148.3fcd	37.1fcd	16.5fcd	9.3fcd	5.9fcd	4.1fcd	3fcd	2.3fcd	1.8fcd	1.5fcd	1.2fcd	1fcd	0.9fcd	0.8fcd	0.7fcd	0.6fcd	0.5fcd	0.5fcd	0.4fcd	0.4fcd

Intensities in 0° c-plane

0°	2°	4°	6°	8°	10°	12°	14°	16°	18°	20°	22°	24°	26°	28°	30°	32°	34°	36°	38°
1597	1598	1588	1571	1548	1518	1486	1442	1381	1292	1187	1092	968	793	596	415	297	223	167	119
100%	100%	99%	98%	97%	95%	93%	90%	86%	81%	74%	68%	61%	50%	37%	26%	19%	14%	10%	7%

Intensities in 90° c-plane

0°	2°	4°	6°	8°	10°	12°	14°	16°	18°	20°	22°	24°	26°	28°	30°	32°	34°	36°	38°
1597	1591	1584	1567	1548	1522	1488	1445	1386	1297	1186	1088	967	792	602	421	295	216	163	114
100%	100%	99%	98%	97%	95%	93%	91%	87%	81%	74%	68%	61%	50%	38%	26%	18%	14%	10%	7%

Intensities in 180° c-plane

0°	2°	4°	6°	8°	10°	12°	14°	16°	18°	20°	22°	24°	26°	28°	30°	32°	34°	36°	38°
1597	1595	1587	1569	1548	1519	1485	1441	1380	1287	1184	1087	969	793	599	408	281	196	143	102
100%	100%	99%	98%	97%	95%	93%	90%	86%	81%	74%	68%	61%	50%	38%	26%	18%	12%	9%	6%

Intensities in 270° c-plane

0°	2°	4°	6°	8°	10°	12°	14°	16°	18°	20°	22°	24°	26°	28°	30°	32°	34°	36°	38°
1597	1593	1584	1565	1545	1522	1484	1441	1381	1295	1186	1086	962	792	588	408	285	200	149	103
100%	100%	99%	98%	97%	95%	93%	90%	87%	81%	74%	68%	60%	50%	37%	26%	18%	13%	9%	6%

Beam angle 50%	Field angle 10%	Cutoff angle 2,5%	Intensity ratio in 120° cone	Intensity ratio in 90° cone
51.9°	71.7°	87.5°	99.6%	98.3%

THIS PAGE INTENTIONALLY LEFT BLANK